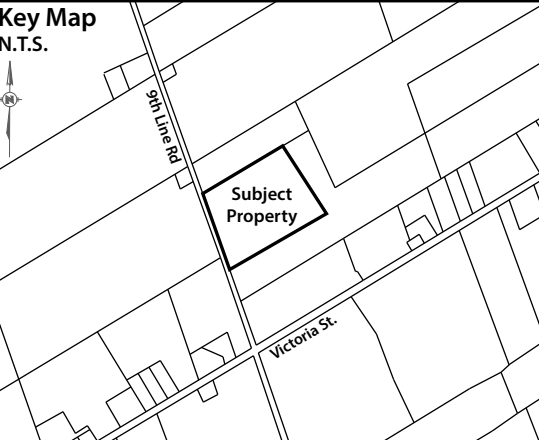


ASB Greenworld Site and Landscape Plan - Additional Information Sheet

2545 9th Line Road  
Part Lots 19 and 20, Concession 9  
Geographic Township of Osgoode  
CITY OF OTTAWA



| REV# | Revision   | By        | Date (YY/MM/DD) |
|------|--|-----------|-----------------|
| 1    | Site & Landscape Plan Additional Info Sheet for Review | C. Clarke | 24/07/19        |
| 2    | Site & Landscape Plan Additional Info Sheet for Review | C. Clarke | 24/10/19        |
| 3    | Site & Landscape Plan Additional Info - Fence Details  | C. Clarke | 24/11/02        |

Owner: ASB Greenworld Ltd.  
332911 Plank Line Rd  
Mount Elgin, ON N0J1N0  
Engineer: GHD Limited  
179 Colonnade Road South  
Suite 400  
Ottawa, Ontario K2E 7J4  
Surveyor: Callon Dietz Inc.  
19 Roe Street  
Carleton Place, ON K7C 0N3

APPROVED  
By Adam Brown at 2:50 pm, Jul 25, 2025

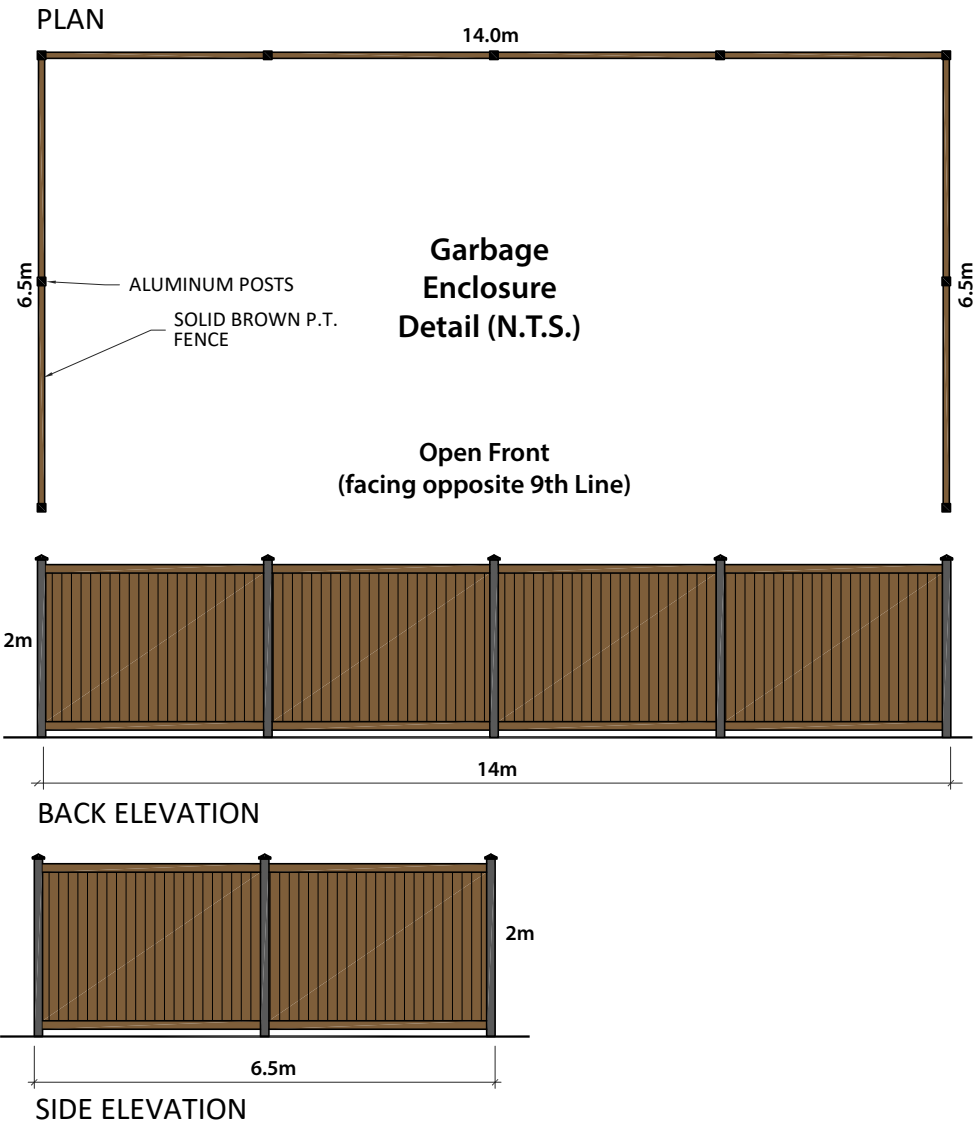
Signature of Adam Brown

ADAM BROWN  
MANAGER, DEVELOPMENT REVIEW - RURAL  
PLANNING, REAL ESTATE & ECONOMIC DEVELOPMENT  
DEPARTMENT, CITY OF OTTAWA

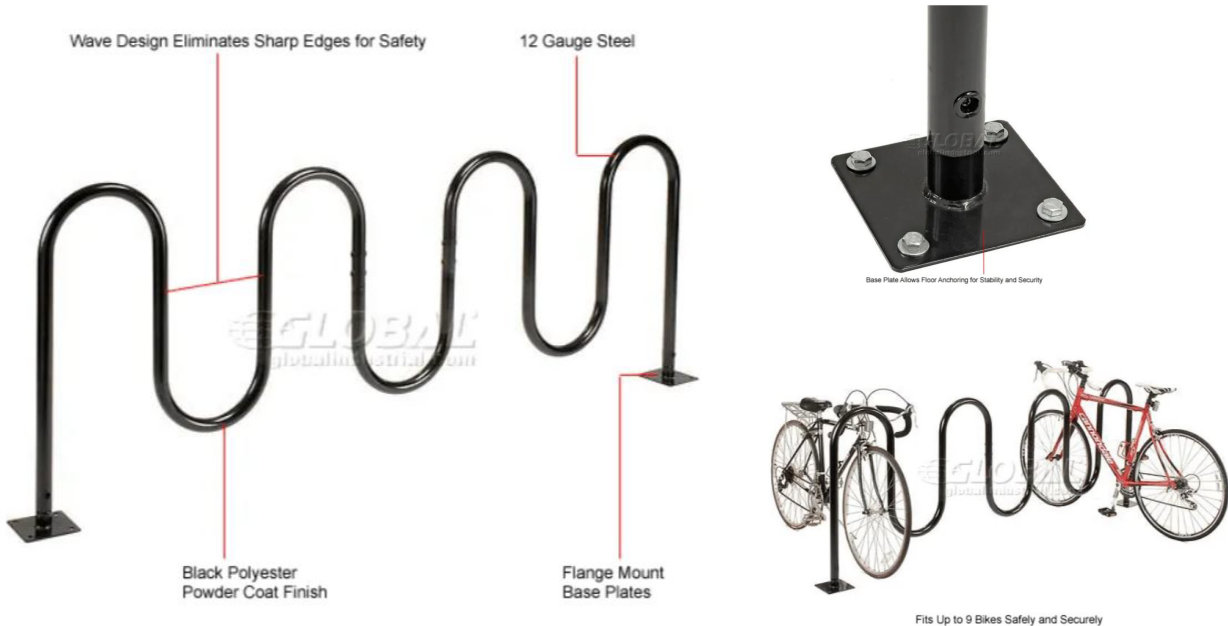
Notes:  
1. This additional information sheet has been provided in support of the Site and Landscape Plan to provide details for various site features like garbage, bicycle parking, fencing design, and proposed vegetation for the site.

|                                |              |
|--------------------------------|--------------|
| Version Date: November 2, 2024 |              |
| File No. 22-130                | Drawn By: CC |

Garbage Enclosure Design Details



Bike Rack Design Details



Planting List Table and Details

| Planting Lit Table for 2545 9 <sup>th</sup> Line Road |                    |                               |                     |  |
|---|--------------------|-------------------------------|---------------------|--|
| Common Name   | Botanical Name     | Size                          | Letter on Site Plan | Special Requirements   |
| Eastern White Cedar                                   | Thuja occidentalis | Up to 15m at Full Maturity    | A                   | - Remove tree from container at planting and dig hole twice the width of the root bulb<br>- Proposed locations will provide for at least 6 hours of sunlight                 |
| White Spruce  | Picea glauca       | Up to 30m at Full Maturity    | B                   | - Remove tree from container at planting and dig hole twice the width of the root bulb<br>- Proposed locations will provide for at least 6 hours of sunlight                 |
| Bur Oak   | Quercus macrocarpa | Up to 30m at Full Maturity    | C                   | - Remove tree from container at planting and dig hole twice the width of the root bulb<br>- For burlapped trees, place the root ball in the hole and gently cut away burlap. |
| Freeman Maple   | Acer freemanii     | Up to 15-20m at Full Maturity | D                   | - Remove tree from container at planting and dig hole twice the width of the root bulb<br>- For burlapped trees, place the root ball in the hole and gently cut away burlap. |

Existing Security Fence



Fence Details:  
1. Height of the fence including the three rows of barbed wire is 6 feet.  
2. Fence extends across the entire lot frontage measuring approximately 337 metres.