

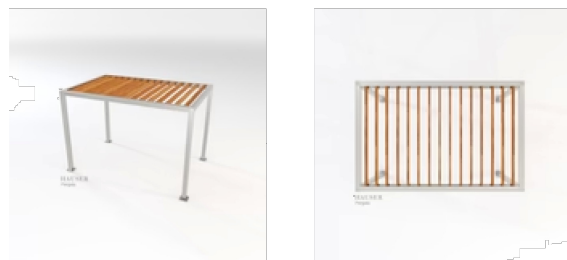
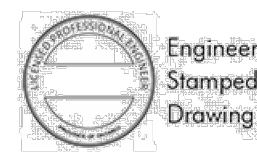
CUSTOM SIZE (5M X 5M)

Pergola, 6.5' X 10.5' X 8' H
ST10-C14V-6.5x10.5-8 - Pergola

Our 'Pergola' is the ideal solution for any shade requirement. Flexible and versatile, the all-aluminum 4" x 4" post and cross beam construction has been professionally engineered to allow for an infinite number of configurations. Create smaller shade zones with this 8' x 8' pergola or scale it up to cover a more substantial footprint. Shown here with 1.5" x 4" vertically oriented cedar purlins; a variety of inset roof slat sizes and materials are available to choose from. The Pergola incorporates our proprietary Konnectr System to ensure that each design is as fluid as possible, while still meeting the requisite load and wind analysis. The Hauser Konnectr System, consisting of custom engineered Konnectr Blocks and stainless steel countersunk hardware, ensures that each beam and column connection is seamless, strong and virtually undetectable. Built-in surface mount plates with concealed covers provide the finishing element to secure the connection. The core frame has been designed to accept a variety of lighting, charging and heat options. Create your own custom size and shape.

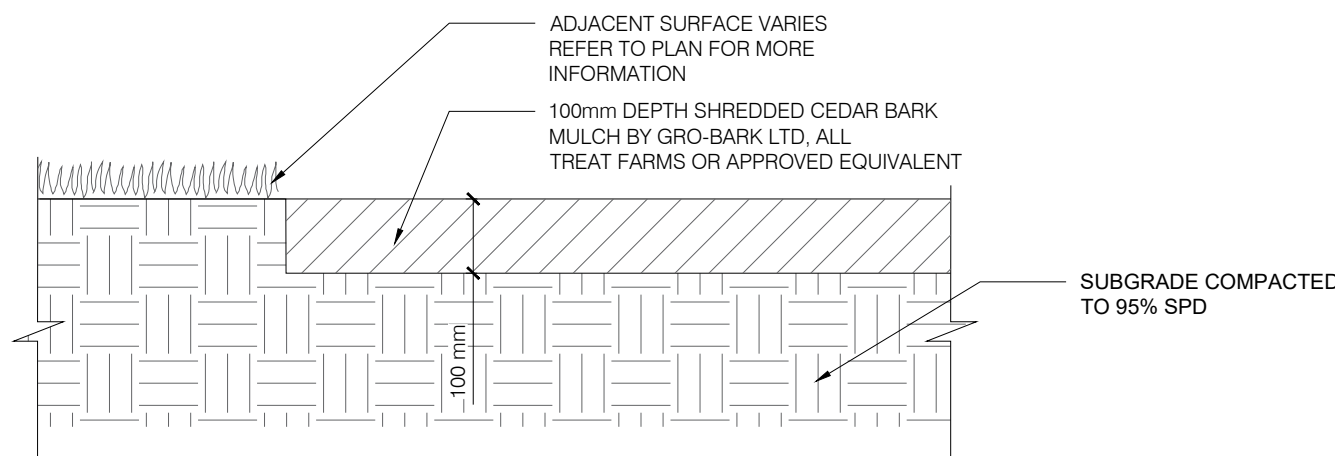


Width: 126" (320.0 cm)
Depth: 78" (198.1 cm)
Height: 96" (243.8 cm)
Weight: 278.0 lb (126.2 kg)

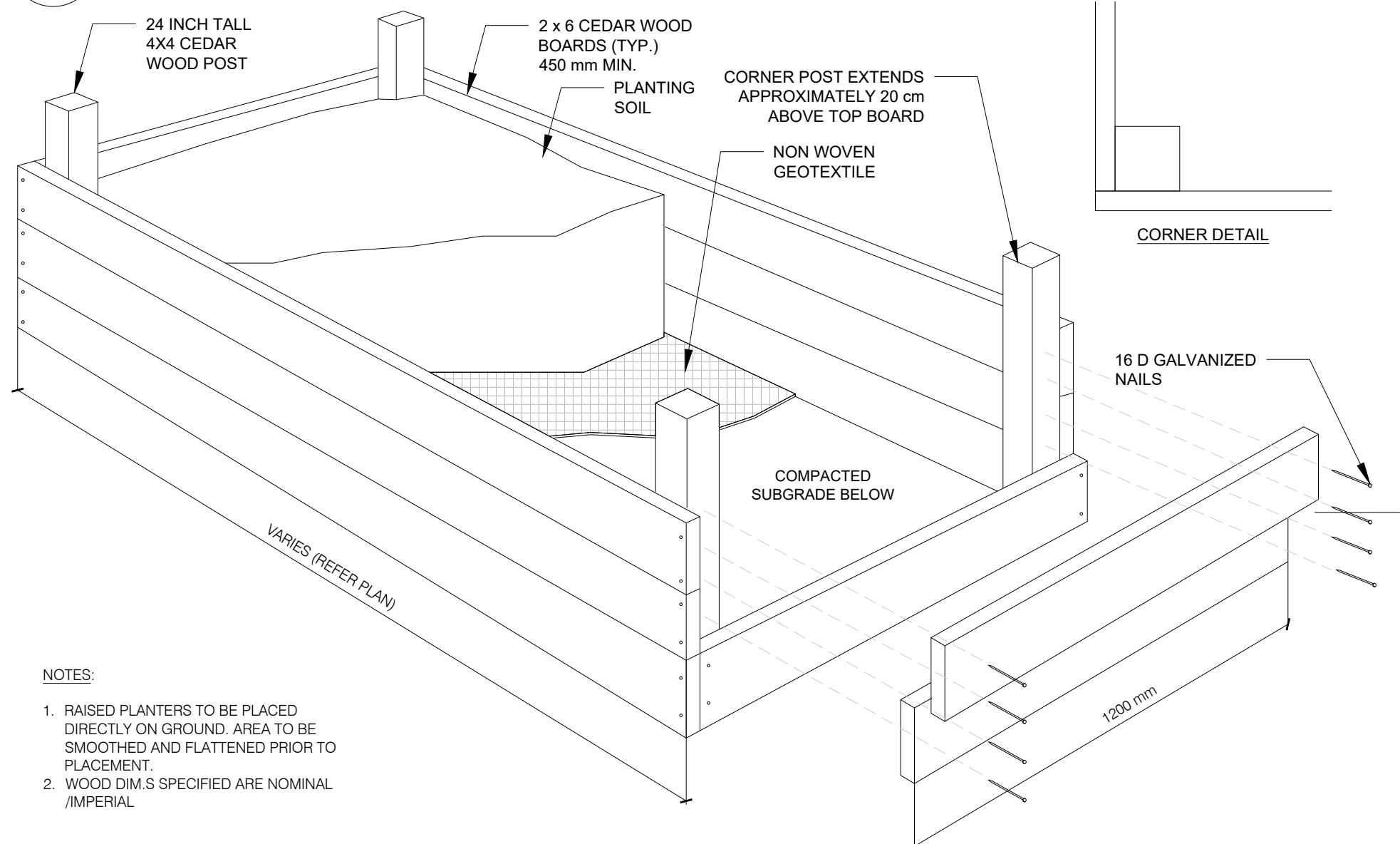


sales@hausersite.com | 1-800-268-7328 | hausersite.com

1 HAUSER - PERGOLA
LD2 N.T.S.

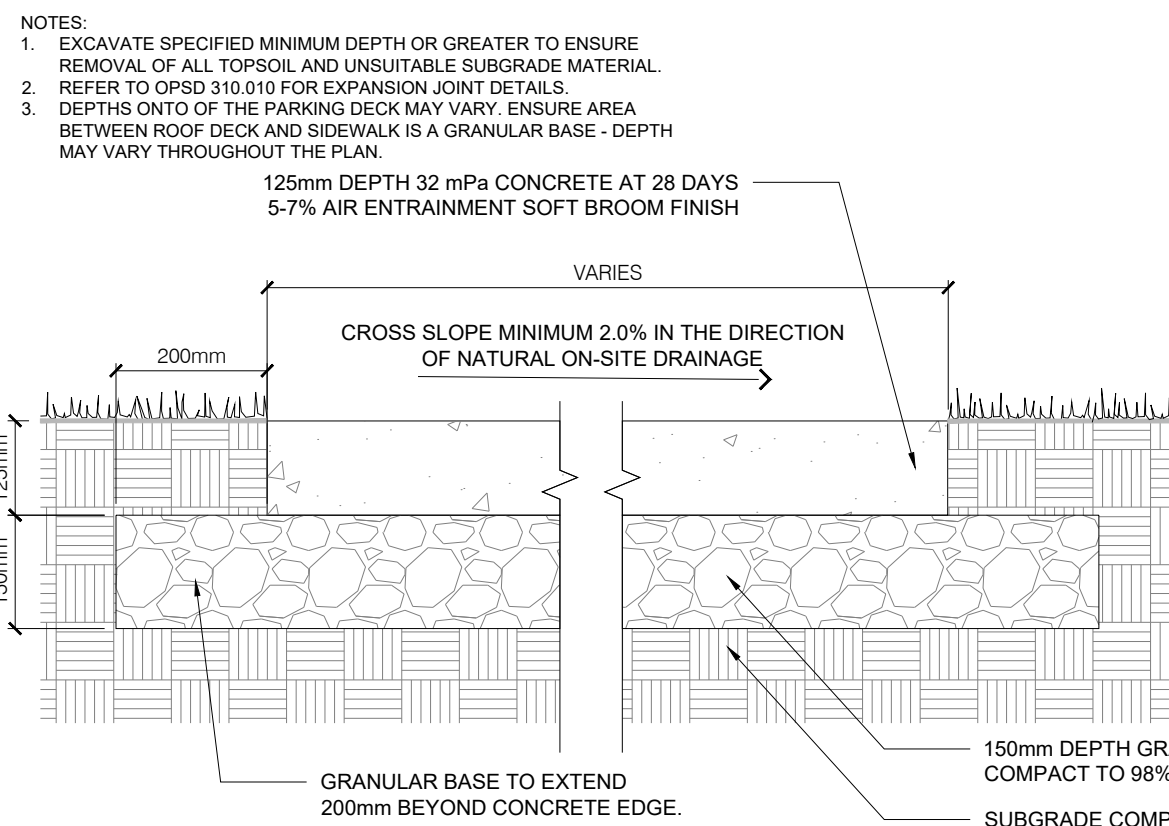


7 WOOD CHIP MULCH
LD2 N.T.S.



- NOTES:
1. RAISED PLANTERS TO BE PLACED DIRECTLY ON GROUND. AREA TO BE SMOOTHED AND FLATTENED PRIOR TO PLACEMENT.
 2. WOOD DIM S SPECIFIED ARE NOMINAL /IMPERIAL

8 RAISED PLANTING BED
LD2 N.T.S.



2 CONCRETE PAVING - PEDESTRIAN
LD2 N.T.S.

Skyline Bike Rack With Tropical Wood Accent
PS-78-102-21-AW Skyline Bike Rack

Our Skyline Bike Rack features an all-welded, powdercoated aluminum construction. Shown here with our 'Pewter' powdercoat finish, and an Ipe tropical wood accent. Custom sizes available upon request.

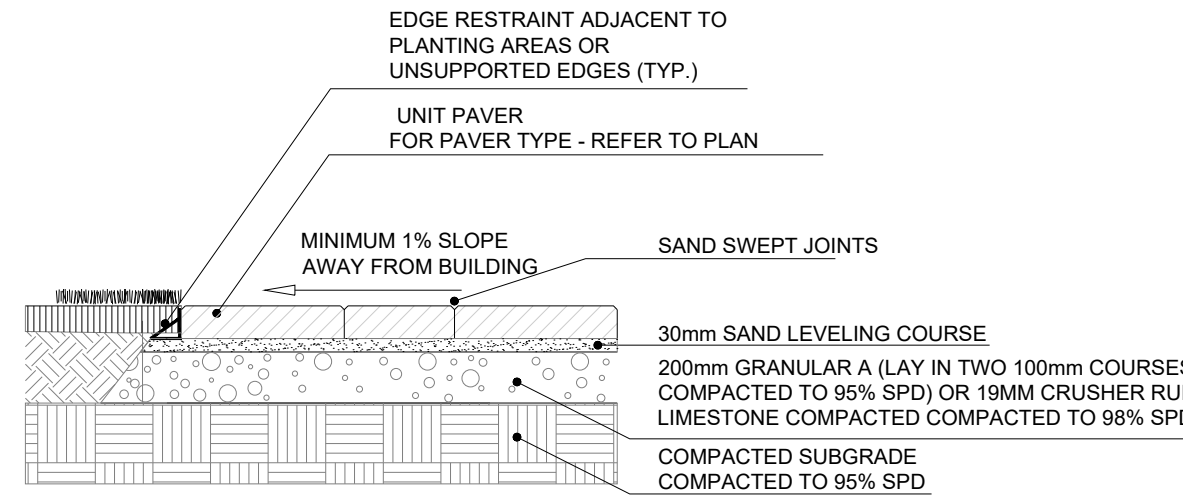


Width: 30" (76.2 cm)
Depth: 2" (5.1 cm)
Height: 32" (81.3 cm)



SUPPLIER: HAUSER
TELEPHONE: (800)-268-7328
WEBSITE: https://hausersite.com/
EMAIL: sales@hausersite.com

5 HAUSER - BIKE RACK
LD2 N.T.S.



3 UNIT PAVING
LD2 N.T.S.

Ridgewood Bench With Arms
PS-692-22-AL-72-WD3-WD3-A-BD

Our 'Ridgewood' bench with Armrests features an all-welded aluminum, powdercoated frame with 'Ipe' tropical wood, envirowood, or aluminum slats. Available in a variety of sizes and finishes.

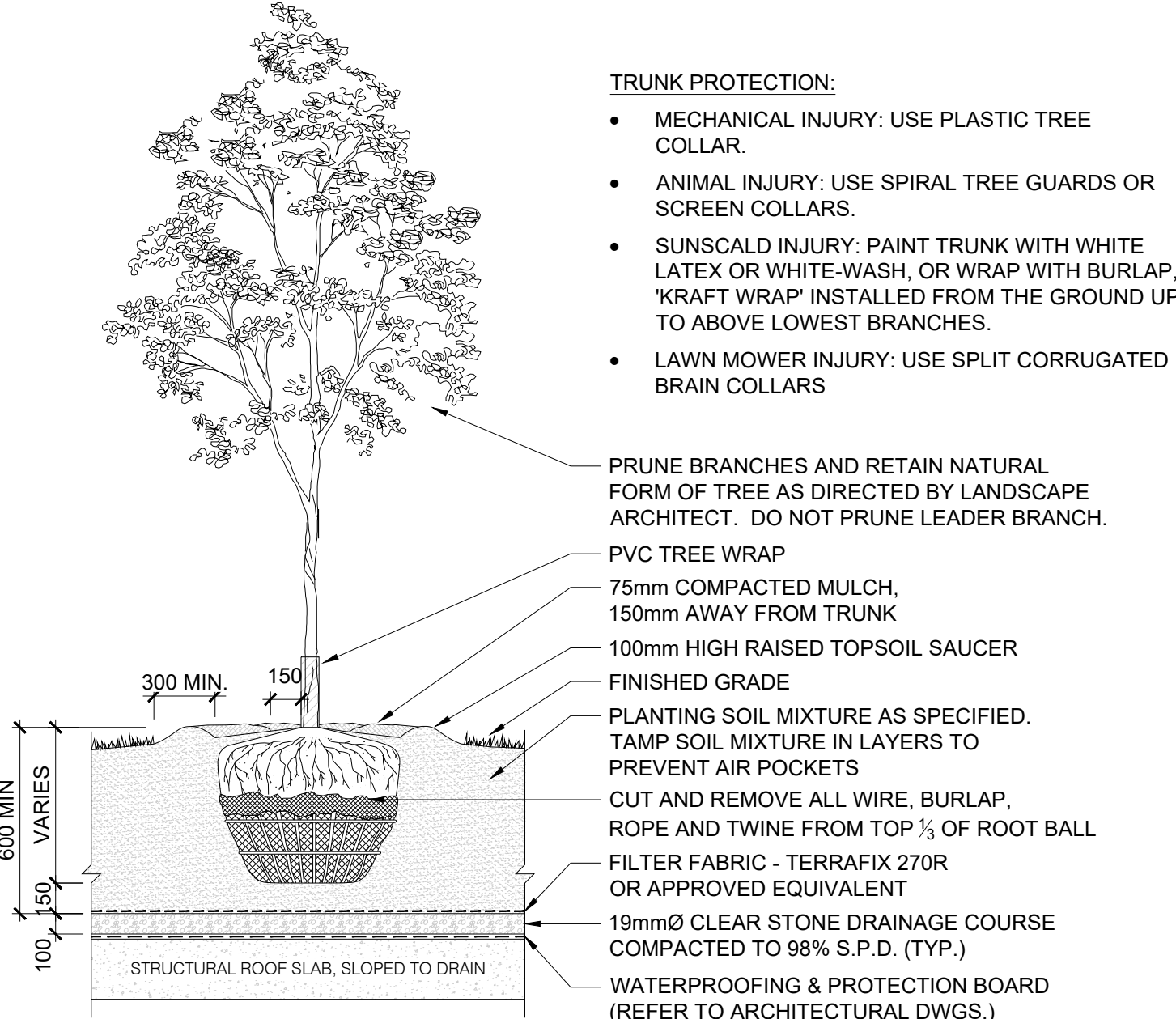


Width: 72" (182.9 cm)
Depth: 24.43" (62.1 cm)
Height: 30.16" (76.6 cm)
Weight: 120.0 lb (54.5 kg)



SUPPLIER: HAUSER
TELEPHONE: (800)-268-7328
WEBSITE: https://hausersite.com/
EMAIL: sales@hausersite.com

6 HAUSER - BENCH
LD2 N.T.S.



- TRUNK PROTECTION:
- MECHANICAL INJURY: USE PLASTIC TREE COLLAR.
 - ANIMAL INJURY: USE SPIRAL TREE GUARDS OR SCREEN COLLARS.
 - SUNSCALD INJURY: PAINT TRUNK WITH WHITE LATEX OR WHITE-WASH, OR WRAP WITH BURLAP, 'KRAFT WRAP' INSTALLED FROM THE GROUND UP TO ABOVE LOWEST BRANCHES.
 - LAWN MOWER INJURY: USE SPLIT CORRUGATED BRAIN COLLARS

- NOTES:
- DIG ALL HOLES BY HAND WHEN CLOSER THAN 1000mm TO UNDERGROUND POWER, TELEPHONE AND GAS ALIGNMENTS.
 - USE ROOT DEFLECTOR ON THE UTILITY SIDE OF REQUIRED.
 - ENSURE BASE OF TREE PIT IS STABLE IN ORDER TO MAINTAIN THE DESIRED TREE LEVEL AND GRADE
 - TREES TO BE SPRAYED WITH APPROVED ANTI-DESSICANT PRIOR TO TRANSPLANTING UNLESS PLANTED WITHIN 48 HOURS OF DIGGING (IF PLANTED IN FULL LEAF).
 - SET TREE 50mm HIGHER THAN SURROUNDING GRADE TO ALLOW FOR SETTLEMENT.
 - SCARIFY COMPACTED SUB-GRADE TO 500mm DEEP IN AREA 5 X ROOTBALL DIAMETER.
 - DIG PIT 300mm WIDER THAN ROOTBALL PERIMETER
 - MULCH WITH SHREDDED BARK OR COMPOSTED HARDWOOD CHIPS.
 - REMOVE TREE STAKES AND TREE WRAP AFTER ONE SEASON.

9 LUMENS - LIGHT BOLLARDS
LD2 N.T.S.



SPECIFICATIONS:
SUPPLIER: LUMENS
ITEM#: BEG481542
MFR ID: 77265-BLK
PANEL HEIGHT: 914mm (3)
SIZE: 3.9X 27.5
COLOUR: GRAPHITE
INSTALLATION TYPE: IN GROUND
WEBSITE: https://www.lumens.com/
PHONE: (877) 445-4466

10 TREE PLANTING ON CONCRETE BASEMENT SLAB
LD2 N.T.S.

CLIENT
ROHIT COMMUNITIES

550 91 STREET SW #101, EDMONTON, AB
T6X0V1

COPYRIGHT
This drawing has been prepared solely for the intended use, thus any reproduction or distribution for any purpose other than authorized by Arcadis is forbidden. Written dimensions shall have precedence over scaled dimensions. Contractors shall verify and be responsible for all dimensions and conditions on the job, and Arcadis shall be informed of any variations from the dimensions and conditions shown on the drawing. Shop drawings shall be submitted to Arcadis for general conformance before proceeding with fabrication.

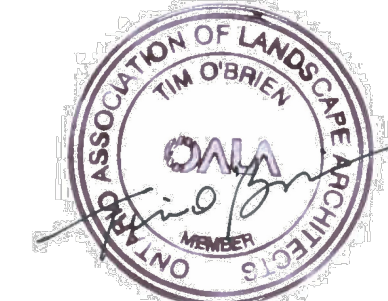
Arcadis Professional Services (Canada) Inc.
is a part of Arcadis

ISSUES		
No.	DESCRIPTION	DATE
1	ISSUED FOR SPA SUBMISSION	2024-03-15
2	ISSUED FOR SPA SUBMISSION	2024-04-24
3	ISSUED FOR SPA SUBMISSION	2024-05-08
4	ISSUED FOR SPA SUBMISSION	2024-05-31
5	ISSUED FOR SPA SUBMISSION	2025-02-11
6	ISSUED FOR SPA SUBMISSION	2025-03-26

CONSULTANTS
CIVIL: ARCADIS PROFESSIONAL SERVICES (CANADA) INC.
LANDSCAPE: ARCADIS PROFESSIONAL SERVICES (CANADA)
SURVEY: ANNIS, O SULLIVAN, VOLLEBERG LTD
ARCHITECTURE: NORR ARCHITECTS & ENGINEERING LTD.
STRUCTURAL: CUNLIFFE & ASSOCIATES
MECHANICAL: GOODKEY, WEEDMARK & ASSOCIATES LTD.
ELECTRICAL: GOODKEY, WEEDMARK & ASSOCIATES LTD.
OWNER: ROHIT AT WATERIDGE 5 LTD.

04272- 1232 BLOCK 6, PLAN 4M1718

SEAL



410 Albert Street - Suite 101
Waterloo ON N2L 3V3 Canada
tel 519 585 2255
www.arcadis.com

PROJECT
ROHIT WATERIDGE VILLAGE
BLOCK 6

OTTAWA, ON

PROJECT NO:
144148

DRAWN BY:
R.S

CHECKED BY:
M.P.

PROJECT MGR:
M.P.

APPROVED BY:
T.O.

SHEET TITLE
LANDSCAPE DETAILS

SHEET NUMBER

LD2

ISSUE

6