

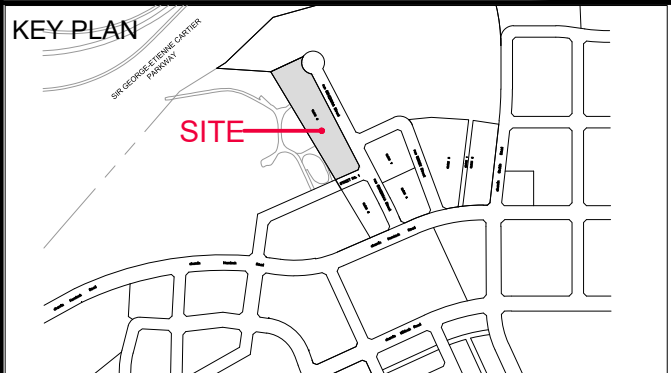
CLIENT
ROHIT GROUP

15 FITZGERALD ROAD, NEPEAN, ON

COPYRIGHT
This drawing has been prepared solely for the intended use, thus any reproduction or distribution for any purpose other than authorized by Arcadis is forbidden. Written dimensions shall have precedence over scaled dimensions. Contractors shall verify and be responsible for all dimensions and conditions on the job, and Arcadis shall be informed of any variations from the dimensions and conditions shown on the drawing. Shop drawings shall be submitted to Arcadis for general conformance before proceeding with fabrication.

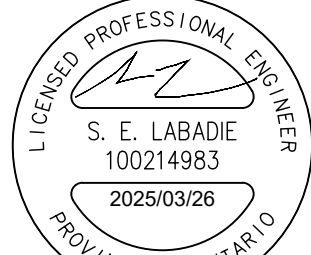
Arcadis Professional Services (Canada) Inc.
Formerly (B) Group Professional Services (Canada) Inc.

ISSUES		
No.	DESCRIPTION	DATE
1	ISSUED FOR COORDINATION	2024-03-22
2	SUBMISSION NO. 1	2024-04-25
3	CITY SUBMISSION NO. 1	2024-09-25
4	REVISED PER NEW SITE PLAN	2024-10-04
5	CITY SUBMISSION NO. 2	2025-02-11
6	REVISED PER NEW SITE PLAN	2025-03-26
7		
8		



CONSULTANTS

SEAL



PRIME CONSULTANT
ARCADIS

333 Preston Street - Suite 500
Ottawa ON K1S 5N4 Canada
tel 613 225 1311
www.arcadis.com

PROJECT
**WATERIDGE VILLAGE
AT ROCKCLIFFE**

PHASE 4 BLOCK 6

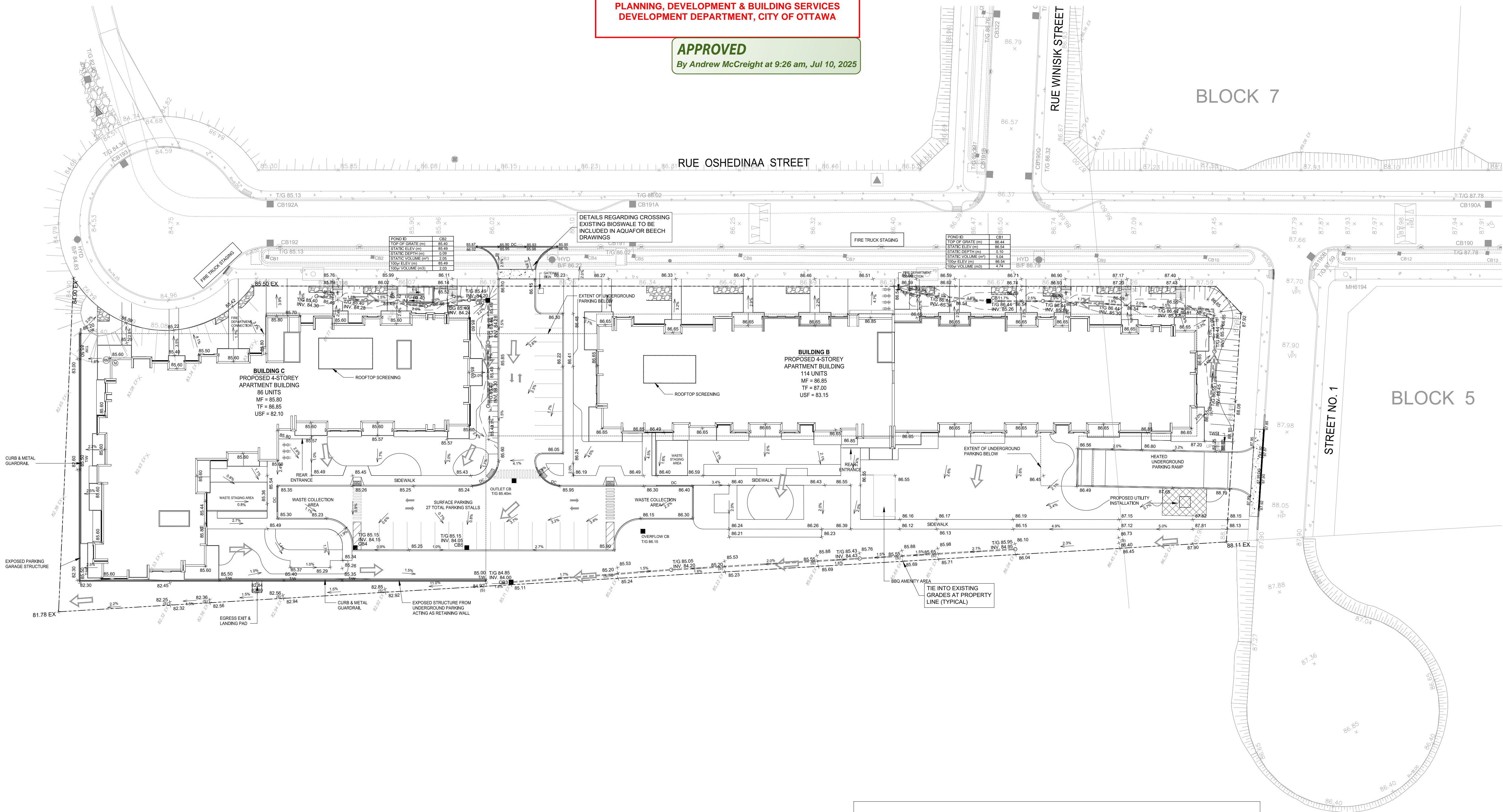
PROJECT NO:
144148
DRAWN BY:
M.M.
CHECKED BY:
D.C.
PROJECT MGR:
D.C.
APPROVED BY:
S.L.

SHEET TITLE
GRADING PLAN

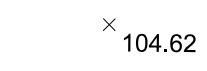
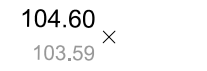
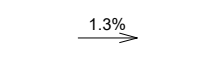


SHEET NUMBER
C-200
ISSUE
6


ANDREW MCCREIGHT
MANAGER, DEVELOPMENT REVIEW CENTRAL
PLANNING, DEVELOPMENT & BUILDING SERVICES
DEVELOPMENT DEPARTMENT, CITY OF OTTAWA

APPROVED
By Andrew McCreight at 9:26 am, Jul 10, 2025



GRADING LEGEND

	PROPOSED SPOT GRADE
	LOT CORNER GRADE C/W EXISTING GRADE
	SLOPE C/W FLOW DIRECTION
	MAJOR OVERLAND FLOW ROUTE
	TERRACING 3:1 MAXIMUM UNLESS NOTED OTHERWISE