

M:\2023\123062\CADD\Landscape\123062-L.dwg, L2 (Roof), May 26, 2025 - 1:29pm, lbarbale

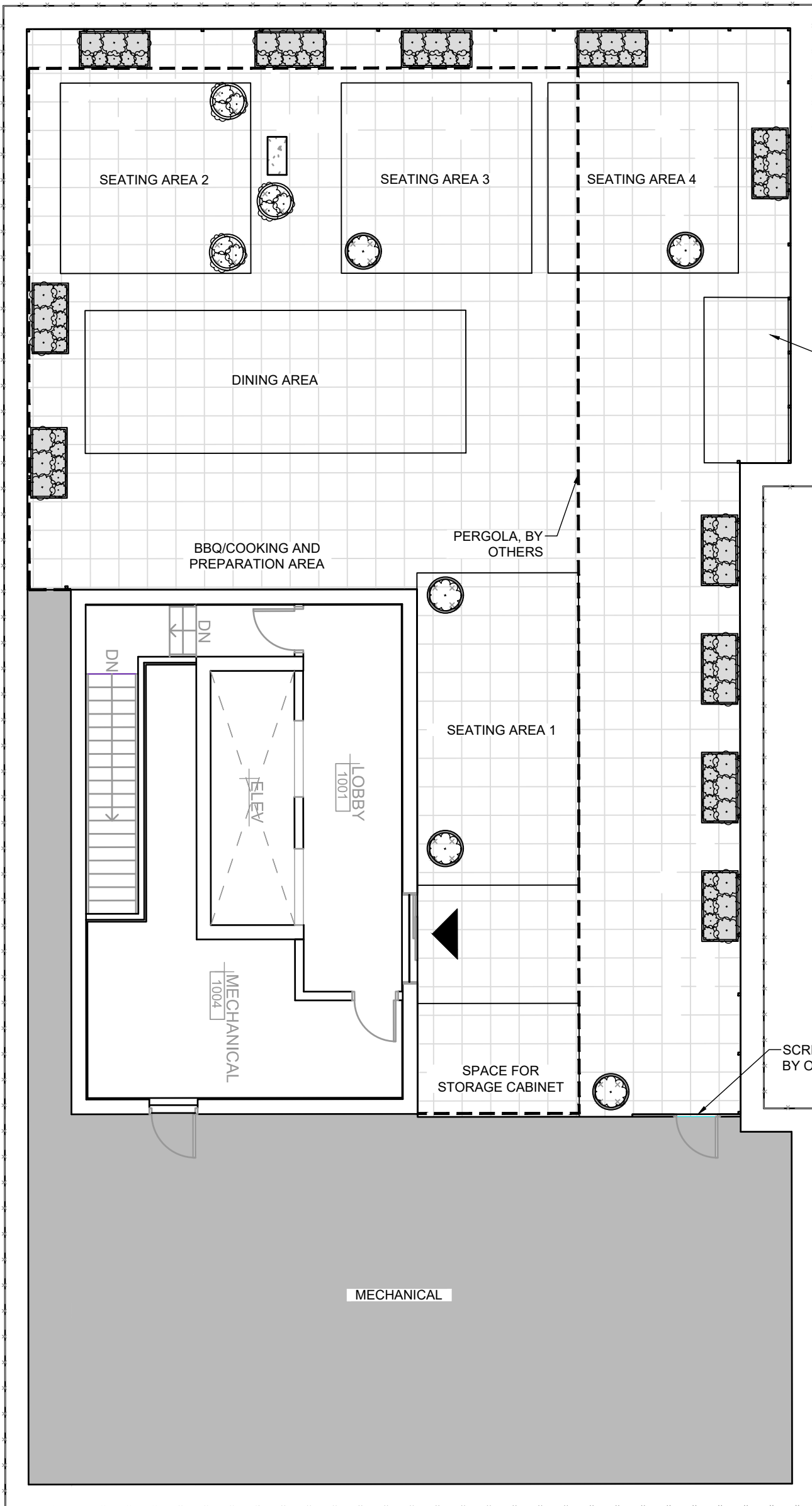
NOTE:  
THE POSITION OF ALL POLE LINES, CONDUITS,  
WATERMAINS, SEWERS AND OTHER  
UNDERGROUND AND OVERGROUND UTILITIES AND  
STRUCTURES IS NOT NECESSARILY SHOWN ON  
THE CONTRACT DRAWINGS, AND WHERE SHOWN,  
THE ACCURACY OF THE POSITION OF SUCH  
UTILITIES AND STRUCTURES IS NOT GUARANTEED.  
BEFORE STARTING WORK, DETERMINE THE EXACT  
LOCATION OF ALL SUCH UTILITIES AND  
STRUCTURES AND ASSUME ALL LIABILITY FOR  
DAMAGE TO THEM.

Owner:  
Azure Inc.  
c/o Azure Urban Developments Inc.  
463 Golden Avenue  
Ottawa, ON K2A 2E4  
Phone: 613-234-4346

PERFORATED METAL SCREENS OR  
GLAZED FACADE AT ROOF TERRACE.  
SEE ARCHITECTURAL DETAILS

SPACE FOR  
BAR STOOLS  
AND COUNTER

SCREEN AND GATE,  
BY OTHERS

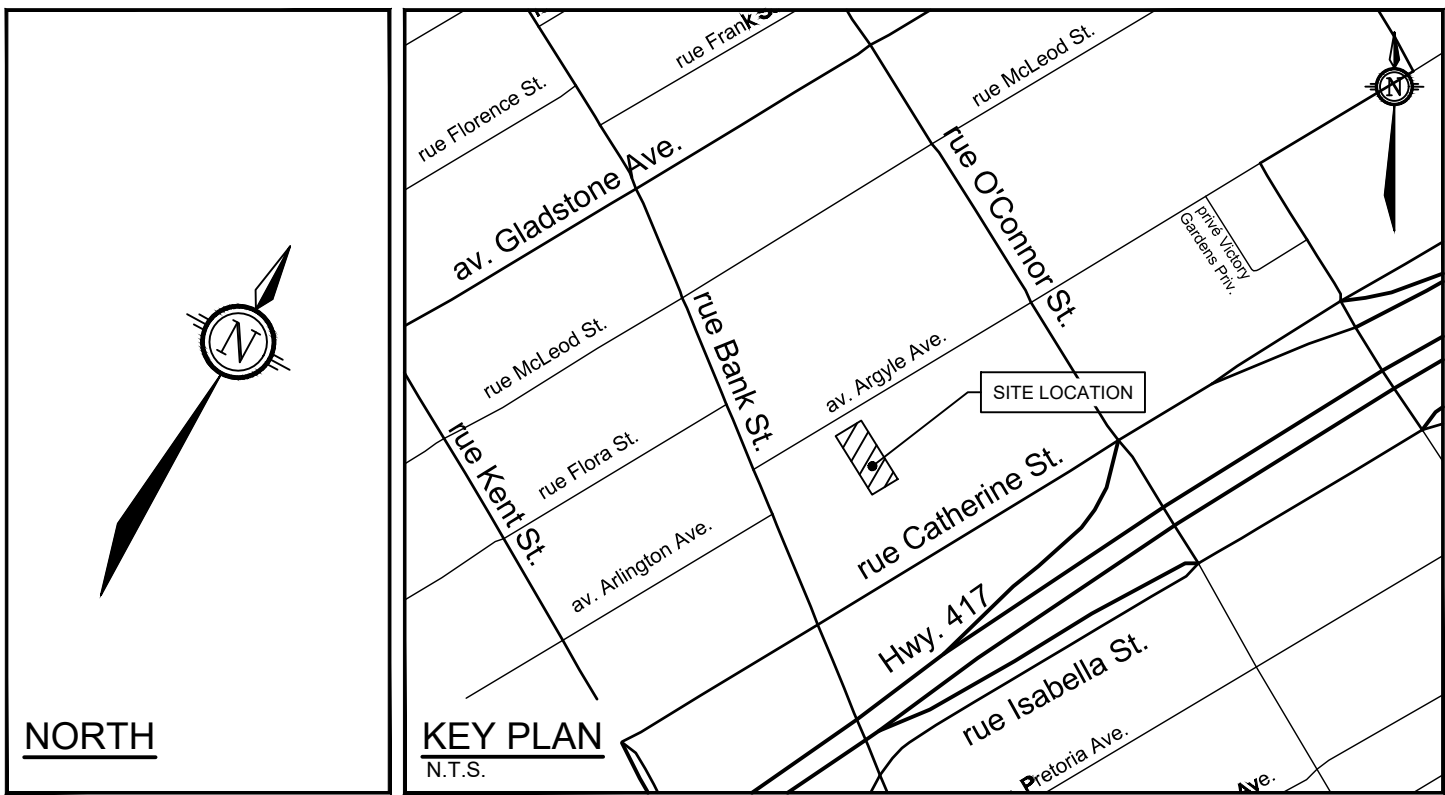


## PRODUCT INFORMATION

Install products as per manufacturer specifications. Shop drawings required.

### ROOF TOP

- Roof Top Planter Type 1  
Senora Round Plastic Planter TF4054 by Wasau Tile  
Fill box with growing medium designed for raised planters. Submit product notes for review and approval.  
Size: 30" Dia  
Height: 24"  
Weight: 30lbs  
Material: Plastic  
Color: 10 Charcoal
- Roof Top Planter Type 2  
Self watering rectangular planter by Urban Form  
Fill box with growing medium designed for raised planters. Submit product notes for review and approval.  
Size: 30" D X 58" L  
Height: 21"  
Weight: 245 lbs  
Material: Marine Grade Aluminium Frame, SS hardware, Recycled Plastic Slats  
Color: Powder Coat Frame - Black, Slats Grey



### LEGEND

- PROPERTY LIMIT
- PAVING BY OTHERS (SEE AR DETAILS)
- PROPOSED PLANTER 1
- PROPOSED PLANTER 2
- PERGOLA BY OTHERS
- SHRUBS, PERENNIALS / ORNAMENTAL GRASSES
- SPECIES (SEE PLANT LIST)
- QUANTITY
- SCREENS/FACADE PANELS AT ROOF TERRACE, BY OTHERS

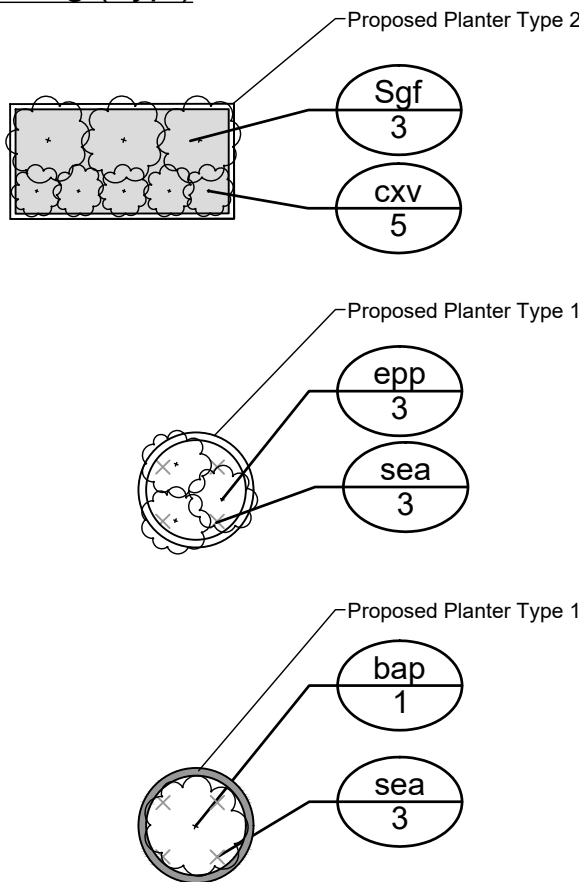
### GENERAL

1. Read and interpret this drawing/ drawing set in conjunction with all the contract details and specifications, including related civil, utility, structural, architectural, mechanical, electrical, environmental, geotechnical, and survey information.
2. The Contractor is to determine the exact location, size, material, and elevation of all existing utilities prior to commencing construction. Protect and assume responsibility for all existing utilities regardless of being shown on the drawings.
3. It is essential to use the plans and details in conjunction with the specifications and notes.
4. Do not scale drawings. Work to dimensions only.
5. Protect all existing and retained vegetation for the duration of construction according to the contract details and specifications.
6. Reinstate all areas and items damaged or disturbed, beyond the Limit of Work, because of construction activities, including but not limited to construction staging areas, haul roads, stockpile areas, etc. to the satisfaction of the Consultant. Unless otherwise noted, Contractor is to reinstate all areas to pre-construction condition or better to the satisfaction of the Contract Administrator.

### PLANTING

1. Plant material to be No. 1 Grade and is to comply with Canadian Standards for Nursery Stock (latest edition) published by the Canadian Nursery Landscape Association.
2. Use structurally sound plant material with strong fibrous root system free of disease, defects, and injuries. Use trees with straight trunks, well and characteristically branched for species. Obtain approval from consultant of plant material at source prior to digging. All trees and shrubs to be container grown, potted, W/B or B/B, as indicated on Plant List. Bare root plants are only acceptable for certain species and as approved by the Landscape Architect.
3. Plant material substitutions are not be permitted without the written approval from the Consultant, **with 48 hours notice**, prior to shipping plant material.
4. Plant locations are schematic / approximate only. **Contractor is to stake out locations on site for approval by the Landscape Architect prior to installation.**
5. The illustrated number of plants shown in the Planting Plan supersedes the estimated number in the Plant List. Contractor to report any discrepancies to the Landscape Architect prior to installation. Contractor will assume full responsibility if the Landscape Architect is not notified.
6. Ensure trees are thoroughly watered following planting. Monitor material and ensure adequate moisture until acceptance.
7. In heavy clay or poorly drained soils, set root ball with root collar 75-100mm higher than finished grade.
8. Approved topsoil depths are as follows:
  - a. Plant Beds - **450mm** continuous depth. Applies to shrubs, perennials, vines, and groundcovers.
  - b. Sod/ Seed Areas - **100mm** depth.
9. Sod to be No. 1 Kentucky Bluegrass Sod grown from minimum mixture of 3 Kentucky Bluegrass cultivars. Quality and source are to comply with Canadian Standards for Nursery Stock, Section 17, (latest edition) published by the Canadian Nursery Landscape Nursery Landscape Association.
10. Apply the following mineral fertilizer unless soil tests show other requirements:
  - a. Plant Beds - (8-32-16), i.e. 8% Nitrogen, 32% Phosphorus, 16% Potash per manufacturer specifications.
  - b. Sod Areas - (8-32-16), i.e. 8% Nitrogen, 32% Phosphorus, 16% Potash at a rate of 350kg/ha.
11. Where applicable, for any plant areas with a mix of species/ cultivars notes, Contractor is to cluster like plants in groups of 3-5 and evenly distribute these in the noted area.

### Planting (Typ.)



### PLANT LIST

KEY	QTY	BOTANICAL NAME	COMMON NAME	SIZE	COND	SPACING
<b>Deciduous Shrubs</b>						
sea	24	<i>Sedum floriferum</i> 'Weihenstephaner Gold'	Stonecrop	9cm	PT	As show n
Sgf	36	<i>Spiraea japonica</i> 'Goldflame'	Goldflame Spirea	50cm Ht	PT	As show n
<b>Perennials</b>						
bap	5	<i>Baptisia australis</i> 'Purple Smoke'	Purple Smoke False Indigo	1g	PT	As show n
epp	9	<i>Echinacea purpurea</i>	Purple Coneflow er	1g	PT	As show n
<b>Grasses</b>						
cxv	55	<i>Carex pensylvanica</i>	Pennsylvania Sedge	1g	PT	As show n

### FOR REVIEW ONLY



**NOVATECH**  
Engineers, Planners & Landscape Architects  
Suite 200, 240 Michael Cowpland Drive  
Ottawa, Ontario, Canada K2M 1P6  
Telephone (613) 254-9643  
Facsimile (613) 254-5867  
Website www.novatech-eng.com

LOCATION  
CITY OF OTTAWA  
254 ARGYLE AVENUE

DRAWING NAME  
ROOFTOP - LANDSCAPE PLAN

PROJECT No.  
123062

REV  
REV 2

DRAWING No.  
123062-L2