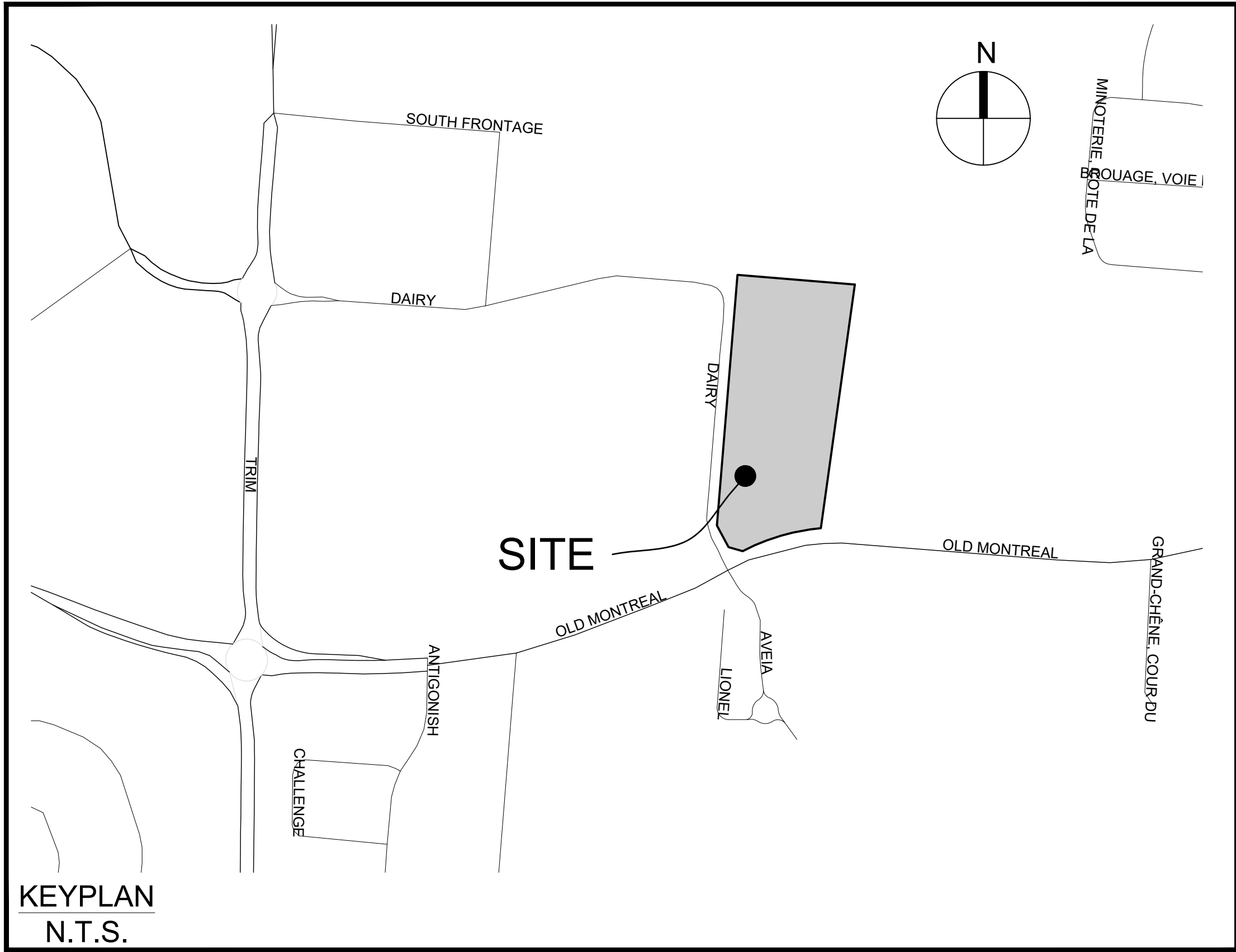


# 1015 DAIRY DRIVE

## TSL DAIRY INC.



333 Preston Street - Suite 500  
Ottawa ON K1S 5N4 Canada  
tel 613 225 1311  
[www.arcadis.com](http://www.arcadis.com)

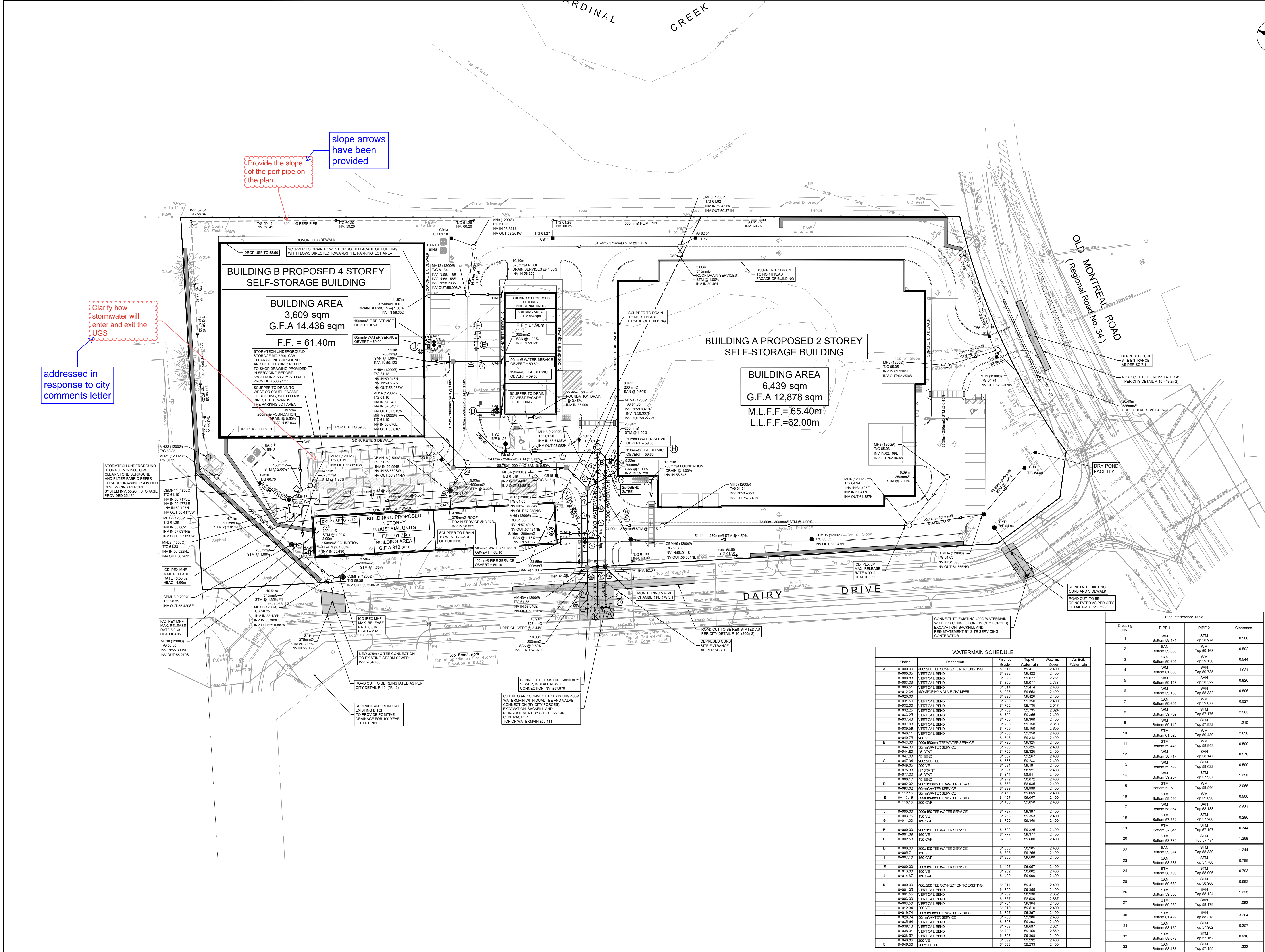


Sheet List Table	
Sheet Number	Sheet Title
C-000	COVER
C-001	GENERAL PLAN
C-010	NOTES DETAILS CB DATA
C-200	GRADING PLAN
C-400	SANITARY DRAINAGE AREA PLAN
C-500	STORM DRAINAGE AREA PLAN
C-600	PONDING PLAN
C-900	EROSION AND SEDIMENT CONTROL PLAN

CITY OF OTTAWA

CONTRACT NO. 142817





CLIENT

TSL DAIRY INC.

COPYRIGHT

This drawing has been prepared solely for the intended use, thus any reproduction or distribution for any purpose other than authorized by Arcadis is forbidden. Written dimensions shall have precedence over scaled dimensions. Contractors shall verify and be responsible for all dimensions and conditions on the job, and Arcadis shall be informed of any variations from the dimensions and conditions shown on the drawing. Shop drawings shall be submitted to Arcadis for general conformance before proceeding with fabrication.

Arcadis Professional Services (Canada) Inc.

Formerly B Group Professional Services (Canada) Inc.

ISSUES

No.	DESCRIPTION	DATE
1	SUBMISSION NO. 1 FOR CITY REVIEW	2024-02-14
2	SUBMISSION NO. 2 FOR CITY REVIEW	2024-06-27
3	SUBMISSION NO. 3 FOR CITY REVIEW	2024-10-04
4		
5		
6		

SEE 010, FOR NOTES, LEGEND, CB TABLE, STREET SECTIONS AND DETAILS

KEY PLAN

1:500

0 5 10 15 20 25m

SEAL

LICENCE PROFESSIONNEL NOTRE DAME

D. Yannakopoulos

2024/10/04

PROVINCE OF ONTARIO

PRIME CONSULTANT

ARCADIS

333 Preston Street - Suite 500  
Ottawa ON K1S 5N4 Canada  
tel 613 225 1311  
www.arcadis.com

PROJECT

1015 DAIRY DRIVE

PROJECT NO:

142817

DRAWN BY:

M.M./A.B.

CHECKED BY:

R.M./D.Y.

PROJECT MGR:

R.M.

APPROVED BY:

D.Y.

SHEET TITLE

GENERAL PLAN OF SERVICES

SHEET NUMBER

C-001

ISSUE

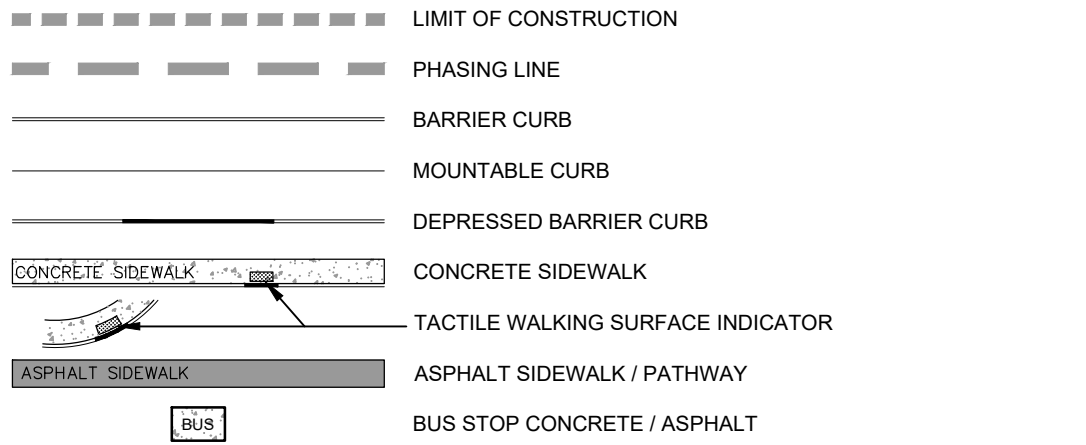
3

WATERMAN SCHEDULE					
Station	Description	Finished Grade	Top of Waterman Cover	Waterman	As Bldg Waterman
A	0+000.00 400x200 TEE CONNECTION TO EXISTING	61.811	59.411	2.400	
	0+000.35 VERTICAL BEND	61.822	59.422	2.400	
	0+000.83 VERTICAL BEND	61.828	59.427	2.751	
	0+000.93 VERTICAL BEND	61.800	59.077	2.713	
	0+003.51 VERTICAL BEND	61.814	59.414	2.400	
	0+003.51 MONITORING VALVE CHAMBER	61.858	59.585	2.400	
	0+003.90	61.828	59.428	2.400	
	0+003.90 VERTICAL BEND	61.750	59.350	2.400	
	0+003.90 VERTICAL BEND	61.762	59.355	2.017	
	0+003.25 VERTICAL BEND	61.759	59.353	2.024	
	0+003.56 VERTICAL BEND	61.759	59.350	2.058	
	0+003.43 VERTICAL BEND	61.750	59.350	2.400	
	0+007.87 VERTICAL BEND	61.760	59.350	2.510	
	0+003.56 VERTICAL BEND	61.759	59.350	2.058	
	0+045.11 200x150mm TEE WATER SERVICE	61.758	59.353	2.400	
	0+045.11 200x150mm TEE WATER SERVICE	61.758	59.353	2.400	
B	0+042.30 200x150mm TEE WATER SERVICE	61.725	59.325	2.400	
	0+044.80 45 BEND	61.725	59.325	2.400	
	0+047.03 45 BEND	61.687	59.287	2.400	
C	0+047.24 200x200 TEE	61.693	59.293	2.400	
	0+049.95 200 VB	61.591	59.191	2.400	
	0+056.17 HYDRAULIC	61.301	58.901	2.400	
	0+057.33 45 BEND	61.344	58.544	2.400	
	0+056.17 45 BEND	61.272	58.872	2.400	
D	0+062.92 200x150mm TEE WATER SERVICE	61.355	58.955	2.400	
	0+063.02 50mm WATER SERVICE	61.359	58.959	2.400	
	0+112.16 50mm WATER SERVICE	61.458	59.058	2.400	
E	0+113.16 200x150mm TEE WATER SERVICE	61.457	59.057	2.400	
F	0+115.16 200x150mm TEE WATER SERVICE	61.458	59.058	2.400	
L	0+000.30 200x150 TEE WATER SERVICE	61.797	59.397	2.400	
	0+003.16 150 VB	61.753	59.353	2.400	
G	0+011.33 150 CAP	61.750	59.350	2.400	
B	0+000.30 200x150 TEE WATER SERVICE	61.725	59.325	2.400	
	0+001.90 150 VB	61.717	59.317	2.400	
H	0+002.53 150 CAP	62.000	59.600	2.400	
D	0+000.30 200x150 TEE WATER SERVICE	61.355	58.955	2.400	
	0+005.71 150 VB	61.688	59.288	2.400	
	0+007.10 150 CAP	61.600	59.200	2.400	
E	0+020.90 200x150 TEE WATER SERVICE	61.467	59.067	2.400	
	0+013.58 150 VB	61.202	58.802	2.400	
J	0+014.87 150 CAP	61.400	59.000	2.400	
K	0+000.30 400x200 TEE CONNECTION TO EXISTING	61.811	59.411	2.400	
	0+001.90 VERTICAL BEND	61.760	59.360	2.400	
	0+001.55 VERTICAL BEND	61.762	59.350	2.832	
	0+003.50 VERTICAL BEND	61.767	59.365	2.837	
	0+003.90 VERTICAL BEND	61.764	59.364	2.400	
	0+012.34 200 VB	61.610	59.210	2.400	
L	0+016.14 200x150mm TEE WATER SERVICE	61.797	59.397	2.400	
	0+020.74 50mm WATER SERVICE	61.789	59.389	2.400	
	0+030.54 VERTICAL BEND	61.708	59.308	2.400	
	0+036.13 VERTICAL BEND	61.708	59.687	2.021	
	0+039.00 VERTICAL BEND	61.707	59.700	2.539	
	0+035.52 VERTICAL BEND	61.708	59.308	2.400	
	0+048.86 200 VB	61.692	59.292	2.400	
C	0+049.90 200x200 TEE	61.693	59.293	2.400	

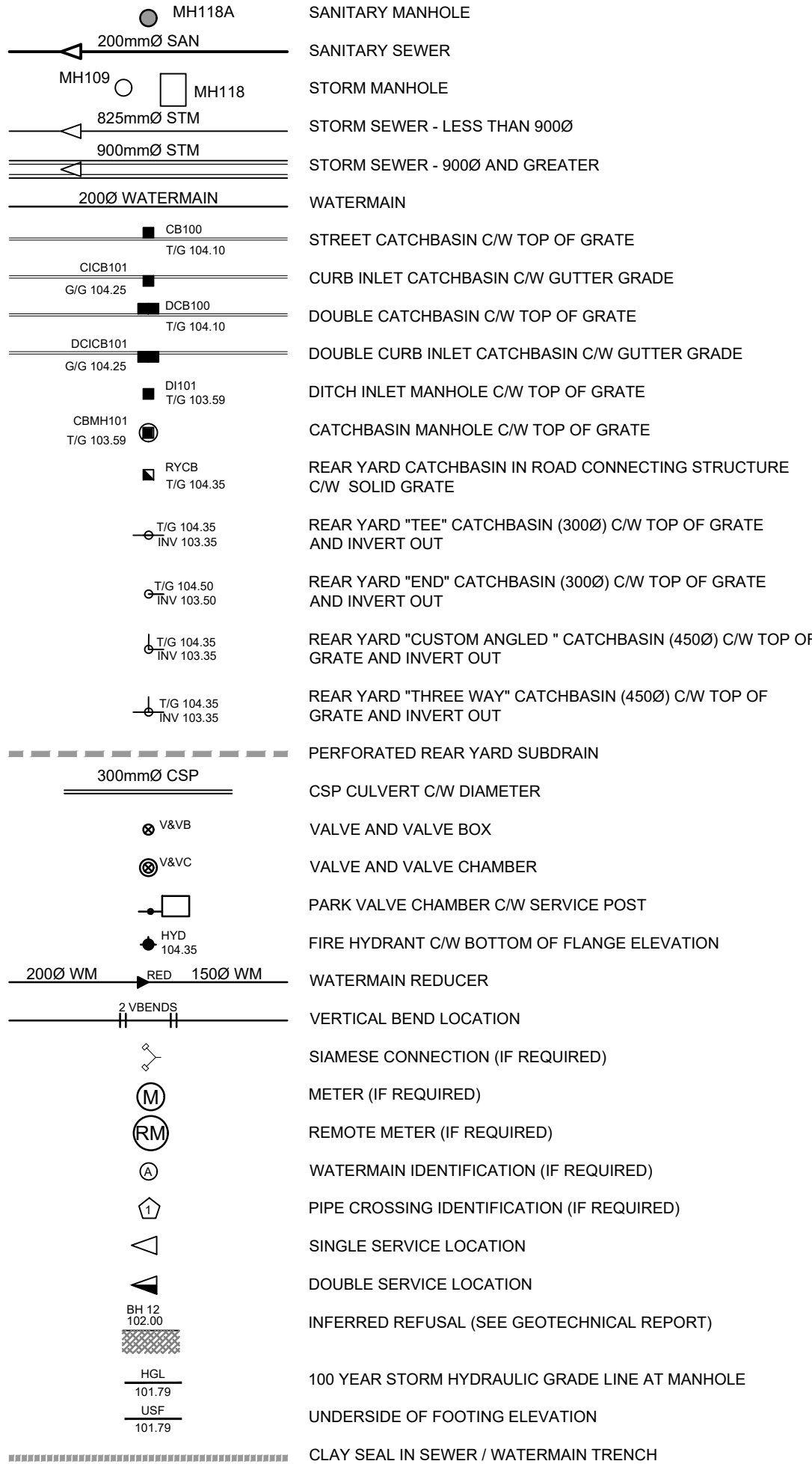
Pipe Interference Table			
Crossing No.	PIPE 1	PIPE 2	Clearance
1	WM Bottom 59.474	STM Top 59.974	0.500
2	SAN Bottom 59.665	WM Top 59.163	0.502
3	SAN Bottom 59.894	WM Top 59.150	0.944
4	WM Bottom 59.666	SAN Top 59.735	1.931
5	WM Bottom 59.148	SAN Top 59.322	0.826
6	WM Bottom 59.138	SAN Top 58.332	0.806
7	Bottom 59.604	STM Top 59.077	0.527
8	WM Bottom 59.769	STM Top 57.175	2.583
9	WM Bottom 59.142	STM Top 57.932	1.210
10	STM Bottom 61.526	WM Top 59.430	2.096
11	STM Bottom 59.443	WM Top 58.943	0.500
12	WM Bottom 58.717	SAN Top 58.147	0.570
13	STM Bottom 59.522	STM Top 59.022	0.500
14	WM Bottom 59.207	STM Top 57.807	1.250
15	STM Bottom 61.611	WM Top 59.546	2.065
16	STM Bottom 59.590	STM Top 59.090	0.500
17	WM Bottom 58.864	SAN Top 58.183	0.681
18	STM Bottom 57.562	STM Top 57.266	0.286
19	STM Bottom 57.541	STM Top 57.197	0.344
20	STM Bottom 58.739	STM Top 57.474	1.268
22	SAN Bottom 59.574	STM Top 58.330	1.244
23	Bottom 58.587	Top 57.788	0.799
24	STM Bottom 58.799	STM Top 56.006	0.793
25	SAN Bottom 58.662	STM Top 58.968	0.693
26	STM Bottom 59.353	SAN Top 58.124	1.228
27	STM Bottom 58.200	SAN Top 58.179	1.082
30	STM Bottom 61.422	SAN Top 58.218	3.204
31	SAN Bottom 58.159	STM Top 57.902	0.257
32	STM Bottom 58.078	STM Top 57.152	0.916
33	SAN Bottom 58.487	STM Top 57.155	1.332



GENERAL LEGEND



SERVICING LEGEND



Provide notes for watermains crossing under/above sewers. City Spec W25 is to be followed for crossings under sewers, W25.2 is to be followed for crossings above sewers.

Covered under general note 1. 250mm provided for all sewer-sewer crossings, 250mm provided when water crossing over sewer and 500mm provided when sewer crossing over water.

UTILITY NOTES :

- ALL MATERIALS AND CONSTRUCTION IS TO BE IN ACCORDANCE WITH THE CURRENT CITY OF OTTAWA STANDARD DRAWINGS & SPECIFICATIONS OR OPSD/OPSS IF CITY DRAWINGS AND SPECIFICATIONS DO NOT APPLY.
- THE POSITION OF UNDERGROUND AND ABOVEGROUND SERVICE, UTILITIES AND STRUCTURES ARE NOT NECESSARILY SHOWN ON THE CONTRACT DRAWINGS, AND WHERE SHOWN, THE ACCURACY OF THE POSITION OF SUCH SERVICE, UTILITIES AND STRUCTURES IS NOT GUARANTEED. THE CONTRACTOR IS RESPONSIBLE FOR DETERMINING THE EXACT LOCATION, SIZE, MATERIAL AND ELEVATION OF ALL EXISTING SERVICES AND UTILITIES PRIOR TO CONSTRUCTION.
- THE CONTRACTOR SHALL REPORT ALL CONFLICTS, DISCOVERIES OF ERROR AND DISCREPANCIES TO THE ENGINEER.
- THE CONTRACTOR SHALL BE RESPONSIBLE TO PROTECT AND ASSUME RESPONSIBILITY FOR ALL UTILITIES WHETHER OR NOT SHOW ON THESE DRAWINGS.
- THESE DRAWINGS ARE NOT TO BE SCALED OR USED FOR LAYOUT PURPOSES.
- THE COMPOSITE UTILITY PLAN HAS BEEN REVIEWED BY ARCADIS FOR CONFORMITY TO THE DESIGN CONCEPT FOR THE DEVELOPMENT AND FOR GENERAL ARRANGEMENT ONLY AND AS SUCH SHALL NOT RELIEVE THE CONTRACTOR OF RESPONSIBILITY FOR ERRORS OR OMISSIONS IN EITHER LAYOUT OR WORKMANSHIP.
- THIS DRAWING IS A COMPILATION OF OTHER UTILITY DESIGNS AND DOES NOT INDICATE IN ANY WAY THAT THE PARTY SIGNING THIS DRAWING HAS DESIGNED OR APPROVED THE RESPECTIVE UTILITY PLANTS INDICATED ON THIS DRAWING. THE DRAWING WAS PREPARED TO BE USED AS REFERENCE ONLY AS PER REQUIREMENTS OF THE CITY OF OTTAWA. IT IS THE CONTRACTORS RESPONSIBILITY TO ENSURE IT HAS REVIEWED THE CURRENT AND EXISTING DESIGNS BY HYDRO, STREET LIGHTING, BELL, CANADA POST, O.C. TRANSPQ, CABLE TV AND ANY OTHER PARTIES INCLUDED BUT NOT MENTIONED AND COMPLETE THE INSTALLATION IN ACCORDANCE WITH THE REQUIREMENTS OF THE STAKEHOLDER UTILITY DESIGNS.
- CONTRACTOR TO ADVISE ENGINEER IN WRITING OF ANY DISCREPANCIES IN THE HYDRO, BELL, ROGERS, ENBRIDGE, AND STREETLIGHT DRAWINGS, AND THE CUP AHEAD OF INSTALLATION.
- HYDRO INSPECTOR IS TO BE NOTIFIED AND PRESENT AHEAD OF HYDRO INSTALLATION.
- BELL AND ROGERS VAULT EASEMENT SIZE AND LOCATION ARE AS SHOWN ON THE CUP. ANY LOCATION DISCREPANCIES ARE TO BE REPORTED TO THE ENGINEER IN WRITING AHEAD OF INSTALLATION.
- BELL AND ROGERS VAULTS ARE TO BE PLACED TO THE EXTENT POSSIBLE IN THE RIGHT OF WAY RESPECTING THE REQUIRED CLEARANCES FROM DUCTS IN THE JOINT UTILITY TRENCH. IF VAULTS ARE ON PRIVATE PROPERTY THEY MUST BE PLACED WITHIN THE EASEMENT. VERIFY VAULT CORNERS PRIOR TO FINAL INSTALLATION AND FIBRE LINE PLACEMENT. VAULTS INSTALLED IN THE WRONG LOCATION OR OUTSIDE THE EASEMENTS WILL BE RELOCATED AT THE COST OF BELL AND ROGERS.
- UTILITY EASEMENTS ARE TO BE STAKED - ALL 4 CORNERS WITH PROPOSED FINAL GRADES MARKED ON THE STAKES.
- STREETLIGHTS ARE TO BE INSTALLED AT THE OFFSETS FROM FACE OF CURB SHOWN ON THE APPROVED ROAD SECTIONS FOR THE PROJECT.
- CAD FILES OF THE CUP PROVIDED BY THE ENGINEER ARE AS A COURTESY ONLY TO ASSIST THE CONTRACTOR. LAYOUT OF THE UTILITIES IS THE RESPONSIBILITY OF THE CONTRACTOR AND LEGAL SURVEYOR.

NOTES :

- ALL MATERIALS AND CONSTRUCTION IS TO BE IN ACCORDANCE WITH THE CURRENT CITY OF OTTAWA STANDARD DRAWINGS & SPECIFICATIONS OR OPSD/OPSS IF CITY DRAWINGS AND SPECIFICATIONS DO NOT APPLY.
- THE POSITION OF UNDERGROUND AND ABOVEGROUND SERVICE, UTILITIES AND STRUCTURES ARE NOT NECESSARILY SHOWN ON THE CONTRACT DRAWINGS, AND WHERE SHOWN, THE ACCURACY OF THE POSITION OF SUCH SERVICE, UTILITIES AND STRUCTURES IS NOT GUARANTEED. THE CONTRACTOR IS RESPONSIBLE FOR DETERMINING THE EXACT LOCATION, SIZE, MATERIAL AND ELEVATION OF ALL EXISTING SERVICES AND UTILITIES PRIOR TO CONSTRUCTION.
- THE CONTRACTOR SHALL REPORT ALL CONFLICTS, DISCOVERIES OF ERROR AND DISCREPANCIES TO THE ENGINEER.
- THE CONTRACTOR SHALL BE RESPONSIBLE TO PROTECT AND ASSUME RESPONSIBILITY FOR ALL UTILITIES WHETHER OR NOT SHOW ON THESE DRAWINGS.
- THE CONTRACTOR SHALL BE RESPONSIBLE TO PROTECT ALL LANDS BEYOND THE SITE LIMITS. ANY AREAS BEYOND THE SITE LIMITS, WHICH ARE DISTURBED DURING CONSTRUCTION, SHALL BE REPAIRED AND RESTORED TO ORIGINAL CONDITION OR BETTER, TO THE SATISFACTION OF THE ADJACENT LAND OWNER, THE OWNER, THE OWNERS REPRESENTATIVES AND/OR THE AUTHORITY HAVING JURISDICTION AT THE EXPENSE OF THE CONTRACTOR.
- WHERE NECESSARY, THE CONTRACTOR SHALL IMPLEMENT A TRAFFIC MANAGEMENT PLAN TO THE SATISFACTION OF THE CITY OF OTTAWA. ALL CONSTRUCTION SIGNAGE MUST CONFORM TO THE LATEST VERSION OF THE M.T.O. MANUAL OF UNIFORM TRAFFIC CONTROL DEVICES. ALL TEMPORARY TRAFFIC CONTROL MEASURES MUST BE REMOVED UPON THE COMPLETION OF THE WORKS.
- SHOULD ANY BURIED ARCHAEOLOGICAL REMAINS BE FOUND ON THE PROPERTY DURING CONSTRUCTION ACTIVITIES, THE CONTRACTOR SHALL NOTIFY THE OWNER TO CONTACT THE HERITAGE OPERATIONS UNIT OF THE ONTARIO MINISTRY OF CULTURE MUST BE NOTIFIED IMMEDIATE, AND WORK WITHIN THE AREA SHALL BE CEASED UNTIL FURTHER NOTICE.
- FOR GEOTECHNICAL INFORMATION REFER TO GEOTECHNICAL REPORT PG6498-1 PREPARED BY PATERSON GROUP.  
**DRIVE ISLE, FIRE ROUTE AND HEAVY DUTY AREAS: (690mm)**  
40mm - SUPERPAVE 12.5 ASPHALTIC CONCRETE  
50mm - SUPERPAVE 19.0 ASPHALTIC CONCRETE  
150mm - OPSS GRANULAR "A" CRUSHED STONE  
450mm - OPSS GRANULAR "B" TYPE II  
**CAR ONLY PARKING AREA: (600mm)**  
50mm - SUPERPAVE 12.5 ASPHALTIC CONCRETE  
150mm - OPSS GRANULAR "A" CRUSHED STONE  
300mm - OPSS GRANULAR "B" TYPE II
- FOR GEODETIC BENCHMARK AND GEOMETRIC LAYOUT OF STREET AND LOTS, REFER TO TOPOGRAPHICAL SURVEY AND PLAN OF SUBDIVISION PREPARED BY ANNIS O'SULLIVAN VOLLEBERG LTD. BENCHMARK BASED ON CAN-NET VIRTUAL REFERENCE SYSTEM NETWORK.
- FOR SITE PLAN INFORMATION, REFER TO SITE PLAN PREPARED BY ESPOSTO ARCHITECTS.
- THESE DRAWINGS ARE NOT TO BE SCALED OR USED FOR LAYOUT PURPOSES.
- ROADWAY SECTIONS REQUIRING GRADE RAISE TO PROPOSED SUB GRADE LEVEL TO BE FILLED WITH ACCEPTABLE NATIVE EARTH BORROW OR IMPORTED OPSS SELECTED SUBGRADE MATERIAL IF NATIVE MATERIAL IS DEFICIENT AS PER RECOMMENDATION OF GEOTECHNICAL ENGINEER.
- IN AREAS WHERE EXISTING GROUND IS BELOW THE PROPOSED ELEVATION OF SEWER AND WATERMAINS, GRADE RAISING AND FILLING IS TO BE IN ACCORDANCE WITH THE RECOMMENDATIONS OF THE GEOTECHNICAL REPORT. AS PER CITY GUIDELINES ALL WATERMAINS IN FILL AREAS ARE TO BE TIED WITH RESTRAINING JOINTS AND THRUST BLOCKS.
- THE CONTRACTOR SHALL IMPLEMENT THE EROSION AND SEDIMENT CONTROL PLAN PRIOR TO THE COMMENCEMENT OF ANY SITE CONSTRUCTION. ALL EROSION AND SEDIMENT CONTROL MEASURES SHALL BE INSTALLED TO THE SATISFACTION OF THE ENGINEER, OR ANY REGULATORY AGENCY. ALL EROSION AND SEDIMENT CONTROL MEASURES SHALL BE MAINTAINED UNTIL VEGETATION IS ESTABLISH OR UNTIL THE START OF A SUBSEQUENT PHASE.
- CONTRACTORS SHALL BE RESPONSIBLE FOR KEEPING CLEAN ALL ROADS WHICH BECOME COVERED IN DUST, DEBRIS AND/OR MUD AS A RESULT OF ITS CONSTRUCTION OPERATIONS.
- THE CONTRACTOR SHALL BE RESPONSIBLE FOR ANY ADDITIONAL BEDDING OR ADDITIONAL STRENGTH PIPE SHOULD THE MAXIMUM OPSD TRENCH WIDTH BE EXCEEDED.
- ALL PIPE, CULVERTS, STRUCTURES REFER TO NOMINAL INSIDE DIMENSIONS.
- SHOULD CLAY SEALS BE REQUIRED, THEY SHALL BE INSTALLED AS PER THE RECOMMENDATIONS WITHIN THE GEOTECHNICAL REPORT.
- UNLESS SPECIFICALLY NOTED OTHERWISE, PIPE MATERIALS SHALL BE AS FOLLOWS:  
-WATERMAINS TO BE PVC DR18  
-SANITARY SEWER TO BE PVC DR35  
-PERFORATED STORM SEWERS IN REAR YARDS AND LANDSCAPE AREAS TO BE HDPE  
-STORM SEWERS 375mm DIAMETER AND LESS TO BE PVC DR35  
-STORM SEWERS 450mm DIAMETER AND GREATER TO BE CONCRETE, CLASS AS PER OPSD 807 010 OR 807 030, OR HIGHER  
FOR SHALLOW SEWERS, REFER TO CITY STANDARD S35.
- ALL CONNECTIONS TO EXISTING WATERMAINS ARE TO BE COMPLETED BY CITY FORCES. CONTRACTOR IS TO EXCAVATE, BACKFILL, COMPACT AND REINSTATE.
- ANY WATERMAIN WITH LESS THAN 2.4m AND ANY SEWER WITH LESS THAN 2.0m DEPTH OF COVER REQUIRES THERMAL INSULATION AS PER CITY OF OTTAWA STANDARD W22 OR AS APPROVED BY THE ENGINEER.
- ALL FIRE HYDRANTS AS PER CITY STANDARD W19, c/w 150mmØ LEAD UNLESS OTHERWISE SPECIFIED.
- ALL STUBBED SEWERS SHALL HAVE PRE-MANUFACTURED CAPS INSTALLED.
- ALL CATCHBASINS SHALL HAVE A 600mm SUMP. ALL CATCHBASIN MANHOLES, AND ALL STORM MANHOLES WITH OUTLETTING PIPE SIZES LESS THAN 900mm, SHALL HAVE A 300mm SUMP.
- ALL SANITARY MANHOLES SHALL BE EQUIPPED WITH A WATERTIGHT COVER.
- ALL LEADS FOR STREET CATCHBASINS AND CURB INLET CATCHBASINS CONNECTED TO MAIN SHALL BE 200mmØ PVC DR35 @ MIN 2% SLOPE UNLESS NOTED OTHERWISE. ALL LEADS FOR RYCB'S CONNECTED TO MAIN SHALL BE 200mmØ PVC DR35 @ MIN 1% SLOPE UNLESS NOTED OTHERWISE.
- UNLESS SPECIFICALLY NOTED OTHERWISE, ALL STREET CATCHBASINS SHALL BE INSTALLED WITH TWO - 3.0m MINIMUM SUBDRAINS INSTALLED LONGITUDINALLY, PARALLEL WITH THE CURB. ALL CATCHBASINS IN ASPHALT AREAS, NOT ADJACENT TO A CURB, SHALL BE INSTALLED WITH FOUR - 3.0m MINIMUM SUBDRAINS INSTALLED ORTHOGONALLY.
- INLET CONTROL DEVICES SHALL BE INSTALLED PRIOR TO COMPLETING THE ROAD BASE (GRANULAR A).
- ALL SEWER SERVICE LATERALS WITH MAINLINE CONNECTIONS DEEPER THAN 5.0m REQUIRE A CONTROLLED SETTLEMENT JOINT.
- EACH BUILDING SHALL BE EQUIPPED WITH A SANITARY AND STORM SEWER BACKWATER VALVE AND CLEAN-OUT ON ITS PRIMARY SERVICE, AS PER ONTARIO BUILDING CODE REQUIREMENTS (BY OTHERS).
- THE SUBGRADE OF ALL STRUCTURES, PIPE, ROADS, SIDEWALKS, WALKWAYS, AND BUILDINGS SHALL BE INSPECTED BY THE GEOTECHNICAL ENGINEER PRIOR TO PROCEEDING WITH CONSTRUCTION.
- TOP COURSE ASPHALT SHALL NOT BE PLACED UNTIL THE FINAL CCTV INSPECTION AND NECESSARY REPAIRS HAVE BEEN COMPLETED TO THE SATISFACTION OF THE ENGINEER AND THE CITY OF OTTAWA.
- ALL RETAINING WALLS GREATER THAN 1.0m IN HEIGHT SHALL BE DESIGNED BY A QUALIFIED STRUCTURAL ENGINEER.
- ALL RETAINING WALLS GREATER THAN 0.6m IN HEIGHT REQUIRE A GUARD. ANY GUARD ON A RETAINING WALL GREATER THAN 1.0m IN HEIGHT SHALL BE DESIGNED BY THE QUALIFIED STRUCTURAL ENGINEER RESPONSIBLE FOR THE WALL DESIGN.
- UPON COMPLETION OF THE RETAINING WALL, THE CONTRACTOR SHALL REQUEST A CONFORMANCE CERTIFICATE FROM THE QUALIFIED ENGINEER RESPONSIBLE FOR THE WALL DESIGN.

CLIENT

TSL DAIRY INC.

COPYRIGHT

This drawing has been prepared solely for the intended use, thus any reproduction or distribution for any purpose other than authorized by Arcadis is forbidden. Written dimensions shall have precedence over scaled dimensions. Contractors shall verify and be responsible for all dimensions and conditions on the job, and Arcadis shall be informed of any variations from the dimensions and conditions shown on the drawing. Shop drawings shall be submitted to Arcadis for general conformance before proceeding with fabrication.

Arcadis Professional Services (Canada) Inc.  
formerly B| Group Professional Services (Canada) Inc.

ISSUES

No.	DESCRIPTION	DATE
1	SUBMISSION NO. 1 FOR CITY REVIEW	2024-02-14
2	SUBMISSION NO. 2 FOR CITY REVIEW	2024-06-27
3	SUBMISSION NO. 3 FOR CITY REVIEW	2024-10-04
4		
5		
6		

SEE 010, FOR NOTES, LEGEND, CB TABLE, STREET SECTIONS AND DETAILS

KEY PLAN

SEAL

PRIME CONSULTANT

ARCADIS

333 Preston Street - Suite 500  
Ottawa ON K1S 5N4 Canada  
tel 613 225 1311  
www.arcadis.com

PROJECT

1015 DAIRY DRIVE

1015 DAIRY DRIVE

PROJECT NO:  
142817

DRAWN BY:  
M.M./A.B.

CHECKED BY:  
R.M./D.Y.

PROJECT MGR:  
R.M.

APPROVED BY:  
D.Y.

SHEET TITLE

NOTES DETAILS CB DATA  
TABLE

SHEET NUMBER

C-010

ISSUE

3

File Location: \\1142817\_1015\_Dairy\_Dr\0\_Production\7\_03\_Design\04\_Civil\SheetC-010 NOTES DETAILS CB DATA TABLE.dwg

Printed: October 4, 2024 2:42:01 PM by Sluma, Don

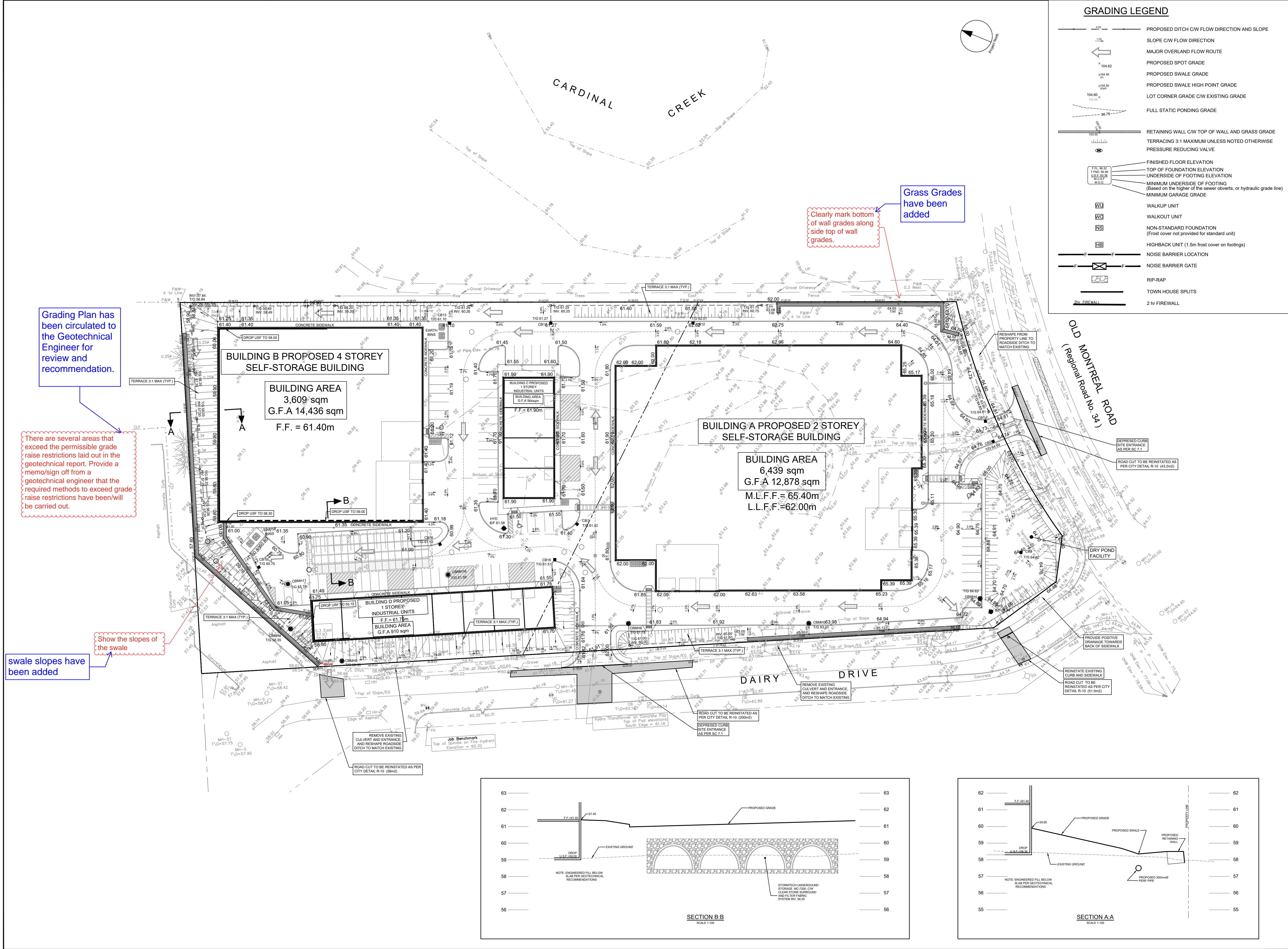
Last Saved: June 27, 2024, by sluma

Scale: 1:1000

D07-12-13-0249

XXXX





GRADING LEGEND	
	PROPOSED DITCH C/W FLOW DIRECTION AND SLOPE
	SLOPE C/W FLOW DIRECTION
	MAJOR OVERLAND FLOW ROUTE
	PROPOSED SPOT GRADE
	PROPOSED SWALE GRADE
	PROPOSED SWALE HIGH POINT GRADE
	LOT CORNER GRADE C/W EXISTING GRADE
	FULL STATIC PONDING GRADE
	RETAINING WALL C/W TOP OF WALL AND GRASS GRADE
	TERRACING 3:1 MAXIMUM UNLESS NOTED OTHERWISE
	PRESSURE REDUCING VALVE
	FINISHED FLOOR ELEVATION
	TOP OF FOUNDATION ELEVATION
	UNDERSIDE OF FOOTING ELEVATION
	MINIMUM UNDERSIDE OF FOOTING (Based on the higher of the sewer overtop, or hydraulic grade line)
	MINIMUM GARAGE GRADE
	WALKUP UNIT
	WALKOUT UNIT
	NON-STANDARD FOUNDATION (First cover not provided for standard unit)
	HIGHBACK UNIT (1.5m frost cover on footings)
	NOISE BARRIER LOCATION
	NOISE BARRIER GATE
	RIP-RAP
	TOWN HOUSE SPLITS
	2 hr FIRE WALL

CLIENT

TSL DAIRY INC.

COPYRIGHT

This drawing has been prepared solely for the intended use, thus any reproduction or distribution for any purpose other than authorized by Arcadis is forbidden. Written dimensions shall have precedence over scaled dimensions. Contractors shall verify and be responsible for all dimensions and conditions on the job, and Arcadis shall be informed of any variations from the dimensions and conditions shown on the drawing. Shop drawings shall be submitted to Arcadis for general conformance before proceeding with fabrication.

Arcadis Professional Services (Canada) Inc.

Formerly B Group Professional Services (Canada) Inc.

ISSUES		
No.	DESCRIPTION	DATE
1	SUBMISSION NO. 1 FOR CITY REVIEW	2024-02-14
2	SUBMISSION NO. 2 FOR CITY REVIEW	2024-06-27
3	SUBMISSION NO. 3 FOR CITY REVIEW	2024-10-04
4		
5		
6		

SEE 010, FOR NOTES, LEGEND, CB TABLE, STREET SECTIONS AND DETAILS

KEY PLAN

1:500 0 5 10 15 20m

SEAL

PRIME CONSULTANT

333 Preston Street - Suite 500  
Ottawa ON K1S 5N4 Canada  
tel 613 225 1311  
www.arcadis.com

PROJECT

1015 DAIRY DRIVE

PROJECT NO:

142817

DRAWN BY:

M.M./A.B.

CHECKED BY:

R.M./D.Y.

PROJECT MGR:

R.M.

APPROVED BY:

D.Y.

SHEET TITLE

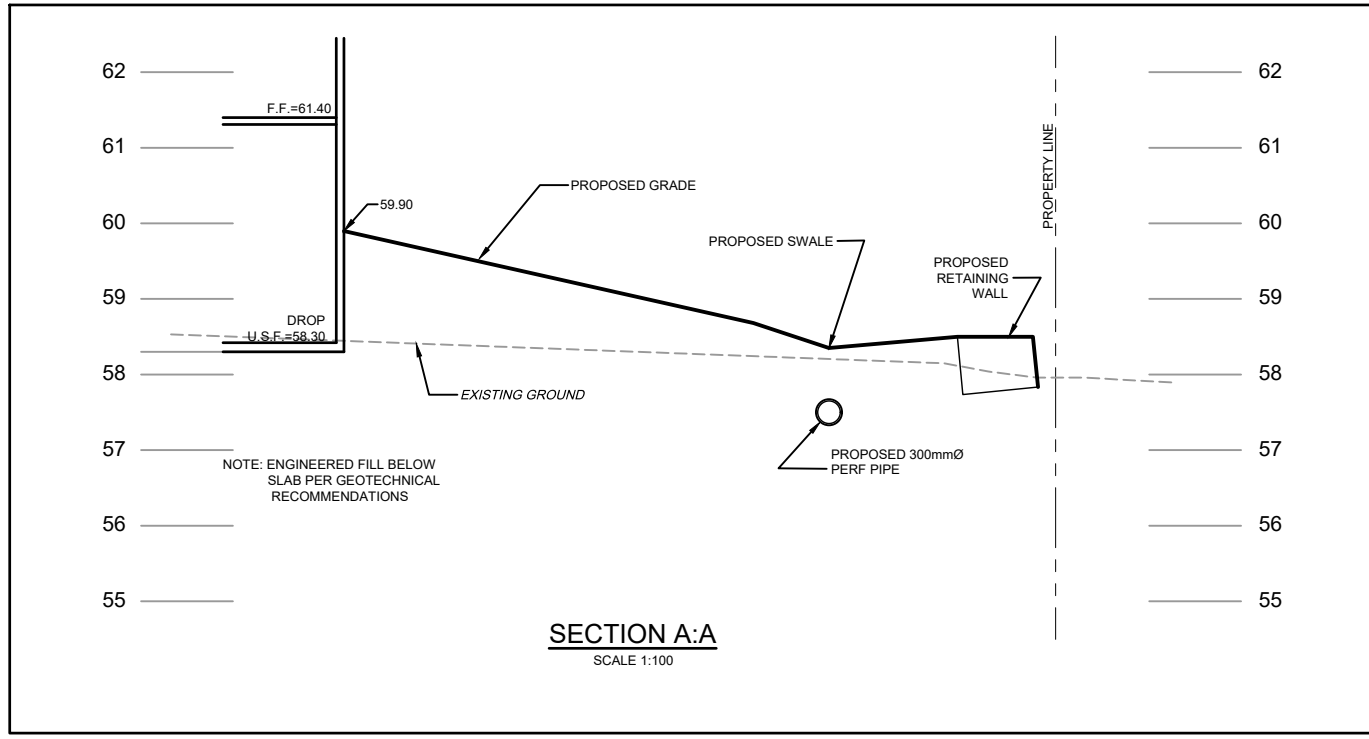
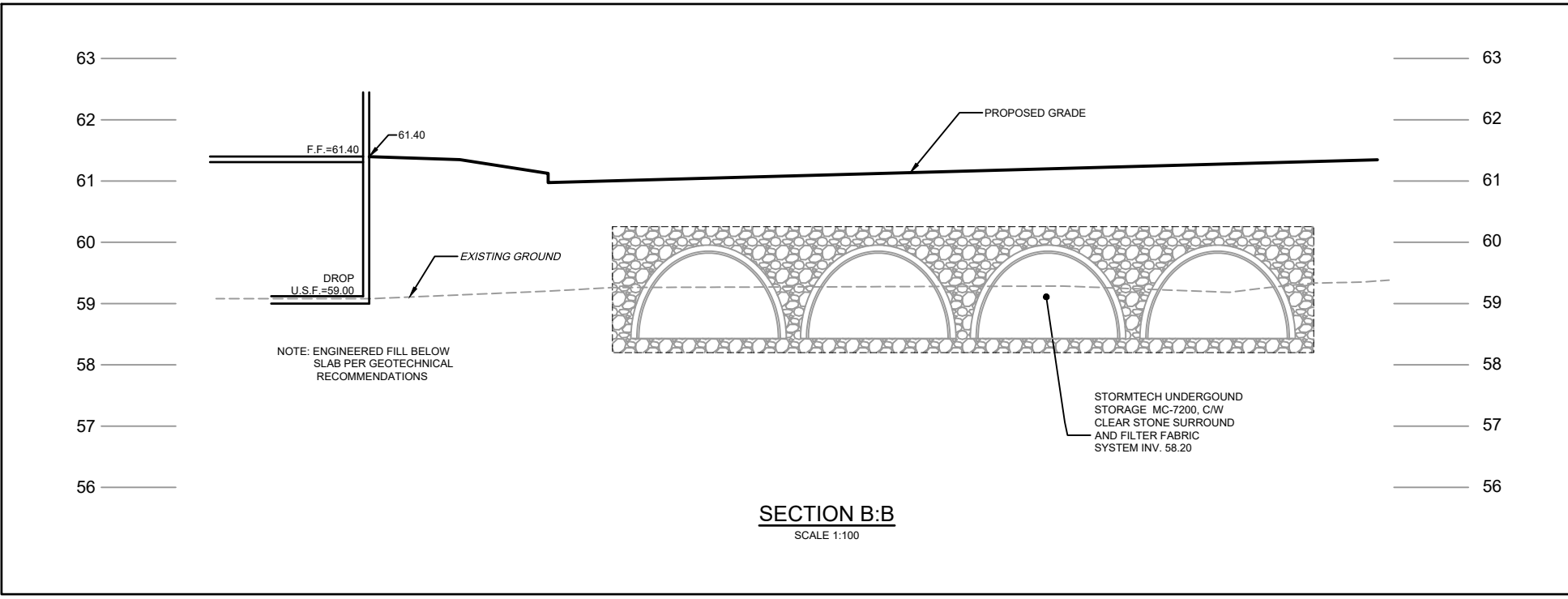
GRADING PLAN

SHEET NUMBER

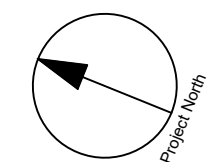
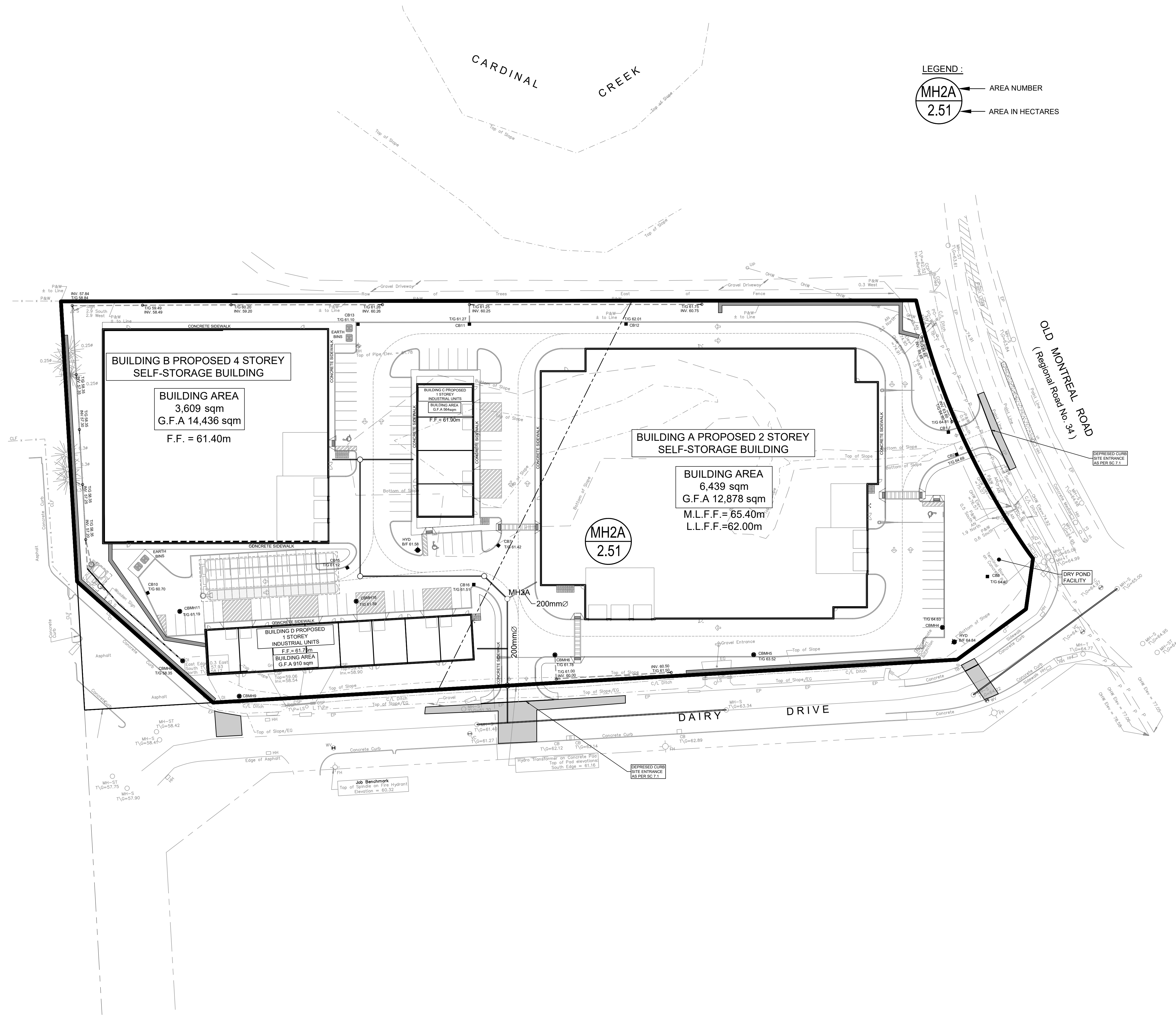
C-200

ISSUE

3







CLIENT

TSL DAIRY INC.

COPYRIGHT

This drawing has been prepared solely for the intended use, thus any reproduction or distribution for any purpose other than authorized by Arcadis is forbidden. Written dimensions shall have precedence over scaled dimensions. Contractors shall verify and be responsible for all dimensions and conditions on the job, and Arcadis shall be informed of any variations from the dimensions and conditions shown on the drawing. Shop drawings shall be submitted to Arcadis for general conformance before proceeding with fabrication.

Arcadis Professional Services (Canada) Inc.

Formerly (B) Group Professional Services (Canada) Inc.

ISSUES		
No.	DESCRIPTION	DATE
1	SUBMISSION NO. 1 FOR CITY REVIEW	2024-02-14
2	SUBMISSION NO. 2 FOR CITY REVIEW	2024-06-27
3	SUBMISSION NO. 3 FOR CITY REVIEW	2024-10-04
4		
5		
6		

SEE 010, FOR NOTES, LEGEND, CB TABLE, STREET SECTIONS AND DETAILS

KEY PLAN

1:500

SEAL

PRIME CONSULTANT

333 Preston Street - Suite 500  
Ottawa ON K1S 5N4 Canada  
tel 613 225 1311  
www.arcadis.com

PROJECT

1015 DAIRY DRIVE

1015 DAIRY DRIVE

PROJECT NO:

142817

DRAWN BY:

M.M./A.B.

CHECKED BY:

R.M./D.Y.

PROJECT MGR:

R.M.

APPROVED BY:

D.Y.

SHEET TITLE

SANITARY DRAINAGE AREA PLAN

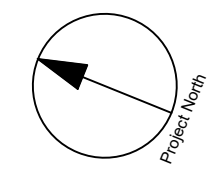
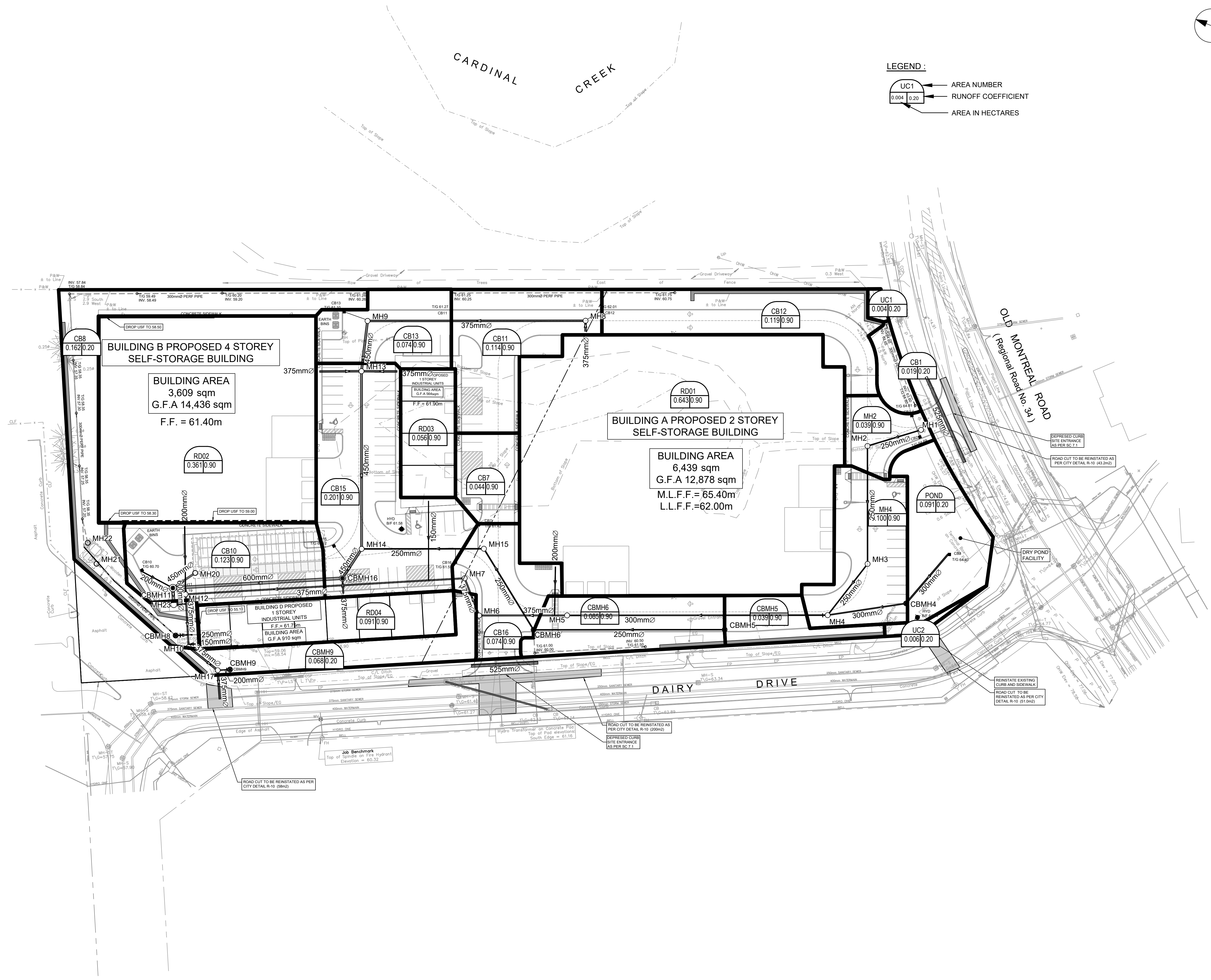
SHEET NUMBER

C-400

ISSUE

3





CLIENT

TSL DAIRY INC.

COPYRIGHT

This drawing has been prepared solely for the intended use, thus any reproduction or distribution for any purpose other than authorized by Arcadis is forbidden. Written dimensions shall have precedence over scaled dimensions. Contractors shall verify and be responsible for all dimensions and conditions on the job, and Arcadis shall be informed of any variations from the dimensions and conditions shown on the drawing. Shop drawings shall be submitted to Arcadis for general conformance before proceeding with fabrication.

Arcadis Professional Services (Canada) Inc.

Formerly B Group Professional Services (Canada) Inc.

ISSUES		
No.	DESCRIPTION	DATE
1	SUBMISSION NO. 1 FOR CITY REVIEW	2024-02-14
2	SUBMISSION NO. 2 FOR CITY REVIEW	2024-06-27
3	SUBMISSION NO. 3 FOR CITY REVIEW	2024-10-04
4		
5		
6		

SEE 010, FOR NOTES, LEGEND, CB TABLE, STREET SECTIONS AND DETAILS

KEY PLAN

1:500

SEAL

PRIME CONSULTANT

333 Preston Street - Suite 500  
Ottawa ON K1S 5N4 Canada  
tel 613 225 1311  
www.arcadis.com

PROJECT

1015 DAIRY DRIVE

1015 DAIRY DRIVE

PROJECT NO:

142817

DRAWN BY:

M.M./A.B.

CHECKED BY:

R.M./D.Y.

PROJECT MGR:

R.M.

APPROVED BY:

D.Y.

SHEET TITLE

STORM DRAINAGE AREA PLAN

SHEET NUMBER

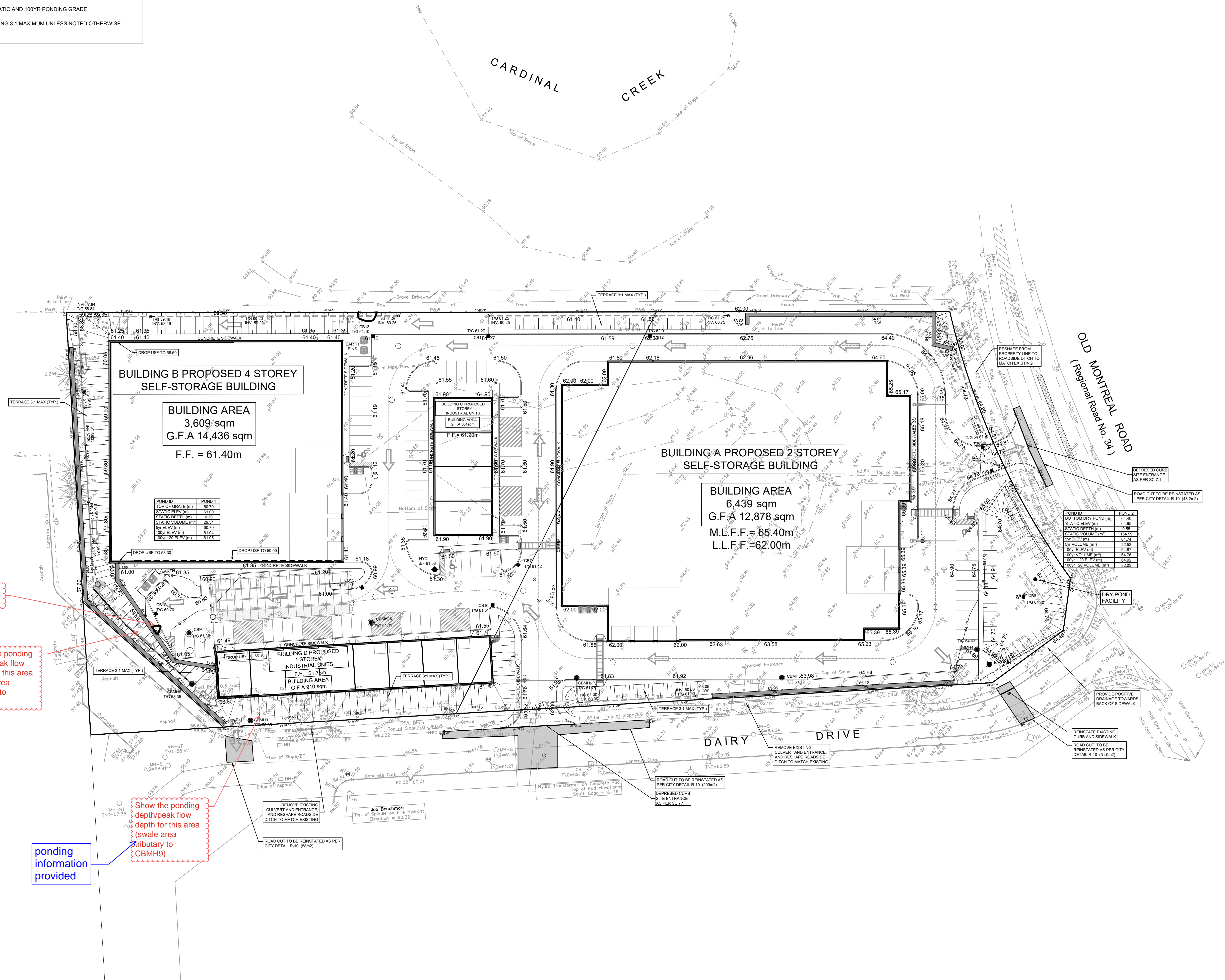
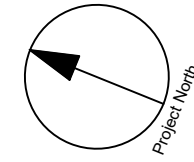
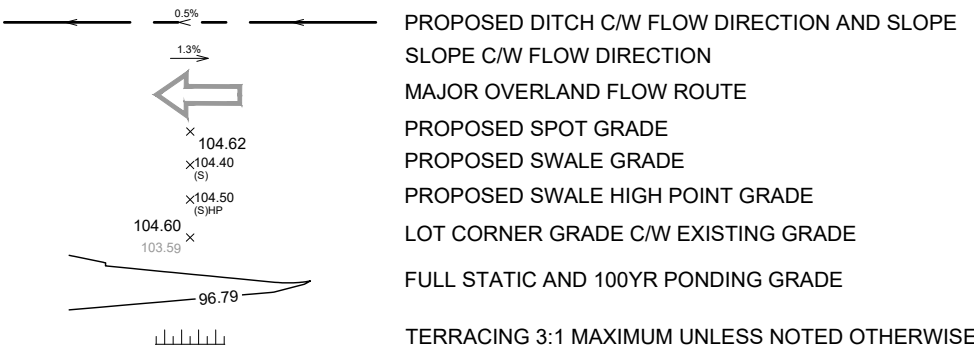
C-500

ISSUE

3



PONDING LEGEND



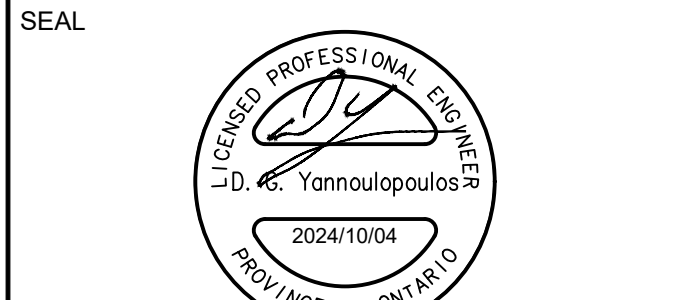
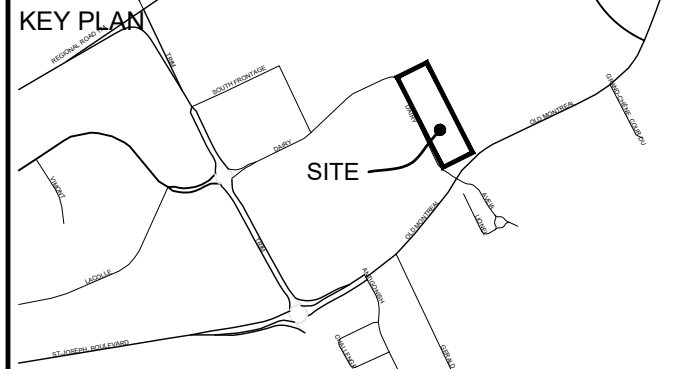
CLIENT  
TSL DAIRY INC.

COPYRIGHT  
This drawing has been prepared solely for the intended use, thus any reproduction or distribution for any purpose other than authorized by Arcadis is forbidden. Written dimensions shall have precedence over scaled dimensions. Contractors shall verify and be responsible for all dimensions and conditions on the job, and Arcadis shall be informed of any variations from the dimensions and conditions shown on the drawing. Shop drawings shall be submitted to Arcadis for general conformance before proceeding with fabrication.

Arcadis Professional Services (Canada) Inc.  
Formerly IB Group Professional Services (Canada) Inc.

ISSUES		
No.	DESCRIPTION	DATE
1	SUBMISSION NO. 1 FOR CITY REVIEW	2024-02-14
2	SUBMISSION NO. 2 FOR CITY REVIEW	2024-06-27
3	SUBMISSION NO. 3 FOR CITY REVIEW	2024-10-04
4		
5		
6		

SEE 010, FOR NOTES, LEGEND, CB TABLE, STREET SECTIONS AND DETAILS



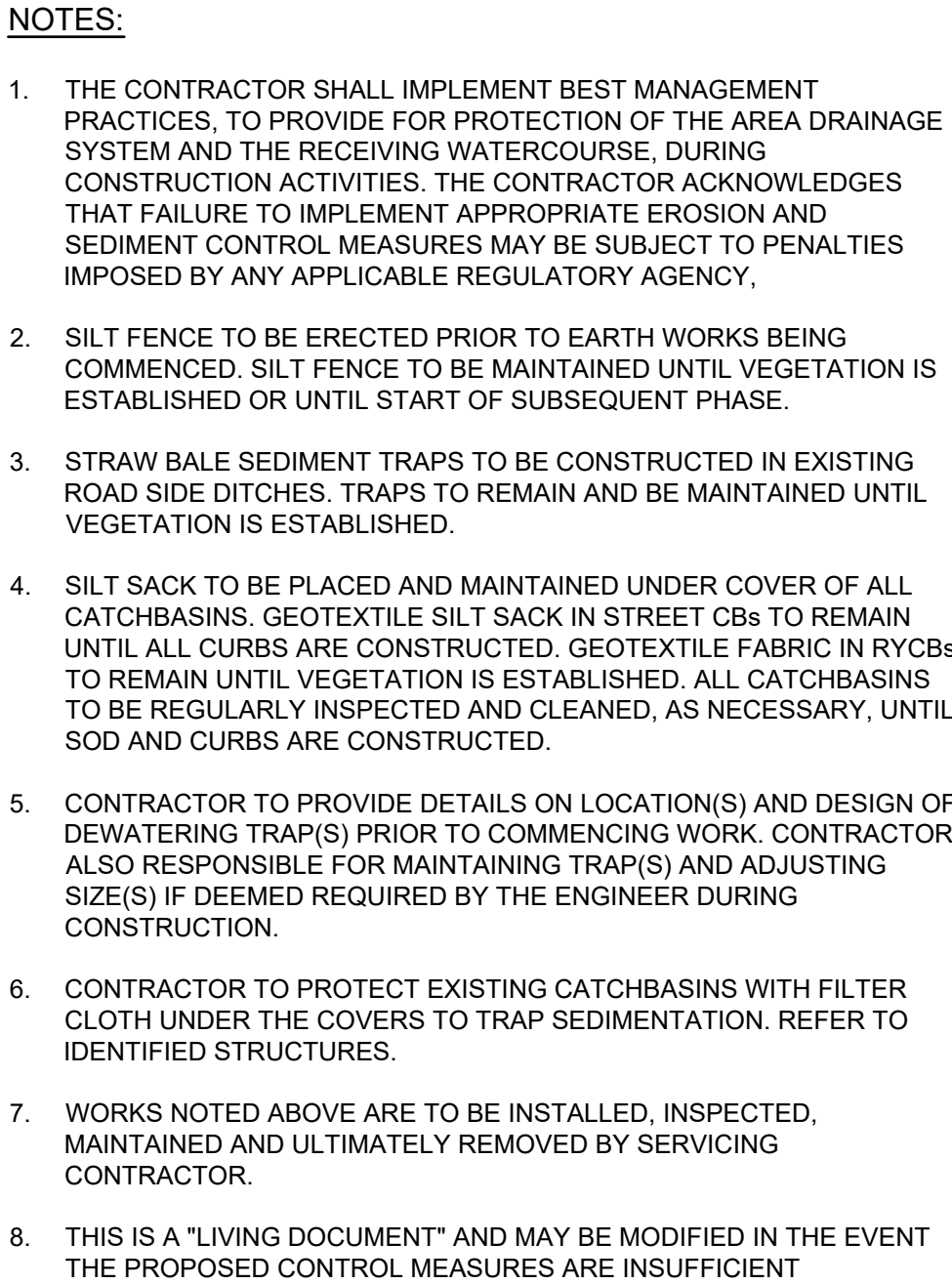
PRIME CONSULTANT  
**ARCADIS**  
333 Preston Street - Suite 500  
Ottawa ON K1S 5N4 Canada  
tel 613 225 1311  
www.arcadis.com

PROJECT  
1015 DAIRY DRIVE  
1015 DAIRY DRIVE  
PROJECT NO:  
142817  
DRAWN BY:  
M.M./A.B.  
PROJECT MGR:  
R.M.  
CHECKED BY:  
R.M./D.Y.  
APPROVED BY:  
D.Y.







SHEET TITLE  
PONDING PLAN

SHEET NUMBER  
C-600  
ISSUE  
3





**LEGEND:**

	LIGHT DUTY SILT FENCE AS PER OPSD-219.110
	SNOW FENCE
	STRAW BALE CHECK DAM AS PER OPSD-219.180
	ROCK CHECK DAM AS PER OPSD-219.210
	SILT SACK PLACED UNDER EXISTING CB COVER
	TEMPORARY MUD MAT 0.15m THICK 50mm CLEAR STONE ON NON WOVEN FILTER CLOTH

CLIENT  
TSL DAIRY INC.

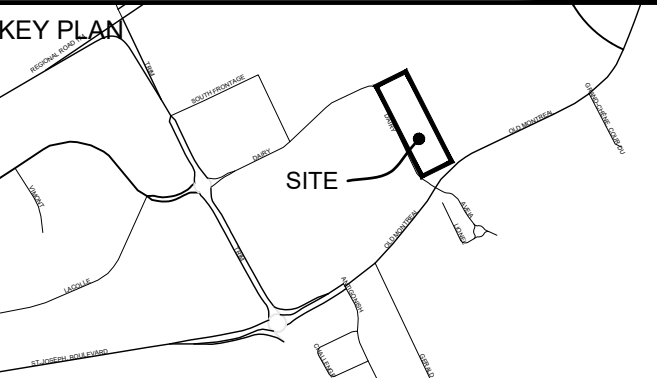
**COPYRIGHT**

This drawing has been prepared solely for the intended use, thus any reproduction or distribution for any purpose other than authorized by Arcadis is forbidden. Written dimensions shall have precedence over scaled dimensions. Contractors shall verify and be responsible for all dimensions and conditions on the job, and Arcadis shall be informed of any variations from the dimensions and conditions shown on the drawing. Shop drawings shall be submitted to Arcadis for general conformance before proceeding with fabrication.

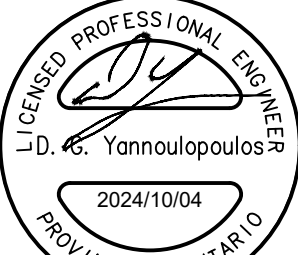
**Arcadis Professional Services (Canada) Inc.**  
formerly IBI Group Professional Services (Canada) Inc.

ISSUES		
No.	DESCRIPTION	DATE
1	SUBMISSION NO. 1 FOR CITY REVIEW	2024-02-14
2	SUBMISSION NO. 2 FOR CITY REVIEW	2024-06-27
3	SUBMISSION NO. 3 FOR CITY REVIEW	2024-10-04
4		
5		
6		

SEE 010, FOR NOTES, LEGEND, CB TABLE, STREET  
SECTIONS AND DETAILS



SEAI



PRIME CONSULTANT

 **ARCADIS**

333 Preston Street - Suite 500  
Ottawa ON K1S 5N4 Canada  
tel 613 225 1311  
[www.arcadis.com](http://www.arcadis.com)

PROJECT 1015 DAIRY DRIVE

1015 DAIRY DRIVE

DRAWN BY: <b>M.M./A.B.</b>	CHECKED BY: <b>R.M./D.Y.</b>
PROJECT MGR: <b>R.M.</b>	APPROVED BY: <b>D.Y.</b>

SHEET TITLE

EROSION AND SEDIMENT  
CONTROL PLAN

SHEET NUMBER	ISSUE
C-900	3

