

CITY OF OTTAWA
2760 SHEFFILED ROAD

PROPOSED PRIVATE ACCESS
CONCEPT PLAN

Contract No.
7337

Dwg. No.
01

Sheet 1 of 4

Asset Group
ISD

Des.
RM

Chk'd.
AEG

Dwn.
RM

Chk'd.
AEG

Utility Circ. No.
Index No.

Cost. Inspector

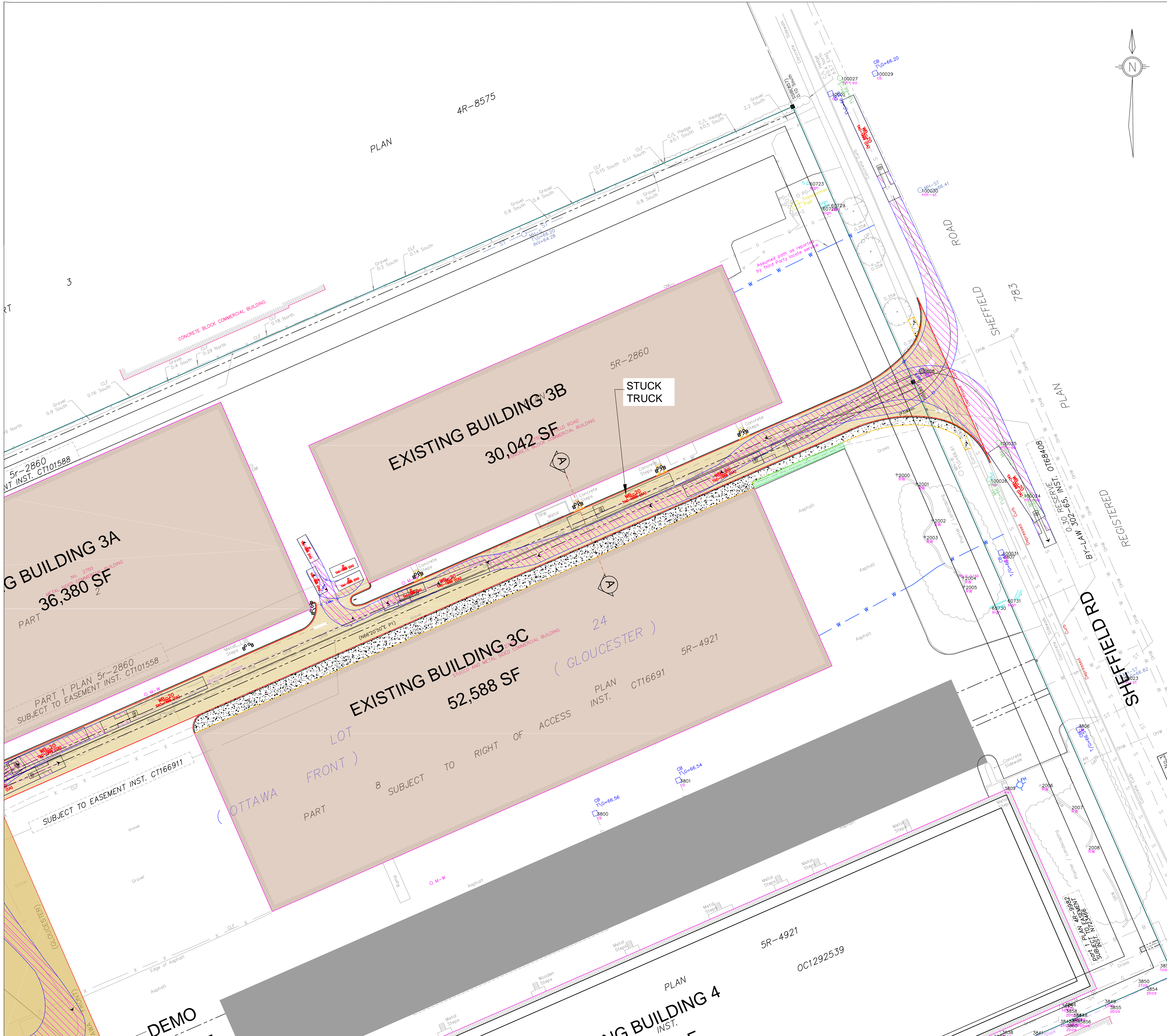
Scale:
8m 0 8m
HORIZ 1:400

PROJECT REF. NUMBER: 7344

NOTE: The location of utilities is approximate only, the exact location should be determined by consulting the municipal authorities and utility companies concerned. The contractor shall prove the location of utilities and shall be responsible for adequate protection from damage.


No.	Description	By	Date (dd/mm/yy)
1	AS PER CITY COMMENTS	xx	XX/XX/XX

- NOTES
- OBSTACLES SUCH AS TREES, HYDRO POLES, AND THE IMPACTS/PROVISIONS TO POTENTIAL GAS SERVICES AND OTHER EXISTING UTILITIES ARE TO BE CIRCULATED TO STANTEC FOR REVIEW AND RESOLUTION.
 - 8NO. ROOF DRAINAGE PIPES PROTRUDING FROM BUILDING 3C ON SOUTH SIDE OF ALLEY TO BE RE-ROUTED AWAY FROM ALLEY AND SIDEWALK.
 - THE SURFACE BETWEEN BUILDINGS NO. 3A AND 3B AND THE ROADWAY IN THE NORTH AND SURFACE BETWEEN BUILDING NO. 3C AND SIDEWALK IN THE SOUTH TO BE DETERMINED BY THE LANDSCAPING PLANNER.
 - THERE ARE THREE (3) TREES IN FRONT OF 2750 SHEFFIELD ROAD THAT WOULD REMAIN, HOWEVER, DURING THE SUMMER MONTHS, THE FOLIAGE ON THESE TREES COULD OBSCURE THE 150M LONG SIGHT LINE OF A HEAVY VEHICLE LEAVING THE ALLEY ACCESS LOOKING TO THE NORTH AND ATTEMPTING TO TURN ONTO SHEFFIELD ROAD. IF THIS IS THE CASE, THE REMAINING TREES SHOULD BE TRIMMED TO ASSURE NO OBSTRUCTION OF THE SIGHT LINE.



CITY OF OTTAWA
2760 SHEFFILED ROAD

PROPOSED PRIVATE ACCESS
VEHICLE TURNING MANEUVERS



Castleglenn
Consultants
Engineers, Project Managers & Planners

PROJECT REF. NUMBER: 7344

Contract No.
7337

Dwg. No.
03

Sheet 3 of 4

Asset Group
ISD

Des.
RM

Chk'd.
AEG

Dwn.
RM

Chk'd.
AEG

Utility Circ. No.

Index No.

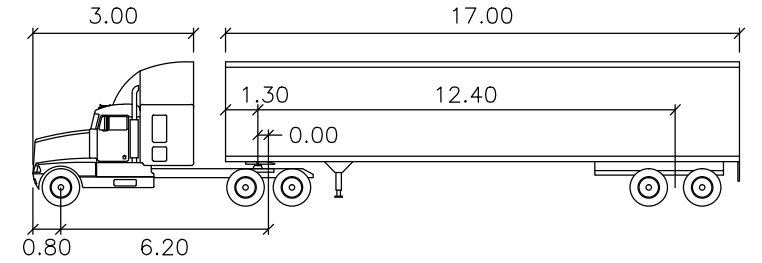
Cost. Inspector

Scale:
8m 0 8m
HORIZ 1:400

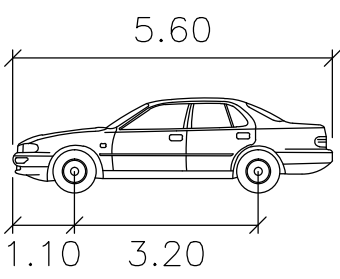
NOTE: The location of utilities is approximate only, the exact location should be determined by consulting the municipal authorities and utility companies concerned. The contractor shall prove the location of utilities and shall be responsible for adequate protection from damage.

No.	Description	By	Date (dd/mm/yy)
1	AS PER CITY COMMENTS	xx	XX/XX/XX

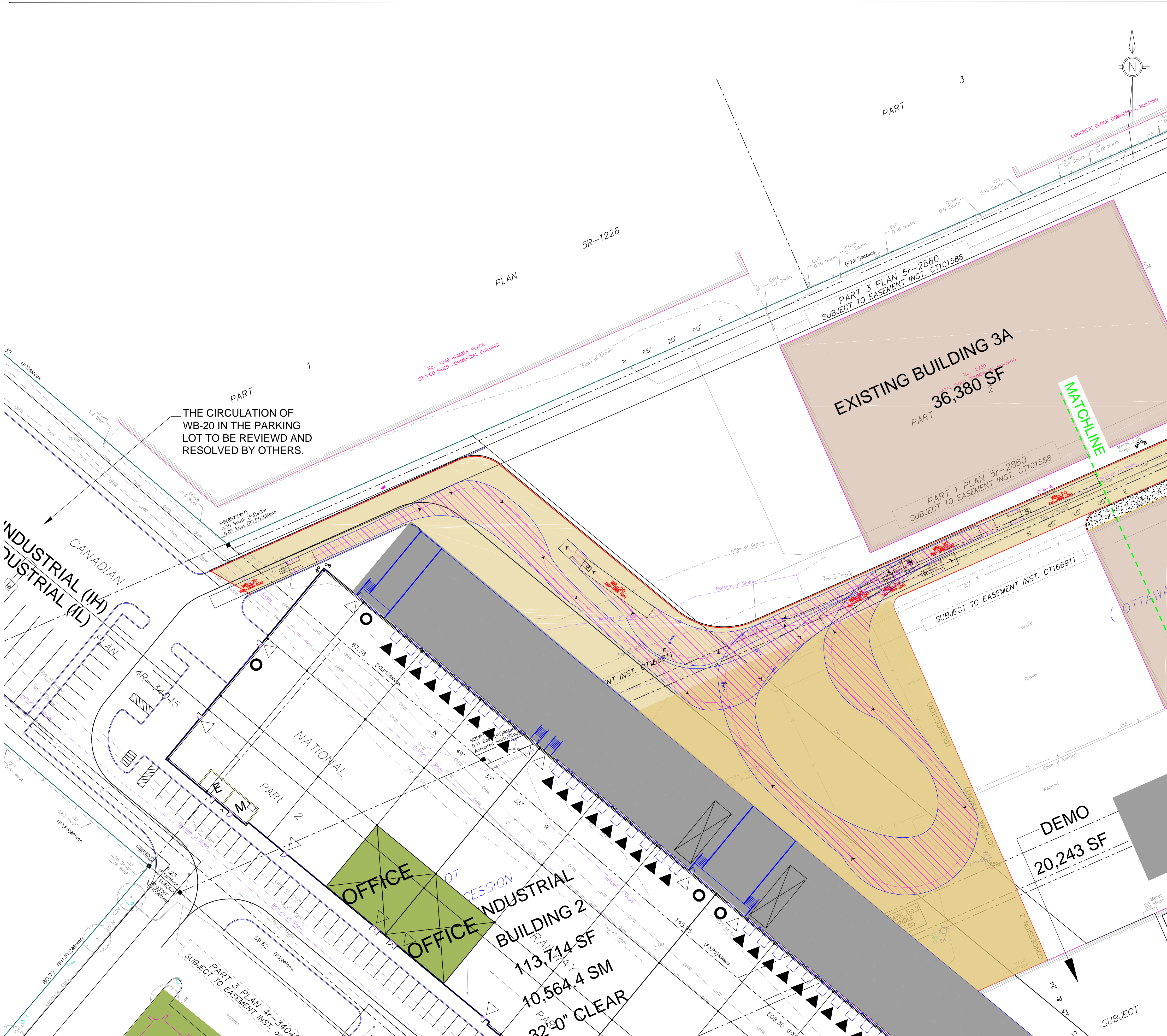
NOTES



WB-20	meters		
Tractor Width	: 2.60	Lock to Lock Time	: 6.0
Trailer Width	: 2.60	Steering Angle	: 28.3
Tractor Track	: 2.60	Articulating Angle	: 70.0
Trailer Track	: 2.60		




P	meters		
Width	: 2.00		
Track	: 2.00		
Lock to Lock Time	: 6.0		
Steering Angle	: 36.2		



CITY OF OTTAWA
2760 SHEFFILED ROAD

PROPOSED PRIVATE ACCESS
VEHICLE MANEUVERS



**Castleglenn
Consultants**
Engineers, Project Managers & Planners

PROJECT REF. NUMBER: 7344

Contract No. 7337		Dwg. No. 04	
Sheet 4 of 4			
Asset Group ISD			
Des. RM	Chk'd. AEG		
Dwn. RM	Chk'd. AEG		
Utility Circ. No.	Index No.		
Cost. Inspector			
Scale: 8m 0 8m HORIZ 1:400			

NOTE: The location of utilities is approximate only, the exact location should be determined by consulting the municipal authorities and utility companies concerned. The contractor shall prove the location of utilities and shall be responsible for adequate protection from damage.

REVISIONS	No.	Description	By	Date (dd/mm/yy)
	1	AS PER CITY COMMENTS	xx	XX/XX/XX

NOTES

