

ANDREW MCCREIGHT
MANAGER, DEVELOPMENT REVIEW CENTRAL
PLANNING, DEVELOPMENT & BUILDING SERVICES
DEVELOPMENT DEPARTMENT, CITY OF OTTAWA

APPROVED
By Andrew McCreight at 8:39 am, Jun 19, 2025

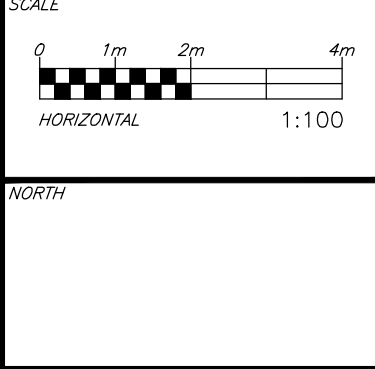
**EROSION AND SEDIMENT CONTROLS
DURING CONSTRUCTION.**

- DURING ALL CONSTRUCTION ACTIVITIES, EROSION AND SEDIMENTATION SHALL BE CONTROLLED BY THE FOLLOWING TECHNIQUES:
1. THE CONTRACTOR SHALL IMPLEMENT BEST MANAGEMENT PRACTICES, TO PROVIDE FOR PROTECTION OF THE AREA DRAINAGE SYSTEM AND THE RECEIVING WATERCOURSE, DURING CONSTRUCTION ACTIVITIES. THE CONTRACTOR ACKNOWLEDGES THAT FAILURE TO IMPLEMENT APPROPRIATE EROSION AND SEDIMENT CONTROL MEASURES MAY BE SUBJECT TO PENALTIES IMPOSED BY ANY APPLICABLE REGULATORY AGENCY. CONTRACTOR IS RESPONSIBLE TO KEEP THE ROADS FREE AND CLEAN FROM MUD OR DEBRIS.
 2. LIMITING THE EXTENT OF EXPOSED SOILS AT ANY GIVEN TIME.
 3. REVEGETATION OF EXPOSED AREAS AS SOON AS POSSIBLE.
 4. MINIMIZATION OF AREA TO BE CLEARED AND DISRUPTION TO ADJACENT AREAS.
 5. INSTALLATION OF FILTER CLOTH BETWEEN FRAME AND COVER ON ALL PROPOSED CATCH BASINS AND CATCH BASIN MANHOLES.
 6. A SILT FENCE TO BE INSTALLED 0.3m INSIDE THE SITE PROPERTY LINE TO LOCATIONS SHOWN ON THIS DRAWING.
 7. A VISUAL INSPECTION SHALL BE COMPLETED DAILY ON SEDIMENT CONTROL BARRIERS AND ANY DAMAGE REPAIRED IMMEDIATELY. CARE WILL BE TAKEN TO PREVENT DAMAGE DURING CONSTRUCTION OPERATIONS.
 8. IN SOME CASES SOME BARRIERS MAY BE REMOVED TEMPORARILY TO ACCOMMODATE THE CONSTRUCTION OPERATIONS. THE AFFECTED BARRIERS WILL BE REINSTATED AT NIGHT WHEN CONSTRUCTION IS COMPLETED.
 9. THE SEDIMENT CONTROL DEVICES WILL BE CLEANED OF ACCUMULATED SILT AS REQUIRED. THE DEBRIS WILL BE DISPOSED OF AS PER THE REQUIREMENTS OF THE CONTRACT.
 10. DURING THE COURSE OF CONSTRUCTION IF THE ENGINEER BELIEVES THAT ADDITIONAL PREVENTION METHODS ARE REQUIRED TO CONTROL EROSION AND SEDIMENTATION, THE CONTRACTOR WILL INSTALL ADDITIONAL SILT FENCES OR OTHER METHODS AS REQUIRED TO THE SATISFACTION OF THE ENGINEER.
 11. CONSTRUCTION AND MAINTENANCE REQUIREMENTS FOR EROSION AND SEDIMENT CONTROLS TO COMPLY WITH ONTARIO PROVINCIAL STANDARD SPECIFICATION (OPSS) OPSS 805, AND CITY OF OTTAWA SPECIFICATIONS.
 12. SEDIMENT AND EROSION CONTROL MEASURES MAY BE MODIFIED IN THE FIELD AT THE DISCRETION OF THE CITY OF OTTAWA SITE INSPECTOR OR CONSERVATION AUTHORITY.

CAUTION
THE POSITION OF ALL POLE LINES, CONDUITS, WATERMAINS, SEWERS AND OTHER UNDERGROUND AND OVERGROUND UTILITIES AND STRUCTURES IS NOT NECESSARILY SHOWN ON THE CONTRACT DRAWINGS, AND WHERE SHOWN, THE ACCURACY OF THE POSITION OF SUCH UTILITIES AND STRUCTURES IS NOT GUARANTEED. BEFORE STARTING WORK, DETERMINE THE EXACT LOCATION OF ALL SUCH UTILITIES AND STRUCTURES AND ASSUME ALL LIABILITY FOR DAMAGE TO THEM.

ELEVATIONS ARE GEODETIC AND ARE DERIVED FROM CITY OF OTTAWA VERTICAL BENCH MARK MONUMENT NO. 3606, INDEX NO. 118 HAVING AN ELEVATION 67.236 METERS.
SITE BENCHMARKS 1 AND 2 ARE LOCATED ON HYDRO POLE AND HYDRANT ON CARRUTHERS AS INDICATED ON PLAN.

REV	REVISION DESCRIPTION	DATE	BY	APPD
3	RE-ISSUED FOR SPA	05/03/25	AKJ	AKJ
2	RE-ISSUED FOR SPA	29/01/25	AGJ	AKJ
1	ISSUED FOR SPA	23/10/24	AGJ	AKJ

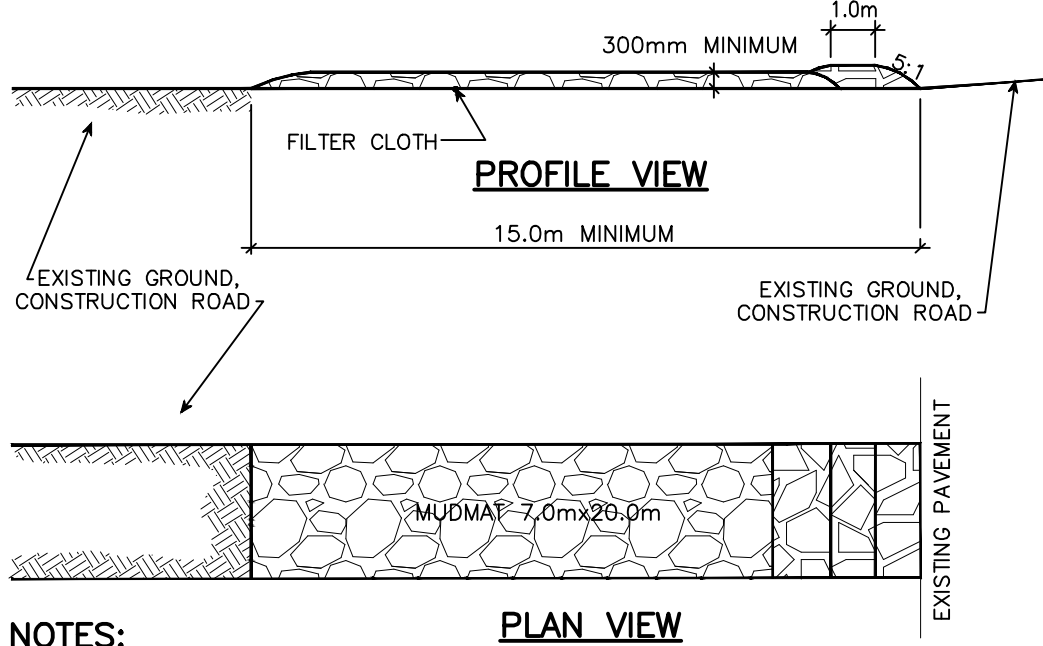
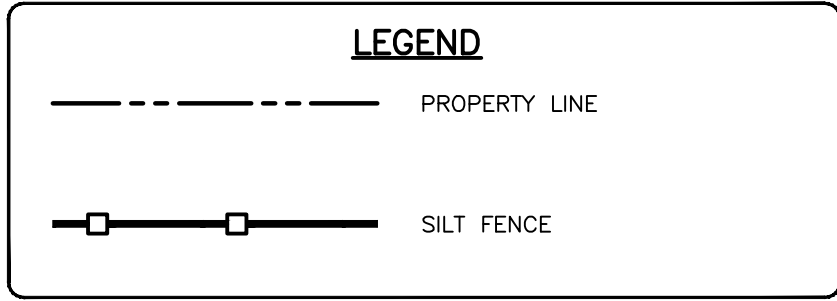
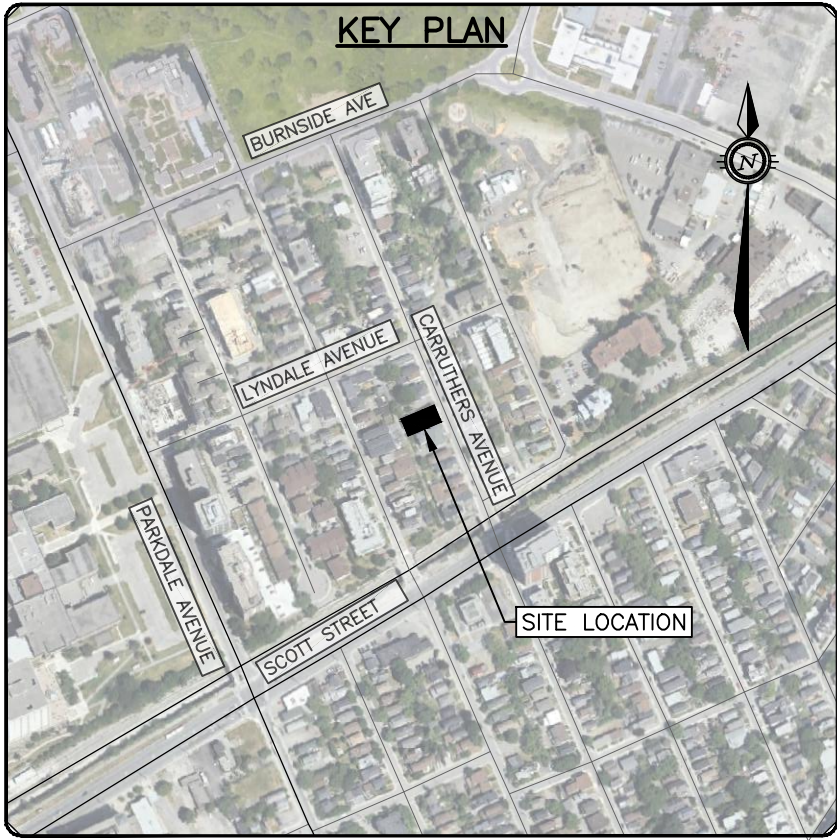


DESIGNED BY
A. K. JARIWALA
100562090
2025/03/05
PROVINCE OF ONTARIO

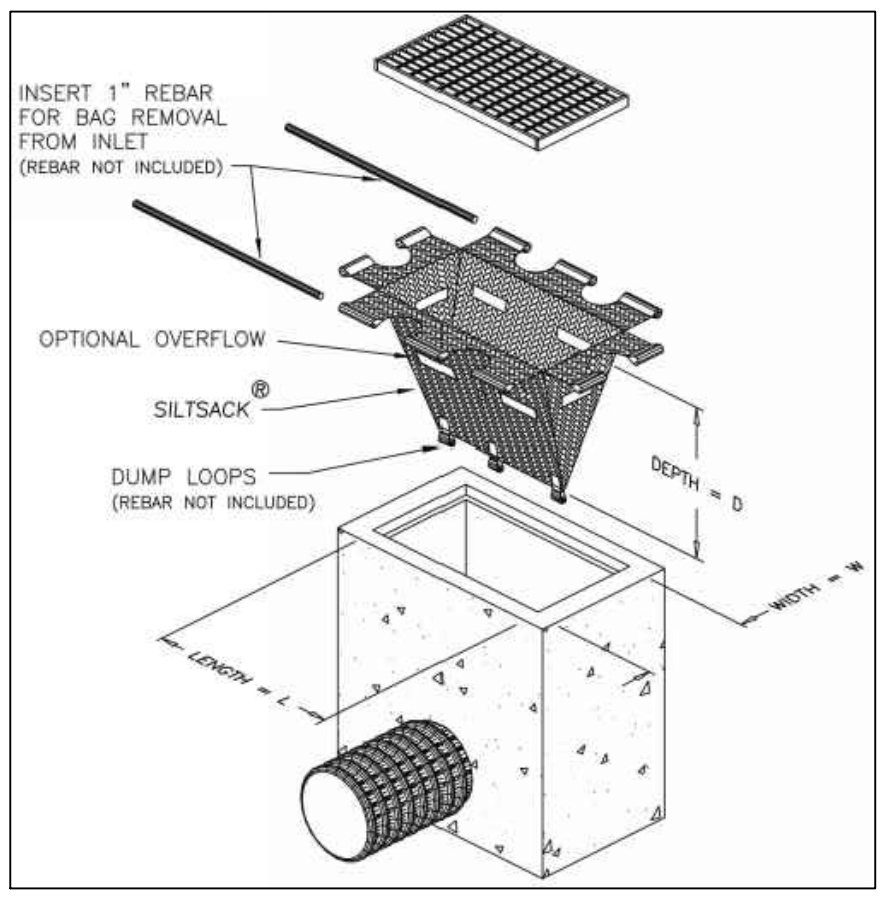
REVIEWED BY
A. K. JARIWALA
100562090
2025/03/05
PROVINCE OF ONTARIO

CLIENT
MR. MAJID AHANGARAN
MA PREVIOUS HOLDINGS
116 & 118 CARRUTHERS AVENUE
OTTAWA, ON. K2V 0L3
613.286.1020
exp Services Inc.
1-813-888-1899 | 1-613-225-7330
400-1000 Highway 100, Unit 100
Ottawa, ON K2B 8K6
Canada
www.exp.com
• BUILDINGS • EARTH & ENVIRONMENT • ENERGY •
• INDUSTRIAL • INFRASTRUCTURE • SUSTAINABILITY •

PROJECT
116 & 118 CARRUTHERS AVE
116 & 118 CARRUTHERS AVENUE
OTTAWA, ONTARIO.
PROJECT No.
OTT-24006545-AD
SURVEY
ACV
DATE
01/03/2024
DRAWING No.
C300
**EROSION AND SEDIMENT
CONTROL PLAN**



MUD MAT DETAIL
N.T.S.



**EROSION AND SEDIMENT
CONTROL PLAN**