



Stantec Consulting Ltd.
400 - 1331 Clyde Avenue
Ottawa ON
Tel. 613.722.4420
www.stantec.com

Copyright Reserved

The Contractor shall verify and be responsible for all dimensions. DO NOT scale the drawing - any errors or omissions shall be reported to Stantec without delay.
The Copyrights to all designs and drawings are the property of Stantec. Reproduction or use for any purpose other than that authorized by Stantec is forbidden.

Legend

	PROPOSED WATERMAIN
	PROPOSED VALVE AND VALVE BOX
	PROPOSED HYDRANT
	PROPOSED SANITARY SEWER
	PROPOSED STORM SEWER
	PROPOSED CATCH BASIN MANHOLE
	THERMAL INSULATION ABOVE STORM AS PER S35
	CIRCULAR OFFICE (SEE ICD TABLE)
	PROPOSED CATCH BASIN
	PROPOSED WATTS FD-530 (OR EQUIVALENT) TO BE CONNECTED TO INTERNAL PLUMBING
	EXISTING WATERMAIN
	EXISTING VALVE AND VALVE BOX
	EXISTING FIRE HYDRANT
	EXISTING SANITARY SEWER
	EXISTING STORM SEWER
	EXISTING CATCH BASIN
	PROPOSED WATER METER
	PROPOSED REMOTE WATER METER
	EXISTING C
	EXISTING BELL
	EXISTING TELLUS
	EXISTING TRAFFIC
	EXISTING HYDRO
	EXISTING STREETLIGHT
	PHASE LINES

- NOTES:
- FINAL SERVICE LATERAL SIZE, LOCATION AND ELEVATION TO BE CONFIRMED BY MECHANICAL CONSULTANT.
 - CONTRACTOR TO LOCATE EXISTING SERVICES AND ANY CONFLICTS WITH EXISTING SERVICES MUST BE REPORTED TO THE ENGINEER PRIOR TO CONTINUING WITH CONSTRUCTION.
 - SITE PLAN PREPARED BY DIAMOND SCHMITT ARCHITECT INC. DATED: MAY 28, 2025
 - TOPOGRAPHIC SURVEY SUPPLIED BY STANTEC CONSULTING LTD. DATED APRIL 11, 2022.
JOB BENCHMARK:
1. FIRE HYDRANT AT INTERSECTION OF REGINA AND LINCOLN HEIGHTS TOP OF SPINDLE ELEVATION 66.30.
2. FIRE HYDRANT INSIDE PROPERTY TOP OF SPINDLE ELEVATION 66.59.
 - ASBLT INFORMATION FROM J.G. KNOWLTON LTD. CONSULTING ENGINEERS. 4372PLAN, DWG# SP-2, DATED SEPT, 1981

5	ISSUED FOR CITY REVIEW	JP	PM	25.05.30
4	ISSUED FOR CITY REVIEW	JP	PM	25.04.14
3	ISSUED FOR CITY REVIEW	JP	PM	25.02.12
2	ISSUED FOR CITY REVIEW	JP	PM	24.11.28
1	ISSUED FOR CITY REVIEW	JP	PM	24.03.28

Revision	By	Appd.	YY.MM.DD
----------	----	-------	----------

File Name:	160401689-D8	JP	DT	JP	24.02.28
		Dwn.	Chkd.	Dsgn.	YY.MM.DD

Permit-Seal

Client/Project

WINDMILL DEVELOPMENT GROUP LTD.

2475 REGINA STREET

Ottawa, ON

Title

SITE SERVICING PLAN
INTERIM (PHASE 1)

Project No.
160401689

Drawing No.

Scale
0 3 9 15m
1:300

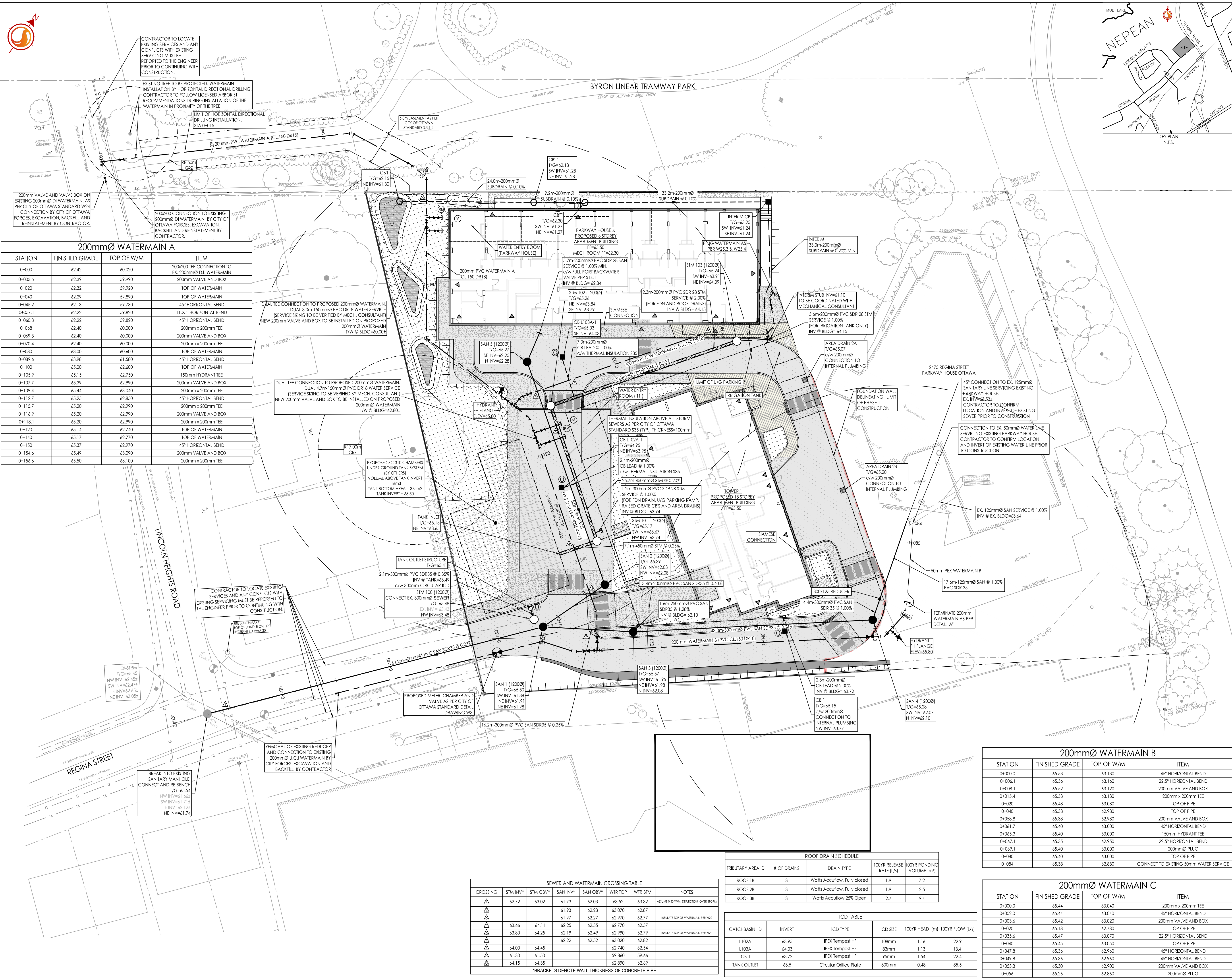
Sheet
Revision

SSP-1

3 of 12

5

DWG# 19267



SEWER AND WATERMAIN CROSSING TABLE							
CROSSING	STM INV*	STM OBV*	SAN INV*	SAN OBV*	WTR TOP	WTR BTM	NOTES
▲	62.72	63.02	61.73	62.03	63.52	63.32	ASSUME 0.30 W/M DIRECTION COVER SLOPE
▲			61.93	62.23	63.070	62.87	
▲			61.97	62.27	62.970	62.77	INSULATE TOP OF WATERMAIN PER W22
▲	63.66	64.11	62.25	62.55	62.770	62.57	
▲	63.80	64.25	62.19	62.49	62.990	62.79	INSULATE TOP OF WATERMAIN PER W22
▲			62.22	62.52	63.020	62.82	
▲	64.00	64.45			62.740	62.54	
▲	61.30	61.50			59.860	59.66	
▲	64.15	64.35			62.890	62.69	
*BRACKETS DENOTE WALL THICKNESS OF CONCRETE PIPE							

ROOF DRAIN SCHEDULE				
TRIBUTARY AREA ID	# OF DRAINS	DRAIN TYPE	100YR RELEASE RATE (L/s)	100YR PONDING VOLUME (m³)
ROOF 18	3	Watts Accuflow, Fully closed	1.9	7.2
ROOF 28	3	Watts Accuflow, Fully closed	1.9	2.5
ROOF 38	3	Watts Accuflow 25% Open	2.7	9.4

ICD TABLE					
CATCH-BASIN ID	INVERT	ICD TYPE	ICD SIZE	100YR HEAD (m)	100YR FLOW (L/s)
L102A	63.95	IPEx Tempest HF	108mm	1.16	22.9
L103A	64.03	IPEx Tempest HF	83mm	1.13	13.4
Cb-1	63.72	IPEx Tempest HF	95mm	1.54	22.4
TANK OUTLET	63.5	Circular Office Plate	300mm	0.48	85.5

200mmØ WATERMAIN B			
STATION	FINISHED GRADE	TOP OF W/M	ITEM
0+000.0	65.53	63.130	45° HORIZONTAL BEND
0+006.1	65.56	63.160	22.5° HORIZONTAL BEND
0+008.1	65.52	63.120	200mm VALVE AND BOX
0+015.4	65.53	63.130	200mm x 200mm TEE
0+020	65.48	63.080	TOP OF PIPE
0+040	65.38	62.980	TOP OF PIPE
0+058.8	65.38	62.980	200mm VALVE AND BOX
0+061.7	65.40	63.000	45° HORIZONTAL BEND
0+065.3	65.40	63.000	150mm HYDRANT TEE
0+067.1	65.35	62.950	22.5° HORIZONTAL BEND
0+069.1	65.40	63.000	200mmØ PLUG
0+080	65.40	63.000	TOP OF PIPE
0+084	65.38	62.880	CONNECT TO EXISTING 50mm WATER SERVICE

200mmØ WATERMAIN C			
STATION	FINISHED GRADE	TOP OF W/M	ITEM
0+000.0	65.44	63.040	200mm x 200mm TEE
0+002.0	65.44	63.040	45° HORIZONTAL BEND
0+003.6	65.42	63.020	200mm VALVE AND BOX
0+020	65.18	62.780	TOP OF PIPE
0+035.6	65.47	63.070	22.5° HORIZONTAL BEND
0+040	65.45	63.050	TOP OF PIPE
0+047.8	65.36	62.960	45° HORIZONTAL BEND
0+049.8	65.36	62.960	45° HORIZONTAL BEND
0+053.3	65.30	62.900	200mm VALVE AND BOX
0+056	65.26	62.860	200mmØ PLUG