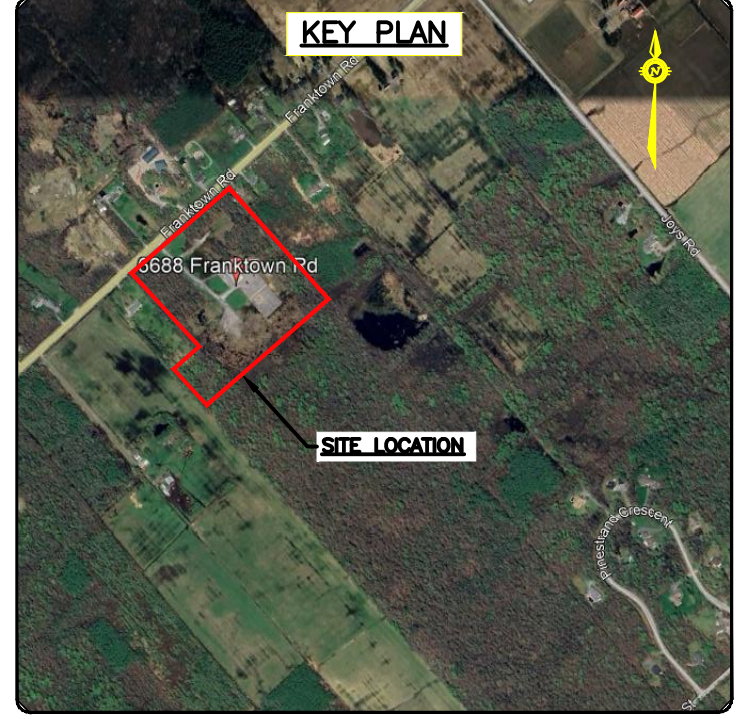


LEGEND

- PROPERTY LINE
- ONSITE OVERLAND FLOW ROUTE
- EXTERNAL OVERLAND FLOW ROUTE
- AREA NO. 1
AREA IN HECTARES: 0.184
RUNOFF COEFFICIENT: 0.79
- CATCHMENT AREA



JOB BENCH MARK JBM ▲
TEMPORARY SITE BENCHMARK – TOP OF SOUTH BOLT ON LAMP STANDARD, HAVING AN ELEVATION OF 101.36m.
ELEVATIONS ARE CANADA GEODETIC VERTICAL DATUM 28/78 DERIVED BY REAL TIME NETWORK GNSS OBSERVATIONS REFERENCED TO THE CANADA HT_2 GEOD MODEL.
COORDINATES DERIVED BY REAL TIME NETWORK GNSS OBSERVATIONS AND ARE REFERRED TO THE NAD83 CSRS (ORIGINAL) MTM ZONE 9 COORDINATE SYSTEM.
LOT 19 CONCESSION 3, PART 1 PLAN 4R-7040, P.I.N. 03933-1060(LT)
CSRS SURVEY MONUMENT: NOT APPLICABLE.

3	RE-ISSUED FOR SPA	06/06/25	AKJ	AKJ
2	RE-ISSUED FOR SPA	02/04/25	AKJ	AA
1	ISSUED FOR SPA	18/12/24	AGJ	AKJ
REV	REVISION DESCRIPTION	DATE	BY	APPD

grc architects
A PROVENCHER ROY COMPANY
47 Clarence Street, Suite 401
Ottawa, Ontario K1N 9K1
t: 613-241-8203 f: 613-241-41-80
info@grcarchitects.com
www.grcarchitects.com

consultant
exp.
exp Services Inc.
t: +1 613 688 1899 f: +1 613 225 7330
2000 Queen Anne Drive, Unit 100
Ottawa, ON K2B 8H6
Canada
www.exp.com
• BUILDINGS • EARTH & ENVIRONMENT • ENERGY •
• INDUSTRIAL • INFRASTRUCTURE • SUSTAINABILITY •

northpoint

professional stamp

project title
IBPS FO GUAN SHAN TEMPLE
6688 FRANKTOWN ROAD
OTTAWA, ONTARIO.

drawing title
**PRE-DEVELOPMENT
CATCHMENTS**

survey
BY MCINTOSH PERRY, DATED AUGUST 25, 2023

date	01/04/2024	job no.	OTT-22027645-AO
scale	1:750		
drawn	AKJ	drawing no.	C400
approved	AKJ		
plot date/time	6/6/2025 2:32:07 PM		

CAUTION
THE POSITION OF ALL POLE LINES, CONDUITS, WATERMANS, SEWERS AND OTHER UNDERGROUND AND OVERGROUND UTILITIES AND STRUCTURES IS NOT NECESSARILY SHOWN ON THE CONTRACT DRAWINGS, AND WHERE SHOWN, THE ACCURACY OF THE POSITION OF SUCH UTILITIES AND STRUCTURES IS NOT GUARANTEED. BEFORE STARTING WORK, DETERMINE THE EXACT LOCATION OF ALL SUCH UTILITIES AND STRUCTURES AND ASSUME ALL LIABILITY FOR DAMAGE TO THEM.