




SCALE 1 : 150



0 5 10 15 Metres

115 Walgreen Road, RR3, Carp, ON K0A 1L0
Tel: 613-836-2184 Fax: 613-836-3742
www.mcintoshperry.com

SMART LIVING PROPERTIES
226 ARGYLE AVENUE
OTTAWA, ON K2P 1B9

1:150	Project Number:	CCO-22-5087
By: FV		
By: CH	Drawing Number:	C101
By: FV		

#18783

1 : 150

CONDITION OR BETTER UNLESS OTHERWISE SPECIFIED

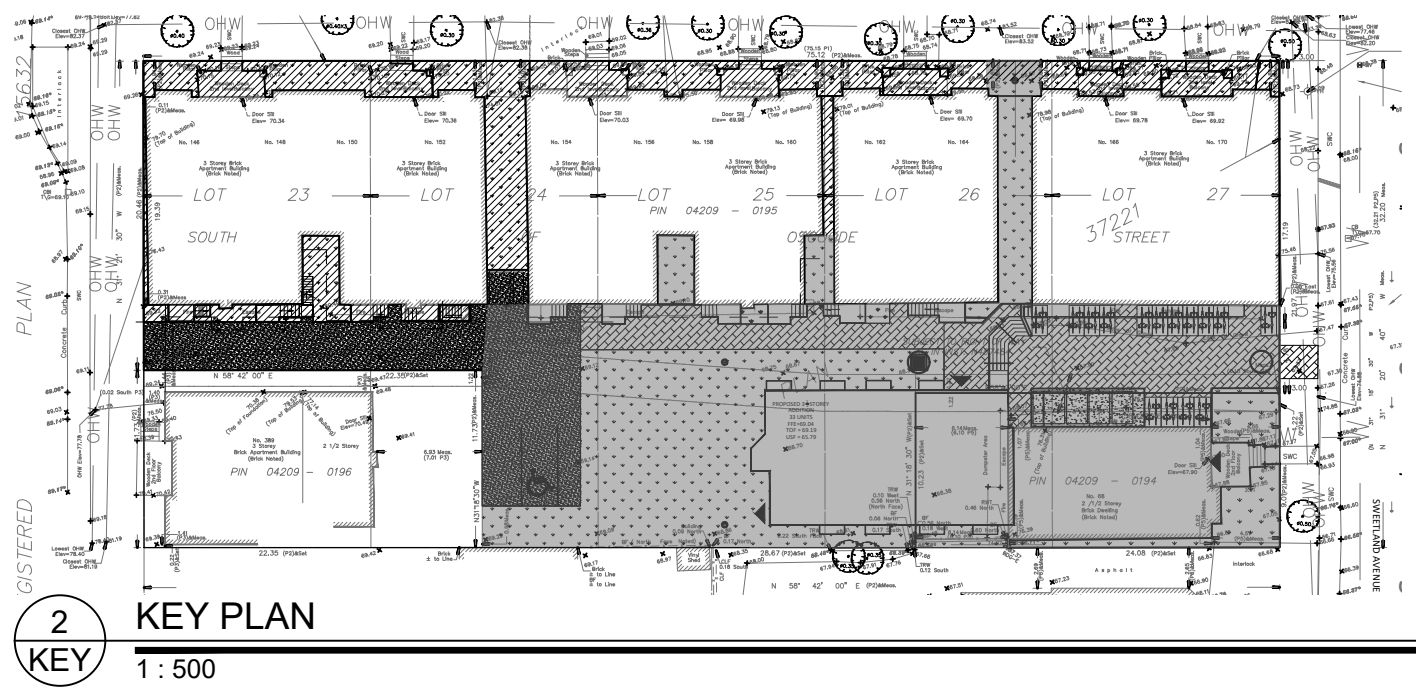
- ## EROSION AND SEDIMENT CONTROL

- SEDIMENT TO THE DOWNSTREAM SIDE OF THE CONTROL MEASURE. THE CONTROL MEASURE SHALL BE CONSTRUCTED AND MAINTAINED TO THE FOLLOWING:
- FOR LIGHT-DUTY SEDIMENT BARRIERS,
- 1.1.1 THE CONTROL MEASURE SHALL BE REMOVED ONCE IT REACHES THE LESSER OF THE FOLLOWING:
 - a. A DEPTH OF ONE HALF THE EFFECTIVE HEIGHT OF THE BASIN
 - b. A DEPTH OF 300 MM (INMEDIATELY UPSTREAM OF THE CONTROL MEASURE)
 - 1.1.2 FOR ALL CONTROL MEASURES, ACCUMULATED SEDIMENT SHALL BE REMOVED AS NECESSARY TO PREVENT THE CONTROL MEASURE FROM BECOMING A SEDIMENT TRAP. ACCUMULATED SEDIMENT SHALL BE REMOVED PRIOR TO THE REMOVAL OF THE CONTROL MEASURE. ACCUMULATED SEDIMENT SHALL BE REMOVED AND DISPOSED OF AS PER OPSS 180.
- ALL TEMPORARY EROSION AND SEDIMENT CONTROL MEASURES SHALL BE MONITORED TO ENSURE THEY ARE NOT CAUSING EROSION AND GRADING. THE USE OF WATER, CLAY, CEMENT, CHLORIDE SALTS/SOLUTION OR MAGNESIUM CHLORIDE SALTS/SOLUTION SHALL BE USED AS DUST SUPPLEMENTS AS PER OPSS 506. THIS IS TO LIMIT WASH LOSS OF MATERIAL FROM THE CONTROL MEASUREMENTS. WHERE THEY MAY BE WASHED INTO THE RECEIVING WATER BY THE NEXT RAINSTORM.
- ALL 'GREEN AREAS' TO BE TREATED WITH 150mm TOPSOIL AND SOD AS SOON AS FEASIBLE, AS PER OPSS 14.1.1.
- ALL DISTURBED AREAS ARE TO BE RESTORED TO ORIGINAL CONDITION OR BETTER UNLESS OTHERWISE SPECIFIED.
- STOCKPILED MATERIAL IS TO BE STORED AWAY FROM POTENTIAL RECEIVERS (E.G. STORM CATCHBASINS, MANHOLES), AND BE SURROUNDED BY EROSION CONTROL MEASURES WHERE MATERIAL IS LEFT IN PLACE FOR EXCESS 14 DAYS.
- IF REQUIRED, DRAINAGE/SETTLING BASINS SHALL BE CONSTRUCTED DOWNSTREAM OF THE CONTROL MEASURE. FLAT GRADE UPSTREAM OF OTHER EXISTING MITIGATION MEASURES, WATERCOURSES SHALL NOT BE DIVERTED, OR

BLOCKED, AND TEMPORARY WATERCOURSE CROSSINGS SHALL NOT BE CONSTRUCTED OR UTILIZED, UNLESS OTHERWISE SPECIFIED IN THE CONTRACT. IF CLOSURE OF ANY PERMANENT WATER PASSAGE IS NECESSARY, THE CONTRACTOR SHALL RELEASE ANY STRANDED FISH TO THE OPEN PORTION OF THE WATERCOURSE WITHOUT HARM.

12. ALL EROSION AND SEDIMENT CONTROL MEASURES SHALL CONFORM TO OPSS 577
13. WHERE DEWATERING IS REQUIRED, THE DISCHARGED WATER SHALL BE CONTROLLED IN ACCORDANCE WITH OPSS 518.
14. ALL SETTLING/FILTRATION BASINS SHALL BE EQUIPPED WITH TERRAFIX 270R GEOTEXTILE (OR APPROVED EQUIVALENT) AND SHALL BE CLEANED AND REPLACED AS REQUIRED.

APPROVED
By Andrew McCreight at 8:12 am, Jun 12, 2025



KEY PLAN

1 : 500

LEGEND

PROPOSED LANDSCAPING WORKS MATCH EXISTING ELEVATIONS

PROPOSED GRADING PER
 PLAN 0101