

NOTES: REMOVALS AND DEMOLITION

- PRE-REMOVAL, THE CONTRACTOR MUST VISIT THE PREMISES IN ORDER TO BE FULLY AWARE OF EXISTING CONDITIONS ON SITE, INCLUDING ALL ELEMENTS TO BE REMOVED AND DEMOLISHED. NO CLAIM WILL BE ACCEPTED DUE TO A POOR EVALUATION OF THE WORK TO BE COMPLETED.
- THE CONTRACTOR IS RESPONSIBLE FOR LOCATING AND THE REQUEST FOR INTERRUPTION OF PUBLIC UTILITY SERVICES, SUCH AS GAS, TELEPHONE, POWER, CABLE, SEWERS, WATERMAIN, ETC. BEFORE PROCEEDING WITH WORK, COORDINATE WITH ALL APPLICABLE UTILITY COMPANIES.
- FIRE HYDRANTS TO BE TAGGED AND BAGGED AND/OR PROTECTED AS INDICATED ON DRAWING.
- CURB, ASPHALT, SIDEWALK, AND GRANULAR BASE TO BE EXCAVATED WITHIN LIMITS OF DEMOLITION REMOVAL. THE CONTRACTOR MUST CARRY OUT NECESSARY SAW CUTS.
- SEWER/WATERMAIN PIPES TO BE ABANDONED MUST BE CUT, FILL WITH UNSHRINKABLE CONCRETE CONFORMING TO OPSS 1359, AND CAPPED.
- REMOVE AND DISPOSE SEWERS AS INDICATED. PLUG ANY SERVICE LATERALS TO BE ABANDONED.
- THE CONTRACTOR MUST ENTIRELY REMOVE THE DEMOLITION WRECKAGE FROM THE CONSTRUCTION SITE OFFSITE IN ACCORDANCE WITH THE REQUIREMENTS OF THE MINISTRY OF ENVIRONMENT AND CLIMATE CHANGE (MOECC).
 - THE CONTRACTOR MUST DISCARD RECYCLABLE DEMOLITION MATERIALS IN COLLABORATION WITH A REGIONAL RECYCLING COMPANY.
 - ALL OTHER DEMOLITION MATERIALS MUST BE DISPOSED OFF-SITE AT AUTHORIZED LICENSED LANDFILLS AND IN CONFORMITY WITH THE APPLICABLE LAWS AND REGULATIONS. THE CONTRACTOR MUST BE ABLE TO PROVIDE, UPON REQUEST, COPIES OF THE DISPOSAL TICKETS TO THE OWNER'S REPRESENTATIVE.
- SURFACES AND WORKS LOCATED OUTSIDE OF THE CONSTRUCTION WORK LIMIT MUST BE REINSTATED AS THEY WERE BEFORE BEGINNING OF WORK. CONTRACTOR IS RESPONSIBLE TO MAKE GOOD ON ANY DAMAGES TO EXISTING CURB AND ASPHALT NOT SCHEDULED FOR REMOVAL.
- ALL MATERIALS, PRODUCTS AND OTHERS COMING FROM THE DEMOLITION BELONG TO THE CONTRACTOR, UNLESS SPECIFIED OTHERWISE.
- THE CONTRACTOR MUST COMPLETE ALL REMOVALS AS SHOWN ON THE DRAWINGS AND AS REQUIRED TO MAKE THE WORK COMPLETE.
- THE CONTRACTOR MUST PROTECT AND MAINTAIN IN SERVICE THE EXISTING WORKS WHICH MUST REMAIN IN PLACE. IF THEY ARE DAMAGED, THE CONTRACTOR MUST IMMEDIATELY MAKE THE REPLACEMENTS AND NECESSARY REPAIRS TO THE SATISFACTION OF THE OWNER'S REPRESENTATIVE AND WITHOUT ADDITIONAL EXPENSE TO THE OWNER.
- THE CONTRACTOR MUST NOT PERFORM ANY TREE CUTTING DURING THE CORE MIGRATORY BIRDS NESTING PERIOD, WHICH IS APRIL 15 TO AUGUST 15.

EROSION AND SEDIMENT CONTROL MEASURES:

- CONTRACTOR IS RESPONSIBLE FOR ALL INSTALLATION, MONITORING, REPAIR AND REMOVAL OF ALL EROSION AND SEDIMENT CONTROL FEATURES. THE CONTRACTOR SHALL IMPLEMENT BEST MANAGEMENT PRACTICES, TO PROVIDE FOR PROTECTION OF THE AREA DRAINAGE SYSTEM AND THE RECEIVING WATERCOURSE, DURING CONSTRUCTION ACTIVITIES. THE CONTRACTOR ACKNOWLEDGES THAT FAILURE TO IMPLEMENT APPROPRIATE EROSION AND SEDIMENT CONTROL MEASURE MAY BE SUBJECT TO PENALTIES IMPOSED BY ANY APPLICABLE REGULATORY AGENCY.
- SEDIMENT AND EROSION CONTROL PLAN OBJECTIVES:
 - PREVENT SOIL EROSION. THIS CAN RESULT FROM STREAMING RAIN WATER OR WIND EROSION DURING CONSTRUCTION.
 - PREVENT SEDIMENT DEPOSITS IN THE SEWER PIPES AND NEARBY COLLECTING STREAMS (AS APPLICABLE).
 - PREVENT AIR POLLUTION FROM PARTICULATE MATTER AND DUST.

1. PRIOR TO START OF CONSTRUCTION:

- PRIOR TO THE REMOVAL OF ANY VEGETATIVE COVER, MOVING OF SOIL AND CONSTRUCTION:
- INSTALL SILT FENCE (AS PER OPSD 219.110) ALONG DITCHES IMMEDIATELY DOWNSTREAM FROM AREAS TO BE DISTURBED (SEE PLAN FOR LOCATION).
 - INSTALL FILTER CLOTH ON DOWNSTREAM MANHOLE COVERS.
 - INSTALL SILTSACK FILTERS IN ALL CONCRETE CATCH BASINS STRUCTURES.
 - INSPECT MEASURES IMMEDIATELY AFTER INSTALLATION.
 - THE CONTRACTOR MUST SET UP THE MEASURES INDICATED ON THE PLAN, INSPECT THEM FREQUENTLY AND CLEAN AND REPAIR OR REPLACE THE DETERIORATED STRUCTURES. AT THE END OF THE CONSTRUCTION PERIOD, THE CONTRACTOR IS RESPONSIBLE FOR REMOVAL OF THE TEMPORARY STRUCTURES AND RECONSTRUCTING THE AFFECTED AREAS.

2. DURING CONSTRUCTION:

- SEDIMENT AND EROSION CONTROL MEASURES TO BE CONSTRUCTED AS PER OPSD 805.
- WHEN SEDIMENT AND EROSION CONTROL MEASURES MUST BE REMOVED TO COMPLETE A PORTION OF THE WORK, THE SAME MEASURES MUST BE REINSTATED

- UPON THE WORK'S COMPLETION.
- WORK TO BE DONE IN THE VICINITY OF MAJOR WATERWAYS TO BE CARRIED OUT FROM JULY AND SEPTEMBER ONLY.
 - MINIMIZE THE EXTENT OF DISTURBED AREAS AND THE DURATION OF EXPOSURE.
 - PROTECT DISTURBED AREAS FROM RUNOFF.
 - PROVIDE TEMPORARY COVER SUCH AS SEEDING OR MULCHING IF DISTURBED AREA WILL NOT BE REHABILITATED SHORTLY.
 - INSPECT STRAW BALE FLOW CHECK DAMS, SILT FENCES, SILT SACKS, AND CATCH BASIN SUMPS REGULARLY AND AFTER EVERY MAJOR STORM EVENT. CLEAN AND REPAIR WHEN NECESSARY.
 - PLAN TO BE REVIEWED AND REVISED AS REQUIRED DURING CONSTRUCTION.
 - EROSION CONTROL FENCING TO BE ALSO INSTALLED AROUND THE BASE OF ALL STOCKPILES.
 - DO NOT LOCATE TOPSOIL PILES AND EXCAVATION MATERIAL CLOSER THAN 2.5m FROM ANY PAVED SURFACE, OR ONE WHICH IS TO BE PAVED BEFORE THE PILE IS REMOVED. ALL TOPSOIL PILES ARE TO BE SEEDDED IF THEY ARE TO REMAIN ON SITE LONG ENOUGH FOR SEEDS TO GROW (LONGER THAN 30 DAYS). WHEN STORING SOIL ON SITE IN PILES THE CONTRACTOR MUST COVER EACH PILE WITH TARP, STRAW OR A GEOTEXTILE FABRIC TO AVOID FINE PARTICLE TRANSPORT BY WIND AND/OR STREAMING RAIN WATER.
 - CONTROL WIND-BLOWN DUST OFF SITE TO ACCEPTABLE LEVELS BY SEEDING TOPSOIL PILES AND OTHER AREAS TEMPORARILY (PROVIDE WATERING AS REQUIRED). FOR DUST CONTROL, CONTRACTOR TO APPLY CALCIUM CHLORIDE (TYPE I - OPSS 2501 AND CAN/CSSB-15-1) AND WATER WITH EQUIPMENT APPROVED BY THE OWNER'S REPRESENTATIVE AT RATE IN ACCORDANCE TO OPSS 506 WHEN DIRECTED BY OWNER'S REPRESENTATIVE.
 - ALL EROSION CONTROL STRUCTURE TO REMAIN IN PLACE UNTIL ALL DISTURBED GROUND SURFACES HAVE BEEN STABILIZED EITHER BY PAVING OR RESTORATION OF VEGETATIVE GROUND COVER. SEDIMENT CAPTURE SILT SACKS MUST BE MAINTAINED AND CANNOT BE REMOVED UNTIL ALL LANDSCAPING AREAS ARE COMPLETED.
 - NO ALTERNATE METHODS OF EROSION PROTECTION SHALL BE PERMITTED UNLESS APPROVES BY THIS CONSULTING ENGINEER AND THE TOWN DEPARTMENT OF PUBLIC WORKS.
 - CONTRACTOR RESPONSIBLE FOR MUNICIPAL ROADWAY AND SIDEWALK TO BE CLEANED OF ALL SEDIMENT FROM VEHICULAR TRAVELING ETC. AT THE END OF EACH WORK DAY.
 - DURING WET CONDITIONS, TIRES OF ALL VEHICLES/EQUIPMENT LEAVING THE SITE ARE TO BE SCRAPED.

- ANY MUD/MATERIAL TRACKED ONTO THE ROAD SHALL BE REMOVED IMMEDIATELY BY HAND OR RUBBER TIRE LOADER.
- TAKE ALL NECESSARY STEPS TO PREVENT BUILDING MATERIAL, CONSTRUCTION DEBRIS OR WASTE BEING SPILLED OR TRACKED ONTO ADJUTING PROPERTIES OR PUBLIC STREETS DURING CONSTRUCTION AND PROCEED IMMEDIATELY TO CLEAN UP ANY AREAS SO AFFECTED.
- PROVIDE GRAVEL ENTRANCE WHEREVER EQUIPMENT LEAVES THE SITE TO PROVIDE MUD TRACKING ONTO PAVED SURFACES. GRAVEL BED SHALL BE A MINIMUM OF 10m LONG, 4m WIDE, AND 0.15m DEEP AND SHALL CONSIST OF COARSE MATERIAL. MAINTAIN GRAVEL ENTRANCE IN CLEAN CONDITION.

3. AFTER CONSTRUCTION:

- PROVIDE PERMANENT COVER CONSISTING OF TOPSOIL AND SEED TO DISTURBED AREAS.
- ALL SEDIMENT AND EROSION CONTROL MEASURES TO BE REMOVED BY THE CONTRACTOR FOLLOWING THE COMPLETION OF WORK AND AFTER DISTURBED AREAS HAVE BEEN REHABILITATED AND STABILIZED. THIS INCLUDES REMOVE STRAW BALE FLOW CHECK DAMS, SILT FENCES AND FILTER CLOTHS ON CATCH BASINS AND MANHOLE COVERS.
- INSPECT AND CLEAN CATCH BASIN SUMPS AND STORM SEWERS.

LEGEND:

- EXISTING PROPERTY LINE
- STRUCTURE TO BE ADJUSTED
- STRUCTURE TO BE REMOVED
- METHANE MONITORING WELL TO BE ADJUSTED
- SILT SACK PER DETAIL D1
- EXISTING ASPHALT REMOVAL
- EXISTING CONCRETE SIDEWALK REMOVAL
- CLEARING & GRUBBING AREA/ LANDSCAPE REMOVAL
- EXISTING CURB REMOVAL
- PROPOSED SILT FENCE PER OPSD 219.110



NOT TO SCALE

Surveyor



ANNIS, O'SULLIVAN, VOLLEBECK LTD.
14 CONCOURSE GATE, SUITE 500
NEPEAN, ONTARIO, K2E 7S8

TOPOGRAPHIC INFORMATION & BENCHMARK
SURVEY COMPLETED BY ANNIS, O'SULLIVAN, VOLLEBECK LTD. ON MAY 28, 2024. ELEVATIONS SHOWN ARE GEODETIC AND ARE REFERRED TO THE CGVD28 GEODETIC DATUM, DERIVED FROM CONTROL MONUMENT NO. 019680274 HAVING AN ELEVATION OF 66.322m.

BOUNDARY INFORMATION WAS COMPILED FROM PLANS 4R-19213, 4R-35573 AND 4R-36051

JOB BENCHMARK

FIRE HYDRANT TOP OF SPINDLE ALONG TRANSITWAY
ELEVATION = 63.52m

Client



THE OTTAWA HOSPITAL
1053 CARLING AVENUE
OTTAWA, ONTARIO, K1Y 4E9
(613) 722-7000



1223 MICHAEL STREET, SUITE 100
GLOUCESTER, ONTARIO, K1J 7T2



4	RE-ISSUED FOR SPA	BV	2025/05/15
3	RE-ISSUED FOR SPA	BV	2025/03/13
2	RE-ISSUED FOR SPA	BV	2025/01/17
1	ISSUED FOR SPA	BV	2024/11/08

No.	Revision	By	Date (yy/mm/dd)

Scale
5m 0 5 10m
SCALE: 1:250

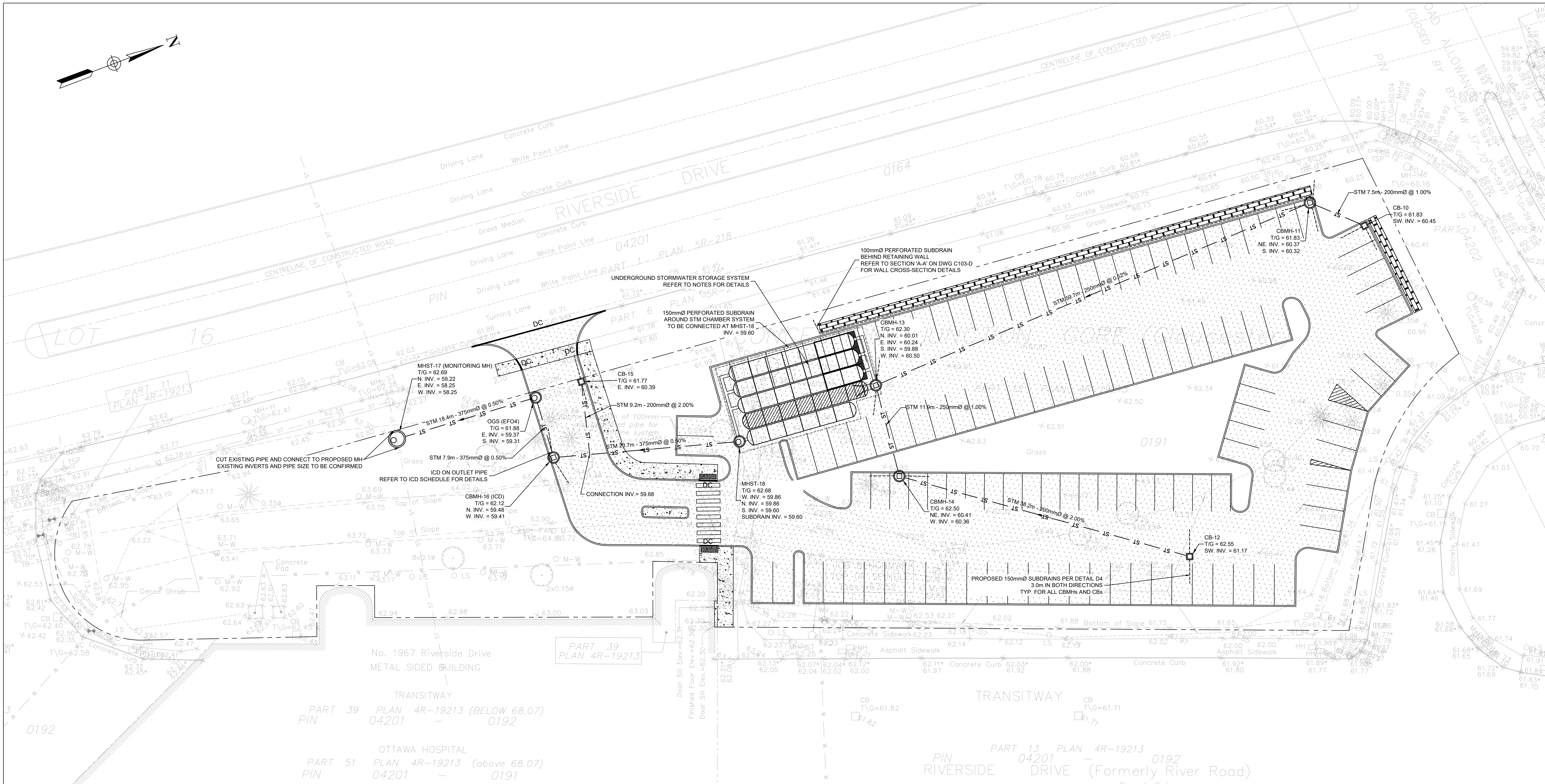
Project Title

**THE OTTAWA HOSPITAL
RIVERSIDE CAMPUS
PARKING LOT**

Drawing Title
**PARKING LOT D
REMOVALS PLAN**

Designed by:	BV	Datum	CGVD28
Drawn by:	BV		
Approved by:	MT		
Project No.	479008	Drawing No.	C101-D

#10228 D07-12-25-006



NOTES: SEWER

- CONTRACTOR TO CONFIRM ELEVATION OF EXISTING STORM AND SANITARY SEWERS AT PROPOSED CONNECTION POINTS AND REPORT ANY DISCREPANCIES TO THE ENGINEER BEFORE COMMENCING ANY WORK
- ALL WORK SHALL BE PERFORMED, AS APPLICABLE IN ACCORDANCE WITH OPSS 407, 408 AND 410.
- ALL STORM AND SANITARY SEWERS INSTALLED BELOW THE GROUNDWATER TABLE ELEVATION SHALL BE WATERTIGHT AND INFILTRATION TESTS SHALL BE CARRIED OUT ACCORDING TO OPSS MUNI 410.
- PIPE MATERIAL TO BE PVC SDR-35 AND CONFORMING TO OPSS 1841, UNLESS INDICATED OTHERWISE. PVC SEWERS TO BE INSTALLED PER OPSD 802.010 (MODIFIED), BEDDING AND COVER MATERIALS TO BE OPSS 1010 GRANULAR 'A' CRUSHER-RUN LIMESTONE BEDDING COMPACTED TO 95% SPMD.
- ALL SEWERS WITH LESS THAN 1.5 METERS OF COVER ARE SUBJECTED TO INSULATION PER CITY OF OTTAWA STD DETAIL, S35.
- PIPE BACKFILL MATERIAL TO BE APPROVED NATIVE MATERIAL OR SELECT SUBGRADE MATERIAL IN CONFORMANCE WITH OPSS 212.
- ALL MAINTENANCE HOLES AND CATCH BASIN MAINTENANCE HOLES TO BE 1200mmØ AS PER OPSD 701.010, UNLESS INDICATED OTHERWISE. MAINTENANCE HOLES AND CATCH BASIN MAINTENANCE HOLES TO BE INSTALLED PER OPSS 407.
- ALL CATCH BASINS TO BE 600x600mm AS PER OPSD 705.010, UNLESS INDICATED OTHERWISE. CATCH BASINS TO BE INSTALLED PER OPSS 407.
- EXCAVATING, BACKFILLING, AND COMPACTING REQUIRED FOR MAINTENANCE HOLES, CATCH BASIN MAINTENANCE HOLES, AND CATCH BASINS TO BE COMPLETED AS PER OPSS 402. THEY ARE TO BE BACKFILLED WITH OPSS GRANULAR 'B' COMPACTED TO 98% SPMD. JOINTS BETWEEN SECTIONS TO BE WRAPPED WITH NON-WOVEN GEOTEXTILE.
- FOR SANITARY STRUCTURES: CAST IRON MAINTENANCE HOLE COVER AS PER OPSD 401.010 TYPE 'A'.
- FOR STORM STRUCTURES: CAST IRON CATCH BASIN MAINTENANCE HOLE COVER AS PER OPSD 401.010 TYPE 'B' AND CAST IRON CATCH BASIN COVER AS PER OPSD 400.020.
- SANITARY MAINTENANCE HOLES REQUIRE BENCHING AS PER OPSD 701.021.
- THE CONTRACTOR IS RESPONSIBLE FOR MAKING OR ARRANGING ALL CONNECTIONS TO THE EXISTING SEWERS AS PER MUNICIPAL REQUIREMENTS. PRIOR TO CONNECTION, THE CONTRACTOR MUST PROVIDE, TO THE CONSULTANT / ENGINEER AND THE CITY FOR APPROVAL, ALL TEST RESULTS PERFORMED ON THE INTERNAL SERVICES.
- ADVISE THE CITY PUBLIC WORKS AT LEAST 72 HOURS IN ADVANCE BEFORE ANY CONNECTION TO THE CITY SERVICES. CO-ORDINATE WITH CITY AS REQUIRED.
- TERMINATE AND PLUG ALL SERVICE CONNECTIONS AT 1.0 m FROM EDGE OF THE BUILDING.
- ALL SEWERS TO BE C.C.T.V. INSPECTED BY THE CONTRACTOR AS PER OPSS 409. TWO COPIES OF THE INSPECTION REPORT MUST BE PROVIDED TO THE CONSULTANT AND THE C.C.T.V. INSPECTION IN DVD FORMAT ONLY.
- SUBDRAIN KNOCKOUT (KO) WILL BE PRE-MANUFACTURED WITH CATCH BASINS AND MAINTENANCE HOLES.
- THE OGS UNIT SHALL BE STORMCEPTOR EFO4 OR APPROVED EQUIVALENT. OGS WILL REQUIRE PERIODIC MAINTENANCE AND CLEANING AS PER MANUFACTURERS SPECIFICATIONS - TYPICAL CLEANING INTERVAL IS ONCE A YEAR.

NOTES: UNDERGROUND STORMWATER STORAGE

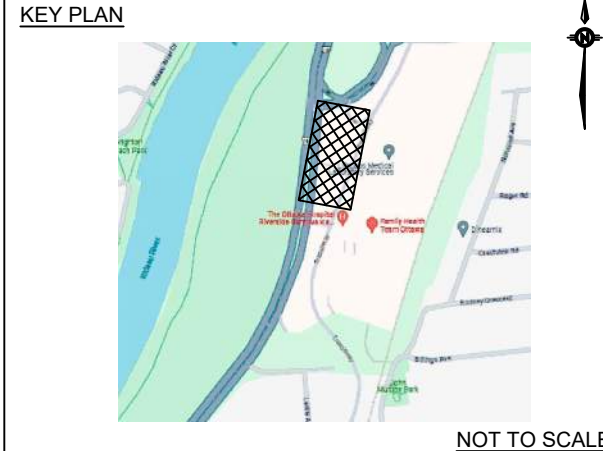
- UNDERGROUND STORMWATER STORAGE SYSTEM CHAMBER TYPE OR EQUIVALENT
- CHAMBER TYPE: STORMTECH MC-3500 OR APPROVED EQUIVALENT
- STORAGE PROVIDED: 205.9m³ (INCLUDING PERIMETER STONE)
- BOTTOM OF FOUNDATION PAD ELEVATION & PERFORATED SUBDRAIN INVERT: 59.60m.
- BOTTOM OF CHAMBER ELEVATION: 59.83m.
- TOP OF CHAMBER ELEVATION: 60.97m.
- TOP OF SYSTEM (PERIMETER STONE) = 61.28m.
- TOP OF CHAMBER TO BE A MINIMUM OF 450mm BELOW PARKING LOT PAVEMENT AND MAXIMUM 2.4m.
- SYSTEM TO BE COMPLETELY WRAPPED WITH GEOTEXTILE.
- SHOP DRAWINGS FOR UNDERGROUND STORAGE SYSTEM SHALL BE PROVIDED.
- INLET STRUCTURE (CBMH-13) & OUTLET STRUCTURE (MHST-18) TO BE OPSD 701.010 CONCRETE MAINTENANCE HOLE

ICD SCHEDULE						
ICD ID	LOCATION	ORIFICE INVERT (m)	FLOW 5y/100y (L/s)	HEAD 5y/100y (m)	EQUIVALENT DIAMETER (mm)	MODEL*
1	CBMH-16	59.41	4.8/7.4	0.80/1.85	50	JOHN MEUNIER HYDROVEX 75VHV-1

* ICD SHOP DRAWINGS SHALL BE SUBMITTED TO PARSONS BEFORE COMMENCING ANY WORK

LEGEND:

- EXISTING PROPERTY LINE
- EXISTING WATERMAIN
- EXISTING WATER VALVE
- EXISTING SANITARY SEWER AND MAINTENANCE HOLE
- EXISTING STORM SEWER AND MAINTENANCE HOLE
- EXISTING CATCH BASIN
- EXISTING METHANE MONITORING WELL
- PROPOSED STORM SEWER AND MAINTENANCE HOLE
- PROPOSED CATCH BASIN MAINTENANCE HOLE WITH 3.0m SUBDRAINS IN BOTH DIRECTIONS
- PROPOSED CATCH BASIN WITH 3.0m SUBDRAINS IN BOTH DIRECTIONS



NOT TO SCALE

Surveyor



ANNIS, O'SULLIVAN, VOLLEBEK LTD.
14 CONCOURSE GATE, SUITE 500
NEPEAN, ONTARIO, K2E 7S6

TOPOGRAPHIC INFORMATION & BENCHMARK

SURVEY COMPLETED BY ANNIS, O'SULLIVAN, VOLLEBEK LTD. ON MAY 28, 2024. ELEVATIONS SHOWN ARE GEODETIC AND ARE REFERRED TO THE CGVD28 GEODETIC DATUM, DERIVED FROM CONTROL MONUMENT NO. 019680274 HAVING AN ELEVATION OF 66.322m.

BOUNDARY INFORMATION WAS COMPILED FROM PLANS 4R-19213, 4R-35573 AND 4R-36051

JOB BENCHMARK

FIRE HYDRANT TOP OF SPINDLE ALONG TRANSITWAY
ELEVATION = 63.52m

Client



THE OTTAWA HOSPITAL
1053 CARLING AVENUE,
OTTAWA, ONTARIO, K1Y 4E9
(613) 722-7000



4	RE-ISSUED FOR SPA	BV	2025/05/15
3	RE-ISSUED FOR SPA	BV	2025/03/13
2	RE-ISSUED FOR SPA	BV	2025/01/17
1	ISSUED FOR SPA	BV	2024/11/08

No.	Revision	By	Date (yy/mm/dd)
Scale			
1m 0 5 10m			
SCALE: 1:250			

Project Title

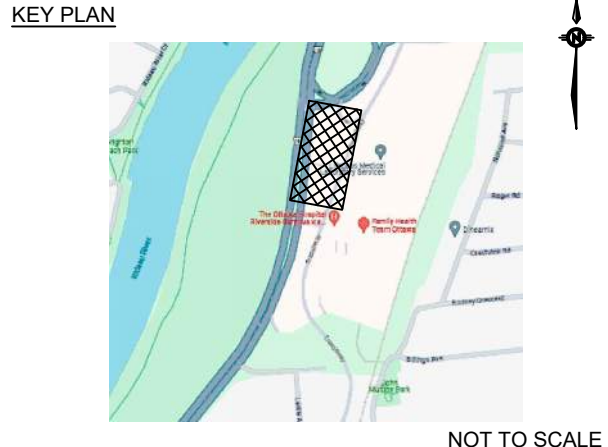
THE OTTAWA HOSPITAL
RIVERSIDE CAMPUS
PARKING LOT

Drawing Title

PARKING LOT D
SITE SERVICING PLAN

Designed by:	BV	Datum	CGVD28
Drawn by:	BV		
Approved by:	MT		
Project No.	479008	Drawing No.	C102-D

#19228 D07-12-25-0006



JOB BENCHMARK

FIRE HYDRANT TOP OF SPINDLE ALONG TRANSITWAY
ELEVATION = 63.52m

Client

 The Ottawa Hospital | L'Hôpital

 University of North Carolina

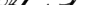
THE OTTAWA HOSPITAL
1053 CARLING AVENUE,

(613) 722-7000



1223 MICHAEL STREET, SUITE 100
GLOUCESTER, ONTARIO, K1J 7T2

--	--



LIG B. VILLENEUVE
100553987

2025-05-23
PROVINCIAL SECRETARIO

4	RE-ISSUED FOR SPA	BV	2025/05/15
---	-------------------	----	------------

3	RE-ISSUED FOR SPA	BV	2023/03/13
2	RE-ISSUED FOR SPA	BV	2025/01/17

No.	Revision	By	Date (yy/mm/dd)
-----	----------	----	-----------------

Scale

Project Title _____

THE OTTAWA HOSPITAL

RIVERSIDE CAMPUS

PARKING LOT

Drawing Title

PARKING LOT D GRADING PLAN

Drawn by: BV

Approved by: MT	
-----------------	---

Project No.	Drawing No.
479008	C103-D

#19228	D07-12-25-0006
--------	----------------

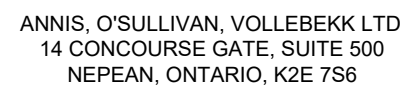
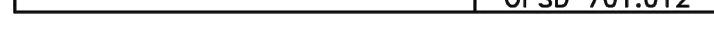
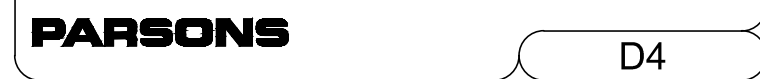
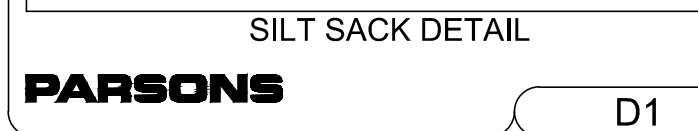
ISSUED FOR SPA		BV	2025/05/15
ISSUED FOR SPA		BV	2025/03/13
ISSUED FOR SPA		BV	2025/01/17
ISSUED FOR SPA		BV	2024/11/08
Revision	By	Date (yy/mm/dd)	

0 5 10m

OTTAWA HOSPITAL EAST SIDE CAMPUS PARKING LOT

PARKING LOT D GRADING PLAN

BV	Dated
BV	
MT	



TOPOGRAPHIC INFORMATION & BENCHMARK

SURVEY COMPLETED BY ANNIS, O'SULLIVAN, VOLLEBEKK LTD. ON MAY 28, 2024. ELEVATIONS SHOWN ARE GEODETIC AND ARE REFERRED TO THE CGVD28 GEODETIC DATUM, DERIVED FROM CONTROL MONUMENT NO. 019880274 HAVING AN ELEVATION OF 66.322m.

BOUNDARY INFORMATION WAS COMPILED FROM PLANS 4R-19213, 4R-35573 AND 4R-36051

JOB BENCHMARK

FIRE HYDRANT TOP OF SPINDLE ALONG TRANSITWAY
ELEVATION = 63.52m

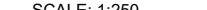


THE OTTAWA HOSPITAL
1053 CARLING AVENUE,
OTTAWA, ONTARIO, K1Y 4E9
(613) 722-7000



4	RE-ISSUED FOR SPA	BV	2025/05/15
3	RE-ISSUED FOR SPA	BV	2025/03/13
2	RE-ISSUED FOR SPA	BV	2025/01/17
1	ISSUED FOR SPA	BV	2024/11/08
No.	Revision	By	Date (yy/mm/dd)

Scale



5m 0 5 10m

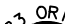
SCALE: 1:250

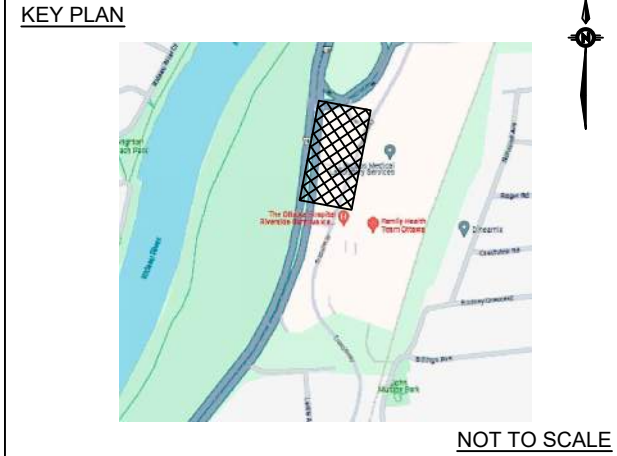
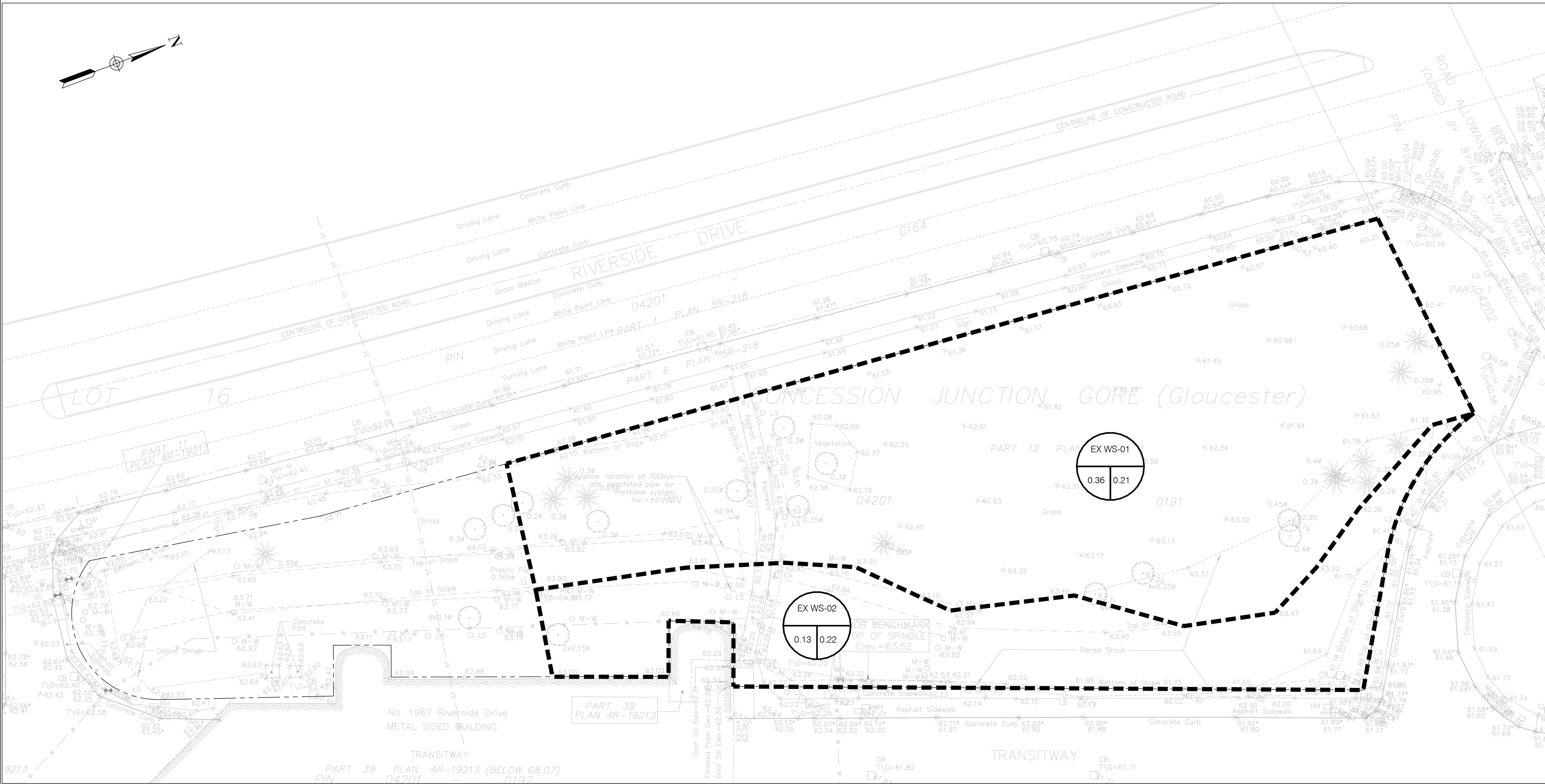
Project Title

THE OTTAWA HOSPITAL
RIVERSIDE CAMPUS
PARKING LOT

Drawing Title

PARKING LOT D DETAILS

Designed by: BV	
Drawn by: BV	
Approved by: MT	
Project No. 479008	Drawing No. C104-D



Surveyor



ANNIS, O'SULLIVAN, VOLLEBEK LTD.
14 CONCOURSE GATE, SUITE 500
NEPEAN, ONTARIO, K2E 7S6

TOPOGRAPHIC INFORMATION & BENCHMARK
SURVEY COMPLETED BY ANNIS, O'SULLIVAN, VOLLEBEK LTD. ON MAY 28, 2024. ELEVATIONS SHOWN ARE GEODETTIC AND ARE REFERRED TO THE CGVD28 GEODETTIC DATUM, DERIVED FROM CONTROL MONUMENT NO. 019680274 HAVING AN ELEVATION OF 66.322m.

BOUNDARY INFORMATION WAS COMPILED FROM PLANS 4R-19213, 4R-35573 AND 4R-36051

JOB BENCHMARK
FIRE HYDRANT TOP OF SPINDLE ALONG TRANSITWAY
ELEVATION = 63.52m

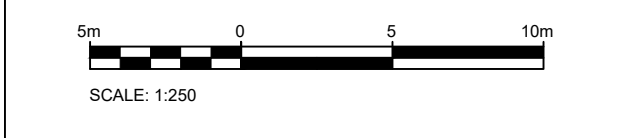
Client

 The Ottawa Hospital
1053 CARLING AVENUE,
OTTAWA, ONTARIO, K1Y 4E9
(613) 722-7000

 PARSONS
1223 MICHAEL STREET, SUITE 100
GLOUCESTER, ONTARIO, K1J 7T2



4	RE-ISSUED FOR SPA	BV	2025/05/15
3	RE-ISSUED FOR SPA	BV	2025/03/13
2	RE-ISSUED FOR SPA	BV	2025/01/17
1	ISSUED FOR SPA	BV	2024/11/08
No.	Revision	By	Date (yy/mm/dd)



Project Title

THE OTTAWA HOSPITAL
RIVERSIDE CAMPUS
PARKING LOT

Drawing Title

PARKING LOT D
PRE DEVELOPMENT
DRAINAGE AREAS

Designed by:	BV	Datum	CGVD28
Drawn by:	BV		
Approved by:	MT		
Project No.	479008	Drawing No.	C105-D

LEGEND:

----- EXISTING PROPERTY LINE

----- EXISTING WATERSHED BOUNDARY

WS-XX WATERSHED NAME

0.61 0.90 RUNOFF COEFFICIENT

AREA IN HECTARES

#19228 D07-12-25-0006

