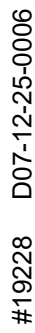
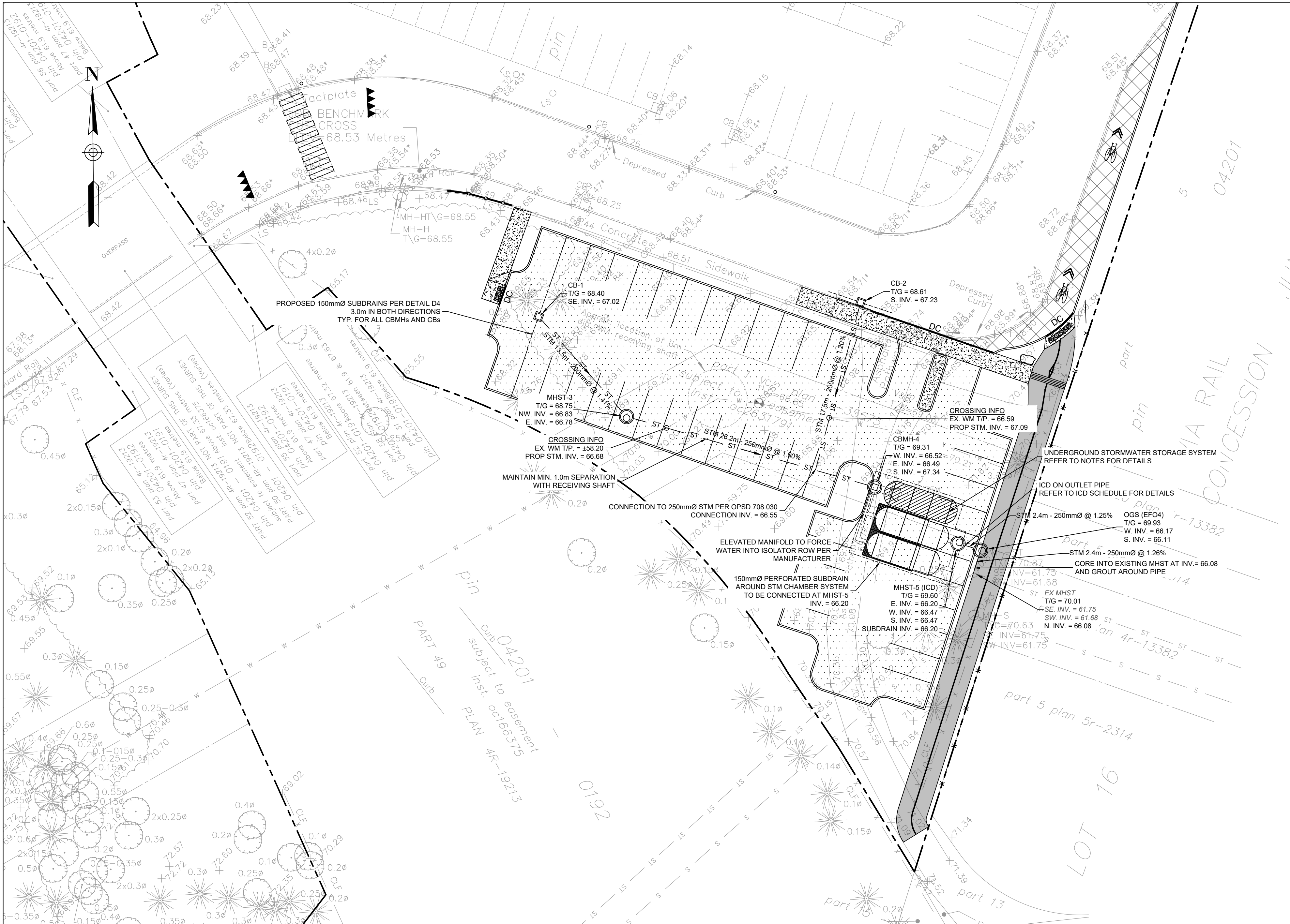


- PROVIDE PERMANENT COVER CONSISTING OF TOPSOIL AND SEED TO DISTURBED AREAS.
- ALL SEDIMENT AND EROSION CONTROL MEASURES TO BE REMOVED BY THE CONTRACTOR FOLLOWING THE COMPLETION OF WORK AND AFTER DISTURBED AREAS HAVE BEEN REHABILITATED AND STABILIZED. THIS INCLUDES REMOVE STRAW BALE FLOW CHECK DAMS, SILT FENCES AND FILTER CLOTHS ON CATCH BASINS AND MANHOLE COVERS.
- INSPECT AND CLEAN CATCH BASIN SUMPS AND STORM SEWERS.





NOTES: SEWER

- CONTRACTOR TO CONFIRM ELEVATION OF EXISTING STORM AND SANITARY SEWERS AT PROPOSED CONNECTION POINTS AND REPORT ANY DISCREPANCIES TO THE ENGINEER BEFORE COMMENCING ANY WORK.
- ALL WORK SHALL BE PERFORMED, AS APPLICABLE IN ACCORDANCE WITH OPSS 407, 408 AND 410.
- ALL STORM AND SANITARY SEWERS INSTALLED BELOW THE GROUNDWATER TABLE ELEVATION SHALL BE WATER-TIGHT AND INFILTRATION TESTS SHALL BE CARRIED OUT ACCORDING TO OPSS MUNI 410.
- PIPE MATERIAL TO BE PVC SDR-35 AND CONFORMING TO OPSS 1841, UNLESS INDICATED OTHERWISE. PVC SEWERS TO BE INSTALLED PER OPSD 802.010 (MODIFIED). BEDDING AND COVER MATERIALS TO BE OPSS 1010 GRANULAR 'A' CRUSHER-RUN LIMESTONE BEDDING COMPACTED TO 95% SPMD. ALL SEWERS WITH LESS THAN 1.5 METERS OF COVER ARE SUBJECTED TO INSULATION PER CITY OF OTTAWA STD DETAIL. S35.
- PIPE BACKFILL MATERIAL TO BE APPROVED NATIVE MATERIAL OR SELECT SUBGRADE MATERIAL IN CONFORMANCE WITH OPSS 212.
- ALL MAINTENANCE HOLES AND CATCH BASIN MAINTENANCE HOLES TO BE 1200mmØ AS PER OPSD 701.010, UNLESS INDICATED OTHERWISE. MAINTENANCE HOLES AND CATCH BASIN MAINTENANCE HOLES TO BE INSTALLED PER OPSD 407.
- ALL CATCH BASINS TO BE 600x600mm AS PER OPSD 705.010, UNLESS INDICATED OTHERWISE. CATCH BASINS TO BE INSTALLED PER OPSD 407.
- EXCAVATING, BACKFILLING, AND COMPACTING REQUIRED FOR MAINTENANCE HOLES, CATCH BASIN MAINTENANCE HOLES, AND CATCH BASINS TO BE COMPLETED AS PER OPSD 402. THEY ARE TO BE BACKFILLED WITH OPSS GRANULAR 'B' COMPACTED TO 98% SPMD. JOINTS BETWEEN SECTIONS TO BE WRAPPED WITH NON-WOVEN GEOTEXTILE.
- FOR SANITARY STRUCTURES: CAST IRON MAINTENANCE HOLE COVER AS PER OPSD 401.010 TYPE 'A'.
- FOR STORM STRUCTURES: CAST IRON CATCH BASIN MAINTENANCE HOLE COVER AS PER OPSD 401.010 TYPE 'B' AND CAST IRON CATCH BASIN COVER AS PER OPSD 400.020.
- SANITARY MAINTENANCE HOLES REQUIRE BENCHING AS PER OPSD 701.021.
- THE CONTRACTOR IS RESPONSIBLE FOR MAKING OR ARRANGING ALL CONNECTIONS TO THE EXISTING SEWERS AS PER MUNICIPAL REQUIREMENTS. PRIOR TO CONNECTION, THE CONTRACTOR MUST PROVIDE, TO THE CONSULTANT / ENGINEER AND THE CITY FOR APPROVAL, ALL TEST RESULTS PERFORMED ON THE INTERNAL SERVICES.
- ADVISE THE CITY PUBLIC WORKS AT LEAST 72 HOURS IN ADVANCE BEFORE ANY CONNECTION TO THE CITY SERVICES. CO-ORDINATE WITH CITY AS REQUIRED.
- TERMINATE AND PLUG ALL SERVICE CONNECTIONS AT 1.0 m FROM EDGE OF THE BUILDING.
- ALL SEWERS TO BE C.C.T.V. INSPECTED BY THE CONTRACTOR AS PER OPSD 409. TWO COPIES OF THE INSPECTION REPORT MUST BE PROVIDED TO THE CONSULTANT AND THE C.C.T.V. INSPECTION IN DVD FORMAT ONLY.

NOTES: UNDERGROUND STORMWATER STORAGE

- UNDERGROUND STORMWATER STORAGE SYSTEM CHAMBER TYPE OR EQUIVALENT
- CHAMBER TYPE: STORMTECH MC-7200 OR APPROVED EQUIVALENT
- STORAGE PROVIDED: 103.9m³ (INCLUDING PERIMETER STONE)
- BOTTOM OF FOUNDATION PAD ELEVATION & PERFORATED SUBDRAIN INVERT: 66.20m.
- BOTTOM OF CHAMBER ELEVATION: 66.43m.
- TOP OF CHAMBER ELEVATION: 67.96m.
- TOP OF SYSTEM (PERIMETER STONE) = 68.26m.
- TOP OF CHAMBER TO BE A MINIMUM OF 600mm BELOW PARKING LOT PAVEMENT AND MAXIMUM 2.1m.
- SYSTEM TO BE COMPLETELY WRAPPED WITH GEOTEXTILE.
- SHOP DRAWINGS FOR UNDERGROUND STORAGE SYSTEM SHALL BE PROVIDED.
- INLET AND OUTLET STRUCTURES (CBMH-4 & MHST-5) TO BE OPSD 701.010 CONCRETE MAINTENANCE HOLES

ICD SCHEDULE						
ICD ID	LOCATION	ORIFICE INVERT (m)	FLOW 5y/100y (L/s)	HEAD 5y/100y (m)	EQUIVALENT DIAMETER (mm)	MODEL*
1	MHST-5	66.20	1.9/3.3	0.68/2.04	33	JOHN MEUNIER HYDROVEX 50VHV-1

* ICD SHOP DRAWINGS SHALL BE SUBMITTED TO PARSONS BEFORE COMMENCING ANY WORK

LEGEND:

- EXISTING PROPERTY LINE
- EXISTING WATERMAIN
- EXISTING VALVE BOX
- EXISTING VALVE CHAMBER
- EXISTING SANITARY SEWER AND MAINTENANCE HOLE
- EXISTING STORM SEWER AND MAINTENANCE HOLE
- PROPOSED STORM SEWER AND MAINTENANCE HOLE
- PROPOSED CATCH BASIN MAINTENANCE HOLE WITH 3.0m SUBDRAINS IN BOTH DIRECTIONS
- PROPOSED CATCH BASIN WITH 3.0m SUBDRAINS IN BOTH DIRECTIONS



Surveyor

ANNIS, O'SULLIVAN, VOLLEBECK LTD.
14 CONOURSE GATE, SUITE 500
NEPEAN, ONTARIO, K2E 7S6

TOPOGRAPHIC INFORMATION & BENCHMARK
SURVEY COMPLETED BY ANNIS, O'SULLIVAN, VOLLEBECK LTD. ON MARCH 21, 2024. ELEVATIONS SHOWN ARE GEODETIC AND ARE REFERRED TO THE CGVD28 GEODETIC DATUM, DERIVED FROM CONTROL MONUMENT NO. 019680274 HAVING AN ELEVATION OF 66.322m.

BOUNDARY INFORMATION WAS COMPILED FROM PLANS 4R-19213, 4R-35573 AND 4R-36051

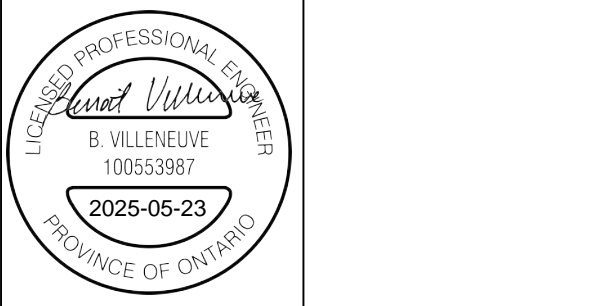
JOB BENCHMARK
CUT CROSS ON SIDEWALK NEAR OVERPASS
ELEVATION = 68.53m

Client

The Ottawa Hospital | L'Hôpital d'Ottawa

THE OTTAWA HOSPITAL
1053 CARLING AVENUE,
OTTAWA, ONTARIO, K1V 4E9
(613) 722-7000

PARSONS
1223 MICHAEL STREET, SUITE 100
GLOUCESTER, ONTARIO, K1J 7T2



4	RE-ISSUED FOR SPA	BV	2025/05/15
3	RE-ISSUED FOR SPA	BV	2025/03/13
2	RE-ISSUED FOR SPA	BV	2025/01/17
1	ISSUED FOR SPA	BV	2024/11/08

No.	Revision	By	Date (yy/mm/dd)

Scale
5m 0 5 10m
SCALE: 1:250

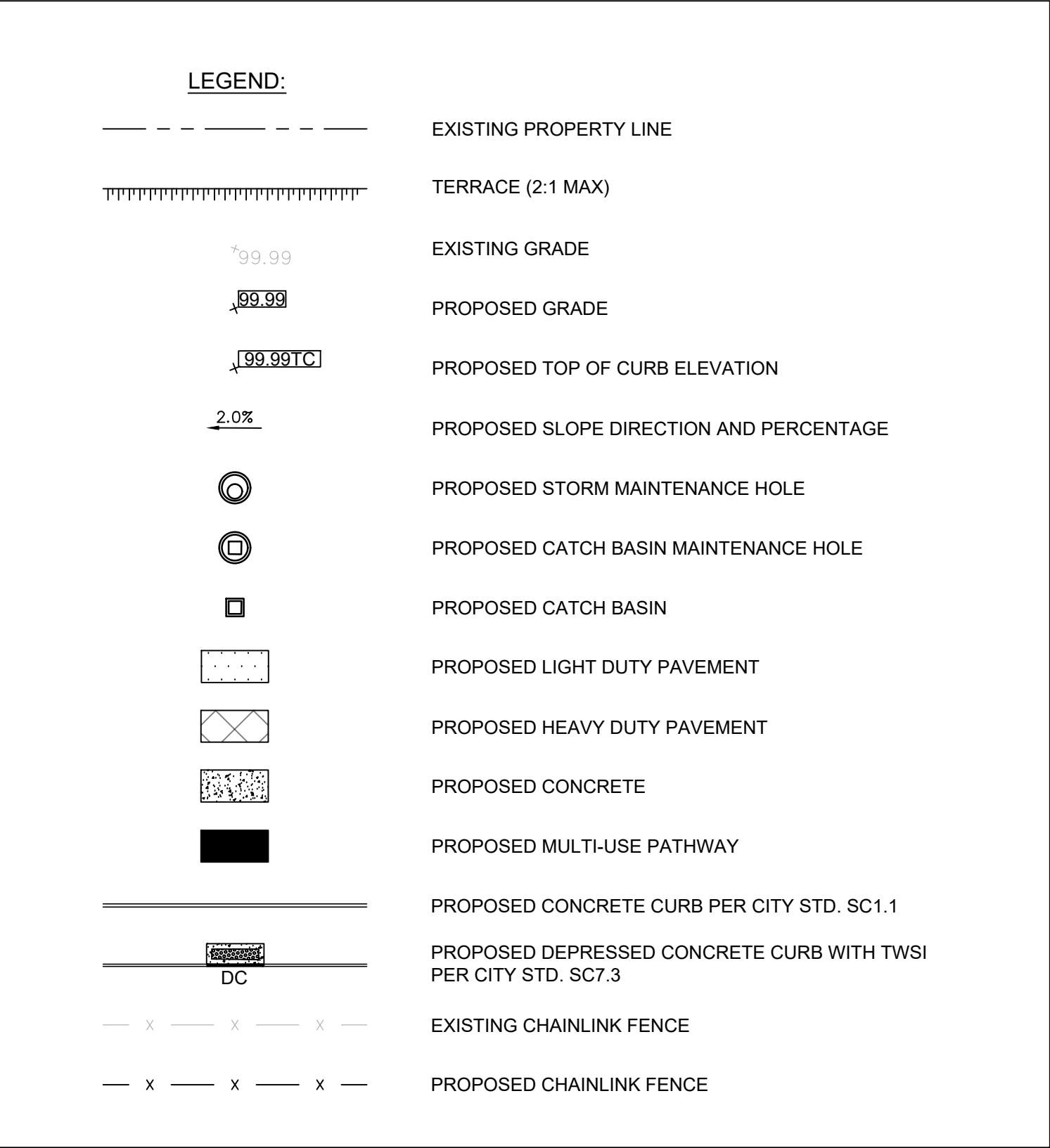
Project Title

1967 RIVERSIDE DRIVE
RIVERSIDE CAMPUS
PARKING LOTS

Drawing Title

PARKING LOT C
SITE SERVICING PLAN

Designed by:	BV	Datum CGVD28 ORIGINAL
Drawn by:	BV	
Approved by:	MT	
Project No.	479008	
		Drawing No.
		C102-C



Surveyor



ANNIS, O'SULLIVAN, VOLLEBEKK LTD.
14 CONCOURSE GATE, SUITE 500
NEPEAN, ONTARIO, K2E 7S6

TOPOGRAPHIC INFORMATION & BENCHMARK
SURVEY COMPLETED BY ANNIS, O'SULLIVAN, VOLLEBEKK LTD. ON MARCH 21, 2024. ELEVATIONS SHOWN ARE GEODETIC AND ARE REFERRED TO THE CGVD28 GEODETIC DATUM, DERIVED FROM CONTROL MONUMENT NO. 019680274 HAVING AN ELEVATION OF 66.322m.

BOUNDARY INFORMATION WAS COMPILED FROM PLANS
4R-19213, 4R-35573 AND 4R-36051

JOB BENCHMARK

CUT CROSS ON SIDEWALK NEAR OVERPASS
ELEVATION = 68.53m

Client

 The Ottawa Hospital | L'Hôpital d'Ottawa

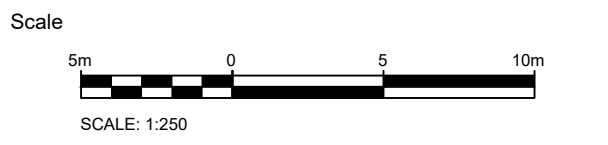
THE OTTAWA HOSPITAL
1053 CARLING AVENUE,
OTTAWA, ONTARIO, K1Y 4E9
(613) 722-7000



PARSONS
1223 MICHAEL STREET, SUITE 100
GLOUCESTER, ONTARIO, K1J 7T2



4	RE-ISSUED FOR SPA	BV	2025/05/15
3	RE-ISSUED FOR SPA	BV	2025/03/13
2	RE-ISSUED FOR SPA	BV	2025/01/17
1	ISSUED FOR SPA	BV	2024/11/08
No.	Revision	By	Date (yy/mm/dd)

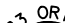


Project Title

1967 RIVERSIDE DRIVE
RIVERSIDE CAMPUS
PARKING LOTS

Drawing Title

PARKING LOT C
GRADING PLAN

Designed by: BV	
Drawn by: BV	
Approved by: MT	
Project No. 479008	Drawing No. C103-C

#19228	D07-12-25-0006
--------	----------------

NOTES: GENERAL

- THE CONTRACTOR MUST CONFORM TO ALL LAWS, CODES, ORDINANCES, AND REGULATIONS ADOPTED BY FEDERAL, PROVINCIAL OR MUNICIPAL GOVERNMENT COUNCILS AND GOVERNMENT AGENCIES, APPLYING TO WORK TO BE CARRIED OUT. REVER STANDARD, LAWS, AND REGULATIONS AS MENTIONED THEY REFER TO THEIR CURRENT VERSIONS, MODIFICATIONS INCLUDED.
- ALL MATERIALS AND CONSTRUCTION METHODS SHALL BE IN ACCORDANCE WITH THE LATEST EDITION OF THE ONTARIO PROVINCIAL STANDARD SPECIFICATIONS AND STANDARDS (PSSS) AND ORDINANCES (PSSO) AND MINISTRY OF ENVIRONMENT AND CLIMATE CHANGE, THE ONTARIO MINISTRY OF NATURAL RESOURCES, APPLICABLE CONSERVATION AUTHORITIES, THE MUNICIPAL STANDARD SPECIFICATIONS AND DRAWINGS, AND ALL OTHER GOVERNING AUTHORITIES AS THEY APPLY, UNLESS OTHERWISE INDICATED.
- ALL MATERIAL SUPPLIED AND PLACED FOR PARKING LOT AND ACCESS ROAD CONSTRUCTION SHALL BE TO PSSS STANDARDS AND SPECIFICATIONS UNLESS OTHERWISE NOTED. CONSTRUCTION TO PSSS 206, 310 & 314. MATERIALS TO PSSS 1002 & 1010.
- THE LOCATION OF EXISTING UNDERGROUND MUNICIPAL SERVICES AND PUBLIC UTILITIES AS SHOWN ON THE PLANS ARE APPROXIMATE. THE CONTRACTOR MUST DETERMINE THE EXACT LOCATION, DEPTH, AND TYPE OF ALL EXISTING UTILITIES AND EXISTING UTILITIES (ON-SITE AND OFF-SITE) PRIOR TO ANY EXCAVATION WORK. DAMAGE TO ANY EXISTING SERVICES AND/OR EXISTING UTILITIES DURING CONSTRUCTION, WHETHER OR NOT SHOWN ON THE DRAWINGS MUST BE COVERED BY THE CONTRACTOR AT HIS OWN RISK AND EXPENSE.
- THE CONTRACTOR SHALL DETERMINE THE EXACT INVERT (GEODETIC ELEVATION), DIAMETER AND CONSTRUCTION MATERIAL OF THE EXISTING CONDUITS AT THE PROPOSED CONNECTIONS. THEY SHALL ALSO CARRY OUT, IF NECESSARY, THE EXCAVATION WORK IN ORDER TO LOCATE AND INVERT THE EXISTING CONDUITS OF EXISTING DUCK BANKS. THIS INFORMATION SHALL IMMEDIATELY BE PROVIDED TO THE CONSULTANT PRIOR TO START UNDERTAKING ANY MUNICIPAL SERVICES WORK AND A 48 HOUR PERIOD MUST BE ALLOCATED TO THE CONSULTANT FOR DESIGN REVIEW.
- AT PROPOSED UTILITY CONNECTION POINTS AND CROSSINGS (I.E. STORM SEWER, SANITARY SEWER, WATER, ETC.) THE CONTRACTOR SHALL DETERMINE THE PRECISE LOCATION AND DEPTH OF EXISTING UTILITIES AND REPORT ANY DISCREPANCIES OR CONFLICTS TO THE CONSULTANT AND INVERTS OF EXISTING DUCK BANKS. THIS INFORMATION SHALL IMMEDIATELY BE PROVIDED TO THE CONSULTANT PRIOR TO START UNDERTAKING ANY MUNICIPAL SERVICES WORK AND A 48 HOUR PERIOD MUST BE ALLOCATED TO THE CONSULTANT FOR DESIGN REVIEW.
- AT PROPOSED UTILITY CONNECTION POINTS AND CROSSINGS (I.E. STORM SEWER, SANITARY SEWER, WATER, ETC.) THE CONTRACTOR SHALL DETERMINE THE PRECISE LOCATION AND DEPTH OF EXISTING UTILITIES AND REPORT ANY DISCREPANCIES OR CONFLICTS TO THE CONSULTANT AND INVERTS OF EXISTING DUCK BANKS. THIS INFORMATION SHALL IMMEDIATELY BE PROVIDED TO THE CONSULTANT PRIOR TO START UNDERTAKING ANY MUNICIPAL SERVICES WORK AND A 48 HOUR PERIOD MUST BE ALLOCATED TO THE CONSULTANT FOR DESIGN REVIEW.
- THE CONTRACTOR IS RESPONSIBLE FOR ALL LAYOUT FOR CONSTRUCTION PURPOSES.
- THE CONTRACTOR IS RESPONSIBLE FOR THE COORDINATION OF ALL WORK AND ACTIVITIES WITH OTHERS TRADES AND CONTRACTORS.
- THE CONTRACTOR IS THE ONLY ONE IN CHARGE OF ALL SAFETY ON THE BUILDING SITE. THE CONTRACTOR IS RESPONSIBLE FOR PROVIDING ADEQUATE PROTECTION OF THE WORKERS, OTHER PERSONNEL AND THE GENERAL PUBLIC, PROTECTION OF MATERIALS, AS WELL AS MAINTAINING IN GOOD CONDITION THE COMPLETED WORKS AND WORKS TO BE COMPLETED. THE CONTRACTOR MUST PROVIDE AT ANY TIME:
- A SUFFICIENT NUMBER OF FENCES, BARRIERS, POSTERS, GUARDS AND OTHERS TO ENSURE SAFETY.
 - NECESSARY CONVENIENCE FOR THE COMPLETION OF WORK SUCH AS HEATING, LIGHTING, VENTILATION ETC.
- THE CONTRACTOR IS RESPONSIBLE TO OBTAIN THE VARIOUS PERMITS/APPROVALS REQUIRED TO COMPLETE ALL WORK AND ACTIVITIES AND BEAR COST OF THE SAME, SUCH AS BUT NOT LIMITED TO, ROAD CUT PERMITS, SEWER PERMITS, WATER PERMIT, ETC. AND THEIR ASSOCIATED COSTS.
- ALL ELEVATIONS ARE GEODETIC AND UTILITY METRIC UNITS.
- OTHERWISE THESE REFERENCES WILL BE GRADED BY A CERTIFIED LAND SURVEYOR AT THE CONTRACTOR'S EXPENSE.
- ALL GROUND SURFACES SHALL BE REPOSED WITHOUT PONDING AREAS AND LOW POINTS EXCEPT WHERE APPROVED SWALE OR CATCH BASIN OUTLETS ARE PROVIDED.
- IF GROUNDWATER IS ENCOUNTERED DURING CONSTRUCTION, Dewatering of EXCAVATIONS MUST BE REQUIRED. IT IS ASSUMED THAT GROUNDWATER MAY BE CONTROLLED BY SUMP AND PUMPING METHODS. THE CONTRACTOR SHALL OBTAIN A PERMIT TO TAKE WATER IF SITE CONDITIONS REQUIRE TAKING MORE THAN A TOTAL OF 400,000 L/DAY.
- REMOVE ALL TOPSOIL FROM IMPROVED AREAS. SITE PREPARATION INCLUDES CLEARING, GRUBBING, STRIPPING OF TOPSOIL, DEMOLITION, REMOVAL OF UNSUITABLE MATERIALS, CUT, FILL AND ROUGH GRADING OF ALL AREAS TO PREPARE FINISHED SURFACES.
- ABUTTING PROPERTY GRADINGS BE MATCHED.
- ALL EDGES OF DISTURBED PAVEMENT SHALL BE SAW CUT TO FORM A NEAT AND STRAIGHT LINE PRIOR TO PLACING NEW PAVEMENT. PAVEMENT REINSTATEMENT SHALL BE WITH STEP JOINTS TO MATCH EXISTING PAVEMENT.
- CURBS TO BE BARRIER, CONSTRUCTED AS PER PSSP 600.10, EXCEPT WHERE INDICATED OTHERWISE. ELEVATION AT TOP OF CONCRETE CURBS TO BE 150 mm ABOVE THE ASPHALT, UNLESS OTHERWISE INDICATED ON THE DRAWINGS.
- DEPRESSED ROAD CURBS TO BE 150 mm ABOVE THE ASPHALT.
- LIGHT DUTY AND HEAVY DUTY ASPHALT PAVEMENTS TO BE CONSTRUCTED AS PER TABLE ON DRAWING C10-3.
- TRANSITION BETWEEN EXISTING AND PROPOSED PAVEMENT SHALL BE CONSTRUCTED AS PER TABLE ON DRAWING C10-3.
- RESTORE PAVEMENT STRUCTURE AND SURFACES ON EXISTING ROADS TO A CONDITION AT LEAST EQUAL TO ORIGINAL AND TO THE SATISFACTION OF THE MUNICIPAL AUTHORITIES.
- CLEANLINESS - THE SITES INCLUDE THE CONTRACTOR SHALL CLEAN ROADWAYS AT HIS OWN COST AS DIRECTED BY THE OWNER'S REPRESENTATIVE. MATERIALS AND EQUIPMENT MUST BE LAID OUT IN AN ORGANIZED AND SAFE MANNER, AND ALL MATERIAL, EQUIPMENT AND TEMPORARY STRUCTURES WHICH ARE NO LONGER NECESSARY FOR THE EXECUTION OF THE CONTRACT MUST BE REMOVED FROM THE SITE.
- CONTRACTOR TO ENSURE MITIGATION MEASURES ARE IMPLEMENTED TO REDUCE THE RISK OF GROUND CONTAMINATION FROM PETROLEUM PRODUCTS.
- THE CONTRACTOR MUST ENSURE THAT FOLLOWING MEASURES ARE IMPLEMENTED REGARDING THE HANDLING OF CONCRETE:
- CONCRETE SHOULD EITHER BE MIXED AWAY FROM THE SITE OR SHOULD BE PREPARED ON PAVED SURFACES IF ONLY SMALL QUANTITIES ARE REQUIRED (I.E. MINOR REPAIRS).
 - EXCESS CONCRETE MUST BE DISPOSED OFF-SITE AT A LOCATION THAT MEETS ALL REGULATORY REQUIREMENTS.
 - THE WASHING OF CONCRETE TRUCKS OR OTHER EQUIPMENT USED FOR MIXING CONCRETE SHOULD NOT BE CARRIED OUT WITHIN 30 METERS OF A WATERCOURSE OR WETLAND AND SHOULD TAKE PLACE OUTSIDE OF THE WORK SITE.
 - ALL CONCRETE TRUCKS SHOULD COLLECT THEIR WASH WATER AND RECYCLE IT BACK INTO THEIR TRUCKS FOR DISPOSAL OFF-SITE AT A LOCATION MEETING ALL REGULATORY REQUIREMENTS.
- THE CONTRACTOR SHALL ENSURE THAT ALL EXCAVATED SURPLUS MATERIALS THAT WILL BE REQUIRED TO BE DISPOSED OFF-SITE BE STOCKPILED TEMPORARILY FOR SAMPLING PRIOR BEING LOADED OFFSITE.
- TRENCHING, BACKFILLING AND COMPACTING MUST CONFORM TO PSSP 401.
- DETERMINATION OF PIRLINE, UTILITY AND ASSOCIATED STRUCTURE EXCAVATIONS TO BE COMPLETED AS PER PSSP 517.
- THE CONTRACTOR MUST CONTROL SURFACE RUNOFF FROM PRECIPITATION DURING CONSTRUCTION.
- ALL GEOTECHNICAL WORK, CONTRACTOR TO REFER TO "GEOTECHNICAL INVESTIGATION, PROPOSED NEW EMPLOYEE PARKING LOTS "C" AND "C1", THE OTTAWA HOSPITAL, RIVERSIDE CAMPUS, OTTAWA, ONTARIO, BY GEMTEC. DATED MARCH 13, 2025".
- REMOVE ALL SITE ALL EXCESS EXCAVATED MATERIAL UNLESS OTHERWISE DIRECTED FROM THE ENGINEER. EXCAVATE AND REMOVE ALL ORGANIC MATERIAL AND DEBRIS LOCATED WITHIN THE PROPOSED BUILDING, PARKING AND ROADWAY LOCATIONS.
- THE CONTRACTOR IS RESPONSIBLE FOR ALL EXCAVATION, BACKFILL AND REINSTATEMENT OFF ALL AREAS DISTURBED DURING CONSTRUCTION TO EXISTING CONDITIONS OR BETTER AND ALL ASSOCIATED WORKS TO THE EXISTING CONDITIONS. REINSTATEMENT SHALL BE IN ACCORDANCE WITH PSSP 130. LANDSCAPE AREAS TO BE REINSTATED WITH 150 mm of TOPSOIL AND SOO IN ACCORDANCE WITH PSSP 802 AND PSSP 803.
- DURING THE CONSTRUCTION PERIOD THE CONTRACTOR IS RESPONSIBLE FOR INSTALLING AND MAINTAINING TEMPORARY TRAFFIC SIGNAGE, INCLUDING TRAFFIC SIGNS, TRAFFIC MARKINGS AND TEMPORARY TRAFFIC LIGHTS, AND FLAGMANS, AS REQUIRED BY THE OWNER, THE CONSULTANT, THE MUNICIPALITY, OR THE PROVINCE.
- CONSTRUCT SIDEWALK EXPANSION JOINTS & CONTROL JOINTS AS PER PSSP 310.020.
- CONSTRUCT CONCRETE SIDEWALK AS PER PSSP 310.020 AND PSSP 351. TACTILE WALKING SURFACE INDICATORS (PSSP 351).
- DISPOSE OF CONTAMINATED MATERIALS AT APPROPRIATE OFF-SITE FACILITY THAT MEETS ALL REGULATORY REQUIREMENTS.
- BE PREPARED TO INTERCEPT, CLEAN UP, AND DISPOSE OF SPILLS OR RELEASES THAT MAY OCCUR DURING CONSTRUCTION. PROVIDE MATERIALS AND EQUIPMENT REQUIRED FOR CLEANUP OF SPILLS OR RELEASES READILY ACCESSIBLE ON SITE.
- PROMPTLY REPORT SPILLS AND RELEASES POTENTIALLY CAUSING DAMAGE TO THE ENVIRONMENT TO ANY AUTHORITY HAVING JURISDICTION OR INTEREST IN SPILL OR RELEASE INCLUDING CONSERVATION AUTHORITY, WATER SUPPLY AUTHORITIES, DRAINAGE AUTHORITY, ROAD AUTHORITY, AND FIRE DEPARTMENT.
- DECONTAMINATE EQUIPMENT WORKING IN POTENTIALLY CONTAMINATED AREAS AND EQUIPMENT TO BE SUBSTITUTED WITH CLEAN EQUIPMENT.
- DO NOT DISCHARGE DECONTAMINATED WATER, OR SURFACE WATER RUNOFF, OR GROUNDWATER WHICH MAY HAVE COME IN CONTACT WITH POTENTIALLY CONTAMINATED AREAS OR EQUIPMENT TO ANY WATERCOURSE OR WETLAND.
- CONTRACTOR IS TO SUBMIT A TRAFFIC MANAGEMENT PLAN FOR APPROVAL ONE (1) WEEK PRIOR TO ANY WORK WITHIN THE ROAD LIMITS TO MEET THE REQUIREMENTS OF MTO BOOK 7. THE CONTRACTOR WILL BE REQUIRED TO IMPLEMENT ALL REQUIREMENTS OF THE TRAFFIC MANAGEMENT PLAN.
- CITY PUBLIC WORKS DEPARTMENT TO BE CONTACTED MINIMUM 7 DAYS PRIOR TO PLANNED DATE FOR CONNECTION TO EXISTING STORM SEWERS, SANITARY SEWERS, AND WATERMAIN, CONNECTION TO EXISTING TO TAKE PLACE IN THE PRESENCE OF APPROPRIATE CITY OF OTTAWA STAFF.


PAVEMENT STRUCTURES

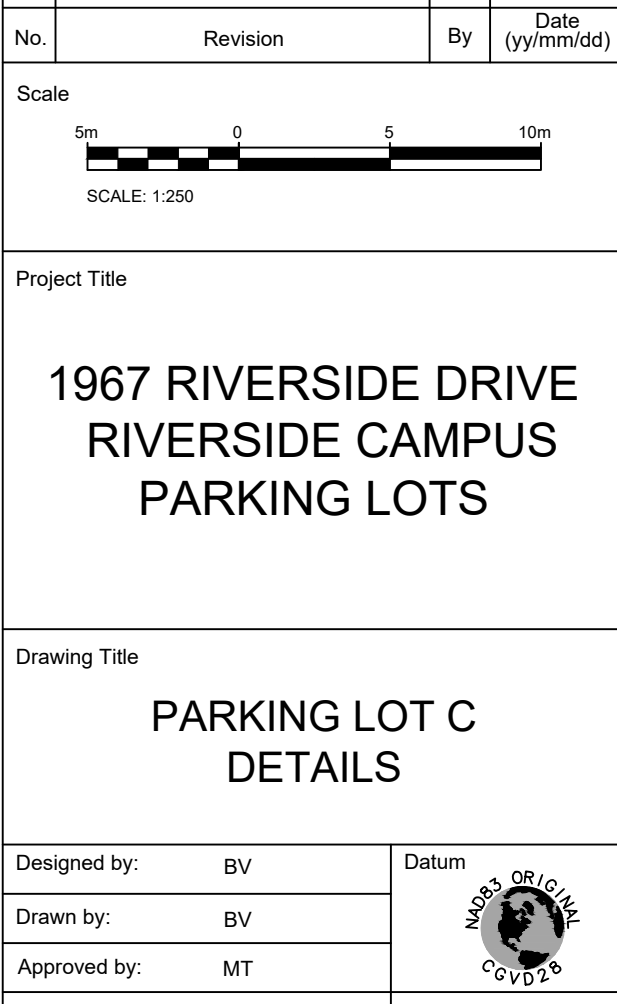
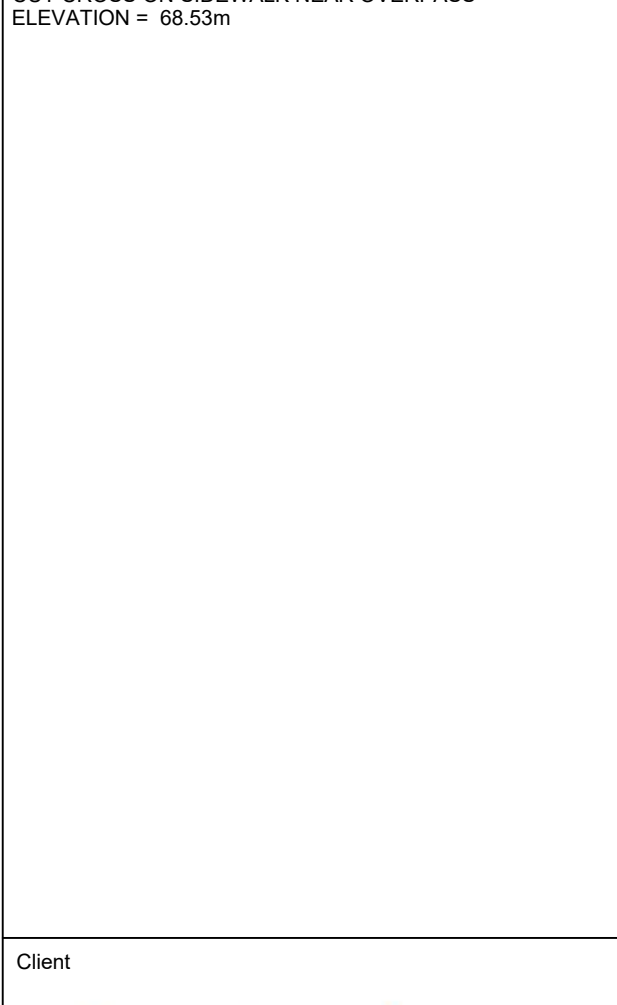
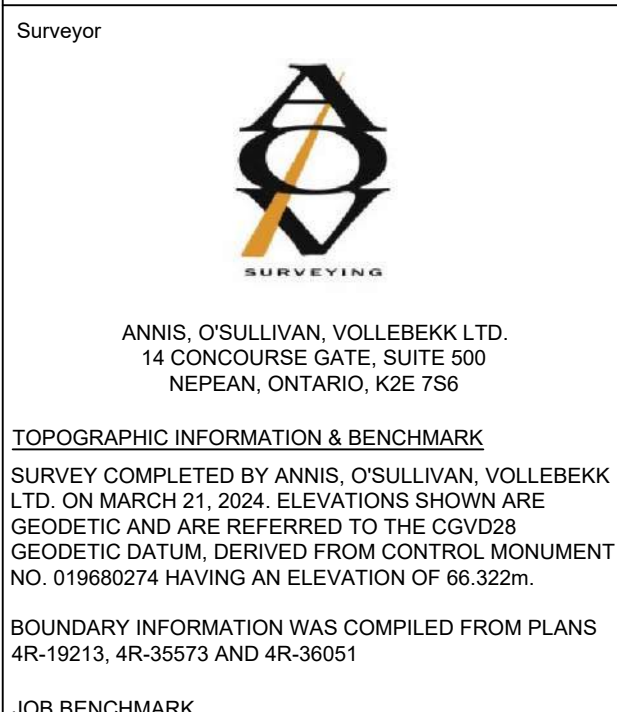
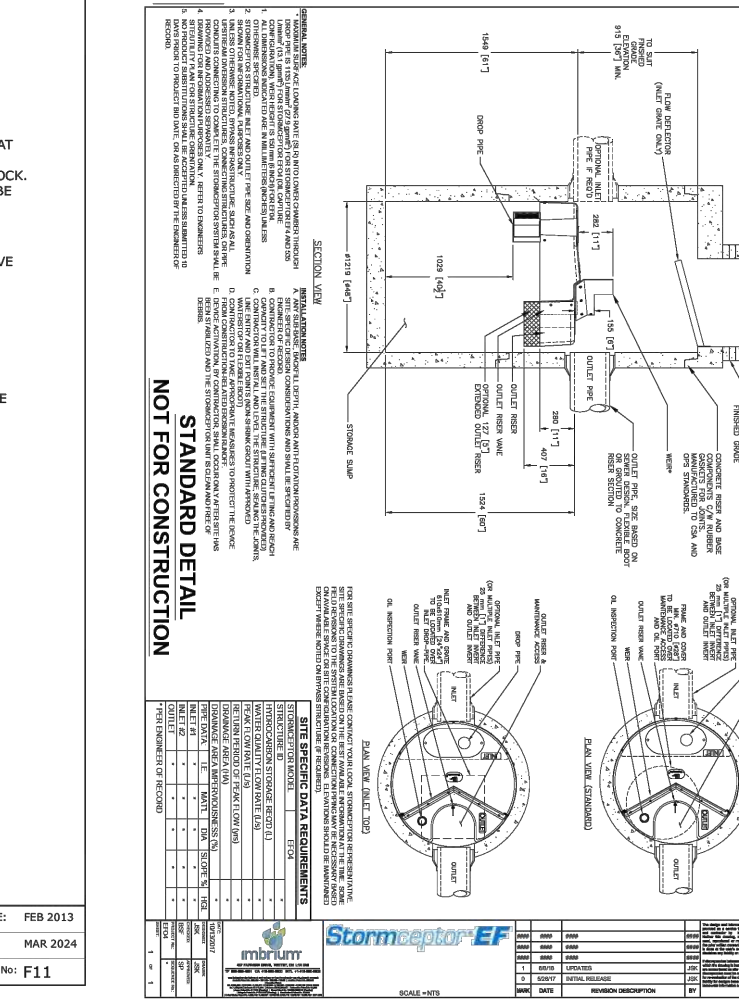
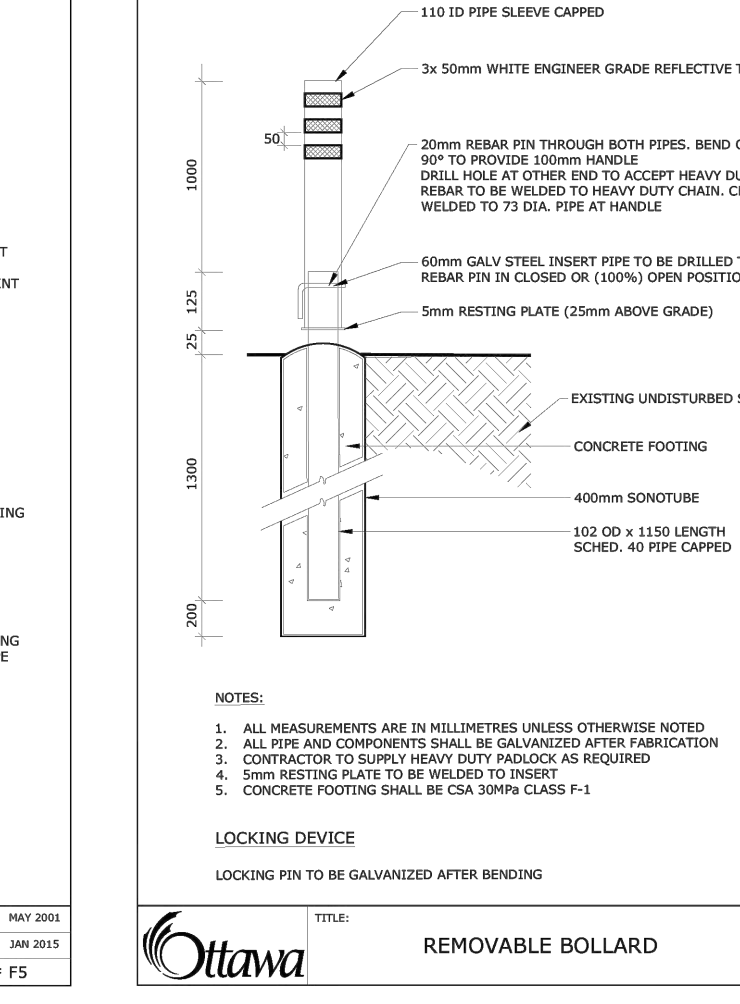
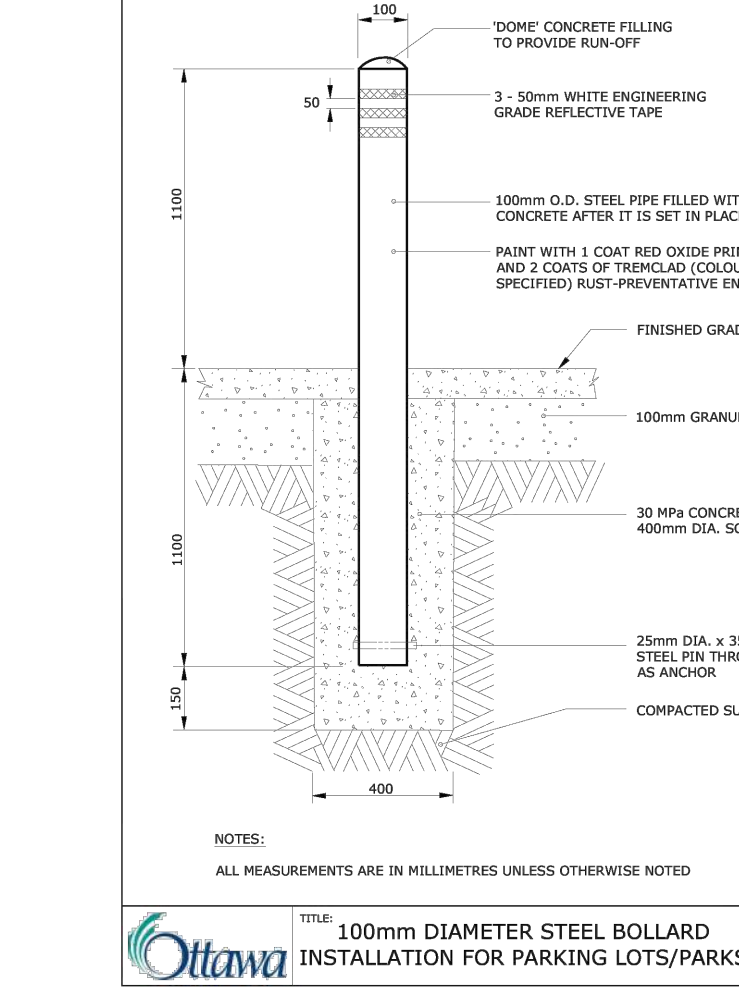
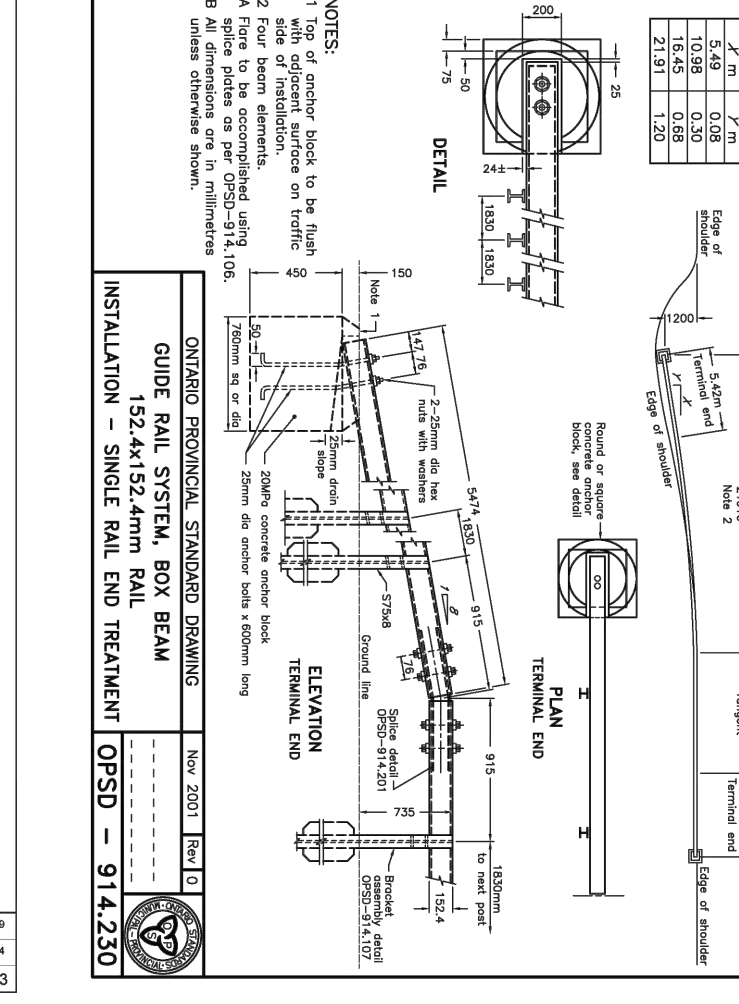
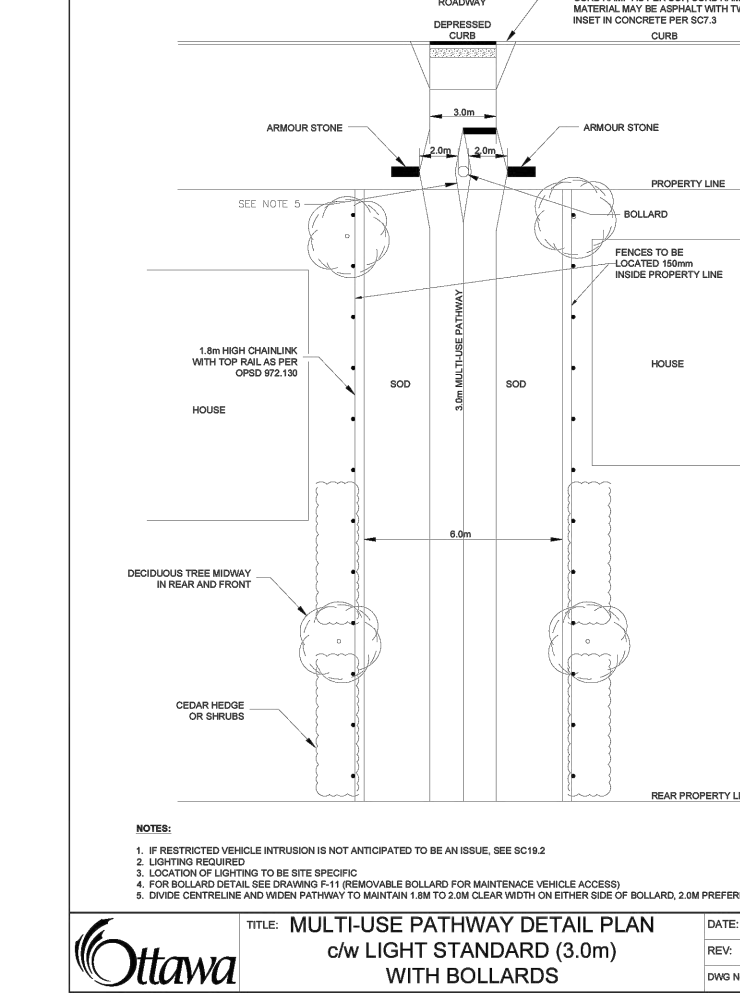
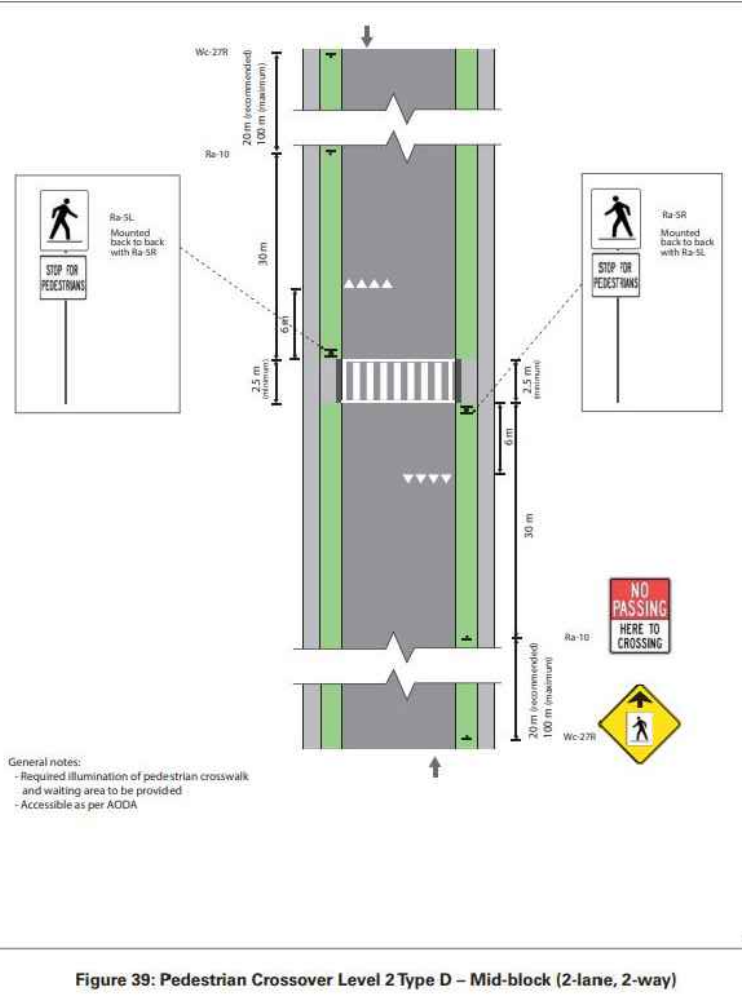
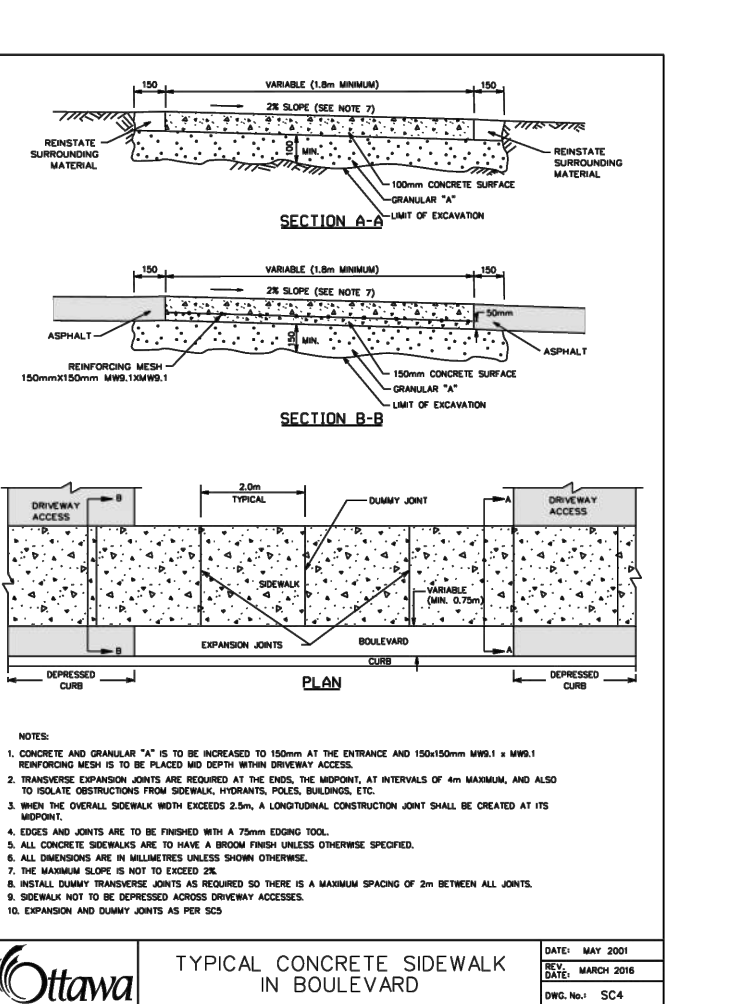
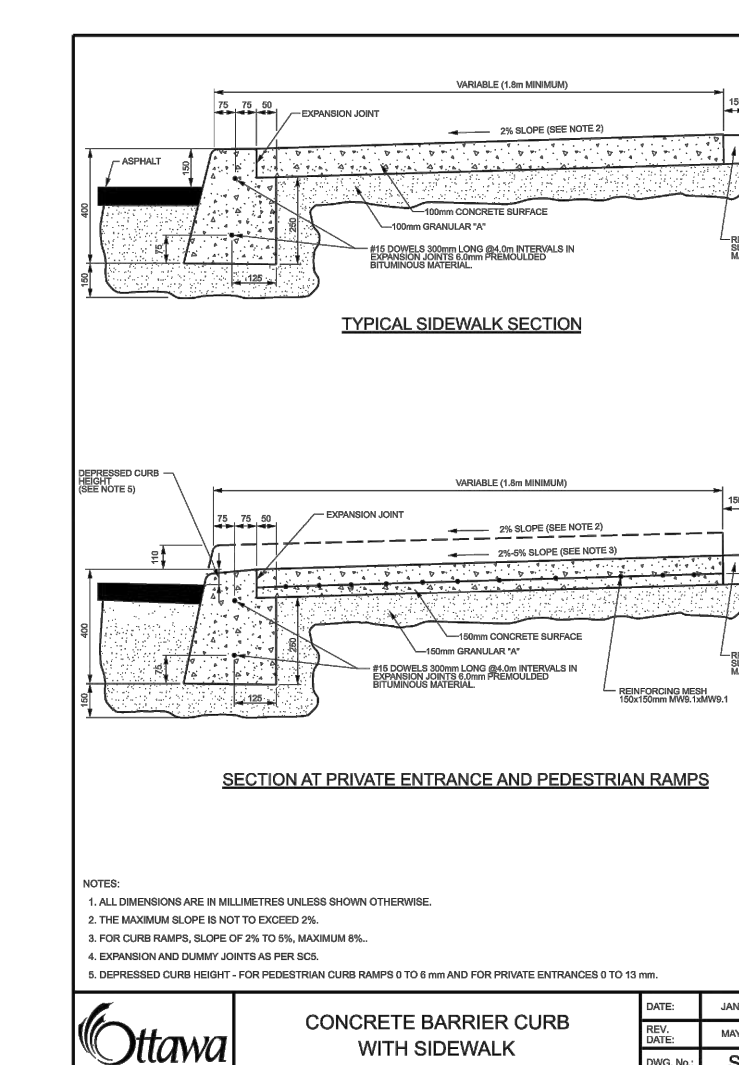
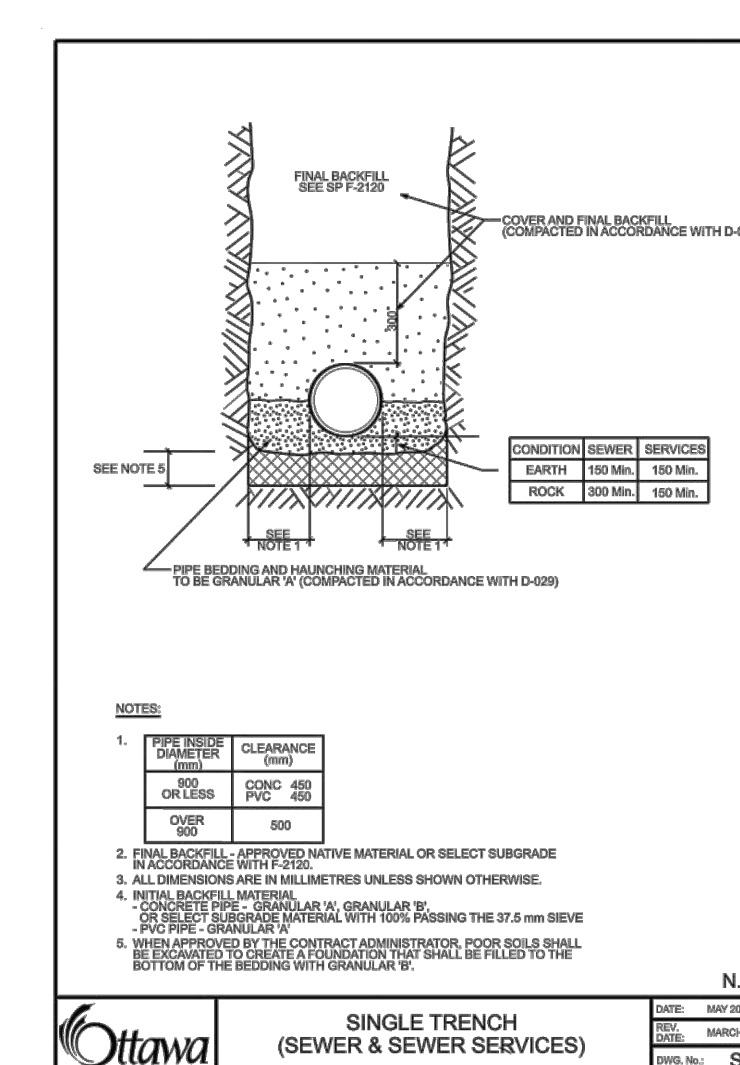
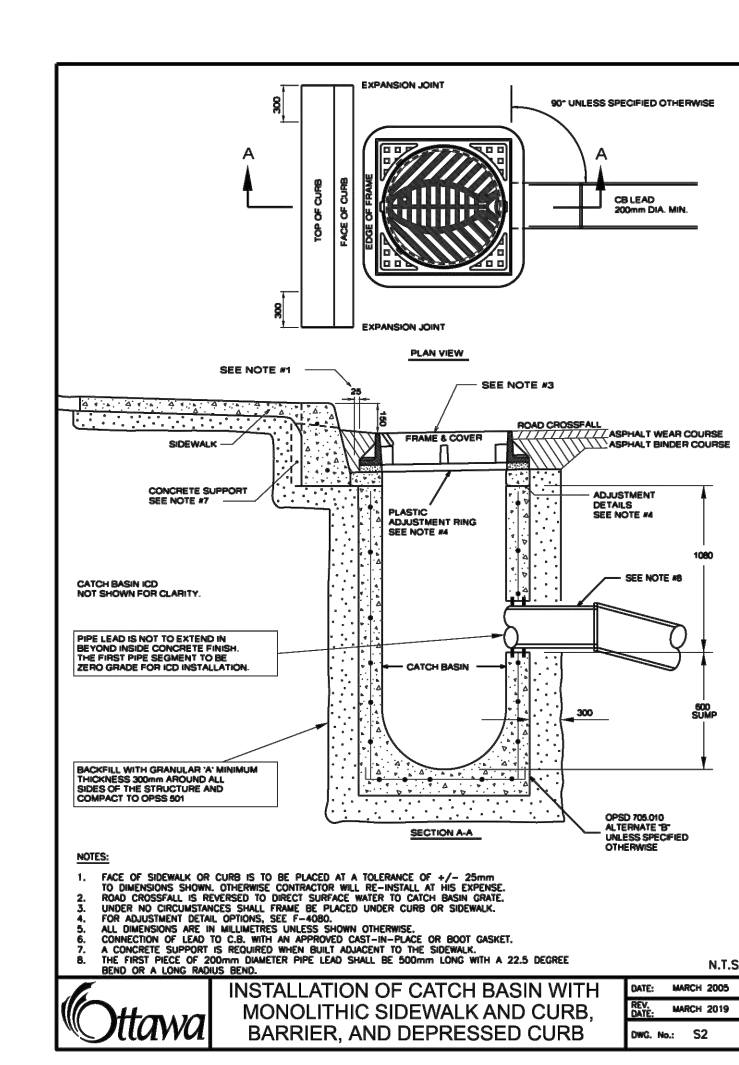
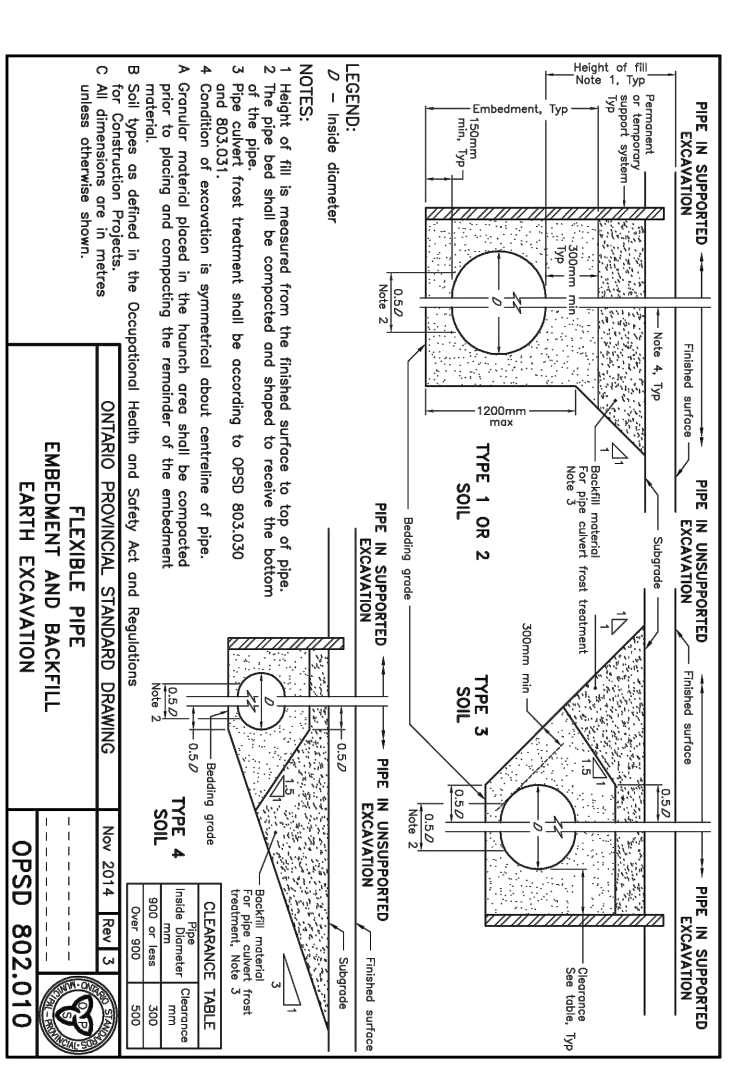
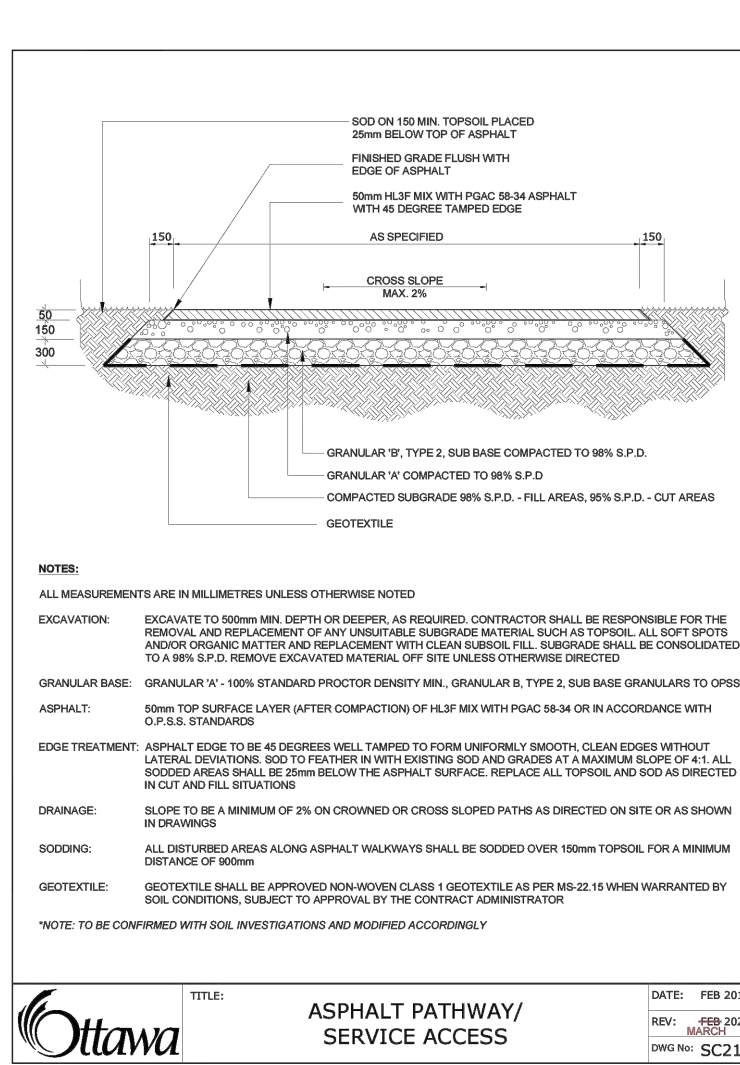
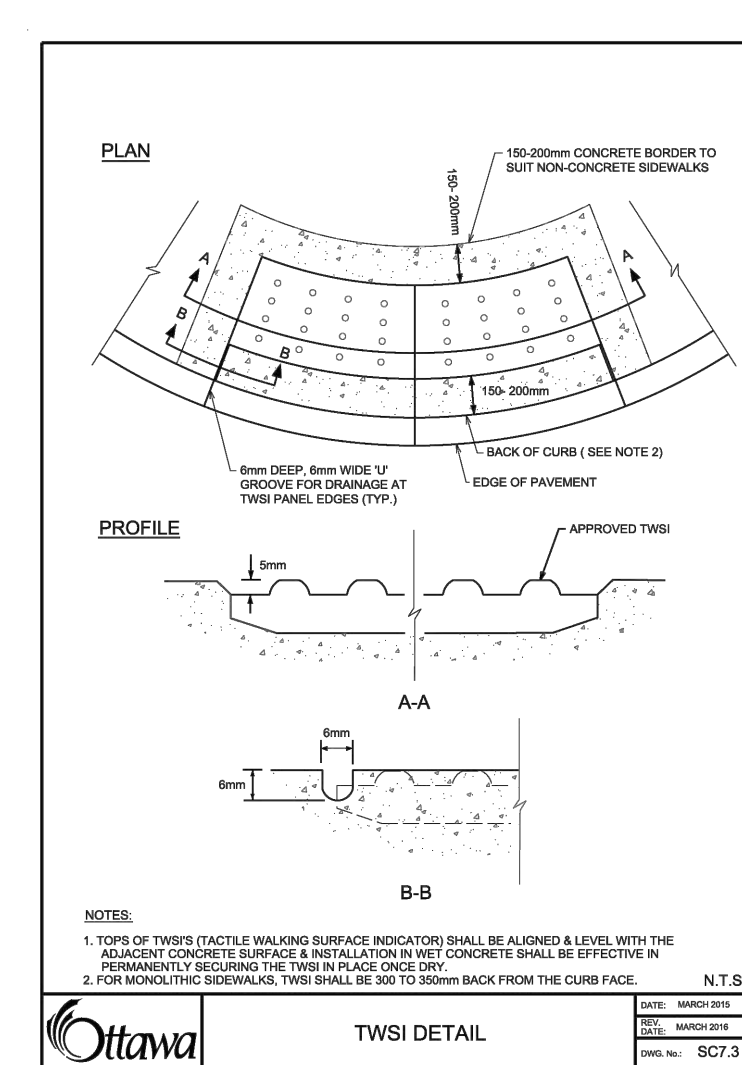
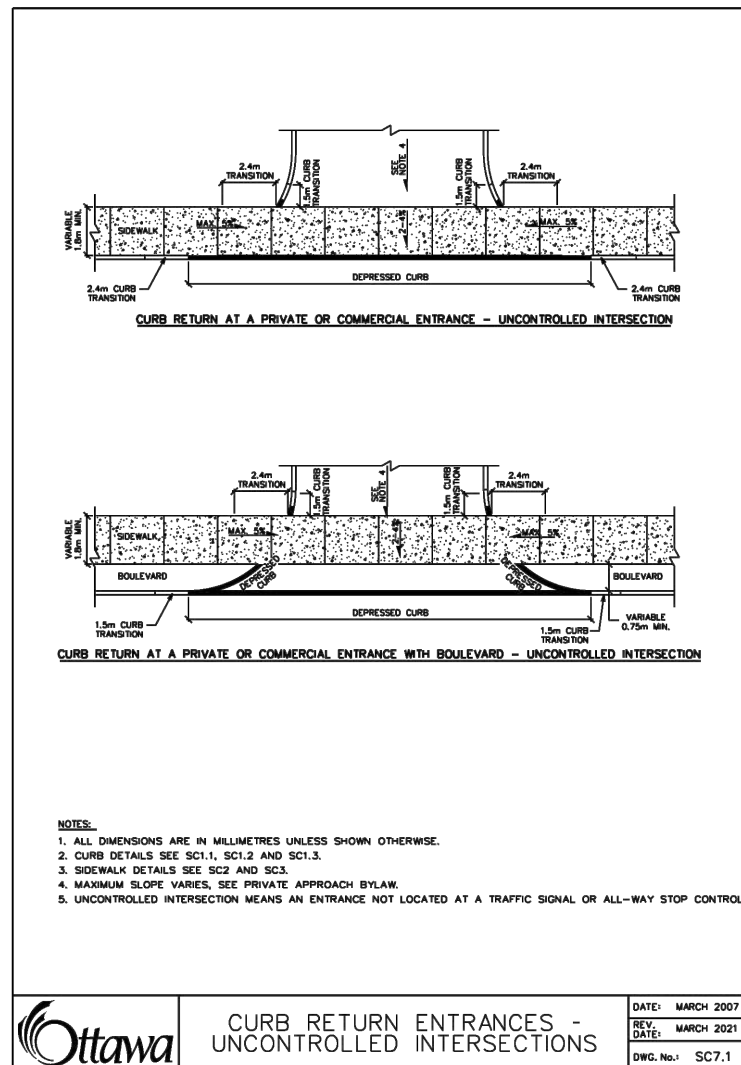
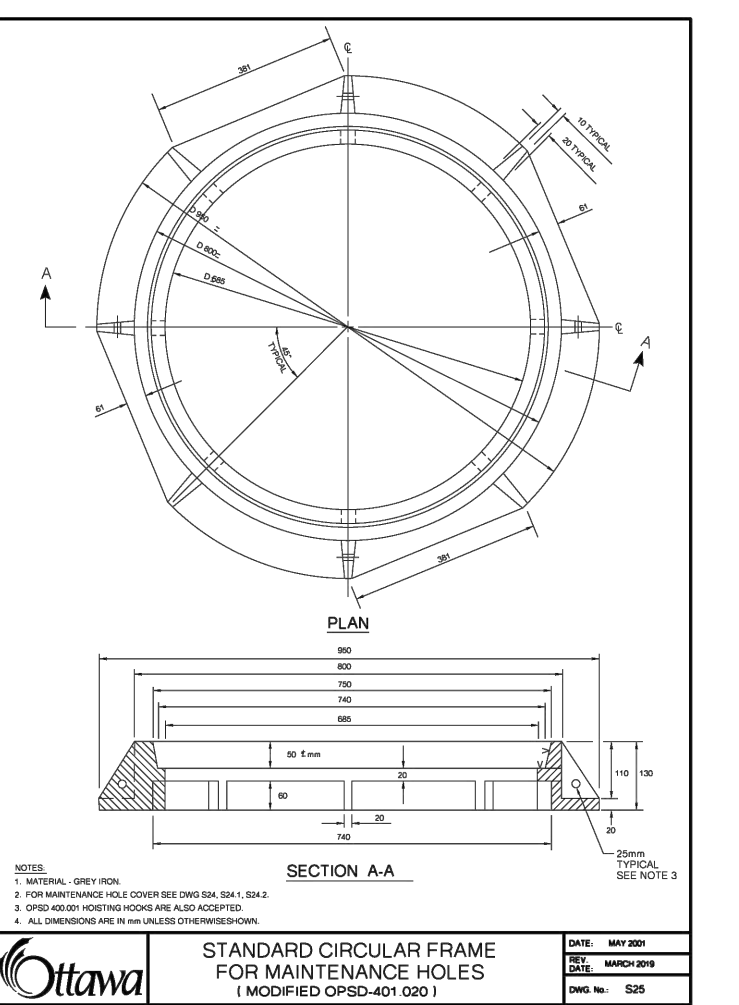
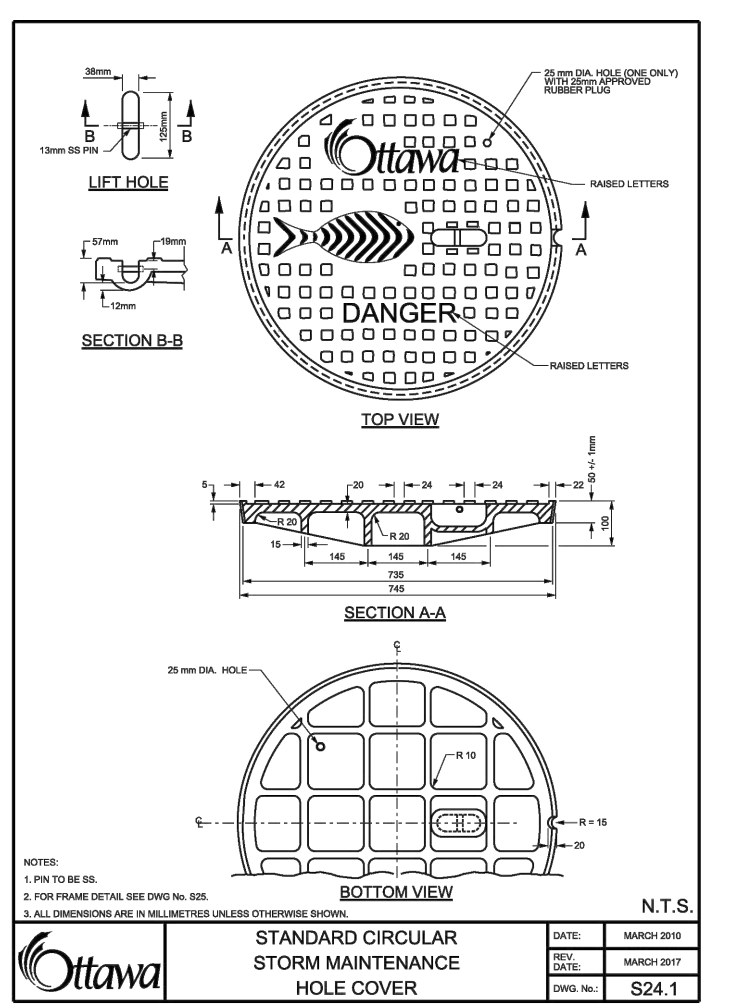
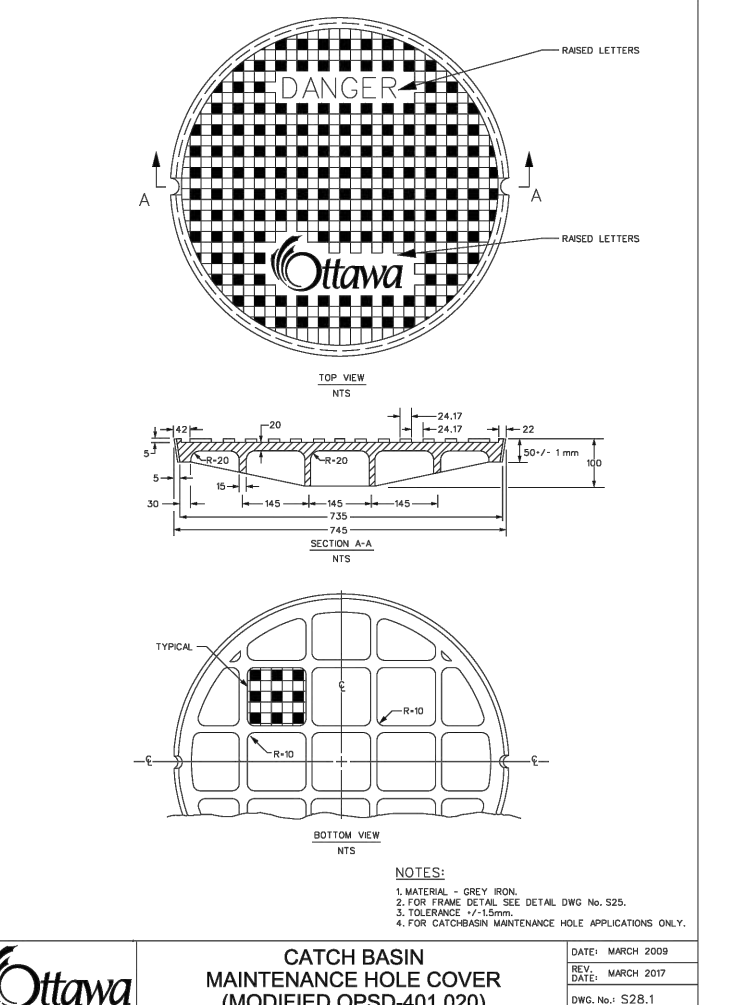
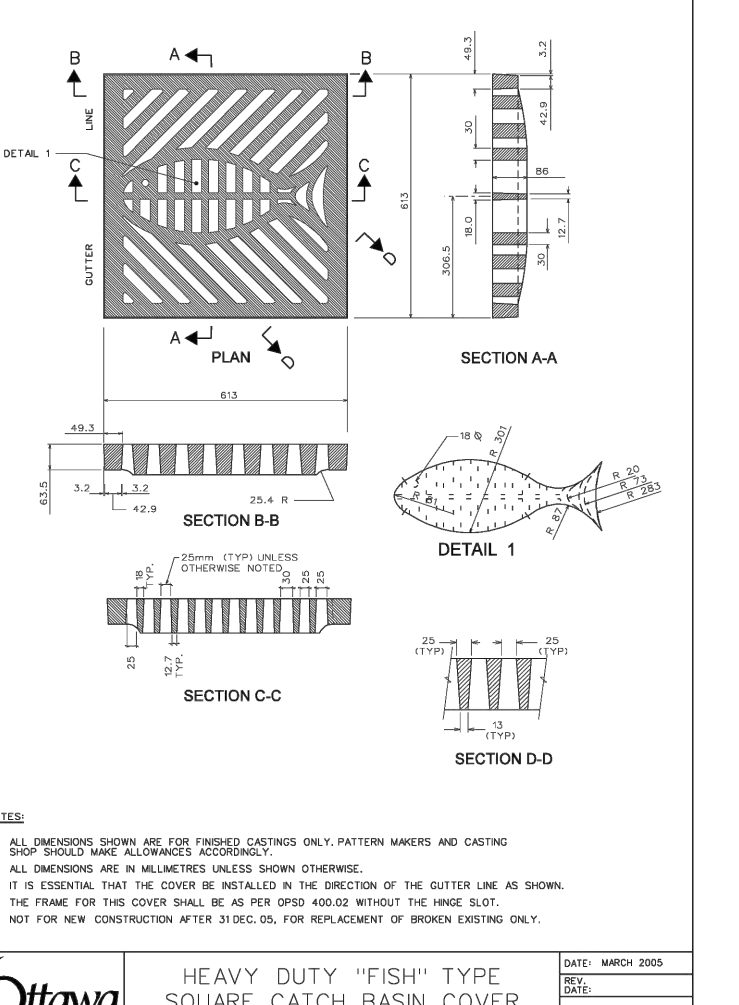
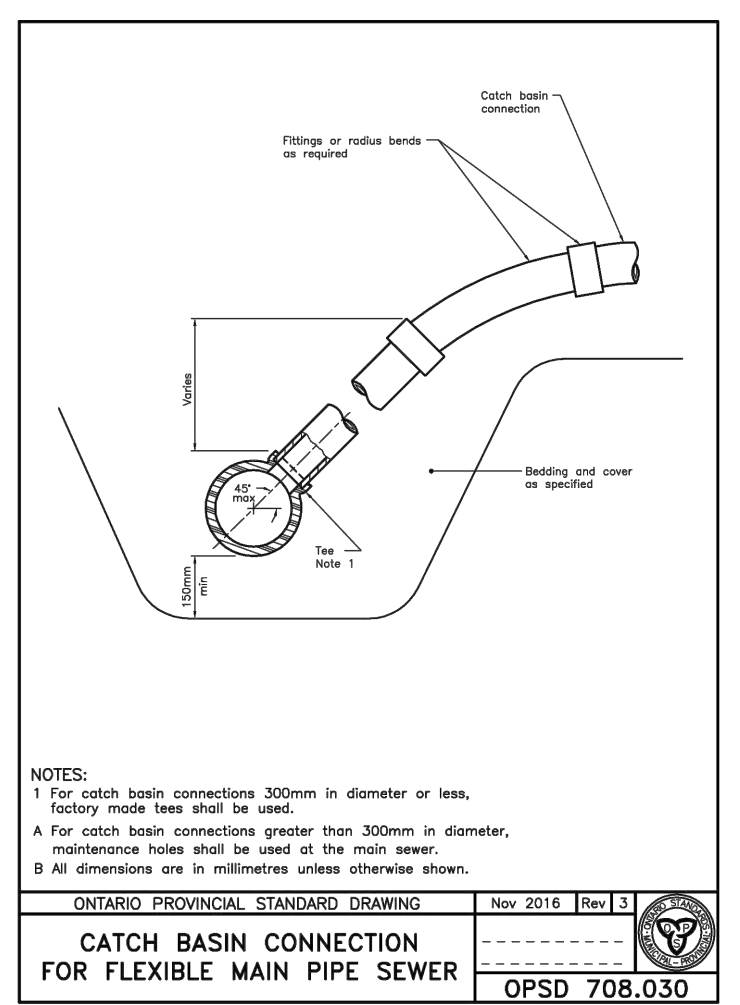
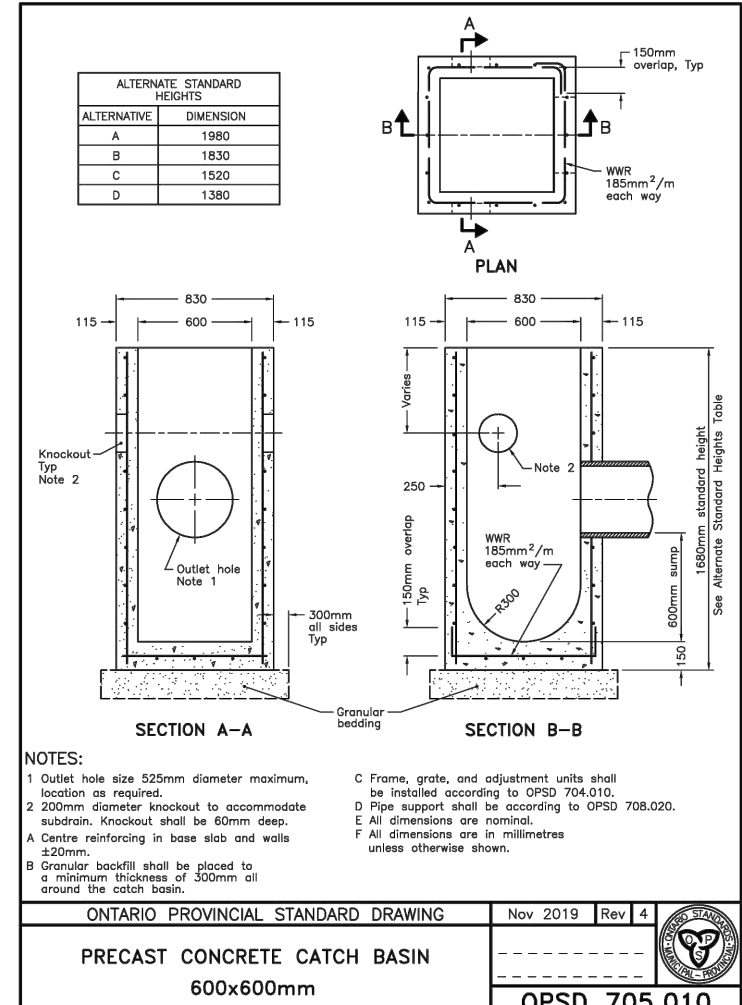
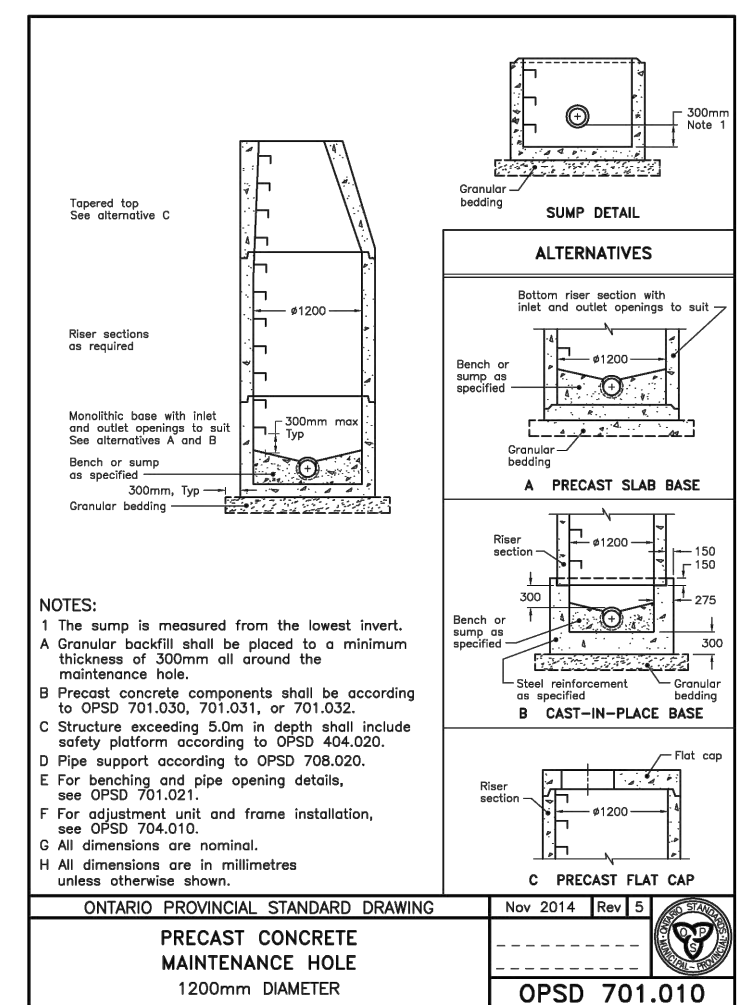
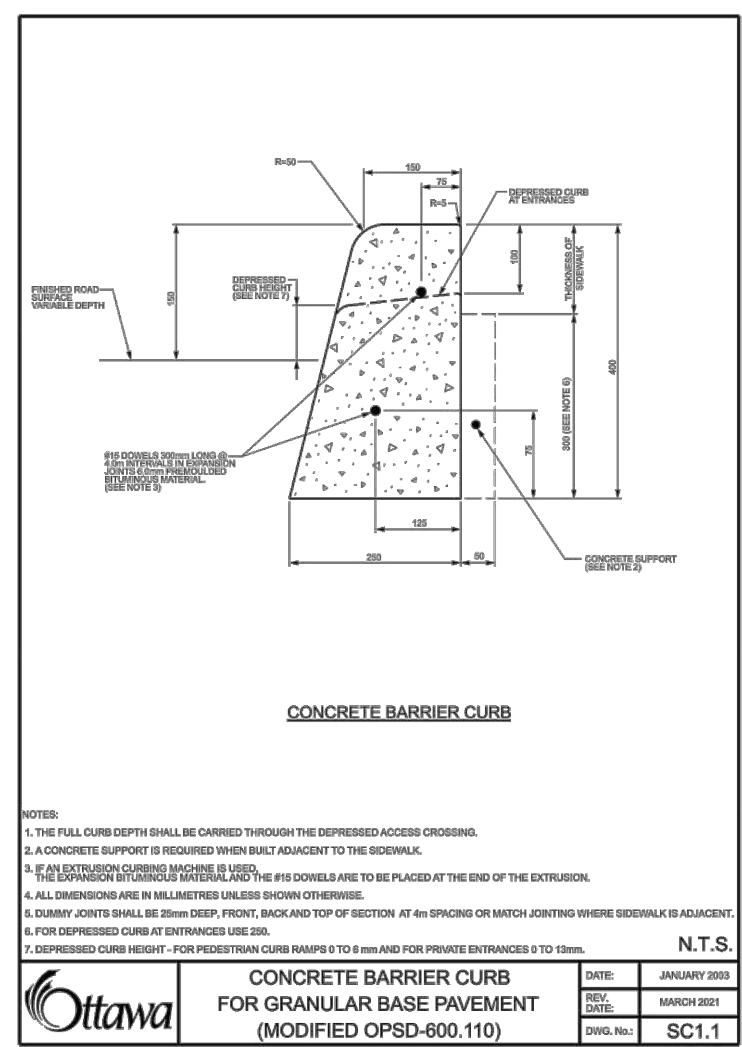
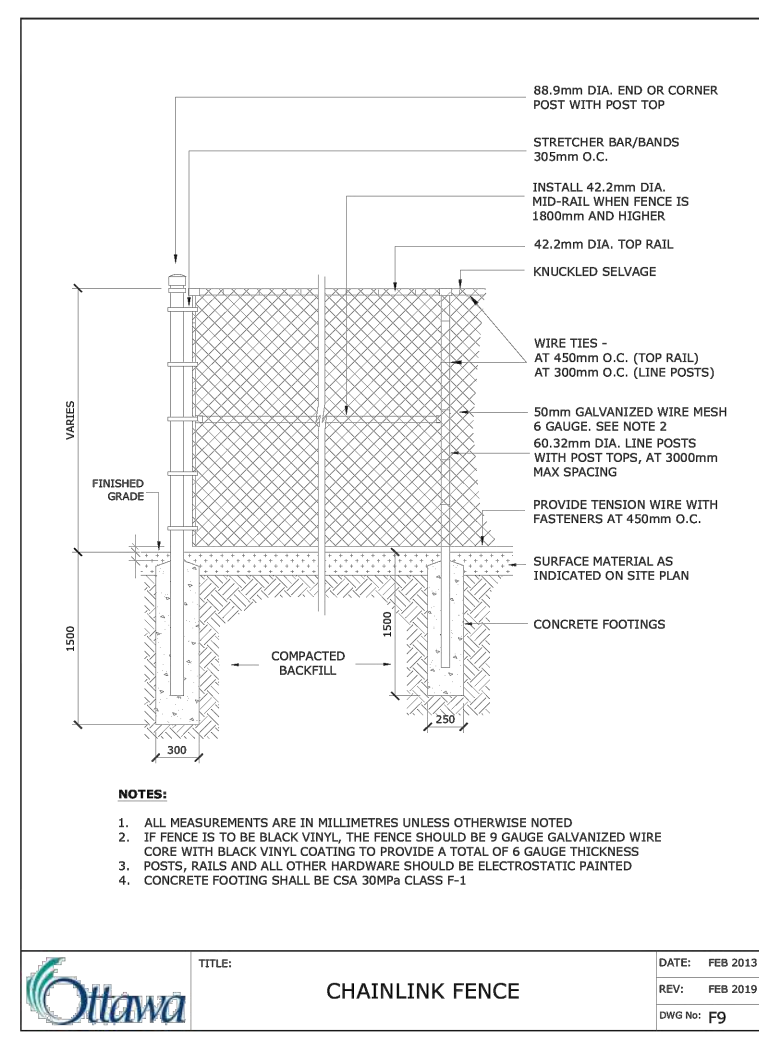
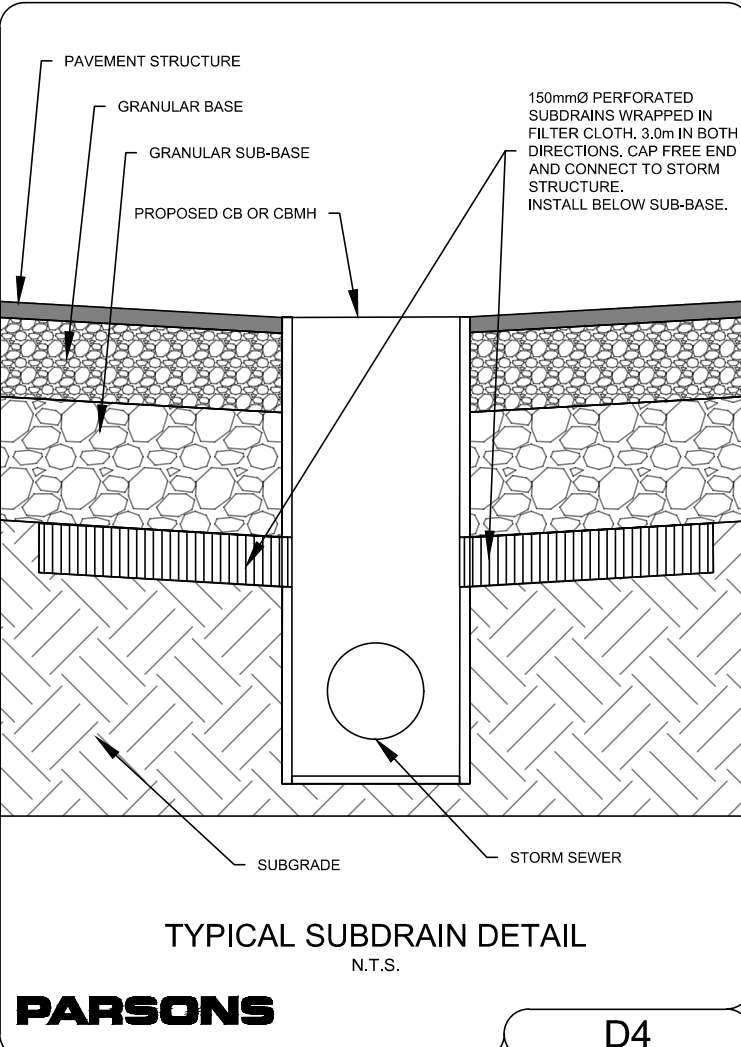
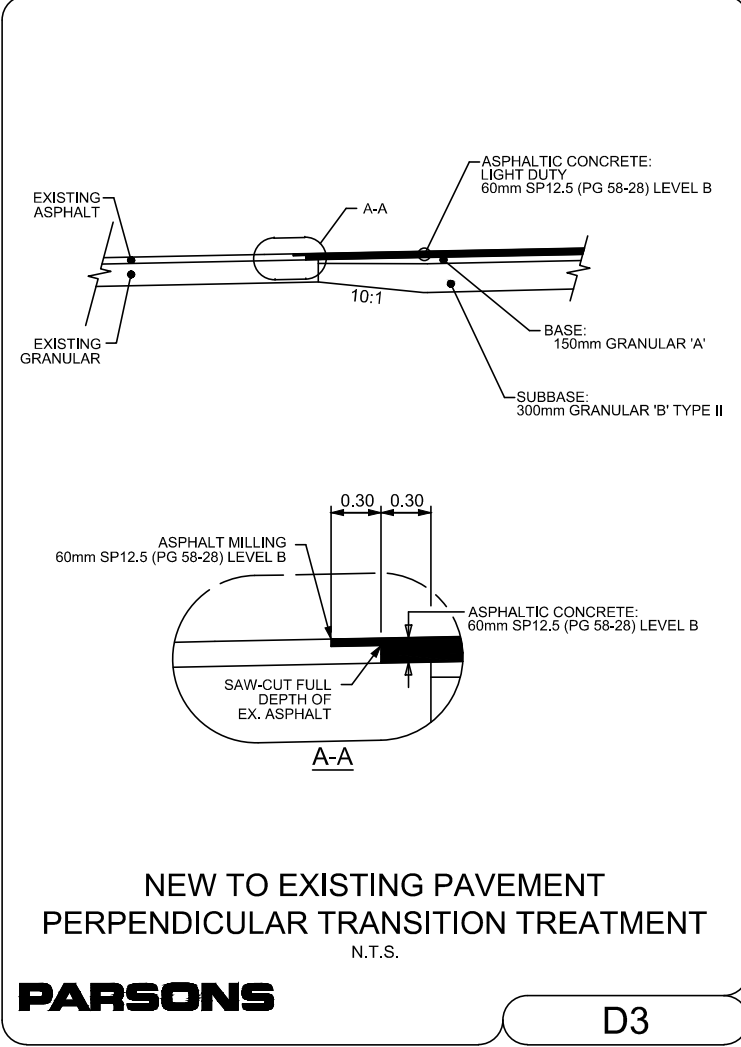
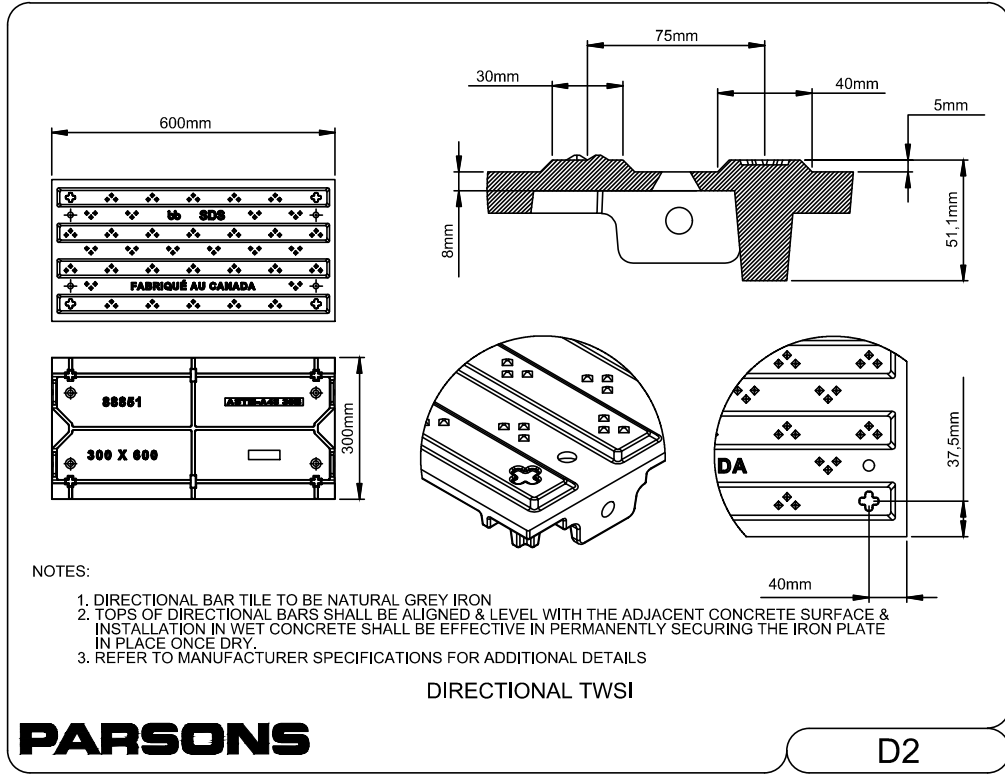
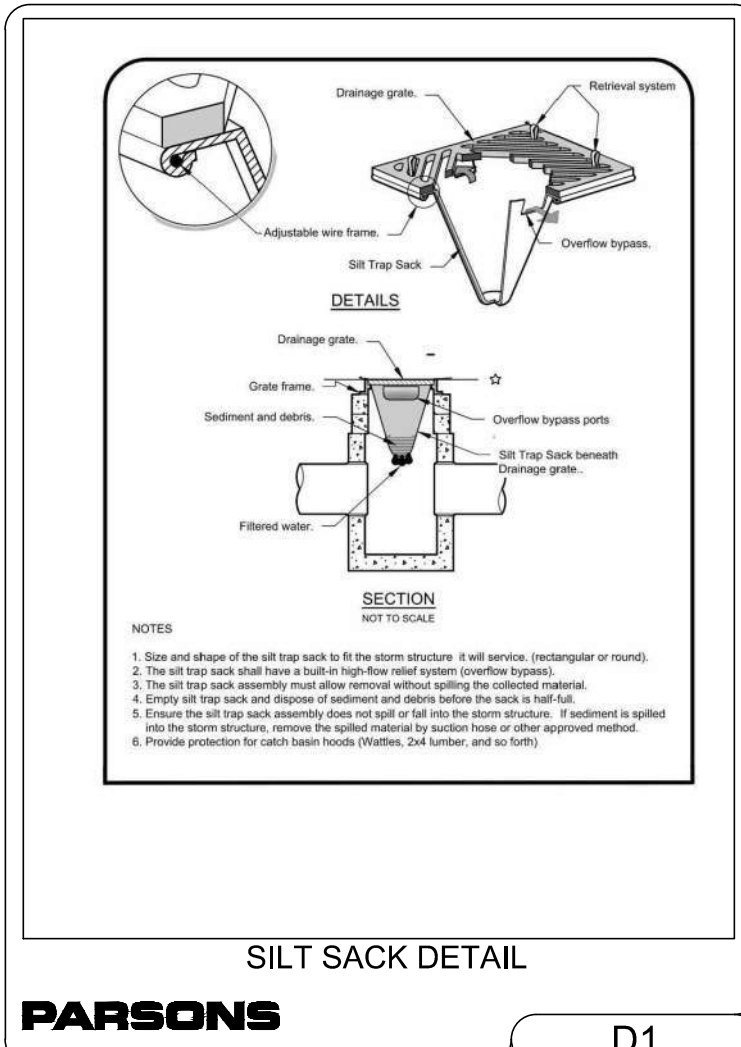
MATERIAL	LIGHT DUTY	HEAVY DUTY	COMPACTION
SURFACE LAYER : SP 12.5 (PG 58-28 LEVEL B)	60 mm	MATCH EXISTING	≥ 92%*
BASE LAYER : SP 19 (PG 58-28 LEVEL B)	-	MATCH EXISTING	≥ 92%*
GRANULAR BASE : OPSS GRANULAR A	150 mm	MATCH EXISTING	98%**
GRANULAR SUB-BASE : OPSS GRANULAR B TYPE II	300 mm	MATCH EXISTING	98%**

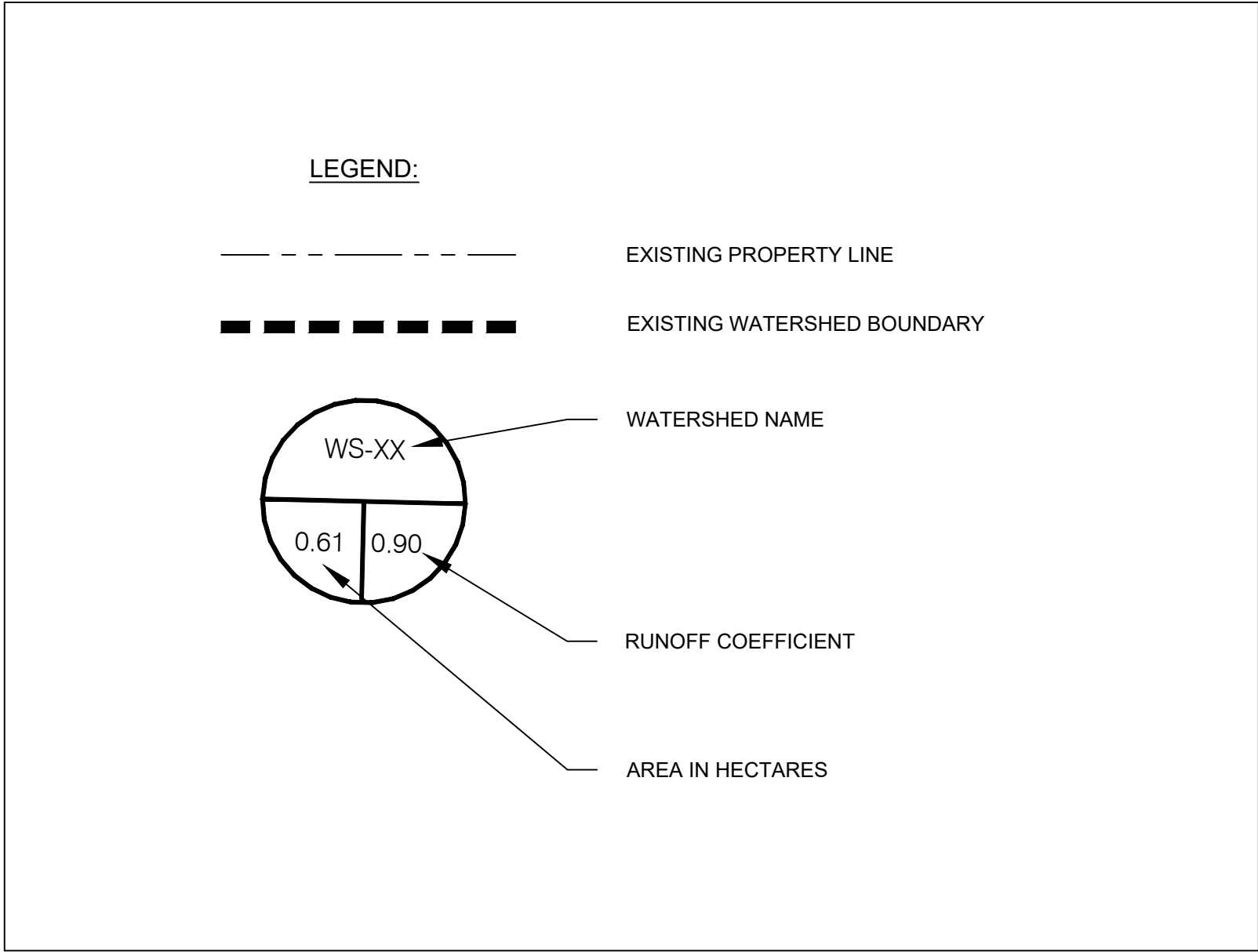
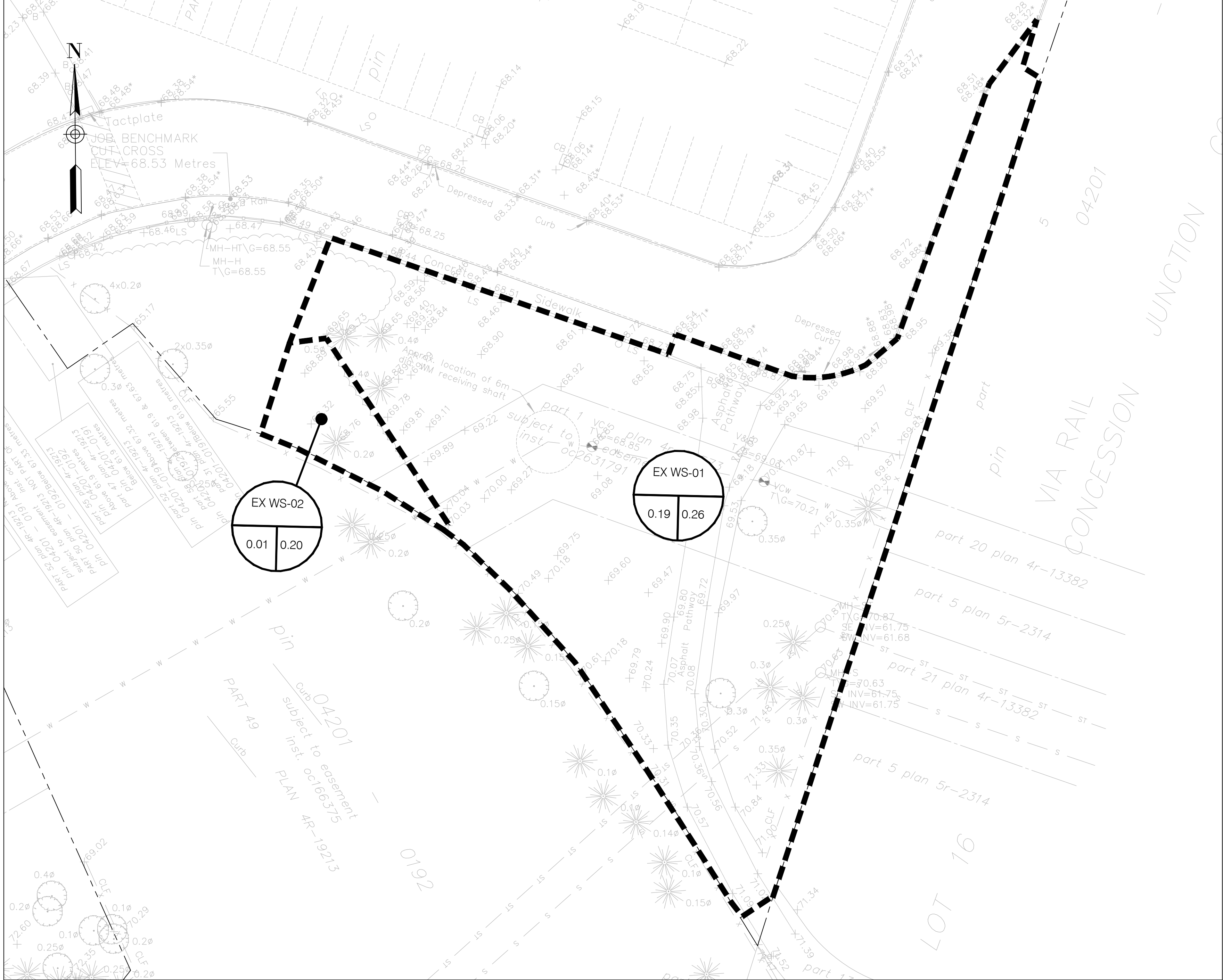
*MINIMUM PAVEMENT COMPACTION BASED ON MAXIMUM RELATIVE DENSITY, PER OPSS.MUNI 310

**OF THE STANDARD PROCTOR MAXIMUM DRY DENSITY

SOURCE: GEOTECHNICAL INVESTIGATION, PROPOSED NEW EMPLOYEE PARKING LOTS "C" AND "C1", THE OTTAWA HOSPITAL, RIVERSIDE CAMPUS, OTTAWA, ONTARIO. BY GEMTEC, DATED MARCH 13, 2025

Designed by:	BV	Datum 
Drawn by:	BV	
Approved by:	MT	





Surveyor

ANNIS, O'SULLIVAN, VOLLEBEKK LTD.
14 CONCOURSE GATE, SUITE 500
NEPEAN, ONTARIO, K2E 7S6

TOPOGRAPHIC INFORMATION & BENCHMARK

SURVEY COMPLETED BY ANNIS, O'SULLIVAN, VOLLEBEKK LTD. ON MARCH 21, 2024. ELEVATIONS SHOWN ARE GEODETIC AND ARE REFERRED TO THE CGVD28 GEODETIC DATUM, DERIVED FROM CONTROL MONUMENT NO. 019680274 HAVING AN ELEVATION OF 66.322m.

BOUNDARY INFORMATION WAS COMPILED FROM PLANS 4R-19213, 4R-35573 AND 4R-36051

JOB BENCHMARK

CUT CROSS ON SIDEWALK NEAR OVERPASS
ELEVATION = 68.53m

Client

The Ottawa Hospital | L'Hôpital d'Ottawa

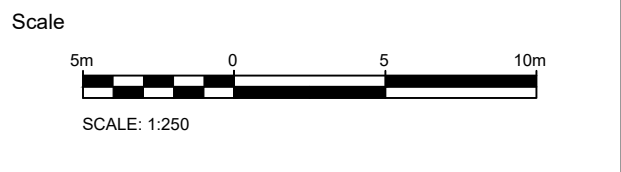
THE OTTAWA HOSPITAL
1053 CARLING AVENUE
OTTAWA, ONTARIO, K1Y 4E9
(613) 722-7000

PARSONS

1223 MICHAEL STREET, SUITE 100
GLOUCESTER, ONTARIO, K1J 7T2



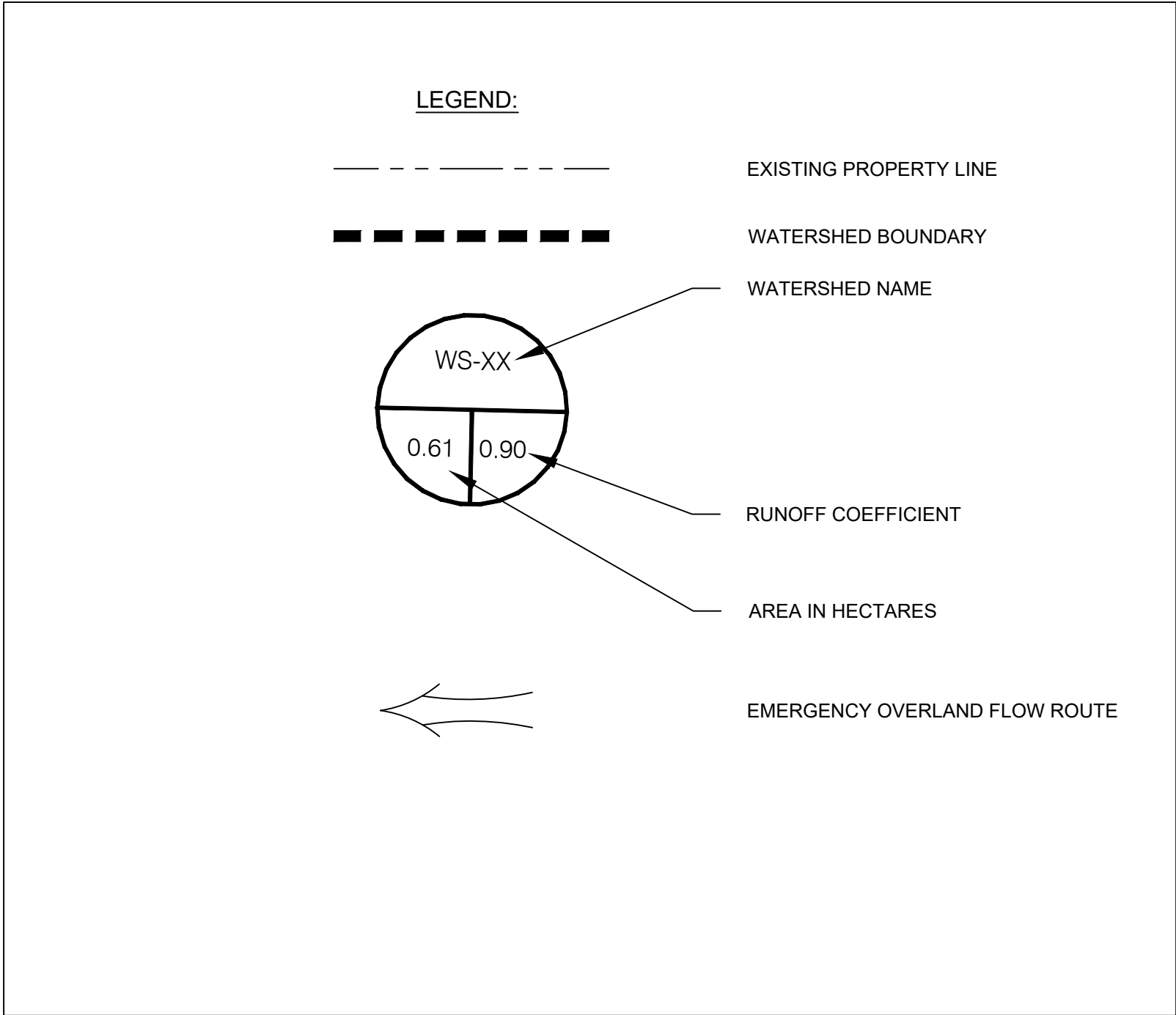
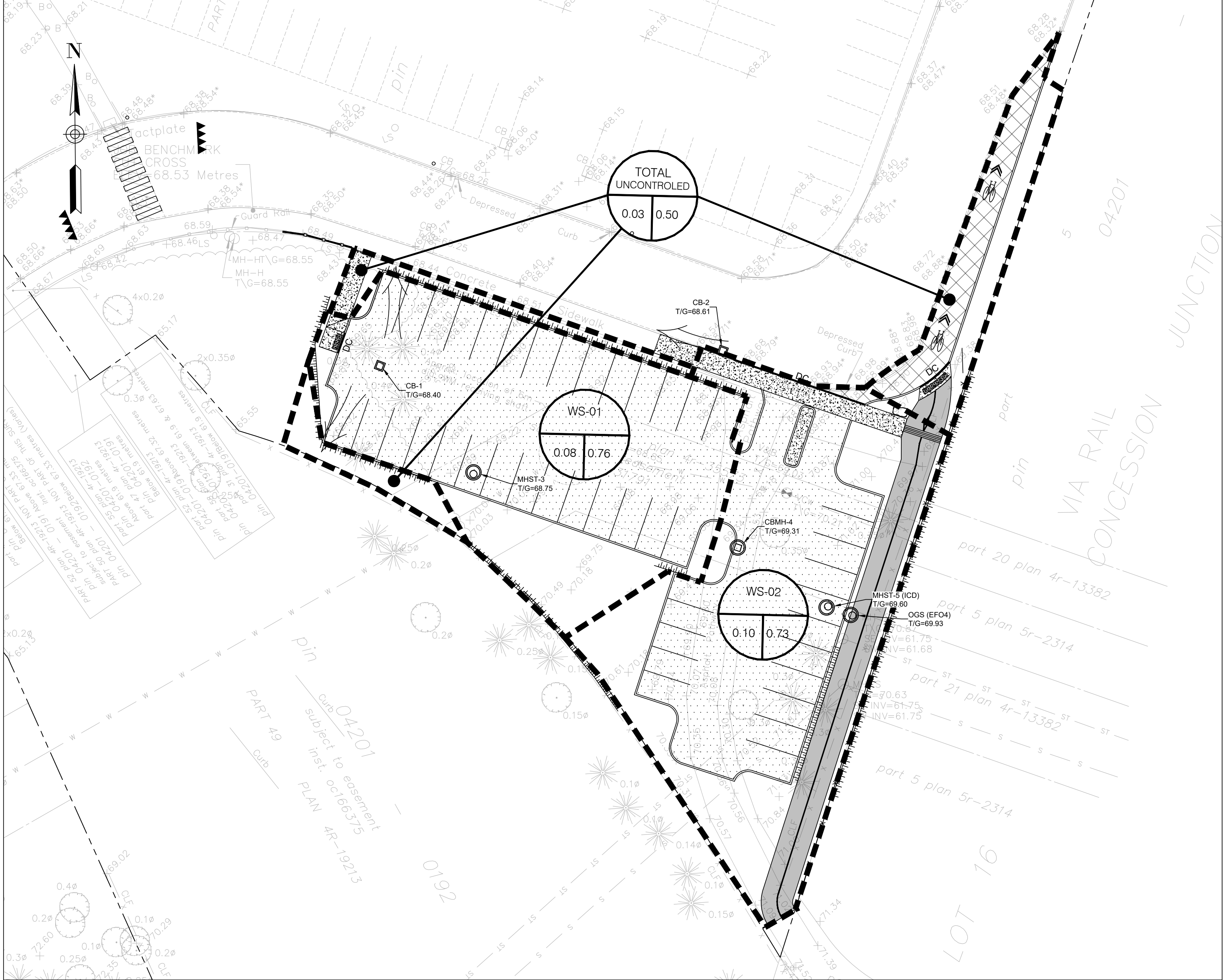
4	RE-ISSUED FOR SPA	BV	2025/05/15
3	RE-ISSUED FOR SPA	BV	2025/03/13
2	RE-ISSUED FOR SPA	BV	2025/01/17
1	ISSUED FOR SPA	BV	2024/11/08
No.	Revision	By	Date (yy/mm/dd)



Project Title

1967 RIVERSIDE DRIVE
RIVERSIDE CAMPUS
PARKING LOTS

Drawing Title		
PARKING LOT C PRE DEVELOPMENT DRAINAGE AREAS		
Designed by:	BV	Datum
Drawn by:	BV	
Approved by:	MT	
Project No.	479008	Drawing No.
		C105-C



Surveyor

ANNIS, O'SULLIVAN, VOLLEBEKK LTD.
14 CONOURSE GATE, SUITE 500
NEPEAN, ONTARIO, K2E 7S6

TOPOGRAPHIC INFORMATION & BENCHMARK
SURVEY COMPLETED BY ANNIS, O'SULLIVAN, VOLLEBEKK LTD. ON MARCH 21, 2024. ELEVATIONS SHOWN ARE GEODETIC AND ARE REFERRED TO THE CGVD28 GEODETIC DATUM, DERIVED FROM CONTROL MONUMENT NO. 019880274 HAVING AN ELEVATION OF 66.322m.

BOUNDARY INFORMATION WAS COMPILED FROM PLANS
4R-19213, 4R-35573 AND 4R-36051

JOB BENCHMARK
CUT CROSS ON SIDEWALK NEAR OVERPASS
ELEVATION = 66.53m

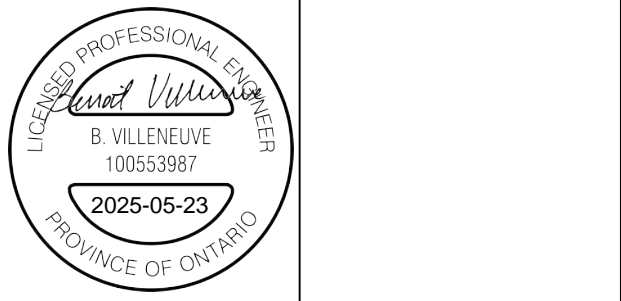
Client

The Ottawa Hospital | L'Hôpital d'Ottawa

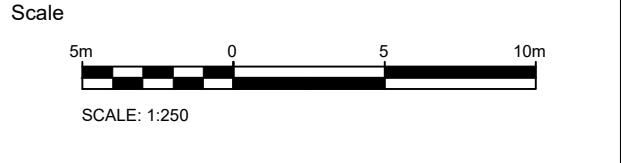
THE OTTAWA HOSPITAL
1053 CARLING AVENUE
OTTAWA, ONTARIO, K1Y 4E9
(613) 722-7000

PARSONS

1223 MICHAEL STREET, SUITE 100
GLOUCESTER, ONTARIO, K1J 7T2



4	RE-ISSUED FOR SPA	BV	2025/05/15
3	RE-ISSUED FOR SPA	BV	2025/03/13
2	RE-ISSUED FOR SPA	BV	2025/01/17
1	ISSUED FOR SPA	BV	2024/11/08
No.	Revision	By	Date (yy/mm/dd)



Project Title

**1967 RIVERSIDE DRIVE
RIVERSIDE CAMPUS
PARKING LOTS**

Drawing Title	
PARKING LOT C POST DEVELOPMENT DRAINAGE AREAS	
Designed by: BV	Datum
Drawn by: BV	
Approved by: MT	
Project No. 479008	Drawing No. C106-C