

IMAGE CONCEPTUELLE. LES SPECIFICATIONS DES PLANS ET DEVIS PEUVENT VARIER

En collaboration avec:

Architects	Civil	Surveyor	Planner
NEUF architect(e)s 630, boul. René-Lévesque W. 32th floor, Montreal, QC, H3B 1S6 T. 514.847.1117	EXP 1001, boul. De Maisonneuve W. suite 800, Montreal, QC, H3A 3C8 T. 514.931.1080	Annis, O'Sullivan, Vollebekk Ltd. 14 Concourse Gate, Ottawa, ON, K1Z 8P5 T. 613.727.0850	Fotenn Planning and Design 420 O'Connor Street, Ottawa, ON, K2P 0P4 T. 613.730.5709

CLIENT: **VUZE CONSTRUCTION**

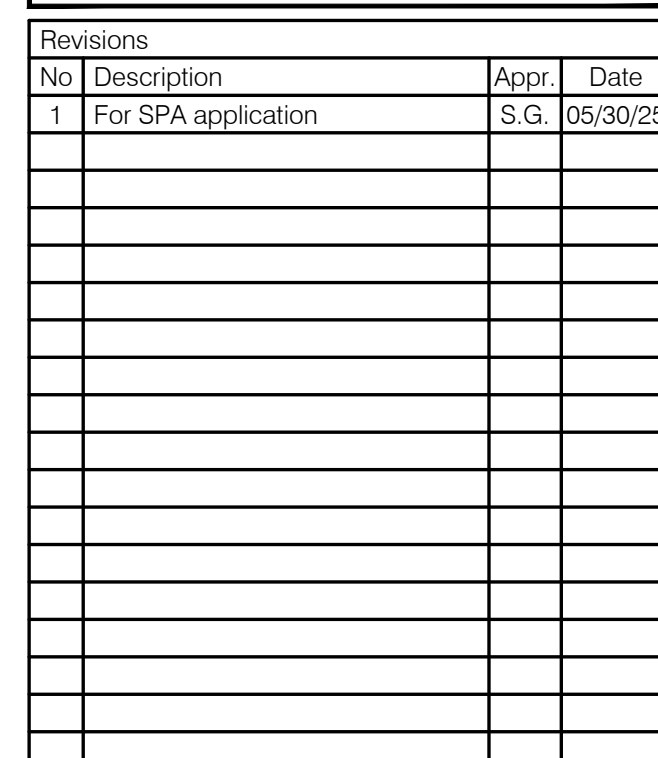
Laperriere Av 1600,
Ottawa, ON, K1Z 8P5
T. 819.664.4195

PROJECT: **1015 Tweddle Road**

LANDSCAPE ARCHITECTURE

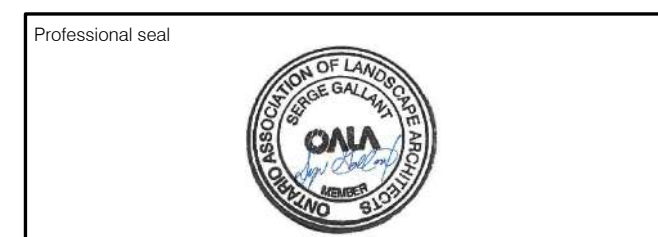
Landscape architecture | For SPA application| 2025-05-30

PLANCHE	TITRE	SCALE
AP-10	LANDSCAPE PLAN	1:250
AP-11	PROJECTED CANOPY PLAN	1:250
AP-12	KEY PLAN	1:250
AP-20	DESCRIPTION PLAN	1:100
AP-21	DESCRIPTION PLAN	1:100
AP-22	DESCRIPTION PLAN	1:100
AP-23	DESCRIPTION PLAN	1:100
AP-24	DESCRIPTION PLAN	1:100
AP-30	PLANTING PLAN	1:100
AP-31	PLANTING PLAN	1:100
AP-32	PLANTING PLAN	1:100
AP-33	PLANTING PLAN	1:100
AP-34	PLANTING PLAN	1:100
AP-40	CONSTRUCTION DETAILS	SCALE INDICATED
AP-41	CONSTRUCTION DETAILS	SCALE INDICATED
AP-42	CONSTRUCTION DETAILS	SCALE INDICATED
AP-43	CONSTRUCTION DETAILS	SCALE INDICATED
AP-44	PLANTING DETAILS	SCALE INDICATED
AP-60	SECTIONS/ELEVATIONS	1:100
AP-51	RENDERINGS	NO SCALE



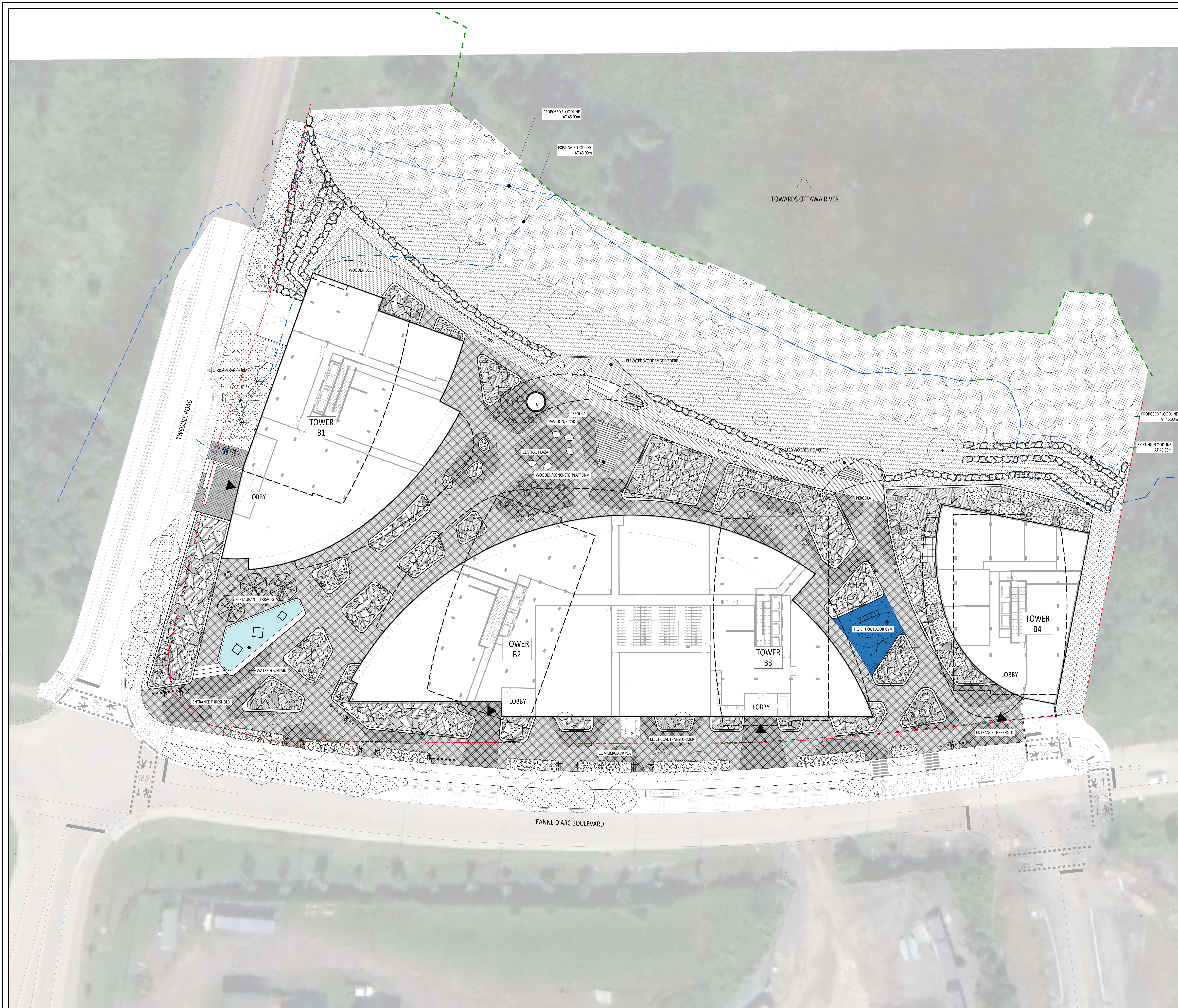
Notes:

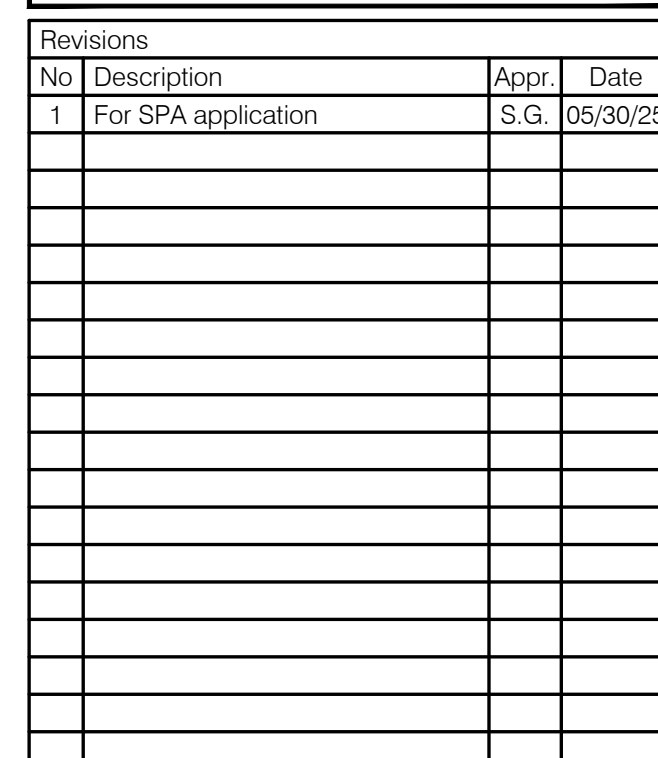
- 1- The Contractor must verify all site existing conditions before beginning the work and inform the Project Director of any errors, omissions or contradictions.
- 2- Existing grades indicated on the plan come from the survey provided by the owner.
- 3- The Contractor must not cut down any existing vegetation without the approval of the Project Director.
- 4- Implementation of the works on site must be approved by the Project Director.
- 5- The Contractor must use the CAD file for implementation of all work.
- 6- The contractor must verify the amounts specified in the schedule and notify the landscape architect of any errors, omissions or contradictions before the close of the bid.



1:250

21-695





LEGEND

- Property line
- Limit of work
- Top of slope line
- Bottom of slope line
- Proposed deciduous tree and shrub
- Proposed coniferous tree and shrub
- Projected Canopy

SEEDING

- Mix 1 - Floodline zone
 Andropogon gerardi, Carex gracilis, Carex canadensis, Carex vulpocarpa, Elymus canadensis, Glycyrrhiza canadensis, Juncus effusus, Sorghum arifolius, Verbena hastata, Iris versicolor, Chamaecyparis, Asclepias tuberosa
- Mix 2 - Resiliding zone
 Andropogon gerardi, Carex larida, Carex vulpocarpa, Elymus canadensis, Achillea millefolium, Asclepias, Ios
- Mix 3 - Pollinator wildflower mix
 Achillea millefolium, Asclepias syriaca, Astragalus canadensis, Chamaenerion angustifolium, Helopsis heterophylla, Monarda fistulosa, Dianthus barbatus, Solidago nemoralis, Symphyotrichum confertifolium, Asclepias syriaca
- Grass (turf)
- Perennials
- Paver pattern n.1
- Paver Pattern n.2
- Wooden deck surface
- Light fixtures, sight lighting plan
- Parasol
- Outdoor dining tables
- Bike Rack
- Water Fountain Sculptures
- Wooden seat mounted on concrete wall
- Pebble shaped seat
- Pebble shaped planter
- Boulder

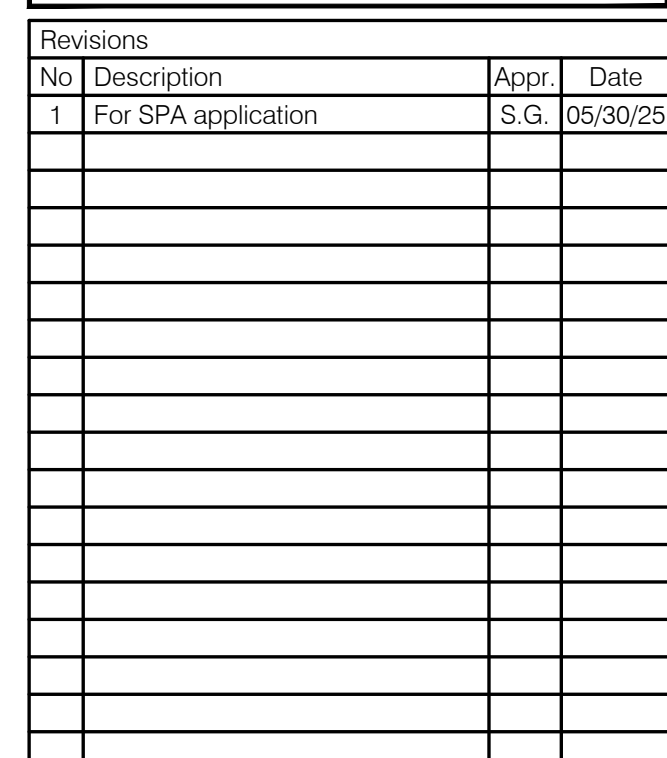
- 1- The Contractor must verify all site existing conditions before beginning the work and inform the Project Director of any errors, omissions or contradictions.
- 2- Existing grades indicated on the plan come from the survey provided by the owner.
- 3- The Contractor must not cut down any existing vegetation without the approval of the Project Director.
- 4- Implantation of the works on site must be approved by the Project Director.
- 5- The Contractor must use the CAD file for implantation of all work.
- 6- The contractor must verify the amounts specified in the schedule and notify the landscape architect of any errors, omissions or contradictions before the close of the bid.



1:250

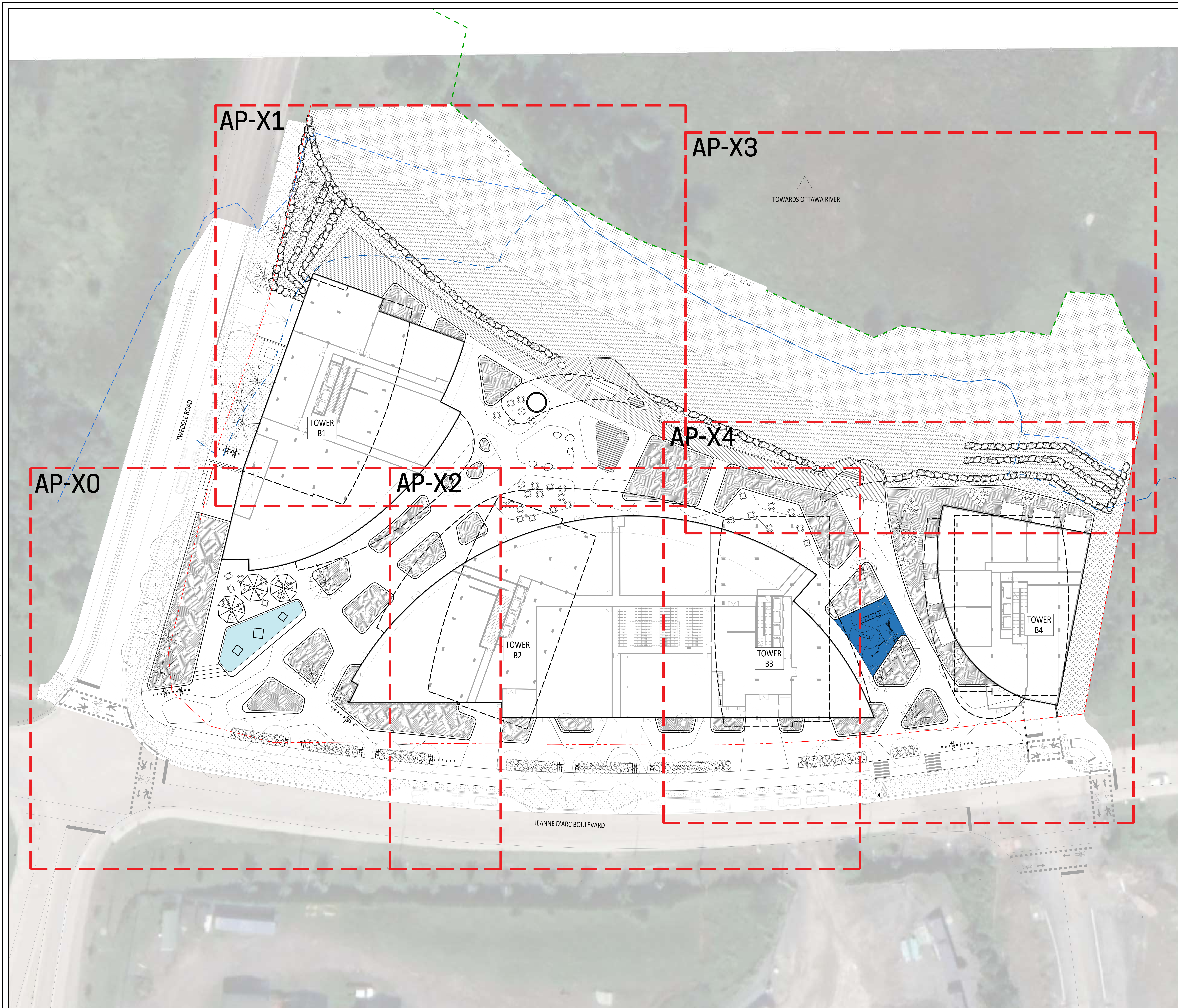
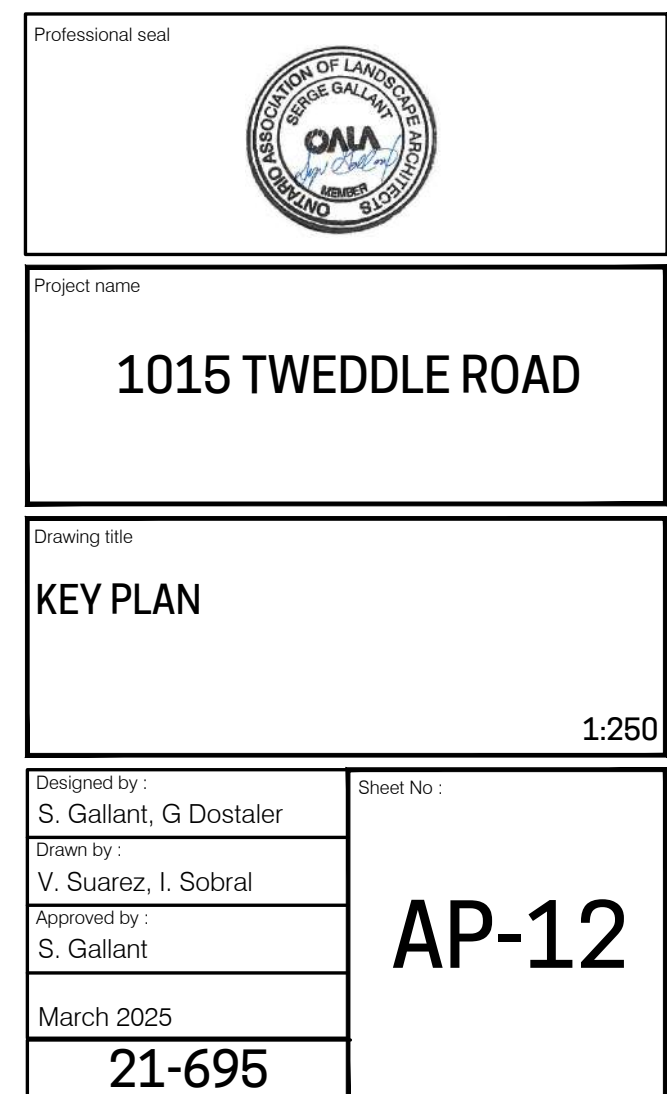
AP-11

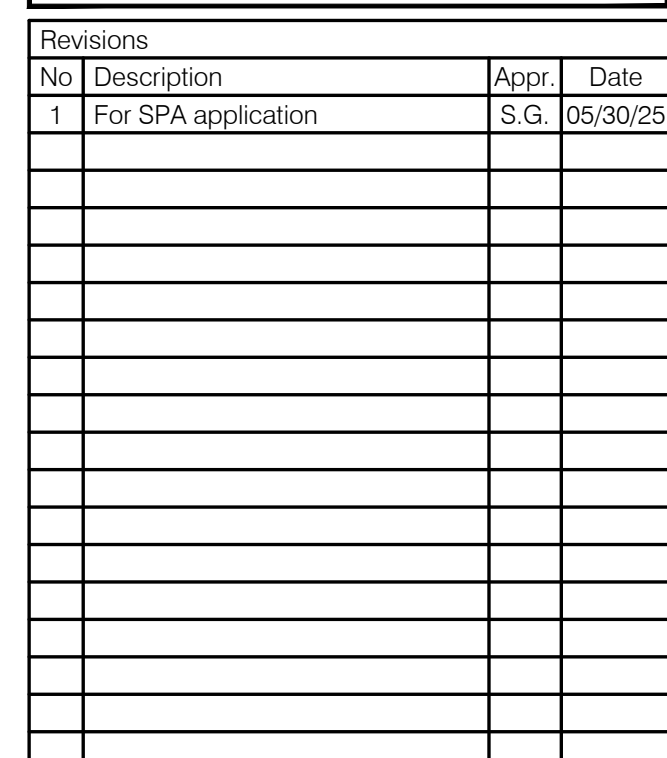
21-695



Notes :

- 1- The Contractor must verify all site existing conditions before beginning the work and inform the Project Director of any errors, omissions or contradictions.
- 2- Existing grades indicated on the plan come from the survey provided by the owner.
- 3- The Contractor must not cut down any existing vegetation without the approval of the Project Director.
- 4- Implementation of the works on site must be approved by the Project Director.
- 5- The Contractor must use the CAD file for implementation of the work.
- 6- The contractor must verify the amounts specified in the schedule and notify the landscape architect of any errors, omissions or contradictions before the close of the bid.





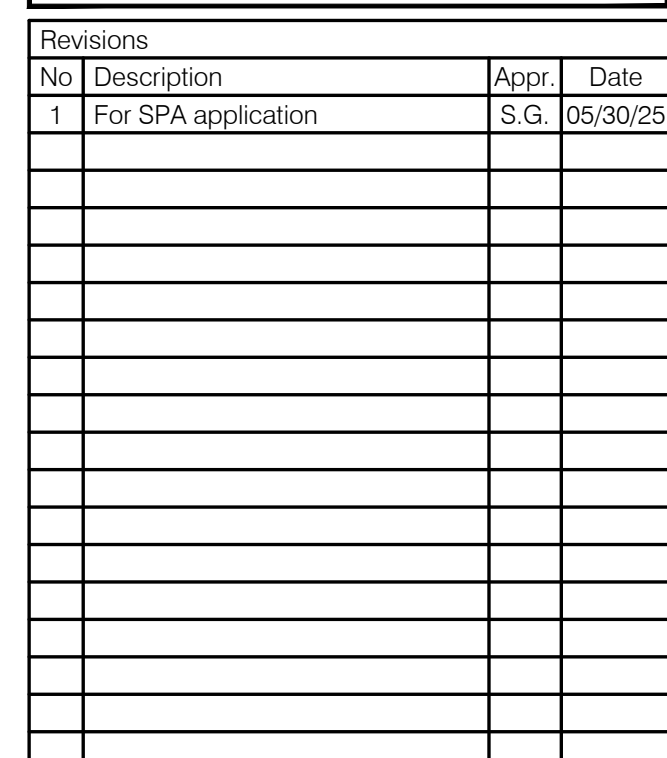
LEGEND	
	Property line
	Limit of work
	Proposed elevation
TW	Top of wall
HB	Top of curb
HE	Top of stairs
HT	Top of slope
D	Top of drain
BW	Bottom of wall
BB	Bottom of curb
BE	Bottom of stairs
BT	Bottom of slope
PH	High point
	Top of slope line
	Bottom of slope line
	Light fixture, refer to lighting plan
	Vegetation feature (see planting plan) Tree and shrub planting pit, minimum depth 700 mm
	Vegetation feature (see planting plan) Planting pit for shrubs & perennials, minimum depth 450 mm
	Vegetation feature (see planting plan) Planting pit for seeding and sod, minimum depth 150 mm
List of details on plans	
Key	Description
Surfaces	
01a	Paver
10	Power on structural slab
11	Subsue synthetic surface
13	River rock strip edges (barride de parapete)
Stairs, walls & precast concrete elements	
11	Concrete stairs
12	Precast concrete step wall w/ planter
13	Precast concrete planter
14	Precast concrete pebble shaped seat
15	Precast concrete pebble shaped planter
Equipment & site furniture	
20	Black box
21	Waste and recycling containers
22	Parasol
23	Traffic equipment
Water features	
30	Water fountain
Metal structures	
40	Handrail
41	Pergola
42	Bicycle/rack
Wood structures	
50	Deck surface
51	Stairs
52	Seating mounted on concrete w/ planter
53	Seating mounted on concrete planter

- 1- The Contractor must verify all site existing conditions before beginning the work and inform the Project Director of any errors, omissions or contradictions.
- 2- Existing grades indicated on the plan come from the survey provided by the owner.
- 3- The Contractor must not cut down any existing vegetation without the approval of the Project Director.
- 4- Implementation of the works on site must be approved by the Project Director.
- 5- The Contractor must use the CAD file for implementation of all work.
- 6- The contractor must verify the amounts specified in the schedule and notify the landscape architect of any errors, omissions or contradictions before the close of the bid.



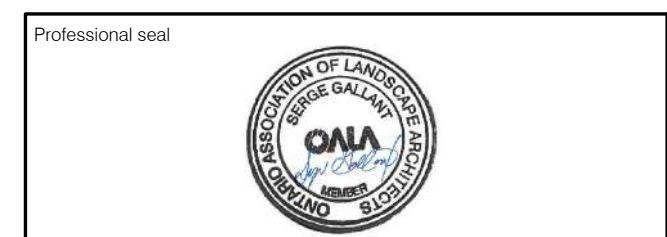
1:100

21-695



LEGEND	
	Property line
	Limit of work
	Proposed elevation
TW	Top of wall
HB	Top of curb
HE	Top of stairs
HT	Top of slope
D	Top of drain
BW	Bottom of wall
BB	Bottom of curb
BE	Bottom of stairs
BT	Bottom of slope
PH	High point
	Top of slope line
	Bottom of slope line
	Light fixture, refer to lighting plan
	Vegetation feature (see planting plan) Tree and shrub planting pit, minimum depth 700 mm
	Vegetation feature (see planting plan) Planting pit for shrubs & perennials, minimum depth 450 mm
	Vegetation feature (see planting plan) Planting pit for seeding and sod, minimum depth 150 mm
List of details on plans	
Key	Description
Surfaces	
01a	Paver
10	Power on structural slab
11	Subsue synthetic surface
12	River rock strip edges (barride de parapete)
Stairs, walls & precast concrete elements	
11	Concrete stairs
12	Precast concrete steel wall & planter
13	Precast concrete planter
14	Precast concrete pebble shaped seat
15	Precast concrete pebble shaped planter
Equipment & site furniture	
20	Bike rack
21	Waste and recycling containers
22	Parasol
23	Traffic equipment
Water features	
30	Water fountain
Metal structures	
40	Handrail
41	Pergola
42	Bicycle/rack
Wood structures	
50	Deck surface
51	Stairs
52	Seating mounted on concrete wall planter
53	Seating mounted on concrete planter

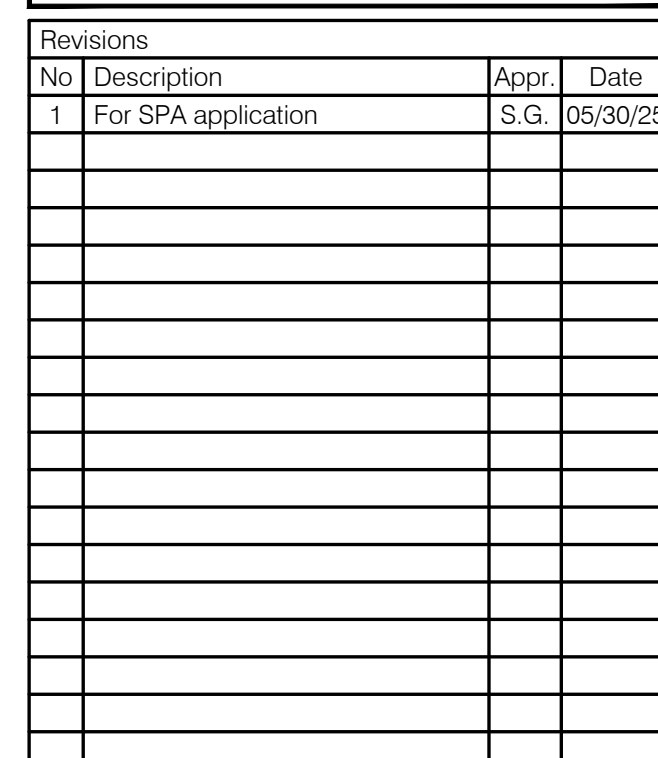
- 1- The Contractor must verify all site existing conditions before beginning the work and inform the Project Director of any errors, omissions or contradictions.
- 2- Existing grades indicated on the plan come from the survey provided by the owner.
- 3- The Contractor must not cut down any existing vegetation without the approval of the Project Director.
- 4- Implantation of the works on site must be approved by the Project Director.
- 5- The Contractor must use the CAD file for implantation of all work.
- 6- The contractor must verify the amounts specified in the schedule and notify the landscape architect of any errors, omissions or contradictions before the close of the bid.



1015 TWEDDLE ROAD

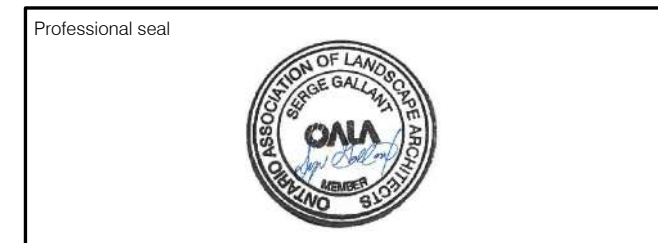
DESCRIPTION PLAN

Designed by : S. Gallant, G Dostaler	Sheet No : AP-22
Drawn by : V. Suarez, I. Sobral	
Approved by : S. Gallant	
March 2025 21-695	



Notes :

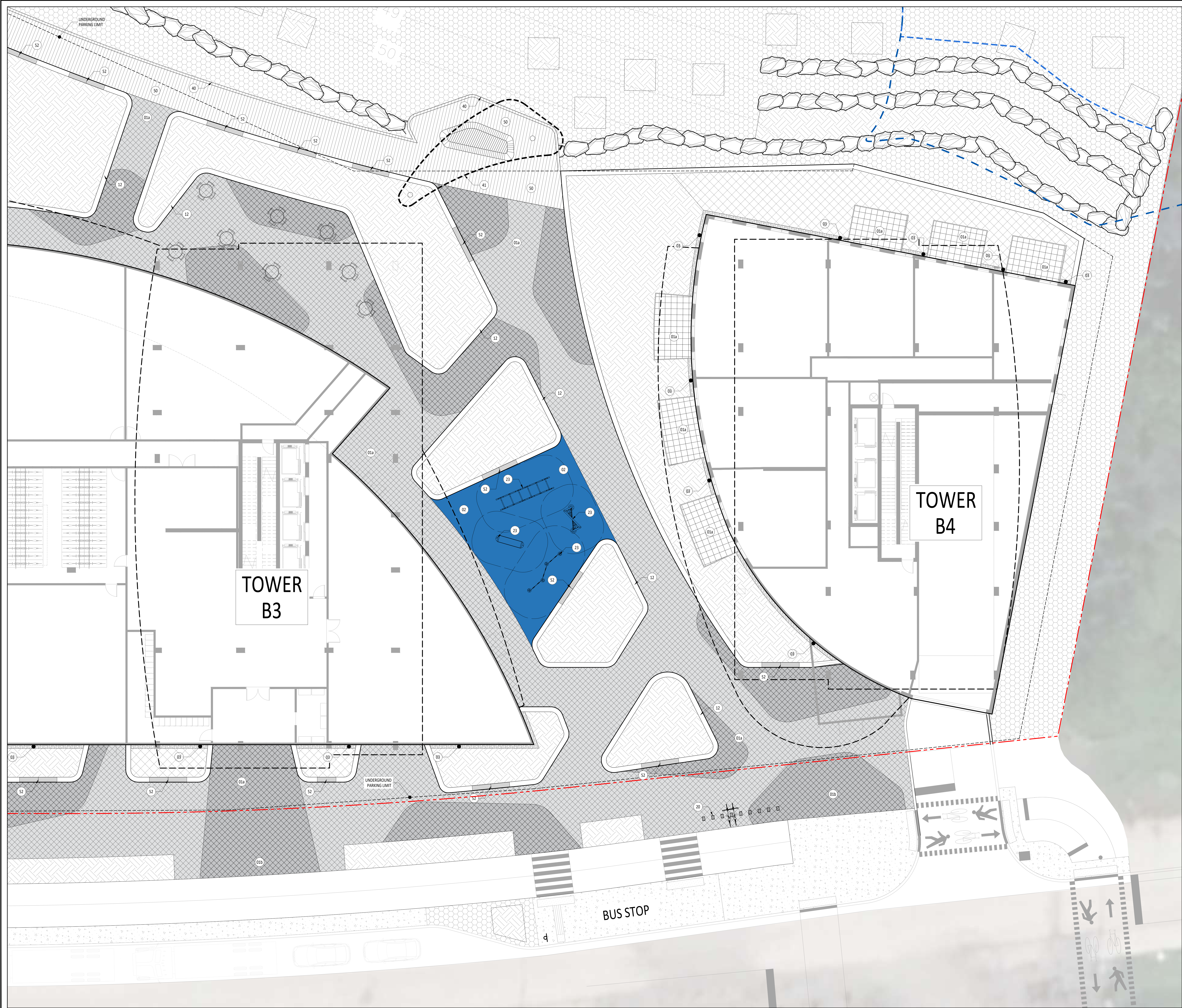
- 1- The Contractor must verify all site existing conditions before beginning the work and inform the Project Director of any errors, omissions or contradictions.
- 2- Existing grades indicated on the plan come from the survey provided by the owner.
- 3- The Contractor must not cut down any existing vegetation without the approval of the Project Director.
- 4- Implantation of the works on site must be approved by the Project Director.
- 5- The Contractor must use the CAD file for implantation of all works.
- 6- The contractor must verify the amounts specified in the schedule and notify the landscape architect of any errors, omissions or contradictions before the close of the bid.



Drawing title

DESCRIPTION PLAN

[illegible]



LEGEND

Property line
Limit of work
Proposed elevation

TW Top of wall
HB Top of curb
HE Top of stairs
HT Top of slope
D Top of drain

BW Bottom of wall
BB Bottom of curb
BE Bottom of stairs
BT Bottom of slope
PH High point

Top of slope line
Bottom of slope line

Light fixture, refer to lighting plan

Vegetation feature (see planting plan)
Tree and shrub planting pit, minimum depth 700 mm

Vegetation feature (see planting plan)
Planting pit for shrubs & perennials, minimum depth 450 mm

Vegetation feature (see planting plan)
Planting soil for seeding and sod, minimum depth 150 mm

List of details on plans

Key Description

Surfaces

01a Paver
01b Paver on structural slab
02 Rubber synthetic surface
03 River rock strip edge (bande de propreté)

Stairs, walls & precast concrete elements

11 Concrete stairs
12 Precast concrete seat wall & planter
13 Precast concrete platform
14 Precast concrete pebble shaped seat
15 Precast concrete pebble shaped planter

Equipment & side furniture

20 Bike Rack
21 Waste and recycling containers
22 Pallet
23 Trailfit equipment

Water features

30 Water fountain

Metal structures

40 Handrail
41 Pergola
42 Pavilion/Wood

Wood structures

50 Deck surface
51 Stone
52 Seating mounted on concrete wall planter
53 Seating mounted on concrete platform

Notes :

- The Contractor must verify all site existing conditions before beginning the work and inform the Project Director of any errors, omissions or contradictions.
- Existing grades indicated on the plan come from the survey provided by the owner.
- The Contractor must not cut down any existing vegetation without the approval of the Project Director.
- Implementation of the works on site must be approved by the Project Director.
- The Contractor must use the CAD file for implementation of all work.
- The contractor must verify the amounts specified in the schedule and notify the landscape architect of any errors, omissions or contradictions before the close of the bid.

PROJET PAYSAGE

Professional seal

Project name
1015 TWEDDLE ROAD

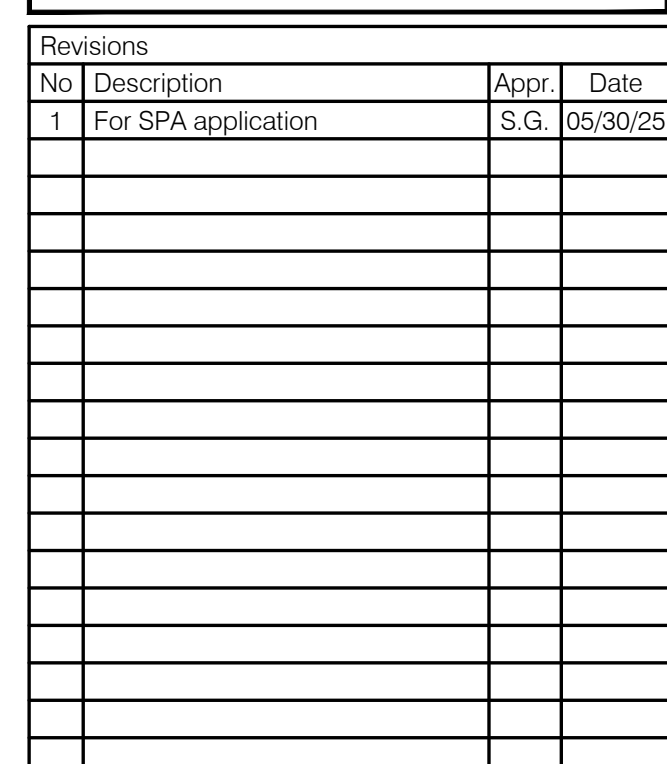
Drawing title
DESCRIPTION PLAN

Scale
1:100

Designed by
S. Gallant, G. Dostaler
Drawn by
V. Suarez, I. Sobral
Approved by
S. Gallant
March 2025

Client No.
AP-24

21-695



LEGEND	
	Property line
	Limit of work
	Proposed deciduous tree and shrub
	Proposed coniferous tree and shrub
	Grass (soil)
SEEDING	
	Mx 1 Floodline zone Andropogon gerardii, Callunastrum canadensis, Corylus americana, Erythraea yuccifolia, Erythronium americanum, Galium aparine, Veronica hastata, Iris versicolor, Thalictrum glabra, Asclepias incarnata
	Mx 2 Rerinding zone Andropogon gerardii, Carex lurida, Carex ripoides, Elymus canadensis, Achillea millefolium, Agrostis sp., Symphyotrichum confertiflorum, Asclepias syriaca
	Mx 3 Pollinator wildflower mix Achillea millefolium, Asclepias syriaca, Astragalus canadensis, Oenothera lutea, Nepeta haterodoxia, Salvia nemorosa, Geranium heinrichi, Soldado-canadensis, Symphyotrichum confertiflorum
PERENNIALS	Note: All perennials in this area are natives to Ontario.
FERNS	
	Dryopteris bulbifera (bulb fern), 11 pot.
	Dryopteris marginalis (marginal shield fern), 11 pot.
GRASSES	
	Sporobolus heterostachys (prairie dropseed), 11 pot.
	Deschampsia flexuosa (weavy hair grass), 11 pot.
	Carex eburnea (ivory sedge), 11 pot.
FLOWERING PERENNIALS	
	Allium cernuum (rooding onion), 11 pot.
	Lyrichia divaricata (white wood aster), 11 pot.
	Anemone canadensis (Canada anemone), 11 pot.
	Taraxacum officinale (heart-leaved daisy), 11 pot.
	Coreopsis lanceolata (lanceleaf coreopsis), 11 pot.
	Verbena stricta (ironwreath veranai), 11 pot.
	Anaphalis margaritacea (pearly everlasting), 11 pot.
	Geum triflorum (prairie smoke), 11 pot.
	Geranium maculatum (wild geranium), 11 pot.

[illegible]

- 1- The Contractor must verify all site existing conditions before beginning the work and inform the Project Director of any errors, omissions or contradictions.
- 2- Existing grades indicated on the plan come from the survey provided by the owner.
- 3- The Contractor must not cut down any existing vegetation without the approval of the Project Director.
- 4- Implantation of the works on site must be approved by the Project Director.
- 5- The Contractor must use the CAD file for implantation of all work.
- 6- The contractor must verify the amounts specified in the schedule and notify the landscape architect of any errors, omissions or contradictions before the close of the bid.



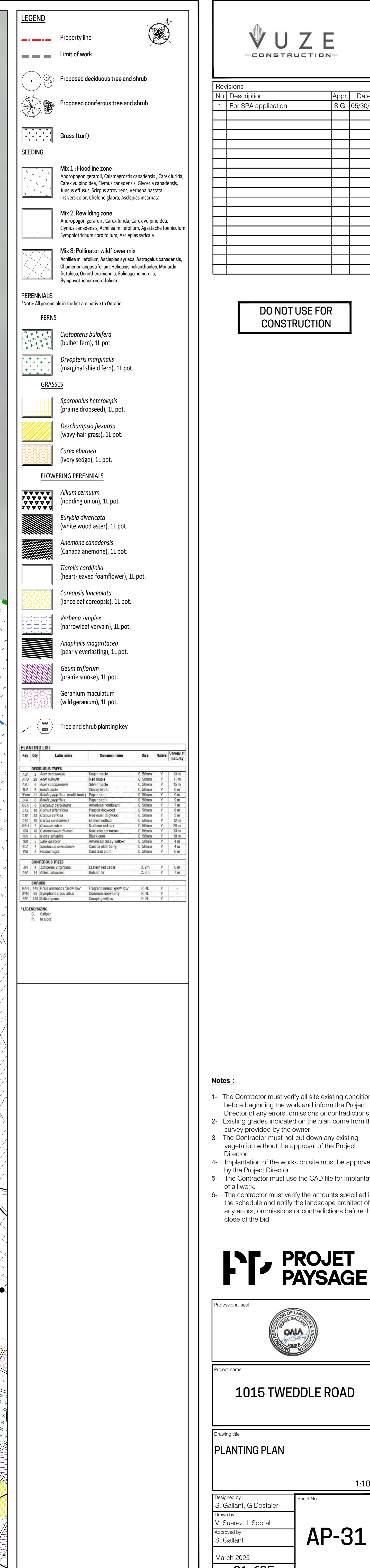
PLANTING PLAN

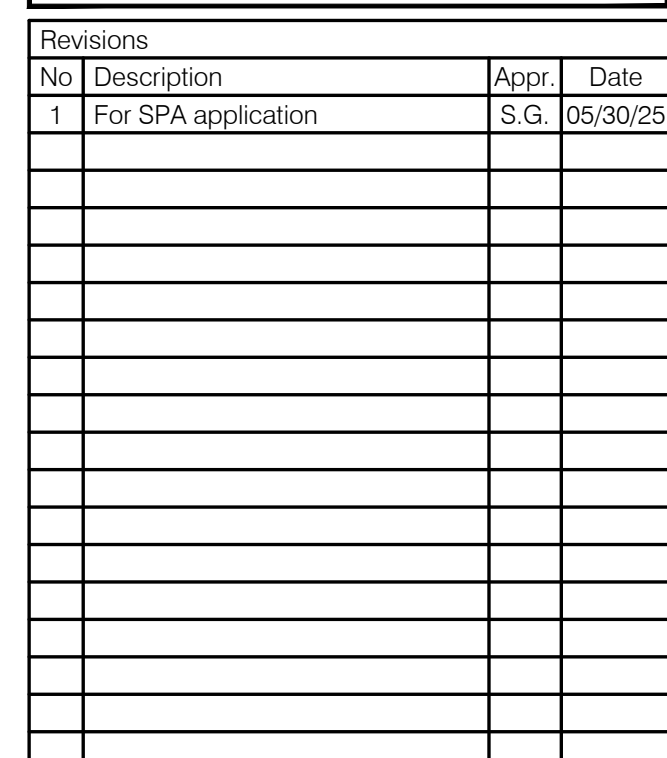
1:100

Designed by :	S. Gallant, G Dostal
Drawn by :	V. Suarez, I. Sobral
Approved by :	

AP-30

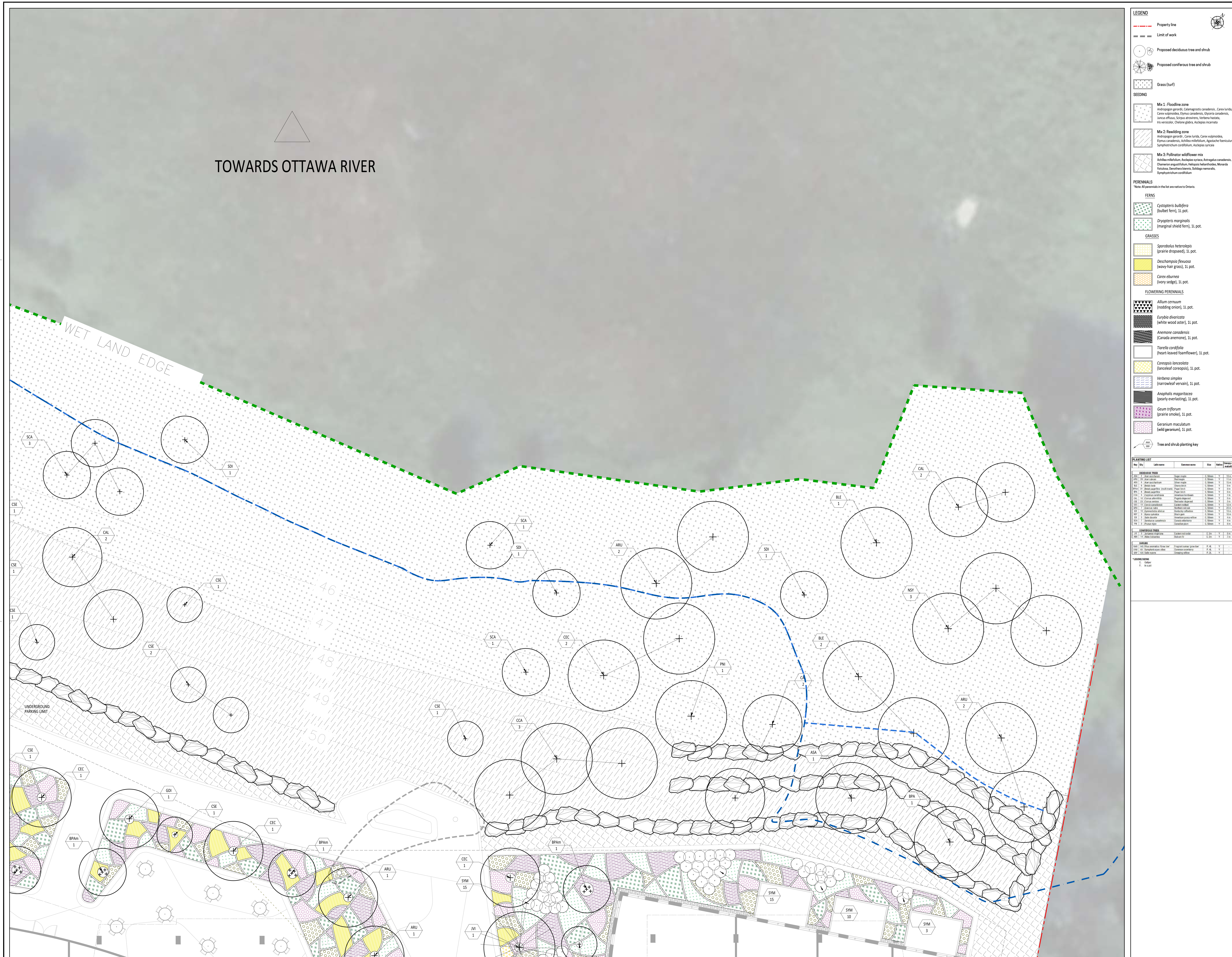
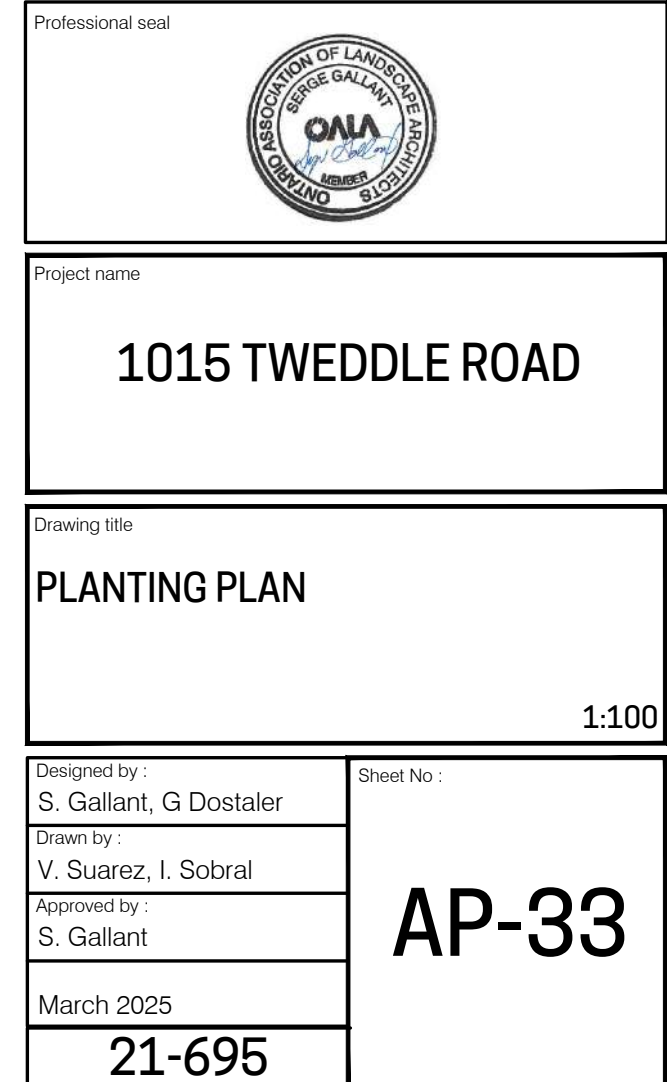
March 2025	21-695
------------	--------





Notes :

- 1- The Contractor must verify all site existing conditions before beginning the work and inform the Project Director of any errors, omissions or contradictions.
- 2- Existing grades indicated on the plan come from the survey provided by the owner.
- 3- The Contractor must not cut down any existing vegetation without the approval of the Project Director.
- 4- Implantation of the works on site must be approved by the Project Director.
- 5- The Contractor must use the CAD file for implantation of the works.
- 6- The contractor must verify the amounts specified in the schedule and notify the landscape architect of any errors, omissions or contradictions before the close of the bid.



-
- FINISHED SURFACE, SEE PAVEMENT DETAIL
- 25mm SAND BEDDING LAYER
- PRECAST CONCRETE STAIR MODULE
- CHAMFER, 10mm
- ANCHORING PLATE
- FINISHED SURFACE, SEE PAVEMENT DETAIL
- 800
- 800
- 800
- STAIR MODULE - TYPICAL SECTION
- SCALE 1:10

11 CONCRETE STAIRS
SCALE 1:10

- 02 RUBBER SYNTHETIC SURFACE
SCALE 1:10

- 03 RIVER ROCK STRIP
SCALE 1:10

-

ANCHORING PLATE

30

3

30

PROVIDE THREE SAW-CUT GROOVES AT THE STAIR NOSINGS

TOP SURFACE OF STEPS TO RECEIVE A LIGHT SANDBLAST FINISH

10mm CHAMFER

FINISH OF STEP EDGE

FINITION OF STEP EDG

10mm SEAL ON THE FULL LENGTH, HEIGHT AND BOTH SIDES OF BENCH COLOR TO BE DETERMINED

PRECAST CONCRETE

BACKER ROD 15mm

SEALING GASKET

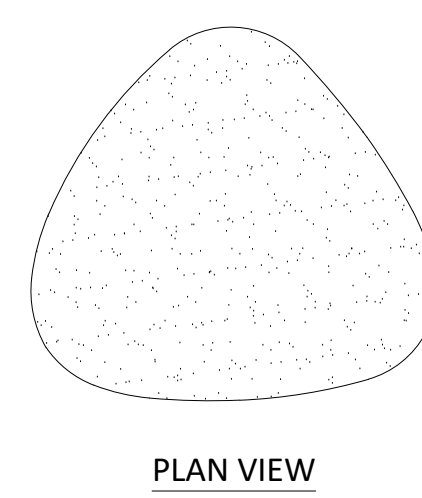
-
- WOODEN SEAT
RADIUS 25mm
400
CHAMFER 15mm
PULL UP GEOTEXTILE BEHIND THE BENCH
PRECAST CONCRETE BENCH
ANCHORING PLATE
NON-WOVEN BLACK GEOTEXTILE 240g/m²
300
150
150
300
1300
GRANULAR BASE 0-20mm COMPACTED AT 95% P.M.
75
25
- ANCHORING PLATE
- 10mm SEAL ON THE FULL LENGTH, HEIGHT AND BOTH SIDES OF BENCH
COLOR TO BE DETERMINED
PRECAST CONCRETE
BACKER ROD 15mm
- SEALING GASKET
- ROOF ASSEMBLY, SEE ARCHITECTURE DRAWINGS
- (TYPE A) SECTION - CONCRETE SEATING

12 PRECAST CONCRETE SEAT WALL & PLANTER
SCALE 1:10

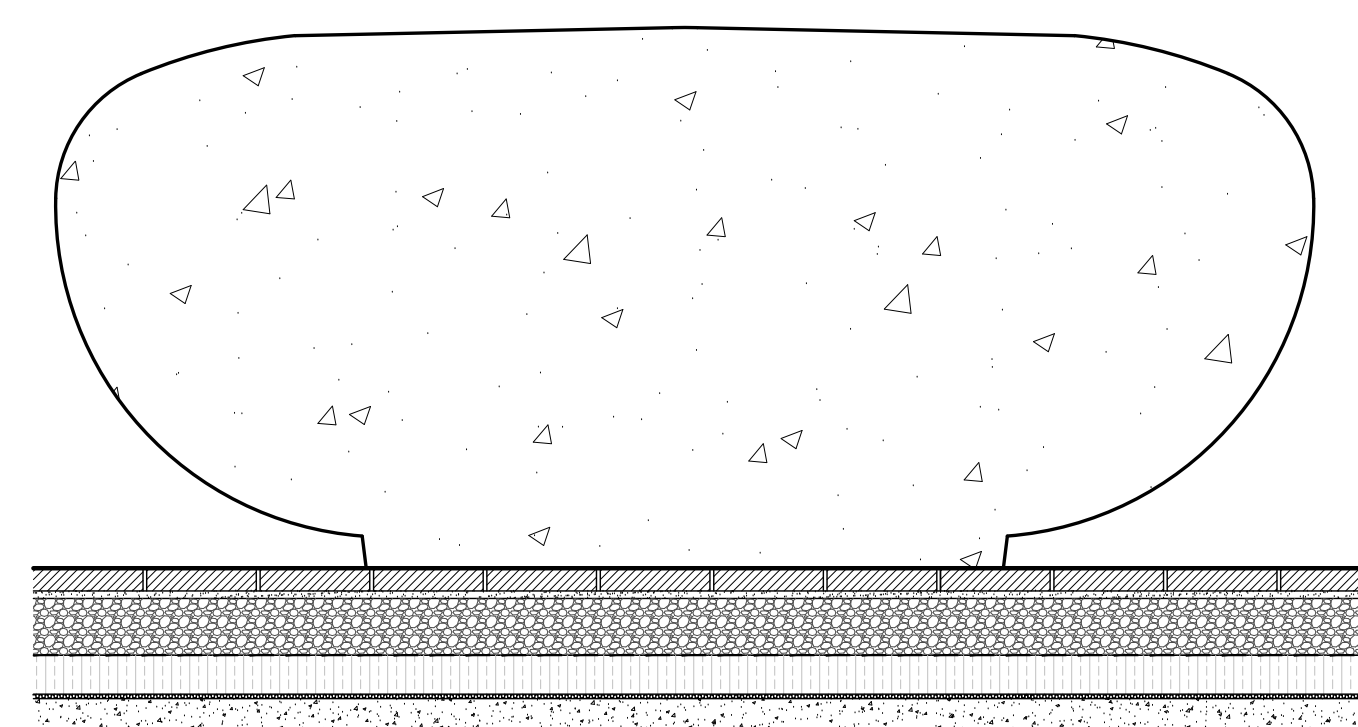
- INSTALLATION ACCORDING TO THE MANUFACTURER'S RECOMMENDATIONS.
- PROVIDE A 1% SLOPE ON ALL HORIZONTAL SURFACES TO ALLOW FOR WATER DRAINAGE.
- REFER TO SPECIFICATIONS FOR DIMENSIONS AND DETAILS.

-
- A cross-sectional diagram of the concrete pebble shaped seal. It shows a top layer of concrete pebbles, a middle layer of concrete, and a bottom layer of concrete. The top layer is labeled "CONCRETE PEBBLE SHAPED SEAL" with a line pointing to it. The middle layer is labeled "457" with a vertical dimension line. The bottom layer is labeled "TYPICAL SECTION".

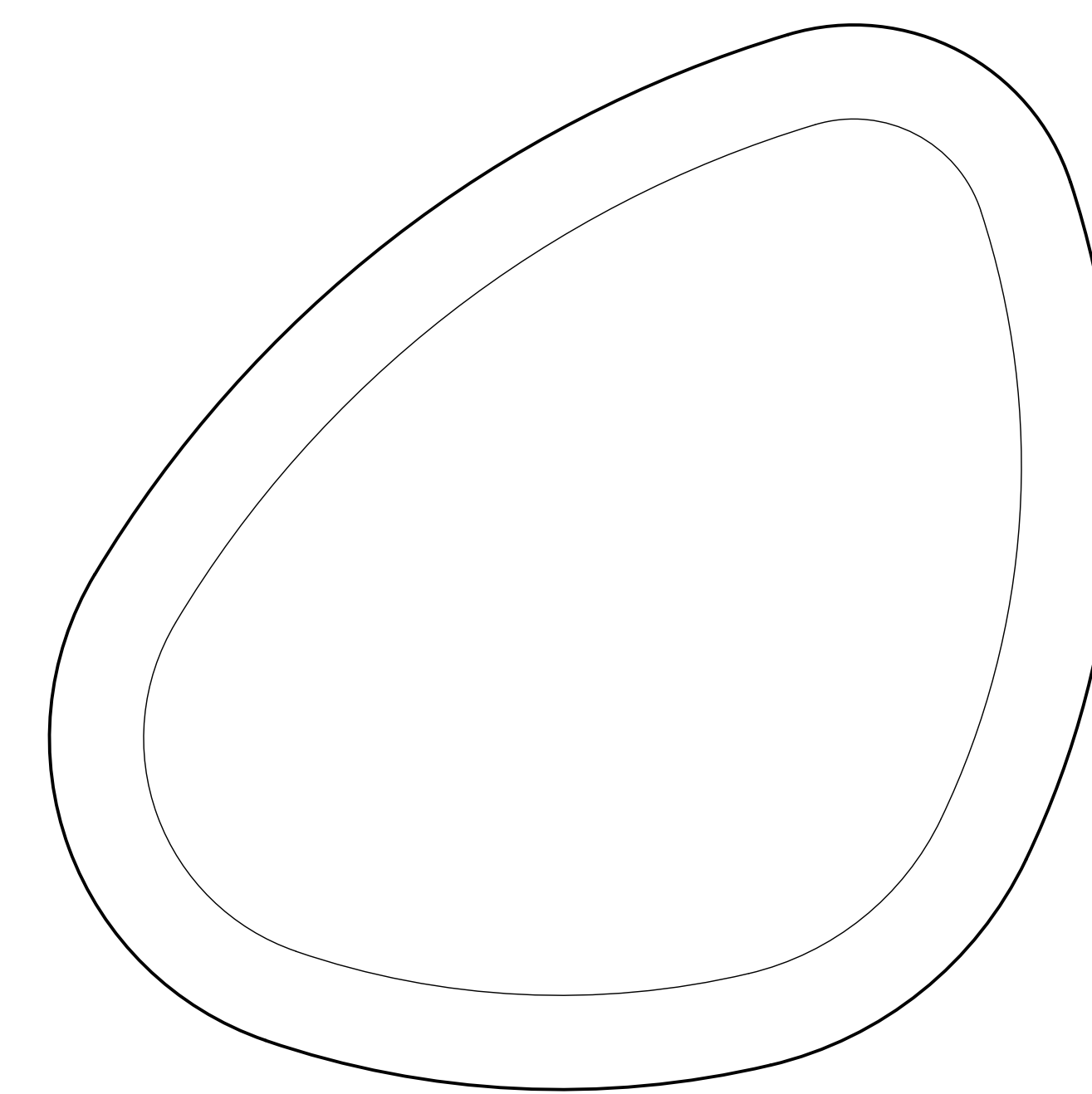
14 PRECAST CONCRETE PEBBLE SHAPED SEAT
SCALE 1:20



PLAN VIEW



TYPICAL SECTION



PLAN VIEW

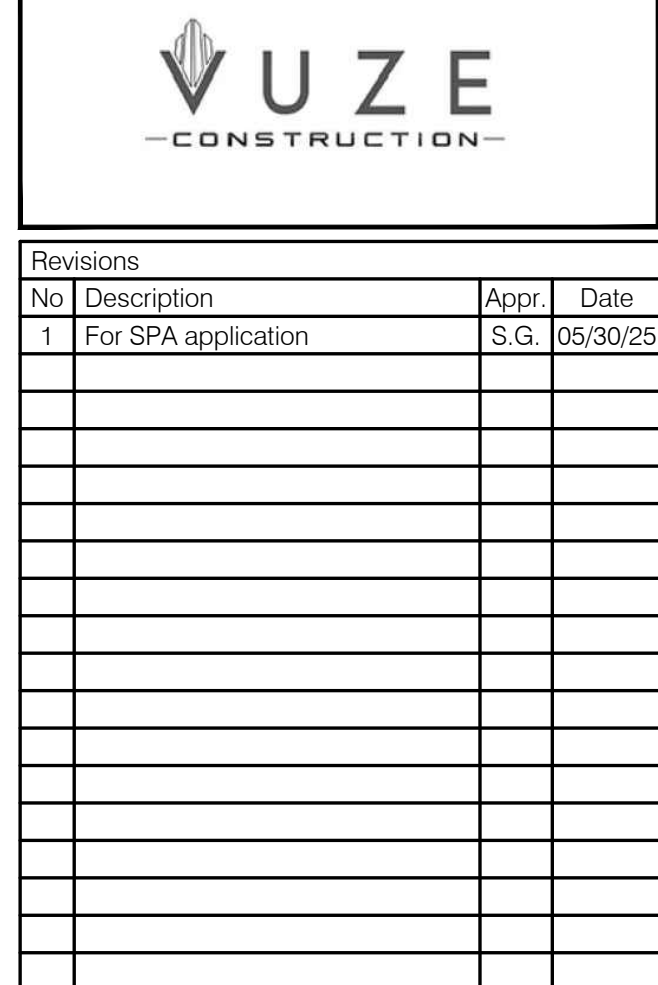
- 1- The Contractor must verify all site existing conditions before beginning the work and inform the Project Director of any errors, omissions or contradictions.
- 2- Existing grades indicated on the plan come from the survey provided by the owner.
- 3- The Contractor must not cut down any existing vegetation without the approval of the Project Director.
- 4- Implantation of the works on site must be approved by the Project Director.
- 5- The Contractor must use the CAD file for implantation of all work.
- 6- The contractor must verify the amounts specified in the schedule and notify the landscape architect of any errors, omissions or contradictions before the close of the bid.

NOTES :

- PROVIDE ANTI-THEFT ANCHORING AND HARDWARE
- INSTALL ACCORDING TO MANUFACTURER'S RECOMMENDATIONS



- Notes :**
- 1- The Contractor must verify all site existing conditions before beginning the work and inform the Project Director of any errors, omissions or contradictions.
 - 2- Existing grades indicated on the plan come from the survey provided by the owner.
 - 3- The Contractor must not cut down any existing vegetation without the approval of the Project Director.
 - 4- Implementation of the works on site must be approved by the Project Director.
 - 5- The Contractor must use the CAD file for implementation of all work.
 - 6- The contractor must verify the amounts specified in the schedule and notify the landscape architect of any errors, omissions or contradictions before the close of the bid.



DO NOT USE FOR
CONSTRUCTION



- Notes :**
- 1- The Contractor must verify all site existing conditions before beginning the work and inform the Project Director of any errors, omissions or contradictions.
 - 2- Existing grades indicated on the plan come from the survey provided by the owner.
 - 3- The Contractor must not cut down any existing vegetation without the approval of the Project Director.
 - 4- Implantation of the works on site must be approved by the Project Director.
 - 5- The Contractor must use the CAD file for implantation of the work.
 - 6- The contractor must verify the amounts specified in the schedule and notify the landscape architect of any errors, omissions or contradictions before the close of the bid.



Professional seal

Project name

1015 TWEDDLE ROAD

Drawing life

CONSTRUCTION DETAILS

1:100

Designed by:
S. Gallant, G Dostaler

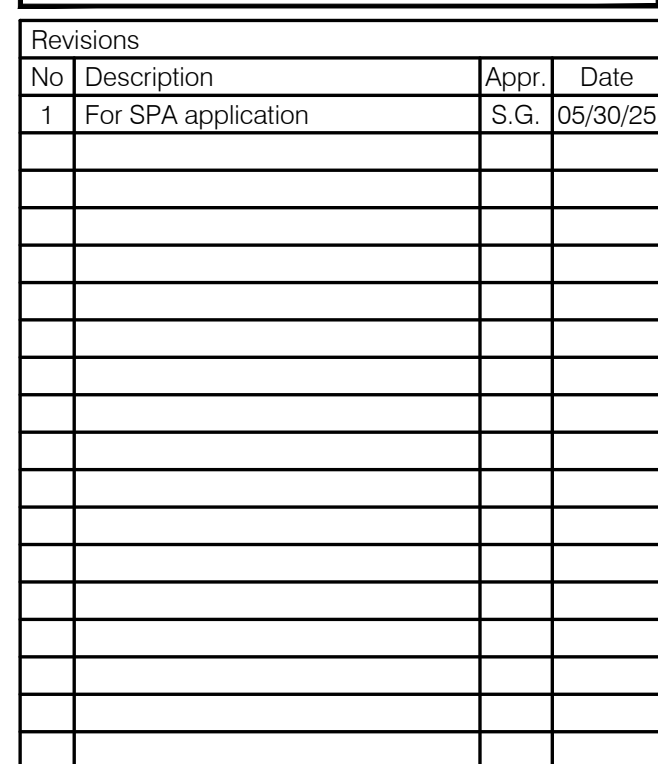
Drawn by :
Y. Suarez, J. Sobral

Approved by :
S. Gallant

March 2025

21-695

AP-42



Technical drawing illustrating the cross-section of a wooden deck structure, showing the relationship between the finished surface, beam support, wood joists, wooden deck surface, wood beam, and handrail. The drawing includes dimensions for the total height (1262) and the height of the handrail (984).

Labels and dimensions:

- FINISHED SURFACE, SEE PLAN
- BEAM SUPPORT, TO BE VALIDATED BY STRUCTURAL ENGINEER
- WOOD JOISTS
- WOODEN DECK SURFACE
- WOOD BEAM
- HANDRAIL
- 1262 (Total height)
- 984 (Handrail height)
- 100 (Handrail offset)

WOODEN DECK SURFACE

WOOD JOISTS

WOODEN DECK SURFACE

890

200

890

RISER 200x64mm

STEP DECKING 140x64mm

WOOD STRINGER

WOODEN DECK SURFACE

WOOD JOISTS

5

64

200

CONCRETE WALL-SEAT

WOOD SLAT 50x38mm

1500

350

50

350

PLAN VIEW
SCALE 1:10

CONCRETE WALL-SEAT

WOOD SLAT 50x38mm

50

350

FINISHED SURFACE, SEE PLAN

TYPICAL SECTION
SCALE 1:10

Notes :

- 1- The Contractor must verify all site existing conditions before beginning the work and inform the Project Director of any errors, omissions or contradictions.
- 2- Existing grades indicated on the plan come from the survey provided by the owner.
- 3- The Contractor must not cut down any existing vegetation without the approval of the Project Director.
- 4- Implantation of the works on site must be approved by the Project Director.
- 5- The Contractor must use the CAD file for implantation of the work.
- 6- The contractor must verify the amounts specified in the schedule and notify the landscape architect of any errors, omissions or contradictions before the close of the bid.



Drawing title
CONSTRUCTION DETAILS
 1:100

Designed by : S. Gallant, G Dostaler	Sheet No : <div style="font-size: 2em; font-weight: bold; text-align: center;">AP-43</div>
Drawn by : V. Suarez, I. Sobral	
Approved by : S. Gallant	
March 2025	
21-695	

SHRUB PLANTING

DISTANCE OF PLANTATION

0.87 X
X
X/2

100
500 MIN.
150 MIN.

25mm MULCH DEPTH AT BASE OF SHRUB
WATERING SAUCER
FINISHED GRADE, SEE PLAN
PLANTING SOIL, SET UP BY SUCCESSIVE COATS (LAYERS) OF NON COMPACTED SOIL
REMOVE CONTAINER OR REMOVE THE TOP AND BOTTOM OF ORGANIC CONTAINER
PRESS DOWN SUBSOIL AND SCARIFY TO 150 mm DEEP UNDER ROOTBALL
UNDISTURBED SOIL PREFERABLY, OR COMPACTED SOIL, 85% OF M.P.

200
2x ROOTBALL

NOTES:
-THE PLANTING PIT MUST HAVE A DIAMETER OF 500mm MINIMUM

100
500 MIN.
150 MIN.

25mm MULCH DEPTH AT BASE OF SHRUB
WATERING SAUCER
FINISHED GRADE, SEE PLAN
REMOVE CONTAINER OR REMOVE THE TOP AND BOTTOM OF ORGANIC CONTAINER
PLANTING SOIL, SET UP BY SUCCESSIVE COATS (LAYERS) OF NON COMPACTED SOIL
PRESS DOWN SUBSOIL AND SCARIFY TO 150 mm DEEP UNDER ROOTBALL
UNDISTURBED OR COMPACTED SOIL, 85% OF M.P.

200
X/2

The diagram illustrates the installation of perennial plants. The cross-section view on the left shows two plants in a trench. The trench is 50mm deep and 300mm wide. The plants are spaced at a distance 'c/c' (center-to-center). The trench is filled with soil, and the bottom is scarified to a depth of 150mm. The plants are surrounded by a 100mm deep mulch layer. The plan view on the right shows a triangular arrangement of plants with dimensions 'x' and 'x/2'.

PERENNIAL PLANTATION
SCALE 1:20

50
300
DISTANCE OF PLANTATION c/c
100mm MULCH DEPTH AND 25mm AROUND BASE OF PERENNIALS
REMOVE PLASTIC CONTAINERS AND LOOSEN ROOTS AND SPREAD
THE PLANTING SOIL AROUND THE PLANTS, DO NOT COMPACT
SCARIFY BOTTOM OF PLANTING PIT TO 150mm DEEP

0.87 x
x
x/2

NOTE:
- THE PERENNIALS ARE ALWAYS PLANTED IN STAGGERED ROWS (X: SEE LISTS OF PLANTATIONS AND PLANS)
- SPRAY THE GROUND WITH WATER IMMEDIATELY AFTER PLANTING

The image contains three cross-section diagrams illustrating different landscape construction methods:

- Typical Section - Turf Installation on Structural Slab:** This diagram shows a cross-section of a turf installation. It features a structural slab at the base, followed by a layer of soil, and then a layer of turf. A 400mm footway is indicated. Callouts include 'GRASS, SEE PLANS' and 'A', 'B', 'C' markers.
- Typical Section - Planting on Structural Slab:** This diagram shows a cross-section of a planting area. It features a structural slab at the base, followed by a layer of soil, and then a layer of planting. A 400mm footway is indicated. Callouts include 'PLANTING, SEE PLAN' and 'A', 'B', 'C' markers.
- Typical Section - Paver Curb on Structural Slab:** This diagram shows a cross-section of a paver curb installation. It features a structural slab at the base, followed by a layer of soil, and then a layer of pavers. A 400mm footway is indicated. Callouts include 'CURB, SEE PLAN', 'FINISHED SURFACE, SEE PLAN', 'PLANTING', 'RIGID INSULATION, SEE ARCHITECTURE AND STRUCTURAL DRAWINGS', and 'A', 'B', 'C' markers.

[illegible]

STAKE PLACEMENT PLAN VIEW

COLLAR PLACED AT 1/3 OF OVERALL HEIGHT

ROOTBALL HEIGHT

100

200

2x OF ROOTBALL

NOTES :

- THE PLANTING PIT MUST HAVE A DIAMETER OF 500mm MINIMUM
- STAKES ARE REQUIRED ONLY WHEN THE EVERGREEN HAS A HEIGHT OF 150cm AND MORE

#12 GALVANIZED WIRE ENCASED IN 6" 1/2" TRANSPARENT RUBBER HOSE.

T" STEEL STAKE 35 X 35 X 2500mm WITH AN 87mm Ø S.F.M. TYPE STAND

PROTECTION AGAINST RODENTS, UP TO 300mm HIGH

100mm MULCH

150mm X 150 mm SAUCER AROUND PLANT PIT

FINISHED GROUND LEVEL, SEE PLAN

PLANTING SOIL, SET UP BY SUCCESSIVE COATS(LAYERS) OF NON COMPACTED SOIL

CUT AND REMOVE BURLAP FROM TOP 2/3 OF ROOTBALL OR CUT AND REMOVE TOP EDGE AND BOTTOM OF ORGANIC CONTAINER

PRESS DOWN SUBSOIL AND SCARIFY TO 200 mm DEEP UNDER ROOTBALL

UNDISTURBED SOIL PREFERABLY OR COMPACTED SOIL . 85% OF M.P.

NOTE :

- THE PLANTING PIT MUST HAVE A MINIMUM DIAMETER OF 500mm

Labels and Dimensions:

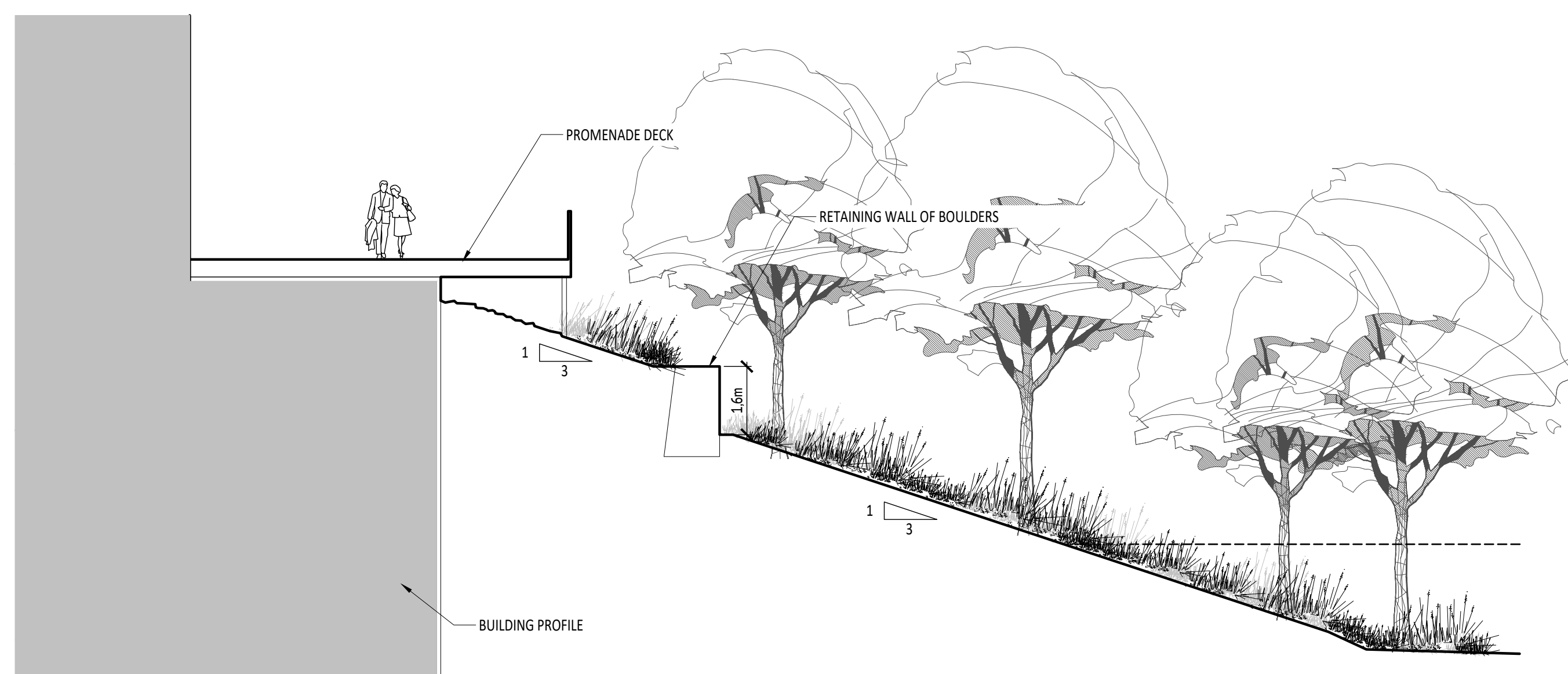
- MULCH, 100mm THICK
- WATERING BASIN
- PLANTING SOIL, PLACED IN SUCCESSIVE LAYERS OF 150 TO 200MM, WELL COMPACTED
- FINISHED GROUND SURFACE
- CUT AND REMOVE THE TOP RIM AND BOTTOM OF THE ORGANIC CONTAINER
- COMPACT THE SOIL AROUND THE ROOT BALL
- EXISTING UNDISTURBED SOIL
- 100 ± 150mm (height of mulch)
- la motte (root ball)
- min. (minimum height)
- x (radius of pit)
- 2x (diameter of pit)

SHRUB PLANTING
SCALE 1:20

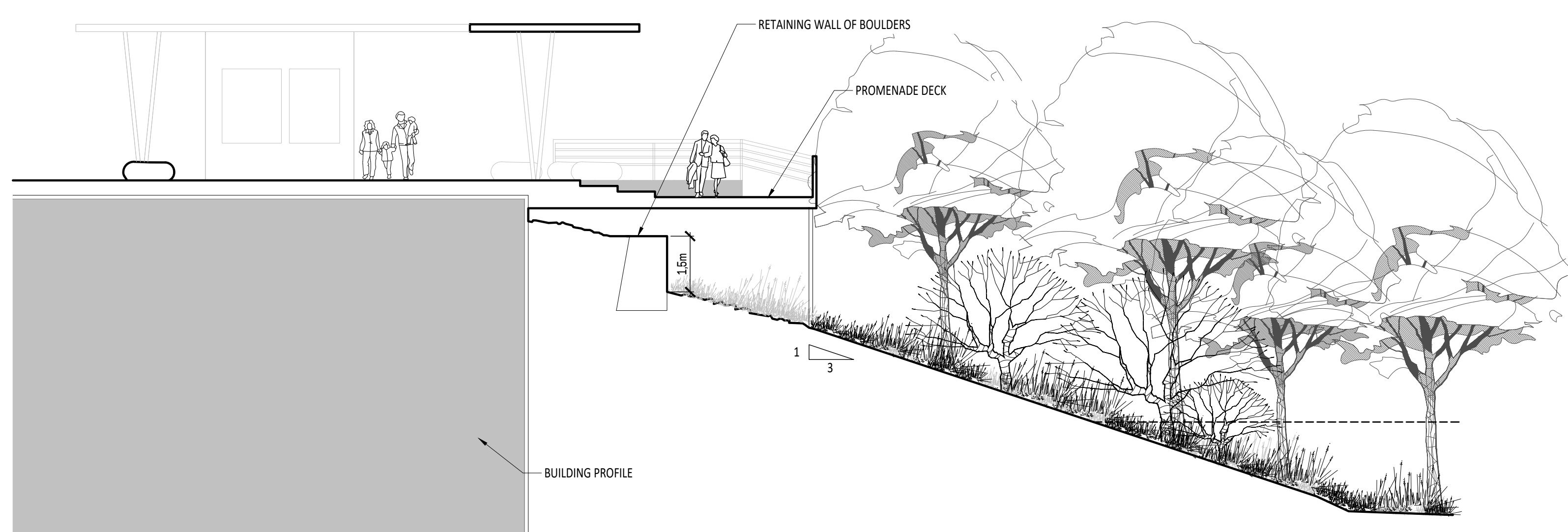
Notes :

- 1- The Contractor must verify all site existing conditions before beginning the work and inform the Project Director of any errors, omissions or contradictions.
- 2- Existing grades indicated on the plan come from the survey provided by the owner.
- 3- The Contractor must not cut down any existing vegetation without the approval of the Project Director.
- 4- Implementation of the works on site must be approved by the Project Director.
- 5- The Contractor must use the CAD file for implementation of all work.
- 6- The contractor must verify the amounts specified in the schedule and notify the landscape architect of any errors, omissions or contradictions before the close of the bid.

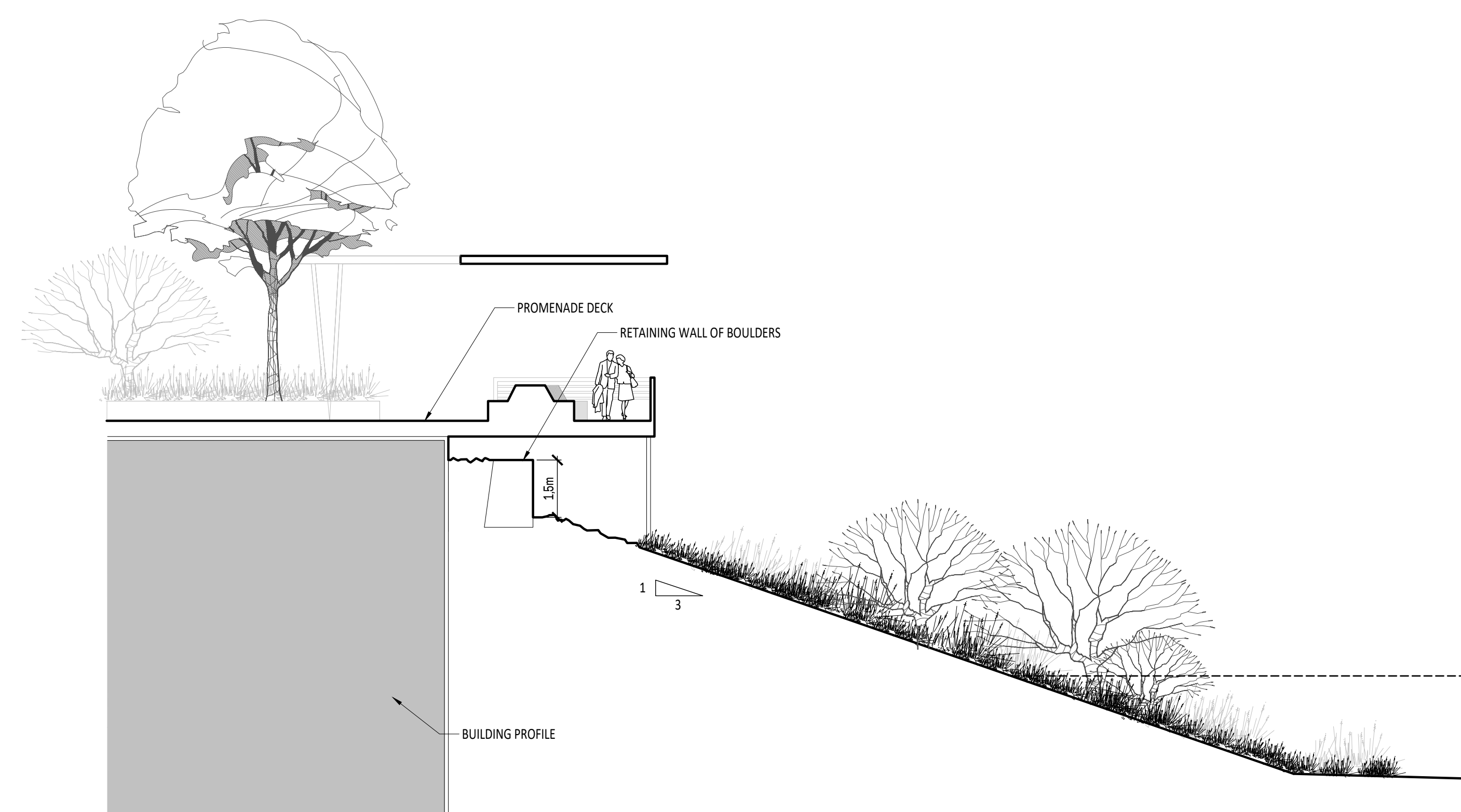
A DECK'S RELATION TO THE STREET
ÉCHELLE 1:100



A RUE D'ENTRÉE
ÉCHELLE 1:100



A RUE D'ENTRÉE
ÉCHELLE 1:100



A RUE D'ENTRÉE
ÉCHELLE 1:100

Notes :

- 1- The Contractor must verify all site existing conditions before beginning the work and inform the Project Director of any errors, omissions or contradictions.
- 2- Existing grades indicated on the plan come from the survey provided by the owner.
- 3- The Contractor must not cut down any existing vegetation without the approval of the Project Director.
- 4- Implantation of the works on site must be approved by the Project Director.
- 5- The Contractor must use the CAD file for implantation of all work.
- 6- The contractor must verify the amounts specified in the schedule and notify the landscape architect of any errors, omissions or contradictions before the close of the bid.

