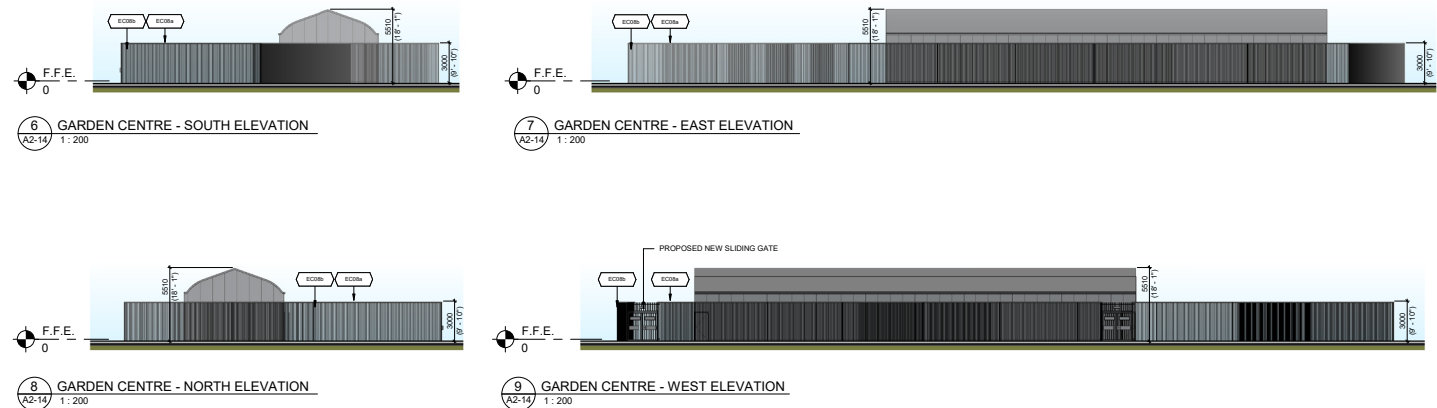


EXTERIOR FINISH SCHEDULE	
(EW01)	CONCRETE PANELS COLOUR: PRECAST COLOUR: STEEL WOOL
(EF01a)	ALUMINUM COMPOSITE PANEL MANUFACTURER: ALPOLIC (OR APPROVED EQUIVALENT) COLOUR: T08 BLACK 16mm DRY JOINT SYSTEM. ALL TRIMS & FLASHING TO MATCH CONTRACTOR TO PROVIDE COLOURFINISH SAMPLE FOR ARCHITECT/TOWNER APPROVAL PRIOR TO ORDERING OF MATERIALS
(EF01b)	INSULATED METAL WALL PANEL MANUFACTURER: ALPOLIC (OR APPROVED EQUIVALENT) COLOUR: STEEL WOOL 16mm DRY JOINT SYSTEM. ALL TRIMS & FLASHING TO MATCH CONTRACTOR TO PROVIDE COLOURFINISH SAMPLE FOR ARCHITECT/TOWNER APPROVAL PRIOR TO ORDERING OF MATERIALS
(EF01c)	ALUMINUM COMPOSITE PANEL MANUFACTURER: ALPOLIC (OR APPROVED EQUIVALENT) COLOUR: CUSTOM GREEN. ALPOLIC SHERWIN-WILLIAMS COI PARTONE 562 COATING: 735L180 - VAPOLON 17357 GREEN / CMR 17357 16mm DRY JOINT SYSTEM. ALL TRIMS & FLASHING TO MATCH CONTRACTOR TO PROVIDE COLOURFINISH SAMPLE FOR ARCHITECT/TOWNER APPROVAL PRIOR TO ORDERING OF MATERIALS
(EF01d)	ALUMINUM COMPOSITE PANEL MANUFACTURER: ALPOLIC (OR APPROVED EQUIVALENT) COLOUR: BLACK 16mm DRY JOINT SYSTEM. ALL TRIMS & FLASHING TO MATCH CONTRACTOR TO PROVIDE COLOURFINISH SAMPLE FOR ARCHITECT/TOWNER APPROVAL PRIOR TO ORDERING OF MATERIALS
(EC01a)	GLAZED DOORS & WINDOWS CURTAIN WALL & STOREFRONT FRAMING SYSTEM THERMALLY BROKEN ALUMINUM FRAMES COLOUR: BLACK ANODIZED GLAZING: CLEAR INSULATED VISION GLASS (W/ LOW-E COATING TINT) SOLARBAN 70XL GREEN GLAZING WILL NOT BE ACCEPTED (TINTED GLASS)
(EC01b)	H.M. DOORS & FRAMES PREFABRICATED HOLLOW METAL DOORS AND FRAMES INSULATED DOORS ON THERMALLY BROKEN FRAMES COLOUR: STEEL WOOL
(EC01c)	H.M. DOORS & FRAMES THERMALLY BROKEN METAL DOORS AND FRAMES INSULATED DOORS ON THERMALLY BROKEN FRAMES COLOUR: T08 BLACK
(EC02a)	OVERHEAD DOORS & FRAMES PREFABRICATED HOLLOW METAL DOOR AND FRAMES INSULATED DOORS ON THERMALLY BROKEN FRAMES FINISH: FACTORY WHITE COLOUR: PAINTED STEEL WOOL
(EC02b)	OVERHEAD DOORS & FRAMES INSULATED METAL DOOR ON ACRYLIC WINDOW FINISH: FACTORY WHITE COLOUR: PAINTED STEEL WOOL
(EC03)	EXPOSED STEEL STAIRS STEEL STAIRS, RAILINGS, STRUCTURE AND ALL ASSOCIATED COMPONENTS PROMETHEUS ZINC HIGH-PRIMER COLOUR: STEEL WOOL ASPHALTIC NOISE-PAINTED SAFETY YELLOW
(EC04)	STAINLESS STEEL CHECKER PLATE 1/8" THK 304-16 GA. STAINLESS STEEL CHECKER PLATE APPLIED TO STEEL COLUMN WITH COUNTERSINK GALVANIZED SCREWS WITH PLATES AND/ OR COLLARS AND CONTINUOUS BASE TO SLOPE OF ENTRANCE RAMP PROVIDE SEALANT ALONG PERIMETER WHERE TOP OF PLATE TERMINATES AT COLUMN
(EC05)	ACM FLASHING H.M. FLASHING IS GAL. METAL FLASHING • AT BLACK ACM PANELS: RETURN ACM AND FORM PARAPET • AT WOOD ACM PANELS: RETURN ACM AND FORM PARAPET • AT GREEN ACM PANELS: RETURN ACM AND FORM PARAPET • AT STEEL WOOL: ELECTROSTATICALLY PAINTED TO MATCH • AT SPRUCE BLACK: ELECTROSTATICALLY PAINTED TO MATCH REFER TO DETAILS FOR PROFILE
(EC06)	EXTERIOR SIGNAGE EXH. ILLUMINATED SIGNAGE PROVIDE 16mm EXTERIOR GRADE PLYWOOD BACKING S.C. TO PROVIDE ELECTRICAL CONNECTION (REFER TO ELEC. DWGS) COORDINATE EXACT DIMENSIONS OF BACKING AND POWER REQUIREMENTS WITH CANADIAN TIRE SIGNAGE SUPPLIER
(EC07)	LIGHT FIXTURE REFER TO ELEC. DWGS. FOR LIGHT FIXTURE COLOUR: BLACK ON 16mm EXTERIOR GRADE PLYWOOD BACKING
(EC08a)	FENCING IRON EAGLE FENCE WITH IRON EAGLE GATE COLOUR: BLACK
(EC08b)	FENCING CULTURED STONE MANUFACTURER: CANADIAN STONE CONTRACTOR TO PROVIDE COLOURFINISH SAMPLE FOR ARCHITECT/TOWNER APPROVAL PRIOR TO ORDERING OF MATERIALS
GENERAL NOTE: 1. COLOURED ELEVATIONS ARE ONLY A REPRESENTATION OF TRUE COLOURS 2. FOR COLOURS AND FINISHES REFER TO CANADIAN TIRE FINISH REFERENCE CHART 3. PAINT EXPOSED PIPES, DUCTS OR RELATED ELEMENTS TO MATCH THE COLOUR OF THE EXTERIOR WALLS FINISH ON WHICH THEY ARE INSTALLED 4. DO NOT PRIME FOUNDATION WALLS I.E.D. 5. PAINT ALL EXPOSED EDGES OF PRECAST CONCRETE PANELS TO MATCH WALL COLOUR	



This proposal constitutes Work. "Work" means all artwork, renderings, key plans, and other materials and designs prepared by Turner Fleischer solely for this project/site. All Work remains the exclusive property of Turner Fleischer and retain all rights and title to the Work. Work may not be copied, reproduced, or republished without our prior written consent. The Work is subject to change and is made available for your review for informational and consultation purposes only in relation to this project/site.



GREENBANK RD + STRANDHERD DR
BARRHAVEN, ON.
05.264

DWG #A2-14
2025-04-09
SCALE: N.T.S.

CANADIAN TIRE STORE #442
EXTERIOR ELEVATIONS

TURNER
FLEISCHER