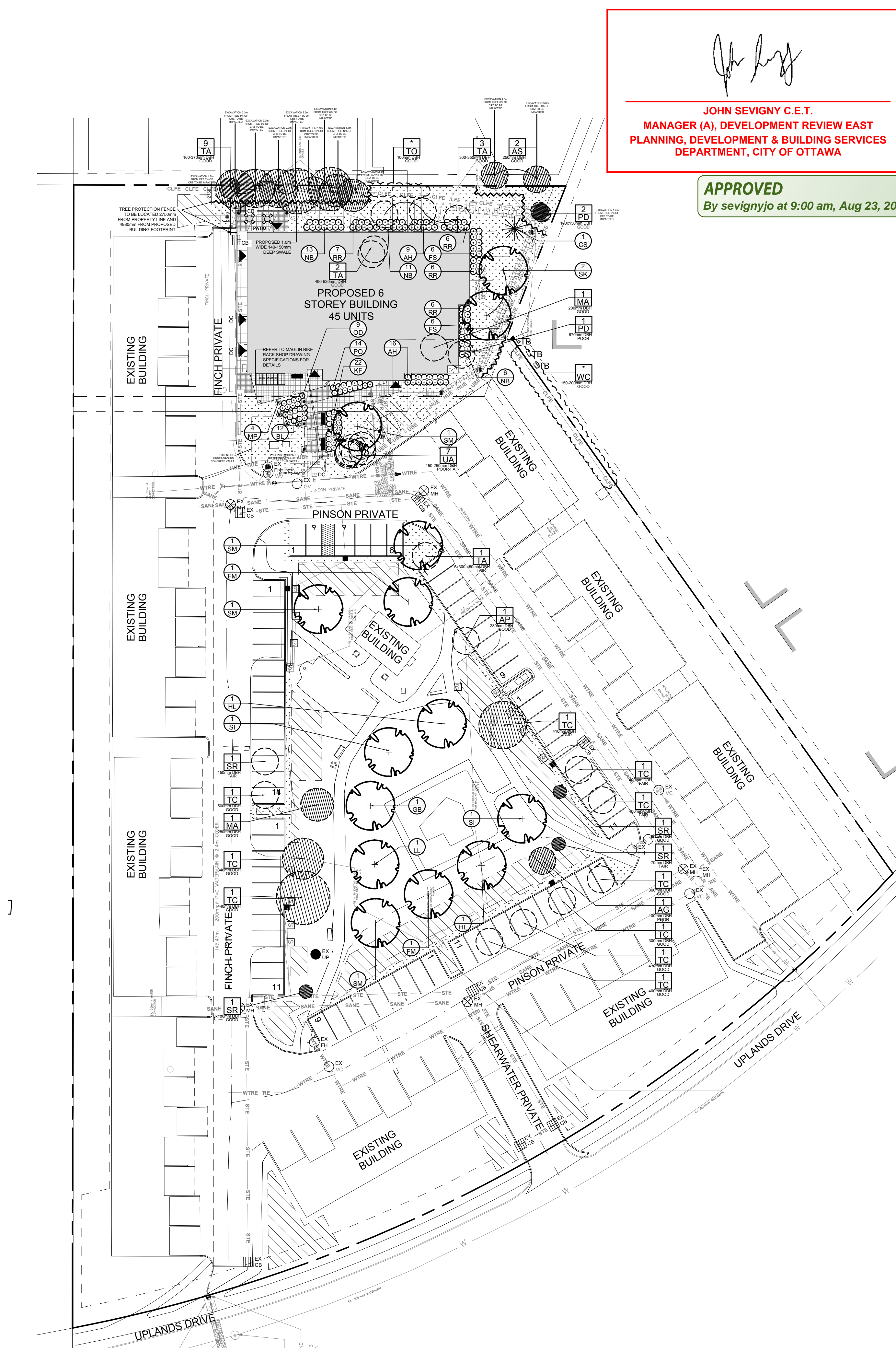


1
L.1

TREE CONSERVATION REPORT & LANDSCAPE PLAN- FULL SITE
SCALE 1:400



John Seigny

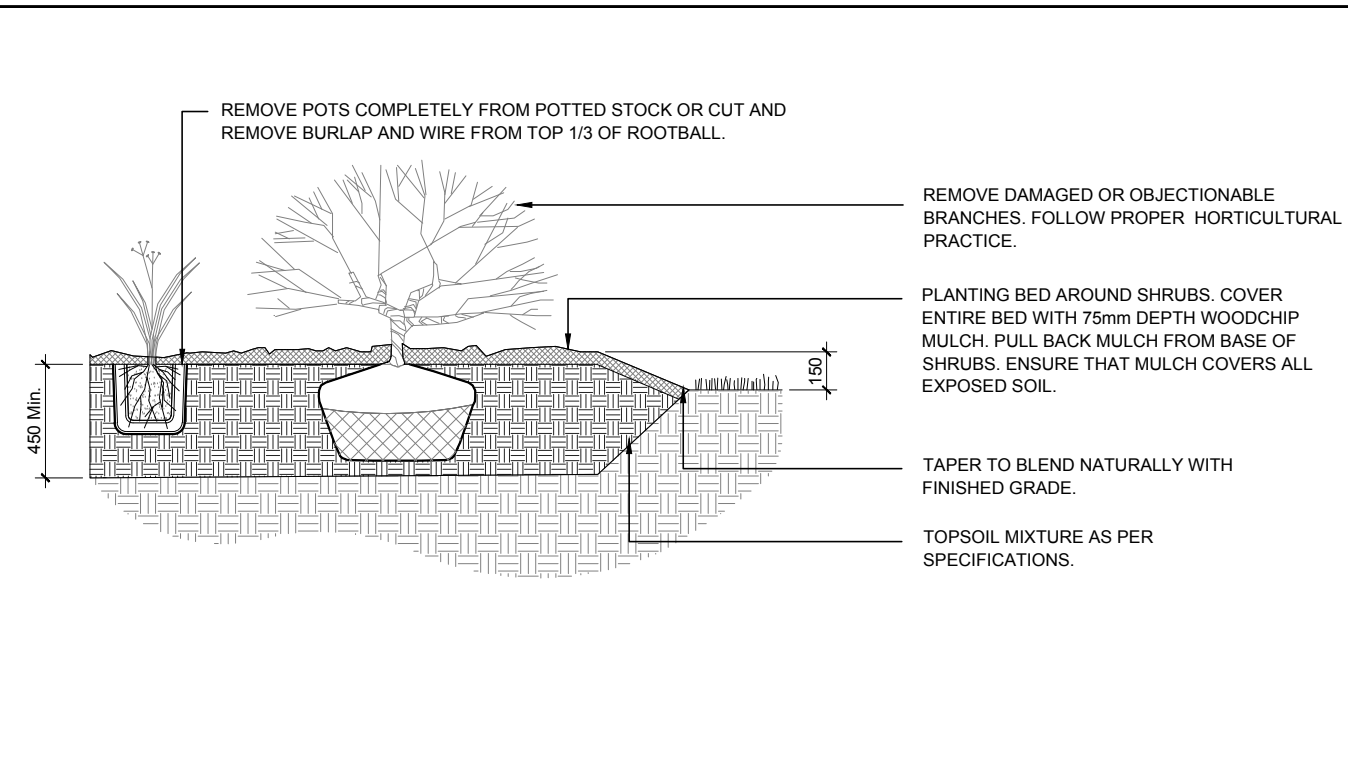
JOHN SEIGNY C.E.T.
MANAGER (A), DEVELOPMENT REVIEW EAST
PLANNING, DEVELOPMENT & BUILDING SERVICES
DEPARTMENT, CITY OF OTTAWA

APPROVED
By seignynjo at 9:00 am, Aug 23, 2024

- GENERAL NOTES:**
- IT IS THE RESPONSIBILITY OF THE APPROPRIATE CONTRACTOR OR OFFICIAL TO REPORT ANY ERRORS, OMISSIONS OR DISCREPANCIES ON THIS PLAN WITH ACTUAL SITE CONDITIONS TO THE LANDSCAPE ARCHITECT BEFORE PROCEEDING WITH CONSTRUCTION.
 - THE CONTRACTOR IS TO NOTIFY ALL UTILITY COMPANIES AND AUTHORITIES PRIOR TO ANY EXCAVATION AND ASCERTAIN LOCATIONS OF UNDERGROUND SERVICES.
 - THE CONTRACTOR IS TO REINSTATE ALL AREAS AND ITEMS DAMAGED AS A RESULT OF CONSTRUCTION ACTIVITY.
 - THE CONTRACTOR IS TO COMPLY WITH ALL PERTINENT CODES AND BY-LAWS.
 - THE CONTRACTOR IS TO MAINTAIN A POSITIVE SURFACE RUN-OFF THROUGHOUT THE ENTIRE CONSTRUCTION PERIOD.
 - THE LANDSCAPE ARCHITECT IS NOT RESPONSIBLE FOR SUBSURFACE CONDITIONS.
 - THE CONTRACTOR IS TO IDENTIFY ALL EXISTING TREES TO REMAIN ON SITE WITH THE LANDSCAPE ARCHITECT PRIOR TO CONSTRUCTION.
 - THE CONTRACTOR IS TO STAKE THE PROPOSED LOCATION OF ALL PLANT MATERIAL IN CONJUNCTION WITH THE LANDSCAPE ARCHITECT PRIOR TO EXCAVATION.
 - MINIMUM DISTANCES FOR SELECTED DECIDUOUS TREES ARE AS FOLLOWS:
 - BUILDING FOUNDATIONS - 7.5M
 - SIDEWALKS - 1.5M
 - PUBLIC STREETS - 2.5M
 - UNDERGROUND INFRASTRUCTURE - 2.0M
 - ALL TREES WITHIN 1M OF UNDERGROUND UTILITY TRENCHES ARE TO BE EXCAVATED BY HAND.
 - REMOVE ALL PROTECTIVE WRAPPING FROM TREE TRUNKS AFTER INSTALLATION.
 - STAKING OF TREES SHALL ONLY BE PERFORMED IF NECESSARY.
 - ENSURE THAT MULCH IS PULLED BACK A MINIMUM DISTANCE OF 75MM FROM BASE OF TREE TRUNK.

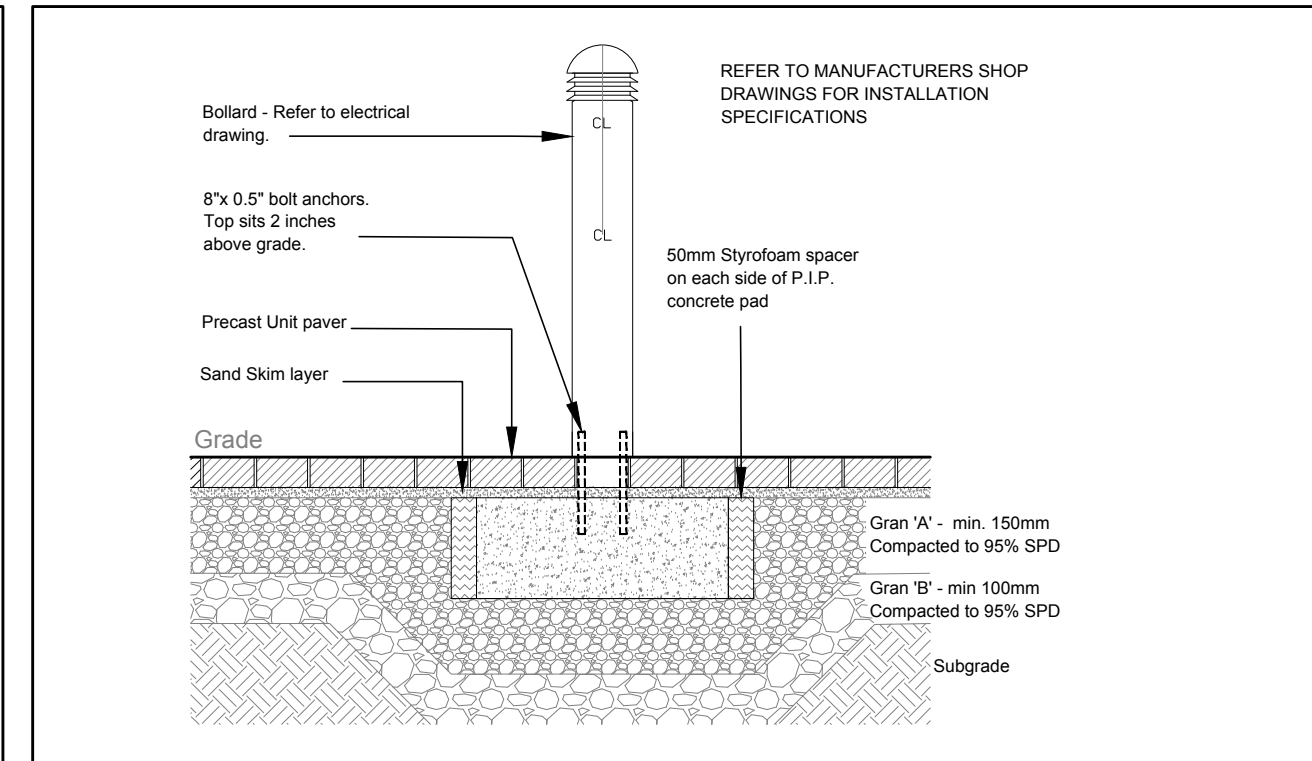
2
L.1

SHRUB / ORNAMENTAL GRASS PLANTING
SCALE: NTS



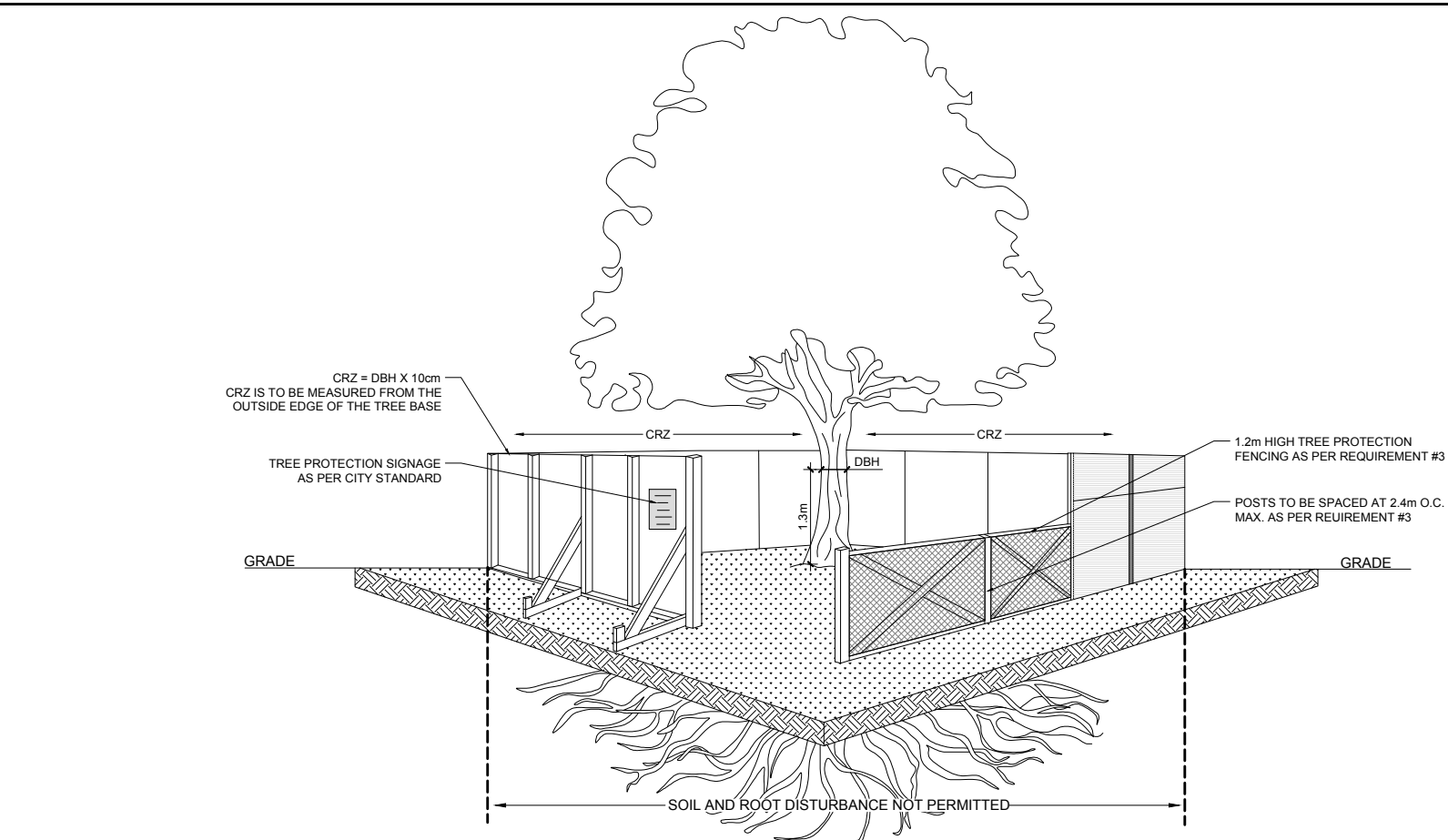
3
L.1

BOLLARD LIGHT
SCALE: NTS



4
L.1

TREE PROTECTION FENCE
SCALE: NTS



- TREE PROTECTION REQUIREMENTS:**
- PRIOR TO ANY WORK ACTIVITY WITHIN THE CRITICAL ROOT ZONE (CRZ = 10x DIAMETER) OF A TREE, TREE PROTECTION FENCING MUST BE INSTALLED SURROUNDING THE CRITICAL ROOT ZONE AND REMAIN IN PLACE UNTIL THE WORK IS COMPLETE.
 - UNLESS PLANS ARE APPROVED BY CITY FORESTRY STAFF, FOR WORK WITHIN THE CRZ:
 - DO NOT PLACE ANY MATERIAL OR EQUIPMENT INCLUDING OUTHOUSES;
 - DO NOT ATTACH ANY SIGNS, NOTICES OR POSTERS TO ANY TREE;
 - DO NOT RAISE OR LOWER THE EXISTING GRADE;
 - TUNNEL OR BORE WHEN DIGGING;
 - DO NOT DAMAGE THE ROOT SYSTEM, TRUNK, OR BUNCHES OF ANY TREE;
 - ENSURE THAT EXHAUST FUMES FROM ALL EQUIPMENT ARE NOT DIRECTED TOWARD ANY TREE CANOPY;
 - DO NOT EXTEND HARD SURFACE OR SIGNIFICANTLY CHANGE LANDSCAPING.
 - TREE PROTECTION FENCING MUST BE AT LEAST 1.2m IN HEIGHT, AND BE CONSTRUCTED OF RIGID OR FRAMED MATERIALS (E.G. MODULOC® STEEL, PLYWOOD HOARDING, OR SNOW FENCE ON A 2"x4" WOOD FRAME) WITH POSTS 2.4m APART, SUCH THAT THE FENCE LOCATION CANNOT BE ALTERED. ALL SUPPORTS AND BRACING MUST BE PLACED OUTSIDE OF THE CRZ, AND INSTALLATION MUST MINIMISE DAMAGE TO EXISTING ROOTS. (SEE DETAILS)
 - THE LOCATION OF THE TREE PROTECTION FENCING MUST BE DETERMINED BY AN ARBORIST AND DETAILED ON ANY ASSOCIATED PLANS FOR THE SITE (E.G. TREE CONSERVATION REPORT, TREE DISCLOSURE REPORT, ETC.). THE PLAN AND CONSTRUCTED FENCING MUST BE APPROVED BY CITY FORESTRY STAFF PRIOR TO THE COMMENCEMENT OF WORK.
 - IF THE FENCED TREE PROTECTION AREA MUST BE REDUCED TO FACILITATE CONSTRUCTION, MITIGATION MEASURES MUST BE PRESCRIBED BY AN ARBORIST AND APPROVED BY CITY FORESTRY STAFF. THESE MAY INCLUDE THE PLACEMENT OF PLYWOOD, WOOD CHIPS OR STEEL PLATING OVER THE ROOTS FOR PROTECTION OR THE PROPER PRUNING AND CARE OF ROOTS WHERE ENCOUNTERED.

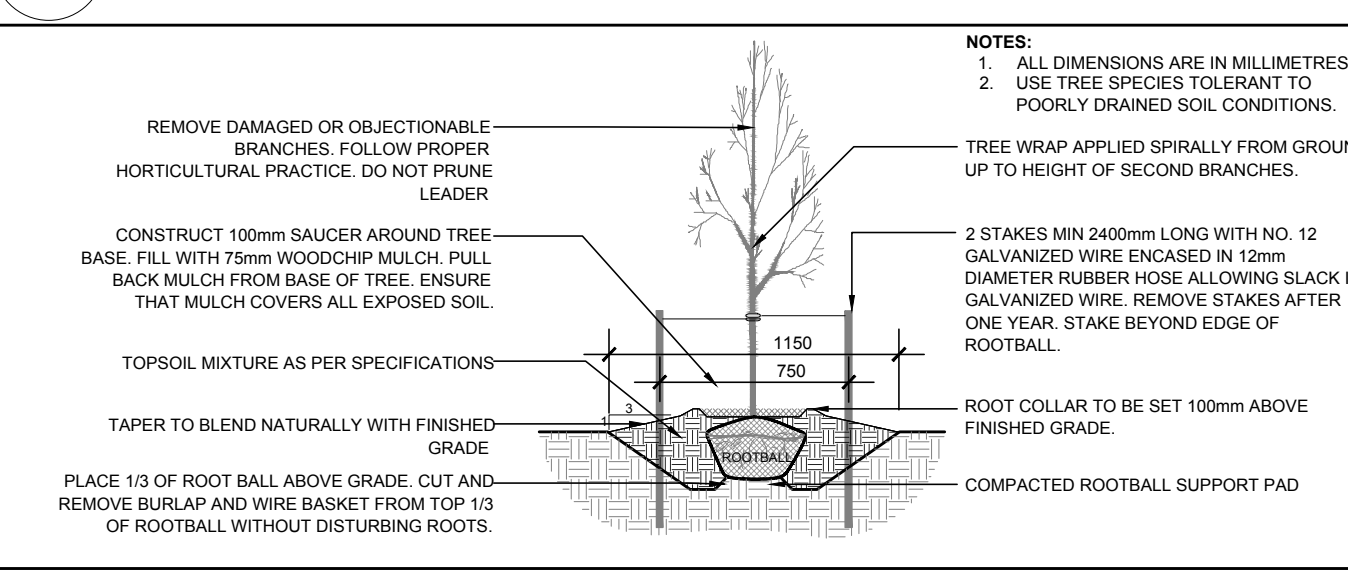
BY-LAWS:

ALL CITY-OWNED TREES ARE PROTECTED UNDER THE MUNICIPAL TREES AND NATURAL AREAS PROTECTION BY-LAW (2009-270) WITHIN THE URBAN AREA.

PRIVATELY OWNED TREES GREATER THAN 50mm IN DIAMETER ON LOTS 1 HECTARE IN SIZE OR LESS, AND TREES GREATER THAN 100mm IN DIAMETER ON LOTS GREATER THAN 1 HECTARE, ARE PROTECTED UNDER THE URBAN TREE CONSERVATION BY-LAW (2009-200).

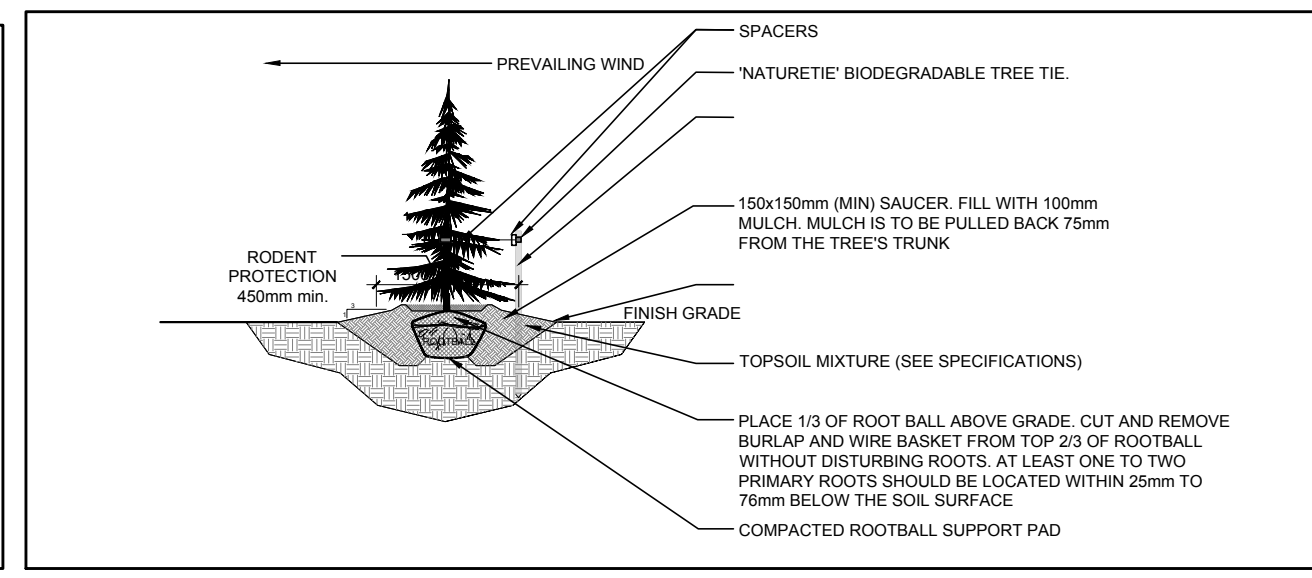
5
L.1

DECIDUOUS TREE PLANTING
SCALE: NTS



6
L.1

CONIFEROUS TREE PLANTING
SCALE: NTS



CLIENT

OTTAWA COMMUNITY HOUSING

CONSULTANTS

ARCHITECTS: **CSV ARCHITECTS**
sustainable design - conception - écologie
413.564.8118 195 O'Connor Street, Suite 100
Ottawa, Ontario K2P 2P3

CIVIL ENGINEERS: **McINTOSH PERRY**

SURVEYORS: **McINTOSH PERRY SURVEYING INC.**
3340 Drummond St., 5A, R.R. #7, Perth, ON K7H 3C9
Tel: 613-267-6524 Fax: 613-267-7992
www.mcintoshperry.com

LEGEND

- PROPOSED SOD
- PROPOSED CONCRETE SIDEWALK
- PROPOSED TYPE 1 CONCRETE PAVERS
- PROPOSED TYPE 2 CONCRETE PAVERS
- EXISTING TREE TO REMAIN
- EXISTING CEDAR HEDGE TO BE REMOVED
- EXISTING TREE TO BE REMOVED
- PROPOSED DECIDUOUS TREE
- PROPOSED CONIFEROUS TREE
- PROPOSED SHRUBS / ORNAMENTAL GRASSES
- TREE PROTECTION FENCE
- PROPOSED BOLLARD LIGHT
- PROPOSED BIKE PARKING SPACE
- PROPOSED BENCH
- PROPOSED TABLE & CHAIRS

7	SK ADDED TO PLANT LIST	06/04/2024	ML	JL
6	REVISED PER FORESTRY COMMENTS	05/29/2024	ML	JL
5	REVISED PER CITY COMMENTS	04/11/2024	ML	JL
4	ISSUED FOR BUILDING PERMIT	02/09/2024	ML	JL
3	ISSUED FOR 66% REVIEW	11/02/2023	ML	JL
2	ISSUED FOR SITE PLAN CONTROL RESUBMISSION	10/12/2023	ML	JL
1	ISSUED FOR SITE PLAN CONTROL	05/12/2023	ML	JL

No.	Issue	Date	DR	CK
		MM/DD/YY		

JAMES B. LENNOX & ASSOCIATES INC. LANDSCAPE ARCHITECTS
3332 CARLING AVE. OTTAWA, ONTARIO K2H 5A8
Tel. (613) 722-5168 Fax. (1866) 343-3942

PROJECT

SHEARWATER COURT NEW BUILDING
1 FINCH PRIVATE, OTTAWA ON

DRAWING

TREE CONSERVATION REPORT & LANDSCAPE PLAN- FULL SITE

STAMP

ASSOCIATION OF LANDSCAPE ARCHITECTS OF ONTARIO
MEMBER
JAMES B. LENNOX
613-722-5168

SCALE

AS SHOWN

START DATE

DECEMBER, 2022

PROJECT NO.

23CSV2318

DRAWING NO.

L.1

PLOT SIZE ARCH-D