


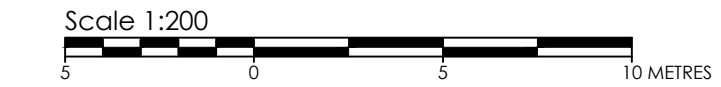
ASSOCIATION OF ONTARIO  
LAND SURVEYORS  
PLAN SUBMISSION FORM  
V-21203



THIS PLAN IS NOT VALID  
UNLESS IT IS AN EMBOSSED  
ORIGINAL COPY  
ISSUED BY THE SURVEYOR  
In accordance with  
Regulation 1026, Section 29(3)

© Copyright 2022 Stantec Geomatics Ltd. The reproduction, alteration or use of this REPORT in whole or in part without the express permission of Stantec Geomatics Ltd. is STRICTLY PROHIBITED.

**SURVEYOR'S REAL PROPERTY REPORT**  
PART 1 - PLAN OF SURVEY  
**PART OF LOT 72**  
**REGISTERED PLAN 526**  
CITY OF OTTAWA



**METRIC CONVERSION**  
DISTANCES AND COORDINATES SHOWN ON THIS PLAN ARE IN METRES  
AND CAN BE CONVERTED TO FEET BY DIVIDING BY 0.3048.

**BEARING NOTE**  
BEARINGS ARE GRID, DERIVED FROM CAN-NET VRS NETWORK GPS OBSERVATIONS ON NCC HORIZONTAL CONTROL MONUMENTS 19773035 AND 19680191, CENTRAL MERIDIAN, 76° 30' WEST LONGITUDE MTM ZONE 9, NAD83 (ORIGINAL).

19773035 N:5006060.42 E:324898.04  
19680191 N:5033564.26 E:388064.94

FOR BEARING COMPARISONS, A ROTATION OF 0° 29' 40" COUNTER-CLOCKWISE HAS BEEN APPLIED TO BEARINGS ON P.P.1.

**ELEVATION NOTE**  
ELEVATIONS SHOWN HEREON ARE GEODETIC (CGVD-1928:1978) AND ARE DERIVED FROM THE CAN-NET NETWORK MONUMENT:  
OTTAWA ELEVATION=95.230.

**NOTE**  
THIS PLAN OF SURVEY IS TO BE READ IN CONJUNCTION WITH THE REPORT SUMMARY NOTED AS PART 2 HEREOF.  
THIS REPORT CAN ONLY BE UPDATED BY THIS OFFICE. NO ADDITIONAL PRINTS OF THIS ORIGINAL REPORT WILL BE ISSUED SUBSEQUENT TO THE DATE OF CERTIFICATION.  
ALL TIES ARE MINIMUM UNLESS OTHERWISE NOTED.  
ALL TIES TO CURVED BOUNDARY ARE RADIAL TO ARC.  
RISK OF UNDERGROUND SERVICES, MONUMENTATION PLANTED ACCORDINGLY.

**PART 2**  
This Report was prepared for HP URBAN INC. and the undersigned accepts no responsibility for the use by other parties.  
1. **REGISTERED RIGHTS-OF-WAY/EASEMENTS**  
No rights-of-way or easements were found to be registered against the subject property.  
2. **PROPERTY IMPROVEMENTS**  
There is a 1 1/2 storey dwelling with an attached garage situate wholly within the subject lands. There are fences and hedges along the easterly, rear or southerly and westerly property boundaries. Note the location of overhead wires running along the rear of the property. see Part 1 (Plan) of this Report of details.  
3. **COMPLIANCE WITH MUNICIPAL ZONING BYLAWS**  
Compliance is not certified by this report.


**REVISION NOTE**  
THIS PLAN WAS UPDATED ON SEPTEMBER 25, 2024 WITH ADDITIONAL TOPOGRAPHICAL INFORMATION.

DATE \_\_\_\_\_ FRANCIS LAU  
ONTARIO LAND SURVEYOR

**SURVEYOR'S CERTIFICATE**  
I CERTIFY THAT:  
1. THIS SURVEY AND PLAN ARE CORRECT AND IN ACCORDANCE WITH THE SURVEYS ACT.  
THE SURVEYORS ACT AND THE REGULATIONS MADE UNDER THEM.  
2. THE SURVEY WAS COMPLETED ON THE 16th DAY OF MARCH, 2022.

DATE \_\_\_\_\_ FRANCIS LAU  
ONTARIO LAND SURVEYOR

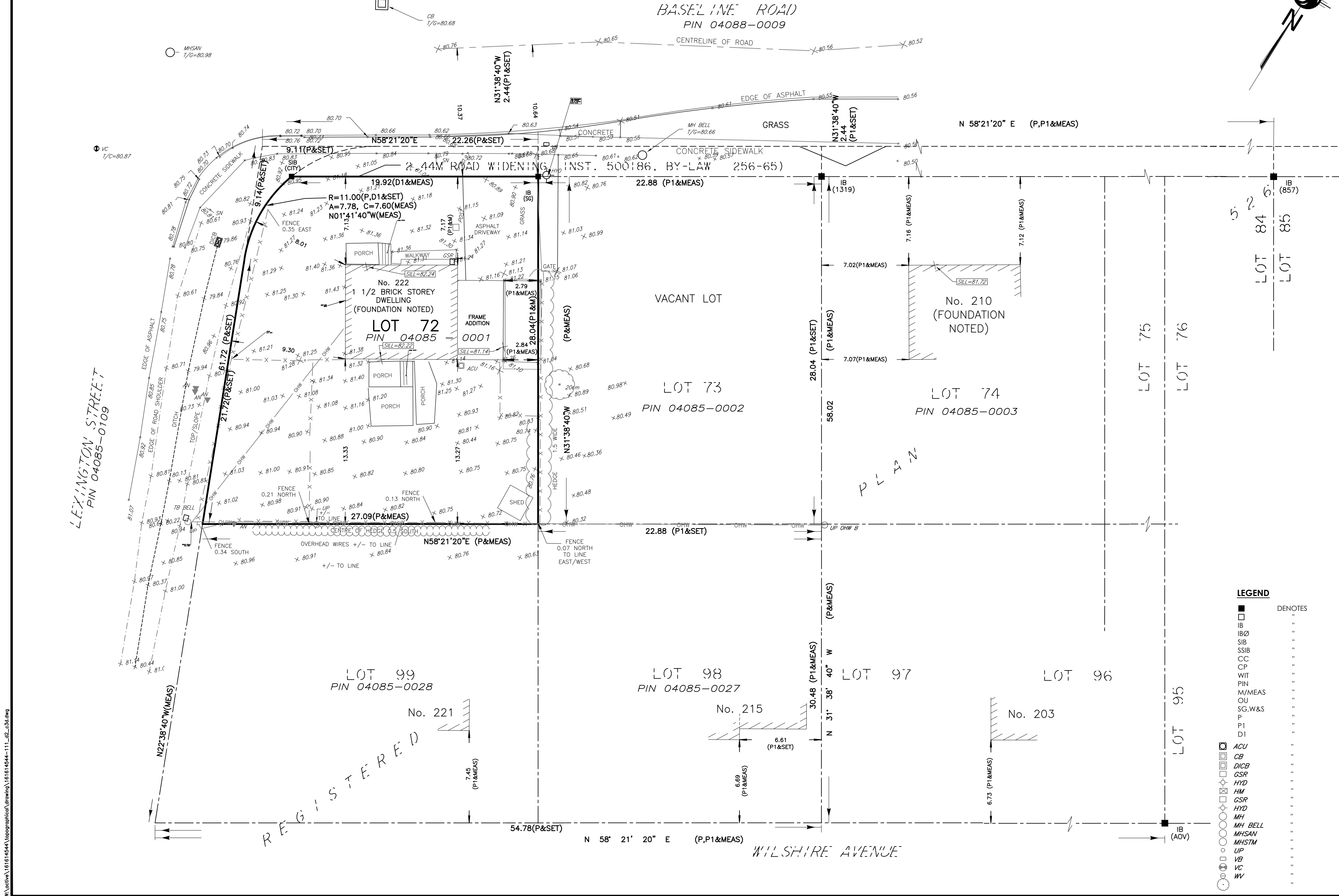
SRO MAP COORD.=366424.35, 5026155.04



**Stantec Geomatics Ltd.**  
CANADA LANDS SURVEYORS  
ONTARIO LAND SURVEYORS  
1331 CLYDE AVENUE, SUITE 400  
OTTAWA, ONTARIO, K2C 3G4  
TEL. 613.722.4420  
stantec.com

DRAWN: TMT CHECKED: CK PM: FL FIELD: CA PROJECT No.: 161614544-111

This plan was signed with a scanned signature as a result of the Emergency Order related to the COVID-19 pandemic.



**LEGEND**

■	DENOTES
□	FOUND MONUMENTS
IB	SET MONUMENTS
IBO	IRON BAR
SIB	ROUND IRON BAR
SSIB	STANDARD IRON BAR
CC	SHORT STANDARD IRON BAR
CP	CUT CROSS
WIT	CONCRETE PIN
PIN	WITNESS
MJ&MEAS	PROPERTY IDENTIFICATION NUMBER
OU	MEASURED
SG,W&S	ORIGIN UNKNOWN
P	STANTEC GEOMATICS LTD.
P1	REGISTERED PLAN 526
D1	PLAN BY SG DATED AUGUST 10, 2020
ACU	CR507927
CB	AIR CONDITIONING UNIT
DICB	CATCH BASIN
GSR	DITCH INLET CATCH BASIN
HYD	GAS SERVICE REGULATOR
HM	FIRE HYDRANT
GSR	FIRE HYDRANT
HYD	HYDRO METER
MH	MAINTENANCE HOLE UNIDENTIFIED
MH BELL	MAINTENANCE HOLE BELL
MHSAN	MAINTENANCE HOLE SANITARY
MHSTM	MAINTENANCE HOLE STORM
UP	UTILITY POLE
VB	VALVE BOX
VC	VALVE CHAMBER
WV	WATER VALVE
○	TREE DECIDUOUS