

1 LANDSCAPE PLAN  
L.1 SCALE 1:75

- GENERAL NOTES:**
- IT IS THE RESPONSIBILITY OF THE APPROPRIATE CONTRACTOR OR OFFICIAL TO REPORT ANY ERRORS, OMISSIONS OR DISCREPANCIES ON THIS PLAN WITH ACTUAL SITE CONDITIONS TO THE LANDSCAPE ARCHITECT BEFORE PROCEEDING WITH CONSTRUCTION.
  - THE CONTRACTOR IS TO NOTIFY ALL UTILITY COMPANIES AND AUTHORITIES PRIOR TO ANY EXCAVATION AND ASCERTAIN LOCATIONS OF UNDERGROUND SERVICES.
  - THE CONTRACTOR IS TO REINSTATE ALL AREAS AND ITEMS DAMAGED AS A RESULT OF CONSTRUCTION ACTIVITY.
  - THE CONTRACTOR IS TO COMPLY WITH ALL PERTINENT CODES AND BY-LAWS.
  - THE CONTRACTOR IS TO MAINTAIN A POSITIVE SURFACE RUN-OFF THROUGHOUT THE ENTIRE CONSTRUCTION PERIOD.
  - THE LANDSCAPE ARCHITECT IS NOT RESPONSIBLE FOR SUBSURFACE CONDITIONS.
  - THE CONTRACTOR IS TO IDENTIFY ALL EXISTING TREES TO REMAIN ON SITE WITH THE LANDSCAPE ARCHITECT PRIOR TO CONSTRUCTION.
  - THE CONTRACTOR IS TO STAKE THE PROPOSED LOCATION OF ALL PLANT MATERIAL IN CONJUNCTION WITH THE LANDSCAPE ARCHITECT PRIOR TO EXCAVATION.
  - MINIMUM DISTANCES FOR SELECTED DECIDUOUS TREES ARE AS FOLLOWS:
    - BUILDING FOUNDATIONS - 7.5M
    - SIDEWALKS - 1.5M
    - PUBLIC STREETS - 2.5M
    - UNDERGROUND INFRASTRUCTURE - 2.0M
  - ALL TREES WITHIN 1M OF UNDERGROUND UTILITY TRENCHES ARE TO BE EXCAVATED BY HAND.
  - REMOVE ALL PROTECTIVE WRAPPING FROM TREE TRUNKS AFTER INSTALLATION.
  - STAKING OF TREES SHALL ONLY BE PERFORMED IF NECESSARY.
  - ENSURE THAT MULCH IS PULLED BACK A MINIMUM DISTANCE OF 75MM FROM BASE OF TREE TRUNK.

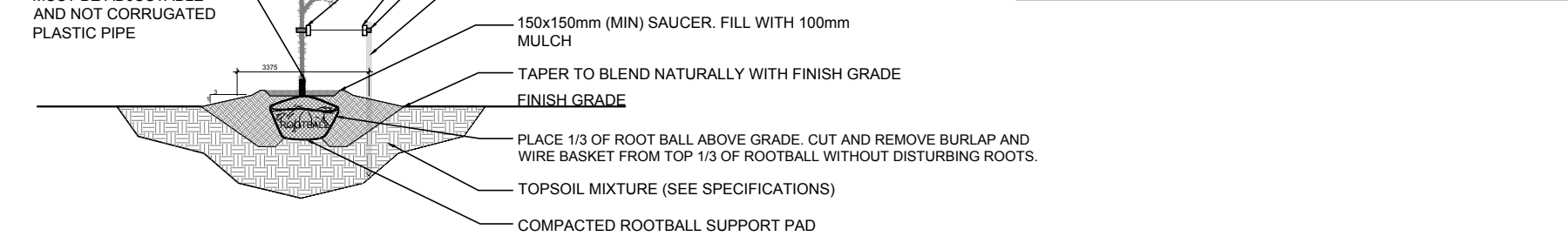
**PROPOSED PLANT LIST**

KEY	QTY	BOTANICAL NAME	COMMON NAME	SIZE	CONDITION	SPACING
<b>TREES</b>						
*SB	1	<i>Amelanchier canadensis</i>	Shadblow Serviceberry	50mm cal.	B&B	
<b>SHRUBS DECIDUOUS</b>						
*Cs	4	<i>Cornus sericea</i> 'Farrow' Arctic Fire	Red Twig Dogwood	600mm ht.	Potted	1500mm o.c.
Ha	9	<i>Hydrangea arborescens</i> 'Annabelle'	Annabelle Hydrangea	800mm ht.	Potted	800mm o.c.
*Ra	6	<i>Rhus aromatica</i>	Fragrant Sumac	600mm ht.	Potted	1000mm o.c.
*Sj	8	<i>Spiraea japonica</i> 'Anthony Waterer'	Spiraea 'Anthony Waterer'	800mm ht.	Potted	1000mm o.c.
<b>SHRUBS CONIFEROUS</b>						
Pm	4	<i>Pinus mugo</i> 'Mughus'	Mugo Pine	600mm spr.	Potted	1200mm o.c.
Tm	3	<i>Taxus media</i> 'Densiformis'	Dense Spreading Yew	600mm spr.	Potted	900mm o.c.
*TO	9	<i>Thuja occidentalis</i> 'Fastigiata'	Pyramidal Cedar	1200mm ht.	Potted	1250mm o.c.
<b>PERENNIALS</b>						
aa	9	<i>Astilbe x arendsi</i> 'Bridal Veil'	Bridal Veil Astilbe	250mm pot.	Potted	400 mm o.c.
ca	2	<i>Calamagrostis x acutiflora</i> 'Karl Foerster'	Karl Foerster Grass	250mm pot.	Potted	800 mm o.c.
hg	9	<i>Heuchera x 'Georgia Peach'</i>	Georgia Peach Coral Bells	100mm pot.	Potted	400 mm o.c.
*rf	16	<i>Rudbeckia fulgida</i> 'Goldsturm'	Goldsturm Black-Eyed Susan	100mm pot.	Potted	400 mm o.c.
sn	15	<i>Salvia nemorosa</i> 'Blue Hill'	Blue Hill Meadow Sage	100mm pot.	Potted	400 mm o.c.

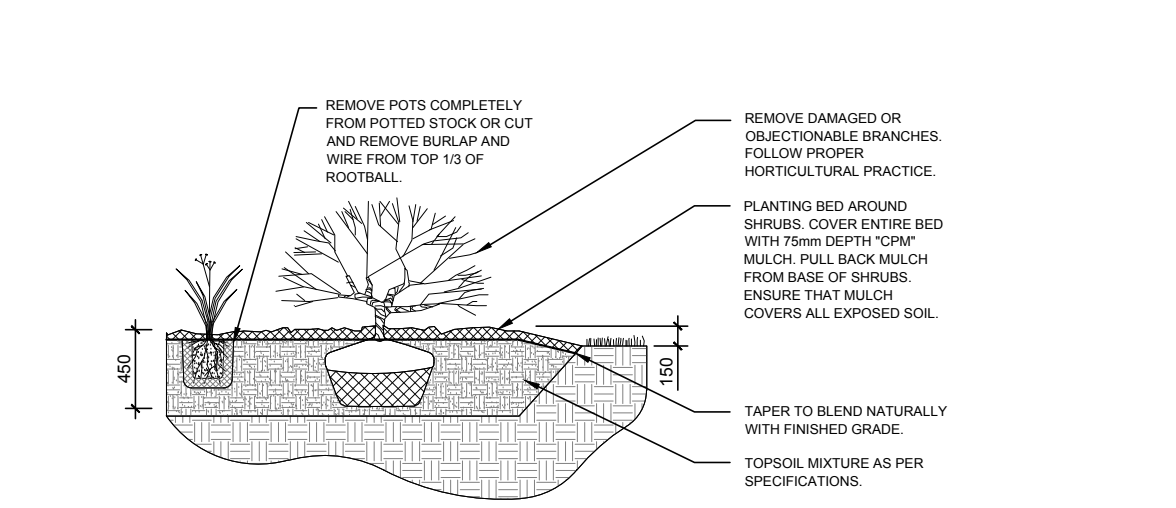
\*INDICATES NATIVE SPECIES. ALL PLANT MATERIAL IS PROPOSED ON PRIVATE PROPERTY

**SURVEYOR'S REAL PROPERTY REPORT  
PART 1 - PLANT OF SURVEY**

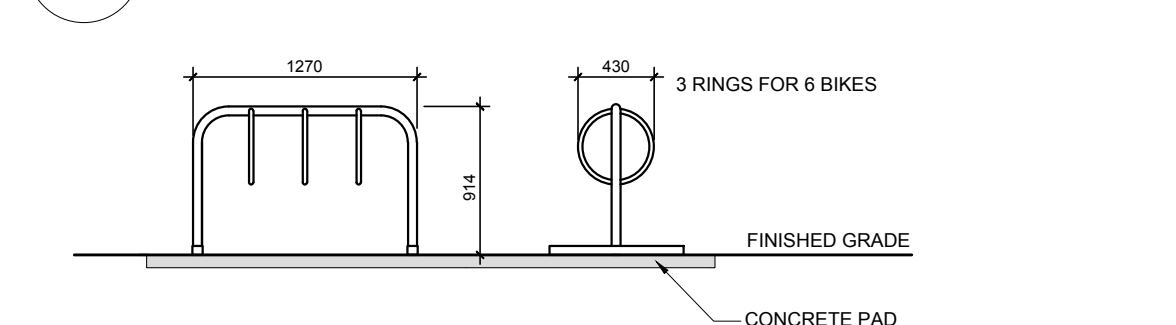
**PART OF LOT 72  
REGISTERED PLAN 526  
CITY OF OTTAWA**



**2 DECIDUOUS TREE PLANTING**  
L.1 SCALE: NTS



**3 SHRUB / ORNAMENTAL GRASS / PERENNIAL PLANTING**  
L.1 SCALE: NTS



**4 THREE (3) RING BIKE RACK FOR SIX (6) BIKES**  
L.1 SCALE: NTS



**40 YEAR CANOPY CALCULATION:**

-691 m2 site area
-1 small tree proposed
=7m2 canopy cover =1% canopy cover
*Small tree calculated at 3m spread

KEY PLAN: NTS

**CLIENT**  
HP URBAN INC.  
2405 ST. LAURENT BOULEVARD,  
UNIT P, OTTAWA, ONTARIO K1G 5B4

**CONSULTANTS**  
**ARCHITECTS:**  
BRYDEN GIBSON ARCHITECTS INCORPORATED  
1066 Somerset Street West, Suite 200, Ottawa, Ontario, K1V 4T3  
Telephone: (613) 724-5914 | Email: arch@brydengibson.com

**CIVIL ENGINEERS:**  
T.L. Mak Engineering Consultants Ltd.  
1455 Youville Drive, Suite 218  
Ottawa, ON, K1C 6Z7  
Tel: 613-837-5516 | Fax: 613-837-5277  
E-mail: tlmake@telnet.ca

**SURVEYORS:**  
1301 Chapel Avenue, Suite 400,  
Ottawa, Ontario K2C 4S4  
PHONE NUMBER:  
#(613) 722-4659

**LEGEND**

- 20m<sup>3</sup> SOIL VOLUME AT A 1.5m DEPTH
- PROPOSED SHRUBS/GRASSES/PERENNIALS
- PROPOSED DECIDUOUS TREE
- PROPOSED SOD
- PROPOSED RIVERSTONE
- PROPOSED PRECAST CONCRETE PAVERS
- EXISTING CONCRETE SIDEWALK
- PROPOSED CONCRETE
- PROPERTY LINE
- BUILDING 4.5m OFFSET
- BALCONY OVERHANG FROM BUILDING

1	ISSUED FOR SITE PLAN CONTROL	05/07/2025	ML	JL
No.	Issue	Date	DR	CK

**JAMES B. LENNOX & ASSOCIATES INC.**  
**LANDSCAPE ARCHITECTS**  
3332 CARLING AVE. OTTAWA, ONTARIO K2H 5A8  
Tel. (613) 722-5168 Fax. (1866) 343-3942

**PROJECT**  
PROPOSED FOUR STOREY BUILDING  
222 Baseline Road, Ottawa, ON

**DRAWING**  
LANDSCAPE PLAN

**STAMP**

**SCALE**  
AS SHOWN

**START DATE**  
APRIL, 2025

**PROJECT NO.**  
25MIS2527

**DRAWING NO.**  
L.1

**PLOT SIZE ARCH-D**