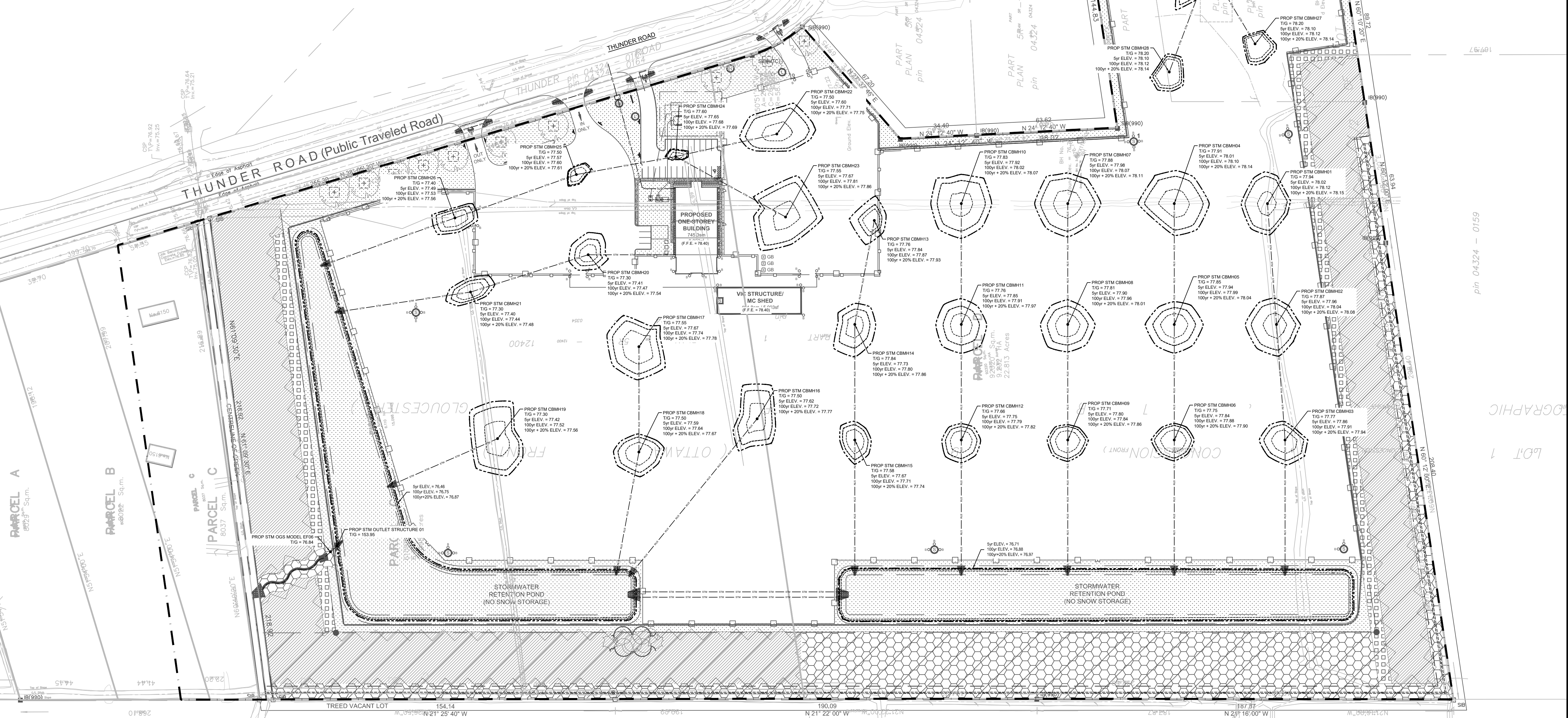


Structure	TG	5yr Elev.	Depth (m)	Volume (m3)	100yr Elev.	Depth (m)	Volume (m3)	100yr+20% Elev.	Depth (m)	Volume (m3)
CBMH01	77.94	78.02	0.08	2	78.12	0.18	17	78.15	0.21	31
CBMH02	77.87	77.96	0.09	2	78.04	0.17	14	78.08	0.21	28
CBMH03	77.77	77.86	0.09	2	77.91	0.05	7	77.94	0.08	13
CBMH04	77.91	78.01	0.10	3	78.10	0.19	26	78.14	0.23	45
CBMH05	77.85	77.94	0.09	3	77.99	0.14	10	78.04	0.19	24
CBMH06	77.75	77.84	0.09	2	77.88	0.13	6	77.90	0.15	10
CBMH07	77.88	77.98	0.10	3	78.07	0.19	22	78.11	0.23	40
CBMH08	77.81	77.90	0.09	2	77.96	0.15	10	78.01	0.20	24
CBMH09	77.71	77.80	0.09	2	77.84	0.13	5	77.88	0.15	9
CBMH10	77.83	77.92	0.09	2	78.02	0.19	18	78.07	0.24	35
CBMH11	77.76	77.85	0.09	2	77.91	0.15	10	77.97	0.21	26
CBMH12	77.66	77.75	0.09	2	77.79	0.13	5	77.82	0.16	8
CBMH13	77.76	77.84	0.08	1	77.87	0.11	3	77.93	0.17	11
CBMH14	77.64	77.73	0.09	2	77.80	0.16	9	77.86	0.22	23
CBMH15	77.58	77.67	0.09	2	77.71	0.13	5	77.74	0.16	9
CBMH16	77.50	77.62	0.12	2	77.72	0.22	11	77.77	0.27	21
CBMH17	77.55	77.67	0.12	5	77.74	0.19	22	77.78	0.23	38
CBMH18	77.50	77.59	0.09	3	77.64	0.14	9	77.67	0.17	16
CBMH19	77.30	77.42	0.12	5	77.52	0.22	27	77.56	0.26	44
CBMH20	77.30	77.41	0.11	1	77.47	0.17	6	77.54	0.24	16
CBMH21	77.30	77.40	0.10	2	77.44	0.14	4	77.48	0.18	8
CBMH22	77.50	77.60	0.10	2	77.71	0.21	22	77.75	0.25	41
CBMH23	77.55	77.67	0.12	4	77.81	0.26	41	77.86	0.31	67
CBMH24	77.60	77.65	0.05	0	77.68	0.08	1	77.69	0.09	1
CBMH25	77.50	77.57	0.07	1	77.60	0.10	1	77.61	0.11	2
CBMH26	77.40	77.49	0.09	2	77.53	0.13	4	77.56	0.16	8
CBMH27	77.79	77.88	0.09	1	77.93	0.14	3	78.00	0.21	11
CBMH28	77.82	77.91	0.09	1	77.96	0.14	7	78.02	0.20	18
CBMH29	77.76	77.89	0.13	8	77.98	0.22	39	78.01	0.25	61
Pond No.01 (North)		76.71		1080	76.75		3963	76.87		4728
Pond No.01 (South)		76.46		2159	76.88		1967	76.97		2424
Pond No.02		76.80		350	77.02		677	77.12		843



APPROVED
By Adam Brown at 11:58 am, May 12, 2025

ADAM BROWN
MANAGER, DEVELOPMENT REVIEW - RURAL
PLANNING, REAL ESTATE & ECONOMIC DEVELOPMENT
DEPARTMENT, CITY OF OTTAWA

USE AND INTERPRETATION OF DRAWINGS

GENERAL CONDITIONS OF THE CONTRACT FOR CONSTRUCTION ARE PART OF THE CONTRACT DOCUMENTS AND DESCRIBE THE WORK AND INTENT OF THE DRAWING. THE CONTRACT DOCUMENTS INCLUDE BUT NOT LIMITED TO THE DRAWINGS, BUT ALSO THE OWNER-CONTRACTOR AGREEMENTS, CONDITIONS OF THE CONTRACT, THE SPECIFICATIONS, ADDENDUMS AND MODIFICATIONS ISSUED AFTER EXECUTION OF THE CONTRACT. THESE CONTRACT DOCUMENTS ARE COMPLEMENTARY, AND WHAT IS REQUIRED BY ANY ONE SHALL BE BINDING AS REQUIRED BY ALL. WORK NOT COMPLETELY DELINEATED HEREON SHALL BE CONSTRUCTED OF THE SAME MATERIALS AND INSTALLED SIMILARLY AS WORK SHOWN MORE COMPLETELY ELSEWHERE IN THE CONTRACT DOCUMENTS.

BY USE OF THE DRAWINGS FOR CONSTRUCTION OF THE PROJECT, THE OWNER CONFIRMS THAT HE HAS REVIEWED AND APPROVED THE DRAWINGS. THE CONTRACTOR CONFIRMS THAT HE HAS NOTED THE SITE, FAMILIARIZED HIMSELF WITH THE LOCAL CONDITIONS, VERIFIED FIELD DIMENSIONS AND CORRELATED HIS OBSERVATIONS WITH THE REQUIREMENTS OF THE CONTRACT DOCUMENTS.

AS INSTRUMENTS OF SERVICE, ALL DRAWINGS, SPECIFICATIONS, CAD FILES OR OTHER ELECTRONIC MEDIA AND COPIES THEREOF FURNISHED BY THE ENGINEER ARE HIS PROPERTY. THEY ARE TO BE USED ONLY FOR THIS PROJECT AND ARE NOT TO BE USED ON ANY OTHER PROJECT, INCLUDING REPEATS OF THE PROJECT. CHANGES TO THE DRAWINGS MAY ONLY BE MADE BY THE ENGINEER.

UNLESS THE REVISION TITLE IS ISSUED FOR CONSTRUCTION, THESE DRAWINGS SHALL BE CONSIDERED PRELIMINARY AND SHALL NOT BE USED AS A CONSTRUCTION DOCUMENT.

THESE DRAWINGS ILLUSTRATE THE WORK TO BE DONE. THE ENGINEER IS NOT RESPONSIBLE FOR THE MEANS, METHODS, TECHNIQUES, SEQUENCES, AND PROCEDURES USED TO DO THE WORK, OR THE SAFETY ASPECTS OF CONSTRUCTION, AND NOTHING ON THESE DRAWINGS EXPRESSED OR IMPLIED CHANGES THIS CONDITION. CONTRACTOR SHALL DETERMINE ALL CONDITIONS AT THE SITE AND SHALL BE RESPONSIBLE FOR KNOWING HOW THEY AFFECT THE WORK. SUBMITTAL OF A BID TO PERFORM THIS WORK IS A KNOWLEDGE OF THE RESPONSIBILITIES, AND THAT THEY HAVE BEEN FULLY CONSIDERED IN PLANNING OF THE WORK, AND THE BID PRICE. NO CLAIMS FOR EXTRA CHARGES DUE TO THESE CONDITIONS WILL BE FORTHCOMING.

UNAUTHORIZED CHANGES

IN THE EVENT THE CLIENT, THE CLIENT'S CONTRACTORS OR SUBCONTRACTORS, OR ANYONE FOR WHOM THE CLIENT IS LEGALLY LIABLE MAKES OR PERMITS TO BE MADE ANY CHANGES TO ANY REPORTS, PLANS, SPECIFICATIONS OR OTHER CONSTRUCTION DOCUMENTS PREPARED BY LRL ASSOCIATES LTD. (LRL) WITHOUT OBTAINING LRL'S PRIOR WRITTEN CONSENT, THE CLIENT SHALL ASSUME FULL RESPONSIBILITY FOR THE RESULTS OF SUCH CHANGES. THEREFORE THE CLIENT AGREES TO WAIVE ANY CLAIM AGAINST LRL AND TO RELEASE LRL FROM ANY LIABILITY ARISING DIRECTLY OR INDIRECTLY FROM SUCH UNAUTHORIZED CHANGES.

IN ADDITION, THE CLIENT AGREES TO THE FULLEST EXTENT PERMITTED BY LAW, TO INDEMNIFY AND HOLD HARMLESS LRL FROM ANY DAMAGES, LIABILITIES OR COST, INCLUDING REASONABLE ATTORNEY'S FEES AND COST OF DEFENSE, ARISING FROM SUCH CHANGES.

IN ADDITION, THE CLIENT AGREES TO INCLUDE IN ANY CONTRACTS FOR CONSTRUCTION APPROPRIATE LANGUAGE THAT PROHIBITS THE CONTRACTOR OR ANY SUBCONTRACTORS OF ANY TIER FROM MAKING ANY CHANGES OR MODIFICATIONS TO LRL'S CONSTRUCTION DOCUMENTS WITHOUT THE PRIOR WRITTEN APPROVAL OF LRL AND THAT FURTHER REQUIRES THE CONTRACTOR TO INDEMNIFY BOTH LRL AND THE CLIENT FROM ANY LIABILITY OR COST ARISING FROM SUCH CHANGES MADE WITHOUT SUCH PROPER AUTHORIZATION.

GENERAL NOTES

EXISTING SERVICES AND UTILITIES SHOWN ON THESE DRAWINGS ARE TAKEN FROM THE BEST AVAILABLE RECORDS, BUT MAY NOT BE COMPLETE OR TO DATE. CONTRACTOR SHALL VERIFY IN FIELD FOR LOCATION AND ELEVATION OF PIPES AND CHECK WITH THE UTILITY COMPANIES BEFORE DIGGING OR PERFORMING WORK.

CONTRACTOR IS ADVISED TO COLLECT INFORMATION ON SOIL CONDITIONS BEFORE START OF CONSTRUCTION.

THE ENGINEER WAIVES ANY AND ALL RESPONSIBILITY AND LIABILITY FOR PROBLEMS WHICH ARISE FROM FAILURE TO FOLLOW THESE PLANS, SPECIFICATIONS AND THE DESIGN INTENT THEY CONVEY, OR FOR PROBLEMS WHICH ARISE FROM OTHERS' FAILURE TO OBTAIN AND/OR FOLLOW THE ENGINEER'S GUIDANCE WITH RESPECT TO ANY ERRORS, OMISSIONS, INCONSISTENCIES AMBIGUITIES OR CONFLICTS WHICH ARE ALLEGED.

CONTRACTOR TO VERIFY ALL DIMENSIONS AND NOTIFY THE ENGINEER OF ANY DISCREPANCIES BEFORE WORK COMMENCES. DO NOT SCALE DRAWINGS.

05 ISSUED FOR APPROVAL V.J. 07 MAR 2025

04 ISSUED FOR APPROVAL V.J. 05 DEC 2024

03 ISSUED FOR APPROVAL V.J. 16 AUG 2024

02 ISSUED FOR APPROVAL V.J. 24 MAY 2023

01 ISSUED FOR APPROVAL V.J. 25 NOV 2021

No.	REVISIONS	BY	DATE
-----	-----------	----	------

NOT AUTHENTIC UNLESS SIGNED AND DATED

LRL
ENGINEERING | INGENIERIE
5430 Canotek Road | Ottawa, ON, K1J 9G2
www.lrl.ca | (613) 842-3434

CLIENT
AVENUE 31

DESIGNED BY:	DRAWN BY:	APPROVED BY:
V.J.	M.L.	V.J.

PROJECT
INDUSTRIAL PARK
6160 THUNDER RD AND 5368 BOUNDARY RD
OTTAWA, ON

DRAWING TITLE
STORMWATER MANAGEMENT PLAN

PROJECT NO.	DATE
200578	NOVEMBER 2020

NOTE:
REFER TO C000 FOR LEGEND AND GENERAL NOTES

C601