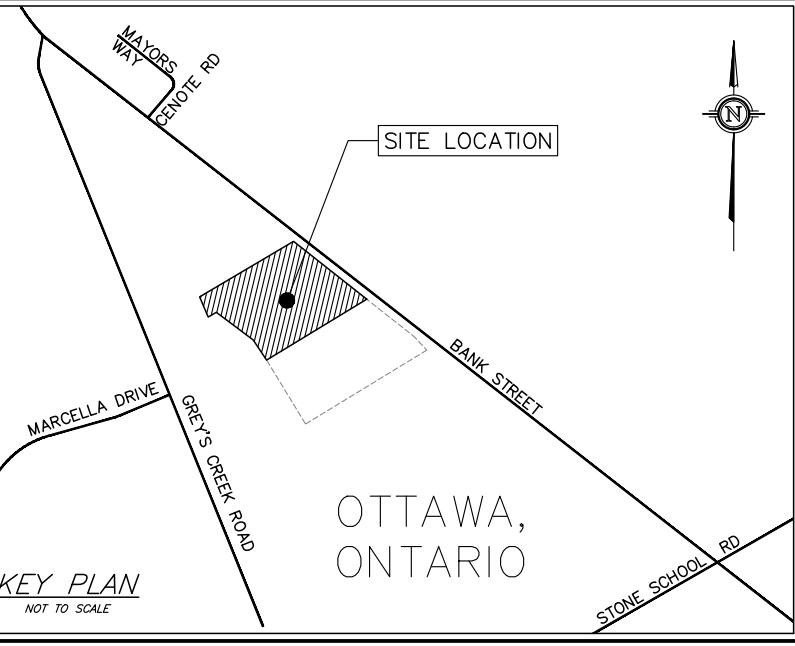


DRAWING NUMBER:  
230156-SER



DRAWING:  
SITE SERVICING PLAN

- GENERAL NOTES:
1. ALL DIMENSIONS ARE IN METRES, UNLESS OTHERWISE SPECIFIED: ALL ELEVATIONS ARE IN METRES AND ARE GEODETIC.
  2. GEODETIC INFORMATION WAS DERIVED FROM MONUMENT NO. 0011970U042.
  3. TBM = NAIL IN EXISTING HYDRO POLE. ELEVATION = 94.53.
  4. THIS IS NOT A LEGAL SURVEY. BOUNDARY INFORMATION WAS DERIVED FROM PLAN 4R-255/95, (SHIPMAN SURVEYING FILE NUMBER: 10-7-9718; HORIZONTAL DATUM: MTM ZONE 9, NAD 83)
  5. CLIENT IS RESPONSIBLE FOR ACQUIRING ALL NECESSARY PERMITS.
  6. CONTRACTOR TO VERIFY THAT APPROPRIATE PERMITS HAVE BEEN ACQUIRED PRIOR TO ANY CONSTRUCTION.
  7. CONTRACTOR IS RESPONSIBLE FOR LOCATION AND PROTECTION OF UTILITIES.
  8. ALL DIMENSIONS TO BE VERIFIED ON SITE BY CONTRACTOR PRIOR TO CONSTRUCTION.
  9. THIS DRAWING IS NOT FOR CONSTRUCTION UNTIL ALL APPROVALS HAVE BEEN GRANTED.
  10. HYDRO SERVICE TO BE INSTALLED ACCORDING TO THE SPECIFICATIONS OF SERVICE PROVIDER AND THE MECHANICAL ENGINEER.
  11. ALL MATERIALS AND CONSTRUCTION TO BE IN ACCORDANCE WITH CITY OF OTTAWA STANDARDS AND ONTARIO PROVINCIAL STANDARDS AND SPECIFICATIONS.
  12. ANY CHANGES MADE TO THIS PLAN MUST BE VERIFIED AND APPROVED BY KOLLAARD ASSOCIATES, INC.
  13. THIS DRAWING IS PART OF KOLLAARD ASSOCIATES DESIGN REPORTS #230156.

REV	BY	DATE	DESCRIPTION
4	ARK	APR 16, 2025	REVISED FOR COMMENTS, DATE CORRECTED
3	ARK	JAN 10, 2025	REVISED FOR CITY COMMENTS
2	ARK	OCT 02, 2024	NO CHANGES TO THIS SHEET
1	ARK	SEPT 04, 2024	NO CHANGES TO THIS SHEET
0	ARK	JULY 31, 2024	SUBMITTED FOR SITE PLAN CONTROL

**K** Kollaard Associates  
Engineers

P.O. BOX 189, 210 PRESCOTT ST. (613) 860-0923  
KEMPVILLE, ONTARIO info@kollaard.ca  
KOG 1JO FAX (613) 258-0475  
http://www.kollaard.ca

CONSULTANTS:

H. AKEN SHIPMAN SURVEYING LTD. JAMES B. LENNON & ASSOCIATES INC.  
P.O. BOX 53, NORTH GOWER, ONT. R0A 2T0 LANDSCAPE ARCHITECTS  
TEL: (613) 725-5588 FAX: (613) 725-5588

URBAN PLANNING CONSULTING PROJECT MANAGEMENT  
P. H. Business Consulting  
188 Somerset Drive, Ottawa, Ontario K2H 4K1  
TEL: (613) 929-9999 www.urbanplanningconsulting.com

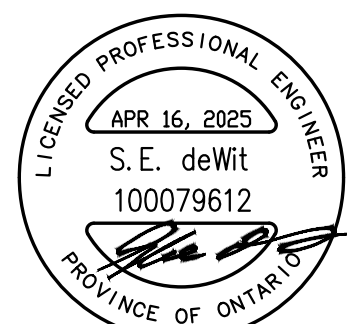
Castleglenn Consultants  
Engineers, Project Managers & Planners  
2460 Lancaster Road, Ottawa, ON K1B 4S5  
(TEL: 613) 721-4062 / (FAX: 613) 721-4053

CLIENT:  
CAMM WAREHOUSING AND RENTALS INC.

PROJECT:  
PROPOSED WAREHOUSE WITH OFFICE

LOCATION:  
6622 BANK STREET, OTTAWA, ON

DESIGNED BY: ARK  
CHECKED BY: SD  
DRAWN BY: ARK  
APPROVED BY: SD  
DATE: JULY 31, 2024  
SCALE: AS NOTED  
PROJECT NUMBER: 230156



© COPYRIGHT 2025  
KOLLAARD ASSOCIATES INCORPORATED

APPROVED  
By Adam Brown at 4:20 pm, May 06, 2025

ADAM BROWN  
MANAGER, DEVELOPMENT REVIEW - RURAL  
PLANNING, REAL ESTATE & ECONOMIC DEVELOPMENT  
DEPARTMENT, CITY OF OTTAWA

D07-12-24-0106

Plan No. 19195