

RELATED BY-LAWS:  
- TREE PROTECTION BY-LAW (No. 2020-340)

CRITICAL ROOT ZONE  
DBH x 10

CRITICAL ROOT ZONE  
DBH x 10

2400 OC MAX

DBH

1200 MIN

SOIL AND ROOT DISTURBANCE NOT PERMITTED

REFER TO THE TREE PROTECTION NOTES, FOUND ON THE PLANS AND/OR REPORT.

PRIOR TO ANY WORK ACTIVITY, THE PLAN AND THE INSTALLED FENCE MUST BE APPROVED BY CITY FORESTRY STAFF.

TREE PROTECTION FENCE SHALL BE ERRECTED TO PROTECT AND ENCLOSE THE CRITICAL ROOT ZONE (CRZ = DBH x 10). SEE PLAN FOR LOCATION.

TREE PROTECTION TO REMAIN IN PLACE AND BE MAINTAINED IN GOOD CONDITION UNTIL THE SOD/SEED IS STARTED. REMOVE FENCE AT THIS TIME.

MEASURED FROM OUTSIDE EDGE AT BASE OF TRUNK

TREE PROTECTION SIGNAGE AS PER CITY STANDARD

TREE PROTECTION FENCING MUST BE CONSTRUCTED OF RIGID OR FRAMED MATERIALS. eg.  
- MODULOC - STEEL  
- PLYWOOD HOARDING, OR  
- SNOW FENCE ON 2x4 FRAME.

POSTS SHALL BE MAX. 2.4m APART, AND POSTS SHALL BE SECURED TO PREVENT ALTERATIONS TO THE FENCE LOCATION.

ALL SUPPORTS AND BRACING MUST BE PLACED OUTSIDE OF THE CRZ, AND INSTALLATION MUST MINIMIZE DAMAGE TO EXISTING ROOTS

TREE PROTECTION FENCE

D1

NOTE:  
THE POSITION OF ALL POLE LINES, CONDUITS, WATERMAINS, SEWERS AND OTHER UNDERGROUND AND OVERGROUND UTILITIES AND STRUCTURES IS NOT NECESSARILY SHOWN ON THE CONTRACT DRAWINGS, AND WHERE SHOWN, THE ACCURACY OF THE POSITION OF SUCH UTILITIES AND STRUCTURES IS NOT GUARANTEED. BEFORE STARTING WORK, DETERMINE THE EXACT LOCATION OF ALL SUCH UTILITIES AND STRUCTURES AND ASSUME ALL LIABILITY FOR DAMAGE TO THEM.

Owner:  
2317916 ONT INC.  
2081 MERIVALE ROAD  
Ottawa, ON K2G 1G9

NOT FOR  
CONSTRUCTION

No.	REVISION	DATE	BY
6.	RE-ISSUED FOR SPC	MAY 5/25	RGJ
5.	RE-ISSUED FOR SPC	OCT 11/24	RGJ
4.	RE-ISSUED FOR SPC	SEPT 6/24	RGJ
3.	RE-ISSUED FOR SPC	AUG 20/24	RGJ
2.	RE-ISSUED FOR SPC	JUN 26/24	RGJ
1.	ISSUED FOR SPC	JUN 13/23	RGJ

No.	REVISION	DATE	BY
6.	RE-ISSUED FOR SPC	MAY 5/25	RGJ
5.	RE-ISSUED FOR SPC	OCT 11/24	RGJ
4.	RE-ISSUED FOR SPC	SEPT 6/24	RGJ
3.	RE-ISSUED FOR SPC	AUG 20/24	RGJ
2.	RE-ISSUED FOR SPC	JUN 26/24	RGJ
1.	ISSUED FOR SPC	JUN 13/23	RGJ

SCALE  
1:150  
0 2 4 6

DESIGN  
MEL  
CHECKED  
RGJ  
DRAWN  
MEL  
CHECKED  
RGJ  
APPROVED  
RGJ

FOR REVIEW ONLY  
MAY 5/25  
ASSOCIATION OF LANDSCAPE ARCHITECTS  
ONTARIO

NOVATECH  
Engineers, Planners & Landscape Architects  
Suite 200, 240 Michael Cowpland Drive  
Ottawa, Ontario, Canada K2M 1P6  
Telephone (613) 254-9643  
Facsimile (613) 254-5867  
Website novatech-eng.com

122186-TCR1

LOCATION  
CITY OF OTTAWA  
47 BEECHWOOD AVENUE

DRAWING NAME  
TREE CONSERVATION PLAN 1  
EXISTING CONDITION & TREE COVER

PART OF LOTS 1, 2, 3, & 4 (NORTH BEECHWOOD AVE.)  
LOT 1 AND PART OF LOT 2 (WEST DOUGLAS AVE.)  
REGISTERED PLAN T4  
CITY OF OTTAWA

PROJECT NO.  
122186-00  
REV  
REV # 6  
DRAWING NO.  
122186-TCR1

## EXISTING TREE CANOPY COVER:

EXISTING CANOPY COVERAGE - As surveyed at site in 2023				
	AVERAGE EXISTING SPREAD	CANOPY COVERAGE EXISTING PER TREE	QUANTITY OF TREES	TOTAL EXISTING CANOPY COVERAGE (m²)
Existing Large Deciduous trees (tree #6)	10m	79	1	79
Existing Medium Deciduous trees (tree #2, 4, and 5)	6m	28	3	84
Existing Small Deciduous trees (tree #1 and 3)	4.5m	16	2	32
Existing Coniferous trees on site (tree #7)	5m	20	1	20
TOTAL EXISTING CANOPY COVERAGE (m²):				215
1. Area of a circle = (r x r) x π				
2. Canopy coverage per tree calculation: (average mature spread/2) x (average mature spread/2) x π				
3. Canopy calculations do not include Trees 8, 9 and 10 because they are on the neighbouring property.				

NORTH

LEGEND  
EXISTING TREE TO REMAIN, SYMBOL SIZE REFLECTS CRZ  
EXISTING TREE TO REMOVE, SYMBOL SIZE REFLECTS CRZ  
TREE PROTECTION FENCE

KEY PLAN  
N.T.S.

OWNER  
2317916 ONT INC.  
2081 MERIVALE ROAD  
OTTAWA, ON, K2G 1G9

ARCHITECT  
PROJECT 1 STUDIO  
260 ST. PATRICK ST., SUITE 300  
OTTAWA, ON, K1N 5K5

PLANNER  
NOVATECH  
240 MICHAEL COWPLAND DRIVE, SUITE 200  
OTTAWA, ON, K2M 1P6

LANDSCAPE ARCHITECT  
NOVATECH  
240 MICHAEL COWPLAND DRIVE, SUITE 200  
OTTAWA, ON, K2M 1P6

CIVIL ENGINEER  
STANTEC  
300 - 1331 CLYDE AVENUE  
OTTAWA, ON, K2C 3G4

SURVEYOR  
ANNIS O'SULLIVAN VOLLEBEKK LTD.  
14 CONCOURSE GATE, SUITE 500  
OTTAWA, ON, K2E 7S6

## TREE PROTECTION

Implement the following protection measures for retained trees, both on site and on adjacent sites, prior to any work activity, including tree removal. Maintain tree protection fence in place and in good condition for the duration of site works:

- The Landscape Architect or Certified Arborist is to determine the location of the tree protection fencing and detail it on any associated plans for the site (e.g. tree conservation report, tree disclosure report, etc.).
- Under the guidance of a Landscape Architect or Certified Arborist, erect a fence at the critical root zone (CRZ) of trees. Diameter at breast height (DBH) is the trunk diameter, measured at 1.3m height on the tree trunk. The CRZ is calculated as DBH x 10. Refer to the Tree Protection Fence detail.
- Refer to the Tree Protection Plan for fence location. City Forestry Staff are to approve both the plan and the installed fence prior to work commencement.
- Do not place any material or equipment within 2m of the CRZ of any tree, including outhouses.
- Do not attach any signs, notices, or posters to any tree.
- Do not disturb, raise, or lower the existing grade within the CRZ without approval.
- Only tunnel or bore when digging within the CRZ of a tree. Hand work only where required within the CRZ; absolutely no machinery permitted.
- Do not damage the root system, trunk, or branches, or any tree.
- Do not extend hard surface or significantly change landscaping.
- Ensure that exhaust fumes from all equipment are directed away from any tree canopy.
- When trees marked for removal overlap with the CRZ of trees marked for preservation: cut roots at the edge of the CRZ and grind down stumps after tree removals, do not pull out stumps. Ensure there is not root pulling or disturbance of the ground within the CRZ.
- Prior to work taking place, notify and consult the Landscape Architect and City Forestry Staff if roots must be cut. Roots 20mm or larger should be cut at right angles with clean, sharp horticultural tools without tearing, crushing, or pulling. Refer to City of Ottawa Specification S.P. F-8011 Tree Protection, Excavation of Root Zone.
- If damaged or objectionable branches are observed, consult the Landscape Architect, before any work is conducted. Do not prune leaders. Do not prune more than 1/4 of crown.
- Set up a water and fertilizing program, if trees are being affected by site works, to the satisfaction of the Landscape Architect.
- The Landscape Architect is to prescribe mitigation measures if the protected fenced area must be reduced to facilitate construction. Measures may include the placement of plywood, wood chips, or steel plating over the roots for protection. City Forestry Staff are to approve said measures prior to fence movement.
- City of Ottawa By-law: Protects municipal trees and municipal natural areas in the City of Ottawa and trees on private property in the urban area of the City of Ottawa (2020-340).

EXISTING TREE INVENTORY:  
NOTE: EXISTING TREES (8, 9 AND 10) ARE OUTSIDE THE PROPERTY LINE. TREE LOCATIONS ARE SCHEMATIC ONLY.

No.	Botanical Name	Common Name	DBH (cm)	CRZ (m)	Condition	Owner	Remarks	Recomm.
1	<i>Acer platanoides</i>	Norway Maple	23.0	2.30	F	Client	Conflict	Remove
2	<i>Acer platanoides</i>	Norway Maple	25.0	2.50	F	Client	Conflict	Remove
3	<i>Acer negundo</i>	Manitoba Maple	20.0	2.00	F	Client	Conflict	Remove
4	<i>Acer negundo</i>	Manitoba Maple	25.0	2.50	F	Client	Conflict	Remove
5	<i>Acer negundo</i>	Manitoba Maple	25.0	2.50	F	Client	Conflict	Remove
6	<i>Syringa vulgaris</i>	Common Lilac	21.0	2.10	P	Client	Conflict - 6 stems - 7cm ea. Dead wood evident, low vigor, suffering lack of light, leafing	Remove
7	<i>Picea glauca</i>	White Spruce	20.0	2.00	F	Client	Conflict	Remove
8	<i>Tilia americana</i>	Basswood	20.0	2.00	VP	Neighbour	Presence of insects and disease; swollen areas on trunk; leader gone, decay evident in a number of places	Remove
9	<i>Pinus strobus</i>	White Pine	10.0	1.00	G	Neighbour		PROTECT
10	<i>Picea glauca</i>	White Spruce	20.0	2.00	G	Neighbour	Conflict	Remove

Legend

G Good  
F Fair  
P Poor  
VP Very Poor

Conflict  
Remove  
PROTECT

Remove due to conflict with construction.  
Remove due to tree health or invasive status.  
Protect trees as per contract details and specifications.

C:\temp\Asp\Publish - 27932\122186-TP.dwg, TCR1, May 05, 2025 - 2:23:30m, mlsat

PLAN12186-TP.dwg

#19043



RELATED BY-LAWS:  
- TREE PROTECTION BY-LAW (No. 2020-340)

CRITICAL ROOT ZONE  
DBH x 10

CRITICAL ROOT ZONE  
DBH x 10

2400 OC MAX

DBH

1200 MIN

SOIL AND ROOT DISTURBANCE NOT PERMITTED

PRIOR TO ANY WORK ACTIVITY, THE PLAN AND THE INSTALLED FENCE MUST BE APPROVED BY CITY FORESTRY STAFF.

TREE PROTECTION FENCE SHALL BE ERRECTED TO PROTECT AND ENCLOSE THE CRITICAL ROOT ZONE (CRZ = DBH x 10). SEE PLAN FOR LOCATION.

TREE PROTECTION TO REMAIN IN PLACE AND BE MAINTAINED IN GOOD CONDITION UNTIL THE SOD/ SEED IS TIMED. REMOVE FENCE AT THIS TIME.

MEASURED FROM OUTSIDE EDGE AT BASE OF TRUNK

TREE PROTECTION SIGNAGE AS PER CITY STANDARD

TREE PROTECTION FENCING MUST BE CONSTRUCTED OF RIGID OR FRAMED MATERIALS. eg.  
- MODULOC - STEEL  
- PLYWOOD HOARDING, OR  
- SNOW FENCE ON 2x4 FRAME.

POSTS SHALL BE MAX. 2.4m APART, AND POSTS SHALL BE SECURED TO PREVENT ALTERATIONS TO THE FENCE LOCATION.

ALL SUPPORTS AND BRACING MUST BE PLACED OUTSIDE OF THE CRZ, AND INSTALLATION MUST MINIMIZE DAMAGE TO EXISTING ROOTS

TREE PROTECTION FENCE

D1

PROPOSED & RETAINED TREE CANOPY COVER:

PROPOSED & RETAINED CANOPY COVERAGE AT MATURITY				
SIZE OF PROPOSED TREE	AVERAGE MATURE SPREAD	CANOPY COVERAGE PER TREE AT MATURITY (m <sup>2</sup> )	QUANTITY OF TREES	TOTAL PROPOSED CANOPY COVERAGE AT MATURITY (m <sup>2</sup> )
Deciduous - Small (less than 6m H)	5.0m	20	2	39
Deciduous - Medium (6m to 14m H)	11m	95	3	285
Deciduous - Large (15m+ H)	14m	154	3	452
TOTAL PROPOSED CANOPY COVERAGE (m <sup>2</sup> ):				786

1. Area of a circle = (r x r) x π

2. Canopy coverage per tree calculation: (average mature spread/2) x (average mature spread/2) x π

3. Canopy calculations do not include Trees 8, 9 and 10 because they are on the neighbouring property.

NORTH

NORTH

KEY PLAN  
N.T.S.

SITE

DURHAM  
RIDEAU  
BEECHWOOD  
SPRINGFIELD  
PUTMAN  
DOUGLAS  
LINCOLN  
CHARLEMAN  
BEECHWOOD  
BARRIETTE  
LAVALL  
CONESTOGA  
ALICE  
RACMAR  
AMBRUISE  
VANIER P.  
LENORE

LEGEND

EXISTING TREE TO REMAIN.  
SYMBOL SIZE REFLECTS CRZ

EXISTING TREE TO REMOVE.  
SYMBOL SIZE REFLECTS CRZ

TREE PROTECTION FENCE

OWNER  
2317916 ONT INC.  
2081 MERIVALE ROAD  
OTTAWA, ON, K2G 1G9

ARCHITECT  
PROJECT 1 STUDIO  
260 ST. PATRICK ST., SUITE 300  
OTTAWA, ON, K1N 5K5

PLANNER  
NOVATECH  
240 MICHAEL COWPLAND DRIVE, SUITE 200  
OTTAWA, ON, K2M 1P6

LANDSCAPE ARCHITECT  
NOVATECH  
240 MICHAEL COWPLAND DRIVE, SUITE 200  
OTTAWA, ON, K2M 1P6

CIVIL ENGINEER  
STANTEC  
300 - 1331 CLYDE AVENUE  
OTTAWA, ON, K2C 3G4

SURVEYOR  
ANNIS O'SULLIVAN VOLLEBEKK LTD.  
14 CONCOURSE GATE, SUITE 500  
OTTAWA, ON, K2E 7S6

TREE PROTECTION

Implement the following protection measures for retained trees, both on site and on adjacent sites, prior to any work activity, including tree removal. Maintain tree protection fence in place and in good condition for the duration of site works:

- The Landscape Architect or Certified Arborist is to determine the location of the tree protection fencing and detail it on any associated plans for the site (e.g. tree conservation report, tree disclosure report, etc.).
- Under the guidance of a Landscape Architect or Certified Arborist, erect a fence at the critical root zone (CRZ) of trees. Diameter at breast height (DBH) is the trunk diameter measured at 1.3m height on the tree trunk. The CRZ is calculated as DBH x 10. Refer to the Tree Protection Fence detail.
- Refer to the Tree Protection Plan for fence location. City Forestry Staff are to approve both the plan and the installed fence prior to work commencement.
- Do not place any material or equipment within 2m of the CRZ of any tree, including outhouses.
- Do not attach any signs, notices, or posters to any tree.
- Do not disturb, raise, or lower the existing grade within the CRZ without approval.
- Only tunnel or bore when digging within the CRZ of a tree. Hand work only where required within the CRZ; absolutely no machinery permitted.
- Do not damage the root system, trunk, or branches, or any tree.
- Do not extend hard surface or significantly change landscaping.
- Ensure that exhaust fumes from all equipment are directed away from any tree canopy.
- When trees marked for removal overlap with the CRZ of trees marked for preservation: cut roots at the edge of the CRZ and grind down stumps after tree removals, do not pull out stumps. Ensure there is not root pulling or disturbance of the ground within the CRZ.
- Prior to work taking place, notify and consult the Landscape Architect and City Forestry Staff if roots must be cut. Roots 20mm or larger should be cut at right angles with clean, sharp horticultural tools without tearing, crushing, or pulling. Refer to City of Ottawa Specification S.P. F-8011 Tree Protection, Excavation of Root Zone.
- If damaged or objectionable branches are observed, consult the Landscape Architect, before any work is conducted. Do not prune leaders. Do not prune more than 1/4 of crown.
- Set up a water and fertilizing program, if trees are being affected by site works, to the satisfaction of the Landscape Architect.
- The Landscape Architect is to prescribe mitigation measures if the protected fenced area must be reduced to facilitate construction. Measures may include the placement of plywood, wood chips, or steel plating over the roots for protection. City Forestry Staff are to approve said measures prior to fence movement.
- City of Ottawa By-law: Protects municipal trees and natural areas in the City of Ottawa and trees on private property in the urban area of the City of Ottawa (2020-340).

NOTE:  
THE POSITION OF ALL POLE LINES, CONDUITS, WATERMANS, SEWERS AND OTHER UNDERGROUND AND OVERGROUND UTILITIES AND STRUCTURES IS NOT NECESSARILY SHOWN ON THE CONTRACT DRAWINGS, AND WHERE SHOWN, THE ACCURACY OF THE POSITION OF SUCH UTILITIES AND STRUCTURES IS NOT GUARANTEED. BEFORE STARTING WORK, DETERMINE THE EXACT LOCATION OF ALL SUCH UTILITIES AND STRUCTURES AND ASSUME ALL LIABILITY FOR DAMAGE TO THEM.

Owner:  
2317916 ONT INC.  
2081 MERIVALE ROAD  
OTTAWA, ON K2G 1G9

NOT FOR  
CONSTRUCTION

No.	REVISION	DATE	BY
6.	RE-ISSUED FOR SPC	MAY 5/25	RGJ
5.	RE-ISSUED FOR SPC	OCT 11/24	RGJ
4.	RE-ISSUED FOR SPC	SEPT 6/24	RGJ
3.	RE-ISSUED FOR SPC	AUG 20/24	RGJ
2.	RE-ISSUED FOR SPC	JUN 26/24	RGJ
1.	ISSUED FOR SPC	JUN 13/23	RGJ

SCALE

1:150

DESIGN

MEL
CHECKED
RGJ
DRAWN
MEL
CHECKED
RGJ
APPROVED
RGJ

FOR REVIEW ONLY

NOVATECH

Engineers, Planners & Landscape Architects  
Suite 200, 240 Michael Cowpland Drive  
Ottawa, Ontario, Canada K2M 1P6

Telephone (613) 254-9643  
Facsimile (613) 254-5867  
Website www.novatech-eng.com

LOCATION  
CITY OF OTTAWA  
47 BEECHWOOD AVENUE

DRAWING NAME  
TREE CONSERVATION PLAN 2  
PROPOSED DEVELOPMENT & TREE COVER

PART OF LOTS 1, 2, 3, & 4 (NORTH BEECHWOOD AVE.)  
LOT 1 AND PART OF LOT 2 (WEST DOUGLAS AVE.)  
REGISTERED PLAN 74  
CITY OF OTTAWA

PROJECT No.  
122186-00

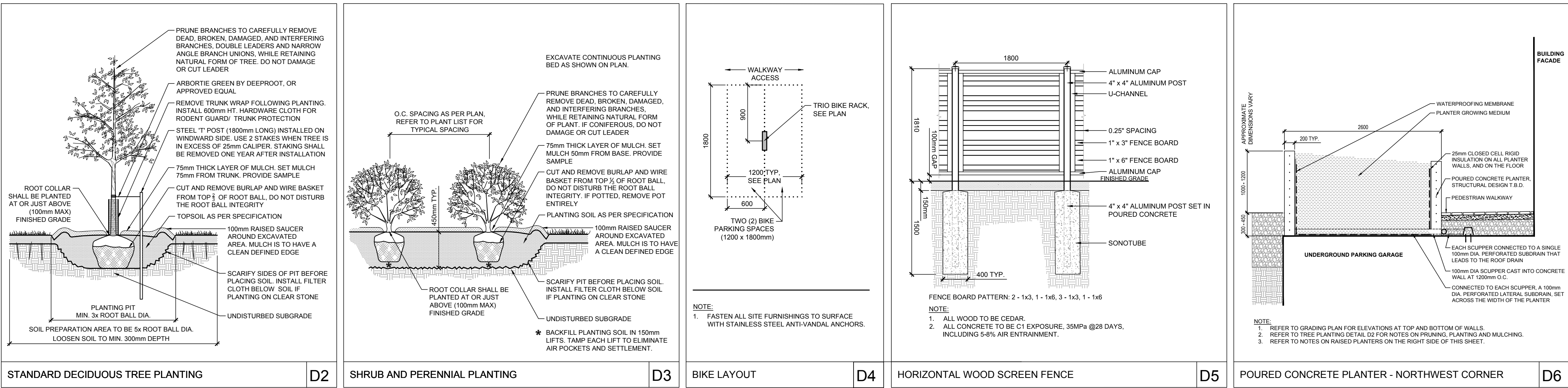
REV  
REV # 6

DRAWING No.  
122186-TCR2

PLANTING

#19043





OWNER  
2317916 ONT INC.  
2081 MERIVALE ROAD  
OTTAWA, ON, K2G 1G9

ARCHITECT  
PROJECT 1 STUDIO  
280 ST. PATRICK STREET, STE. 300  
OTTAWA, ON, K1N 5K5

PLANNER  
NOVATECH  
240 MICHAEL COWPLAND DRIVE, STE. 200  
OTTAWA, ON, K2M 1P6

LANDSCAPE ARCHITECT  
NOVATECH  
240 MICHAEL COWPLAND DRIVE, STE. 200  
OTTAWA, ON, K2M 1P6

CIVIL ENGINEER  
STANTEC  
300 - 1331 CLYDE AVENUE  
OTTAWA, ON, K2C 3G4

SURVEYOR  
ANNIS O'SULLIVAN VOLLEBEKK LTD.  
14 CONCOURSE GATE, STE. 500  
OTTAWA, ON, K2E 7S6

KEY PLAN  
N.T.S.

GENERAL

1. Read and interpret this drawing/ drawing set in conjunction with all the contract details and specifications, including related civil, utility, structural, architectural, mechanical, electrical, environmental, geotechnical, and survey information.

2. The Contractor is to determine the exact location, size, material, and elevation of all existing utilities prior to commencing construction. Protect and assume responsibility for all existing utilities regardless of being shown on the drawings.

3. It is essential to use the plans and details in conjunction with the specifications and notes.

4. Do not scale drawings. Work to dimensions only.

5. Protect all existing and retained vegetation for the duration of construction according to the contract details and specifications.

6. Reinstall all areas and items damaged or disturbed, beyond the Limit of Work, because of construction activities, including but not limited to construction staging areas, haul roads, stockpile areas, etc. to the satisfaction of the Consultant. Unless otherwise noted, Contractor is to reinstate all areas to pre-construction condition or better to the satisfaction of the Contract Administrator.

PLANTING

1. Plant material to be No. 1 Grade and is to comply with Canadian Standards for Nursery Stock (latest edition) published by the Canadian Nursery Landscape Association.

2. Use structurally sound plant material with strong fibrous root system free of disease, defects, and injuries. Use trees with straight trunks, well and characteristically branched for species. Obtain approval from consultant of plant material at source prior to digging. All trees and shrubs to be container grown, potted, W/B or B/B, as indicated on Plant List. Bare root plants are only acceptable for certain species and as approved by the Landscape Architect.

3. Plant material substitutions are not permitted without the written approval from the Consultant, with 48 hours notice, prior to shipping plant material.

4. Plant locations are schematic / approximate only. Contractor is to stake out locations on site for approval by the Landscape Architect prior to installation.

5. The illustrated number of plants shown in the Planting Plan supersedes the estimated number in the Plant List. Contractor to report any discrepancies to the Landscape Architect prior to installation. Contractor will assume full responsibility if the Landscape Architect is not notified.

6. Ensure trees are thoroughly watered following planting. Monitor material and ensure adequate moisture until acceptance.

7. In heavy clay or poorly drained soils, set root ball with root collar 75-100mm higher than finished grade.

8. Approved topsoil depths are as follows:

a. Plant Beds - 450mm continuous depth. Applies to shrubs, perennials, vines, and groundcovers.

9. Apply the following mineral fertilizer unless soil tests show other requirements:

a. Plant Beds - (8-32-16), i.e. 8% Nitrogen, 32% Phosphorus, 16% Potash per manufacturer specifications.

RAISED PLANTERS

1. Set trees in raised planters on a bed of heavily compacted growing medium, at the bottom, to eliminate settlement.

2. Backfill around the root ball with growing medium in 150mm lifts. Tamp and water each lift to eliminate air pockets or settlement.

3. Growing medium to be:

a. 80% commercial screened topsoil

b. 10% peat moss or compost, and

c. 10% perlite.

4. Cover top of the planter surface with 75mm of shredded bark mulch.

PRODUCT INFORMATION

Install products as per manufacturer specifications. Shop drawings required.

PLANTER WALLS

• Tandem Wall Next by Techo-Bloc  
Location: Springfield Rd. & Douglas Ave.

PAVERS

Edge of pavers to receive edge restraint.

• Blu 60 by Techo-Bloc

FENCE

• Horizontal Wood Privacy Fence  
Panel Height: 2m  
Post Cap: TBD  
Colour: TBD

SITE FURNITURE

Fasten all site furnishing to surface with stainless steel anti-vandal anchors.

• Trio Bike Rack by Forms + Surfaces  
Powdercoat Colour: Dark Grey Metallic Texture

GEOTEXTILE

• Terrafix 270R or Approved Equivalent  
Location: Beechwood Ave.

RIVERSTONE MULCH STABILIZER

• Gator Rock Bond and Binder Kit by Alliance  
Location: Beechwood Ave.

CANOPY COVER CALCULATIONS

1. REFER TO SHEET 122186-TCR2.

EASEMENTS

1. REFER TO SHEET 122186-TCR1.

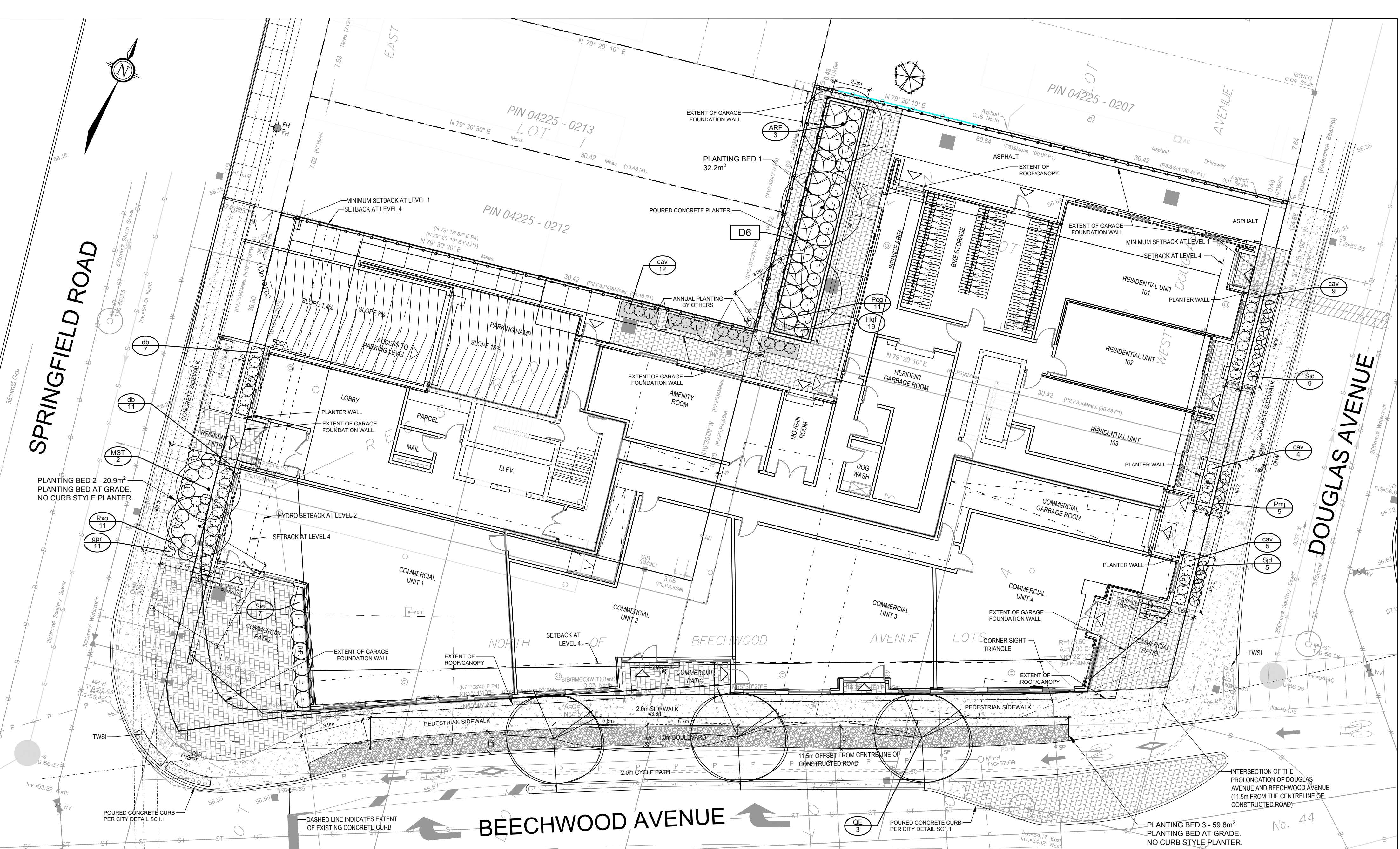
SOIL CALCULATIONS:

Planting Bed No.	Available Soil Area (sq m)	Available Soil Depth (m)	Available Soil Volume (cu m)	No. of Proposed Trees				Total No. of trees	Min. required Soil Volume total (cu m)
				Small 20m <sup>2</sup> or 12m <sup>2</sup>	Medium 30m <sup>2</sup> or 15m <sup>2</sup>	Large 40m <sup>2</sup> or 20m <sup>2</sup>	Evergreen 25m <sup>2</sup> or 15m <sup>2</sup>		
Planting Bed 1	32.20	1.50	48.30	0	3	0	0	3	45m <sup>3</sup>
Planting Bed 2	20.90	1.2m	25.08	2	0	0	0	2	24m <sup>3</sup>
Planting Bed 3	59.80	1.2m	71.76	0	0	3	0	3	54m <sup>3</sup>

Note 1: For proposed Planting Bed 1 - poured concrete raised planter to provide adequate soil volume to support 3 medium trees

PLANT LIST

KEY	QTY	BOTANICAL NAME	COMMON NAME	OWNERSHIP	COMMENT	SIZE	COND	SPACING
<b>Deciduous Trees</b>								
ARE	3	<i>Acer rubrum</i> 'Autumn Flame'	Autumn Flame Red Maple	Private	Native Cultivar	50mm Cal	W/B	As Shown
MST	2	<i>Malus</i> 'Sugar Tyme'	Sugar Tyme Crabapple	City	Non-Native	50mm Cal	W/B	As Shown
GE	3	<i>Quercus ellipsoidalis</i>	Northern Pin Oak	City	Native	50mm Cal	W/B	As Shown
<b>Coniferous Shrubs</b>								
Pm	5	<i>Pinus mugo</i> 'Jakobsen'	Jakobsen Mugo Pine	City		40cm Spr	BB	As Shown
<b>Deciduous Shrubs</b>								
Hof	19	<i>Hydrangea pan.</i> 'Tiny Quick Fire' (SMN/PSB)	Tiny Quick Fire Hydrangea	Private		40cm Ht	PT	As Shown
Pcg	11	<i>Physocarpus opulifolius</i> 'Centre Glow'	Centre Glow Ninebark	Private		60cm Ht	PT	As Shown
Rxo	11	<i>Rosa x 'Italian Ice'</i>	Oso Easy Italian Ice Rose	City		50cm Ht	PT	As Shown
Sjd	14	<i>Spiraea japonica</i> 'Double Play Candy Corn'	Double Play Candy Corn Spiraea	City		50cm Ht	PT	As Shown
Sic	7	<i>Stephanandra incisa</i> 'Crispa'	Cutleaf Stephanandra	Private		40cm Ht	PT	As Shown
<b>Perennials</b>								
gpr	11	<i>Geranium</i> 'Rozanne'	Rozanne Cranesbill	City		1g	PT	As Shown
<b>Ornamental Grasses</b>								
cav	30	<i>Calamagrostis acutiflora</i> 'Avalanche'	Avalanche Feather Reed Grass	Private		1g	PT	As Shown
db	18	<i>Deschampsia cespitosa</i> 'Bronzeschleier'	Bronze Veil Tufted Hair Grass	Private		1g	PT	As Shown



NOTE: THE POSITION OF ALL POLE LINES, CONDUITS, WATERMANS, SEWERS AND OTHER UNDERGROUND AND OVERGROUND UTILITIES AND STRUCTURES IS NOT NECESSARILY SHOWN ON THE CONTRACT DRAWINGS, AND WHERE SHOWN, THE ACCURACY OF THE POSITION OF SUCH UTILITIES AND STRUCTURES IS NOT GUARANTEED. BEFORE STARTING WORK, DETERMINE THE EXACT LOCATION OF ALL SUCH UTILITIES AND STRUCTURES AND ASSUME ALL LIABILITY FOR DAMAGE TO THEM.

Owner:  
2317916 ONT INC.  
2081 MERIVALE ROAD  
OTTAWA, ON K2G 1G9

NOT FOR CONSTRUCTION

No.	REVISION	DATE	BY
6.	RE-ISSUED FOR SPC	MAY 5/25	RGJ
5.	RE-ISSUED FOR SPC	OCT 11/24	RGJ
4.	RE-ISSUED FOR SPC	SEPT 6/24	RGJ
3.	RE-ISSUED FOR SPC	AUG 20/24	RGJ
2.	RE-ISSUED FOR SPC	JUN 26/24	RGJ
1.	ISSUED FOR SPC	JUN 13/23	RGJ

SCALE  
1:150  
0 2 4 6

DESIGN  
MEL  
CHECKED  
RGJ  
DRAWN  
MEL  
CHECKED  
RGJ  
APPROVED  
RGJ

FOR REVIEW ONLY

ASSOCIATION OF LANDSCAPE ARCHITECTS  
ONTARIO  
MAY 5/25  
MEMBER

NOVATECH  
Engineers, Planners & Landscape Architects  
Suite 200, 240 Michael Cowpland Drive  
Ottawa, Ontario, Canada K2M 1P6  
Telephone (613) 254-9643  
Facsimile (613) 254-5867  
Website www.novatech-eng.com

LOCATION  
CITY OF OTTAWA  
47 BEECHWOOD AVENUE

PART OF LOTS 1, 2, 3, & 4 (NORTH BEECHWOOD AVE.)  
LOT 1 AND PART OF LOT 2 (WEST DOUGLAS AVE.)  
REGISTERED PLAN T4  
CITY OF OTTAWA

DRAWING NAME  
LANDSCAPE PLAN

PROJECT No.  
122186-00

REV  
REV # 6

DRAWING No.  
122186-LP1

PLANS 2/16

#19043