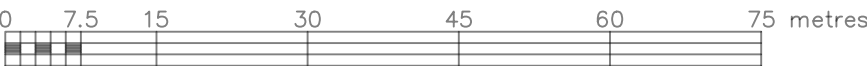


Plan of Survey of

PART OF LOT 32
CONCESSION 11
GEOGRAPHIC TOWNSHIP OF GOULBOURN
CITY OF OTTAWA

FARLEY, SMITH & DENIS SURVEYING LTD. 2024

Scale 1: 750



Metric Note

Distances and/or coordinates on this plan are in metres and can be converted to feet by dividing by 0.3048.

Distance Note

Distances shown on this plan are ground distances and can be converted to grid distances by multiplying by the combined scale factor of 0.99992.

Bearing Note

Bearings hereon are grid bearings derived from the Can-Net Real Time Network and are referred to the Central Meridian of MTM Zone 9 (76°30' West Longitude) Nad-83 (Original).

For bearing comparisons, a rotation of 0°28'30" counter-clockwise was applied to bearings on P1.

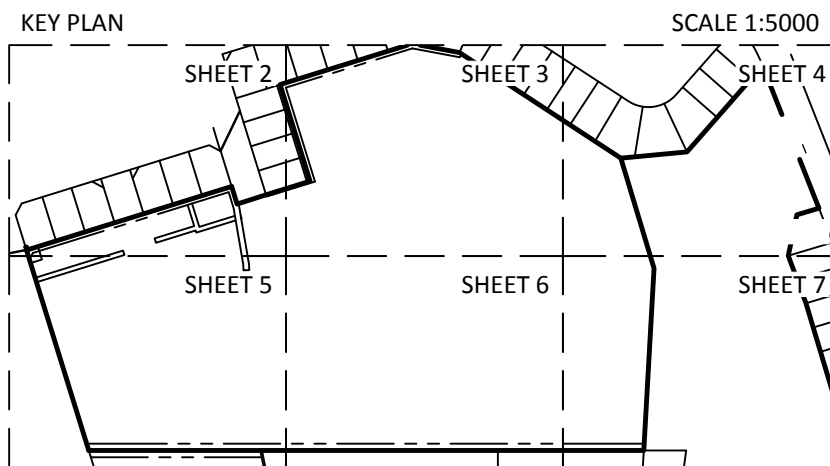
For bearing comparisons, a rotation of 0°30'30" counter-clockwise was applied to bearings on P9.

For bearing comparisons, a rotation of 0°27'30" counter-clockwise was applied to bearings on P13.

Notes & Legend

□	Denotes	Survey Monument Planted
■	SIB	Survey Monument Found
—	SSIB	Standard Iron Bar
—	SSIB*	Short Standard Iron Bar
—	IB	Short Standard Iron Bar(0.3m Long)
—	IBB	Iron Bar
—	CC	Round Iron Bar
—	CP	Cut Cross
—	Wit	Concrete Pin
—	Meas	Witness
—	(P1)	Measured
—	(P2)	Plan SR-1601
—	(P3)	Plan 4R-31534
—	(P4)	Plan by (857) dated October 6, 1938 (Ref. No. 4-M-223)
—	(P5)	Ottawa Carleton Condominium Plan 235
—	(P6)	Plan by (AOG) dated February 27, 1969
—	(P7)	Plan by (857) dated July 23, 2019 (Ref. 54-839 Goulbourn)
—	(P8)	Plan 4R-11537
—	(P9)	Plan 4R-3519
—	(P10)	Registered Plan 839
—	(P11)	Plan by (857) dated October 25, 1996 (Ref. No. 48-839 (Gib))
—	(P12)	Plan by (1175) dated February 27, 2012 (GLB-398)
—	(P13)	Notes by (857) Notes on Registered Plan 839 by C.D. Rogers
—	(P14)	Registered Plan 809
—	(P15)	Registered Plan M-223
—	(P16)	Plan by (857) dated October 27, 1987 (Ref. No. 21-839)
—	CLF	Plan by (857) dated August 19, 1987 (Ref. No. 20-839)
—	BF	Chain Link Fence
—	RF	Board Fence
—	MF	Rail Fence
—	PVC	Metal Fence
—	TRW	Plastic Vinyl Fence
—	C/L	Timber Retaining Wall
—		Centreline
—		Property Line

Site Area=8.08 Hectares



Revision Note

Revised to show topographic information along Old Colony Road as well as the new location of the portable classrooms. Fieldwork completed on the 24th day of October, 2024 .

November 12, 2024
Date

Daniel Robinson
Ontario Land Surveyor

Surveyor's Certificate

I certify that:
1. This survey and plan are correct and in accordance with the Surveys Act, the Surveyors Act and the Regulations made under them.
2. The survey was completed on the 29th day of April, 2024.

June 28, 2024
Date

Daniel Robinson
Ontario Land Surveyor

This plan of survey relates to AOLS Plan Submission Form Number V-80468

FARLEY, SMITH & DENIS SURVEYING LTD.

ONTARIO LAND SURVEYORS
CANADA LAND SURVEYORS

Unit 275, 30 COLONNADE ROAD, OTTAWA, ONTARIO K2E 7J6
TEL. (613) 727-8226 E-mail: fdsurveys@bellnet.ca

WARNING NO PERSON MAY COPY, REPRODUCE, DISTRIBUTE OR ALTER THIS PLAN IN WHOLE OR IN PART WITHOUT THE WRITTEN PERMISSION OF FARLEY, SMITH & DENIS SURVEYING LTD. © FARLEY, SMITH & DENIS SURVEYING LTD., 2024

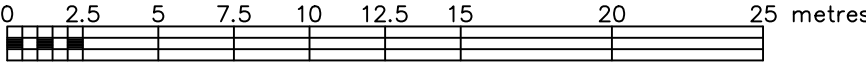
FILE No.: 110-24

TOPOGRAPHIC SKETCH OF

#150 ABBEYHILL DRIVE
CITY OF OTTAWA

FARLEY, SMITH & DENIS SURVEYING LTD. 2024

Scale 1: 250



Metric Note

Distances and/or coordinates on this plan are in metres and can be converted to feet by dividing by 0.3048.

Distance Note

Distances shown on this plan are ground distances and can be converted to grid distances by multiplying by the combined scale factor of 0.99992.

Boundary Note

This plan is to be read in conjunction with a Plan of Survey by Farley, Smith and Denis Surveying Ltd dated June 28, 2024 (File No. 110-24).

Elevation Notes

- Elevations shown are geodetic and are referred to Geodetic Datum CGVD-1928 :1978. (Monument No. 19770882)
- It is the responsibility of the user of this information to verify that the job benchmark has not been altered or disturbed and that its relative elevation and description agrees with the information shown on this drawing.

Utility Notes

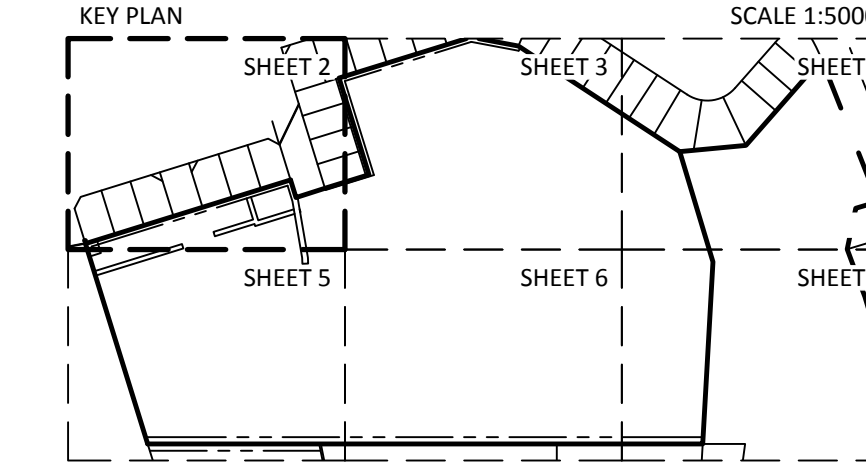
- This drawing cannot be accepted as acknowledging all of the utilities and it will be the responsibility of the user to contact the respective utility authorities for confirmation.
- Only visible surface utilities were located.
- Underground utility data derived from City of Ottawa utility sheet reference: N-K-25, N-I-30, O-K-01, O-L-06, 12908p&p1, 12908p&p2, 12956p&p3 & 13189p&p10.
- Sanitary and storm sewer grades and inverts were derived from: Field measurement.
- A field location of underground plant by the pertinent utility authority is mandatory before any work involving breaking ground, probing, excavating etc.
- Not all overhead wires/transformers adjacent to the property have been located, the nearest overhead wire locations are shown on the plan.

Geographic Location

PART OF LOT 32
CONCESSION 11
GEOGRAPHIC TOWNSHIP OF GOULBOURN
CITY OF OTTAWA

Notes & Legend

Denotes	Survey Monument Planted
■	Survey Monument Found
SIB	Standard Iron Bar
SSIB	Short Standard Iron Bar
SSIB*	Short Standard Iron Bar (0.3m Long)
IB	Iron Bar
IBØ	Round Iron Bar
CC	Cut Cross
CP	Concrete Pin
(Wit)	Witness
Meas	Measured
(P1)	Plan 5R-1601
(P2)	Plan 4R-31534
(P3)	Plan by (857) dated October 6, 1938 (Ref. No. 4-M-223)
(P4)	Ottawa Carleton Condominium Plan 235
(P5)	Plan by (AOG) dated February 27, 1969
(P6)	Plan by (857) dated July 23, 2019 (Ref. 54-839 Goulbourn)
(P7)	Plan 4R-11537
(P8)	Plan 4R-3519
(P9)	Registered Plan 839
(P10)	Plan by (857) dated October 25, 1996 (Ref. No. 48-839 (Gib))
(P11)	Plan by (1175) dated February 27, 2012 (GLB-398)
(P12)	Notes by (857) Notes on Registered Plan 839 by C.D. Rogers
(P13)	Registered Plan 809
(P14)	Registered Plan M-223
(P15)	Plan by (857) dated October 27, 1987 (Ref. No. 21-839)
(P16)	Plan by (857) dated August 19, 1987 (Ref. No. 20-839)
○ MH-ST	Maintenance Hole (Storm)
○ MH-S	Maintenance Hole (Sanitary)
○ MH-B	Maintenance Hole (Bell)
○ MH-T	Maintenance Hole (Traffic)
○ MH-H	Maintenance Hole (Hydro)
○ MH-R	Maintenance Hole (Rogers)
○ VC	Valve Chamber (Watermain)
— ST	Underground Storm Sewer
— S	Underground Sanitary Sewer
— W	Underground Water
— P	Underground Power
— G	Underground Gas
— B	Underground Bell
— U	Underground Cable
— TW	Overhead Wires
○ LS	Light Standard
□ CB	Catch Basin
◇ FH	Fire Hydrant
□ GW	Water Valve
□ GM	Gas Meter
□ TB-B	Bell Terminal Box
□ B	Cable Terminal Box
△ S	Bollard
—	Gate
—	Flag Pole
—	Diameter
—	Concrete Retaining Wall
—	Plastic Vinyl Fence
—	Stone Retaining Wall
—	Timber Retaining Wall
—	Underneath of Eave
—	Top of Foundation
—	Invert
—	Invert Derived from Utility Report
—	Location of Elevations
—	Top of Concrete Curb/Retaining Wall Elevation
—	Property Line
—	Deciduous Tree
—	Coniferous Tree



Revision Note

Revised to show topographic information along Old Colony Road as well as the new location of the portable classrooms. Fieldwork completed on the 24th day of October, 2024.

WARNING NO PERSON MAY COPY, REPRODUCE, DISTRIBUTE OR ALTER THIS PLAN IN WHOLE OR IN PART WITHOUT THE WRITTEN PERMISSION OF FARLEY, SMITH & DENIS SURVEYING LTD.
© FARLEY, SMITH & DENIS SURVEYING LTD., 2024.

FARLEY, SMITH & DENIS SURVEYING LTD.

ONTARIO LAND SURVEYORS
CANADA LAND SURVEYORS

Unit 275, 30 COLONNADE ROAD, OTTAWA, ONTARIO K2E 7J6
TEL. (613) 727-8226 E-mail: fdsurveys@bellnet.ca

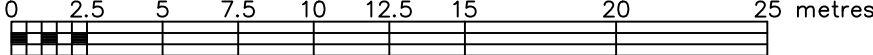
FILE No.: 110-24

TOPOGRAPHIC SKETCH OF

#150 ABBEYHILL DRIVE
CITY OF OTTAWA

FARLEY, SMITH & DENIS SURVEYING LTD. 2024

Scale 1: 250



Metric Note

Distances and/or coordinates on this plan are in metres and can be converted to feet by dividing by 0.3048.

Distance Note

Distances shown on this plan are ground distances and can be converted to grid distances by multiplying by the combined scale factor of 0.99992.

Boundary Note

This plan is to be read in conjunction with a Plan of Survey by Farley, Smith and Denis Surveying Ltd dated June 28, 2024 (File No. 110-24).

Elevation Notes

- Elevations shown are geodetic and are referred to Geodetic Datum CGVD-1928 :1978. (Monument No. 19770882)
- It is the responsibility of the user of this information to verify that the job benchmark has not been altered or disturbed and that its relative elevation and description agrees with the information shown on this drawing.

Utility Notes

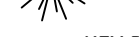
- This drawing cannot be accepted as acknowledging all of the utilities and it will be the responsibility of the user to contact the respective utility authorities for confirmation.
- Only visible surface utilities were located.
- Underground utility data derived from City of Ottawa utility sheet reference: N-K-25, N-L-30, O-K-01, O-L-06, 12908p&p1, 12908p&p2, 12956p&p3 & 13189p&p10.
- Sanitary and storm sewer grades and inverts were derived from: Field measurement.
- A field location of underground plant by the pertinent utility authority is mandatory before any work involving breaking ground, probing, excavating etc.
- Not all overhead wires/transformers adjacent to the property have been located, the nearest overhead wire locations are shown on the plan.

Geographic Location

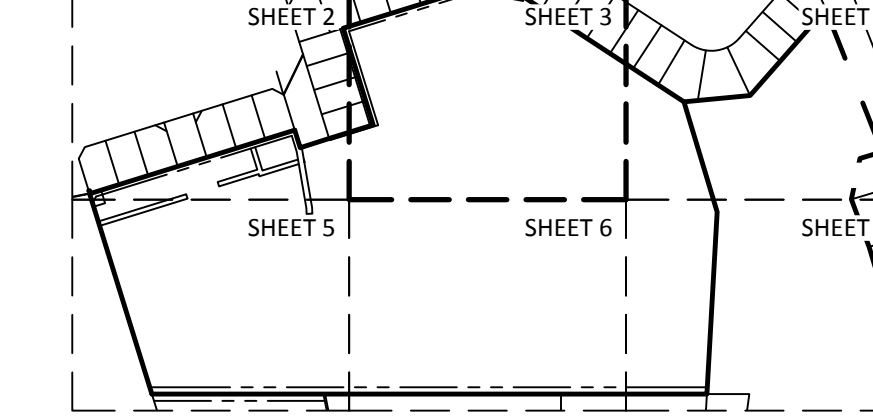
PART OF LOT 32
CONCESSION 11
GEOGRAPHIC TOWNSHIP OF GOULBOURN
CITY OF OTTAWA

Notes & Legend

Denotes	Survey Monument Planted
SIB	Standard Iron Bar
SSIB	Short Standard Iron Bar
SSIB*	Short Standard Iron Bar(0.3m Long)
IB	Iron Bar
IB*	Round Iron Bar
CC	Cut Cross
CP	Concrete Pin
WIT	Witness
Meas	Measured
(P1)	Plan 5R-1601
(P2)	Plan 4R-31534
(P3)	Plan by (857) dated October 6, 1938 (Ref. No. 4-M-223)
(P4)	Ottawa Carleton Condominium Plan 235
(P5)	Plan by (AOG) dated February 27, 1969
(P6)	Plan by (857) dated July 23, 2019 (Ref. 54-839 Goulbourn)
(P7)	Plan 4R-11537
(P8)	Plan 4R-3519
(P9)	Registered Plan 839
(P10)	Plan by (857) dated October 25, 1996 (Ref. No. 48-839 (Glb))
(P11)	Plan by (1175) dated February 27, 2012 (GLB-398)
(P12)	Notes by (857) Notes on Registered Plan 839 by C.D. Rogers
(P13)	Registered Plan 809
(P14)	Registered Plan M-223
(P15)	Plan by (857) dated October 27, 1987 (Ref. No. 21-839)
(P16)	Plan by (857) dated August 19, 1987 (Ref. No. 20-839)
○ M-ST	Maintenance Hole (Storm)
○ M-H	Maintenance Hole (Sanitary)
○ M-B	Maintenance Hole (Bell)
○ M-T	Maintenance Hole (Traffic)
○ M-H	Maintenance Hole (Hydro)
○ M-R	Maintenance Hole (Rogers)
○ VC	Valve Chamber (Watermain)
— ST	Underground Storm Sewer
— S	Underground Sanitary Sewer
— W	Underground Water
— P	Underground Power
— G	Underground Gas
— B	Underground Bell
— TV	Underground Cable
— TH	Utility Pole
— OUP	Overhead Wires
— CLF	Chain Link Fence
— BF	Board Fence
— RF	Rail Fence
— MF	Metal Fence
— PVC	Plastic/Vinyl Fence
— CRW	Concrete Retaining Wall
— SRW	Stone Retaining Wall
— TRW	Timber Retaining Wall
— U/Eave	Underside of Eave
— T/Fdn	Top of Foundation
— Inv.	Invert
— Inv(City)	Invert Derived from Utility Report
— +65.00	Location of Elevations
— +65.00	Top of Concrete Curb/Retaining Wall Elevation
—	Property Line
—	Deciduous Tree
—	Coniferous Tree
○ LS	Light Standard
□ CB	Catch Basin
◇ FH	Fire Hydrant
◇ WV	Water Valve
□ GM	Gas Meter
□ TB-B	Bell Terminal Box
□ TB-C	Cable Terminal Box
○ B	Bollard
△ S	Sign
—	Gate
○ FP	Flag Pole
○ C	Diameter
○ CL	Centreline
○	Disabled Parking
— T/G	Top of Grate
— CS	Charging Station
— BK	Bike Rack



KEY PLAN



Revision Note

Revised to show topographic information along Old Colony Road as well as the new location of the portable classrooms. Fieldwork completed on the 24th day of October, 2024.

WARNING NO PERSON MAY COPY, REPRODUCE, DISTRIBUTE OR ALTER THIS PLAN IN WHOLE OR IN PART WITHOUT THE WRITTEN PERMISSION OF FARLEY, SMITH & DENIS SURVEYING LTD., 2024.

FARLEY, SMITH & DENIS SURVEYING LTD.

ONTARIO LAND SURVEYORS
CANADA LAND SURVEYORS

Unit 275, 30 COLONNADE ROAD, OTTAWA, ONTARIO K2E 7J6
TEL: (613) 727-8226 E-mail: fdsurveys@bellnet.ca

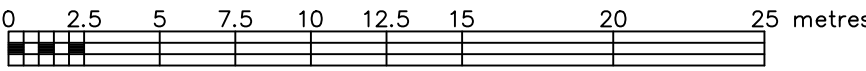
FILE NO.: 110-24

TOPOGRAPHIC SKETCH OF

#150 ABBEYHILL DRIVE
CITY OF OTTAWA

FARLEY, SMITH & DENIS SURVEYING LTD. 2024

Scale 1: 250



Metric Note

Distances and/or coordinates on this plan are in metres and can be converted to feet by dividing by 0.3048.

Distance Note

Distances shown on this plan are ground distances and can be converted to grid distances by multiplying by the combined scale factor of 0.99992.

Boundary Note

This plan is to be read in conjunction with a Plan of Survey by Farley, Smith and Denis Surveying Ltd dated June 28, 2024 (File No. 110-24).

Elevation Notes

- Elevations shown are geodetic and are referred to Geodetic Datum CGVD-1928 :1978. (Monument No. 19770882)
- It is the responsibility of the user of this information to verify that the job benchmark has not been altered or disturbed and that it's relative elevation and description agrees with the information shown on this drawing.

Utility Notes

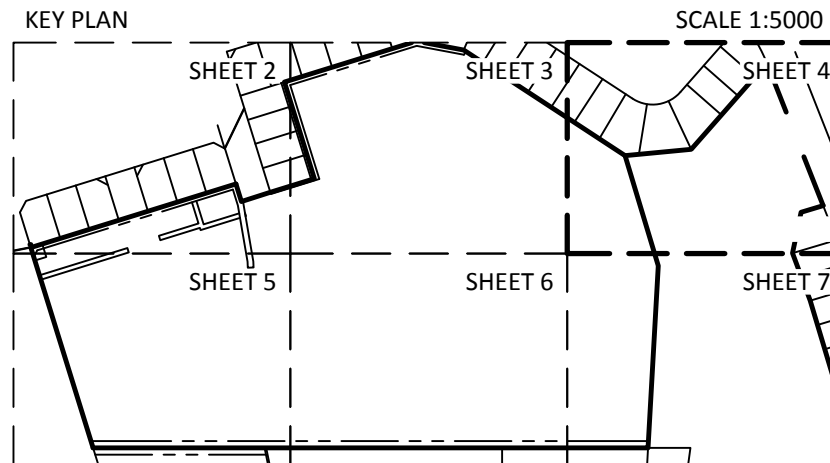
- This drawing cannot be accepted as acknowledging all of the utilities and it will be the responsibility of the user to contact the respective utility authorities for confirmation.
- Only visible surface utilities were located.
- Underground utility data derived from City of Ottawa utility sheet reference: N-K-25, N-L-30, O-K-01, O-L-06, 12908p&p1, 12908p&p2, 12956p&p3 & 13189p&p10.
- Sanitary and storm sewer grades and inverts were derived from: Field measurement.
- A field location of underground plant by the pertinent utility authority is mandatory before any work involving breaking ground, probing, excavating etc.
- Not all overhead wires/transformers adjacent to the property have been located, the nearest overhead wire locations are shown on the plan.

Geographic Location

PART OF LOT 32
CONCESSION 11
GEOGRAPHIC TOWNSHIP OF GOULBOURN
CITY OF OTTAWA

Notes & Legend

Denotes	Survey Monument Planted
■	Survey Monument Found
SSIB	Standard Iron Bar
SSIB*	Short Standard Iron Bar
IB	Short Standard Iron Bar(0.3m Long)
IBØ	Iron Bar
CC	Round Iron Bar
CP	Cut Cross
(Wit)	Concrete Pin
Meas	Witness
(P1)	Measured
(P2)	Plan 5R-1601
(P3)	Plan 4R-31534
(P4)	Plan by (857) dated October 6, 1938 (Ref. No. 4-M-223)
(P5)	Ottawa Carleton Condominium Plan 235
(P6)	Plan by (AQG) dated February 27, 1969
(P7)	Plan by (857) dated July 23, 2019 (Ref. 54-839 Goulbourn)
(P8)	Plan 4R-11537
(P9)	Plan 4R-3519
(P10)	Registered Plan 839
(P11)	Plan by (857) dated October 25, 1996 (Ref. No. 48-839 (Glb))
(P12)	Plan by (1175) dated February 27, 2012 (GLB-398)
(P13)	Notes by (857) Notes on Registered Plan 839 by C.D. Rogers
(P14)	Registered Plan 809
(P15)	Registered Plan M-223
(P16)	Plan by (857) dated October 27, 1987 (Ref. No. 21-839)
○ MH-ST	Plan by (857) dated August 19, 1987 (Ref. No. 20-839)
○ MH-S	Maintenance Hole (Storm)
○ MH-B	Maintenance Hole (Sanitary)
○ MH-T	Maintenance Hole (Bell)
○ MH-H	Maintenance Hole (Traffic)
○ MH-R	Maintenance Hole (Hydro)
○ MH-R	Maintenance Hole (Rogers)
○ VC	Valve Chamber (Watermain)
○ ST	Underground Storm Sewer
○ S	Underground Sanitary Sewer
○ W	Underground Water
○ P	Underground Power
○ G	Underground Gas
○ B	Underground Bell
○ TW	Underground Cable
○ LW	Overhead Wires
○ UP	Utility Pole
○ AN	Anchor
○ CLF	Chain Link Fence
○ BF	Board Fence
○ RF	Rail Fence
○ MF	Metal Fence
○ PVC	Plastic/Vinyl Fence
○ CRW	Concrete Retaining Wall
○ SRW	Stone Retaining Wall
○ TRW	Timber Retaining Wall
○ U/Eave	Underside of Eave
○ Tpfnd	Top of Foundation
○ Inv	Invert
○ Inv(City)	Invert Derived from Utility Report
○ +65.00	Location of Elevations
○ +65.00	Top of Concrete Curb/Retaining Wall Elevation
○	Property Line
○	Deciduous Tree
○	Coniferous Tree
○	The Symbol shown denotes location and trunk diameter only. Size of its root system/overhead canopy may be smaller/larger than the symbol size depicted on this plan.



Revision Note

Revised to show topographic information along Old Colony Road as well as the new location of the portable classrooms. Fieldwork completed on the 24th day of October, 2024.

WARNING NO PERSON MAY COPY, REPRODUCE, DISTRIBUTE OR ALTER THIS PLAN IN WHOLE OR IN PART WITHOUT THE WRITTEN PERMISSION OF FARLEY, SMITH & DENIS SURVEYING LTD.
© FARLEY, SMITH & DENIS SURVEYING LTD., 2024.

FARLEY, SMITH & DENIS SURVEYING LTD.

ONTARIO LAND SURVEYORS
CANADA LAND SURVEYORS

Unit 275, 30 COLONNADE ROAD, OTTAWA, ONTARIO K2E 7J6
TEL: (613) 727-8226 E-mail: fdsurveys@bellnet.ca

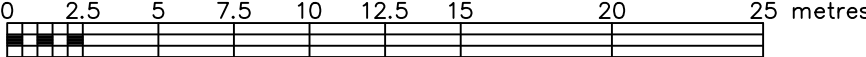
FILE No.: 110-24

TOPOGRAPHIC SKETCH OF

#150 ABBEYHILL DRIVE
CITY OF OTTAWA

FARLEY, SMITH & DENIS SURVEYING LTD. 2024

Scale 1: 250



Metric Note

Distances and/or coordinates on this plan are in metres and can be converted to feet by dividing by 0.3048.

Distance Note

Distances shown on this plan are ground distances and can be converted to grid distances by multiplying by the combined scale factor of 0.99992.

Boundary Note

This plan is to be read in conjunction with a Plan of Survey by Farley, Smith and Denis Surveying Ltd dated June 28, 2024 (File No. 110-24).

Elevation Notes

- Elevations shown are geodetic and are referred to Geodetic Datum CGVD-1928 :1978. (Monument No. 19770882)
- It is the responsibility of the user of this information to verify that the job benchmark has not been altered or disturbed and that it's relative elevation and description agrees with the information shown on this drawing.

Utility Notes

- This drawing cannot be accepted as acknowledging all of the utilities and it will be the responsibility of the user to contact the respective utility authorities for confirmation.
- Only visible surface utilities were located.
- Underground utility data derived from City of Ottawa utility sheet reference: N-K-25, N-L-30, O-K-01, O-L-06, 12908p&p1, 12908p&p2, 12956p&p3 & 13189p&p10.
- Sanitary and storm sewer grades and inverts were derived from: Field measurement.
- A field location of underground plant by the pertinent utility authority is mandatory before any work involving breaking ground, probing, excavating etc.
- Not all overhead wires/transformers adjacent to the property have been located, the nearest overhead wire locations are shown on the plan.

Geographic Location

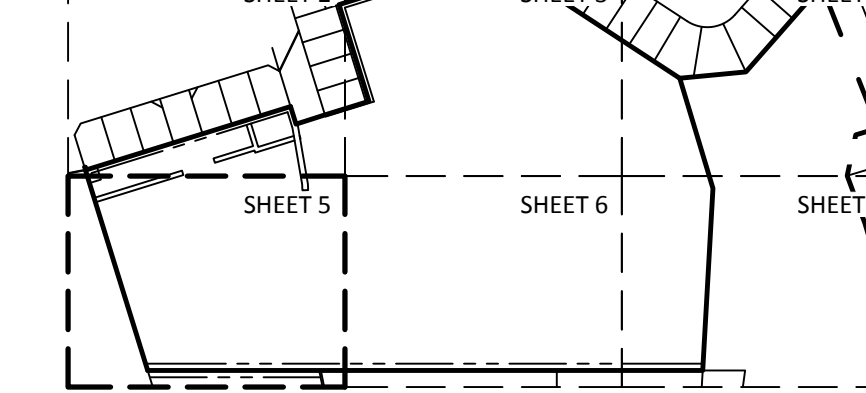
PART OF LOT 32
CONCESSION 11
GEOGRAPHIC TOWNSHIP OF GOULBOURN
CITY OF OTTAWA

Notes & Legend

Denotes	Survey Monument Found
□	Survey Monument Found
SIB	Standard Iron Bar
SSIB	Short Standard Iron Bar
SSIB*	Short Standard Iron Bar(0.3m Long)
IB	Iron Bar
IBØ	Round Iron Bar
CC	Cut Cross
CP	Concrete Pin
(Wt)	Witness
Meas	Measured
(P1)	Plan 5R-1601
(P2)	Plan 4R-31534
(P3)	Plan by (857) dated October 6, 1938 (Ref. No. 4-M-223)
(P4)	Ottawa Carleton Condominium Plan 235
(P5)	Plan by (AOG) dated February 27, 1969
(P6)	Plan by (857) dated July 23, 2019 (Ref. 54-839 Goulbourn)
(P7)	Plan 4R-11537
(P8)	Plan 4R-3519
(P9)	Registered Plan 839
(P10)	Plan by (857) dated October 25, 1996 (Ref. No. 48-839 (Glb))
(P11)	Plan by (1175) dated February 27, 2012 (GLB-398)
(P12)	Notes by (857) Notes on Registered Plan 839 by C.D. Rogers
(P13)	Registered Plan 809
(P14)	Registered Plan M-223
(P15)	Plan by (857) dated October 27, 1987 (Ref. No. 21-839)
(P16)	Plan by (857) dated August 19, 1987 (Ref. No. 20-839)
○ MH-ST	Maintenance Hole (Storm)
○ MH-S	Maintenance Hole (Sanitary)
○ MH-B	Maintenance Hole (Bell)
○ MH-T	Maintenance Hole (Traffic)
○ MH-H	Maintenance Hole (Hydro)
○ MH-R	Maintenance Hole (Rogers)
○ VC	Valve Chamber (Watermain)
— ST —	Underground Storm Sewer
— S —	Underground Sanitary Sewer
— W —	Underground Water
— P —	Underground Power
— G —	Underground Gas
— B —	Underground Bell
— TW —	Underground Cable
— OUP —	Overhead Wires
○ AN	Anchor
CLF	Chain Link Fence
BF	Board Fence
RF	Rail Fence
MF	Metal Fence
PVC	Plastic Vinyl Fence
CRW	Concrete Retaining Wall
SRW	Stone Retaining Wall
TRW	Timber Retaining Wall
U/Eave	Underside of Eave
TPFdn	Top of Foundation
Inv	Invert
Inv(City)	Invert Derived from Utility Report
+ 65.00	Location of Elevations
+ 65.00	Top of Concrete Curb/Retaining Wall Elevation
—	Property Line
•	Deciduous Tree
•	Coniferous Tree
○ LS	Light Standard
□ CB	Catch Basin
○ FH	Fire Hydrant
○ WV	Water Valve
○ BM	Gas Meter
○ TB-B	Bell Terminal Box
○ TB-C	Cable Terminal Box
○ B	Bollard
△ S	Sign
— G —	Gate
○ FP	Flag Pole
○	Diameter
○ C/L	Centreline
○	Disabled Parking
○ T/G	Top of Grate
○ CS	Charging Station
○ BK	Bike Rack



KEY PLAN



Revision Note

Revised to show topographic information along Old Colony Road as well as the new location of the portable classrooms. Fieldwork completed on the 24th day of October, 2024.

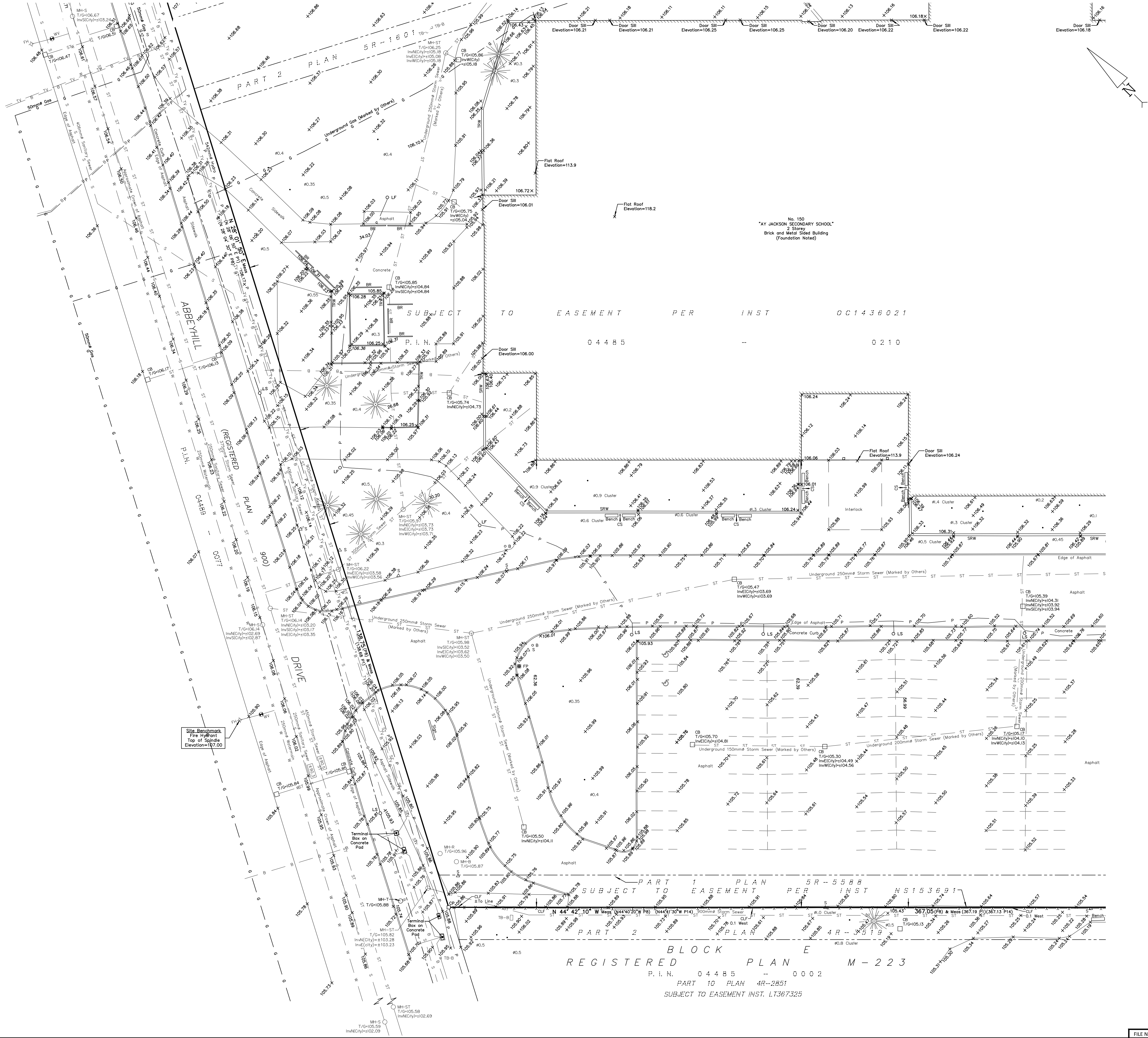
WARNING NO PERSON MAY COPY, REPRODUCE, DISTRIBUTE OR ALTER THIS PLAN IN WHOLE OR IN PART WITHOUT THE WRITTEN PERMISSION OF FARLEY, SMITH & DENIS SURVEYING LTD.
© FARLEY, SMITH & DENIS SURVEYING LTD., 2024.

FARLEY, SMITH & DENIS SURVEYING LTD.

ONTARIO LAND SURVEYORS
CANADA LAND SURVEYORS

Unit 275, 30 COLONNADE ROAD, OTTAWA, ONTARIO K2E 7J6
TEL: (613) 727-8226 E-mail: fdsurveys@bellnet.ca

FILE No.: 110-24

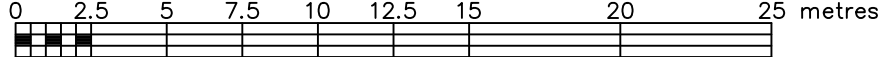


TOPOGRAPHIC SKETCH OF

#150 ABBEYHILL DRIVE
CITY OF OTTAWA

FARLEY, SMITH & DENIS SURVEYING LTD. 2024

Scale 1: 250



Metric Note

Distances and/or coordinates on this plan are in metres and can be converted to feet by dividing by 0.3048.

Distance Note

Distances shown on this plan are ground distances and can be converted to grid distances by multiplying by the combined scale factor of 0.99992.

Boundary Note

This plan is to be read in conjunction with a Plan of Survey by Farley, Smith and Denis Surveying Ltd dated June 28, 2024 (File No. 110-24).

Elevation Notes

- Elevations shown are geodetic and are referred to Geodetic Datum CGVD-1928 :1978. (Monument No. 19770882)
- It is the responsibility of the user of this information to verify that the job benchmark has not been altered or disturbed and that its relative elevation and description agrees with the information shown on this drawing.

Utility Notes

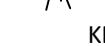
- This drawing cannot be accepted as acknowledging all of the utilities and it will be the responsibility of the user to contact the respective utility authorities for confirmation.
- Only visible surface utilities were located.
- Underground utility data derived from City of Ottawa utility sheet reference: N-K-25, N-L-30, O-K-01, O-L-06, 12908p&p1, 12908p&p2, 12956p&p3 & 13189p&p10
- Sanitary and storm sewer grades and inverts were derived from: Field measurement.
- A field location of underground plant by the pertinent utility authority is mandatory before any work involving breaking ground, probing, excavating etc.
- Not all overhead wires/transformers adjacent to the property have been located, the nearest overhead wire locations are shown on the plan.

Geographic Location

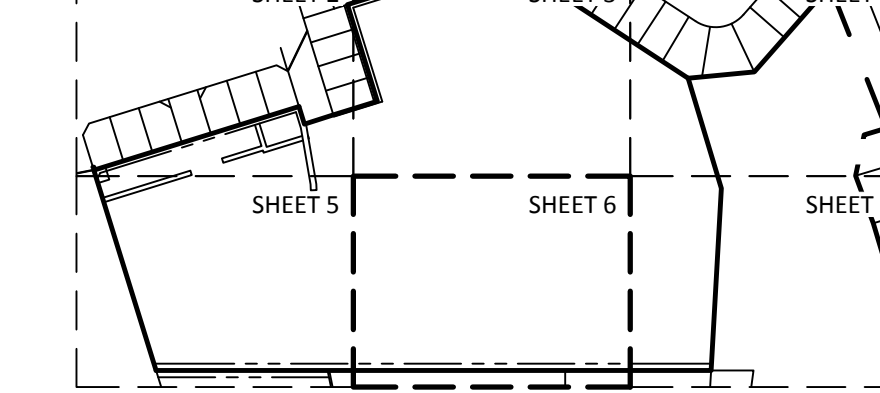
PART OF LOT 32
CONCESSION 11
GEOGRAPHIC TOWNSHIP OF GOULBOURN
CITY OF OTTAWA

Notes & Legend

Denotes	Survey Monument Planted	Survey Monument Found
■	Standard Iron Bar	Standard Iron Bar
SSIB	Short Standard Iron Bar	Short Standard Iron Bar
SSIB*	Short Standard Iron Bar(0.3m Long)	Short Standard Iron Bar
IB	Iron Bar	Iron Bar
IBØ	Round Iron Bar	Round Iron Bar
CC	Cut Cross	Cut Cross
CP	Concrete Pin	Concrete Pin
(Wit)	Witness	Witness
Meas	Measured	Measured
(P1)	Plan SR-1601	Plan SR-1601
(P2)	Plan 4R-31534	Plan 4R-31534
(P3)	Plan by (857) dated October 6, 1938 (Ref. No. 4-M-223)	Plan by (857) dated October 6, 1938 (Ref. No. 4-M-223)
(P4)	Ottawa Carleton Condominium Plan 235	Ottawa Carleton Condominium Plan 235
(P5)	Plan by (AOG) dated February 27, 1969	Plan by (AOG) dated February 27, 1969
(P6)	Plan by (857) dated July 23, 2019 (Ref. 54-839 Goulbourn)	Plan by (857) dated July 23, 2019 (Ref. 54-839 Goulbourn)
(P7)	Plan 4R-11537	Plan 4R-11537
(P8)	Plan 4R-3519	Plan 4R-3519
(P9)	Registered Plan 839	Registered Plan 839
(P10)	Plan by (857) dated October 25, 1996 (Ref. No. 48-839 (Gib))	Plan by (857) dated October 25, 1996 (Ref. No. 48-839 (Gib))
(P11)	Plan by (1175) dated February 27, 2012 (GLB-398)	Plan by (1175) dated February 27, 2012 (GLB-398)
(P12)	Notes by (857) Notes on Registered Plan 839 by C.D. Rogers	Notes by (857) Notes on Registered Plan 839 by C.D. Rogers
(P13)	Registered Plan 809	Registered Plan 809
(P14)	Registered Plan M-223	Registered Plan M-223
(P15)	Plan by (857) dated October 27, 1987 (Ref. No. 21-839)	Plan by (857) dated October 27, 1987 (Ref. No. 21-839)
(P16)	Plan by (857) dated August 19, 1987 (Ref. No. 20-839)	Plan by (857) dated August 19, 1987 (Ref. No. 20-839)
○ M+ST	Maintenance Hole (Storm)	Maintenance Hole (Storm)
○ M+H	Maintenance Hole (Sanitary)	Maintenance Hole (Sanitary)
○ M+T	Maintenance Hole (Bell)	Maintenance Hole (Bell)
○ M+H	Maintenance Hole (Traffic)	Maintenance Hole (Traffic)
○ M+H	Maintenance Hole (Hydro)	Maintenance Hole (Hydro)
○ M+H	Maintenance Hole (Rogers)	Maintenance Hole (Rogers)
○ M+H	Valve Chamber (Watermain)	Valve Chamber (Watermain)
○ VC	Underground Storm Sewer	Underground Storm Sewer
ST	Underground Sanitary Sewer	Underground Sanitary Sewer
W	Underground Water	Underground Water
P	Underground Power	Underground Power
G	Underground Gas	Underground Gas
B	Underground Bell	Underground Bell
TV	Underground Cable	Underground Cable
OW	Overhead Wires	Overhead Wires
UP	Utility Pole	Utility Pole
AN	Anchor	Anchor
CLF	Chain Link Fence	Chain Link Fence
BF	Board Fence	Board Fence
RF	Rail Fence	Rail Fence
MF	Metal Fence	Metal Fence
PVC	Plastic/Vinyl Fence	Plastic/Vinyl Fence
CRW	Concrete Retaining Wall	Concrete Retaining Wall
SRW	Stone Retaining Wall	Stone Retaining Wall
TRW	Timber Retaining Wall	Timber Retaining Wall
U/Eave	Underside of Eave	Underside of Eave
TpFdn	Top of Foundation	Top of Foundation
Inv.	Invert	Invert
Inv(City)	Invert Derived from Utility Report	Invert Derived from Utility Report
+65.00	Location of Elevations	Location of Elevations
+65.00	Top of Concrete Curb/Retaining Wall Elevation	Top of Concrete Curb/Retaining Wall Elevation
Property Line	Property Line	Property Line
Deciduous Tree	Deciduous Tree	Deciduous Tree
Coniferous Tree	Coniferous Tree	Coniferous Tree



KEY PLAN



Revision Note

Revised to show topographic information along Old Colony Road as well as the new location of the portable classrooms. Fieldwork completed on the 24th day of October, 2024.

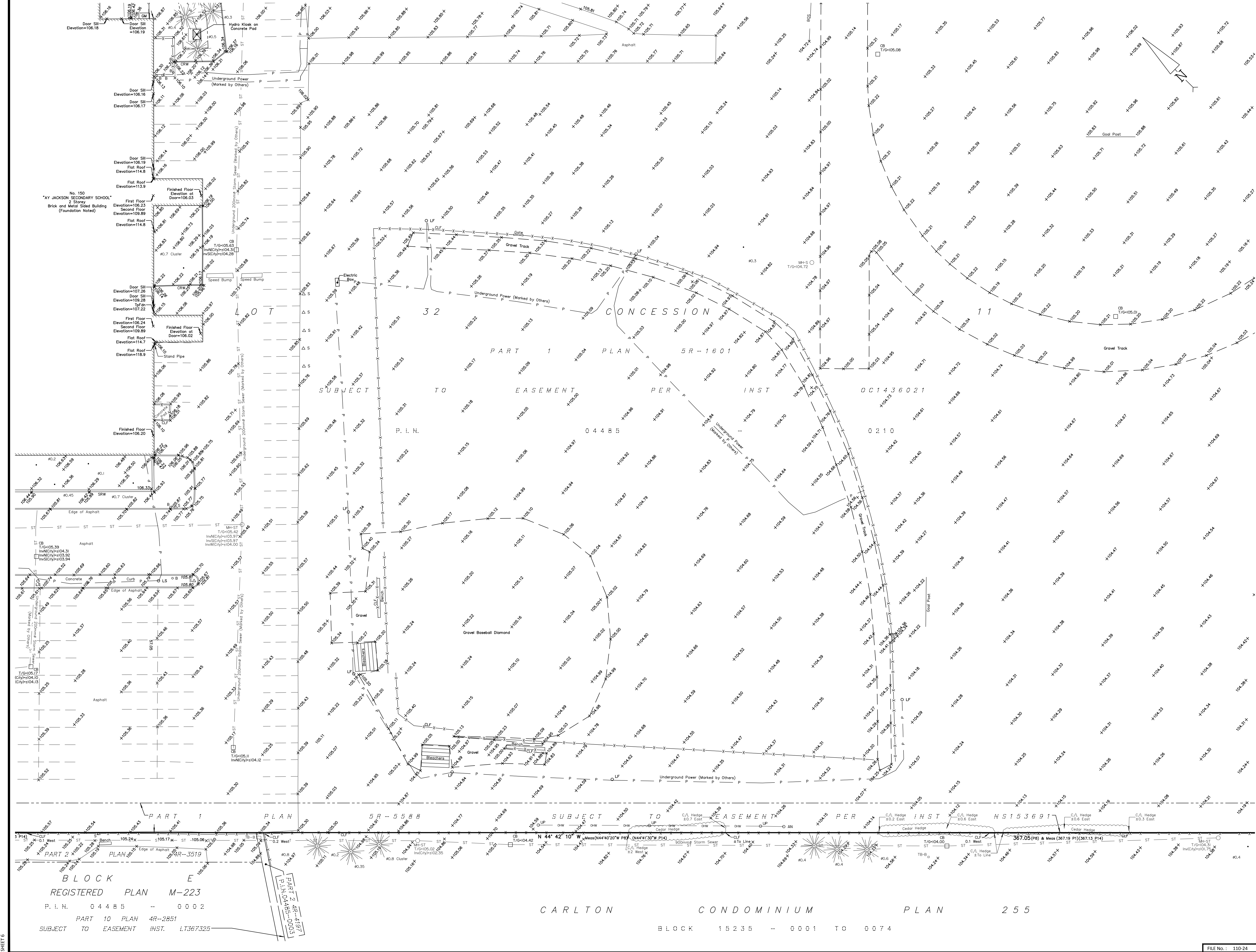
WARNING NO PERSON MAY COPY, REPRODUCE, DISTRIBUTE OR ALTER THIS PLAN IN WHOLE OR IN PART WITHOUT THE WRITTEN PERMISSION OF FARLEY, SMITH & DENIS SURVEYING LTD.

FARLEY, SMITH & DENIS SURVEYING LTD.

ONTARIO LAND SURVEYORS
CANADA LAND SURVEYORS

Unit 275, 30 COLONNADE ROAD, OTTAWA, ONTARIO K2E 7J6
TEL: (613) 727-8226 E-mail: fdsurveys@bellnet.ca

FILE No.: 110-24

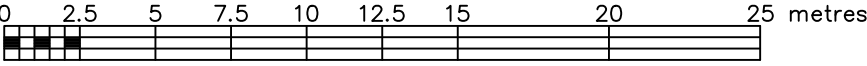


TOPOGRAPHIC SKETCH OF

#150 ABBEYHILL DRIVE
CITY OF OTTAWA

FARLEY, SMITH & DENIS SURVEYING LTD. 2024

Scale 1: 250



Metric Note

Distances and/or coordinates on this plan are in metres and can be converted to feet by dividing by 0.3048.

Distance Note

Distances shown on this plan are ground distances and can be converted to grid distances by multiplying by the combined scale factor of 0.99992.

Boundary Note

This plan is to be read in conjunction with a Plan of Survey by Farley, Smith and Denis Surveying Ltd dated June 28, 2024 (File No. 110-24).

Elevation Notes

- Elevations shown are geodetic and are referred to Geodetic Datum CGVD-1928 :1978 (Monument No. 15770882)
- It is the responsibility of the user of this information to verify that the job benchmark has not been altered or disturbed and that it's relative elevation and description agrees with the information shown on this drawing.

Utility Notes

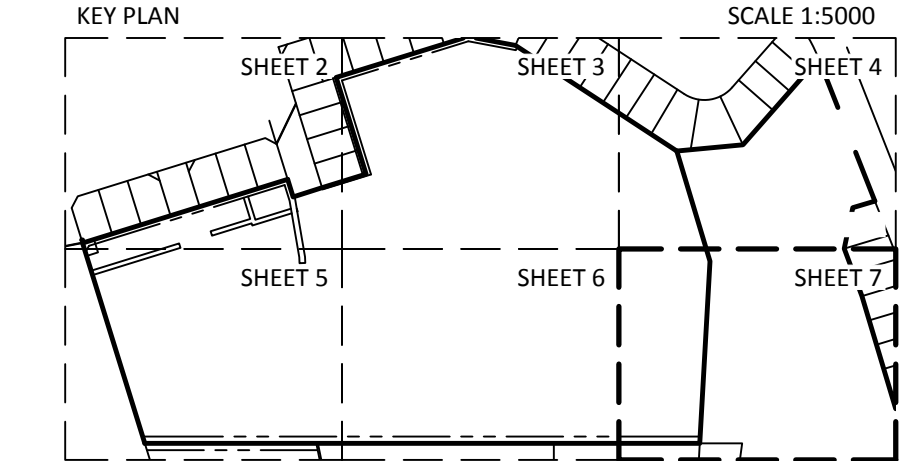
- This drawing cannot be accepted as acknowledging all of the utilities and it will be the responsibility of the user to contact the respective utility authorities for confirmation.
- Only visible surface utilities were located.
- Underground utility data derived from City of Ottawa utility sheet reference: N-K-25, N-L-30, O-K-01, O-L-06, 12908p&p1, 12908p&p2, 12956p&p3 & 13189p&p10.
- Sanitary and storm sewer grades and inverts were derived from: Field measurement.
- A field location of underground plant by the pertinent utility authority is mandatory before any work involving breaking ground, probing, excavating etc.
- Not all overhead wires/transformers adjacent to the property have been located, the nearest overhead wire locations are shown on the plan.

Geographic Location

PART OF LOT 32
CONCESSION 11
GEOGRAPHIC TOWNSHIP OF GOULBOURN
CITY OF OTTAWA

Notes & Legend

—□—	Denotes	Survey Monument Planted
—■—	Survey Monument Found	
SIB	Standard Iron Bar	
SSIB	Short Standard Iron Bar	
SSIB*	Short Standard Iron Bar(0.3m Long)	
IB	Iron Bar	
IBØ	Round Iron Bar	
CC	Cut Cross	
CP	Concrete Pin	
(Wit)	Witness	
Meas	Measured	
(P1)	Plan 5R-1601	
(P2)	Plan 4R-31534	
(P3)	Plan by (857) dated October 6, 1938 (Ref. No. 4-M-223)	
(P4)	Ottawa Carleton Condominium Plan 235	
(P5)	Plan by (AOG) dated February 27, 1969	
(P6)	Plan by (857) dated July 23, 2019 (Ref. 54-839 Goulbourn)	
(P7)	Plan 4R-11537	
(P8)	Plan 4R-3519	
(P9)	Registered Plan 839	
(P10)	Plan by (857) dated October 25, 1996 (Ref. No. 48-839 (Gib))	
(P11)	Plan by (1175) dated February 27, 2012 (GLB-398)	
(P12)	Notes by (857) Notes on Registered Plan 839 by C.D. Rogers	
(P13)	Registered Plan 809	
(P14)	Registered Plan M-223	
(P15)	Plan by (857) dated October 27, 1987 (Ref. No. 21-839)	
(P16)	Plan by (857) dated August 19, 1987 (Ref. No. 20-839)	
○ MH-ST	Maintenance Hole (Storm)	
○ MH-S	Maintenance Hole (Sanitary)	
○ MH-B	Maintenance Hole (Bell)	
○ MH-T	Maintenance Hole (Traffic)	
○ MH-H	Maintenance Hole (Hydro)	
○ MH-R	Maintenance Hole (Rogers)	
⊗ VC	Valve Chamber (Watermain)	
— ST —	Underground Storm Sewer	
— S —	Underground Sanitary Sewer	
— W —	Underground Water	
— P —	Underground Power	
— G —	Underground Gas	
— B —	Underground Bell	
— TV —	Underground Cable	
— OW —	Overhead Wires	
○ UP	Utility Pole	
○ AN	Anchor	
CLF	Chain Link Fence	
BF	Board Fence	
MF	Rail Fence	
PVC	Metal Fence	
CRW	Plastic / Vinyl Fence	
SRW	Concrete Retaining Wall	
TRW	Stone Retaining Wall	
U/Eave	Timber Retaining Wall	
TpFdn	Underside of Eave	
Inv	Top of Foundation	
Inv(City)	Invert	
+ 65.00	Invert Derived from Utility Report	
+ 65.00	Location of Elevations	
	Top of Concrete Curb/Retaining Wall Elevation	
	Property Line	
	Deciduous Tree	The Symbol shown denotes location and trunk diameter only. Size of its' root system/overhead canopy may be smaller/larger than the symbol size depicted on this plan.
	Coniferous Tree	



Revision Note

Revised to show topographic information along Old Colony Road as well as the new location of the portable classrooms. Fieldwork completed on the 24th day of October, 2024.

WARNING NO PERSON MAY COPY, REPRODUCE, DISTRIBUTE OR ALTER THIS PLAN IN WHOLE OR IN PART WITHOUT THE WRITTEN PERMISSION OF FARLEY, SMITH & DENIS SURVEYING LTD.
© FARLEY, SMITH & DENIS SURVEYING LTD., 2024.

FARLEY, SMITH & DENIS SURVEYING LTD.

ONTARIO LAND SURVEYORS
CANADA LAND SURVEYORS

Unit 275, 30 COLONNADE ROAD, OTTAWA, ONTARIO K2E 7J6
TEL. (613) 727-8226 E-mail: fdsurveys@bellnet.ca

FILE NO. - 110-24