

PROJET | PAYSAGE

24 Mont-Royal O. Bureau 801 Montréal Québec H2T 2S2
T: 514.849.7700 F: 514.849.2027 info@projetpaysage.com



CONCEPT IMAGE, LANDSCAPE DESIGN MIGHT VARY

CLIENT: **CEPEO**

PROJET: **CEPEO LOUISE-ARBOUR**

Landscape Architecture

<u>SHEET</u>	<u>TITLE</u>	<u>SCALE</u>
AP-10	SITE PLAN	1:100
AP-20	DESCRIPTION PLAN	1:100
AP-30	PLANTING PLAN	1:100
AP-50	DETAILS	variable
AP-51	DETAILS	variable
AP-52	PLANTING DETAILS	variable

In collaboration with:

Architecture

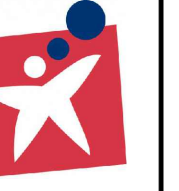
HOBIN ARCHITECTURE

63 Pamilla St
Ottawa, ON.
T. 613.238.7200
C. mail@hobinarc.com

Civil

STANTEC

400-1331 Clyde Avenue
Ottawa ON
T. 613.722.4420



LEGEND

- Lot limit
- - - Intervention limit
- Top level soil slope
- Bottom level soil slope
- Proposed deciduous trees and shrubs
- Proposed coniferous trees and shrubs
- Perennials and grasses
- Turf
- Pavers
- Climbing wall
- Lighting, see lighting plan

Revisions

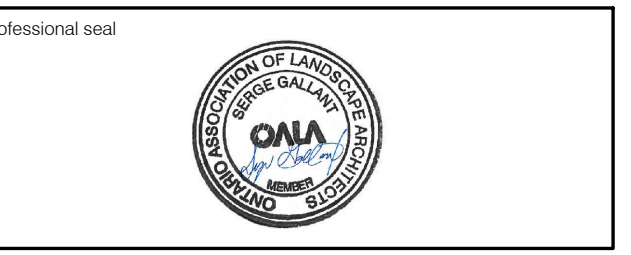
No	Description	Accr	Date
1	Issued for site plan application	S.G.	28/03/25
2	Issued for site plan application	S.G.	08/04/25
3	Issued for 33%	S.G.	24/04/25
4	Issued for site plan control	S.G.	24/04/25

DO NOT USE FOR CONSTRUCTION

- Notes:**
- The Contractor must verify all site existing conditions before beginning the work and inform the Project Director of any errors, omissions or contradictions.
 - Existing grades indicated on the plan come from the survey provided by the owner.
 - The Contractor must not cut down any existing vegetation without the approval of the Project Director.
 - Implementation of the works on site must be approved by the Project Director.
 - The Contractor must use the CAD file for implementation of all work.
 - The contractor must verify the amounts specified in the schedule and notify the landscape architect of any errors, omissions or contradictions before the close of the bid.

PROJET | PAYSAGE

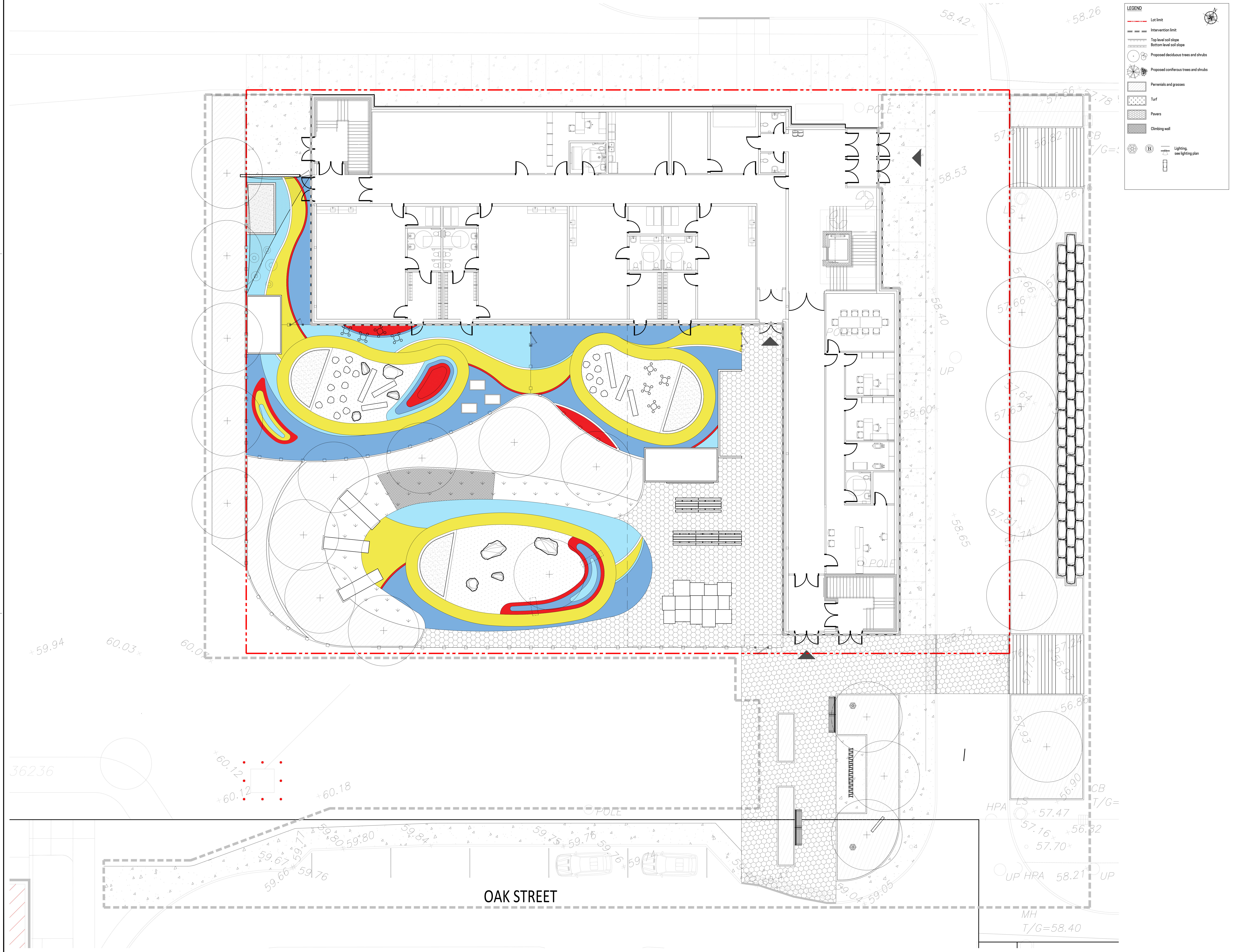
24 Mont-Royal O. Bureau 801. Montréal Québec H2T 2S2
T: 514 849 7700 F: 514 849 2027 info@projetpaysage.com



Project name
CEPEO LOUISE-ARBOUR

Drawing title
SITE PLAN

Scale: 1:100
Designed by: S. Gallant
Approved by: S. Gallant
Date: March 2025
Project No: **AP-10**
Drawing No: **24-844**



OAK STREET

LEGEND

--- Lot limit
 --- Intervention limit
 --- Proposed levels
 TW Top low wall
 TB Top border
 TS Top staircase
 TT Top soil slope
 TD Top drain
 BH Bottom low wall
 BB Bottom border
 BS Bottom staircase
 BT Bottom soil slope
 HP Highpoint

--- High level soil slope
 --- Bottom level soil slope

Revisions
 (B) Lighting, see lighting plan
 Tree pt., see details
 Planting bed, see planting plan
 Grass or seeding, see planting plan

Liste des détails sur plans

01 Pavés
 02 Paved in place concrete surface
 03 Poured in place rubber surface
 04 Playground Sand
 05 Wood-chip surface

Site furniture
 20 Small round table, 4 seats
 21 Picnic table
 22 Stacking stones
 23 Tree log
 24 Block board
 25 Side
 26 Tunnel
 27 Agave
 28 Climbing wall
 29 Bike rack
 30 Ropedbeds
 31 Shed
 32 Park bench
 33 Shade structure
 34 Boulder
 35 Signage

Fences, handrails and guardrails
 40 Metal fence typ. 2.0m of height
 41 Metal interactive fence typ. 2.0m of height
 42 Metal gate typ. 2.0m of height
 43 Wooden fence typ. 2.0m of height

Walls, stairs and curbs
 60 Concrete stairs
 61 Stone seating area

No.	Description	Accr.	Date
1	Issued for site plan application	S.G.	28/03/25
2	Issued for site plan application	S.G.	08/04/25
3	Issued for 33%	S.G.	24/04/25
4	Issued for site plan control	S.G.	24/04/25

DO NOT USE FOR CONSTRUCTION

- Notes:**
- The Contractor must verify all site existing conditions before beginning the work and inform the Project Director of any errors, omissions or contradictions.
 - Existing grades indicated on the plan come from the survey provided by the owner.
 - The Contractor must not cut down any existing vegetation without the approval of the Project Director.
 - Implementation of the works on site must be approved by the Project Director.
 - The Contractor must use the CAD file for implementation of all work.
 - The contractor must verify the amounts specified in the schedule and notify the landscape architect of any errors, omissions or contradictions before the close of the bid.

PROJET | PAYSAGE
 24 Mont-Royal O. Bureau 801. Montréal Québec H2T 2S2
 T: 514 849 7700 F: 514 849 2027 info@projetpaysage.com

Professional seal

Project name
CEPELOUISE-ARBOUR

Drawing title
DESCRIPTION PLAN

Scale
1:100

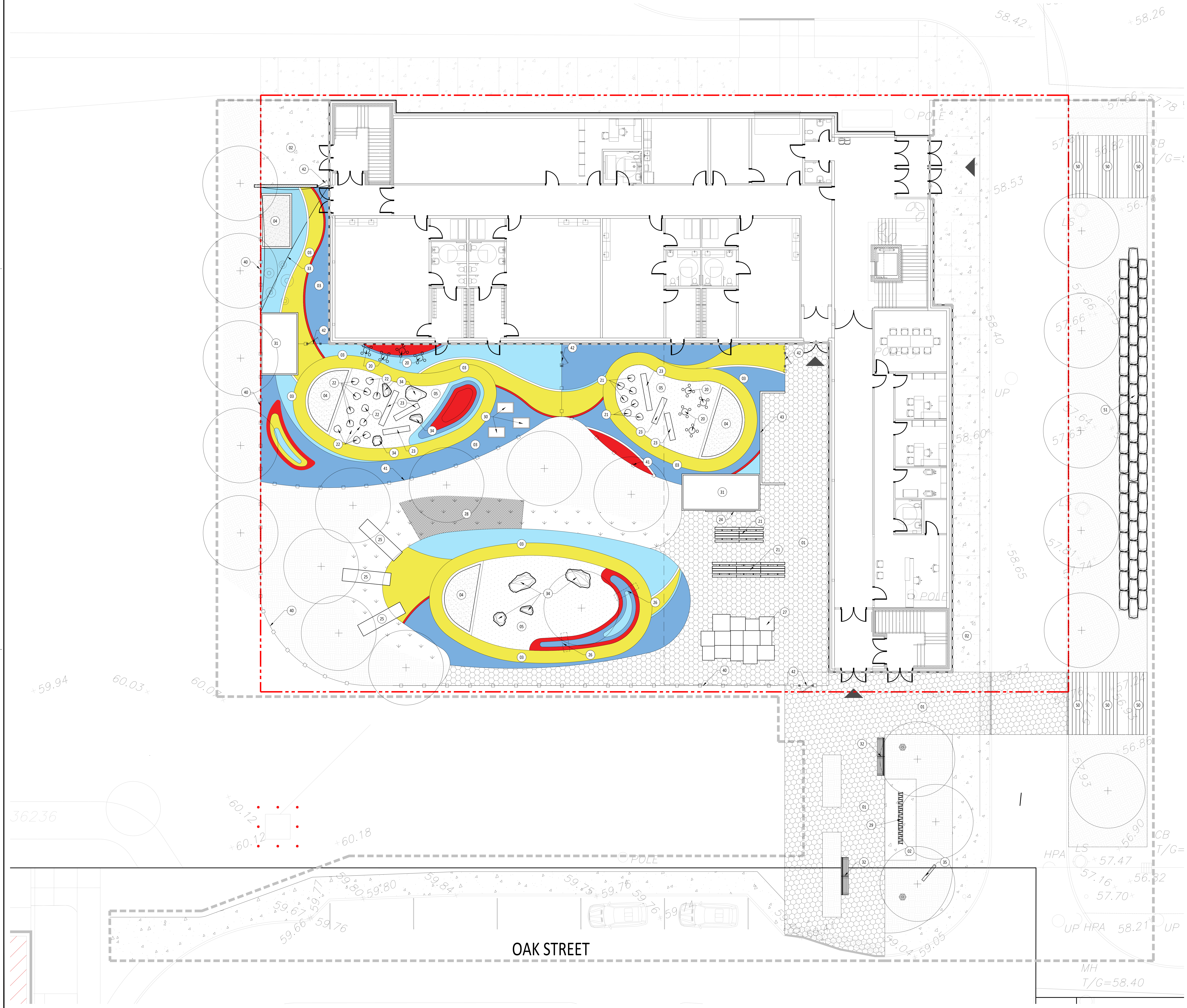
Designed by
 S. Gallant

Approved by
 S. Gallant

Date
 March 2025

Project No.
AP-20

24-844



Revisions	No	Description	Accr	Date
1	Issued for site plan application	S.G.		28/03/25
2	Issued for site plan application	S.G.		08/04/25
3	Issued for 33%	S.G.		24/04/25
4	Issued for site plan control	S.G.		24/04/25

DO NOT USE FOR CONSTRUCTION

LEGEND

- Lot limit
- Intervention limit
- Proposed deciduous trees and shrubs
- Proposed coniferous trees and shrubs
- Perennials and grasses
- Turf
- Planting key

DECIDUOUS TREES

Q10	10m	see plan
Q15	15m	see plan
Q20	20m	see plan
Q25	25m	see plan
Q30	30m	see plan
Q35	35m	see plan
Q40	40m	see plan
Q45	45m	see plan
Q50	50m	see plan

DECIDUOUS SHRUBS

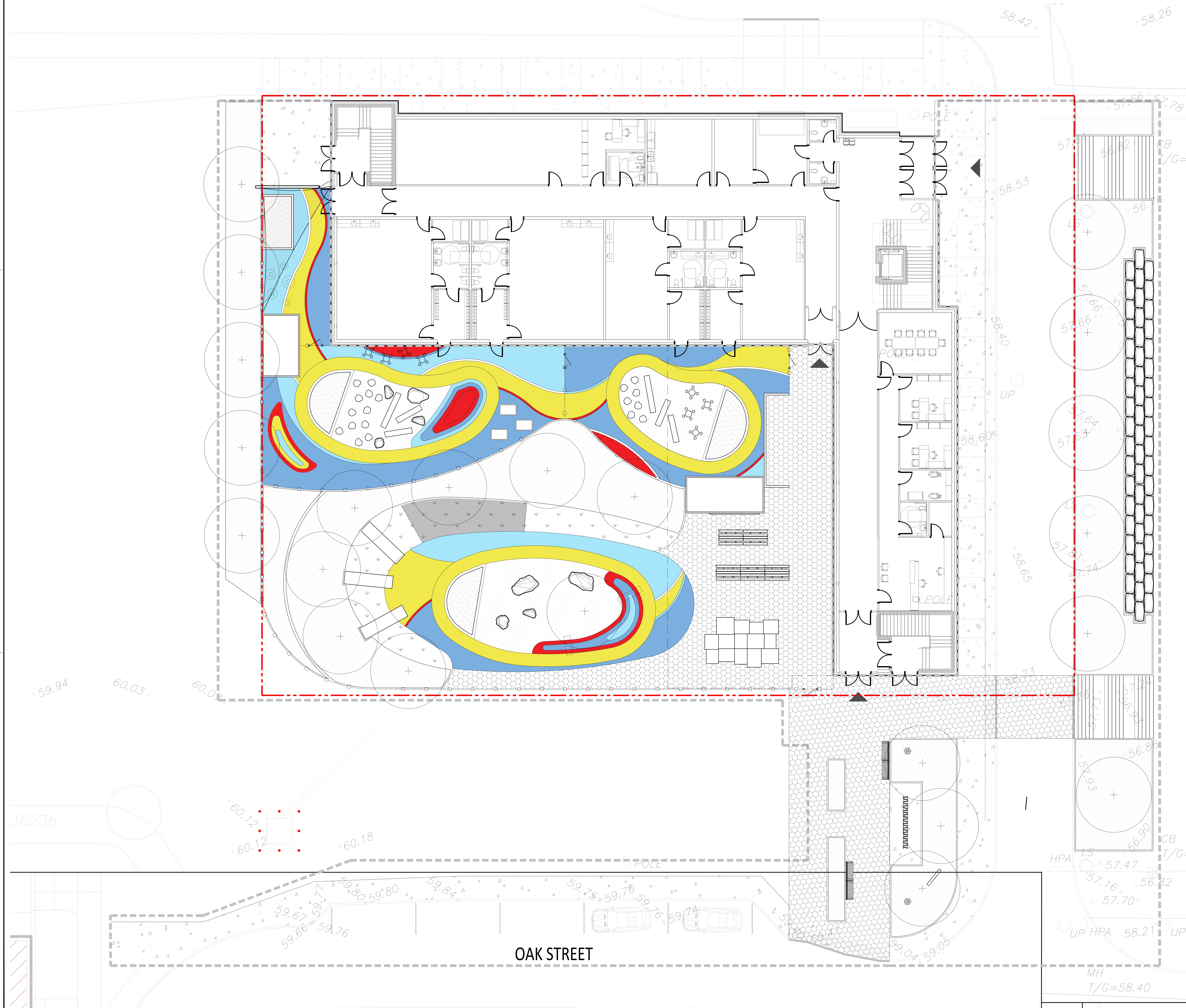
S10	10cm	see plan
S15	15cm	see plan
S20	20cm	see plan
S25	25cm	see plan
S30	30cm	see plan
S35	35cm	see plan
S40	40cm	see plan
S45	45cm	see plan
S50	50cm	see plan

PERENNIALS

P10	10cm	see plan
P15	15cm	see plan
P20	20cm	see plan
P25	25cm	see plan
P30	30cm	see plan
P35	35cm	see plan
P40	40cm	see plan
P45	45cm	see plan
P50	50cm	see plan

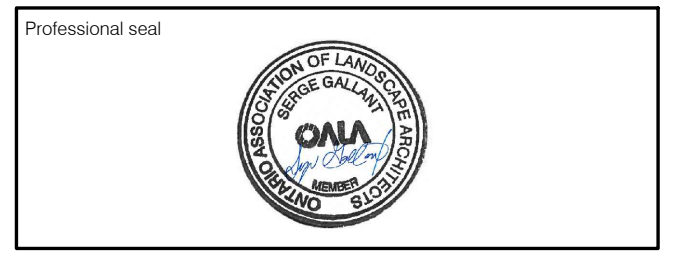
ORNAMENTAL GRASSES

G10	10cm	see plan
G15	15cm	see plan
G20	20cm	see plan
G25	25cm	see plan
G30	30cm	see plan
G35	35cm	see plan
G40	40cm	see plan
G45	45cm	see plan
G50	50cm	see plan



- Notes:**
- The Contractor must verify all site existing conditions before beginning the work and inform the Project Director of any errors, omissions or contradictions.
 - Existing grades indicated on the plan come from the survey provided by the owner.
 - The Contractor must not cut down any existing vegetation without the approval of the Project Director.
 - Implementation of the works on site must be approved by the Project Director.
 - The Contractor must use the CAD file for implementation of all work.
 - The contractor must verify the amounts specified in the schedule and notify the landscape architect of any errors, omissions or contradictions before the close of the bid.

PROJET | PAYSAGE
 24 Mont-Royal O. Bureau 801, Montréal, Québec H2T 2S2
 T: 514 849 7700 F: 514 849 2027 info@projetpaysage.com



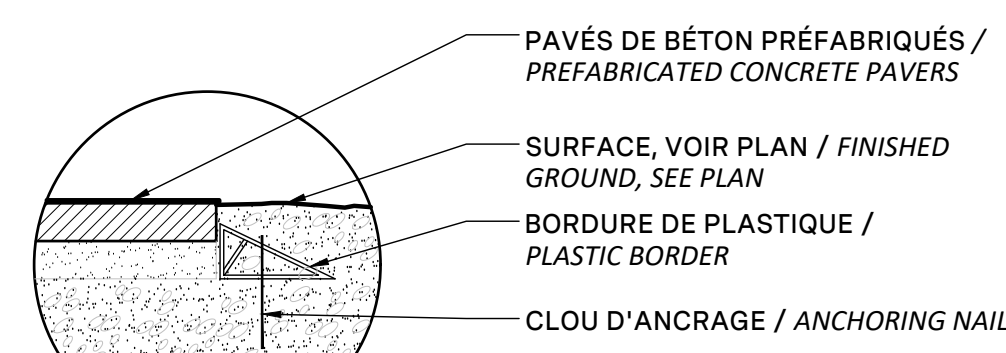
Project name
CEPEO LOUISE-ARBOUR

Drawing title
PLANTING PLAN

Scale: 1:100
 Designed by: S. Gallant
 Approved by: S. Gallant
 Date: March 2025
AP-30
 24-844

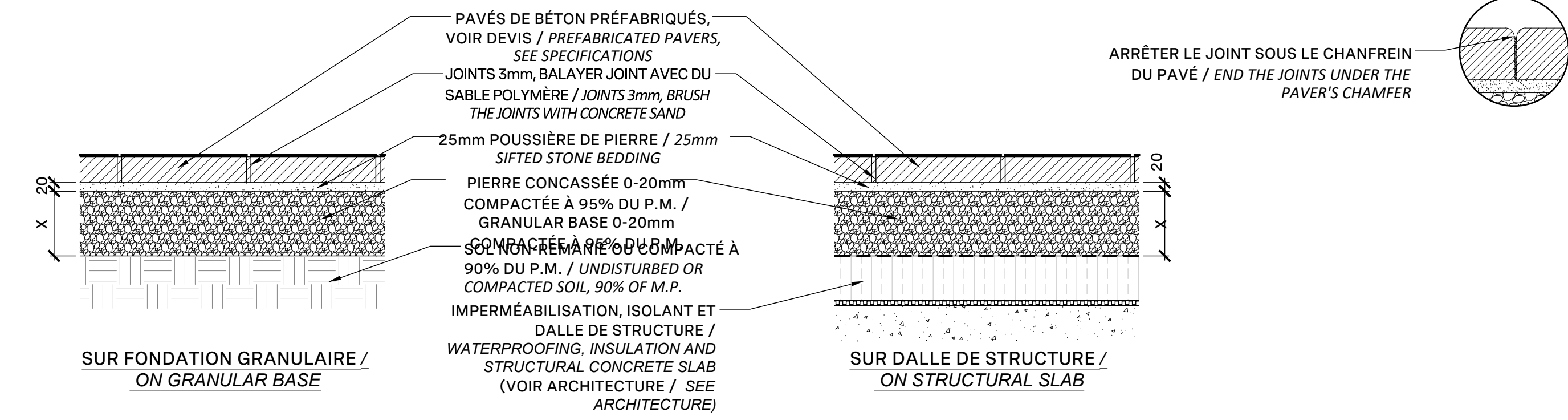
Revisions	No	Description	Accr	Date
1	Issued for site plan application	S.G.		28/03/25
2	Issued for site plan application	S.G.		08/04/25
3	Issued for 33%	S.G.		24/04/25
4	Issued for site plan control	S.G.		24/04/25

DO NOT USE FOR CONSTRUCTION

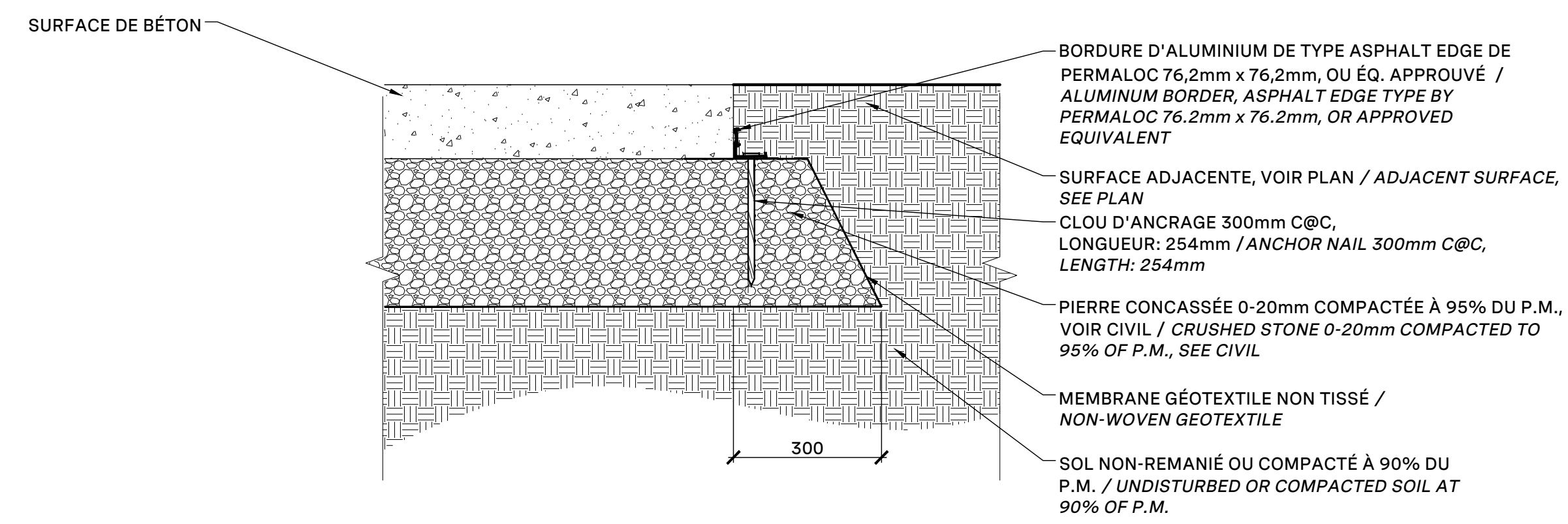


- PAVÉS DE BÉTON PRÉFABRIQUÉS / PREFABRICATED CONCRETE PAVERS
- SURFACE, VOIR PLAN / FINISHED GROUND, SEE PLAN
- BORDURE DE PLASTIQUE / PLASTIC BORDER
- CLOU D'ANCRAGE / ANCHORING NAIL

NOTE:
 - SE RÉFÉRER AUX SPÉCIFICATIONS POUR LES DIRECTIVES D'INSTALLATION / REFER TO SPECIFICATIONS FOR INSTALLATION GUIDELINES
 - LA LARGEUR DE PAVÉS NE PEUT PAS ÊTRE INFÉRIEURE À LA LONGUEUR INITIALE UNE FOIS COUPÉE / THE WIDTH OF THE PAVERS MAY NOT BE LESS THAN 1/3 OF THE LENGTH ONCE CUT

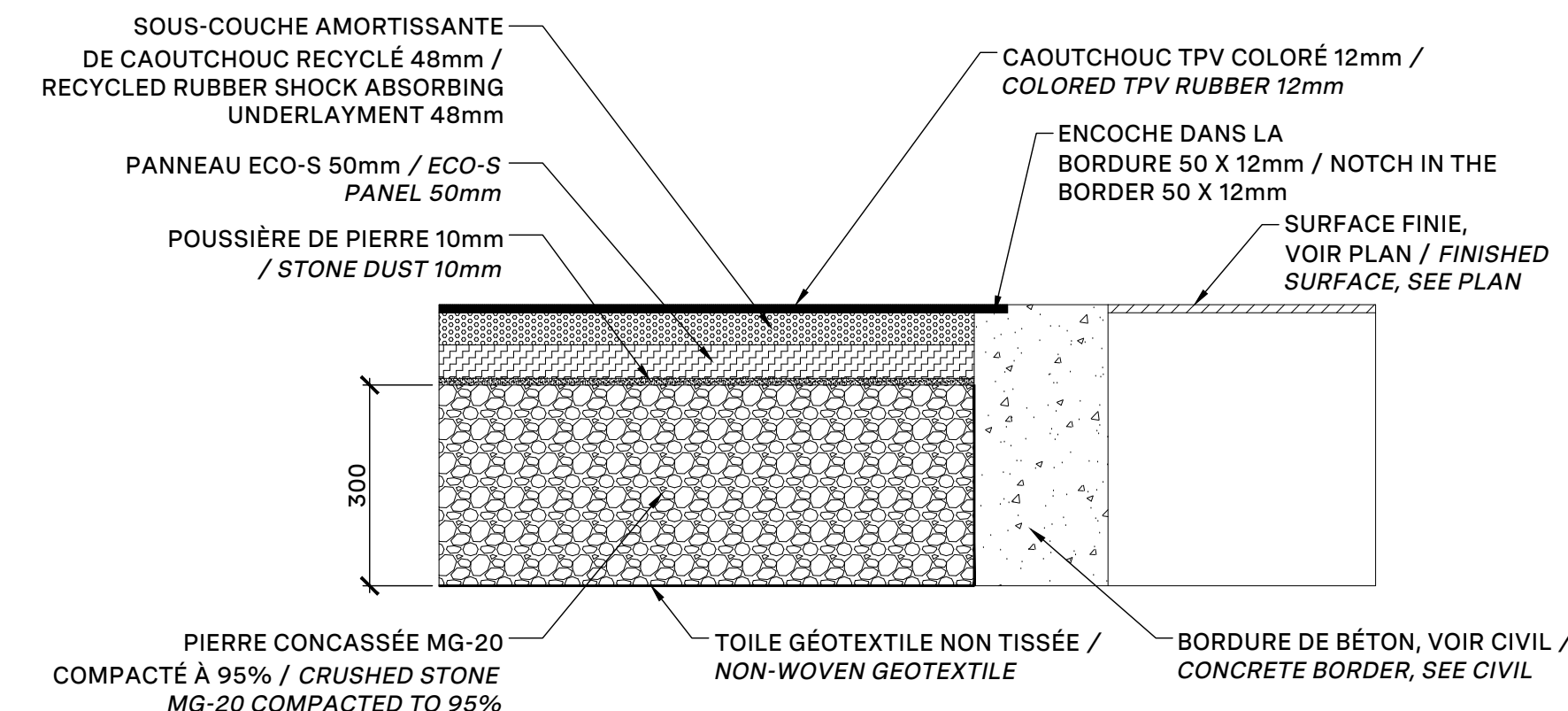


01 PAVÉS DE BÉTON PRÉFABRIQUÉS TYPE / TYPICAL PREFABRICATED PAVERS
 Echelle / Scale 1:10



NOTES:
 • POUR LES SPÉCIFICATIONS DU MÉLANGE DE BÉTON, VOIR DÉVIS 03.310
 • FAIRE UNE FINITION AU BALAI FIN, SANS TRACES DE TRIÈULE. VOIR DÉVIS 03.35.00
 • FOR CONCRETE MIX SPECIFICATIONS, SEE SPECIFICATION 03.310
 • APPLY A FINE BROOM FINISH, NO TROWEL MARKS. SEE SPECIFICATION 03.35.00

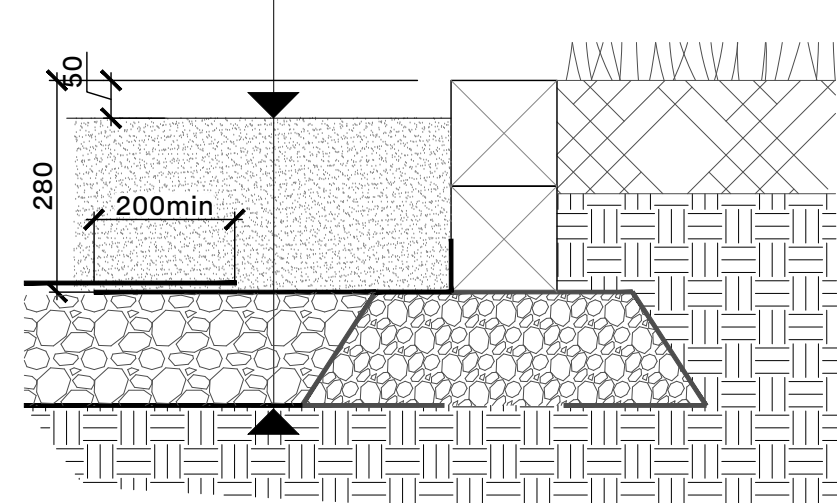
02 SURFACE DE BÉTON COULÉ / POURED-IN PLACE CONCRETE SURFACE
 Echelle / Scale 1:10



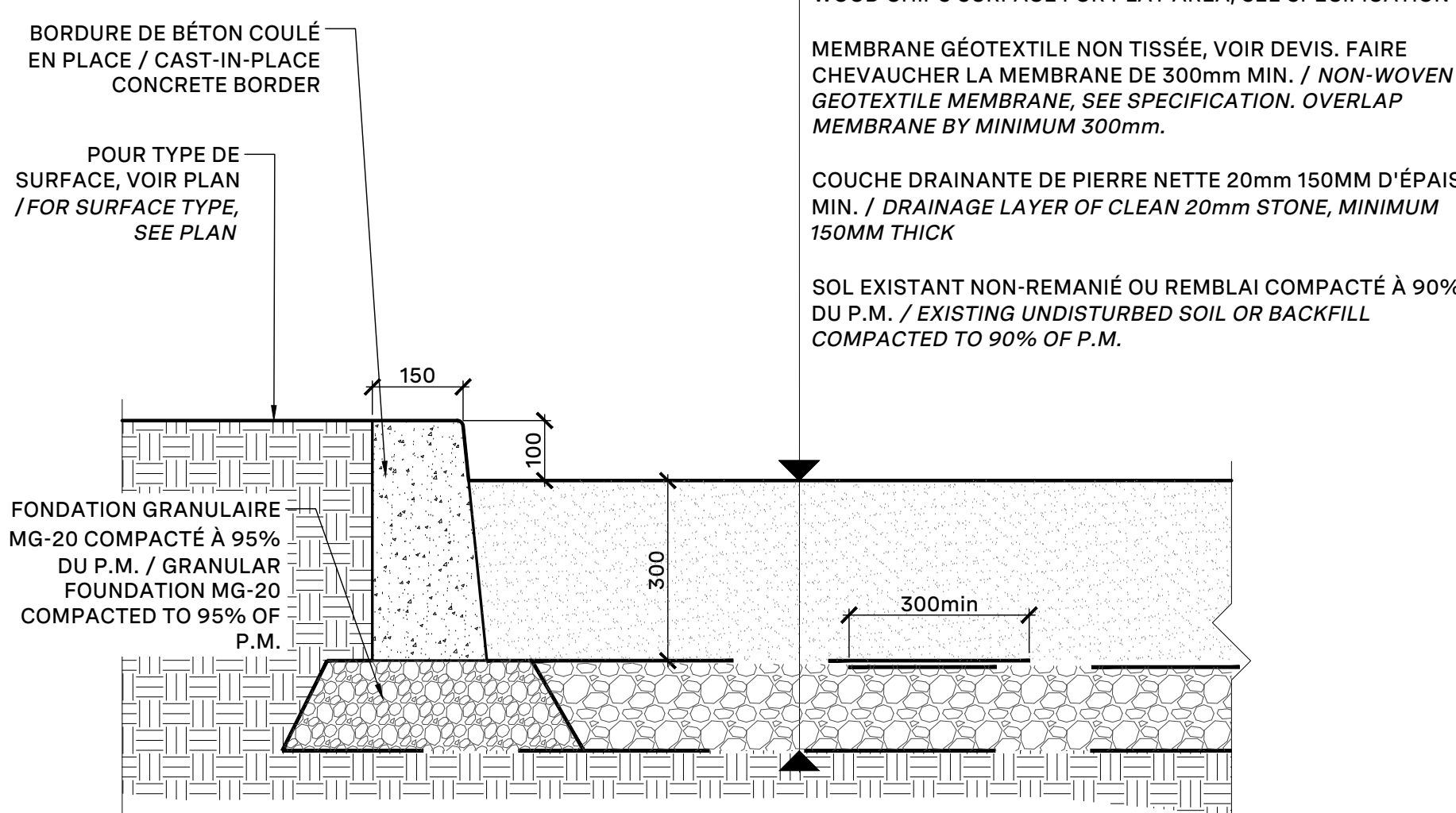
SURFACE AMORTISSANTE, VOIR NOTE / SHOCK-ABSORBING SURFACE, SEE NOTE

MEMBRANE GÉOTEXTILE NON TISSÉE, VOIR DÉVIS, VOIR DÉVIS. FAIRE CHEVAUCHER LA MEMBRANE DE 200mm MIN. / NON-WOVEN GEOTEXTILE. SEE SPECIFICATION. SEE SPECIFICATION. OVERLAP MEMBRANE BY MINIMUM 200mm.
 COUCHE DRAINANTE DE PIERRE NETTE 20mm 150MM D'ÉPAIS MIN. / DRAINAGE LAYER OF CLEAN 20mm STONE, MINIMUM 150MM THICK.
 SOL EXISTANT NON-REMANIÉ OU REMBLAI COMPACTÉ À 90% DU P.M. / EXISTING UNDISTURBED SOIL OR BACKFILL COMPACTED TO 90% OF P.M.

03 SURFACE DE CAOUTCHOUC COULÉ / POURED-IN PLACE RUBBER SURFACE
 Echelle / Scale 1:10



04 SURFACE DE SABLE / PLAYGROUND SAND
 Echelle / Scale 1:10



WOOD CHIPS SURFACE FOR PLAY AREA, SEE SPECIFICATION

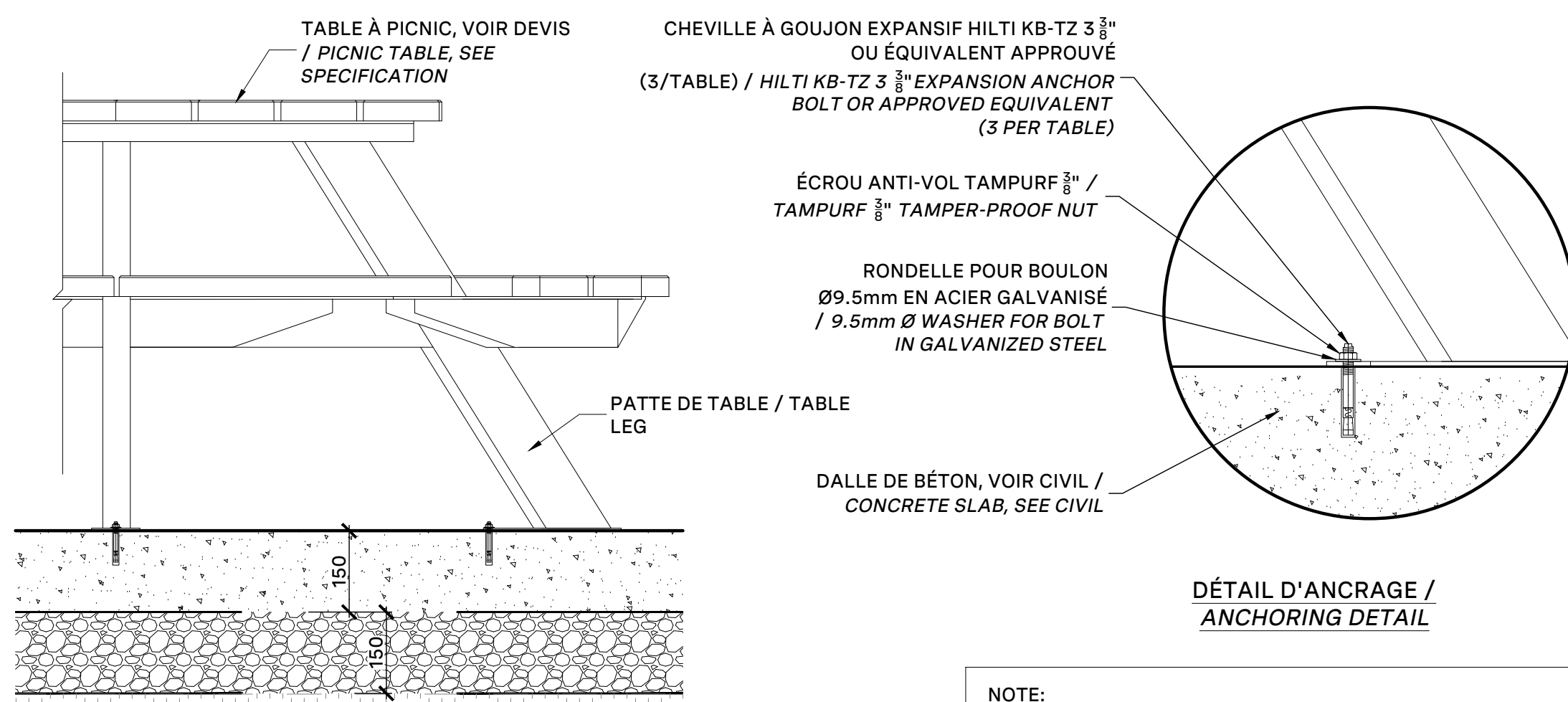
BORDURE DE BÉTON COULÉ EN PLACE / CAST-IN-PLACE CONCRETE BORDER

POUR TYPE DE SURFACE, VOIR PLAN / FOR SURFACE TYPE, SEE PLAN
 FONDATION GRANULAIRE MG-20 COMPACTÉ À 95% DU P.M. / GRANULAR FOUNDATION MG-20 COMPACTED TO 95% OF P.M.

MEMBRANE GÉOTEXTILE NON TISSÉE, VOIR DÉVIS. FAIRE CHEVAUCHER LA MEMBRANE DE 300mm MIN. / NON-WOVEN GEOTEXTILE MEMBRANE, SEE SPECIFICATION. OVERLAP MEMBRANE BY MINIMUM 300mm.
 COUCHE DRAINANTE DE PIERRE NETTE 20mm 150MM D'ÉPAIS MIN. / DRAINAGE LAYER OF CLEAN 20mm STONE, MINIMUM 150MM THICK.
 SOL EXISTANT NON-REMANIÉ OU REMBLAI COMPACTÉ À 90% DU P.M. / EXISTING UNDISTURBED SOIL OR BACKFILL COMPACTED TO 90% OF P.M.

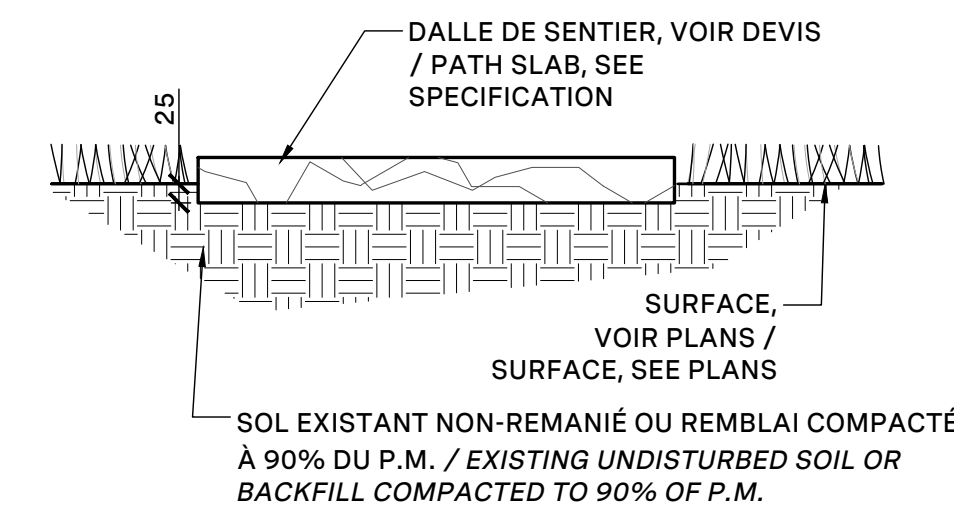
05 SURFACE AMORTISSANTE POUR AIRES DE JEUX EN PAILLIS ET BORDURE DE BÉTON COULÉ EN PLACE
 Echelle 1:10

20 TABLE RONDE / ROUND TABLE 4 SEATS
 Echelle / Scale 1:10



21 TABLE DE PIQUE-NIQUE / PICNIC TABLE
 Echelle / Scale 1:10

NOTE:
 • INSTALLER LES DALLES DE SENTIER DIRECTEMENT DÉPOSÉ SUR LA SURFACE.
 • PREVOIR UN ENFOUSSEMENT D'ENVIRON 25mm POUR ÉVITER TOUT MOUVEMENT NON DÉSIRABLE.
 • INSTALL PATH SLABS DIRECTLY ON THE SURFACE.
 • PROVIDE APPROXIMATELY 25mm EMBEDMENT TO PREVENT UNWANTED MOVEMENT.



22 PAS JAPONAIS / STEPPING STONES
 Echelle / Scale 1:10

23 TREE LOG / TRONC D'ARBRE
 Echelle / Scale 1:10

24 TABLEAU NOIR / BLACK BOARD
 Echelle / Scale 1:10

25 GLISSADE / SLIDE
 Echelle / Scale 1:10

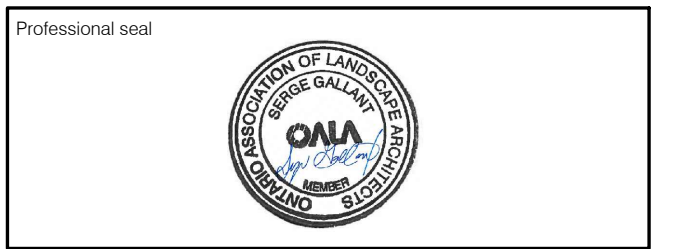
26 TUNNEL / TUNNEL
 Echelle / Scale 1:10

27 AGORA
 Echelle / Scale 1:10

- Notes:
- The Contractor must verify all site existing conditions before beginning the work and inform the Project Director of any errors, omissions or contradictions.
 - Existing grades indicated on the plan come from the survey provided by the owner.
 - The Contractor must not cut down any existing vegetation without the approval of the Project Director.
 - Implementation of the works on site must be approved by the Project Director.
 - The Contractor must use the CAD file for implantation of all work.
 - The contractor must verify the amounts specified in the schedule and notify the landscape architect of any errors, omissions or contradictions before the close of the bid.

PROJET | PAYSAGE

24 Mont-Royal O. Bureau 801. Montréal. Québec. H2T 2S2
 T: 514 849 7700 F: 514 849 2027 info@projetpaysage.com



Project name:
CEPEO LOUISE-ARBOUR

Drawing title:
CONSTRUCTION DETAILS

Designed by:
S. Gallant

Approved by:
S. Gallant

Date:
 March 2025

24-844

AP-50

