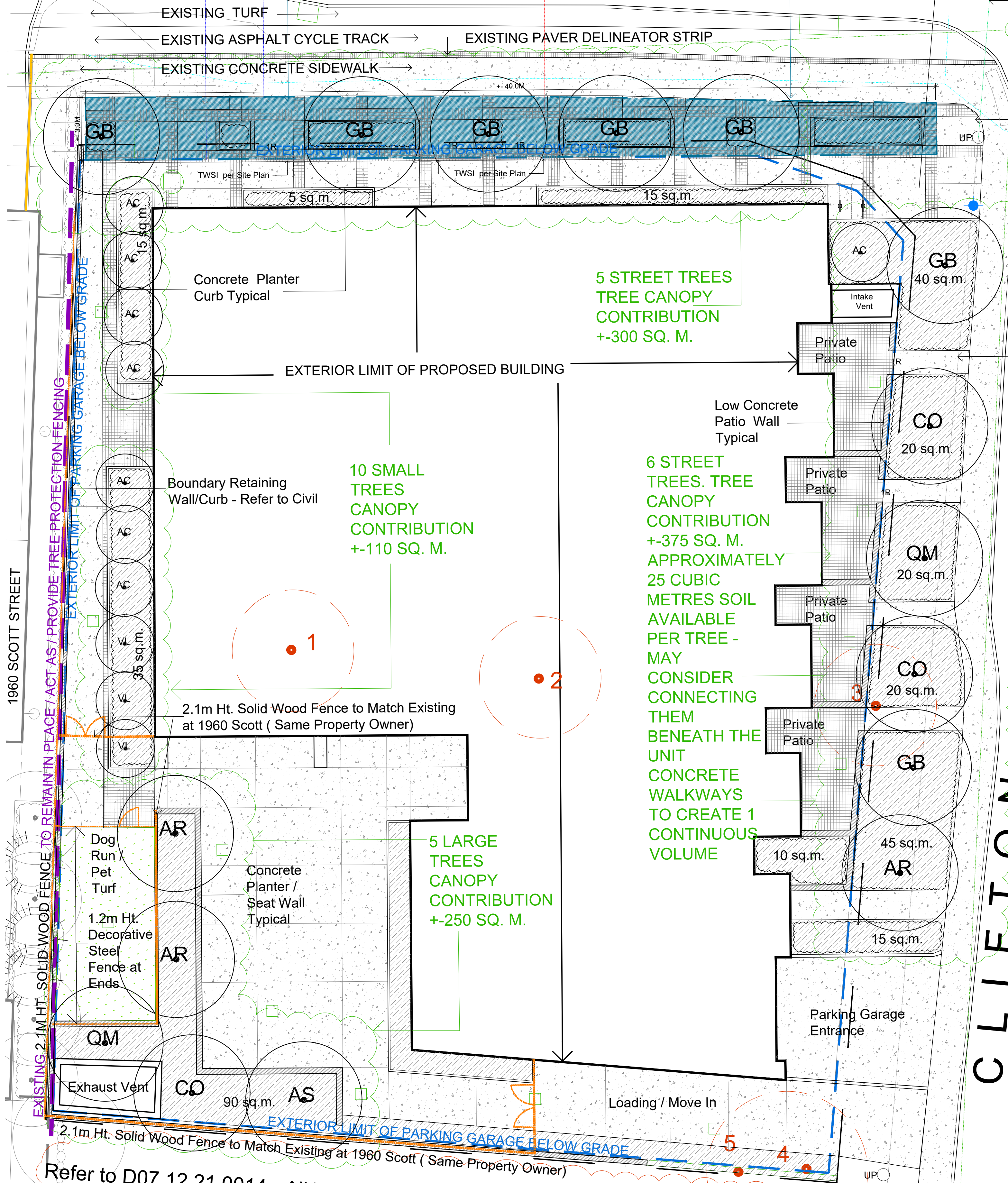


SCOTT STREET

+125 sq. m. Below Grade Rooting Volume x 0.8m Depth = 100 Cubic Metres for 5 Trees. 20 Cubic Metres per Tree



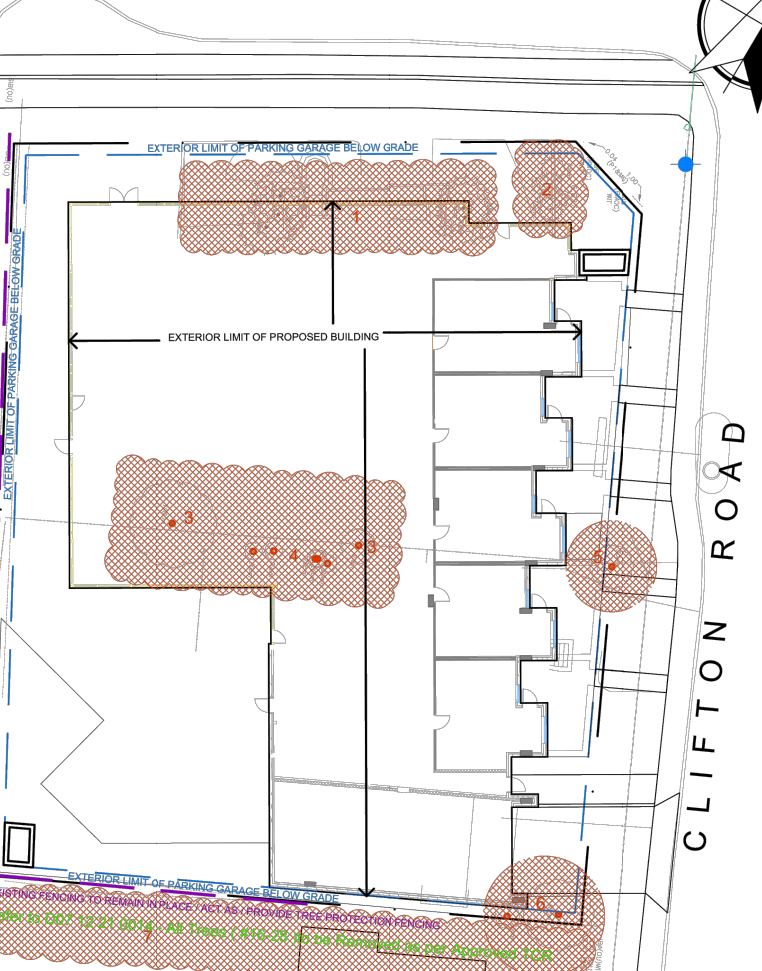
1960 SCOTT STREET

CLIFTON ROAD

Utility Pole / Overhead Wires Crossing Scott Street To Remain

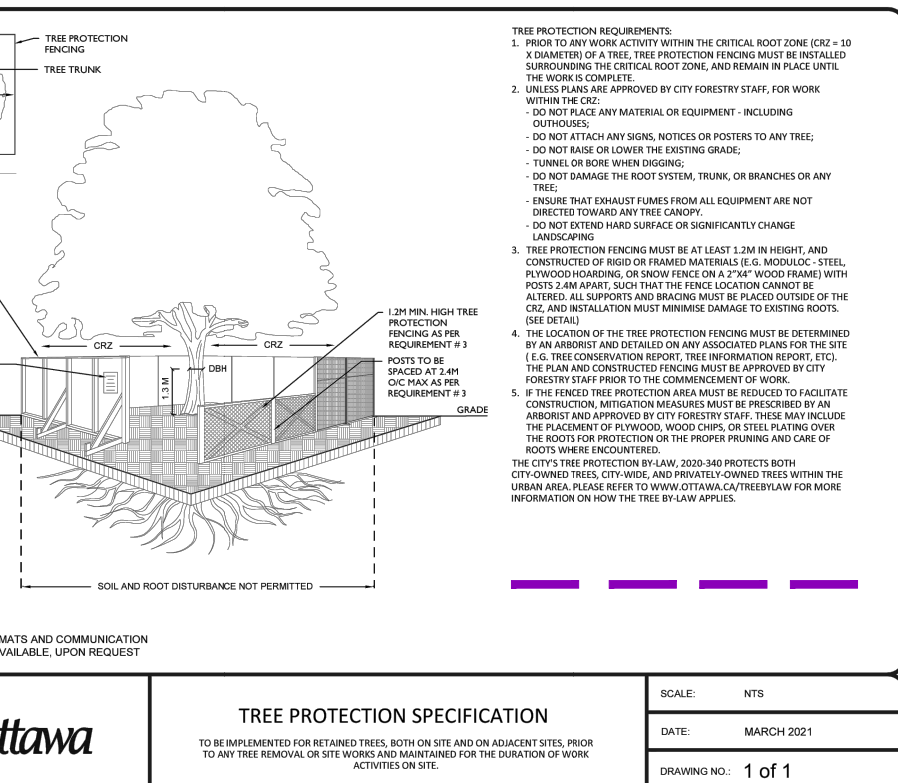
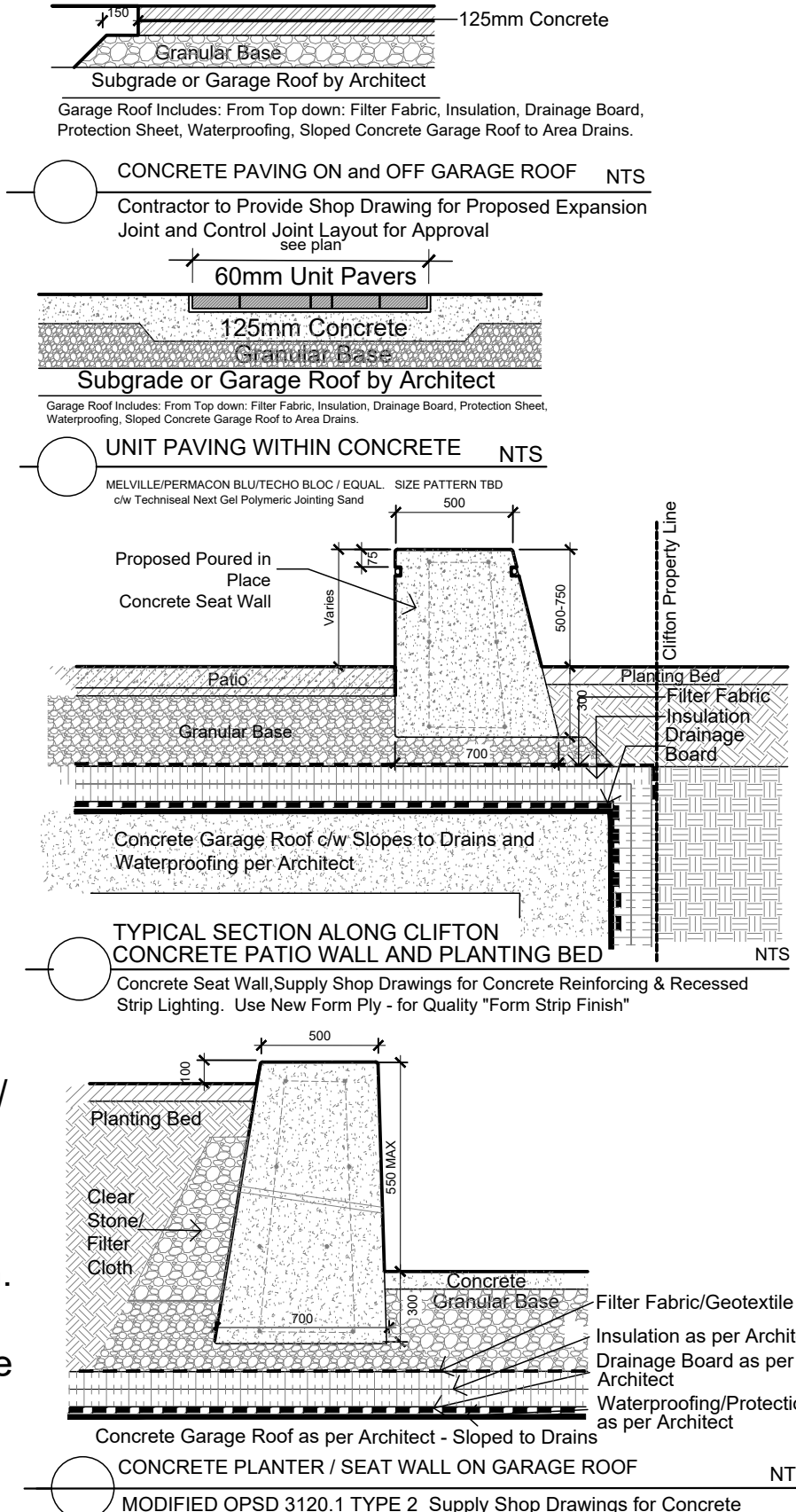
Utility Poles / Overhead Wires to be Removed along Clifton. New Hydro Service to be buried - Location TBD

EXISTING TREE TABLE



EXISTING TREE PLAN DETAIL
LEGAL DESCRIPTION
PART 1 - PLAN OF SURVEY
LOTS 24 AND 25
AND PART OF LOTS 45, 46,
47 AND 48
REGISTERED PLAN 369
CITY OF OTTAWA

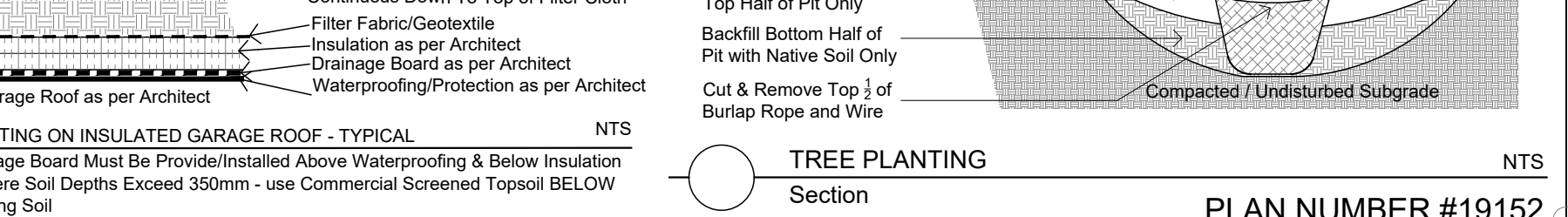
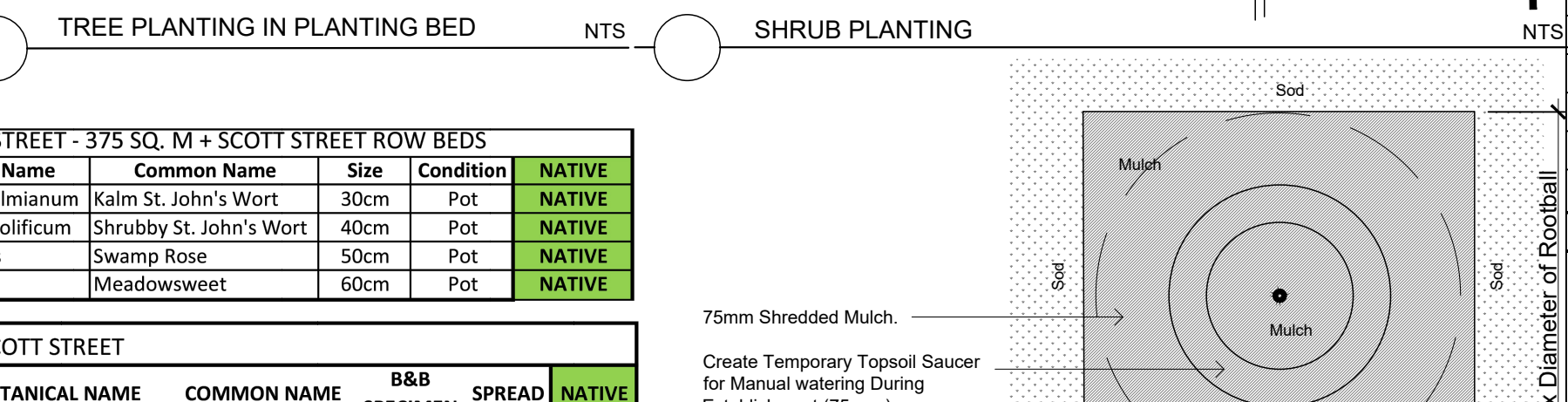
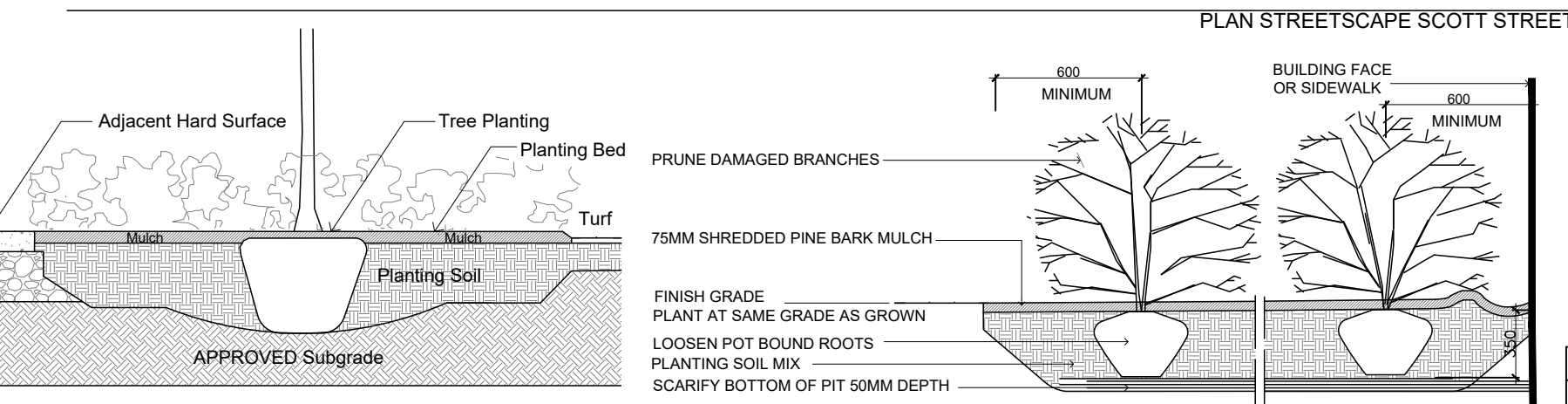
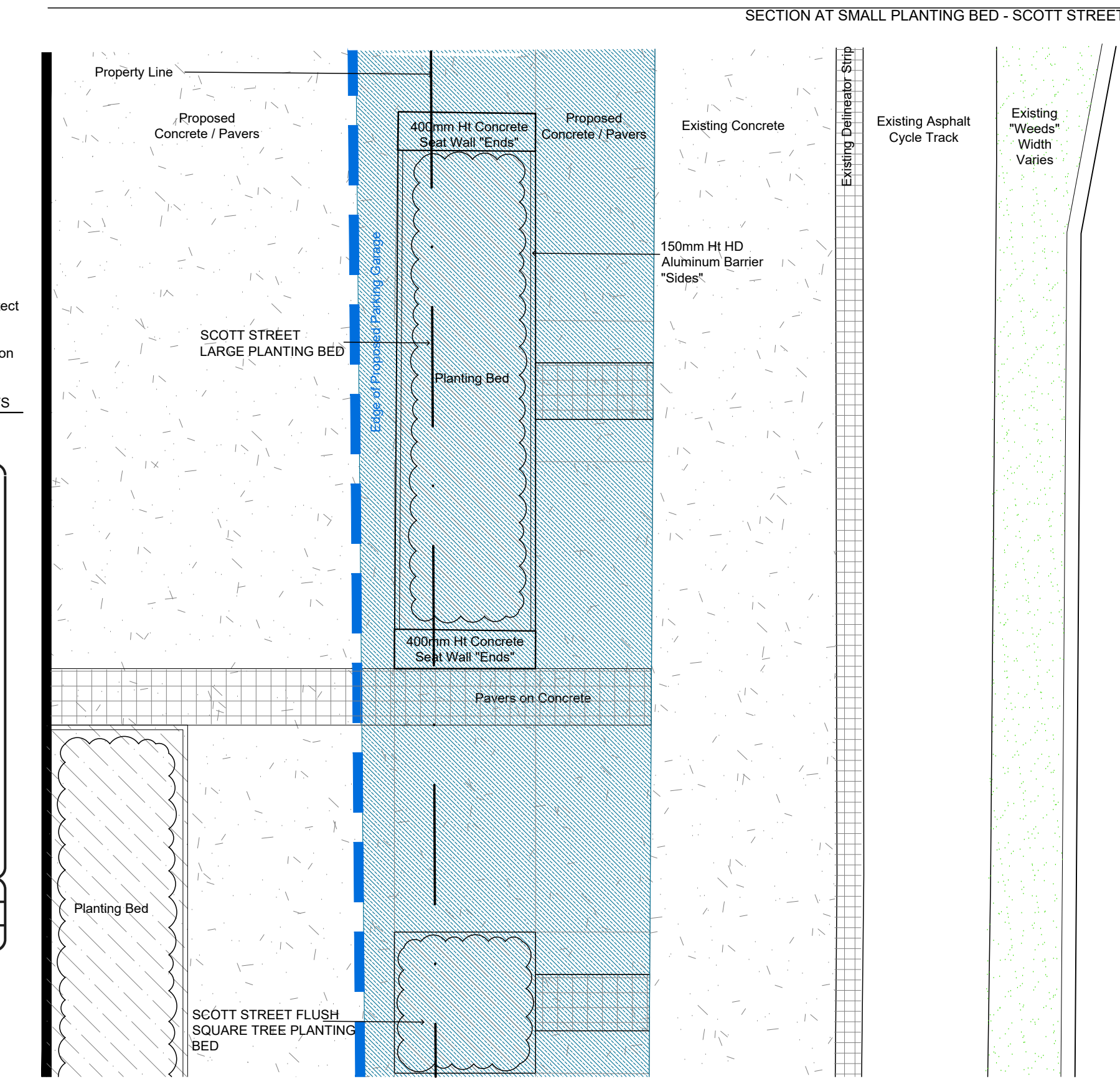
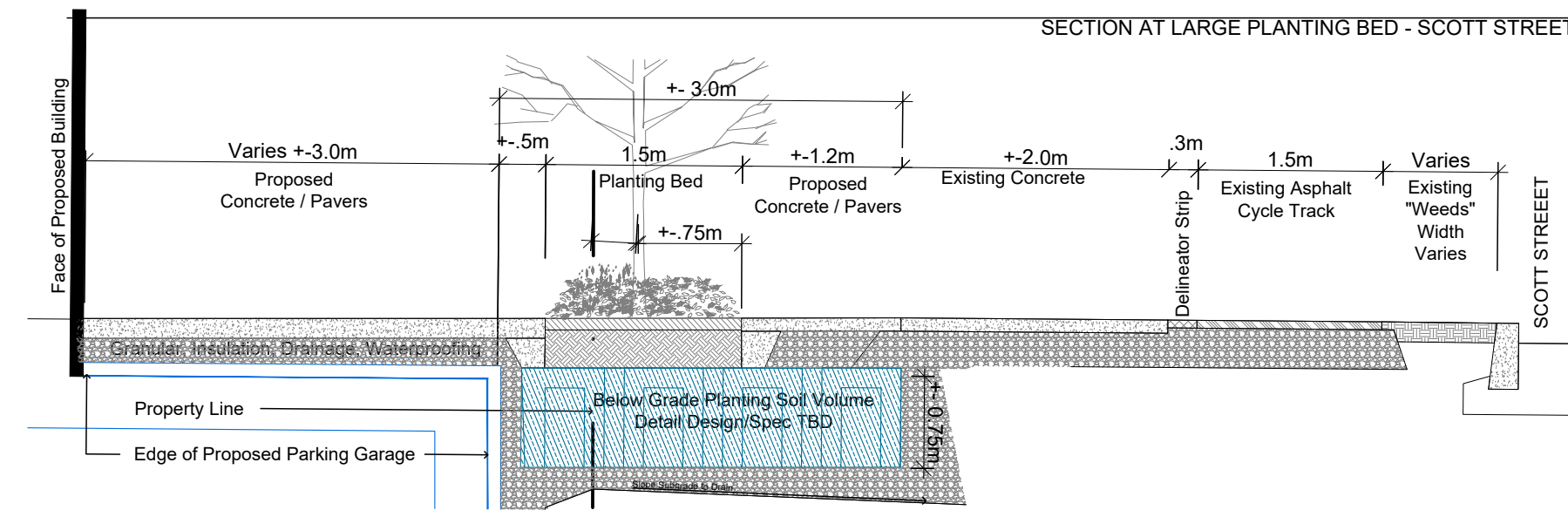
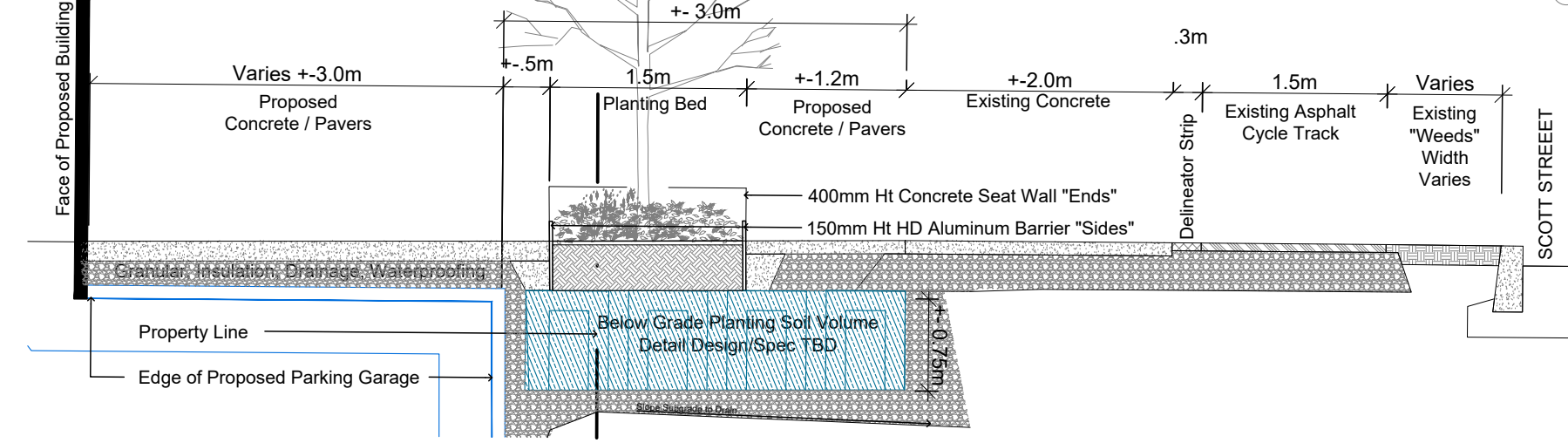
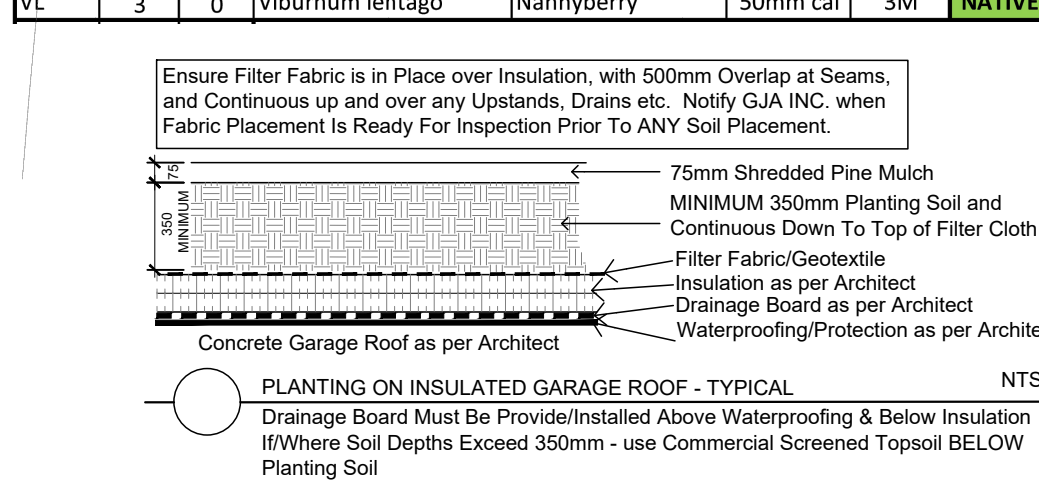
TYPE 1
35 MPa C1 125mm Thick, 6% Air Entrainment 600 Wire Mesh, Fire Exp. Joints at all Hard Edges. Sealed Control Joints (1" depth) as per per 2.0m O.C. minimum c/w MAGNESIUM TROWEL FINISH - TOOL EDGE FIRST, THEN WIPE OFF TOOL MARKS WHILE APPLYING FINISH



NO.	VARIETY	COMMON NAME	DESCRIPTION	OWNERSHIP	CONDITION	REMARKS	OTHER REMARKS
1	Thuja occidentalis	White Cedar	Multiple Clumps 0-15cm	Private	Good	REMOVE	
2	Juniperus virginiana	Eastern Red Cedar	Multiple 0-15cm	Private	EXCELLENT	REMOVE	
3	Acer negundo	Manitoba Maple	2 Trees - 120cm and 50cm	Private	POOR	REMOVE	
4	Acer saccharum	Sugar Maple	5 Trees @ 30cm each	Private	Good	REMOVE	
5	Acer saccharum	Sugar Maple	60cm Heavy Hydro Pruned	Private	POOR	REMOVE	
6	Refer to TCR D07 12 21 0014	Refer to TCR D07 12 21 0014	2 Trees - 90cm and 30cm	Private	Refer to TCR D07 12 21 0014	Listed for Removal # 28	
7	Refer to TCR D07 12 21 0014	Refer to TCR D07 12 21 0014	Refer to TCR D07 12 21 0014	Neighbours	Refer to TCR D07 12 21 0014	Listed for Removal # 16-25	

SHRUBS 1950 SCOTT STREET - 375 SQ. M + SCOTT STREET ROW BEDS						
Code	Qty.	Botanical Name	Common Name	Size	Condition	NATIVE
HK	225	Hypericum kalmianum	Kalm St. John's Wort	30cm	Pot	NATIVE
HP	175	Hypericum prolificum	Shrubby St. John's Wort	40cm	Pot	NATIVE
RP	75	Rosa palustris	Swamp Rose	50cm	Pot	NATIVE
SA	150	Spiraea alba	Meadowsweet	60cm	Pot	NATIVE

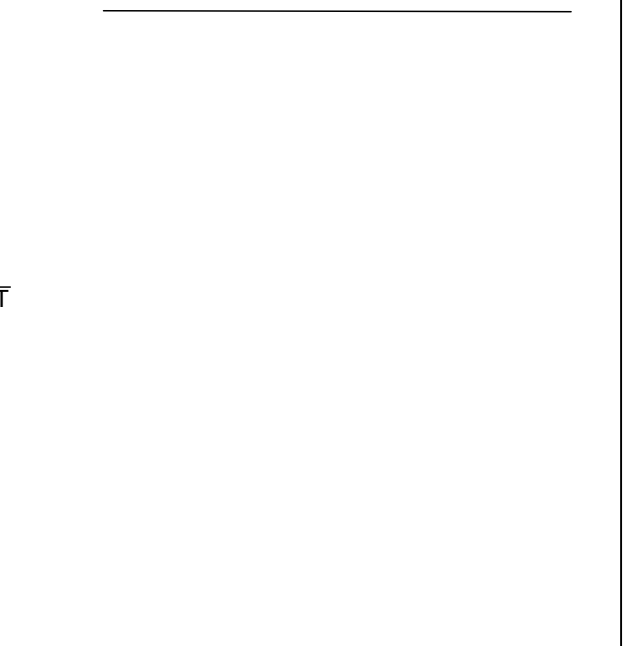
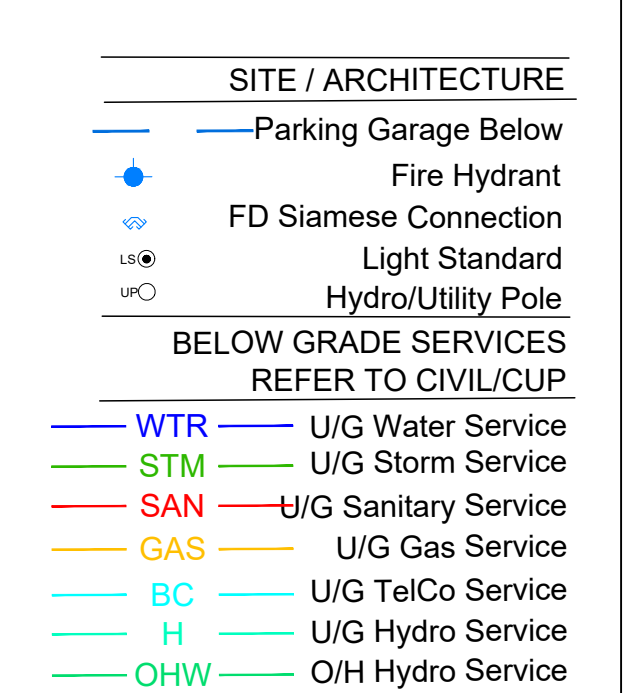
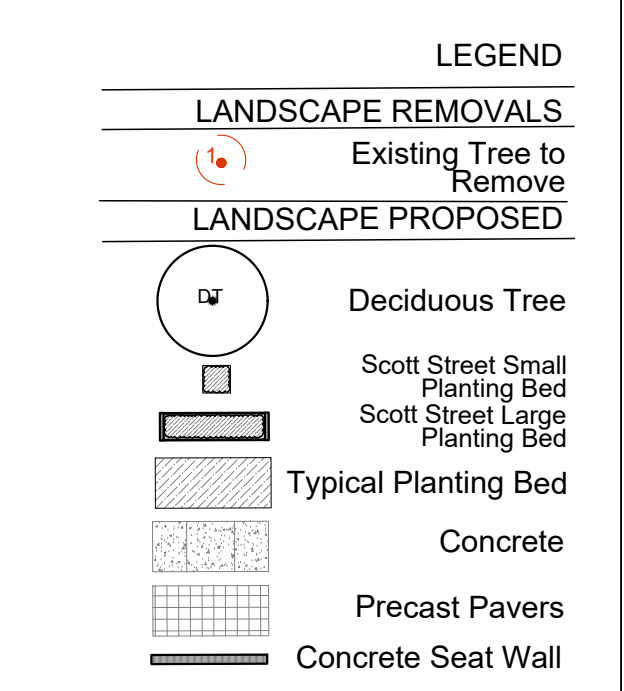
TREE SCHEDULE 1950 SCOTT STREET							
CODE	QUANTITY		BOTANICAL NAME	COMMON NAME	B&B SPECIMEN	SPREAD	NATIVE
	SITE	CITY					
AC	5	0	Amelanchier canadensis	Tree Serviceberry	50mm cal	5M	NATIVE
AR	2	1	Acer rubrum	Red Maple	60mm cal	12M	NATIVE
AS	1	0	Acer saccharum	Sugar Maple	80mm cal	15M	NATIVE
CO	1	2	Celtis occidentalis	Common Hackberry	60mm cal	18M	NATIVE
GB	0	7	Ginkgo biloba	Maidenhair Tree	70mm cal	12M	
QM	1	1	Quercus macrocarpa	Bur Oak	60mm cal	20M	NATIVE
VL	3	0	Viburnum lentago	Nannyberry	50mm cal	3M	NATIVE



Drawing Remains the Property of Copyright Reserved by GJA INC. Do Not Use or Reproduce Without Approval of Gino J. Aiello
| PLANTING MIX TO BE APPROVED BY LANDSCAPE ARCHITECT | PLANT MATERIAL TO MEET CNLA STANDARDS/BE APPROVED BY LANDSCAPE ARCHITECT PRIOR TO PLANTING ALL MATERIALS & WORK TO BE MAINTAINED UNTIL FINAL ACCEPTANCE, INCLUDE 1 YEAR WARRANTY FROM DATE OF FINAL ACCEPTANCE | REFER TO CIVIL ENGINEER'S DRAWING FOR ELEVATIONS / GRADING |
The Landscape Plan is to be read in conjunction with the grading, servicing, site and survey plan. All trees to be preserved on or directly adjacent to the site will be protected | Plant material are to be installed a minimum of 3.0m away from any part of any hydro transformer, 3.0m corridor between a fire hydrant and the curb, a 2.5m radius beside or behind a fire hydrant, 2.0m from any servicing/utility line or structure |



KEY PLAN



ISSUED FOR SPC	2025 04 17
5 per City Comments	2025 01 08
4 per City Comments	2024 12 13
3 per City Comments	2024 11 01
2 ZBLA	2024 09 24
1 SPC SUBMISSION 1	2024 07 31
0 REVIEW/COORDINATION	2024 06 00
# Revision	Date

Granite Private Equity
Limited Partnership
16 Concourse Gate, Suite 200 Ottawa, ON K2E 7S8

GJA INC.
GINO J. AIELLO | LANDSCAPE ARCHITECT
GJAL.COM | 613 286 5130 | GINO@GJAL.COM
110 DODDINGTON ROAD UNIT #11 OTTAWA ONTARIO K1T 2C2

MULTI UNIT
RESIDENTIAL
DEVELOPMENT
1950 SCOTT STREET

Landscape
Plan / TCR
L1
Scale: 1:125