

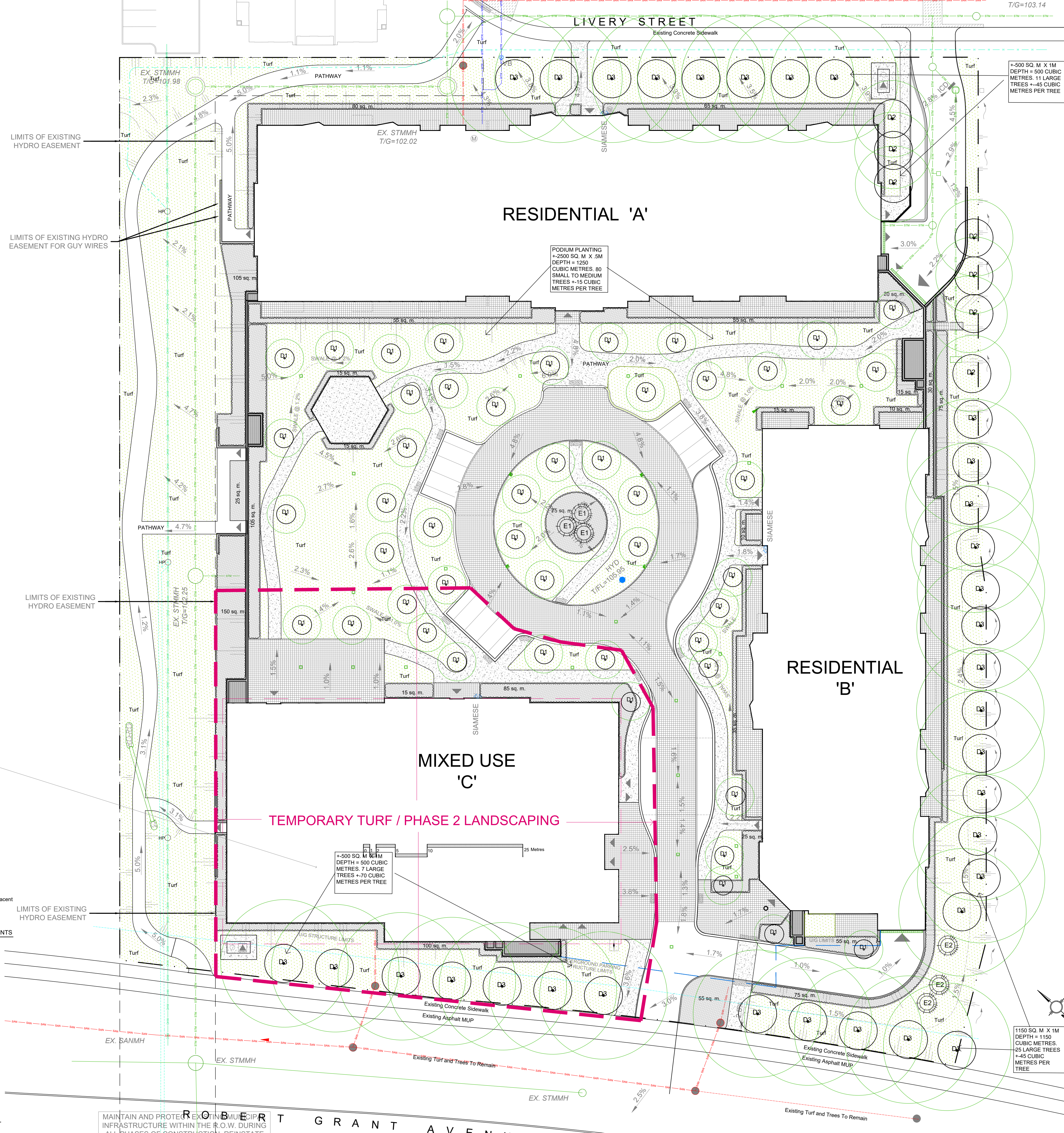
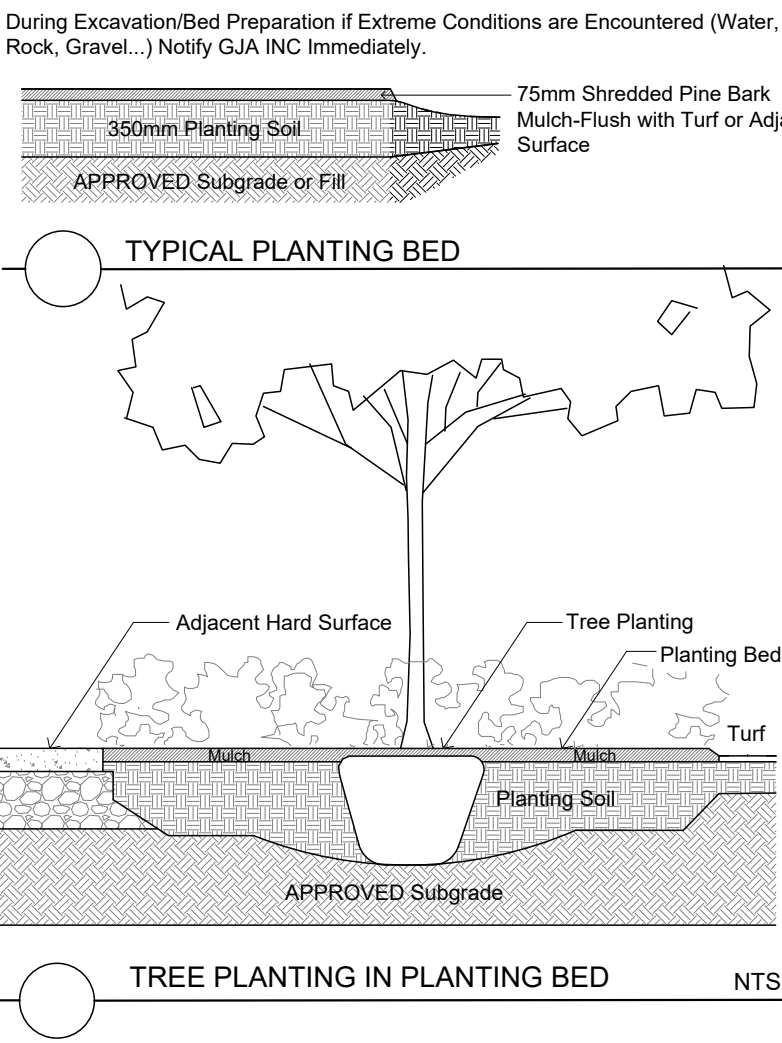
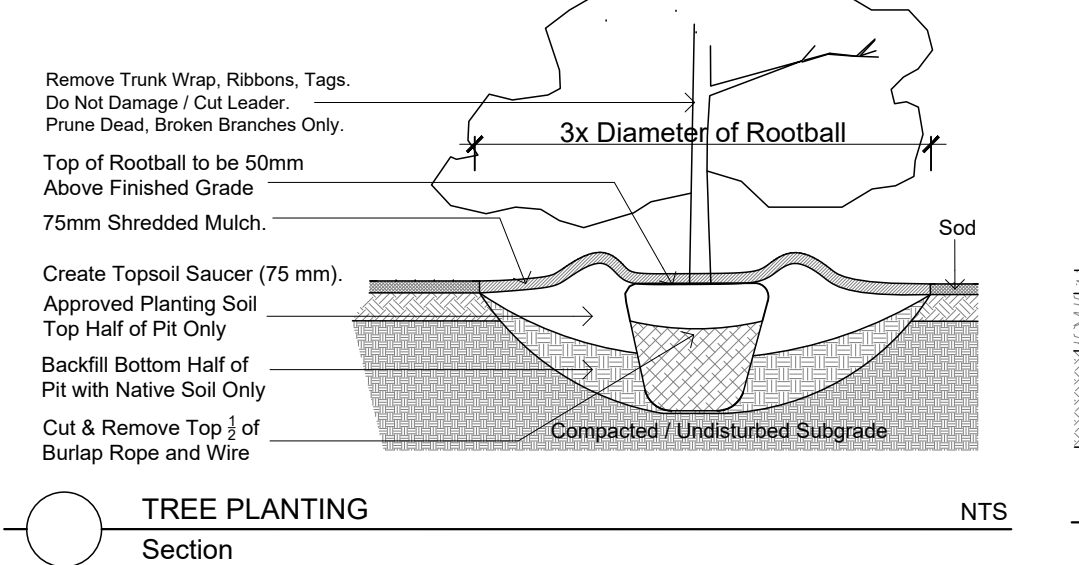
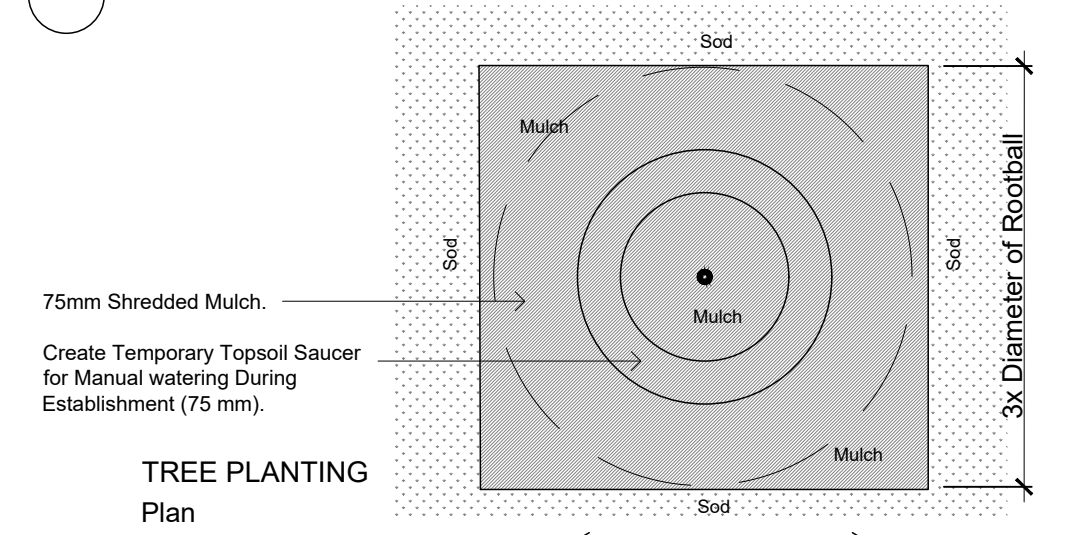
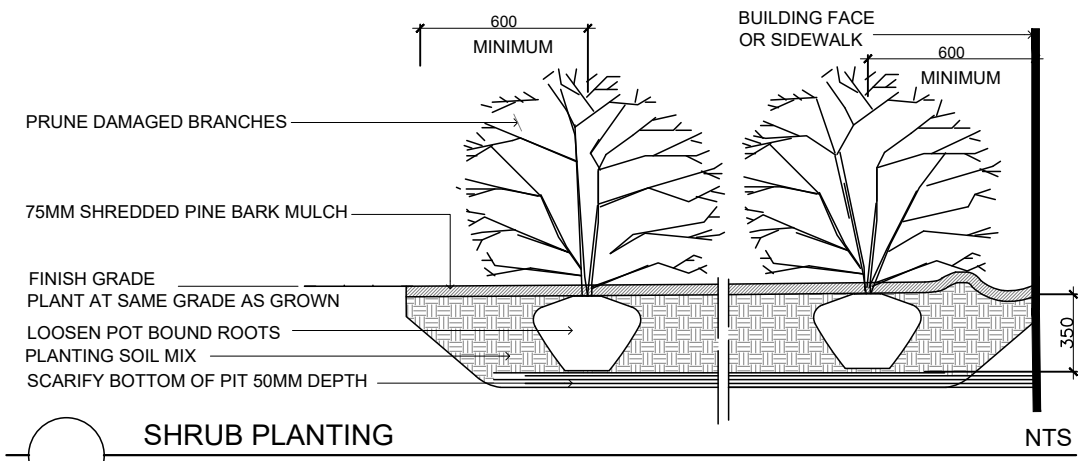
FOUNDATION PLANTING - 3' HT OR LESS

SHRUBS 5000 ROBERT GRANT KANATA TOTAL 580 SQ. M.					
Code	Qty.	Botanical Name	Common Name	Size	Condition
AU	250	Arctostaphylos Uva Ursi	Bearberry	30CM SPR	Pot
CD	75	Cotoneaster dammeri 'Coral Beauty'	Coral Beauty Cotoneaster	30CM SPR	Pot
HK	375	Hypericum kalmianum	St. John's Wort	40CMHT	Pot
PF	250	Potentilla fruticosa 'Abbotswood'	Abbotswood Potentilla	40CMHT	Pot
SB	175	Spiraea bumalis 'Dart's Red'	Dart's Red Spirea	40CMHT	Pot
JO	150	Juniperus chinensis 'Ontario Green'	Ontario Green Juniper	30CM SPR	Pot
PM	150	Pinus mugo var. pumilio	Mugho Pine	30CM SPR	Pot
TOTAL 1425					
PERENNIALS GROUNDCOVERS ORNAMENTAL GRASS 5000 ROBERT GRANT KANATA					
Code	Qty.	Botanical Name	Common Name	Condition	
25	Astilbe x ardensii	various Astilbe	9cm Pot		
25	Ajuga reptans	Ajuga	9cm Pot		
25	Allium	Ornamental Onion	9cm Pot		
75	Calamagrostis	Feather Reed Grass	9cm Pot		
25	Calamagrostis acutifolia 'Overdam'	Feather Reed Grass	9cm Pot		
25	Echinacea	Purple Coneflower	9cm Pot		
125	Geranium macrorrhizum	Bigroot Geranium	9cm Pot		
125	Geranium psilostemon 'Gerwat'	Roanme Geranium	9cm Pot		
75	Hemerocallis	various Specimen Daylily	9cm Pot		
25	Lilium	Lily	9cm Pot		
25	Pachysandra	Spurge	9cm Pot		
25	Parthenocissus tricuspidata	Boston Ivy	9cm Pot		
175	Panicum virgatum	Switch Grass	9cm Pot		
25	Sedum	Sedum	9cm Pot		
25	Thymus praecox	Creeping Thyme	9cm Pot		
25	Thymus serpyllum	Mother-of-Thyme	9cm Pot		
25	Vinca minor	Periwinkle	9cm Pot		
TOTAL 875					
SCREEN PLANTING - 3' HT- 15' HT.					

SHRUBS 5000 ROBERT GRANT KANATA TOTAL 785 SQ. M.TOTAL 1000 PLANTS					
Code	Qty.	Botanical Name	Common Name	Size	Condition
AC	75	Amelanchier canadensis	Serviceberry	100cm Ht.	Pot
CSF	55	Cornus sericea 'Flaviramea'	Yellowtwig Dogwood	50cm Ht.	Pot
CR	75	Cornus racemosa	Grey Dogwood	100cm Ht.	Pot
RA	95	Ribes aureum	Flowering Currant	50cm Ht.	Pot
RP	125	Rosa palustris	Swamp Rose	50cm Ht.	Pot
RT	75	Rhus typhina	Staghorn Sumac	30cm Ht.	Pot
SA	150	Symphoricarpos albus	Snowberry	50cm Ht.	Pot
SA	225	Spiraea alba	Meadowsweet	50cm Ht.	Pot
TC	75	Taxus cuspidata 'Nana'	Dwarf Japanese Yew	50cm SPR	Pot
TCM	50	Taxus cuspidata 'Monloo'	Emerald Spreader Yew	50cm SPR	Pot

TREE SCHEDULE - LEPINE CORP. RENES COURT 500 ROBERT GRANT						
CODE	QUANTITY	BOTANICAL NAME	COMMON NAME	B&B SPECIMEN	SPREAD	
D3	3	0	Acer x freemanii 'Autumn Blaze'	Autumn Blaze Freeman Maple	50mm cal.	15M
D3	3	0	Acer rubrum	Red Maple	50mm cal.	12M
D3	3	0	Acer saccharum	Sugar Maple	50mm cal.	15M
D2	1	0	Aesculus glabra	Ohio Buckeye	50mm cal.	10M
D1	3	0	Amelanchier canadensis	Tree Serviceberry	50mm cal.	4M
D1	3	0	Amelanchier laevis	Tree Serviceberry	50mm cal.	6M
D1	3	0	Asimina triloba	Paw Paw	50mm cal.	5M
D2	3	0	Betula papyrifera	Paper Birch	50mm cal.	10M
D1	5	0	Betula populifolia	Gray Birch	50mm cal.	5M
D1	3	0	Carpinus caroliniana	Hornbeam Bluebeech	50mm cal.	8M
D1	3	0	Carya ovata	Shagbark Hickory	50mm cal.	12M
D3	6	0	Celtis occidentalis	Common Hackberry	50mm cal.	18M
D1	1	0	Cornus alternifolia	Pagoda Dogwood	50mm cal.	8M
D1	1	0	Cornus racemosa	Grey Dogwood	50mm cal.	5M
D1	5	0	Crataegus crus-galli 'Inermis'	Thornless Cockspur Hawthorn	50mm cal.	8M
D3	3	0	Ginkgo biloba	Maidenhair Tree	50mm cal.	12M
D2	1	0	Gleditsia triacanthos 'Draves'	Street Keeper Locust	50mm cal.	10M
D3	3	0	Gymnocladus dioica	Kentucky Coffee Tree	50mm cal.	12M
D2	1	0	Magnolia acuminata	Cucumber Magnolia	50mm cal.	15M
D1	3	0	Malus 'Harvest Gold'	Harvest Gold Crabapple	50mm cal.	5M
D1	1	0	Malus 'Robinson'	Robinson Crabapple	50mm cal.	8M
D1	1	0	Malus 'Royal Raindrops'	Royal Raindrops Crabapple	50mm cal.	5M
D1	3	0	Malus 'Red Splendor'	Red Splendor Crabapple	50mm cal.	8M
D1	5	0	Malus 'Sutzyam'	Sugar Tyme Crabapple	50mm cal.	5M
D1	1	0	Malus 'Snowdrift'	Snowdrift Crabapple	50mm cal.	7M
D1	3	0	Ostrya virginiana	Hophornbeam Ironwood	50mm cal.	8M
D2	1	0	Prunus pensylvanica	Pin Cherry	50mm cal.	6M
D3	7	0	Quercus macrocarpa	Bur Oak	50mm cal.	20M
D3	5	0	Quercus rubra	Red Oak	50mm cal.	15M
D3	3	0	Tilia americana	Basswood	50mm cal.	13M
D1	3	0	Syringa reticulata	Japanese Tree Lilac	50mm cal.	6M
D1	3	0	Viburnum lentago	Nannyberry	50mm cal.	3M
TOTALS 90 0 D1 QTY 50, D2 QTY 7, D3 QTY 33						
E1	1	0	Abies balsamea	Balsam Fir	2.5m Ht.	
E1	1	0	Juniperus virginiana	Eastern Red Cedar	1.5m Ht.	
E2	1	0	Larix laricina	Eastern Larch / Tamarack	2.5m Ht.	
E1	1	0	Pinus cembra	Swiss Stone Pine	1.5m Ht.	
E1	1	0	Pinus flexilis	Limber Pine	1.5m Ht.	
E2	1	0	Picea glauca	White Spruce	2.5m Ht.	
TOTALS 6 0						

SEE PLAN FOR SOIL VOLUME ESTIMATES



Drawing Remains the Property of/Copyright Reserved by Gino J. Aiello Landscape Architect. Do Not Use or Reproduce Without Approval of Gino J. Aiello.

NOT To Be Used For Construction **Unless** Indicated by Revision: **"FOR LANDSCAPE CONSTRUCTION"**.

Contractor is Responsible for Verification of Site Locations of all Utilities. Report any Discrepancies Between Site and Drawing Immediately to Gino J. Aiello. Do Not Proceed Until Clarified.

TURF AREAS TO BE SOD C/W 150MM DEPTH TOPSOIL ON APPROVED SUBGRADE | SOD TO BE #1 GRADE TURFGRASS NURSERY SOD per NSGA - Fine Fescue/Kentucky Bluegrass Sod | PLANTING MIX TO BE APPROVED BY LANDSCAPE ARCHITECT | PLANT MATERIAL TO MEET CNLA STANDARDS/BE APPROVED BY LANDSCAPE ARCHITECT PRIOR TO PLANTING ALL MATERIALS & WORK TO BE MAINTAINED UNTIL FINAL ACCEPTANCE. (MOWING TURF, WEEDING BEDS, WATERING TURF & PLANTS) & INCLUDE 1 YEAR WARRANTY FROM DATE OF FINAL ACCEPTANCE | PROVIDE WATERING OF ALL PLANT MATERIAL AS REQUIRED FOR PROPER ESTABLISHMENT, UNTIL END OF WARRANTY PERIOD | REFER TO CIVIL ENGINEER'S DRAWING FOR ELEVATIONS / GRADING |

The Landscape Plan is to be read in conjunction with the grading, servicing, site and survey plan | Bare root material to be planted in season only | All plant material locations to be staked on site by the landscape contractor and checked by the landscape architect prior to planting | All trees to be preserved on or directly adjacent to the site will be protected | Plant material are to be installed a minimum of: 3.0m away from any part of any hydro transformer, 3.0m corridor between a fire hydrant and the curb, a 2.5m radius beside or behind a fire hydrant, 2.0m from any servicing/utility line or structure |

- LANDSCAPE LEGEND**
- Coniferous Tree
 - Deciduous Tree
 - 40 Year Outlook according to Dirr
 - Planting Bed
 - Shrub Planting Bed
 - Turf
 - Other Pedestrian Paving
 - Precast Paving
 - Retaining Wall
 - Parking Garage
- BELOW GRADE SERVICES REFER TO CIVIL/CUP**
- WTR U/G Water Service
 - STM U/G Storm Service
 - SAN U/G Sanitary Service
 - GAS U/G Gas Service
 - BC U/G TelCo Service
 - H U/G Hydro Service
 - OHW O/H Hydro Service
 - Fire Hydrant
 - FD Siamese Connection

REVISION OF LANDSCAPE

1e	REVISED PER CITY COMMENTS	2025 03 18
1d	REVISED PER CITY COMMENTS	2024 05 29
1c	PHASE 3 PRECONSULT	2024 02 29
1b	PHASE 3 PRECONSULT	2023 10 27
1a	PHASE 1 PRECONSULT	2023 08 28
0	REVIEW/COORDINATION	2023 08 15
#	Revision	Date

LÉPINE GJA INC.

GINO J. AIELLO | LANDSCAPE ARCHITECT

GJALA.COM | 613 286 5130 | GINO@GJALA.COM

115 DORRIDGE ROAD UNIT #1, OTTAWA, ONTARIO | K1T 2C2

RENES COURT FERNBANK APARTMENTS INC

5000 ROBERT GRANT AVENUE

Landscape Plan **LP1**

Scale: 1:300

CITY PLAN # 19239