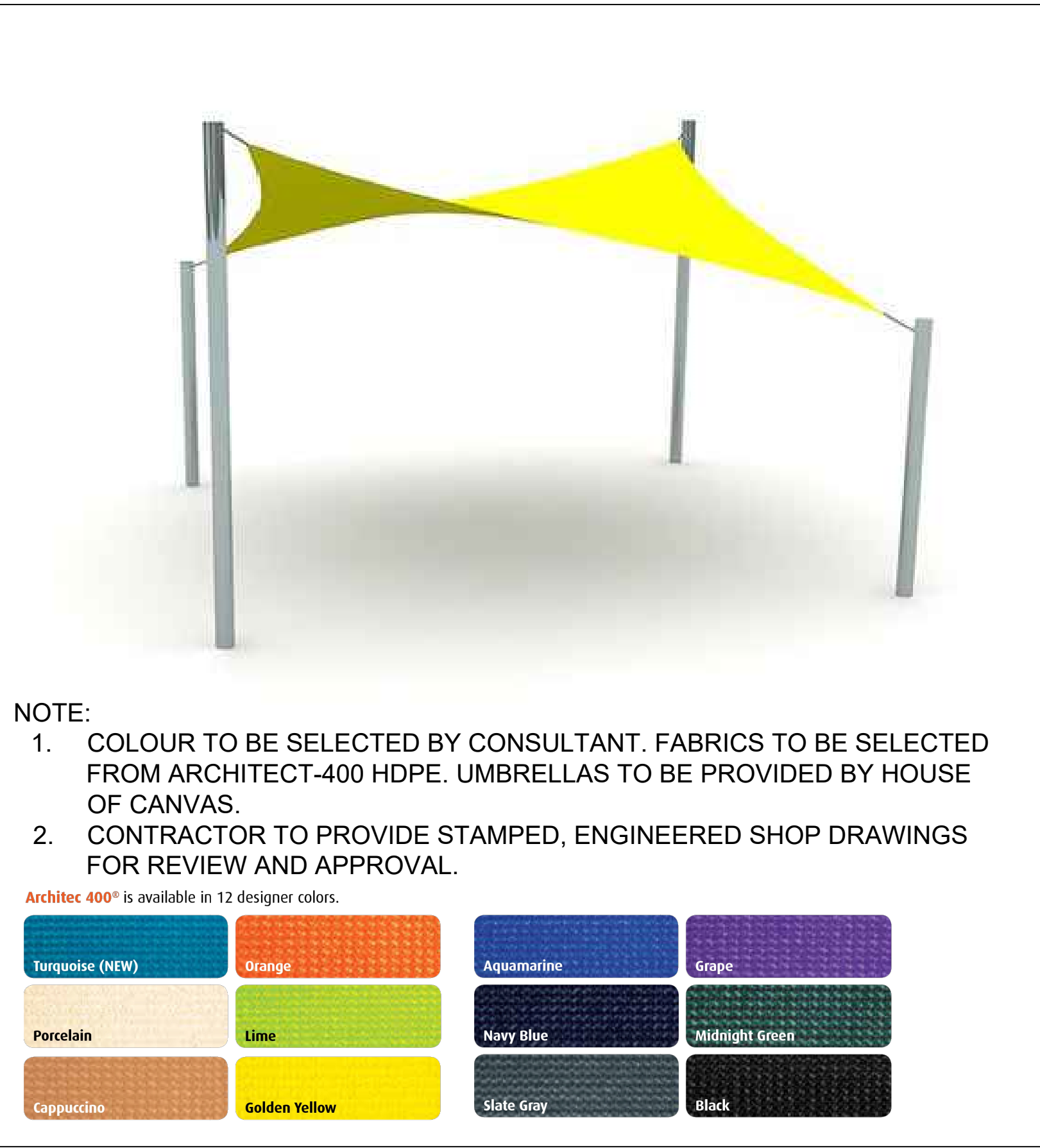
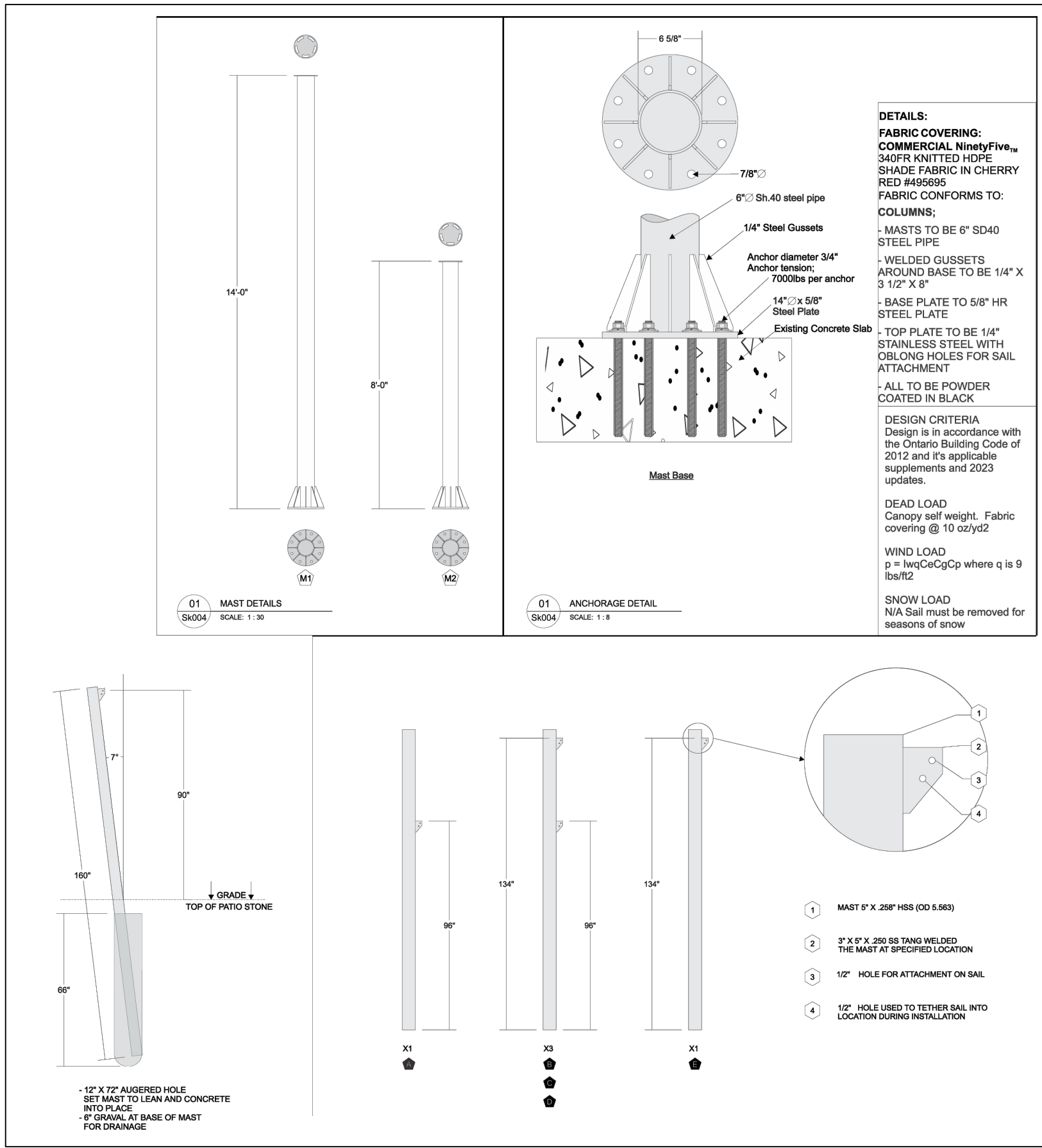




D1
L5004
TYPICAL TRIANGULAR SHADE SAIL
IMAGE
NOT TO SCALE



D2
L5004
TYPICAL RECTANGULAR SHADE SAIL
IMAGE
NOT TO SCALE



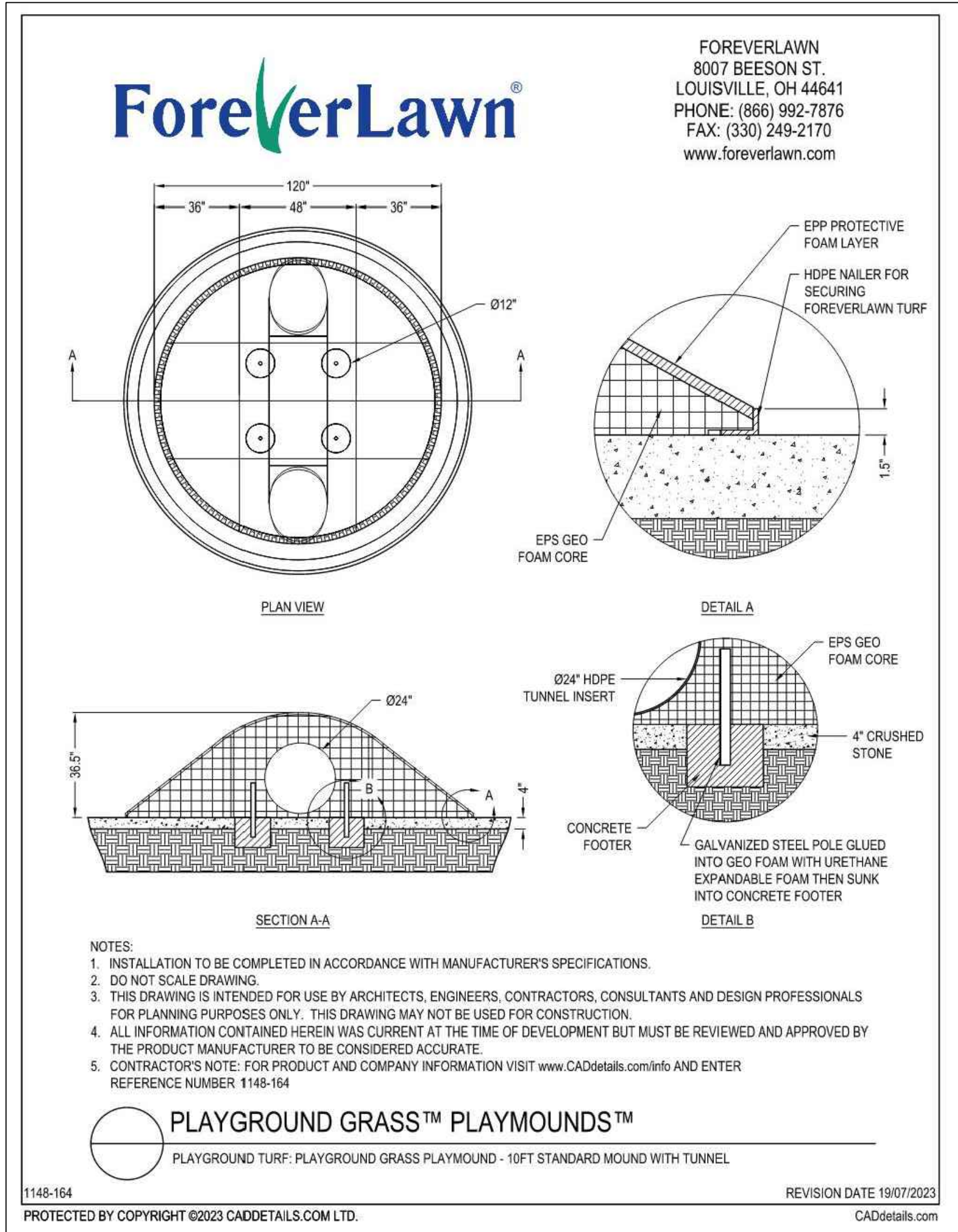
D3
L5004
ATTACHMENT AND POST DETAILS FOR RECTANGULAR SAILS
DETAIL
NOT TO SCALE



D4
L5004
TYPICAL CANTILEVER SINGLE POST UMBRELLA
IMAGE
NOT TO SCALE



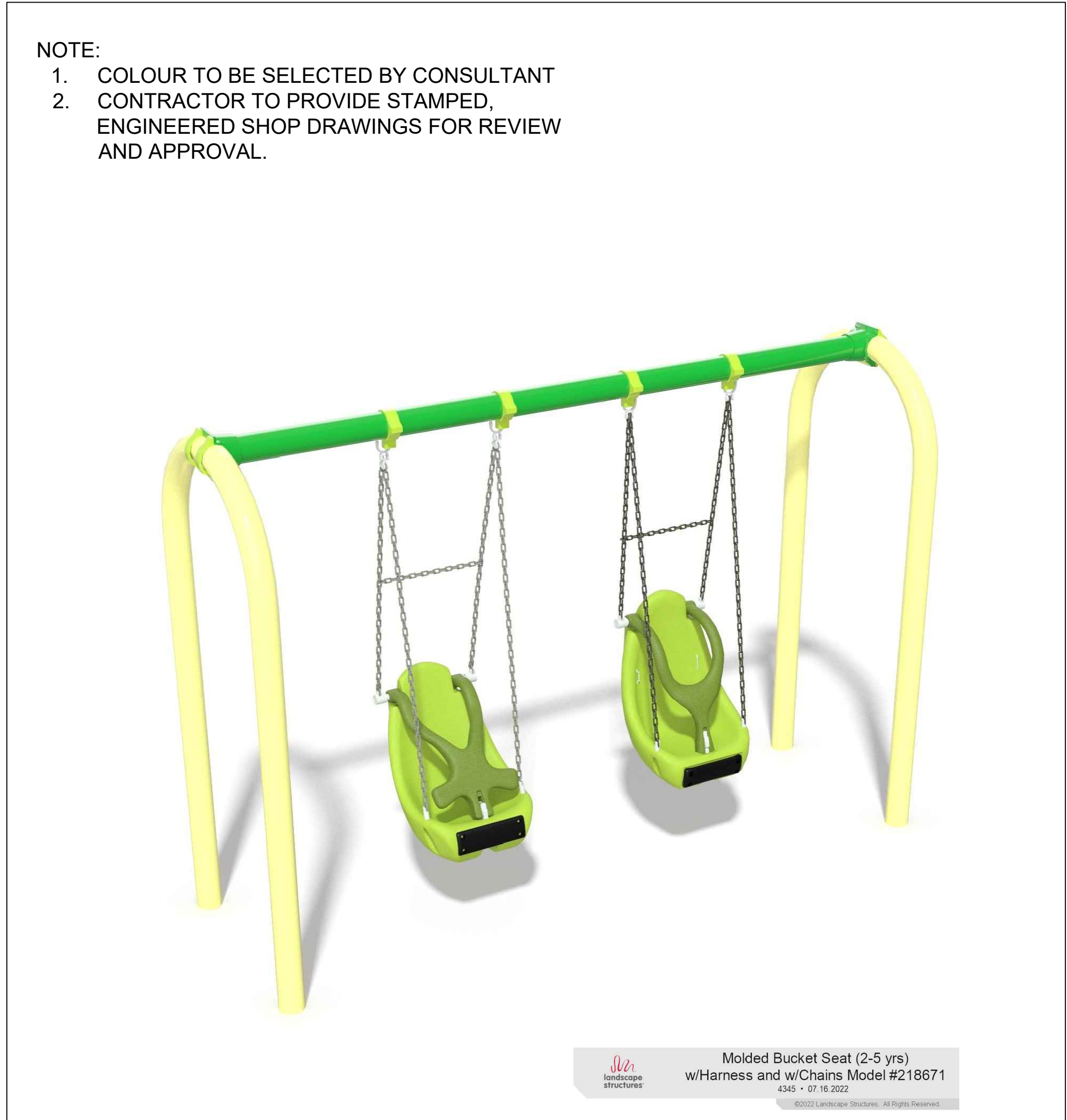
D5
L5004
TYPICAL OUTDOOR FAN
IMAGE
NOT TO SCALE



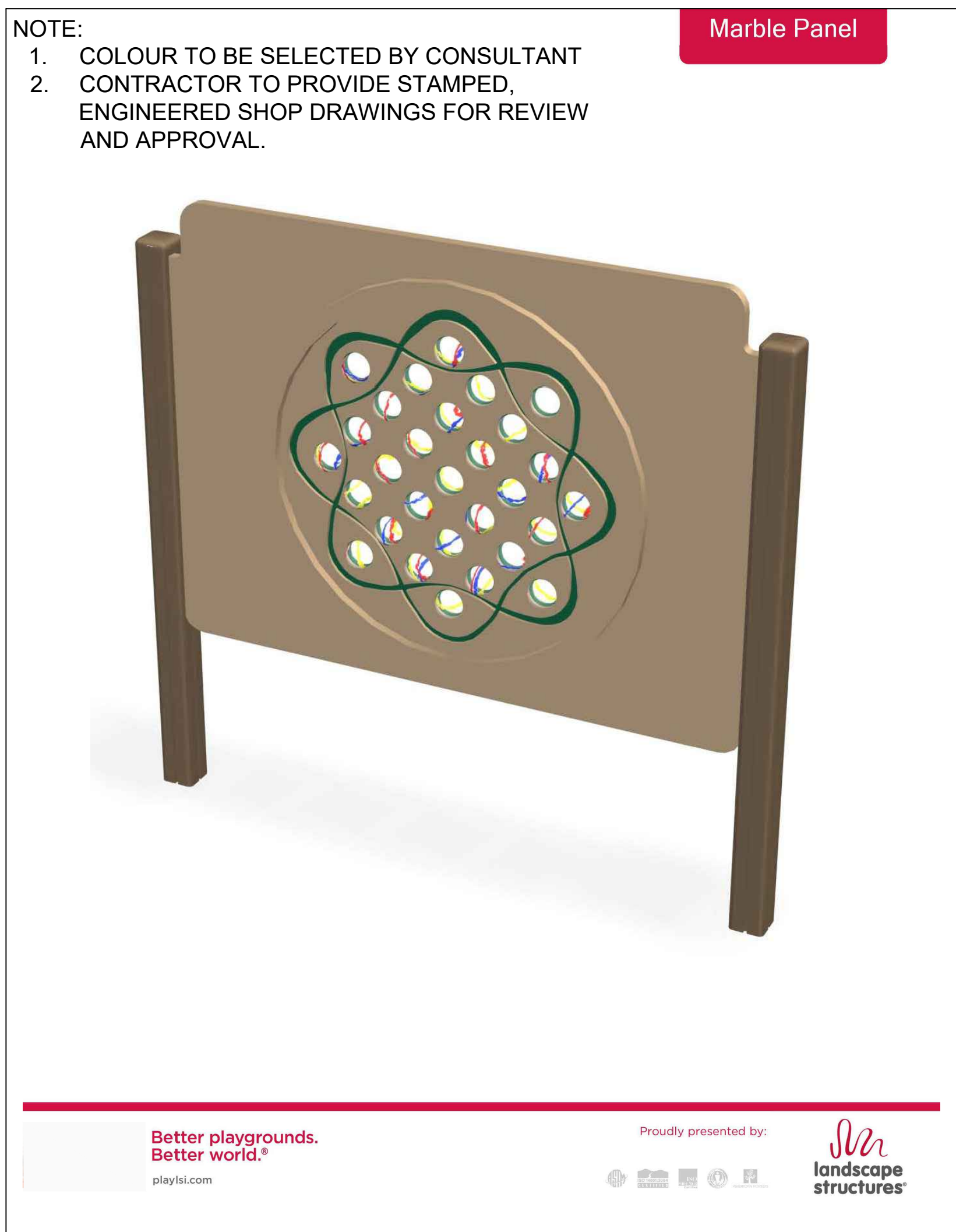
D6
L5004
TYPICAL PLAYGROUND WITH TUNNEL AT LEVEL 2 PRESCHOOL PLAYGROUND
MANUFACTURER'S CUTSHEET
NOT TO SCALE



D7
L5004
TYPICAL ACCESSIBLE SAND TABLE TYPE ONE AT PRESCHOOL PLAYGROUND
MANUFACTURER'S RENDERING
NOT TO SCALE



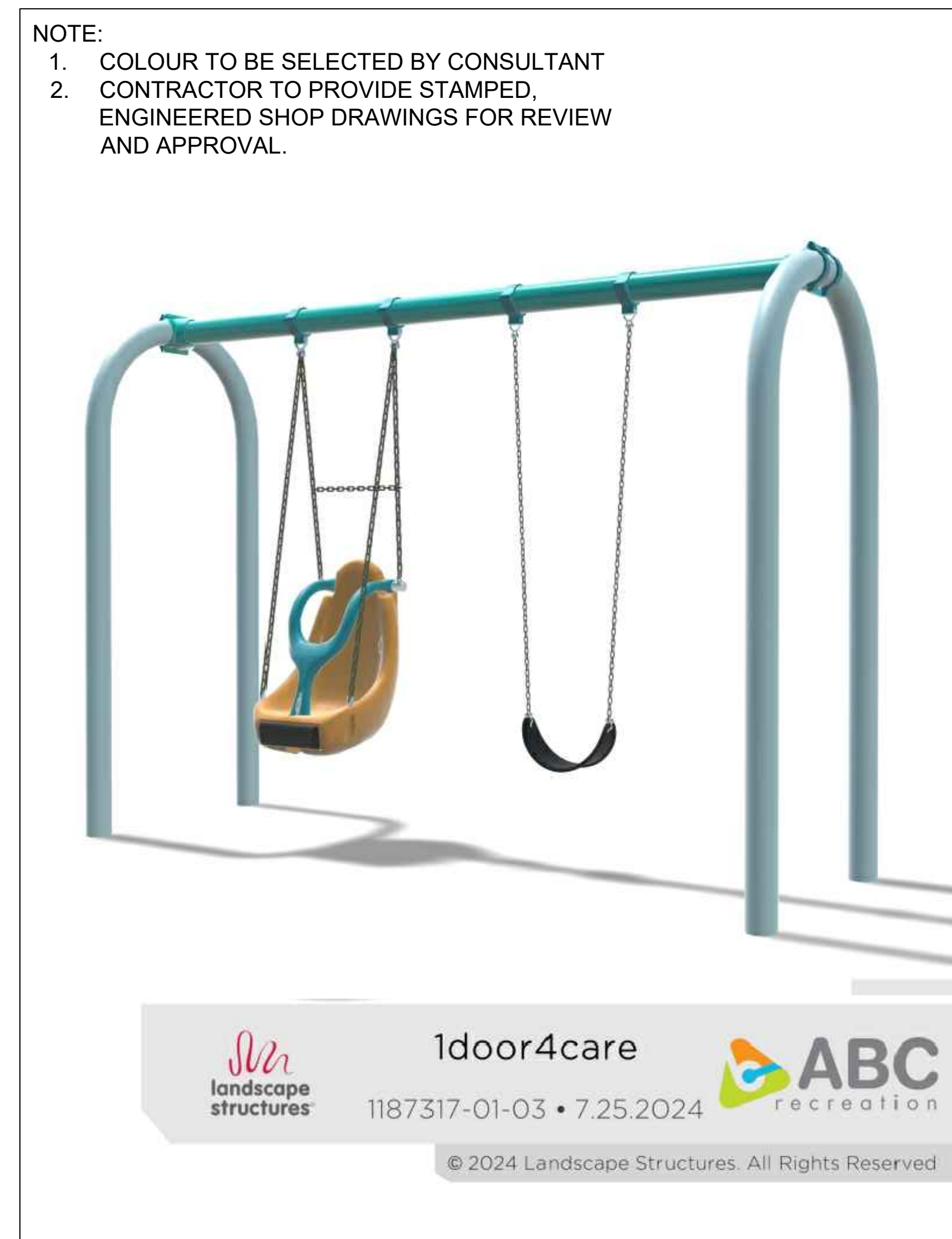
D9
L5004
TYPICAL SWING AT PRESCHOOL PLAYGROUND
MANUFACTURER'S RENDERING
NOT TO SCALE



D10
L5004
TYPICAL PLAY PANEL TYPE ONE AT PRESCHOOL PLAYGROUND
MANUFACTURER'S RENDERING
NOT TO SCALE



D11
L5004
TYPICAL PLAY PANEL TYPE TWO AT PRESCHOOL PLAYGROUND
MANUFACTURER'S RENDERING
NOT TO SCALE



D12
L5004
TYPICAL NON-ACCESSIBLE SWING AT LEVEL 2 SCHOOL PLAYGROUND
MANUFACTURER'S RENDERING
NOT TO SCALE



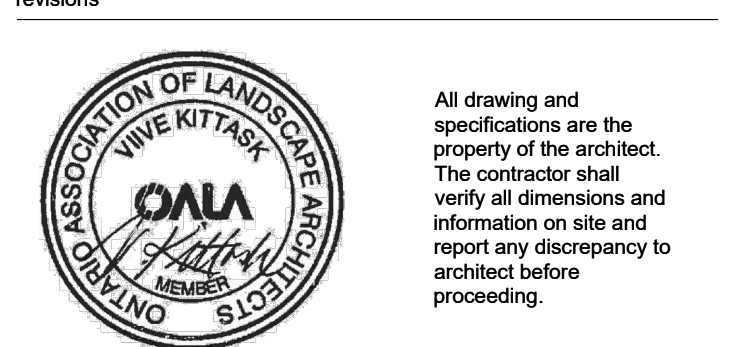
D13
L5004
TYPICAL FULLY ACCESSIBLE PLAY STRUCTURE AT SCHOOL PLAYGROUND
IMAGE
NOT TO SCALE

APPROVED
By Lily Xu at 1:32 pm, Apr 22, 2025

LILY XU, MCIP, RPP
MANAGER, DEVELOPMENT REVIEW SOUTH
PLANNING, DEVELOPMENT, AND BUILDING SERVICES
DEPARTMENT, CITY OF OTTAWA

9	2025-02-20	ISSUED FOR SITE PLAN CONTROL	IV
8	2024-12-09	RESUBMISSION R1	IV
7	2024-11-27	ISSUED FOR 100% CD	IV
6	2024-09-26	ISSUED FOR 50% CD RESUBMISSION	IV
5	2024-08-23	ISSUED FOR 100% CD	IV
4	2024-08-07	ISSUED FOR 50% CD SUBMISSION	IV
3	2024-04-19	ISSUED FOR 100% CD SUBMISSION	IV
2	2023-12-20	ISSUED FOR BUILDING PERMIT (TUNNEL)	IV
1	2023-12-15	ISSUED FOR 50% CD SUBMISSION	IV

date: revision: by:



CHEO Integrated Treatment Centre

401 Smyth Rd
Ottawa, ON K1H 8L1

LANDSCAPE DETAILS

scale: AS SHOWN
drawn by: IW/WW
reviewed by: VK
job number: 2307
plot date: 2025-02-20
drawing number:

L5004