

DEPARTMENTAL LEGEND

- 01 FRONT ENTRY, COMMUNITY AND FAMILY SUPPORT
- 02 CARE COORDINATION (INTAKE)
- 03 MEETING AND EDUCATION
- 04 DEVELOPMENT AND REHAB
- 05 DIAGNOSTIC AND MEDICAL
- 06 CAC, SEATING AND MOBILITY, TECH SERVICES
- 07 CHEO SCHOOL AND PRESCHOOL
- 08 BEHAVIOURAL SERVICES (AUTISM)
- 09 OUTPATIENT MENTAL HEALTH
- 10 CHILD AND YOUTH PROTECTION AND ADVOCACY
- 11 STAFF AND MEDICAL STAFF WORKPLACE
- 12 FACILITY SERVICES
- 20 PUBLIC CORRIDOR
- 30 STAIRS
- 31 PUBLIC ELEVATORS
- 32 SERVICE ELEVATORS
- 21 SERVICE CORRIDOR
- 40 MECHANICAL / ELECTRICAL / ICAT

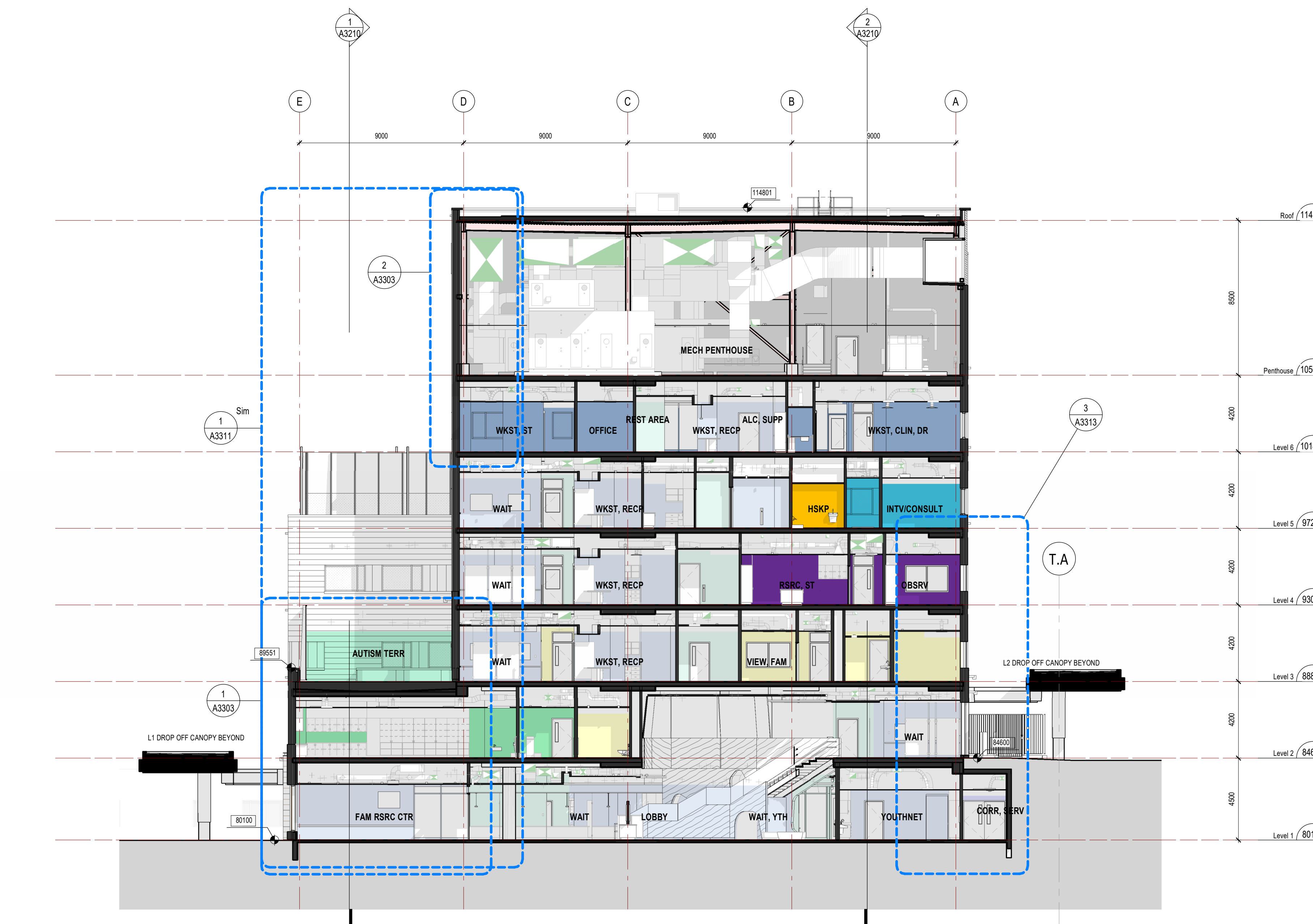
4 N-S SECTION THROUGH GAIT GYM
A3211 1:150



2 N-S SECTION THROUGH SERVICE CORE
A3211 1:150



3 S-N SECTION THROUGH GYM
A3211 1:150



1 S-N SECTION THROUGH LOBBY
A3211 1:150



9 20/04/21 ISSUED FOR SITE PLAN CONTROL RESUBMISSION
8 28/11/20 ISSUED FOR 100% CONSTRUCTION DOCUMENTS
7 24/06/20 ISSUED FOR BUILDING PERMIT
6 24/06/20 ISSUED FOR SITE PLAN CONTROL
5 24/06/20 ISSUED FOR 50% CONSTRUCTION DOCUMENTS
4 24/06/20 ISSUED FOR 50% CONSTRUCTION DOCUMENTS
3 24/06/20 ISSUED FOR FOUNDATION PERMIT
2 24/06/20 ISSUED FOR 100% DESIGN DEVELOPMENT
1 23/12/19 ISSUED FOR 50% CONSTRUCTION DOCUMENTS
0 23/12/19 ISSUED FOR 50% CONSTRUCTION DOCUMENTS

Date Revision

revisions

CHEO ASSOCIATES
ARCHITECTS

401 Smyth Rd
Ottawa, ON K1H 8L1

CHEO Integrated Treatment Centre

BUILDING SECTIONS

scale: As indicated

drawn by: MSA

reviewed by: JSL/D

job number: 22004

plot date: 23/02/20

drawing number: A3211

File Number: D07-12-24-0121

Plan Number: 19223