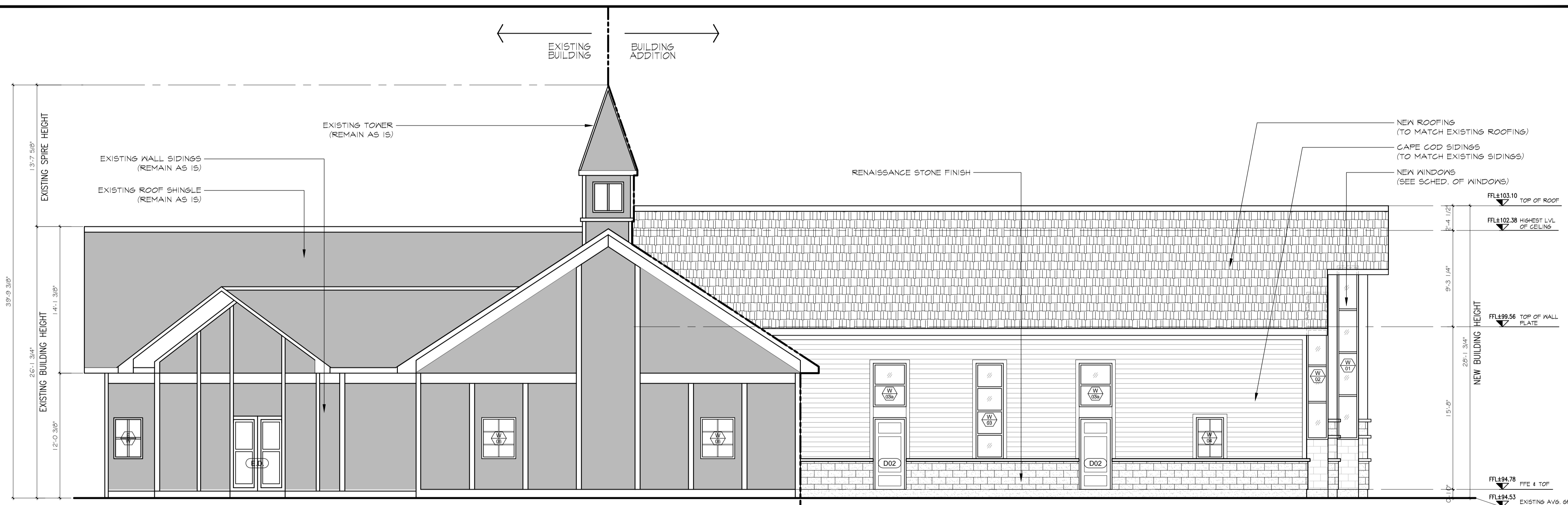



01 NORTH ELEVATION
A2.0 SCALE: 3/16" = 0'-0"



02 WEST ELEVATION
A2.0 SCALE: 3/16" = 0'-0"


LILY XU, MCIP, RPP
MANAGER, DEVELOPMENT REVIEW SOUTH
PLANNING, DEVELOPMENT, AND BUILDING SERVICES
DEPARTMENT, CITY OF OTTAWA

APPROVED
By Lily Xu at 3:21 pm, Apr 17, 2025



ANGELO MATTIA SPADOLA
ARCHITECT

200-1645 RUSSELL ROAD OTTAWA, ONTARIO K1G 4G5
T: 613.228.7190 F: 613.228.8690 ANGELOMSPADOLA@GMAIL.COM

1 PRESENTATION & APPROVAL	2022 04 01
2 ISSUED FOR CLIENTS APPROVAL	2022 04 05
3 ISSUED FOR CLIENTS APPROVAL	2022 04 12
4 ISSUED TO CIVIL ENGINEER	2022 04 27
5 ISSUED FOR CLIENTS APPROVAL	2022 04 29
6 ISSUED FOR CLIENTS FINAL APPROVAL	2022 05 06
7 APPROVED DESIGN DRAWINGS	2022 05 10
8 ISSUED FOR CONSULTANT CO-ORDINATION DRWG.	2022 06 03
9 ISSUED TO CONSTRUCTION MANAGER	2022 06 27
10 ISSUED FOR BUILDING PERMIT	2022 07 15
11 ISSUED FOR CITY COMMENTS	2022 08 25
12 ISSUED FOR CITY COMMENTS	2023 02 03
13 ISSUED FOR SITE PLAN APPROVAL	2023 03 08
14 ISSUED FOR SITE PLAN APPROVAL (PHASE 3 PRE-CONSULTATION)	2023 10 31
15 ISSUED FOR SITE PLAN APPROVAL (PHASE 3 FINAL SUBMISSION)	2023 12 06

GENERAL NOTES:

- THE CONTRACTOR SHALL CHECK AND VERIFY ALL DIMENSIONS AND REPORT ALL ERRORS AND OMISSIONS TO THE ARCHITECT FOR HIS WRITTEN PERMISSION BEFORE PROCEEDING WITH THE WORK. NOT FOR CONSTRUCTION UNLESS SIGNED BY THE ARCHITECT.
- NOT TO BE SCALED OR REPRODUCED WITHOUT WRITTEN PERMISSION.

CONSULTANTS:
STRUCTURAL ENGINEERS:
DALY ENGINEERING INC.
Structural Design & Engineering
G1-300 Lett Street, Ottawa Ontario, K1R 0R8
Telephone: 705-816-5554 Email: info@dalyengineering.ca

MECHANICAL & ELECTRICAL:
B.A. DESIGN LIMITED
1470 Lagan Way, Unit 2, Ottawa Ontario
K1V 3S6

CIVIL & GEOTECH. INVESTIGATION:
EXP SERVICES INC.
100 - 2650 Queensview Drive, Ottawa Ontario
K2B 8H6

PLANNING & LANDSCAPE ARCHITECTURE:
FOTENN PLANNING + DESIGN
386 Cooper Street, Suite 300, Ottawa Ontario
K2P 2H7

HAVEN BAPTIST CHURCH
4000 Strandherd Drive ,
Nepean , Ontario K2J 4R8

**NORTH ELEVATION
WEST ELEVATION**

DATE: April 2022

SCALE: 3/16"=1'-0"

PROJ. #: AMS/BC-22/06

DRAWN BY: EF. / VR.

CHECKED BY: AMS

SHEET NUMBER:
A2.0

REV. NO. 05
DATE : 2022.05.10

