

TOPOGRAPHICAL PLAN OF SURVEY OF

PART OF BLOCK 3
REGISTERED PLAN 50M-136
CITY OF OTTAWA

Surveyed by Annis, O'Sullivan, Vollebekk Ltd.



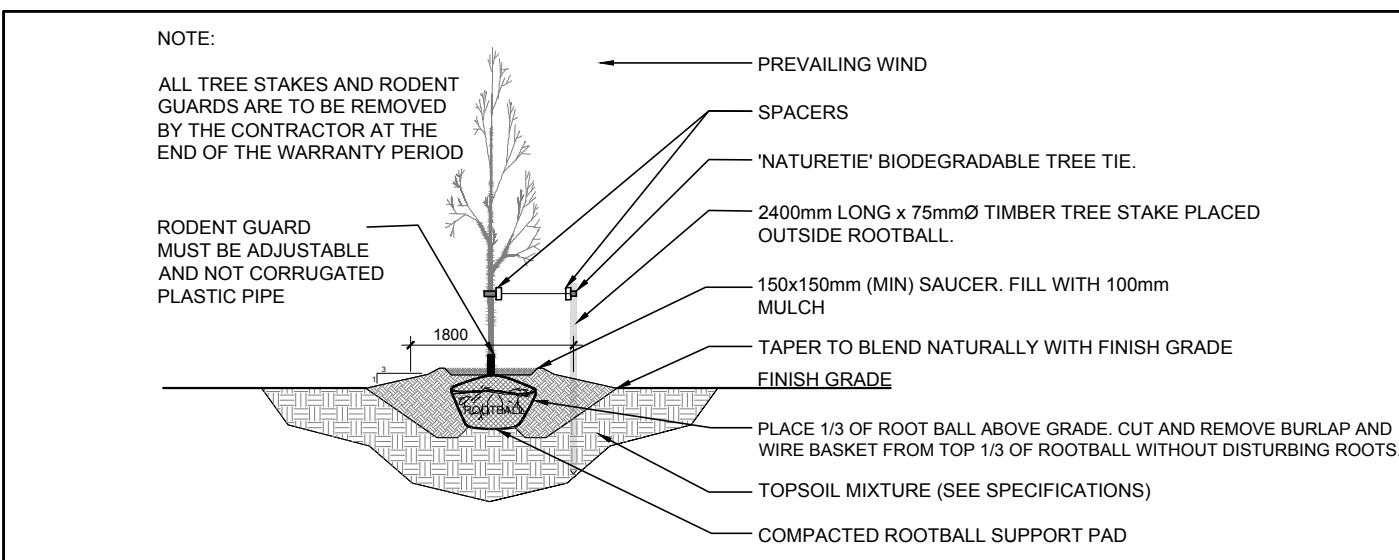
GENERAL NOTES:

- IT IS THE RESPONSIBILITY OF THE APPROPRIATE CONTRACTOR OR OFFICIAL TO REPORT ANY ERRORS, OMISSIONS OR DISCREPANCIES ON THIS PLAN WITH ACTUAL SITE CONDITIONS TO THE LANDSCAPE ARCHITECT BEFORE PROCEEDING WITH CONSTRUCTION.
- THE CONTRACTOR IS TO NOTIFY ALL UTILITY COMPANIES AND AUTHORITIES PRIOR TO ANY EXCAVATION AND ASCERTAIN LOCATIONS OF UNDERGROUND SERVICES.
- THE CONTRACTOR IS TO REINSTATE ALL AREAS AND ITEMS DAMAGED AS A RESULT OF CONSTRUCTION ACTIVITY.
- THE CONTRACTOR IS TO COMPLY WITH ALL PERTINENT CODES AND BY-LAWS.
- THE CONTRACTOR IS TO MAINTAIN A POSITIVE SURFACE RUN-OFF THROUGHOUT THE ENTIRE CONSTRUCTION PERIOD.
- THE LANDSCAPE ARCHITECT IS NOT RESPONSIBLE FOR SUBSURFACE CONDITIONS.
- THE CONTRACTOR IS TO STAKE THE PROPOSED LOCATION OF ALL PLANT MATERIAL IN CONJUNCTION WITH THE LANDSCAPE ARCHITECT PRIOR TO EXCAVATION.
- MINIMUM DISTANCES FOR SELECTED DECIDUOUS TREES ARE AS FOLLOWS:
 - BUILDING FOUNDATIONS - 7.5M
 - SIDEWALKS - 1.5M
 - PUBLIC STREETS - 2.5M
 - UNDERGROUND INFRASTRUCTURE - 2.0M
- ALL TREES WITHIN 1M OF UNDERGROUND UTILITY TRENCHES ARE TO BE EXCAVATED BY HAND.
- REMOVE ALL PROTECTIVE WRAPPING FROM TREE TRUNKS AFTER INSTALLATION.
- STAKING OF TREES SHALL ONLY BE PERFORMED IF NECESSARY.
- ENSURE THAT MULCH IS PULLED BACK A MINIMUM DISTANCE OF 75MM FROM BASE OF TREE TRUNK.

PROPOSED PLANT LIST

KEY	QTY.	BOTANICAL NAME	COMMON NAME	SIZE	CONDITION	REMARKS	NATIVE SPECIES
TREES							
PT	1	Populus tremuloides	Trembling Aspen	50mm cal.	B&B		YES
RM	2	Acer rubrum	Red Maple	50mm cal.	B&B		YES
SB	2	Amelanchier canadensis	Shadblow Serviceberry	50mm cal.	B&B		YES
SF	1	Amelanchier laevis 'JFS-ARB'	Spring Flurry Serviceberry	50mm cal.	B&B		YES
WB	2	Betula papyrifera	White Birch	50mm cal.	B&B		YES

NOTE: All 8 TREES ARE PROPOSED ON PRIVATE PROPERTY



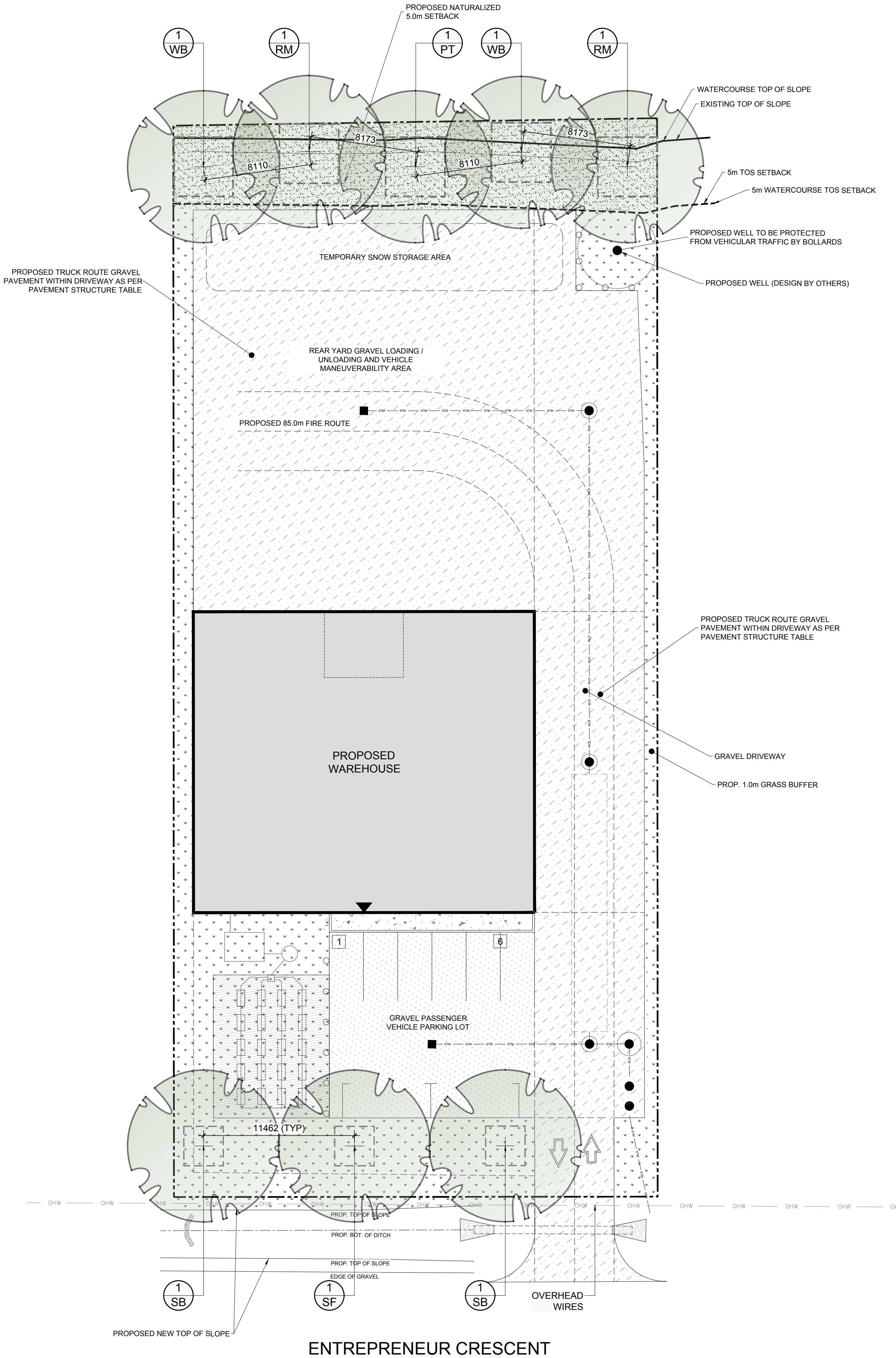
2 DECIDUOUS TREE PLANTING
L.1 SCALE: NTS

40 YEAR CANOPY CALCULATION:

-3002m2 site area
-5 Large deciduous trees proposed (154m2 ea.) and 3 small deciduous trees proposed (7m2 ea.)
=791m2 canopy cover =26.3% canopy cover
*Large deciduous tree calculated at 14m spread, small tree calculated at 3m spread

NOTE RE: EXISTING TREES

PER SECTION 5.2 OF THE ENVIRONMENTAL IMPACT STATEMENT PREPARED BY KILGOUR & ASSOCIATES LTD. 2023-09-15 THE SITE IS "COMPLETELY DEVOID OF ANY VEGETATION"



CLIENT

DUSTIN WILSON

CONSULTANTS

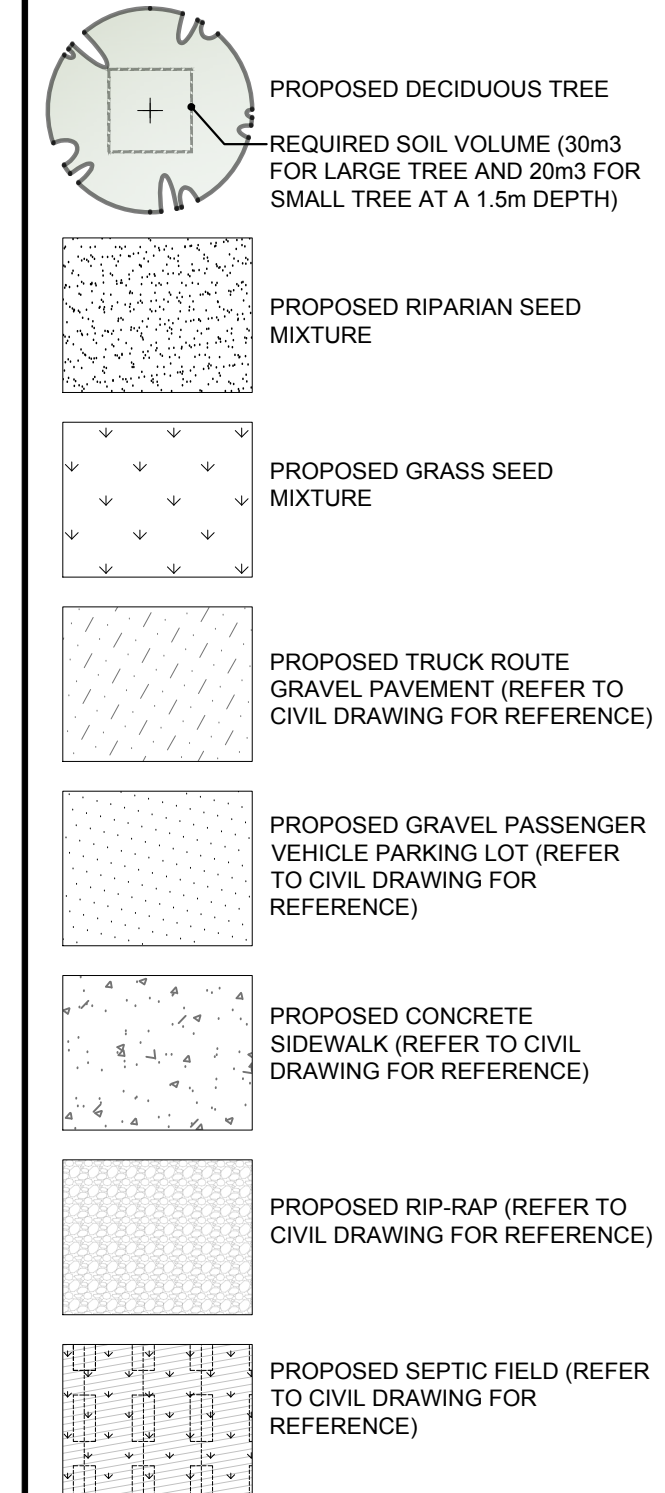
CIVIL ENGINEERS:



ENGINEERING | INGÉNIERIE

5430 Carolek Road | Ottawa, ON, K1J 9G2
www.lri.ca | (613) 842-3434

LEGEND

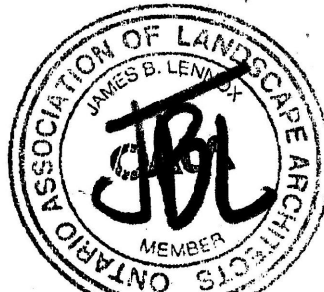


3	REVISED PER CITY COMMENTS	01/21/2025	ML JL
2	ISSUED FOR DISCUSSION AND REVIEW	12/06/2024	ML JL
1	ISSUED FOR DISCUSSION AND REVIEW	07/31/2024	ML JL
No.	Issue	Date	DR CK

JAMES B. LENNOX & ASSOCIATES INC.
LANDSCAPE ARCHITECTS
3332 CARLING AVE. OTTAWA, ONTARIO K2H 5A8
Tel. (613) 722-5168 Fax. (866) 343-3942

PROJECT
PROPOSED WAREHOUSE DEVELOPMENT
363 ENTREPRENEUR CRESCENT, OTTAWA ON

DRAWING
LANDSCAPE PLAN

STAMP	SCALE
	AS SHOWN
	START DATE
	JULY 2024
	PROJECT NO.

PROJECT NORTH 	DRAWING NO. L.1 PLOT SIZE ARCH-D
-------------------	---