

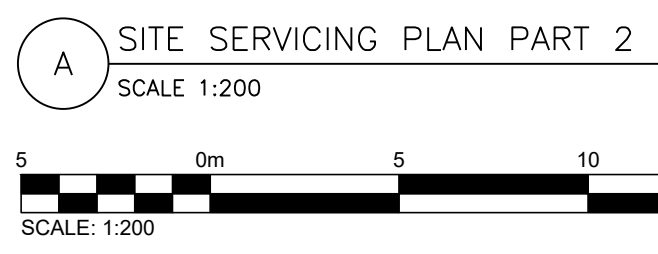


GENERAL NOTES:

- SURVEY INFORMATION PROVIDED BY J.D BARNES DATED 2023-06-12. GRID BEARINGS ARE UTM GRID, DERIVED FROM REAL TIME NETWORK (RTN) OBSERVATIONS. VIN LONE 18. NAD83 (CSRS) (2010.0). DISTANCES ARE GROUND AND CAN BE CONVERTED TO GRID BY MULTIPLYING BY THE COMBINED SCALE FACTOR OF 0.999910. FOR BEARING COMPARISONS, A ROTATION OF 1°04'07" CLOCKWISE WAS APPLIED TO BEARINGS ON PLAN P1, P2 AND P3 TO ROTATE TO NAD83 UTM 18.
- GENERAL CONTRACTOR IS RESPONSIBLE FOR ALL LOCATES PRIOR TO COMMENCEMENT OF CONSTRUCTION/DEMOLITION. ALL WORK TO BE DONE BY THE GENERAL CONTRACTOR UNLESS NOTED OTHERWISE - WITHIN PROPERTY/LEASE LINES.
- GEOTECHNICAL INVESTIGATION PROPOSED CHICK-FIL-A RESTAURANT #30042 BY BLUE FROG DATED AUGUST 22, 2024.

LEGEND:

- EX. LIGHT POLE
- EX. YARD LIGHT
- EX. JUNCTION BOX
- PROP. BACKFLOW PREVENTER
- PROP. WATER METER
- EX. WATER METER
- EX. HYDRO POLE
- EX. GUY WIRE AND ANCHOR
- EX. TRAFFIC SIGNAL
- EX. GAS VALVE
- EX. SIGN
- EX. MONITORING WELL
- EX. IRON PIN
- EX. FOUND LEAD PIN
- FOUND IRON BAR
- EX. FIRE HYDRANT
- EX. STORM MH
- EX. SANITARY MH
- NEW SANITARY MH
- EX. STORM CB
- NEW STORM CB
- NEW STORM CBMH
- EX. WATER VALVE
- EX. HYDRO POLE
- EX. GUY WIRE AND ANCHOR
- DOOR
- PROPERTY LINE
- EX. FENCE LINE
- EX. CONC. CURB
- NEW CONC. CURB
- CONC. CURB REMOVAL
- NEW CURB CUT
- PROPOSED SWALE
- PROPOSED SUBDRAIN
- MATCH TO EXISTING
- MAX 3:1 SLOPING
- SCOPE OF WORK BOUNDARY
- EX. NAT. GAS LINE
- EX. WATER LINE
- EX. SANITARY LINE
- EX. STORM LINE
- EX. BURIED PHONE LINE
- EX. BURIED HYDRO LINE
- NEW WATER LINE
- NEW SANITARY LINE
- NEW STORM LINE
- NEW NAT. GAS LINE
- NEW BURIED HYDRO LINE
- EX. STORM LINE REMOVAL
- VENT PIPING
- PROP. WATER VALVE
- PIPE INSULATION



Issued for SPA



Chick-fil-A
5200 Buffington Road
Atlanta, Georgia 30349-2998

exp Services Inc.
T: +1.905.793.8800 F: +1.905.793.0641
1595 Clark Boulevard
Brampton, ON L6T 4V1
Canada
www.exp.com



- BUILDINGS • EARTH & ENVIRONMENT • ENERGY •
- INDUSTRIAL • INFRASTRUCTURE • SUSTAINABILITY



CHICK-FIL-A
ORLEANS
4280 Innes Road
Ottawa, ON

FSR#30042

BUILDING TYPE / SIZE: IP01 SE
RELEASE: XXXXXXXXX

REVISION SCHEDULE		
NO.	DATE	DESCRIPTION
A	2024-10-04	FOR SPA
B	2025-01-23	FOR SPA
C	2025-04-15	FOR SPA

CONSULTANT PROJECT # BRM0023002042-H0
PROJECT STATUS SPA
DATE OCTOBER 2024
DRAWN BY K.J.

Information contained on this drawing and in all digital files produced for above named project may not be reproduced in any manner without express written or verbal consent from authorized project representatives.

SHEET
SITE SERVICING PLAN
PART 2

SHEET NUMBER

PS101