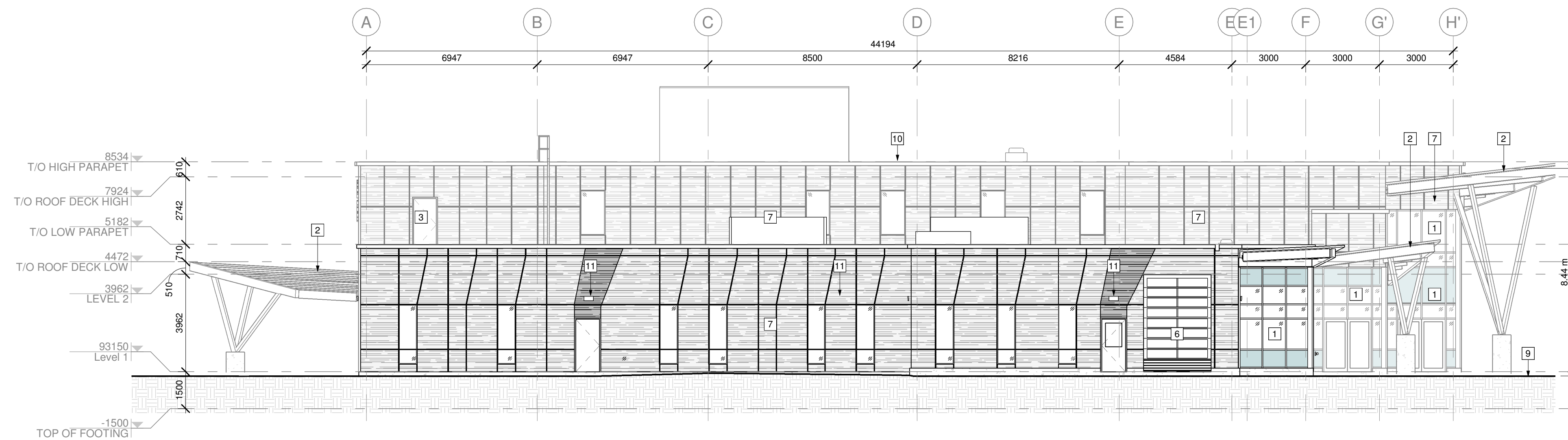
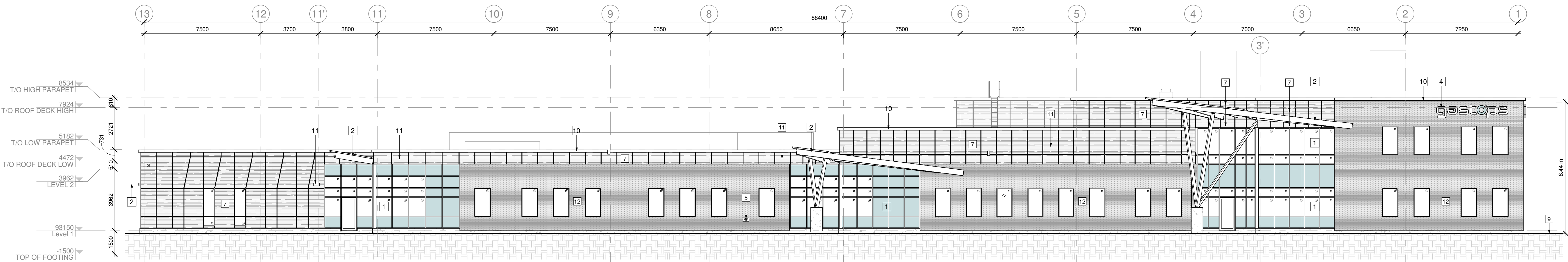


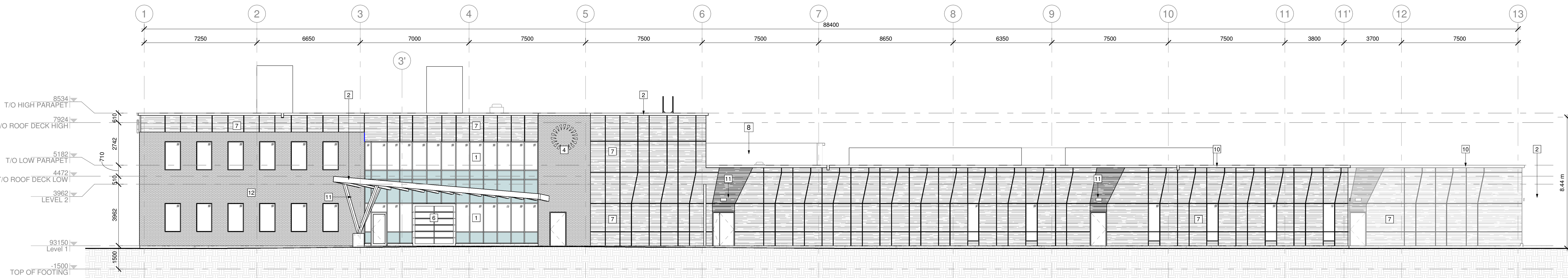
2 SOUTH Copy 1
A300 1:125



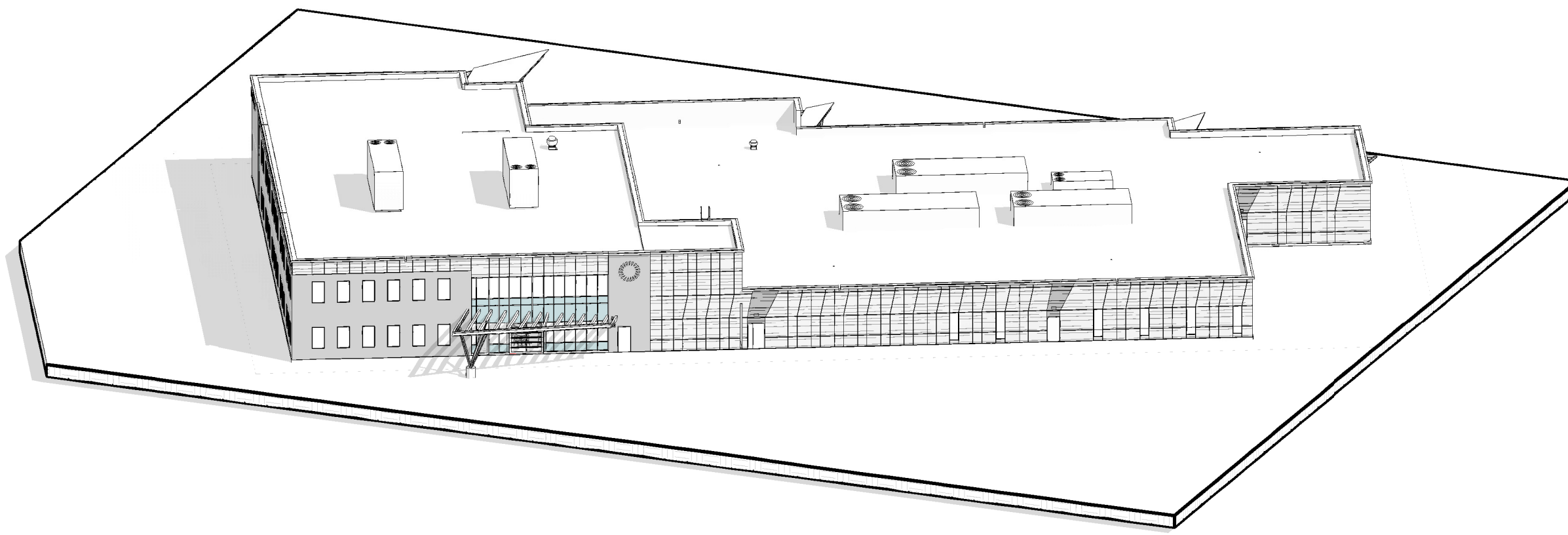
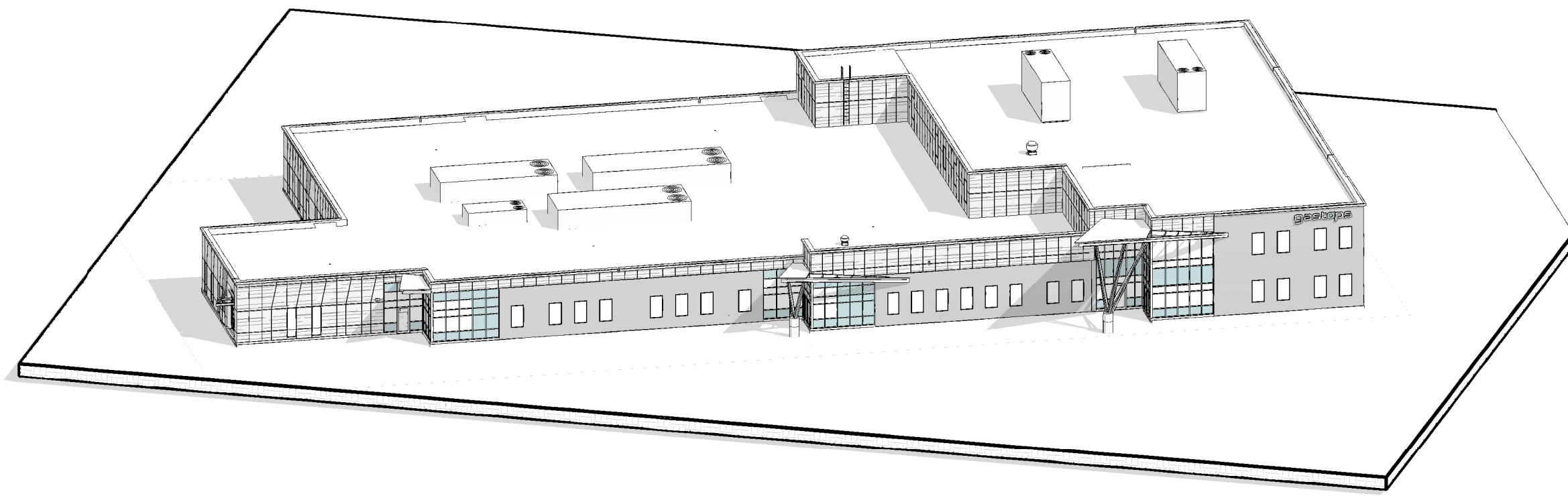
5 NORTH Copy 1
A300 1:125



1 WEST Copy 1
A300 1:125



3 EAST Copy 1
A300 1:125



ELEVATION NOTES:

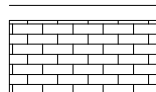




- CONTRACTOR TO COORDINATE WITH MANUFACTURER'S SPECIFICATIONS AND INSTALLATIONS GUIDELINES FOR ALL MATERIAL SEALING, TRANSITIONS, SEPARATIONS, FLASHING DETAILS, CONNECTIONS, ANCHORAGES, ETC. CONTRACTOR TO PROVIDE DETAIL DRAWINGS OR MOCK-UP FOR ARCHITECT'S REVIEW AND APPROVAL, FOR ALL SPECIAL CONDITIONS NOT SHOWN IN THE CONTRACT DOCUMENTS.

ELEVATION KEYNOTES:

- CURTAIN WALL
- CANOPY
- RTU
- SIGNAGE
- SIAMESE CONNECTION
- OVERHEAD GARAGE DOOR
- METAL SIDING
- BACKSIDE OF DECORATIVE PARAPET
- FINISH GRADE
- PREFINISHED METAL FLASHING
- WALL MOUNTED SCONCE
- BRICK VENEER MASONRY

ELEVATION LEGEND:

HATCH PATTERNS SHOWN ARE FOR GRAPHIC PURPOSES ONLY AND SHOULD BE COORDINATED WITH ACTUAL SPECIFIED MATERIALS.

HATCH	SYMBOL	DESCRIPTION
		BRICK VENEER MANUFACTURER: TBD COLOUR: BLACK
		METAL SIDING MANUFACTURER: TBD COLOUR: WHITE
		METAL SIDING MANUFACTURER: TBD COLOUR: CHARCOL
		SPANDREL PANEL MANUFACTURER: TBD COLOUR: TBD
		GLAZING

CSV ARCHITECTS

sustainable design · conception écologique

413.564.8118 190 O'Connor Street, Suite 100
www.csv.ca Ottawa, Ontario K2P 2R3

STRUCTURAL ENGINEER
CLELAND JARDINE
580 Terry Fox Drive
Kanata, Ontario K0L 4B9

MECHANICAL ENGINEER
QUASAR CONSULTING
GROUP
150 Isabella Street, Suite 400
Ottawa, Ontario K1S 5H3

ELECTRICAL ENGINEER
QUASAR CONSULTING
GROUP
150 Isabella Street, Suite 400
Ottawa, Ontario K1S 5H3

CIVIL ENGINEER
EGIS GROUP
115 Walgreen Road
R.R. 3 Corp, Ontario K0A 1L0

LANDSCAPE ARCHITECT
URBAN TYPOLOGY INC
163 Sterling Road Unit 10
Toronto, Ontario M8R 2B2

STAMP

11 2025-04-14 ISSUED FOR SPC RESUBMIT 3

10 2025-02-24 ISSUED FOR SPC RESUBMIT 2

9 2024-12-16 ISSUED FOR SPC

3 2024-11-01 ISSUED FOR SPC REVIEW

2 2024-07-30 ISSUED FOR CLIENT COORDINATION

REV DATE ISSUE

NOTES

1. OWNERSHIP OF THE COPYRIGHT OF THE DESIGN AND THE WORKS EXECUTED FROM THE DESIGN REMAINS WITH CSV ARCHITECTS, AND MAY NOT BE REPRODUCED IN ANY FORM WITHOUT THE WRITTEN CONSENT OF CSV ARCHITECTS.

2. THE DRAWINGS, PRESENTATIONS AND SPECIFICATIONS AS INSTRUMENTS OF SERVICE ARE AND SHALL REMAIN THE PROPERTY OF CSV ARCHITECTS. THEY ARE NOT TO BE USED BY THE CLIENT ON OTHER PROJECTS OR ON EXTENSIONS TO THIS PROJECT WITHOUT THE WRITTEN CONSENT OF CSV ARCHITECTS.

3. THIS DRAWING IS TO BE READ IN CONJUNCTION WITH ALL OTHER PROJECT DRAWINGS AND SPECIFICATIONS.

4. DO NOT SCALE DRAWINGS. CONTRACTOR SHALL BE RESPONSIBLE TO VERIFY DIMENSIONS ON SITE.

5. ALL WORK SHALL BE IN ACCORDANCE WITH THE ONTARIO BUILDING CODE AND ALL SUPPLEMENTS AND APPLICABLE MUNICIPAL REGULATIONS.

CLIENT

GASTOPS

OTTAWA
ONTARIO, CANADA

PROJECT

GASTOPS NEW
FACILITY

3700 Twin Falls Place

TITLE

ELEVATIONS

PROJECT NO: 2023-2260

DRAWN: RR

APPROVED: PM

SCALE: As indicated

DATE PRINTED: 4/14/2025 2:22:49 PM

REV DRAWING NO:

11 A300

#19226