

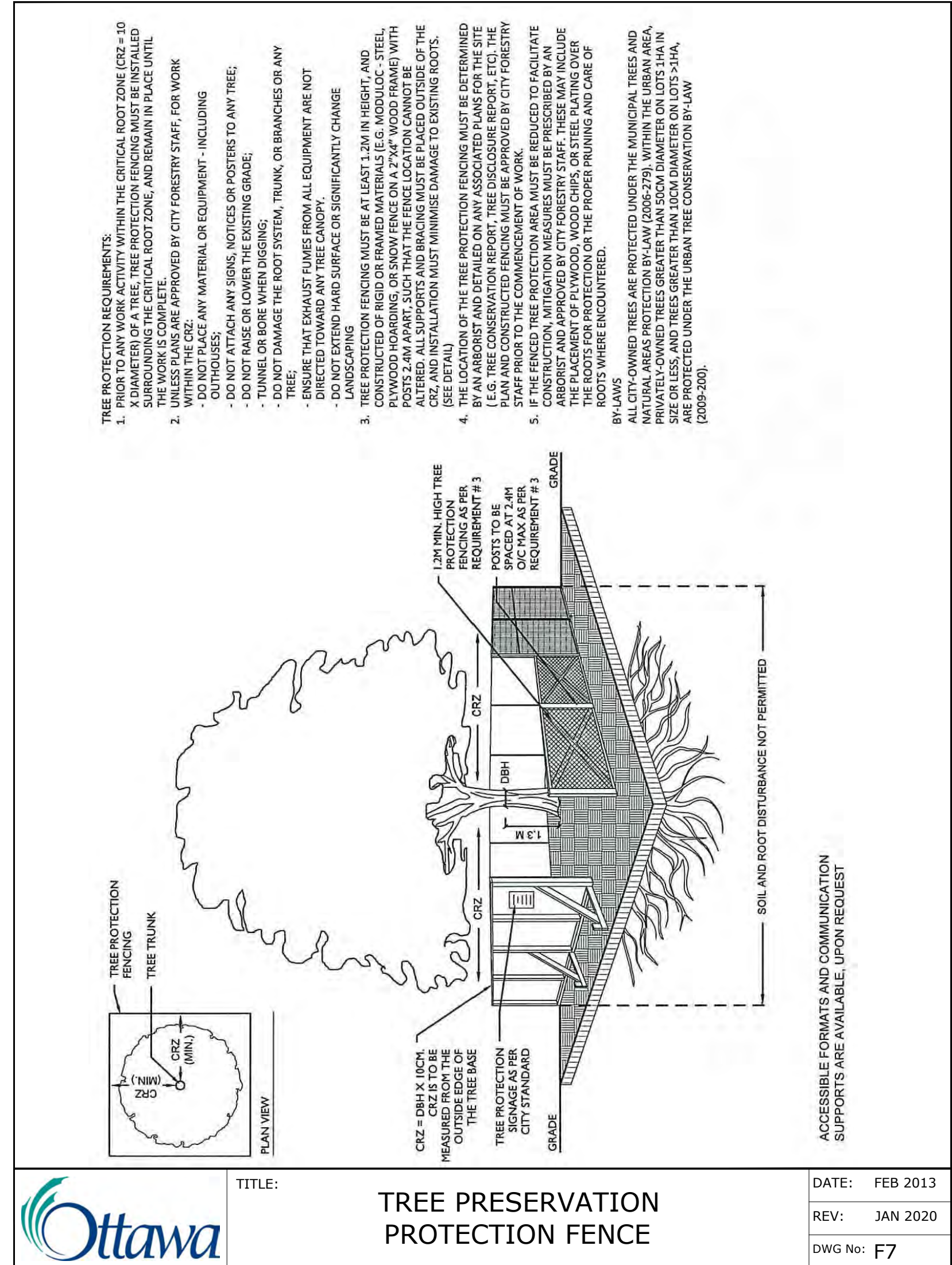
2 EXISTING LANDSCAPE PLAN
Scale: 1:400

PROPERTY INFORMATION
PART OF LOT 4, CONCESSION 1, HUNTLEY, BEING PARTS 1 AND 2 ON PLAN 4R-28323 SUBJECT TO AN EASEMENT IN GROSS OVER PART 12, 4R29646 AS IN OC1808653 SUBJECT TO AN EASEMENT IN GROSS OVER PART 1, 4R29686 AS IN OC1816865 CITY OF OTTAWA

PROPERTY IDENTIFICATION NUMBER (PIN):
045080122

LEGEND

- SOD
- CONCRETE PAVEMENT / WALKWAY
- PEASTONE
- SEED
- PAVERS
- PATIO & PLANTS TO BE REMOVED, SALVAGED, OR TRANSPLANTED
- CHAIN LINK FENCE
- PERENNIALS
- TREES
- SHRUB BEDS
- STREET TREES
- EXISTING VEGETATION ISSUES



Tree Preservation Protection Fence
DATE: FEB 2013
REV: JAN 2020
DWG No: F7

Existing Trees							
Origin	ID	Qty	Botanical Name	Common Name	Size (cm DBH)	Location	Condition
EXISTING TREES - GOOD CONDITION							
Non N	Ag	57	Acer ginnala	Amur Maple, tree form	8		Good
Niv H	Ar'AS'	2	Acer rubrum 'Autumn Spire'	Red Maple	9		Good
Niv	As	1	Acer saccharum	Sugar Maple	9		Good
Niv H	AcB	6	Amelanchier canadensis 'Ballerina'	Ballerina Serviceberry	8		Good
Non N	BnR	3	Betula nigra 'Riversii'	River Birch	7		Good
Niv	Co	9	Celtis occidentalis	Common Hackberry	9		Good
Niv H	GiS	3	Gleditsia triacanthos inermis 'Shademaster'	Shademaster Honey Locust	9		Good
Non N	MM	4	Malus x Makamik	Makamik Crabapple	8		Good
Niv	Ov	3	Ostrya virginiana	Ironwood	8		Good
Non N	Pp	18	Picea pungens	Colorado Spruce	9		Good
Niv	Qr	3	Quercus rubra	Red Oak	9		Good
EXISTING TREES - POOR CONDITION							
Niv H	AcB	1	Amelanchier canadensis 'Ballerina'	Ballerina Serviceberry	8	Near east side property, south of east patio	Poor
Niv	As	1	Acer saccharum	Sugar Maple	9	Near west property line, west of west patio	Scarred trunk
Non N	MM	1	Malus x Makamik	Makamik Crabapple	7	At north property line, centre of property	Very poor, sprouting from roots
Non N	MM	1	Malus x Makamik	Makamik Crabapple	8	At north property line, centre of property	Fair to poor condition
Niv	Qr	1	Quercus rubra	Red Oak	9	Near north property line, west of north parking	Trunk scarred at base
EXISTING TREES TO REMOVE							
Niv H	AcB	1	Amelanchier canadensis 'Ballerina'	Ballerina Serviceberry	8	West of main entrance	from roots only. In conflict with
Non N	MM	1	Malus x Makamik	Makamik Crabapple	7	West of west patio	Very poor condition
INVASIVE	PcC	1	Pyrus calleryana 'Chanticleer'	Chanticleer Pear	9	North of east gazebo	Fair - invasive species
Niv	tCo	1	Celtis occidentalis	Common Hackberry	9	South-west corner of parking near south property line	Good, in conflict with proposed snow storage
Non N	tPp	1	Picea pungens	Colorado Spruce	9	West of main entrance at south property line	Good, in conflict with existing utilities

GENERAL NOTES

- All general site information and conditions compiled from existing plans, surveys and consultant's field notes. Report all discrepancies prior to any work. No responsibility is born by the Consultant for unknown subsurface conditions.
- The location of the utilities is approximate only, and the exact location should be determined by consulting the municipal authorities and utility companies concerned. The Contractor shall prove the location of utilities and shall be responsible for adequate protection from damage.
- All dimensions shown are to be verified on site prior to any construction. No deviations are to be made from the layouts as shown on this plan without prior consultation with the Landscape Architect and Owner.
- Obtain approval of Landscape Architect for granular base and layout of all pavement areas prior to construction.
- Stake planting locations and receive approval of Landscape Architect, prior to excavation of any planting pits. No substitutions of plant material shall be made without prior approval of the Landscape Architect.
- Where clay is encountered proper drainage must be ensured in tree/shrub pits, prior to planting. Have method approved by Landscape Architect.
- All sodded areas to receive a minimum of 150mm of topsoil over graded sub-base. If sod with mesh is used, mesh to be removed completely during sodding operations. Sod shall come from an approved source and shall be laid within 24 hours of being cut in the nursery. Only nursery sod shall be used.
- Final subgrade is to be approved by the Landscape Architect prior to sod being laid.
- Maintain positive surface runoff through the entire construction period.
- Reinstate all areas and items damaged as a result of construction activities.

2	Re-issued for Site Plan Control	2025-04-15
1	Issued for Site Plan Control	2025-03-11
no.	revision	date

Ruhland & Associates Ltd
204-1750 Courtwood Crescent, Ottawa, Ontario K2C 3B5
P (613) 224-4744 x 222 F (613) 224-1151 info@ruhland.ca www.ruhland.ca

architect

N45 ARCHITECTURE INC.
71 Bank Street, 7th Floor - Ottawa, Ontario, K1P 5A2
Tel: 613.224.0955 Fax: 613.224.8811

surveyor

Monument-Urso Surveying Ltd.
Ontario Land Surveyors Canada Land Surveyors
1755 Woodward Drive, Ottawa, ON K2C 0P9
TEL: (613) 805-1563
338 C FOURTH LINE EAST, SAULT STE. MARIE, ON, P6A 6J8
TEL: (705) 254-7651 FAX: (705) 254-5671

civil engineer

NOVATECH NOVATECH
Engineers, Planners & Landscape Architects
structural and geotechnical engineer

Stantec STANTEC
440-331 CLYDE AVENUE
OTTAWA ON K2C 3S4
T: 613.738.9070

CARPENTERS DISTRICT COUNCIL OF ONTARIO LOCAL 93. - ADDITION
CAMPEAU DRIVE
OTTAWA, ON

north

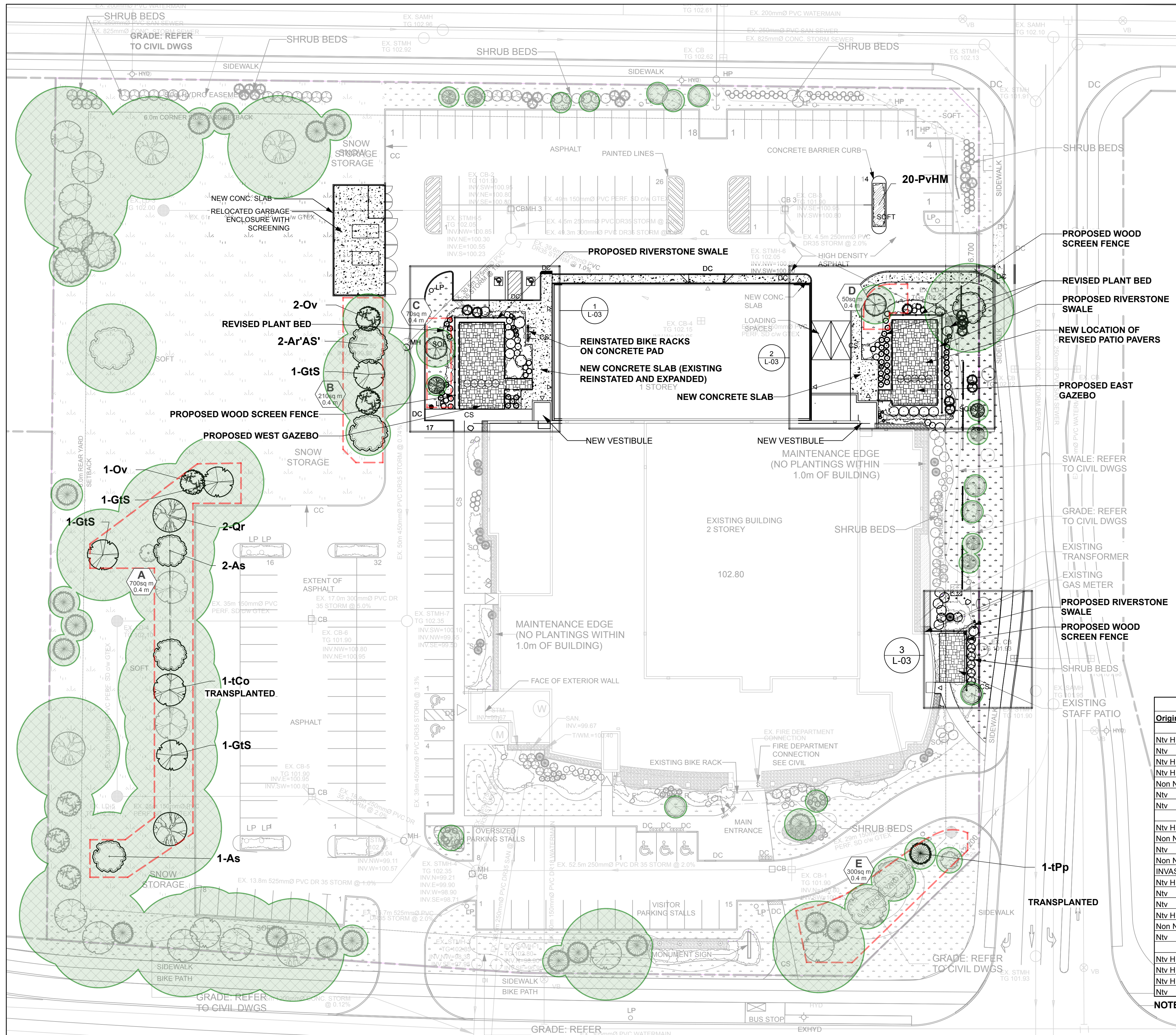
drawing title

EXISTING CONDITION / REMOVALS

scale	1:400	drawn by	T. Frost / V. Odusanya
date	2023 06 09	checked by	M. Ruhland
project number	N45 23-790	drawing number	
RA	23-1724		
CONTRACTOR TO VERIFY ALL DIMENSIONS AND NOTIFY THE ARCHITECT OF ANY DISCREPANCIES BEFORE WORK COMMENCES.		revision	
DO NOT SCALE DRAWINGS			

L-01

XXXXXX



1 PROPOSED LANDSCAPE PLAN
Scale: 1:400

LEGEND

- PROPOSED LANDSCAPE ADDITION
- CONCRETE PAVEMENT / WALKWAY
- PEASTONE
- SEED
- SOD
- PAVERS
- RIVERSTONE SWALE
- CHAIN LINK FENCE
- PERENNIALS
- TREES
- SHRUB BEDS
- STREET TREES
- TREE SOIL VOLUME AREA
- TREE CANOPY AREA

Mature Tree Canopy Cover

	AREA (m2)
Total Canopy Area	5761
Total Site Area	26300
Percent coverage	22%

(Sum of area of predicted mature canopies of all trees calculated on total shade area, divided by total property area.)

GENERAL NOTES

- ALL GENERAL SITE INFORMATION AND CONDITIONS COMPILED FROM EXISTING PLANS, SURVEYS AND CONSULTANT'S FIELD NOTES. REPORT ALL DISCREPANCIES PRIOR TO ANY WORK. NO RESPONSIBILITY IS BORN BY THE CONSULTANT FOR UNKNOWN SUBSURFACE CONDITIONS.
- THE LOCATION OF THE UTILITIES IS APPROXIMATE ONLY, AND THE EXACT LOCATION SHOULD BE DETERMINED BY CONSULTING THE MUNICIPAL AUTHORITIES AND UTILITY COMPANIES CONCERNED. THE CONTRACTOR SHALL PROVE THE LOCATION OF UTILITIES AND SHALL BE RESPONSIBLE FOR ADEQUATE PROTECTION FROM DAMAGE.
- ALL DIMENSIONS SHOWN ARE TO BE VERIFIED ON SITE PRIOR TO ANY CONSTRUCTION. NO DEVIATIONS ARE TO BE MADE FROM THE LAYOUTS AS SHOWN ON THIS PLAN WITHOUT PRIOR CONSULTATION WITH THE LANDSCAPE ARCHITECT AND OWNER.
- OBTAIN APPROVAL OF LANDSCAPE ARCHITECT FOR GRANULAR BASE AND LAYOUT OF ALL PAVEMENT AREAS PRIOR TO CONSTRUCTION.
- STAKE PLANTING LOCATIONS AND RECEIVE APPROVAL OF LANDSCAPE ARCHITECT, PRIOR TO EXCAVATION OF ANY PLANTING PITS. NO SUBSTITUTIONS OF PLANT MATERIAL SHALL BE MADE WITHOUT PRIOR APPROVAL OF THE LANDSCAPE ARCHITECT.
- WHERE CLAY IS ENCOUNTERED PROPER DRAINAGE MUST BE ENSURED IN TREE/SHRUB PITS, PRIOR TO PLANTING. HAVE METHOD APPROVED BY LANDSCAPE ARCHITECT.
- ALL SODDED AREAS TO RECEIVE A MINIMUM OF 150MM OF TOPSOIL OVER GRADED SUB-BASE. IF SOD WITH MESH IS USED, MESH TO BE REMOVED COMPLETELY DURING SODDING OPERATIONS. SOD SHALL COME FROM AN APPROVED SOURCE AND SHALL BE LAID WITHIN 24 HOURS OF BEING CUT IN THE NURSERY. ONLY NURSERY SOD SHALL BE USED.
- FINAL SUBGRADE IS TO APPROVED BY THE LANDSCAPE ARCHITECT PRIOR TO SOD BEING LAID.
- MAINTAIN POSITIVE SURFACE RUNOFF THROUGH THE ENTIRE CONSTRUCTION PERIOD.
- REINSTATE ALL AREAS AND ITEMS DAMAGED AS A RESULT OF CONSTRUCTION ACTIVITIES.
- STREET TREE SPECIES LOCATIONS AND NUMBERS WERE SELECTED BASED ON SOIL VOLUME CALCULATIONS IN ACCORDANCE WITH THE CITY OF OTTAWA'S REQUIREMENTS FOR TREE PLANTING.

Plant List - Simple					
Origin	ID	Qty	Botanical Name	Common Name	Sched. Size Remarks
Proposed new trees					
Ntv H	Ar'AS'	2	Acer rubrum 'Autumn Spire'	Red Maple	70mm caliper WB, Staked
Ntv	As	3	Acer saccharum	Sugar Maple	60mm caliper WB, Staked
Ntv H	CcgC	2	Crataegus crus-galli inermis 'Cruzam'	Thornless Crusader Cockspur Hawthorn	45mm caliper WB, Staked
Ntv H	GtS	4	Gleditsia triacanthos inermis 'Shademaker'	Shademaker Honey Locust	60mm caliper WB, Staked
Non N	MM	1	Malus x Makamik	Makamik Crabapple	50mm cal. B&B / WB
Ntv	Ov	3	Ostrya virginiana	Ironwood	50mm caliper WB, Staked
Ntv	Qr	2	Quercus rubra	Red Oak	60mm caliper WB, Staked
Plants to be transplanted or removed					
Ntv H	AcB	1	Amelanchier canadensis 'Ballerina'	Ballerina Serviceberry	REMOVE 45mm caliper WB, Staked
Non N	CaE	9	Cornus alba 'Elegantissima'	Silverleaf Dogwood	50cm ht. 1.0m o.c.
Ntv	JhBC	12	Juniperus horizontalis 'Blue Chip'	Blue Chip Juniper	50cm spd 1.1m o.c.
Non N	Md	23	Microbiota decussata	Russian Cypress	50cm spd 0.9m o.c.
INVASIVE	PcC	1	Pyrus calleryana 'Chanticleer'	Chanticleer Pear	REMOVE 50cm ht WB, Staked
Ntv H	PoDG	8	Physocarpus opulifolius 'Darts Gold'	Darts Gold Ninebark	40cm ht Potted
Ntv	Ra	6	Rhus aromatica	Fragrant Sumac	50cm ht Potted
Ntv	tCo	1	Celtis occidentalis	Common Hackberry	60mm caliper WB, Staked
Ntv H	ToH	7	Thuja occidentalis 'Holmstrup'	Holmstrup Eastern Arborvitae	150 cm ht. Potted
Non N	1tPp	1	Picea pungens	Colorado Spruce	200cm ht WB, Staked
Ntv	Vd	7	Viburnum dentatum	Arrowwood	80cm ht Bare root
Additional Plants					
Ntv H	PoDG	7	Physocarpus opulifolius 'Darts Gold'	Darts Gold Ninebark	40cm ht Potted
Ntv H	PvHM	20	Panicum virgatum 'Heavy Metal'	Heavy Metal Switch Grass	3 year Potted
Ntv H	ToF	5	Thuja occidentalis 'Fastigiata'	Fastigiata Eastern Arborvitae	175cm ht specimen
Ntv	Vd	3	Viburnum dentatum	Arrowwood	80cm ht Bare root

NOTE - PLANTS THAT CANNOT BE TRANSPLANTED ARE TO BE REPLACED WITH THE SAME SPECIES AND CULTIVAR

Soil Volume Area, Tree Quantity and Size	Tree Quantity	OTTAWA Target Soil Volume (m ³)	Design Soil Volume	Soil Adequacy percentage
AREA A - 9 large trees, 1 medium tree, 2 large existing trees, 1 medium existing tree				
plant bed (700 sq m x 0.4m ave deep)	13	228.0	280.0	123%
AREA B - 3 large trees, 2 medium trees				
plant bed (210 sq m x 0.4m ave deep)	5	84.0	84.0	100%
AREA C - 1 medium tree, 1 small tree				
plant bed (70 sq m x 0.4m ave deep)	2	27.0	28.0	104%
AREA D - 1 small tree				
plant bed (50 sq m x 0.4m ave deep)	1	20.0	20.0	100%
AREA E - 3 large trees, 3 conifers, 1 small tree				
plant bed (300 sq m x 0.4m ave deep)	7	111.0	120.0	108%



GENERAL NOTES

- All general site information and conditions compiled from existing plans, surveys and consultant's field notes. Report all discrepancies prior to any work. No responsibility is born by the Consultant for unknown subsurface conditions.
- The location of the utilities is approximate only, and the exact location should be determined by consulting the municipal authorities and utility companies concerned. The Contractor shall prove the location of utilities and shall be responsible for adequate protection from damage.
- All dimensions shown are to be verified on site prior to any construction. No deviations are to be made from the layouts as shown on this plan without prior consultation with the Landscape Architect and Owner.
- Obtain approval of Landscape Architect for granular base and layout of all pavement areas prior to construction.
- Stake planting locations and receive approval of Landscape Architect, prior to excavation of any planting pits. No substitutions of plant material shall be made without prior approval of the Landscape Architect.
- Where clay is encountered proper drainage must be ensured in tree/shrub pits, prior to planting. Have method approved by Landscape Architect.
- All sodded areas to receive a minimum of 150mm of topsoil over graded sub-base. If sod with mesh is used, mesh to be removed completely during sodding operations. Sod shall come from an approved source and shall be laid within 24 hours of being cut in the nursery. Only nursery sod shall be used.
- Final subgrade is to be approved by the Landscape Architect prior to sod being laid.
- Maintain positive surface runoff through the entire construction period.
- Reinstate all areas and items damaged as a result of construction activities.

2	Re-issued for Site Plan Control	2025-04-15
1	Issued for Site Plan Control	2025-03-11
no.	revision	date

Ruhland & Associates Ltd

204-1750 Courtwood Crescent, Ottawa, Ontario K2C 3B5
P (613) 224-4744 x 222 F (613) 224-1151 info@rah.ca www.rah.ca

architect

N45 ARCHITECTURE INC.

71 Bank Street, 7th Floor - Ottawa, Ontario, K1P 9A2
Tel: 613.224.0905 Fax: 613.224.8811

surveyor Monument-Urso Surveying Ltd.
Ontario Land Surveyors Canada Land Surveyors
1725 WOODWARD DRIVE, OTTAWA, ON K2C 0P9
TEL: (613) 805-1583
3307 FOURTH LINE EAST, SAULT STE. MARIE, ON, P6A 6J8
TEL: (705) 254-7651 FAX: (705) 254-5671

civil engineer

NOVATECH NOVATECH
Engineers, Planners & Landscape Architects
240 MICHAEL COMPTON DRIVE,
SUITE 200 OTTAWA, ON, K2M 1P6
T: 613.254.9643

structural and geotechnical engineer

Stantec STANTEC
240 MICHAEL COMPTON DRIVE,
SUITE 200 OTTAWA, ON, K2M 1P6
T: 613.254.9643

CARPENTERS DISTRICT COUNCIL OF ONTARIO LOCAL 93. - ADDITION

CAMPEAU DRIVE
OTTAWA, ON

north seal

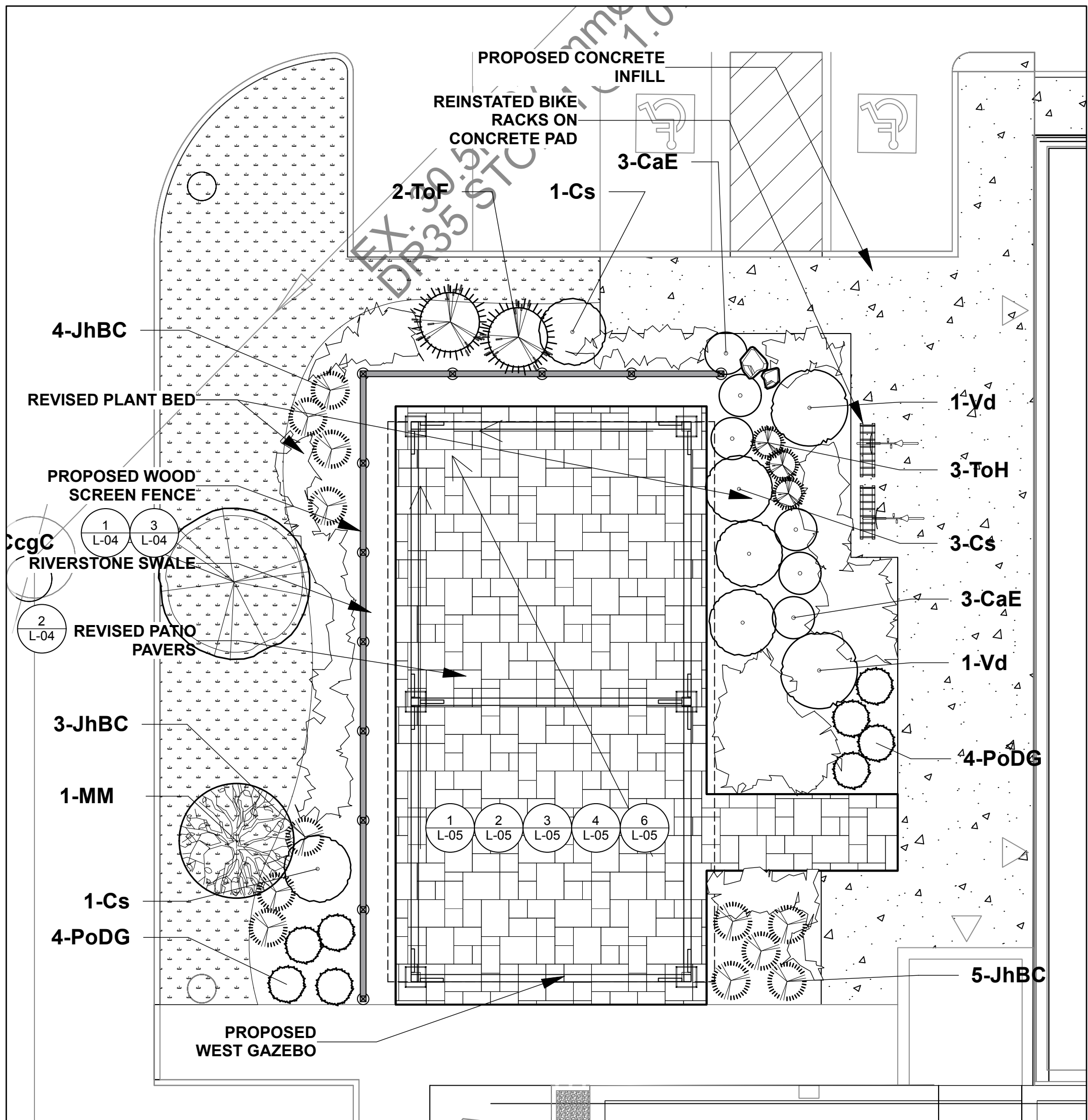


drawing title

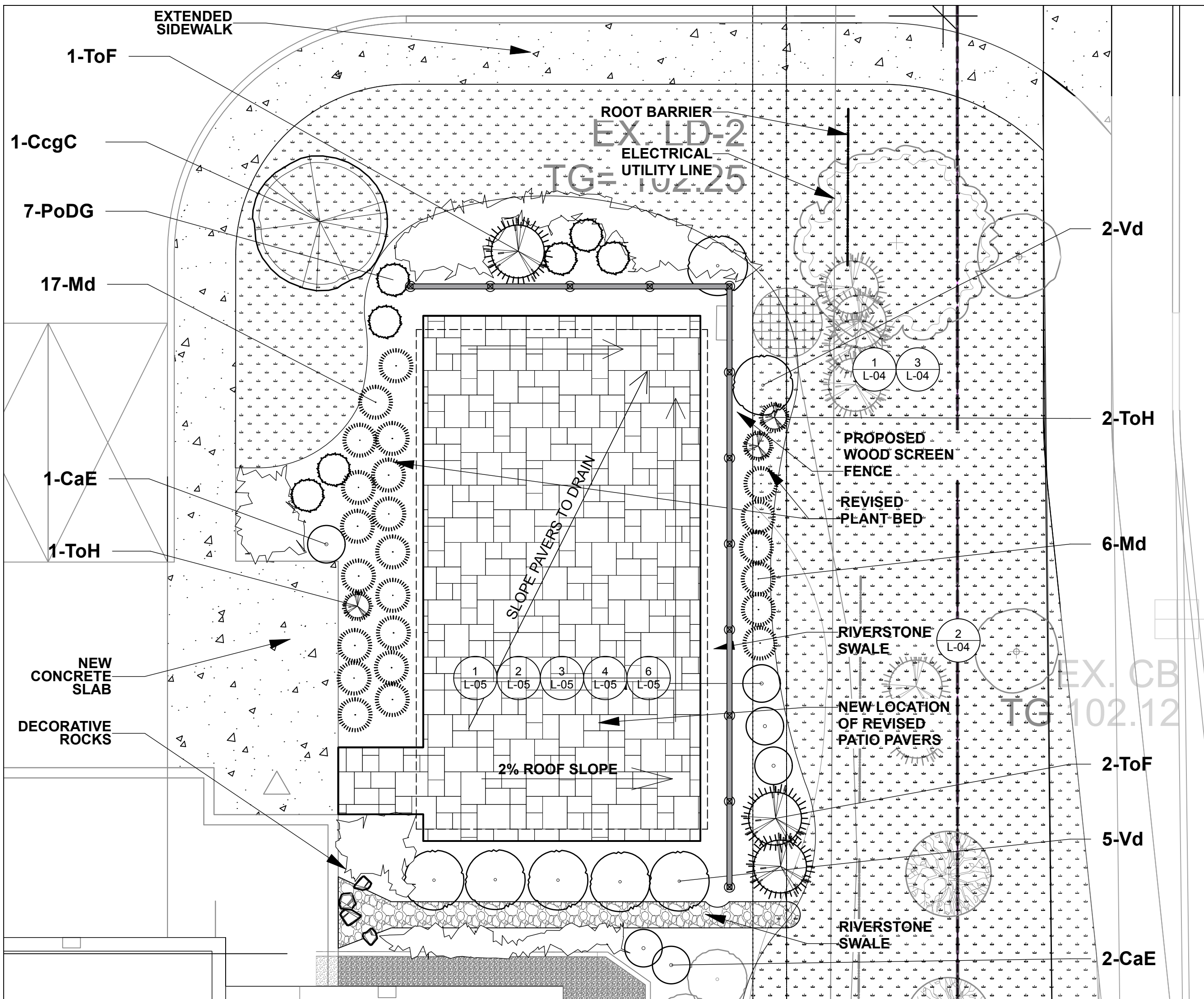
LANDSCAPE PLAN

scale	1:400	drawn by	T. Frost / V. Odusanya
date	2023 06 09	checked by	M. Ruhland
project number	N45 23-790	drawing number	L-02
RA	23-1724	revision	
CONTRACTOR TO VERIFY ALL DIMENSIONS AND NOTIFY THE ARCHITECT OF ANY DISCREPANCIES BEFORE WORK COMMENCES.			
DO NOT SCALE DRAWINGS			

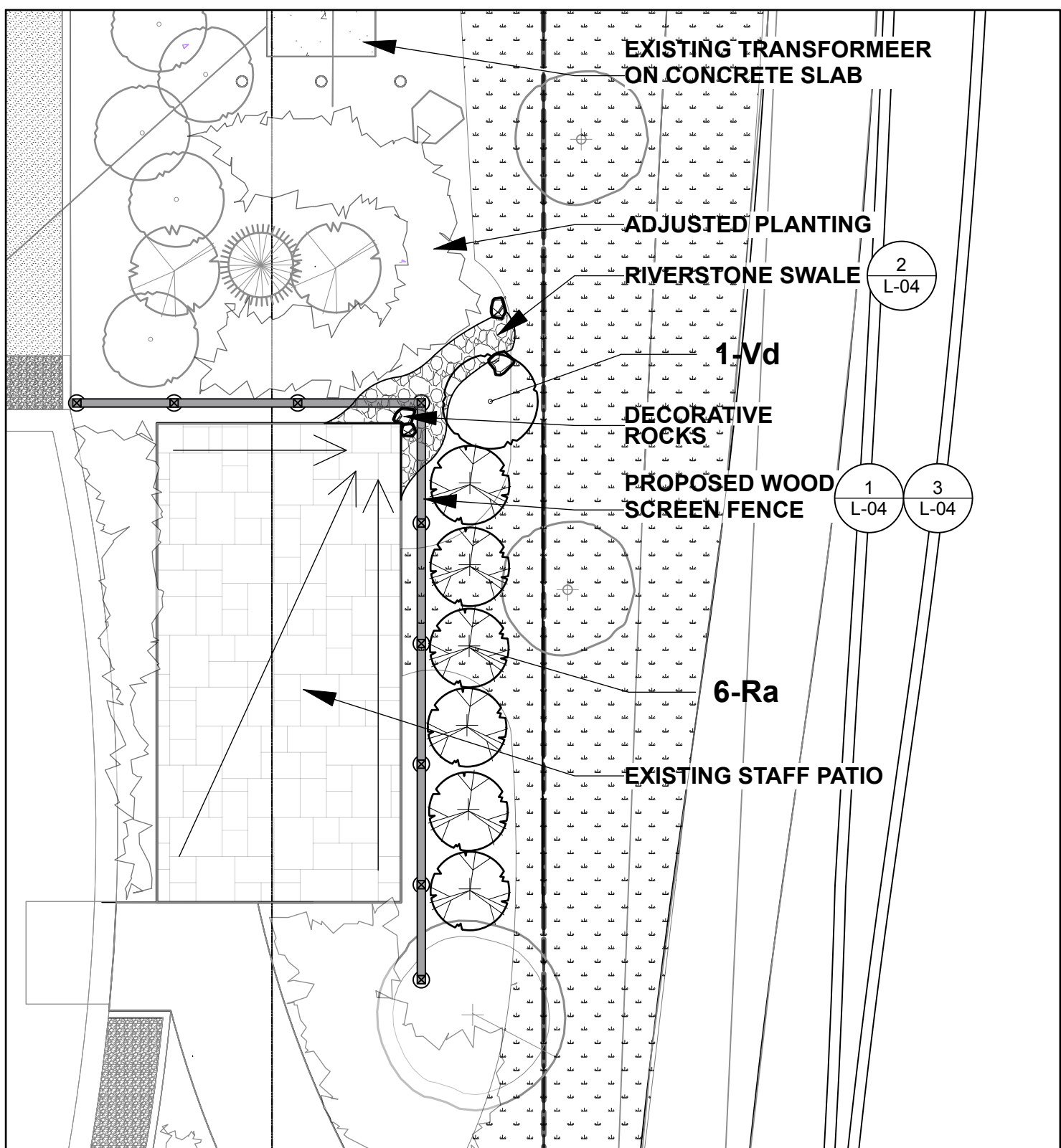
XXXXX



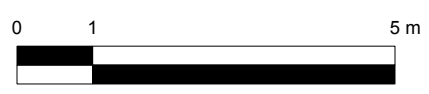
1 ENLARGEMENT - WEST PATIO
Scale: 1:100



2 ENLARGEMENT EAST PATIO
Scale: 1:100



3 ENLARGEMENT SOUTH PATIO
Scale: 1:100



- GENERAL NOTES
- 1 All general site information and conditions compiled from existing plans, surveys and consultant's field notes. Report all discrepancies prior to any work. No responsibility is born by the Consultant for unknown subsurface conditions.
 - 2 The location of the utilities is approximate only, and the exact location should be determined by consulting the municipal authorities and utility companies concerned. The Contractor shall prove the location of utilities and shall be responsible for adequate protection from damage.
 - 3 All dimensions shown are to be verified on site prior to any construction. No deviations are to be made from the layouts as shown on this plan without prior consultation with the Landscape Architect and Owner.
 - 4 Obtain approval of Landscape Architect for granular base and layout of all pavement areas prior to construction.
 - 5 Stake planting locations and receive approval of Landscape Architect, prior to excavation of any planting pits. No substitutions of plant material shall be made without prior approval of the Landscape Architect.
 - 6 Where clay is encountered proper drainage must be ensured in tree/shrub pits, prior to planting. Have method approved by Landscape Architect.
 - 7 All sodded areas to receive a minimum of 150mm of topsoil over graded sub-base. If sod with mesh is used, mesh to be removed completely during sodding operations. Sod shall come from an approved source and shall be laid within 24 hours of being cut in the nursery. Only nursery sod shall be used.
 - 8 Final subgrade is to approved by the Landscape Architect prior to sod being laid.
 - 9 Maintain positive surface runoff through the entire construction period.
 - 10 Reinstatement all areas and items damaged as a result of construction activities.

2	Re-issued for Site Plan Control	2025-04-15
1	Issued for Site Plan Control	2025-03-11
no.	revision	date

Ruhland & Associates Ltd
204-1750 Courtwood Crescent, Ottawa, Ontario K1C 3B5
P (613) 224-4744 x 222 F (613) 224-4151 info@ra.ca www.ra.ca

architect
N45 ARCHITECTURE INC.
71 Bank Street, 7th Floor - Ottawa, Ontario, K1P 5K2
Tel: 613.224.0955 Fax: 613.224.8811

surveyor
Monument-Urso Surveying Ltd.
Ontario Land Surveyors Canada Land Surveyors
1755 WOODWARD DRIVE, OTTAWA ON, K2C 0P9
TEL: (613) 805-1553
338 C FOURTH LINE EAST, SAULT STE. MARIE ON, P6A 6J8
TEL: (705) 254-7651 FAX: (705) 254-5571

civil engineer
NOVATECH NOVATECH
Engineers, Planners & Landscape Architects
240 MICHAEL COMPTON DRIVE, SUITE 200 OTTAWA, ON, K2M 1P6
T: 613.254.9643

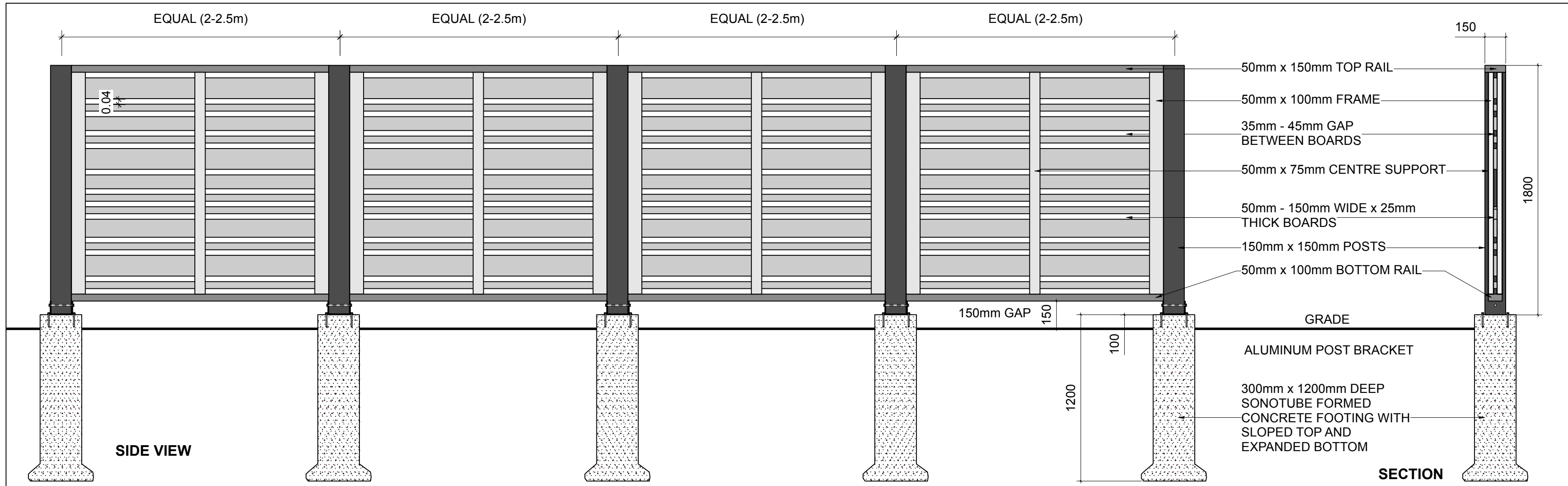
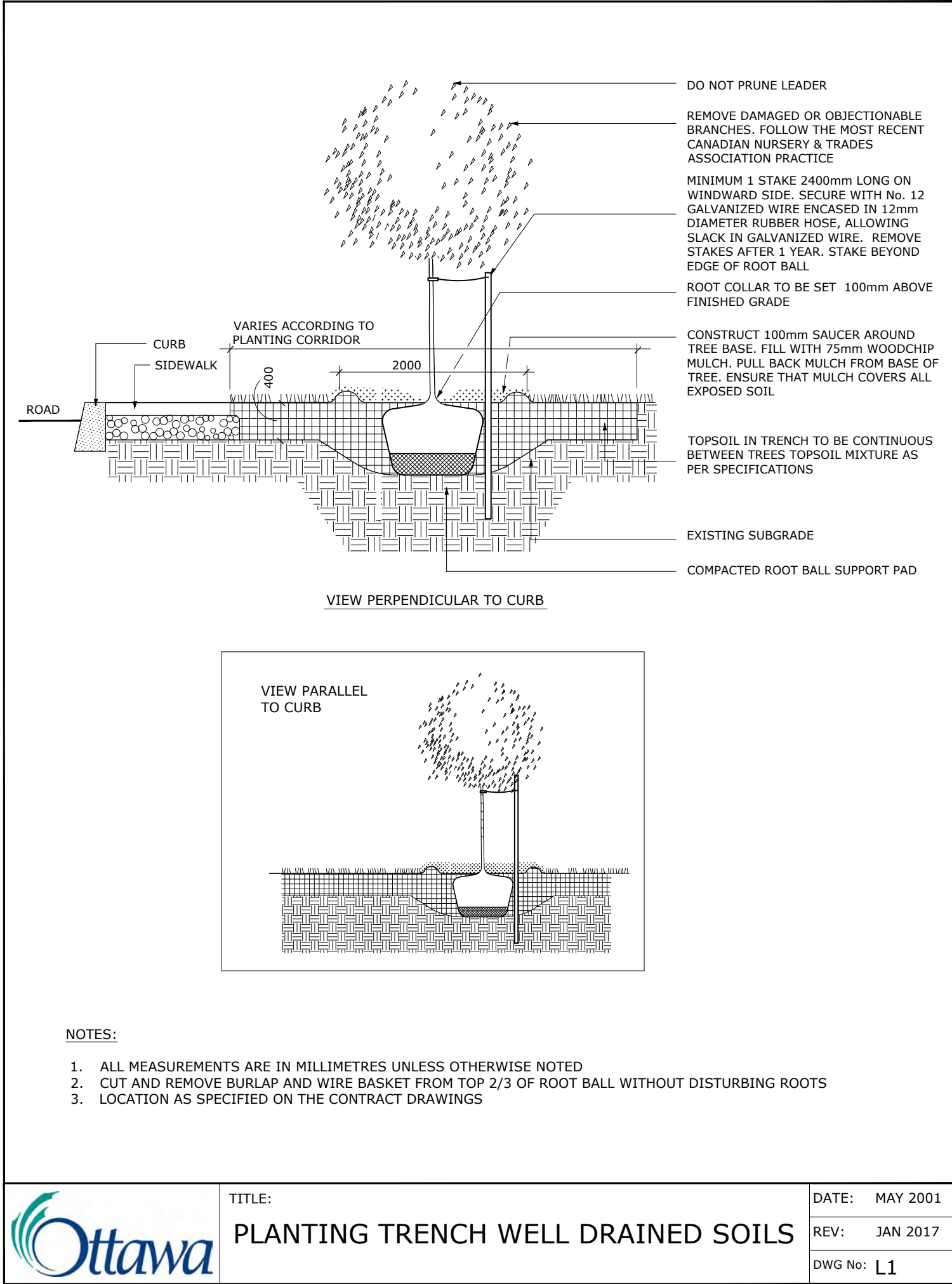
structural and geotechnical engineer
Stantec STANTEC
400-1311 CLYDE AVENUE, OTTAWA ON K2C 3S4
T: 613.738.9070

CARPENTERS DISTRICT COUNCIL OF ONTARIO LOCAL 93. - ADDITION
CAMPEAU DRIVE
OTTAWA, ON

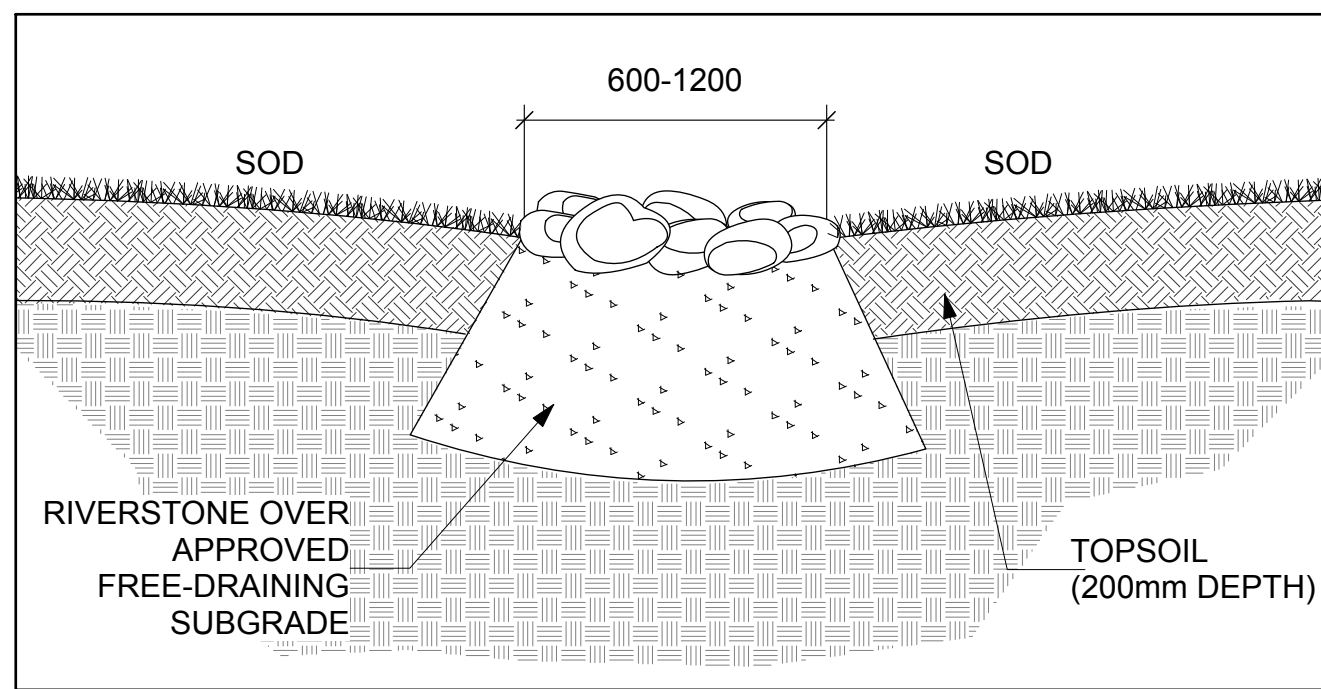


drawing title	
PLAN ENLARGEMENTS	
scale	1:100
drawn by	T. Frost / V. Odusanya
date	2023 06 09
checked by	M. Ruhland
project number	N45 23-790
drawing number	RA 23-1724
L-03	
CONTRACTOR TO VERIFY ALL DIMENSIONS AND NOTIFY THE ARCHITECT OF ANY DISCREPANCIES BEFORE WORK COMMENCES.	
DO NOT SCALE DRAWINGS	
revision	

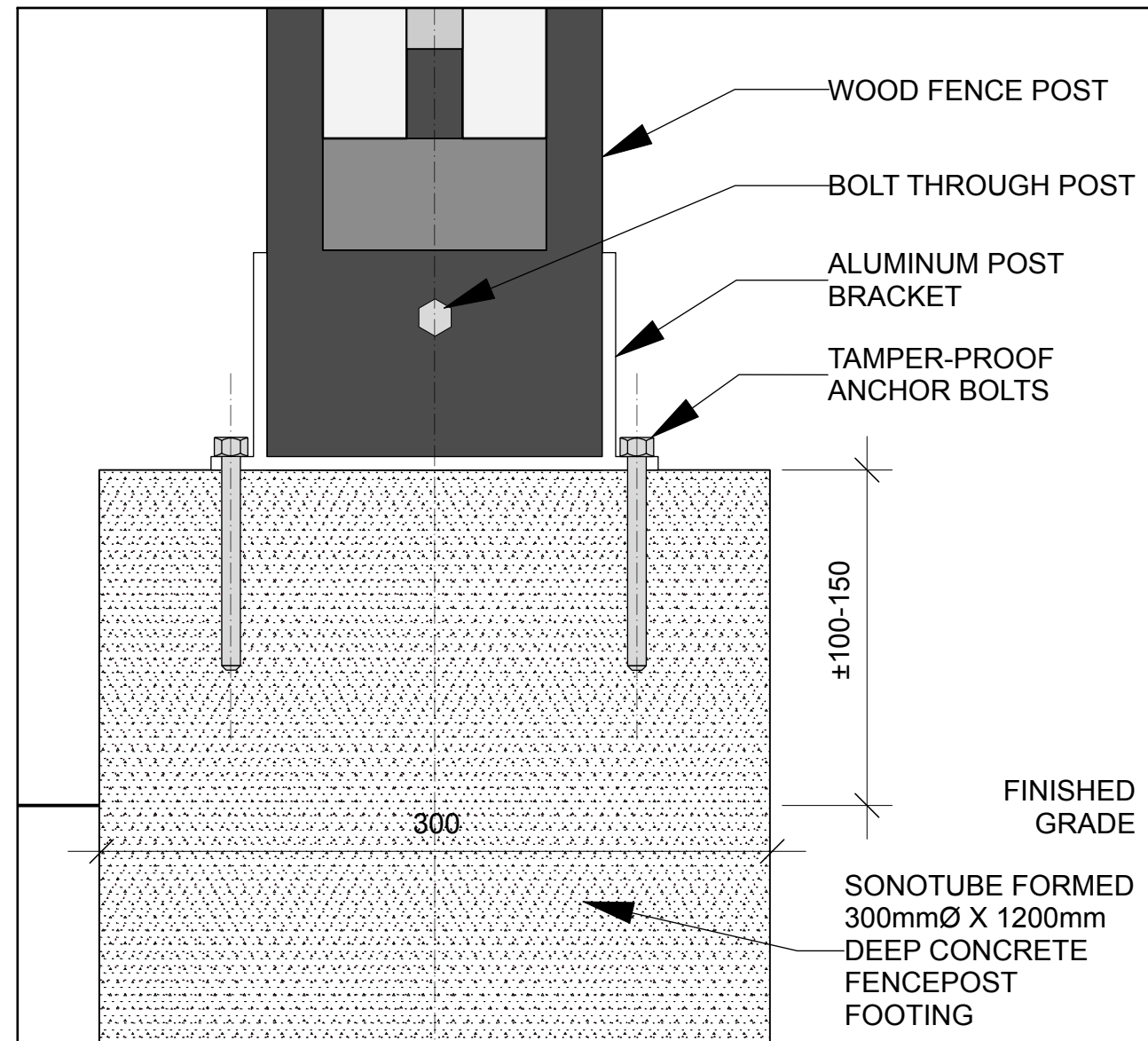
XXXXX



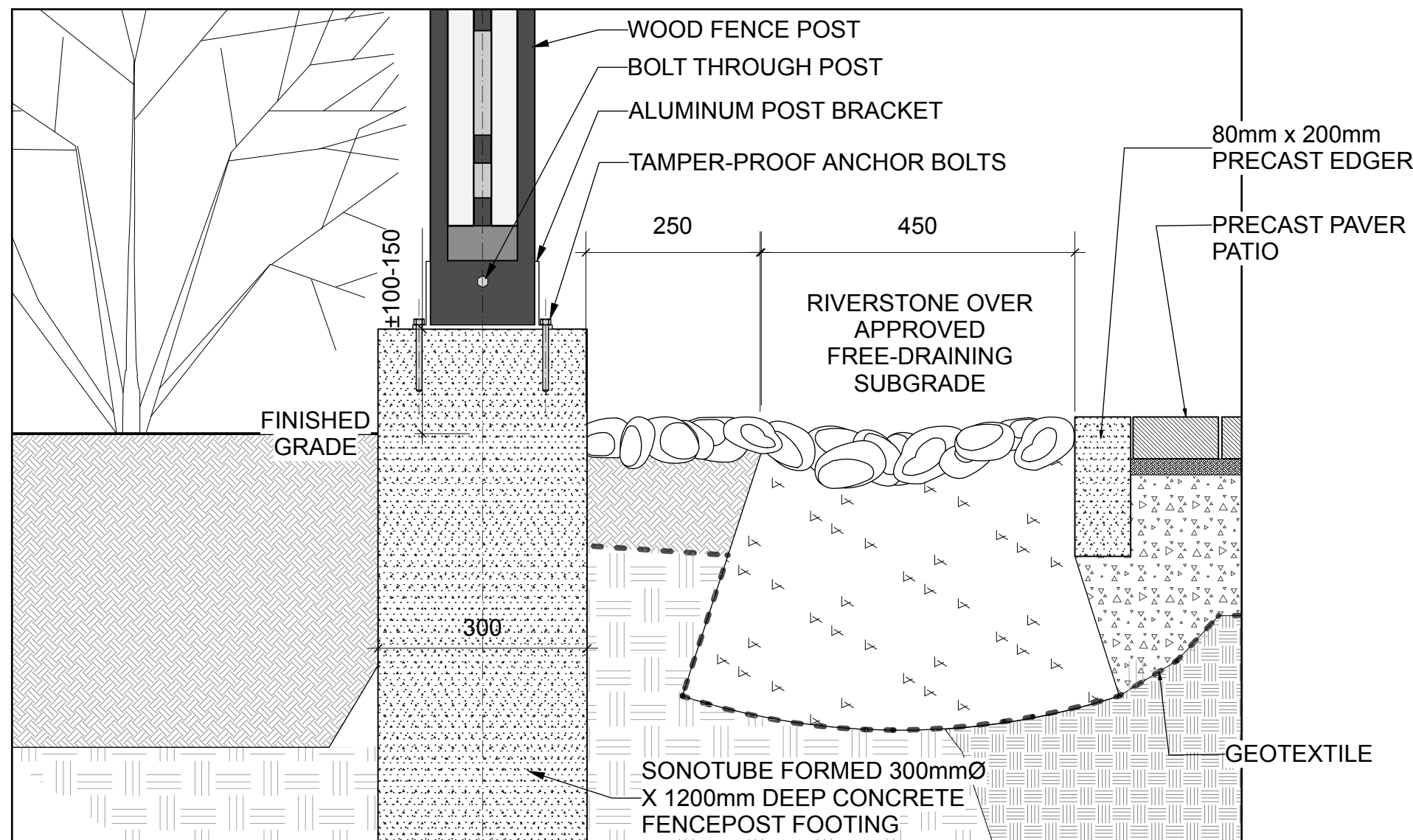
1 CEDAR SCREEN FENCE WITH CONCRETE FOOTINGS



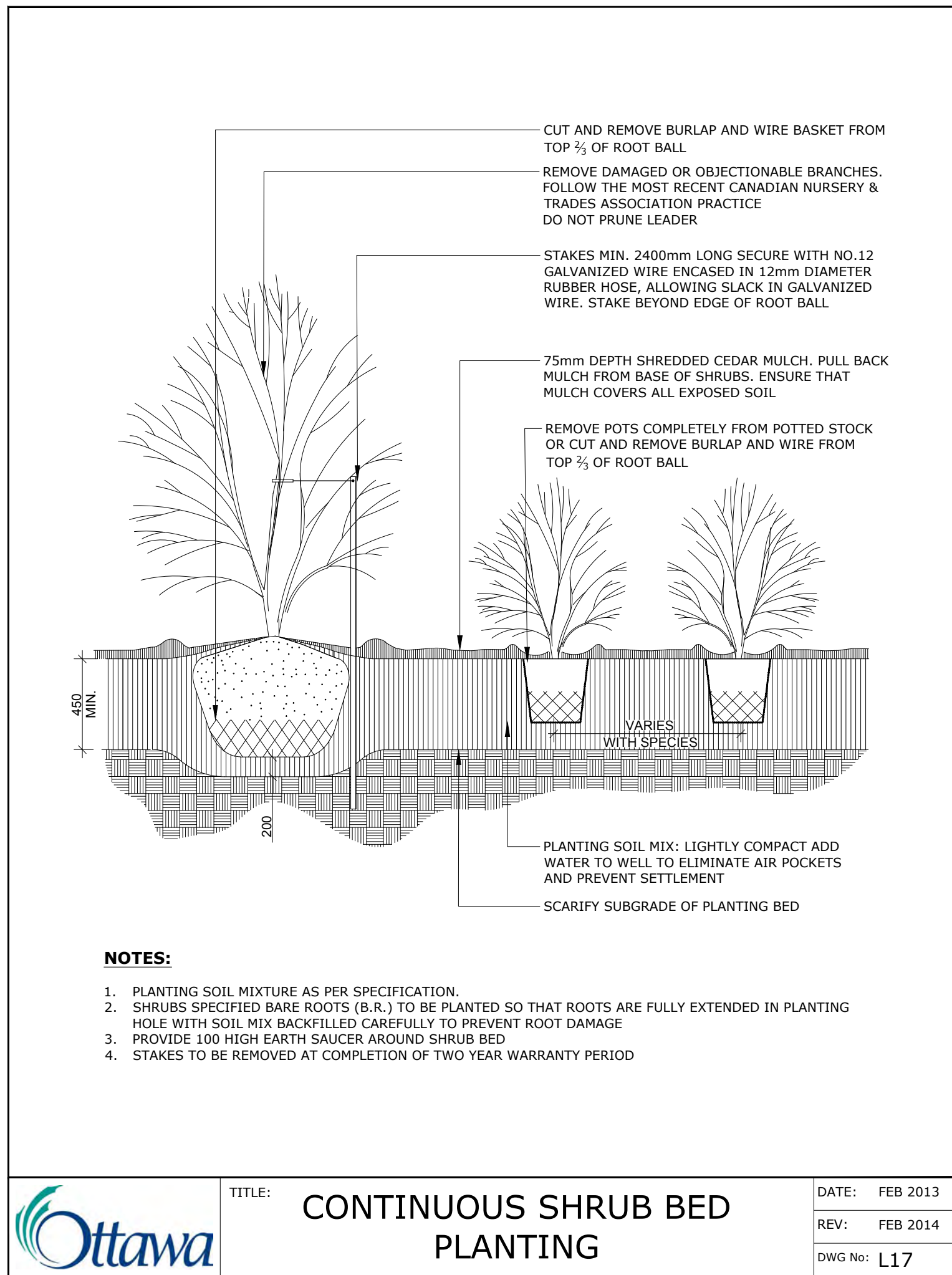
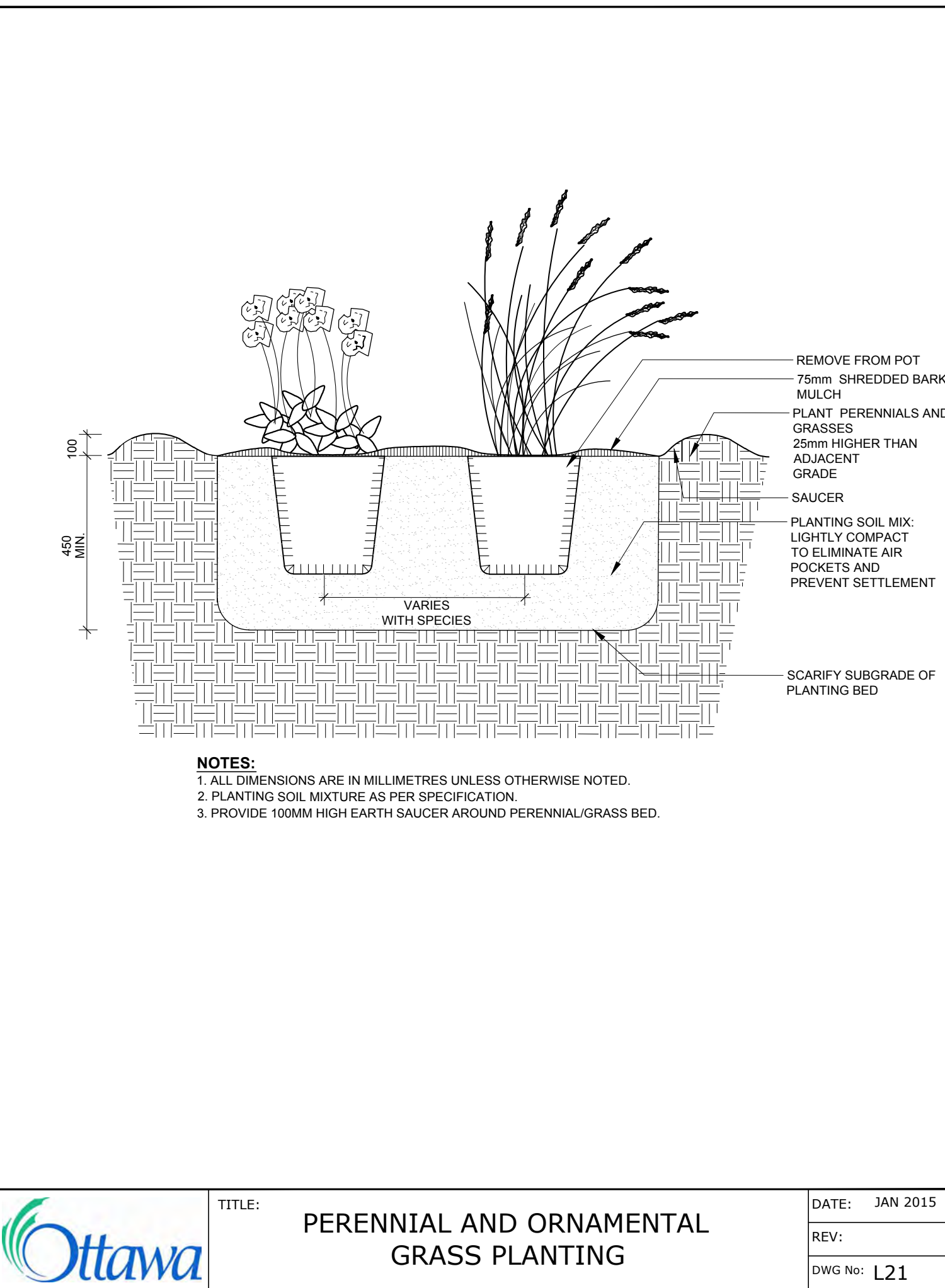
2 SWALE SECTION



3 FENCE POST BASE



4 SWALE SECTION AT PERGOLA



GENERAL NOTES

1. All general site information and conditions compiled from existing plans, surveys and consultant's field notes. Report all discrepancies prior to any work. No responsibility is born by the Consultant for unknown subsurface conditions.
2. The location of the utilities is approximate only, and the exact location should be determined by consulting the municipal authorities and utility companies concerned. The Contractor shall prove the location of utilities and shall be responsible for adequate protection from damage.
3. All dimensions shown are to be verified on site prior to any construction. No deviations are to be made from the layouts as shown on this plan without prior consultation with the Landscape Architect and Owner.
4. Obtain approval of Landscape Architect for granular base and layout of all pavement areas prior to construction.
5. Stake planting locations and receive approval of Landscape Architect, prior to excavation of any planting pits. No substitutions of plant material shall be made without prior approval of the Landscape Architect.
6. Where clay is encountered proper drainage must be ensured in tree/shrub pits, prior to planting. Have method approved by Landscape Architect.
7. All sodded areas to receive a minimum of 150mm of topsoil over graded sub-base. If sod with mesh is used, mesh to be removed completely during sodding operations. Sod shall come from an approved source and shall be laid within 24 hours of being cut in the nursery. Only nursery sod shall be used.
8. Final subgrade is to be approved by the Landscape Architect prior to sod being laid.
9. Maintain positive surface runoff through the entire construction period.
10. Reinstatement all areas and items damaged as a result of construction activities.

no.	revision	date
2	Re-issued for Site Plan Control	2025-04-15
1	Issued for Site Plan Control	2025-03-11

Ruhland & Associates Ltd

204-1750 Courtwood Crescent, Ottawa, Ontario K4C 3B5
P: (613) 224-4744 x 822 F: (613) 224-4151 info@rah.ca www.rah.ca

architect

N45 ARCHITECTURE INC.

71 Bank Street, 7th Floor - Ottawa, Ontario, K1P 9A2
Tel: 613.224.0955 Fax: 613.224.8811

surveyor

Monument-Urso Surveying Ltd.
Ontario Land Surveyors Canada Land Surveyors
1755 WOODWARD DRIVE, OTTAWA ON, K2C 0P9
TEL: (613) 805-1583
3387 FOURTH LINE EAST, SAULT STE. MARIE ON, P6A 6J8
TEL: (705) 254-7651 FAX: (705) 254-5571

civil engineer

NOVATECH NOVATECH
Engineers, Planners & Landscape Architects
structural and geotechnical engineer
240 MICHAEL COWPLAND DRIVE,
SUITE 200 OTTAWA, ON, K2M 1P6
T: 613.254.9643

STANTEC
440-331 CLYDE AVENUE
OTTAWA ON K2C 3S4
T: 613.738.8070

CARPENTERS DISTRICT COUNCIL OF ONTARIO LOCAL 93. - ADDITION

CAMPEAU DRIVE
OTTAWA, ON

north

seal

ASSOCIATION OF LANDSCAPE ARCHITECTS - ONTARIO

drawing title

DETAILS

scale	drawn by
	T. Frost / V. Odusanya

date	checked by
2023 06 09	M. Ruhland

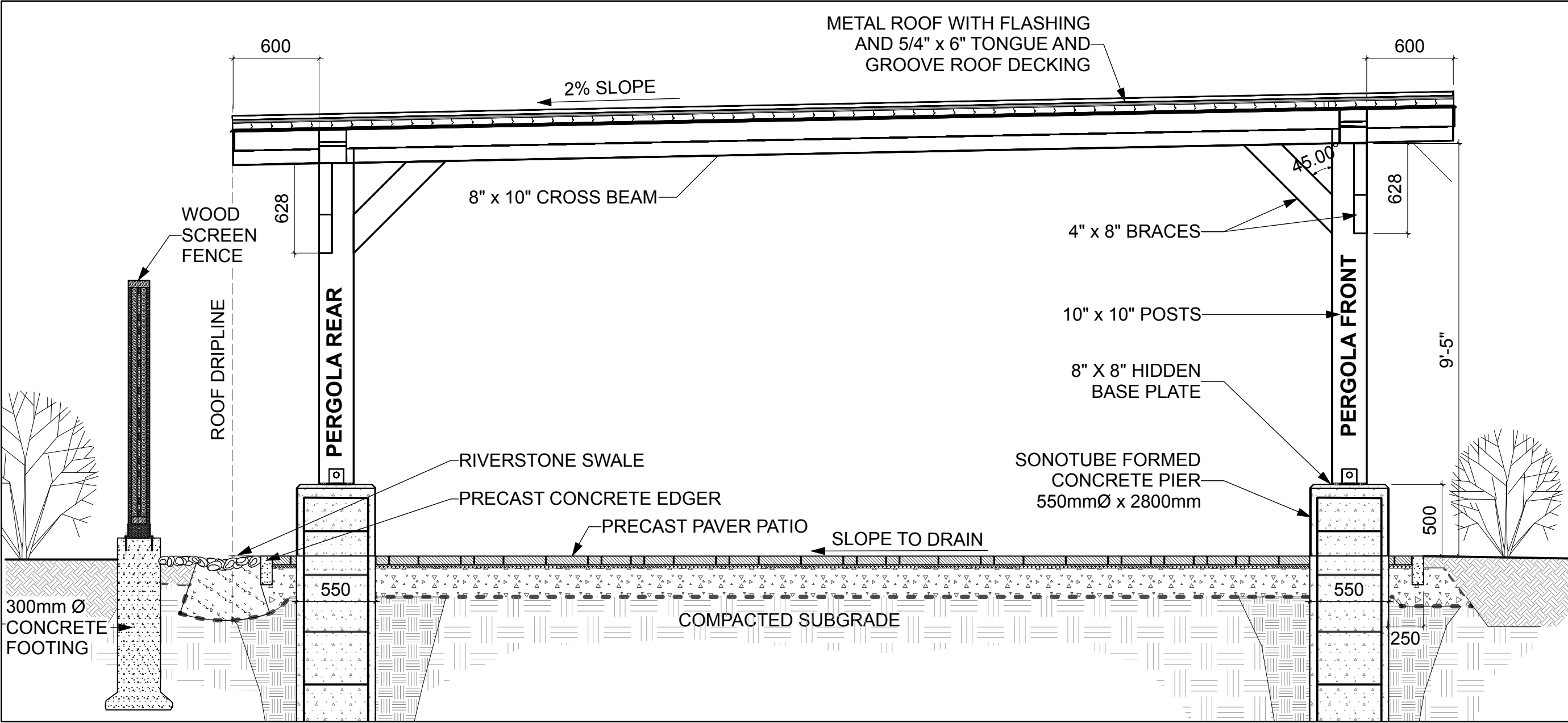
project number	drawing number
N45 23-790	L-04

RA	revision
23-1724	

CONTRACTOR TO VERIFY ALL DIMENSIONS AND NOTIFY THE ARCHITECT OF ANY DISCREPANCIES BEFORE WORK COMMENCES.

DO NOT SCALE DRAWINGS

XXXXX

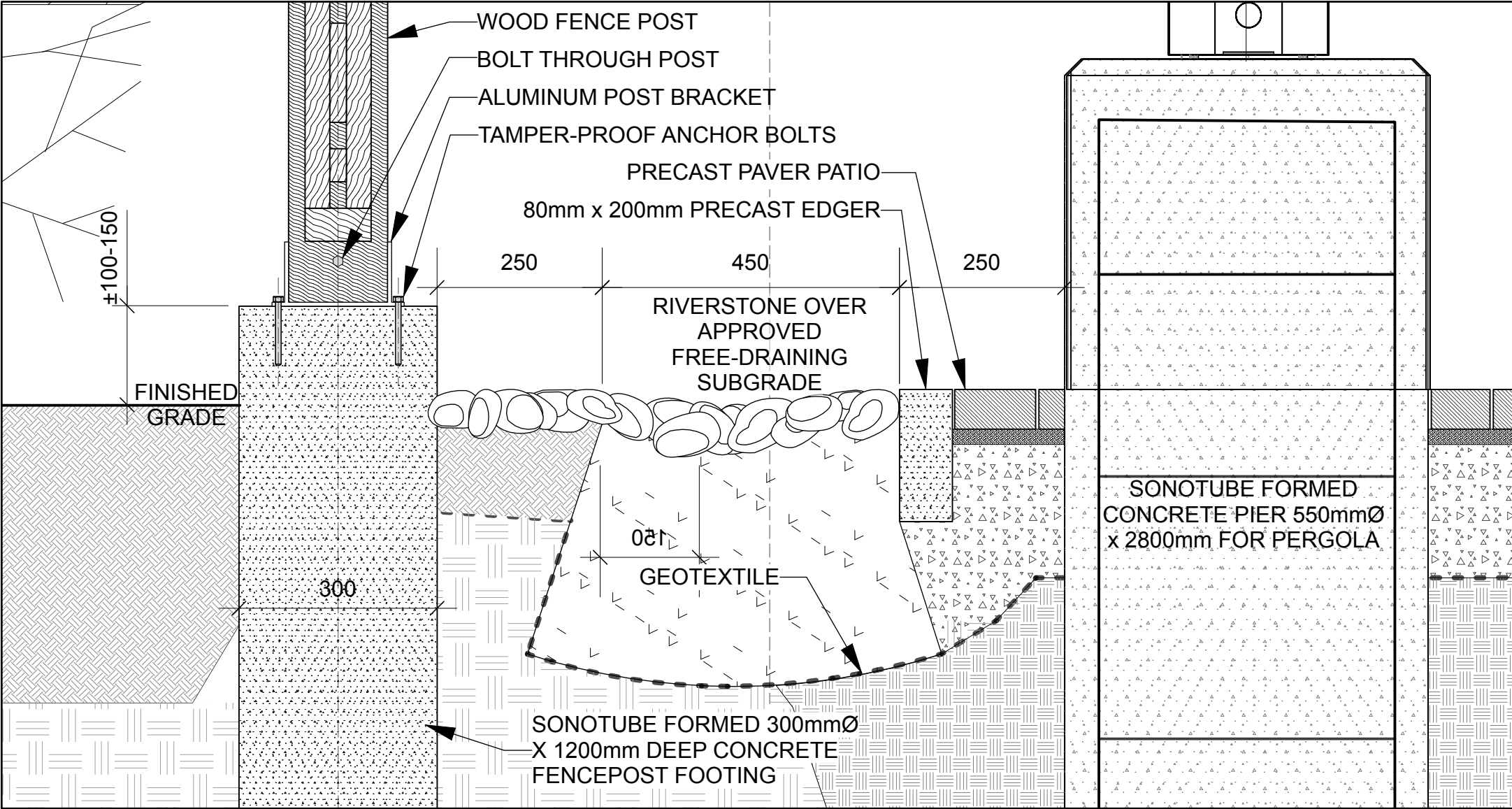


1 PERGOLA - SIDE ELEVATION
Scale: NTS

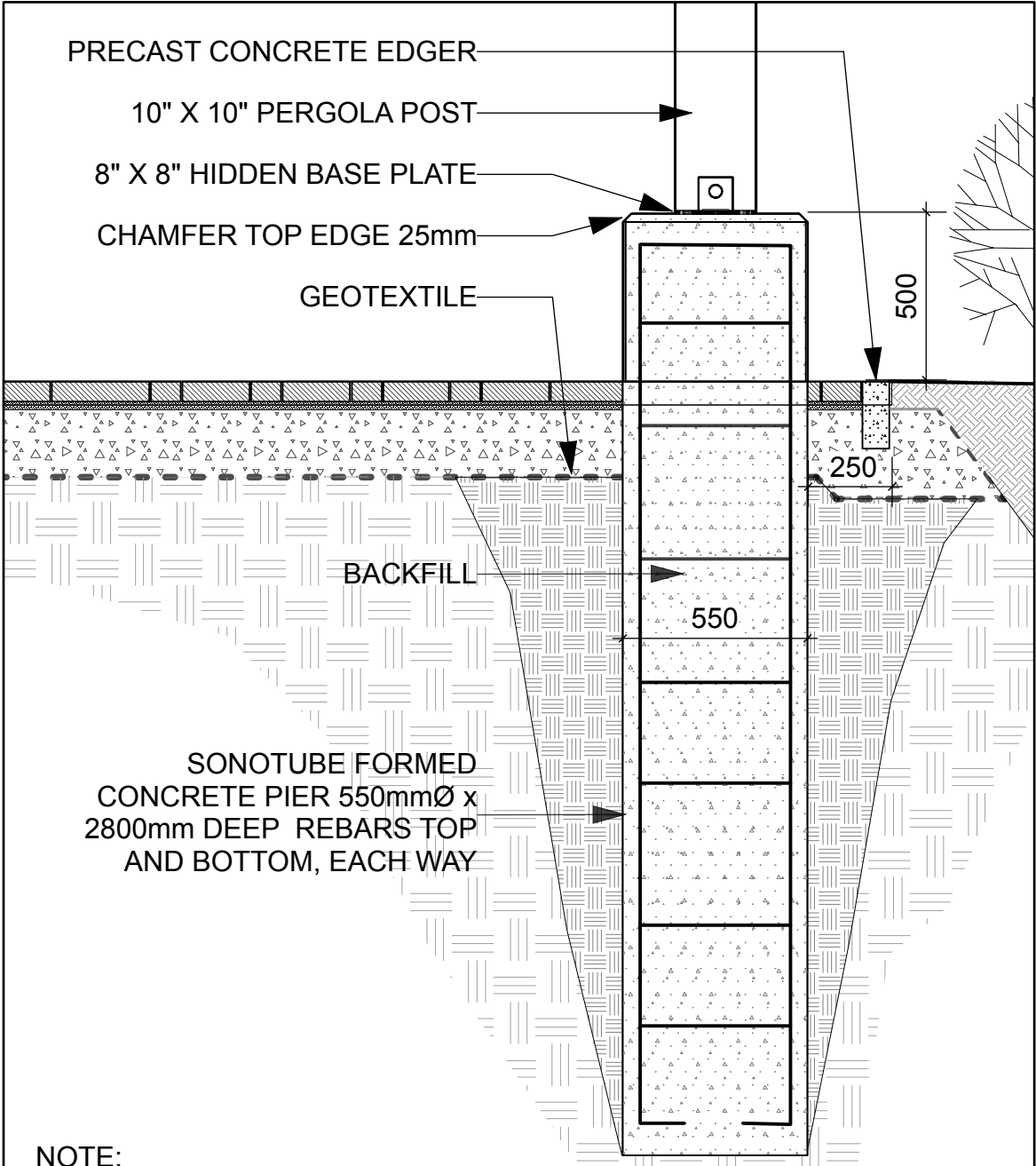


2 PERGOLA APPEARANCE
Scale: NTS

NOTE: PERGOLA CONFIGURATION TO BE ADJUSTED ACCORDING TO SITE.



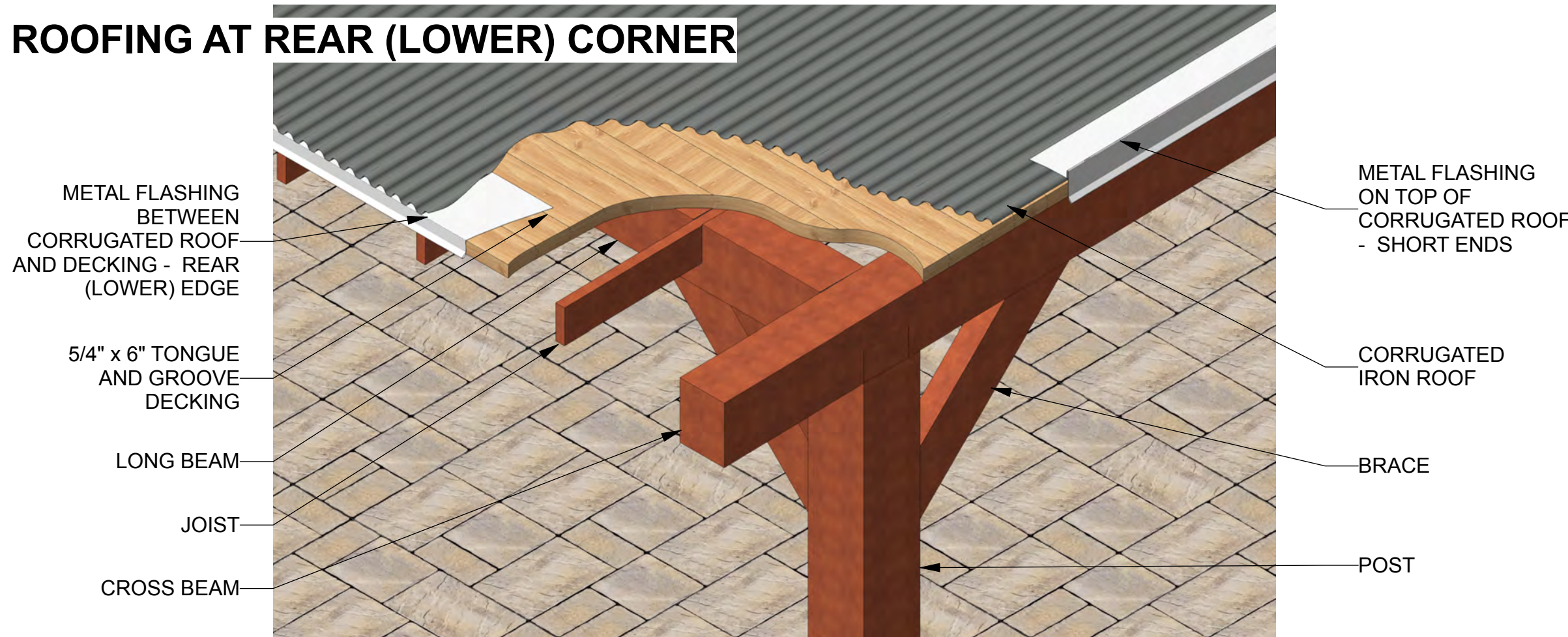
3 PERGOLA - FENCE FOOTING, SWALE, AND PERGOLA FOOTING SECTION
Scale: NTS



NOTE:
• CONCRETE IN PIER TO BE CLASS C-2 (32MPa, AIR 5-8%).
• CONCRETE IN FOOTING TO BE 25MPa.
• ALL EXPOSED SURFACES TO BE LIGHTLY SANDBLASTED.
• ALL REBARS TO BE EPOXY COATED.
• INSTALL PERGOLA AS PER MANUFACTURER'S SPECIFICATIONS

4 PERGOLA FOOTING
Scale: NTS

ROOFING AT REAR (LOWER) CORNER



5 PERGOLA-ROOF CONSTRUCTION
Scale: NTS

NOTE: DETAILS ARE SHOWN FOR DESIGN INTENT ONLY. PROVIDE FULL SHOP DRAWINGS, STAMPED BY A PROFESSIONAL ENGINEER LICENSED IN THE PROVINCE OF ONTARIO, FOR FOOTINGS, REBAR DIMENSIONS, ANCHORAGE SYSTEM, AND STRUCTURAL COMPONENTS.



GENERAL NOTES

- All general site information and conditions compiled from existing plans, surveys and consultant's field notes. Report all discrepancies prior to any work. No responsibility is born by the Consultant for unknown subsurface conditions.
- The location of the utilities is approximate only, and the exact location should be determined by consulting the municipal authorities and utility companies concerned. The Contractor shall prove the location of utilities and shall be responsible for adequate protection from damage.
- All dimensions shown are to be verified on site prior to any construction. No deviations are to be made from the layouts as shown on this plan without prior consultation with the Landscape Architect and Owner.
- Obtain approval of Landscape Architect for granular base and layout of all pavement areas prior to construction.
- Stake planting locations and receive approval of Landscape Architect, prior to excavation of any planting pits. No substitutions of plant material shall be made without prior approval of the Landscape Architect.
- Where clay is encountered proper drainage must be ensured in tree/shrub pits, prior to planting. Have method approved by Landscape Architect.
- All sodded areas to receive a minimum of 150mm of topsoil over graded sub-base. If sod with mesh is used, mesh to be removed completely during sodding operations. Sod shall come from an approved source and shall be laid within 24 hours of being cut in the nursery. Only nursery sod shall be used.
- Final subgrade is to approved by the Landscape Architect prior to sod being laid.
- Maintain positive surface runoff through the entire construction period.
- Reinstate all areas and items damaged as a result of construction activities.

no.	revision	date
1	Issued for Site Plan Control	2025-04-15
1	Issued for Site Plan Control	2025-03-11

Ruhland & Associates Ltd

204-1750 Courtwood Crescent, Ottawa, Ontario K4C 3B5
P (613) 224-4744 x 822 F (613) 224-4151 info@ralc.ca www.ralc.ca

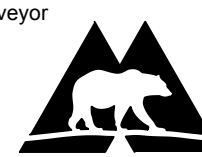
architect



N45 ARCHITECTURE INC.

71 Bank Street, 7th Floor - Ottawa, Ontario, K1P 5K2
Tel: 613.224.0955 Fax: 613.224.8811

surveyor



Monument-Urso Surveying Ltd.
Ontario Land Surveyors Canada Land Surveyors
1755 WOODWARD DRIVE, OTTAWA ON, K2C 0P9
TEL: (613) 805-1183
338 C FOURTH LINE EAST, SAULT STE. MARIE ON, P6A 6J8
TEL: (705) 254-7561 FAX: (705) 254-5571

civil engineer



Engineers, Planners & Landscape Architects

structural and geotechnical engineer



STANTEC
240 MICHAEL COMPTON DRIVE,
OTTAWA ON K2C 3S4
T: 613.738.9070

CARPENTERS DISTRICT COUNCIL OF ONTARIO LOCAL 93. - ADDITION

CAMPEAU DRIVE
OTTAWA, ON

north

seal



drawing title

PERGOLA DETAILS

scale	drawn by
date	checked by
2023 06 09	M. Ruhland
project number	drawing number
N45 23-790	L-05
RA 23-1724	revision
CONTRACTOR TO VERIFY ALL DIMENSIONS AND NOTIFY THE ARCHITECT OF ANY DISCREPANCIES BEFORE WORK COMMENCES.	
DO NOT SCALE DRAWINGS	