



EVERGREEN

330 LAURIER ANENUE EAST

CLIENT: ALL SAINTS DEVELOPMENT LP.
2025/02/26
Project Number: 160401789



LOCATION PLAN

LIST OF DRAWINGS

- LANDSCAPE DRAWINGS:**
- L100** LANDSCAPE PLAN
 - L101** PLANTING PLAN
 - L102** TREE CANOPY AND SOIL VOLUME
 - L200** GREEN ROOF LANDSCAPE PLAN
 - L600** LANDSCAPE DETAILS & NOTES - I
 - L601** LANDSCAPE DETAILS & NOTES - II
 - L602** LANDSCAPE DETAILS & NOTES - III

GENERAL LANDSCAPE NOTES

1. REFER TO TREE CONSERVATION REPORT FOR INFORMATION RELATED TO TREE REMOVAL / TREE PROTECTION DIRECTIONS. EXISTING VEGETATED AREAS ON ADJACENT PROPERTIES SHALL REMAIN AND BE PROTECTED BEFORE, DURING, AND AFTER CONSTRUCTION.
2. REFER TO ENGINEERING DRAWINGS FOR PROPOSED GRADING, AND SITE SERVICING.
3. EXISTING VEGETATED AREAS ON ADJACENT PROPERTIES SHALL REMAIN AND BE PROTECTED BEFORE, DURING, AND AFTER CONSTRUCTION.
4. SOD SHALL BE KENTUCKY BLUEGRASS SOD INSTALLED OVER 135MM OF TOPSOIL. SOD SHALL BE INSTALLED WHERE INDICATED ON THE LANDSCAPE PLANS AND IN ALL DISTURBED AREAS. INSTALL SOD AS PER OPSS 803.
5. CONTRACTOR TO LOCATE AND STAKE ALL UTILITIES PRIOR TO ANY WORK ON THE SITE AND TO OBTAIN CLEARANCE FROM ALL APPLICABLE UTILITIES. DO NOT PLANT DIRECTLY ABOVE UNDERGROUND UTILITIES. REPORT CONFLICTS AND ANY DISCREPANCIES TO THE LANDSCAPE ARCHITECT FOR DIRECTION.
6. NO TREES SHALL BE PLANTED ON PROPERTY / LOT LINES OR WITHIN DRAINAGE EASEMENTS.
7. NO TREES SHALL BE PLANTED UNDER OVERHEAD WIRES.
8. FOR TREES, MAINTAIN A MINIMUM DISTANCE OF 1500mm FROM ALL UNDERGROUND UTILITIES.
9. FOR TREES, MAINTAIN A MINIMUM DISTANCE OF 4500mm FROM ALL BUILDINGS.
10. FOR TREES, MAINTAIN A MINIMUM DISTANCE OF 4000mm FROM ALL HYDRO TRANSFORMERS.
11. FOR TREES, MAINTAIN A MINIMUM OF 1000mm FROM SIDEWALKS, PATHWAYS, AND DRIVEWAYS.
12. THE LANDSCAPE ARCHITECT MAY ADJUST THE LOCATION OF PLANTING PRIOR TO PLANTING TO MINIMIZE CONFLICTS WITH UTILITIES, DRIVEWAYS AND INTERSECTION VISIBILITY.
13. CONTRACTOR SHALL SUPPLY ALL MATERIALS IN QUANTITIES SUFFICIENT TO COMPLETE WORK SHOWN ON THESE DRAWINGS. ANY DISCREPANCIES SHALL BE REPORTED TO THE LANDSCAPE ARCHITECT FOR DIRECTION.
14. DO NOT MAKE SUBSTITUTIONS OF MATERIALS, PRODUCTS OR QUANTITIES WITHOUT PRIOR WRITTEN PERMISSION OF THE LANDSCAPE ARCHITECT.
15. PLANT MATERIAL QUALITY STANDARDS:

- 15.1. ALL PLANT MATERIAL TO CONFORM TO THE CANADIAN NURSERY TRADES ASSOCIATION AND THE CANADIAN STANDARDS FOR NURSERY STOCK AS TO SPECIES, SIZE AND CONDITION.
- 15.2. PLANT MATERIAL COLLECTED FROM WILD SOURCES ARE NOT ACCEPTABLE.
- 15.3. THE LANDSCAPE ARCHITECT RESERVES THE RIGHT TO REFUSE ACCEPTANCE OF ANY PLANT DISPLAYING POOR GROWTH HABITS APPROPRIATE TO SPECIES, DISEASE OR DAMAGE FROM POOR HANDLING DURING TRANSPORT, ON SITE STORAGE, INSTALLATION OR MAINTENANCE.
- 15.4. ANY PLANTS THAT DO NOT CONFORM TO THESE STANDARDS WILL BE PROMPTLY REMOVED FROM THE SITE BY THE CONTRACTOR AND REPLACED WITH MATERIAL OF ACCEPTABLE QUALITY AT NO ADDITIONAL COST TO THE PROJECT.
16. THE CONTRACTOR TO MAKE GOOD TO THE SATISFACTION OF THE LANDSCAPE ARCHITECT ANY AREAS DAMAGED BY THE WORK.
17. PRUNING - TO SUIT SPECIES - PRUNE BRANCHES BY 1/3 TO REMOVE DAMAGED OR OBJECTIONABLE BRANCHES FOLLOWING PROPER HORTICULTURAL PRACTICE. DO NOT PRUNE LEADERS.
18. UPON THE COMPLETION OF WORK EACH DAY, REMOVE ALL DEBRIS, GARBAGE AND SURPLUS MATERIALS FROM THE SITE. KEEP THE SITE CLEAN AND USEABLE AT ALL TIMES.
19. ALL WORKMANSHIP AND MATERIALS (INCLUDING PLANTS) TO BE GUARANTEED FOR ONE FULL YEAR FOLLOWING FINAL ACCEPTANCE OF THE PROJECT BY THE LANDSCAPE ARCHITECT.
20. THE CONTRACTOR SHALL REMOVE ALL TREE STAKES AND TREE SUPPORTS PRIOR TO ASSUMPTION BY THE OWNER.
21. AT THE TIME OF INSPECTION FOR ACCEPTANCE ALL TREE PITS SHALL BE CULTIVATED, FREE OF WEEDS, LEAVES, BROKEN BRANCHES AND DEBRIS.



Stantec Consulting Ltd.
300 - 1331 Clyde Avenue
Ottawa ON
Tel. 613.722.4420
www.stantec.com

Copyright Reserved

The Contractor shall verify and be responsible for all dimensions. DO NOT scale the drawing - any errors or omissions shall be reported to Stantec without delay.
The Copyrights to all designs and drawings are the property of Stantec. Reproduction or use for any purpose other than that authorized by Stantec is forbidden.

Legend

- EXISTING TREE
- LARGE DECIDUOUS TREE
- MEDIUM DECIDUOUS TREE
- COLUMNAR DECIDUOUS TREE
- PLANTING BED
- SOD
- SIDEWALK WITH SOIL CELLS
- BENCH
- STONE RETAINING WALL MAX. 900mm ht.
- LOW LANDSCAPE STONE WALL MAX. 500mm ht.
- PRIVACY SCREEN
- ARCHITECTURAL FENCE
- VENTILATION GRATE
- RIVERWASHED STONES
- CONCRETE RETAINING WALL
- CONCRETE CURB
- UNIT PAVERS
- BIKE RACK
- 150mm X150mm AREA DRAIN
- WALL-MOUNTED LIGHT
- PROPERTY LINE

Notes

10	ISSUED FOR CITY REVIEW	TA	KP	25.02.26
9	ISSUED FOR 'CLASS B' BUDGET	TA	KP	25.01.08
8	ISSUED FOR CITY REVIEW	TA	KP	24.12.12
7	ISSUED FOR SUSTAINABILITY REVIEW	TA	KP	24.10.25
6	ISSUED FOR CITY REVIEW	TA	KP	24.09.23
Revision		By	Appd.	YY.MM.DD
File Name: 160410406		CA	KP	23.04.25
		Dwn.	Chkd.	Dsgn.
				YY.MM.DD

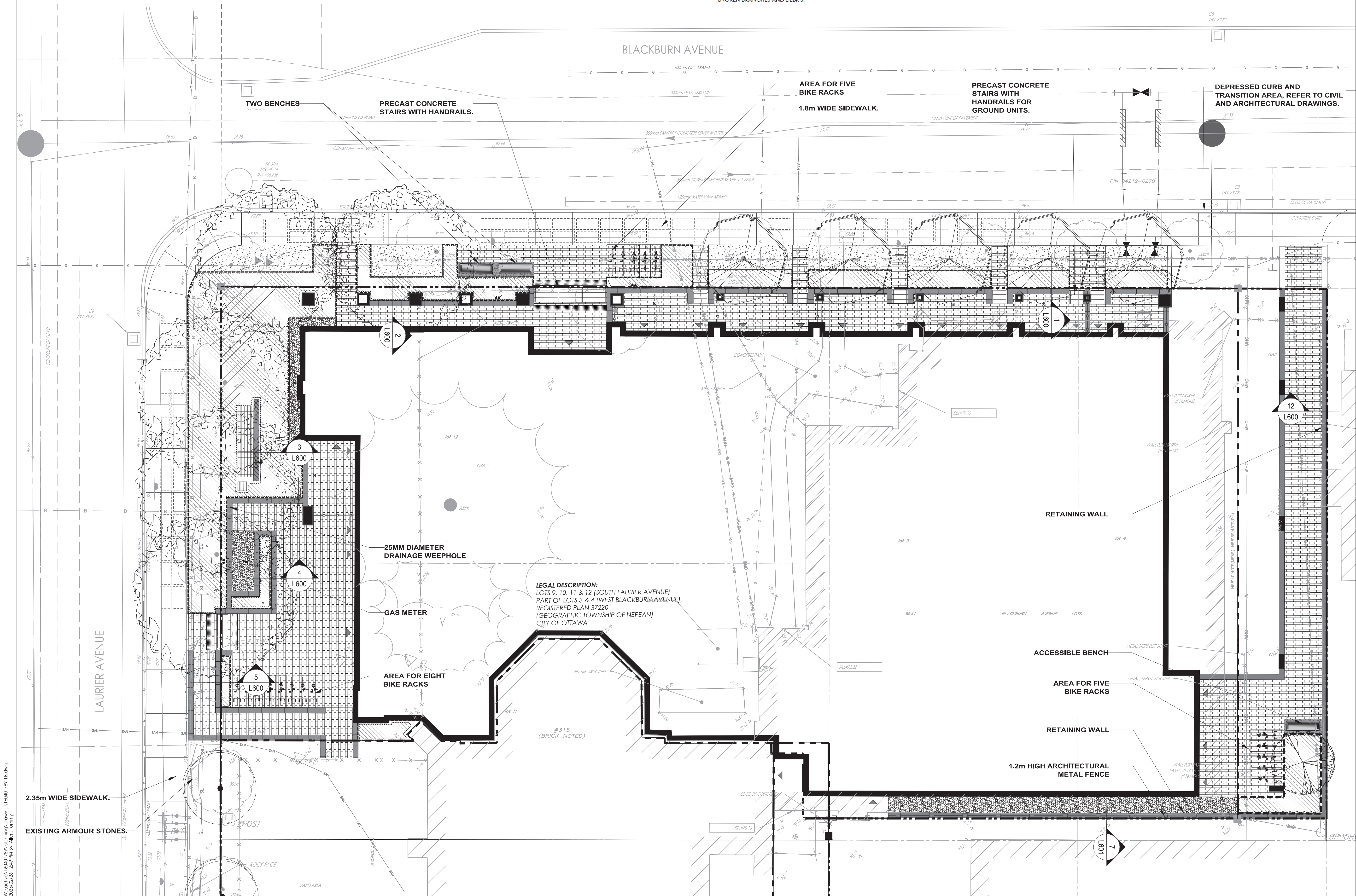


Client/Project
ALL SAINTS DEVELOPMENT LP

WINDMILL
330 LAURIER ANENUE EAST
OTTAWA, ON

Title
LANDSCAPE PLAN

Project No. 160401789
Drawing No. 1 of 7
Scale 1:100
Sheet 1 of 7
Revision 10
PLANT NUMBER: 19193

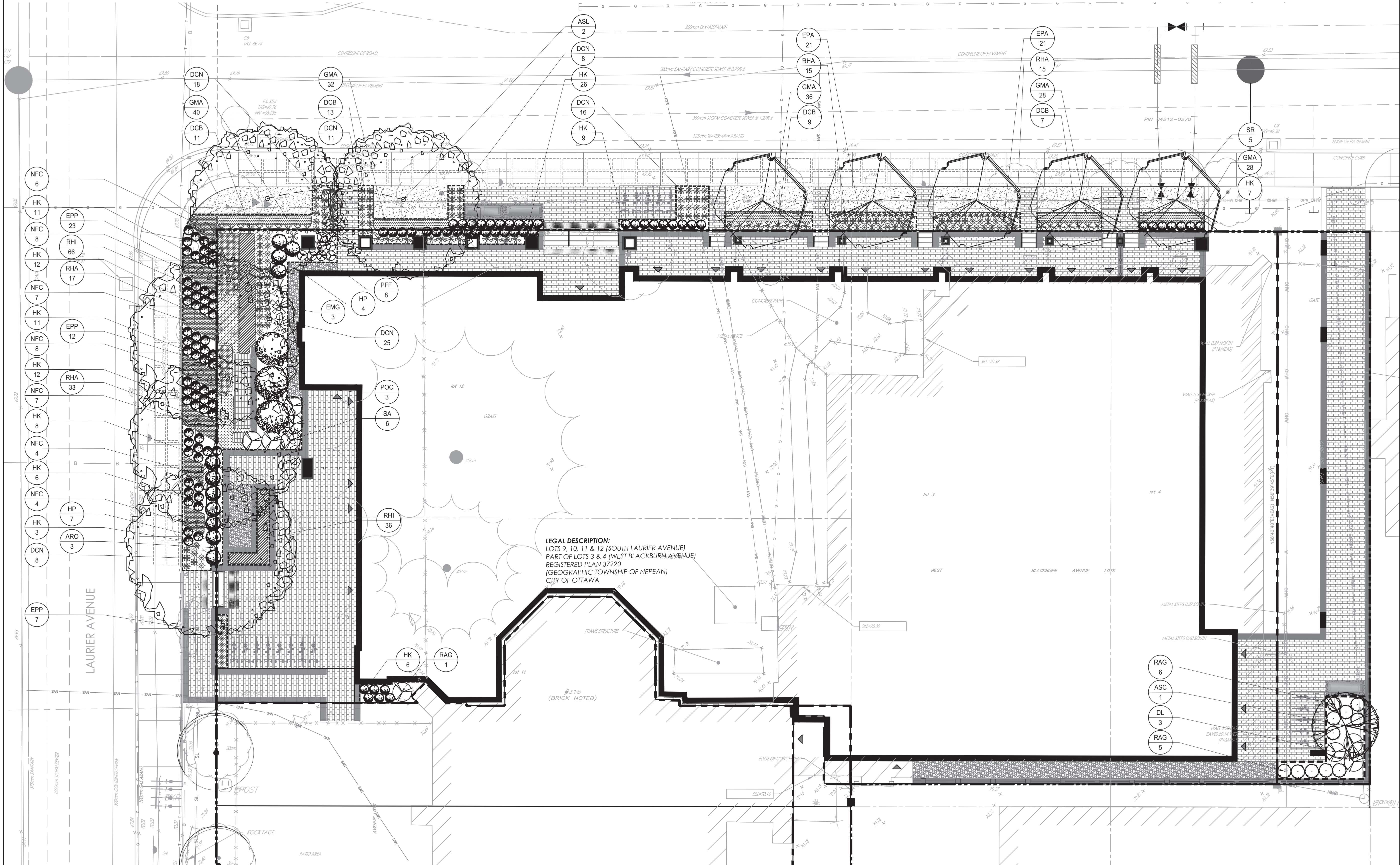


PLANTING SCHEDULE (CITY OWNERSHIP) - L101

QUANTITY	KEY	BOTANICAL NAME	COMMON NAME	SIZE AT PLANTING	NATIVE / NON-NATIVE	REMARKS
DECIDUOUS TREES - REFER TO DETAIL 1/L602						
3	ARO	<i>Acer rubrum</i> 'October Glory'	October Glory Red Maple	60mm (cal.)	Native	W.B.
5	SR	<i>Syringa reticulata</i>	Japanese Tree Lilac	60mm (cal.)	Adapted	W.B.
2	ASL	<i>Acer saccharum</i> 'Legacy'	Legacy Sugar Maple	60mm (cal.)	Native	W.B.
DECIDUOUS SHRUBS - REFER TO DETAIL 3/L602						
88	HK	<i>Hypericum kalmianum</i>	Pot O'Gold	2 Gallon	Native	Potted; Plant at 500mm o.c.
7	HP	<i>Hypericum prolificum</i>	Shrubby St. John's Wort	400mm (ht.)	Native	Potted; Plant at 800mm o.c.
PERENNIALS & ORNAMENTAL GRASSES - REFER TO DETAIL 5/L602						
26	DCB	<i>Deschampsia cespitosa</i> 'Bronze Veil'	Bronze Tufted Hair Grass	1 Gallon	Native	Potted; Plant at 500mm o.c.
59	DCN	<i>Deschampsia cespitosa</i> 'Northern Lights'	Variegated Tufted Hair Grass	1 Gallon	Native	Potted; Plant at 400mm o.c.
42	EPA	<i>Echinacea pallida</i>	Pale Purple Coneflower	1 Gallon	Native	Potted; Plant at 500mm o.c.
164	GMA	<i>Geranium maculatum</i>	Wild Geranium	1 Gallon	Native	Potted; Plant at 250mm o.c.
44	NFC	<i>Nepeta faassenii</i> 'Cat's Meow'	Catmint	1 Gallon	Native	Potted; Plant at 500mm o.c.
30	RHA	<i>Rudbeckia hirta</i> 'Autumn Colours'	Autumn Colours Gloriosa Daisy	1 Gallon	Native	Potted; Plant at 300mm o.c.

PLANTING SCHEDULE (PRIVATE OWNERSHIP) - L101

QUANTITY	KEY	BOTANICAL NAME	COMMON NAME	SIZE AT PLANTING	NATIVE / NON-NATIVE	REMARKS
DECIDUOUS TREES - REFER TO DETAIL 1/L602						
1	ASC	<i>Acer saccharum</i> 'Columnare'	Columnar Sugar Maple	60mm (cal.)	Native	W.B.
DECIDUOUS SHRUBS - REFER TO DETAIL 4/L602						
3	DL	<i>Diervilla lonicera</i>	Bush Honeysuckle	500mm (ht.)	Native	Potted; Plant at 1000mm o.c.
23	HK	<i>Hypericum kalmianum</i>	Pot O'Gold	2 Gallon	Native	Potted; Plant at 500mm o.c.
4	HP	<i>Hypericum prolificum</i>	Shrubby St. John's Wort	400mm (ht.)	Native	Potted; Plant at 800mm o.c.
8	PFF	<i>Potentilla fruticosa</i> 'Farrerii'	Golddrop cinquefoil	2 Gallon	Native	Potted; Plant at 500mm o.c.
3	POC	<i>Physocarpus opulifolius</i> 'Center Glow'	Center Glow Ninebark	500mm (ht.)	Native	Potted; Plant at 1750mm o.c.
12	RAG	<i>Rhus aromatica</i> 'Gro-Low'	Gro-Low Fragrant Sumac	500mm (ht.)	Native	Potted; Plant at 750mm o.c.
6	SA	<i>Symphoricarpus albus</i>	Snowberry	3 Gallon	Native	Potted; Plant at 1000mm o.c.
PERENNIALS & ORNAMENTAL GRASSES - REFER TO DETAIL 6/L602						
14	DCB	<i>Deschampsia cespitosa</i> 'Bronze Veil'	Bronze Tufted Hair Grass	1 Gallon	Native	Potted; Plant at 500mm o.c.
27	DCN	<i>Deschampsia cespitosa</i> 'Northern Lights'	Variegated Tufted Hair Grass	1 Gallon	Native	Potted; Plant at 400mm o.c.
3	EMG	<i>Eupatorium maculatum</i> 'Gateway'	Joe Pye Weed	1 Gallon	Native	Potted; Plant at 1000mm o.c.
42	EPP	<i>Echinacea purpurea</i> 'Prairie Splendor'	Prairie Splendor Coneflower	1 Gallon	Native	Potted; Plant at 400mm o.c.
50	RHA	<i>Rudbeckia hirta</i> 'Autumn Colours'	Autumn Colours Gloriosa Daisy	1 Gallon	Native	Potted; Plant at 300mm o.c.
102	RHI	<i>Rudbeckia hirta</i>	Gloriosa Daisy	1 Gallon	Native	Potted; Plant at 300mm o.c.



Stantec Consulting Ltd.
 300 - 1331 Clyde Avenue
 Ottawa ON
 Tel. 613.722.4420
 www.stantec.com

Copyright Reserved

The Contractor shall verify and be responsible for all dimensions. DO NOT scale the drawing - any errors or omissions shall be reported to Stantec without delay.
 The Copyrights to all designs and drawings are the property of Stantec. Reproduction or use for any purpose other than that authorized by Stantec is forbidden.

Legend

- EXISTING TREE
- DECIDUOUS TREE
- DECIDUOUS SHRUBS
- CONIFEROUS & BROADLEAF SHRUBS
- PERENNIALS & ORNAMENTAL GRASSES
- PLANTING BED
- SOD
- SIDEWALK WITH SOIL CELLS
- PROPERTY LINE

Notes

10	ISSUED FOR CITY REVIEW	TA	KP	25.02.26
9	ISSUED FOR 'CLASS B' BUDGET	TA	KP	25.01.08
8	ISSUED FOR CITY REVIEW	TA	KP	24.12.12
7	ISSUED FOR SUSTAINABILITY REVIEW	TA	KP	24.10.25
6	ISSUED FOR CITY REVIEW	TA	KP	24.09.23
Revision		By	Appd.	YY.MM.DD
File Name: 160410406		CA	KP	23.04.25
Permit-Seal		Dwn.	Chkd.	Y.Y.MM.DD



Client/Project

ALL SAINTS DEVELOPMENT LP

WINDMILL
 330 LAURIER ANENUE EAST
 OTTAWA, ON

Title

PLANTING PLAN

Project No.	Scale	0 1 3 5m
160401789	1:100	
Drawing No.	Sheet	Revision
L101	2 of 7	10

SOIL VOLUME CALCULATION SCHEDULE			
TREE TYPE/SIZE	SINGLE TREE VOLUME REQUIRED (m3)	MULTIPLE TREE VOLUME REQUIRED (m3/TREE)	ACTUAL TREE SOIL VOLUME (m3/TREE)
BLACKBURN AVE 7x (LARGE/MEDIUM)	-	15 (x5) & 18 (x2)	21.5
LAURIER AVE 3x (LARGE)	-	18	24.7
COLUMNAR 1x	15	-	15.3



Stantec Consulting Ltd.
300 - 1331 Clyde Avenue
Ottawa ON
Tel. 613.722.4420
www.stantec.com

Copyright Reserved

The Contractor shall verify and be responsible for all dimensions. DO NOT scale the drawing - any errors or omissions shall be reported to Stantec without delay.
The Copyrights to all designs and drawings are the property of Stantec. Reproduction or use for any purpose other than that authorized by Stantec is forbidden.

Legend

- EXISTING TREE
- LARGE DECIDUOUS TREE
- MEDIUM DECIDUOUS TREE
- COLUMNAR DECIDUOUS TREE
- PLANTING BED
- SOD
- SIDEWALK WITH SOIL CELLS
- BENCH
- STONE RETAINING WALL MAX. 900mm ht.
- LOW LANDSCAPE STONE WALL MAX. 500mm ht.
- PRIVACY SCREEN
- ARCHITECTURAL FENCE
- VENTILATION GRATE
- RIVERWASHED STONES
- CONCRETE RETAINING WALL
- CONCRETE CURB
- UNIT PAVERS
- BIKE RACK
- 150mm X150mm AREA DRAIN
- WALL-MOUNTED LIGHT
- PROPERTY LINE

Notes

3	ISSUED FOR CITY REVIEW	TA	KP	25.02.26
2	ISSUED FOR 'CLASS B' BUDGET	TA	KP	25.01.08
1	ISSUED FOR CITY REVIEW	TA	KP	24.12.12
Revision		By	Appd.	YY.MM.DD
File Name: 160410406		CA	KP	23.04.25
Permit-Seal		Dwn.	Chkd.	Dsgn.



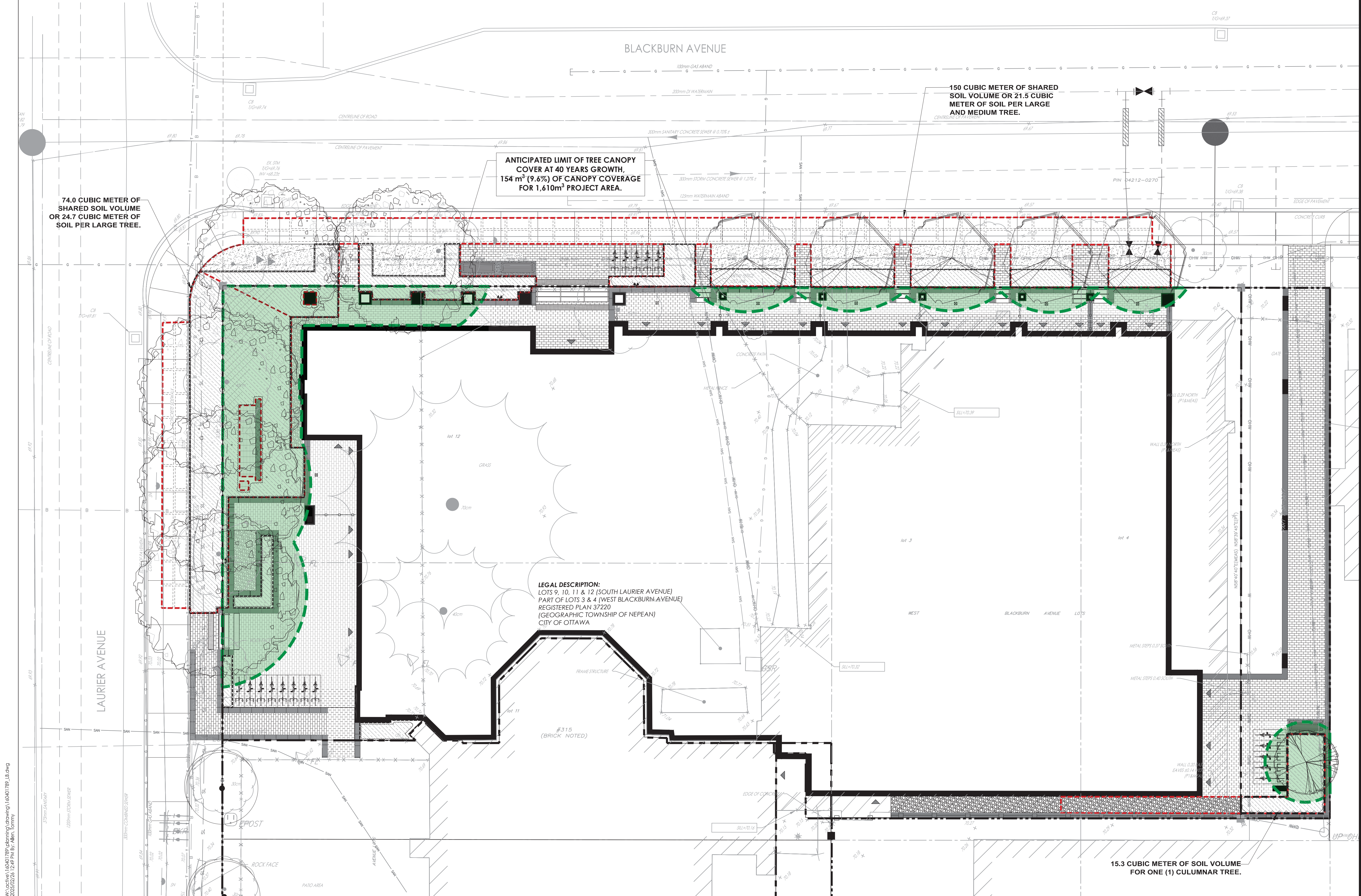
Client/Project
ALL SAINTS DEVELOPMENT LP

WINDMILL
330 LAURIER AVENUE EAST
OTTAWA, ON

Title
TREE CANOPY AND SOIL VOLUME

Project No. 16041789	Scale 1:100
Drawing No. L102	Sheet 3 of 7
	Revision 3

PLAN NUMBER: 19193



W:\active\16041789\planning\drawing\16041789_L102.dwg
2025/02/26 12:48 PM by: Allen, Barry

ORIGINAL SHEET - ARCH-D

PLANTING SCHEDULE (PRIVATE OWNERSHIP) - L200

QUANTITY	KEY	BOTANICAL NAME	COMMON NAME	SIZE AT PLANTING	NATIVE / NON-NATIVE	REMARKS
ORNAMENTAL GRASSES - REFER TO DETAIL 6/L602						
10	PVC	<i>Panicum virgatum "Cheyenne Sky"</i>	Cheyenne Sky Switchgrass	1 Gallon	Native	Potted; Plant at 500mm o.c.
GREENROOF PERENNIALS - REFER TO DETAIL 2/L602						
78.5 Sqm	M1	<i>Sedum spp.</i>	Stonecrop	Plug	Native	80% red colour sedum
120.2 Sqm	M2	<i>Sedum spp.</i>	Stonecrop	Plug	Native	70% purple colour sedum
35.5 Sqm	M3	<i>Sedum spp.</i>	Stonecrop	Plug	Native	80% yellow colour sedum
115 Sqm	M4	<i>Sedum spp.</i>	Stonecrop	Plug	Native	80% green colour sedum



Stantec Consulting Ltd.
300 - 1331 Clyde Avenue
Ottawa ON
Tel. 613.722.4420
www.stantec.com

Copyright Reserved

The Contractor shall verify and be responsible for all dimensions. DO NOT scale the drawing - any errors or omissions shall be reported to Stantec without delay.
The Copyrights to all designs and drawings are the property of Stantec. Reproduction or use for any purpose other than that authorized by Stantec is forbidden.

Legend

	PLANT MIX 1
	PLANT MIX 2
	PLANT MIX 3
	PLANT MIX 4
	ORNAMENTAL GRASSES
	PAVERS TYPE 2

Notes

10	ISSUED FOR CITY REVIEW	1A	KP	25.02.26	
9	ISSUED FOR 'CLASS B' BUDGET	1A	KP	25.01.08	
8	ISSUED FOR CITY REVIEW	1A	KP	24.12.12	
7	ISSUED FOR SUSTAINABILITY REVIEW	1A	KP	24.10.23	
6	ISSUED FOR CITY REVIEW	1A	KP	24.09.23	
Revision		By	Appd.	YY.MM.DD	
File Name: 160410406		CA	KP	23.04.25	
		Dwn.	Chkd.	Dsgn.	YY.MM.DD

Permit-Seal



Client/Project

ALL SAINTS DEVELOPMENT LP

WINDMILL
330 LAURIER ANENUE EAST
OTTAWA, ON

Title

GREEN ROOF
LANDSCAPE PLAN

Project No.
160401789

Scale
1:75
0 750 2250 3750mm

Drawing No.

Sheet

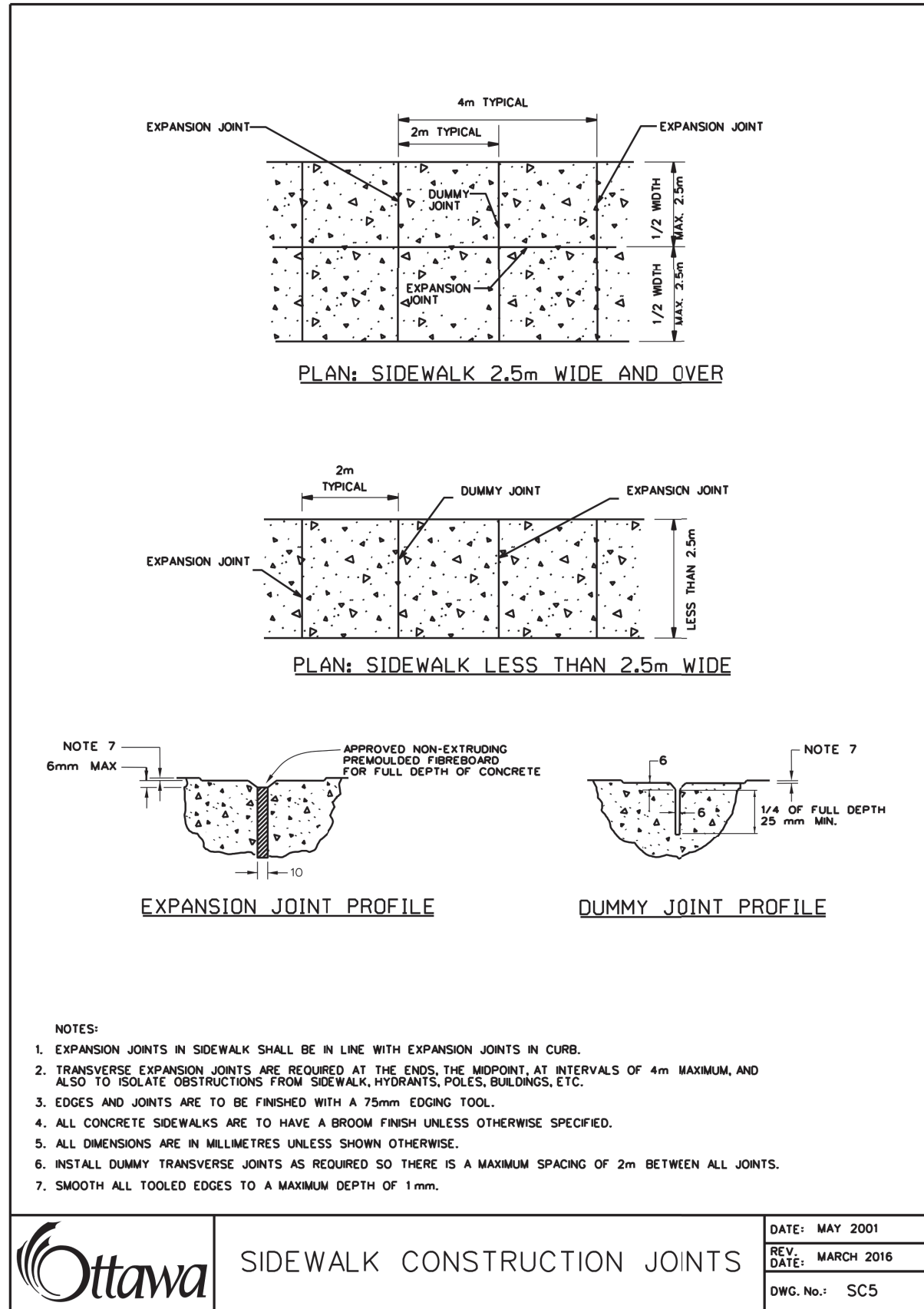
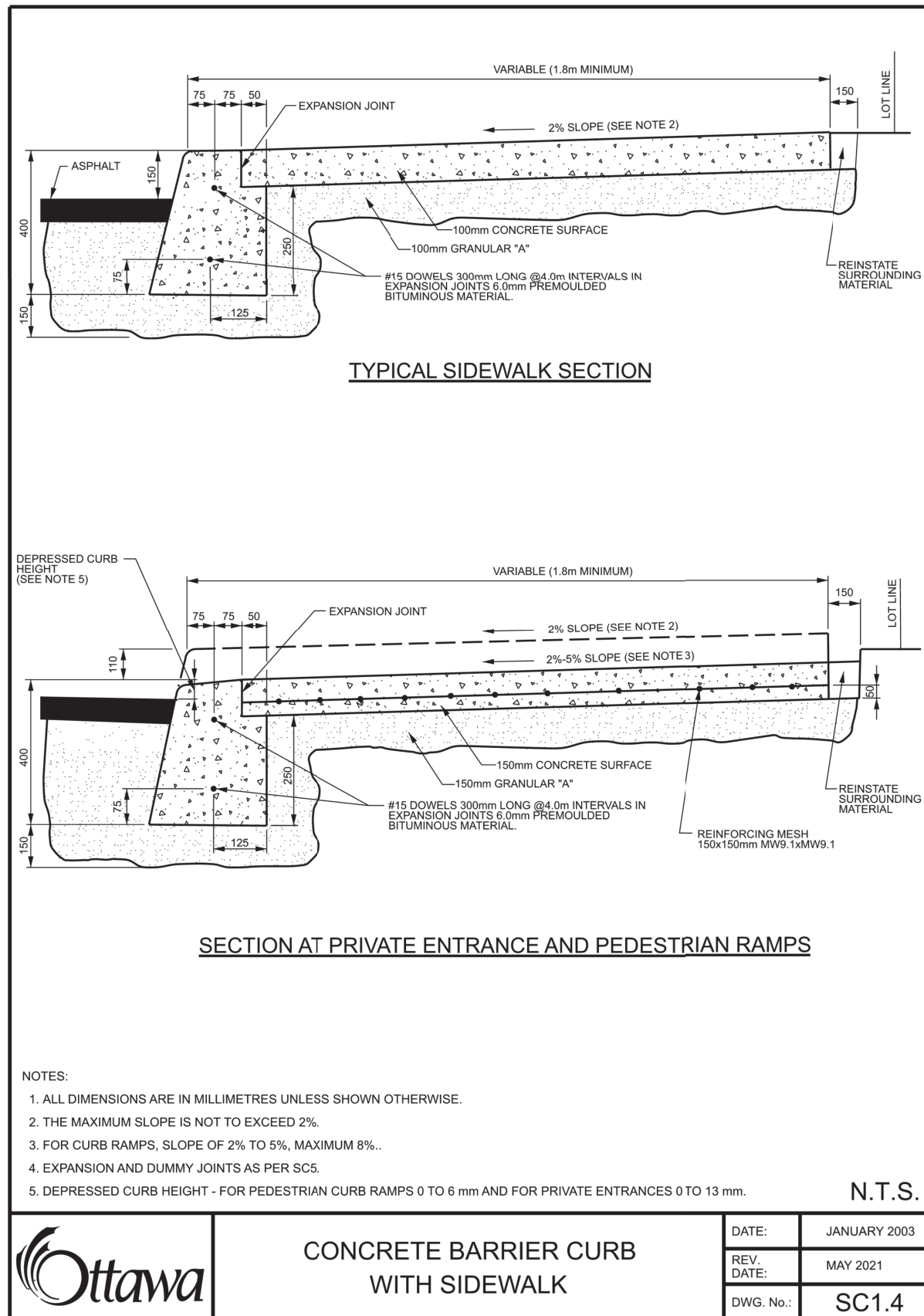
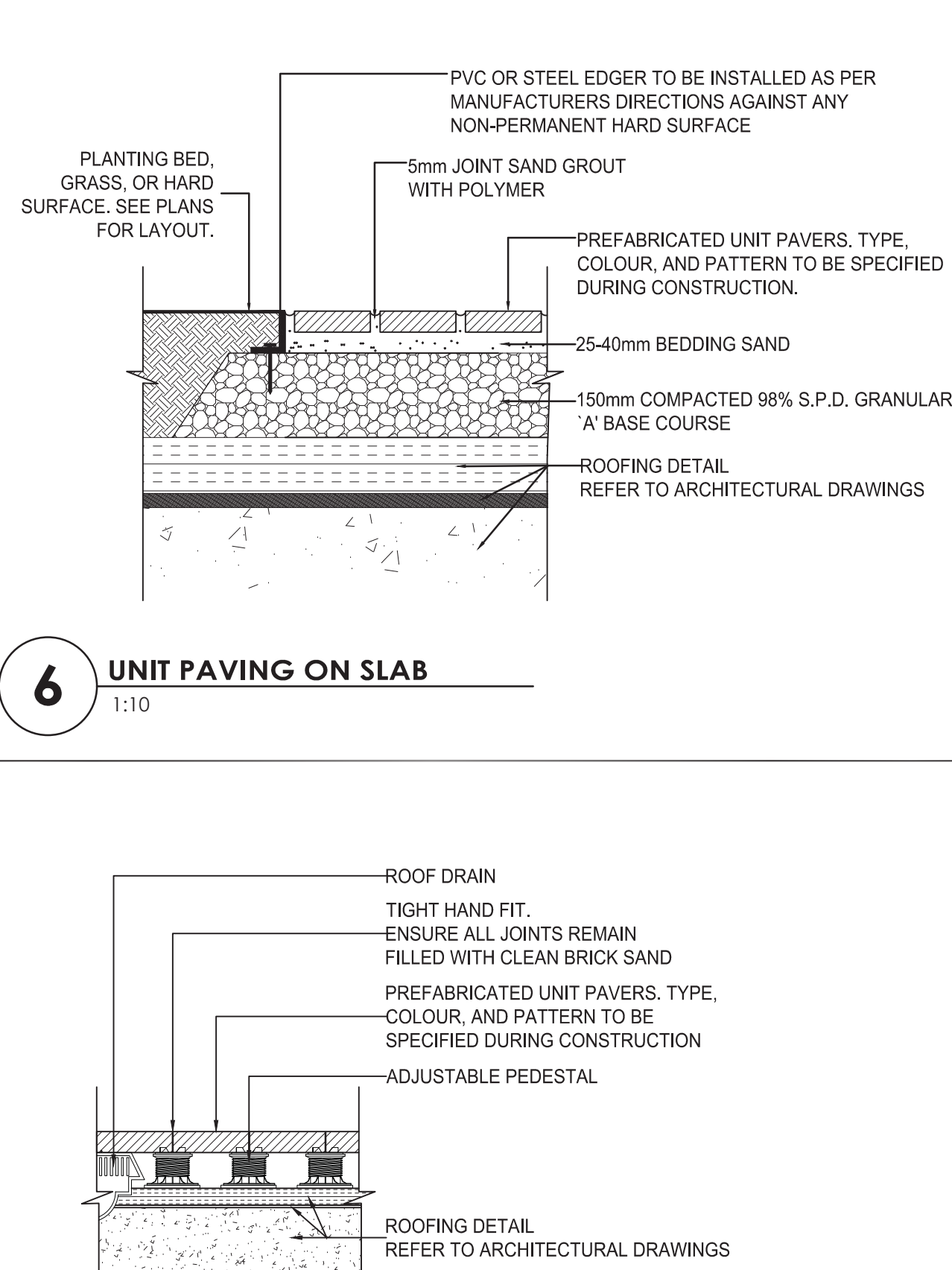
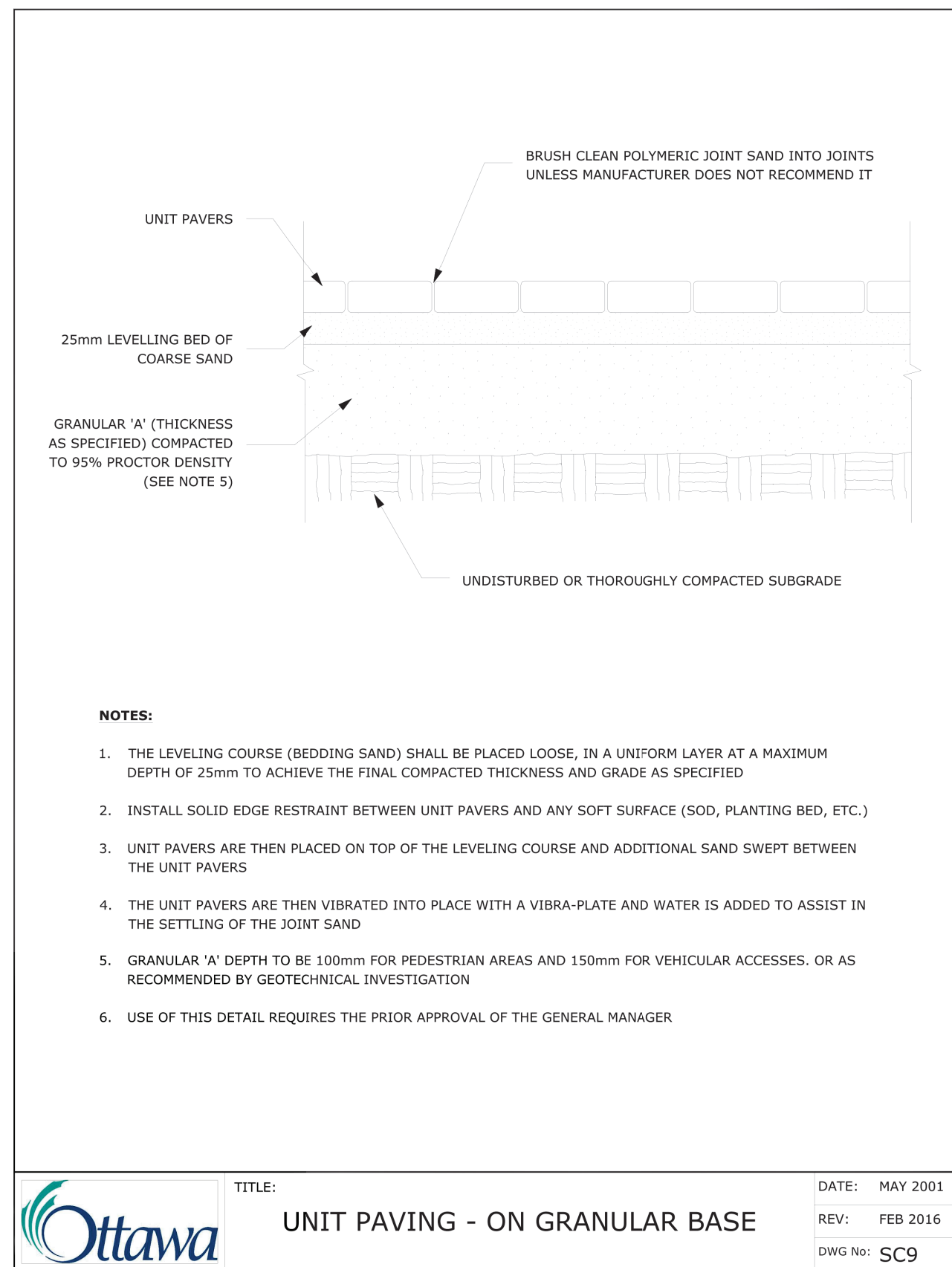
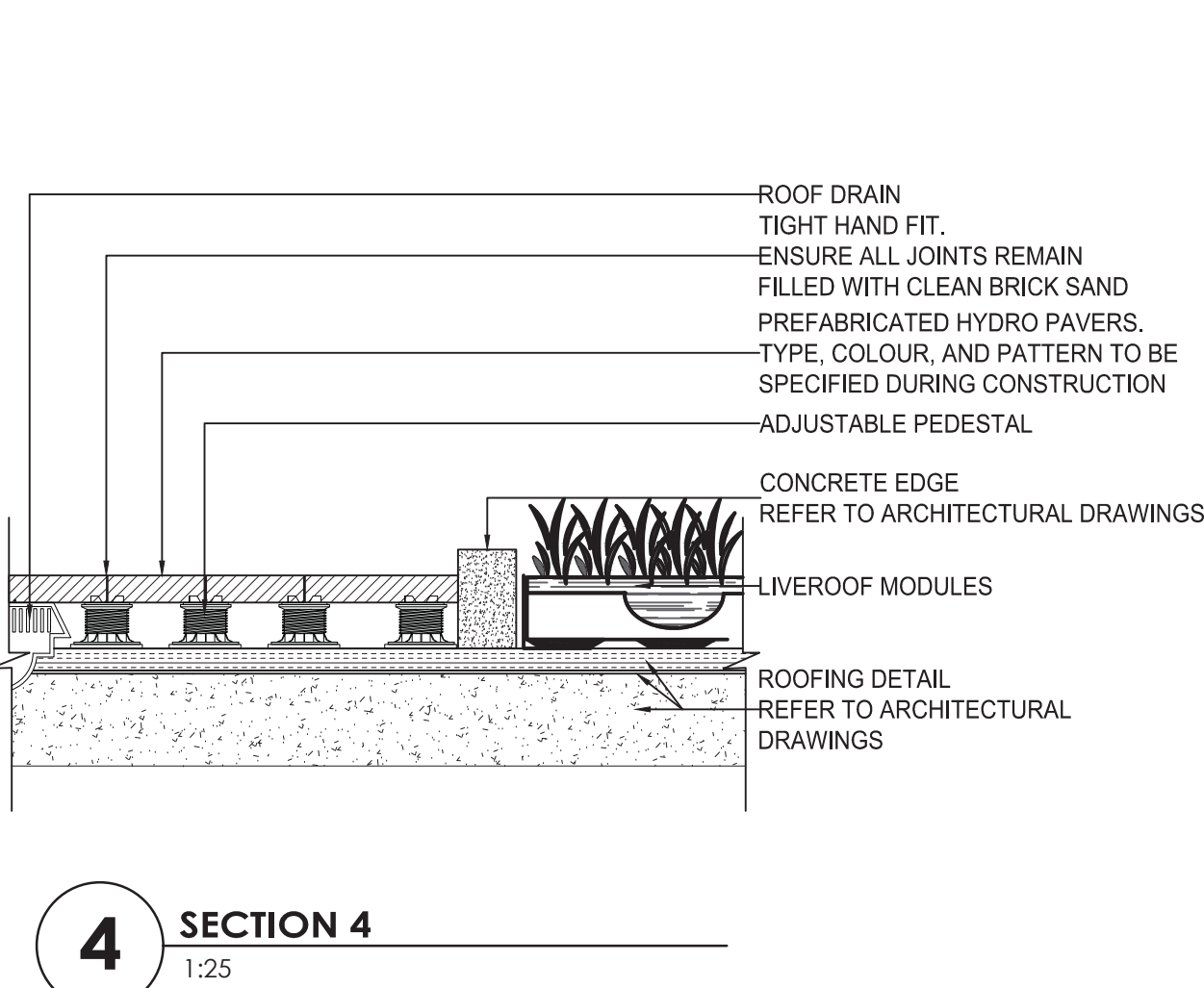
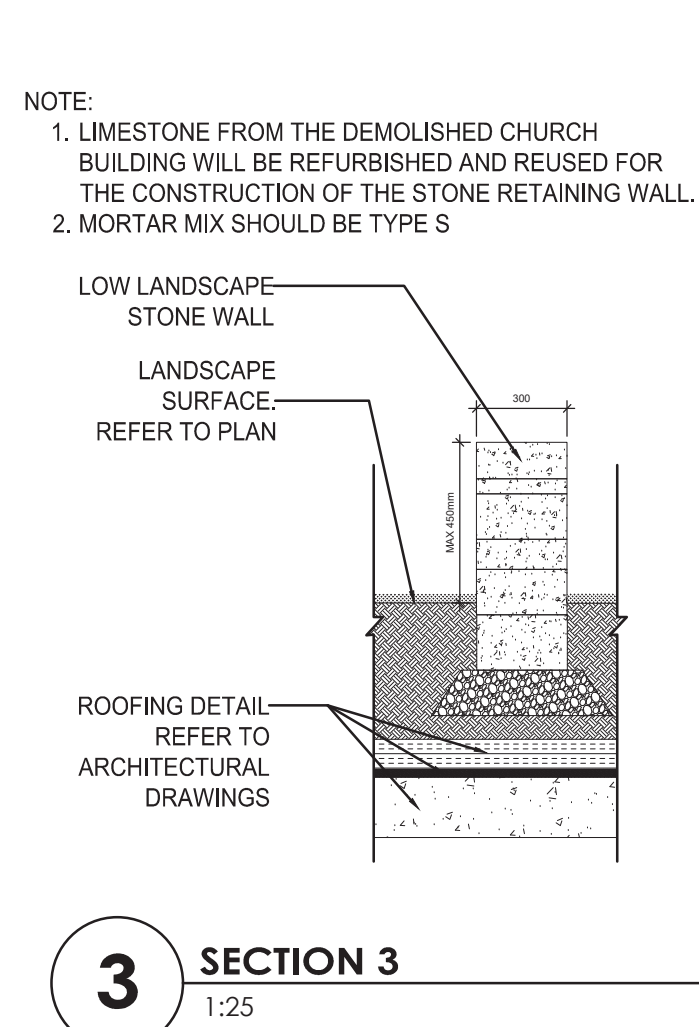
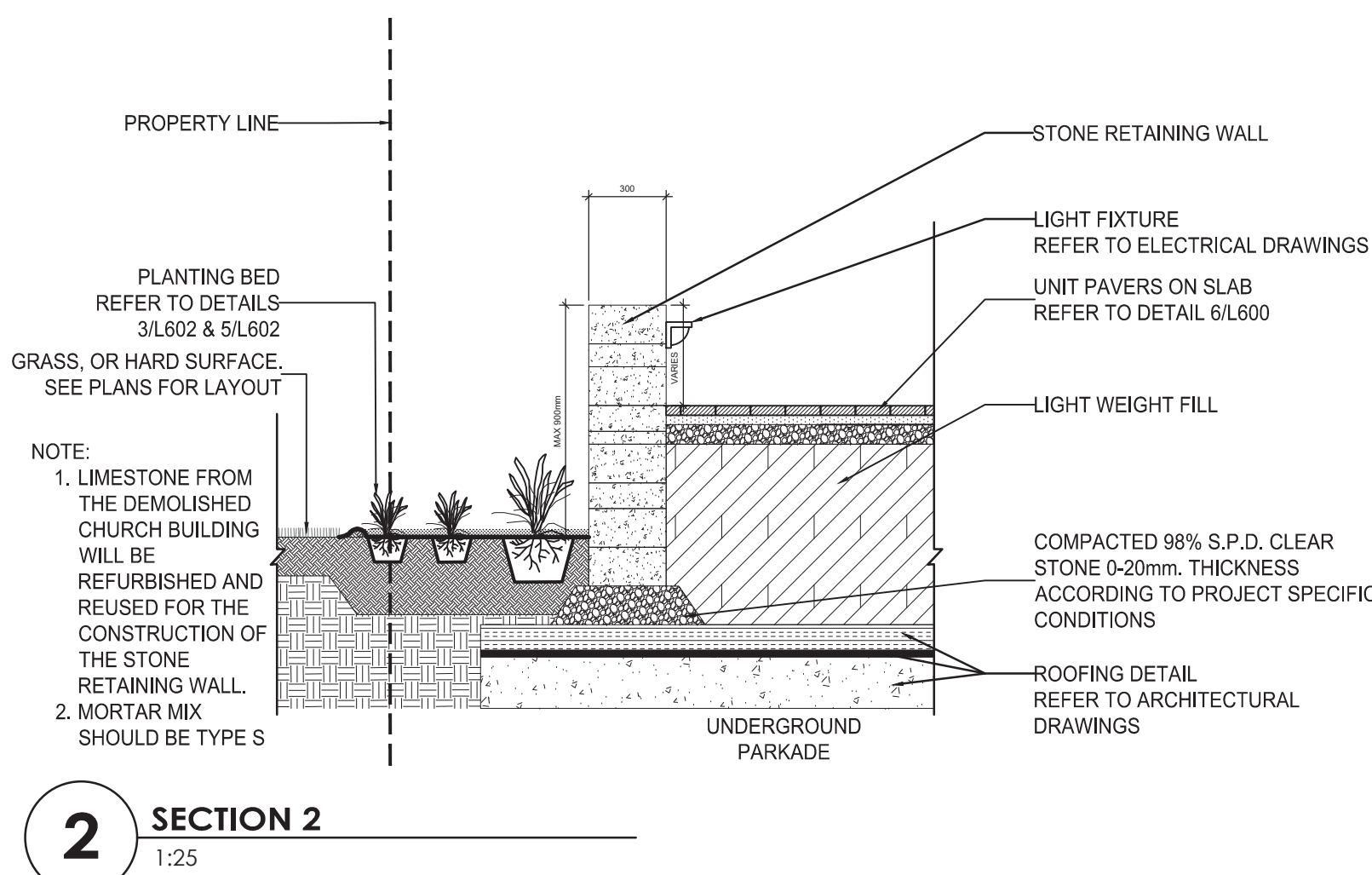
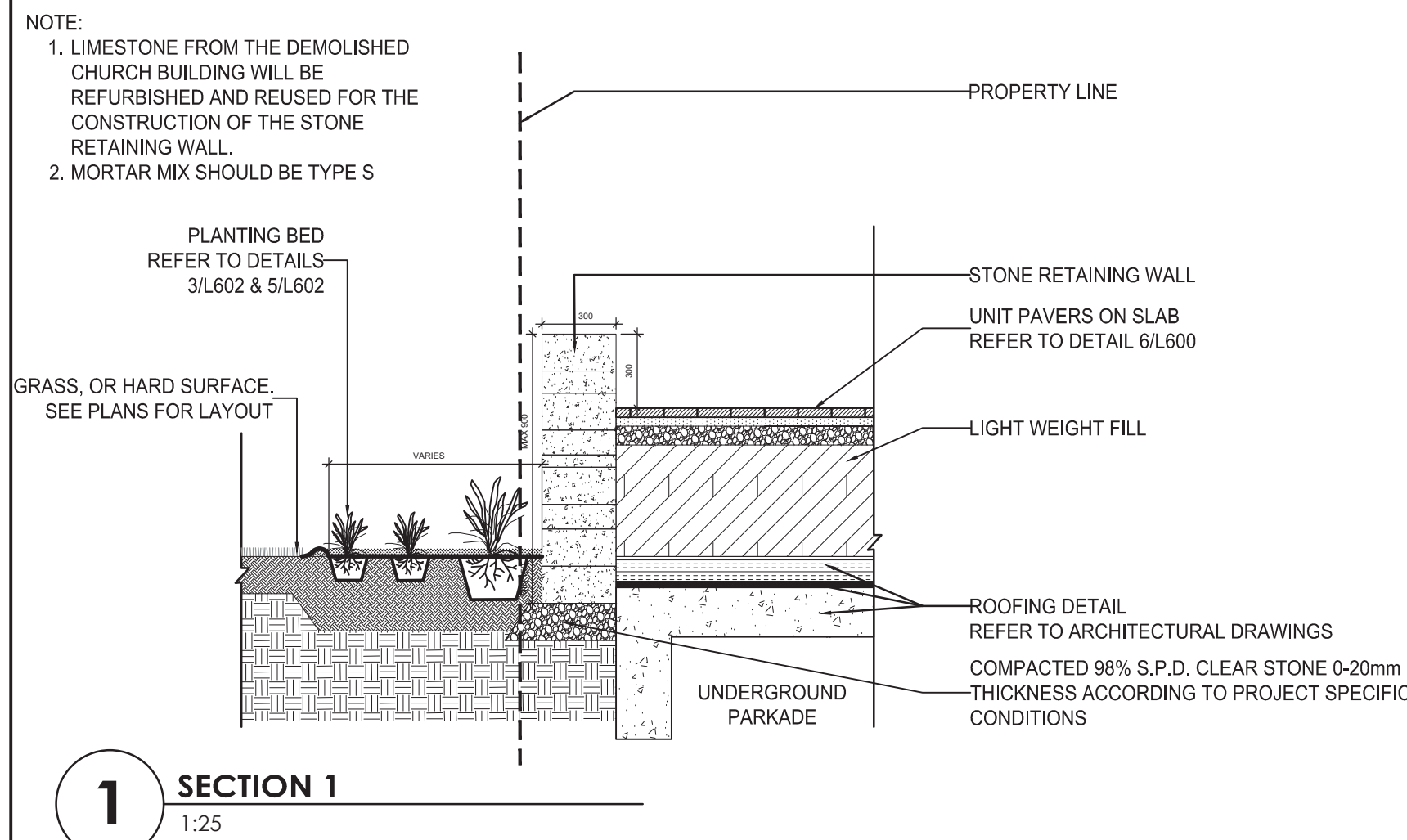
Revision

L200

4 of 7

10

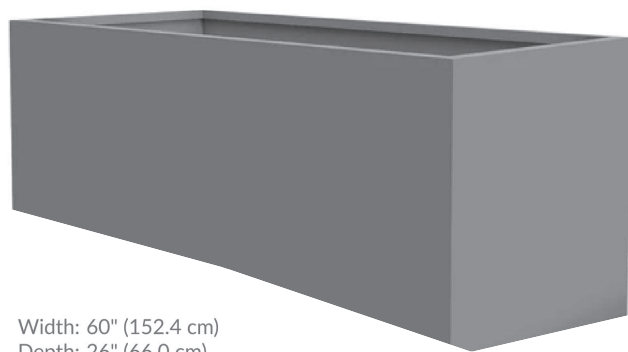
PLAN NUMBER: 19193



5	ISSUED FOR CITY REVIEW	TA	KP	24.12.12
4	ISSUED FOR CITY REVIEW	TA	KP	24.09.23
3	ISSUED FOR CITY REVIEW	TA	KP	24.05.24
7	ISSUED FOR CITY REVIEW	TA	KP	25.02.24
6	ISSUED FOR 'CLASS B' BUDGET	TA	KP	25.01.08

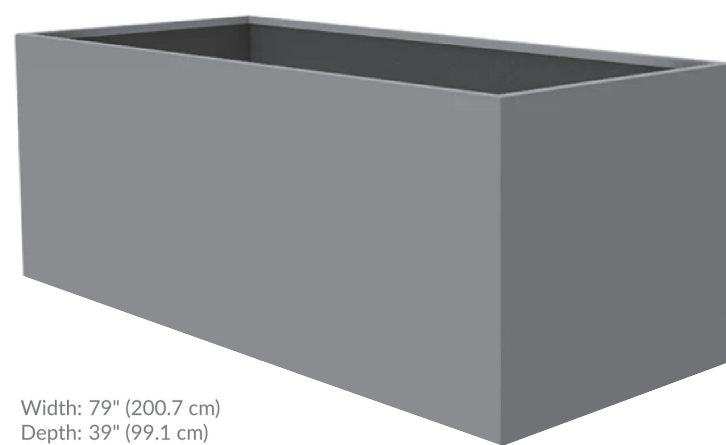
Revision		By	Appd.	YY.MM.DD
File Name: 160410406	CA	KP	KP	23.04.25
	Dwn.	Chkd.	Dsgn.	YY.MM.DD

26" X 60" Urban Aluminum Planter
PS-210-AL-PO-26x60x26 - Urban Aluminum Planter



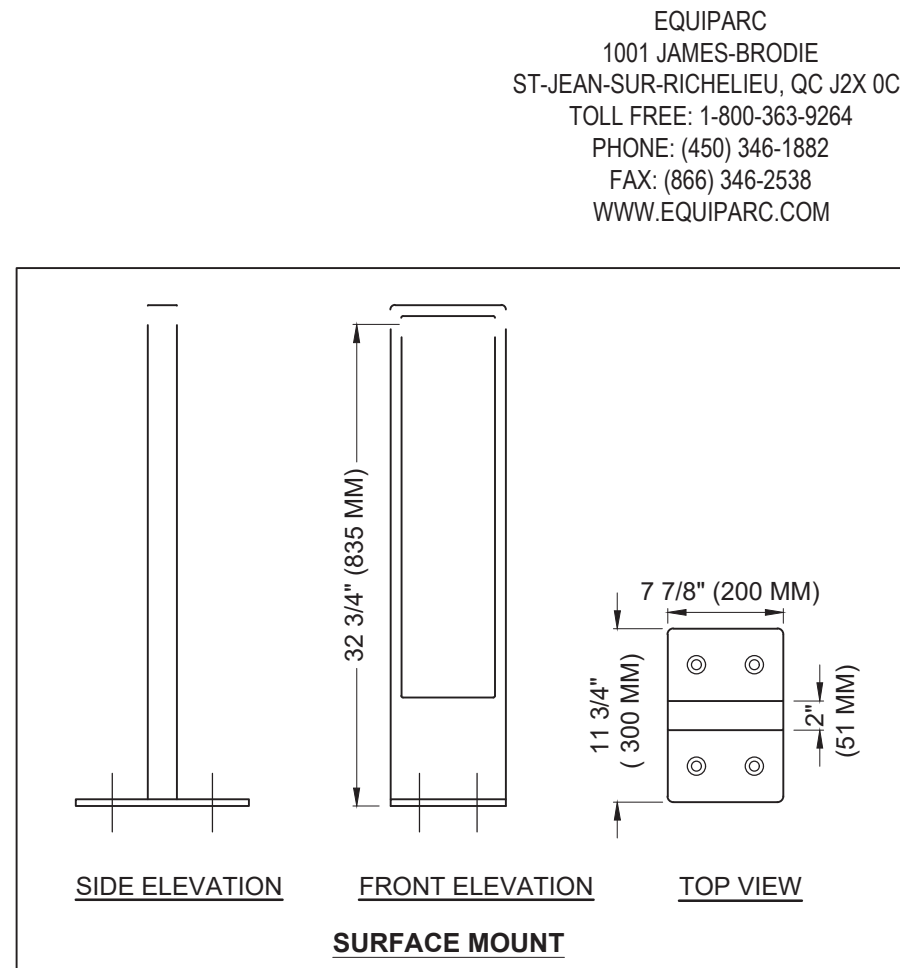
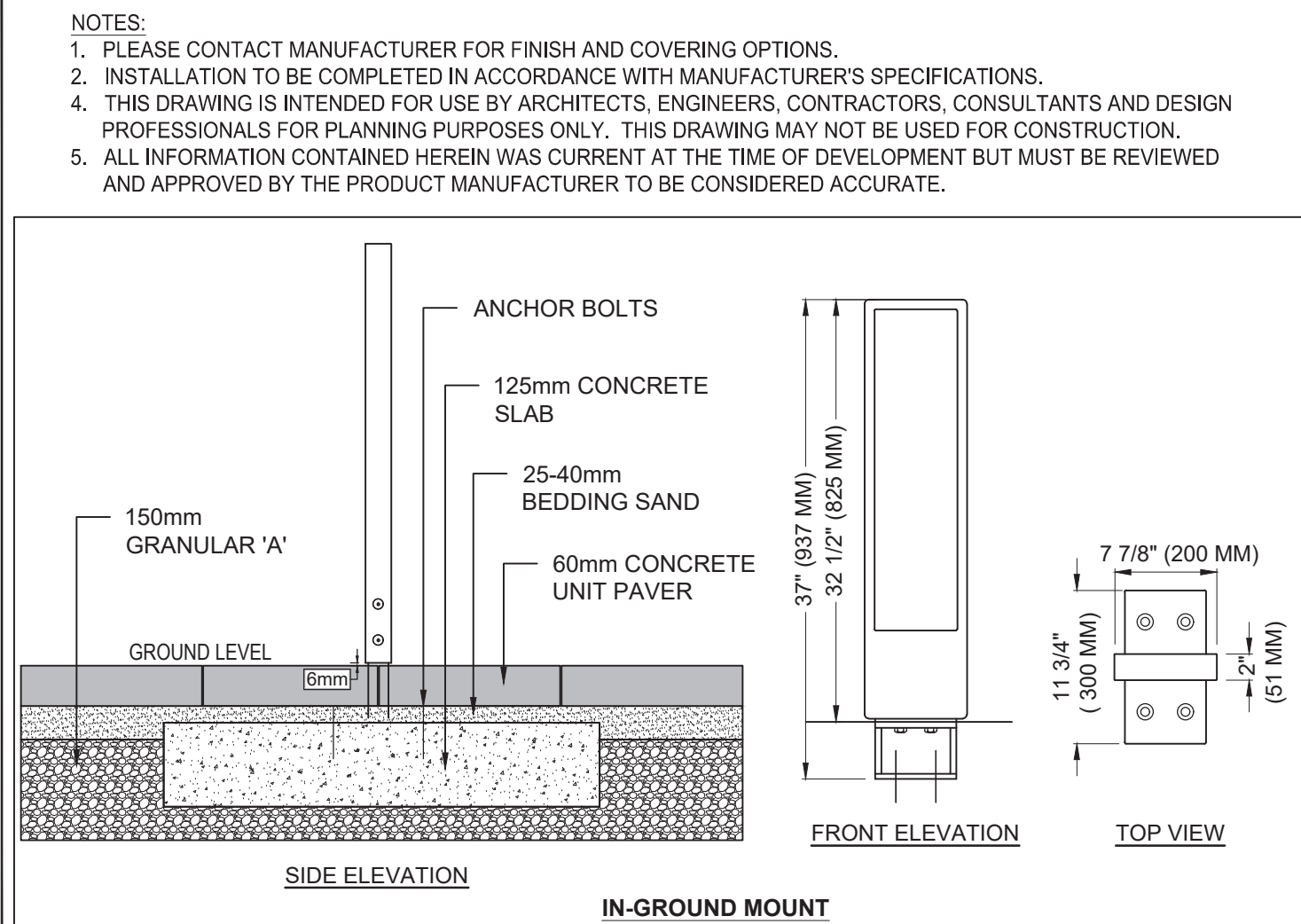
Width: 60" (152.4 cm)
Depth: 26" (66.0 cm)
Height: 26" (66.0 cm)

39" X 79" Urban Aluminum Planter
PS-210-AL-PO-39x79x39 - Urban Aluminum Planter

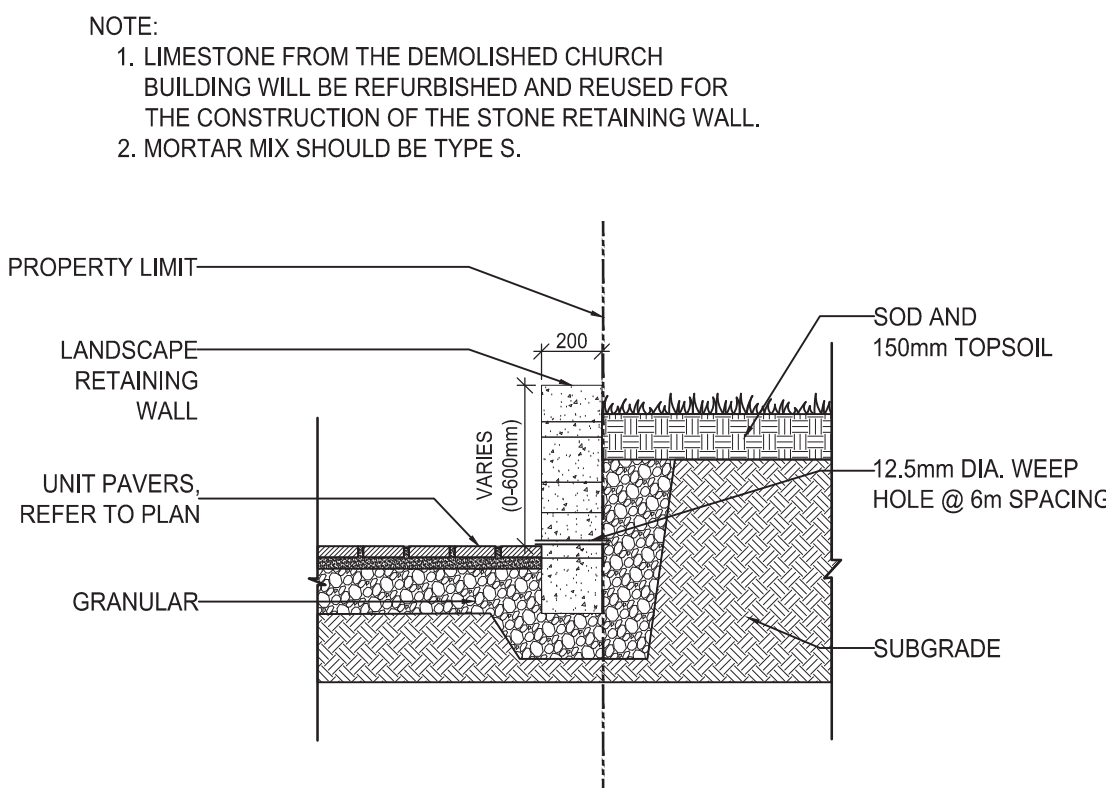


Width: 79" (200.7 cm)
Depth: 39" (99.1 cm)
Height: 39" (99.1 cm)
Weight: 680.0 lb (308.7 kg)

- NOTES:**
1. PLANTERS TO BE 'URBAN ALUMINUM PLANTERS' BY HAUSER OR APPROVED EQUIVALENT.
 2. HAUSER CONTACT:
TEL: 519-747-1138
EMAIL: sales@hausersite.com
 3. LAYOUT AND SIZE AS INDICATED ON LANDSCAPE PLAN.
 4. SLATE BLACK.
 5. SHOP DRAWINGS OF PLANTERS TO BE PROVIDED FOR APPROVAL BY LANDSCAPE ARCHITECT PRIOR TO PLACE ORDER



EQUIPARC
1001 JAMES-BRODIE
ST-JEAN-SUR-RICHELIEU, QC J2X 0C1
TOLL FREE: 1-800-363-9264
PHONE: (450) 346-1882
FAX: (866) 346-2538
WWW.EQUIPARC.COM



Client/Project
ALL SAINTS DEVELOPMENT LP

WINDMILL
330 LAURIER AVENUE EAST
OTTAWA, ON

Title
LANDSCAPE DETAILS & NOTES - I

Project No. 160401789	Scale AS NOTED	
Drawing No.	Sheet	Revision

L600

5 of 7

7

PLAN NUMBER: 19193

KEY PLAN

- (A) SILVA CELL SYSTEM (DECK, BASE, AND POSTS)
- (B) SUBGRADE, COMPACTED
- (C) GEOTEXTILE FABRIC, PLACED ABOVE SUBGRADE
- (D) 100 MM MIN AGGREGATE SUB BASE, COMPACTED TO 95% PROCTOR
- (E) SILVA CELL BASE SLOPE, 10% MAX
- (F) 25 TO 150 MM SPACING BETWEEN SILVA CELLS AT BASE
- (G) ANCHORING SPIKES - CONTACT DEEPROOT FOR ALTERNATIVE
- (H) GEOGRID, WRAPPED AROUND PERIMETER OF SYSTEM, WITH 150 MM TOE (OUTWARD FROM BASE) AND 300 MM EXCESS (OVER TOP OF DECK)
- (I) CABLE TIE, ATTACHING GEOGRID TO SILVA CELL AT BASE OF UPPER LEG FLARE, AS NEEDED

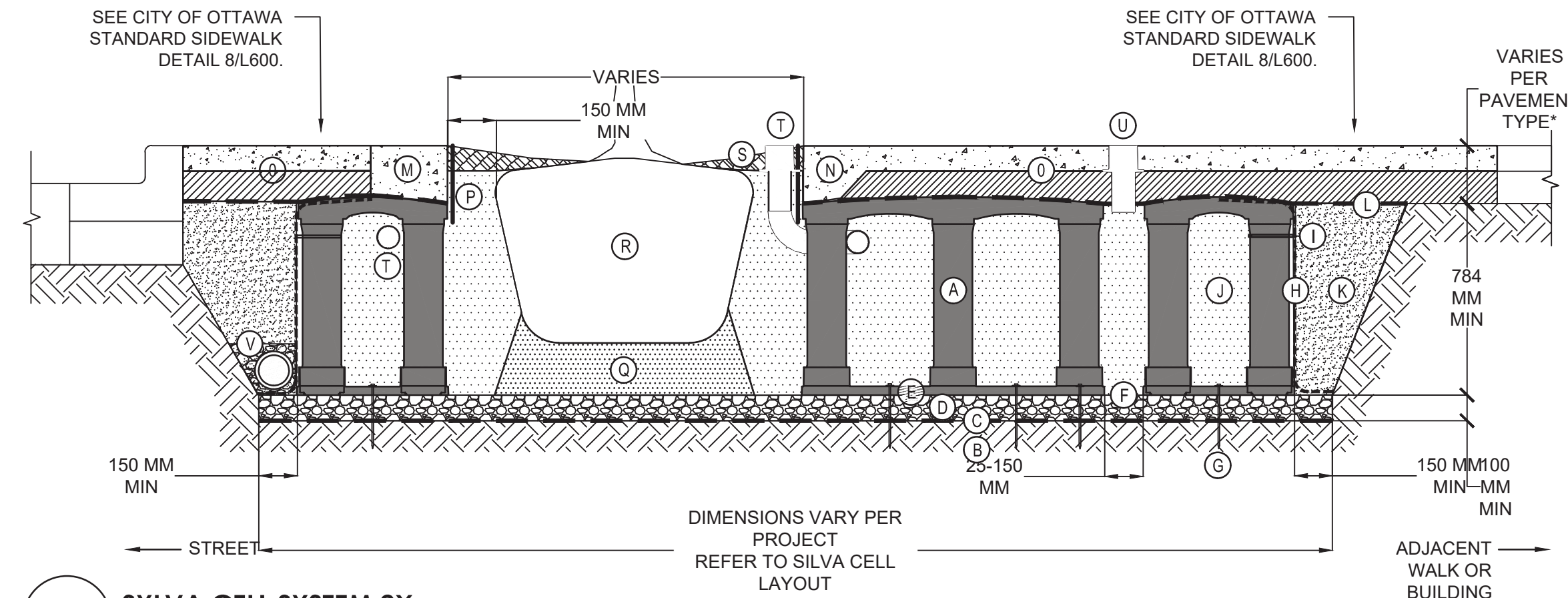
- (J) PLANTING SOIL, PER PROJECT SPECIFICATIONS, PLACED IN LIFTS AND WALK-IN COMPACTED TO 75-85% PROCTOR
- (K) COMPACTED BACKFILL, PER PROJECT SPECIFICATIONS
- (L) GEOTEXTILE FABRIC TO EDGE OF EXCAVATION
- (M) RIBBON CURB AT TREE OPENING (TO BE USED WITH PAVERS OR ASPHALT)
- (N) THICK PAVEMENT EDGE AT TREE OPENING (TO BE USED WITH CONCRETE)
- (O) SEE CITY OF OTTAWA STANDARD SIDEWALK DETAIL 8/L600.

- (P) DEEPROOT ROOT BARRIER, 300 OR 450 MM, DEPTH DETERMINED BY THICKNESS OF PAVEMENT SECTION, INSTALL DIRECTLY ADJACENT TO CONCRETE EDGE RESTRAINT
- (Q) PLANTING SOIL BELOW ROOT BALL, COMPACTED WELL TO PREVENT SETTLING
- (R) ROOT BALL
- (S) TREE OPENING TREATMENT, PER PROJECT SPECIFICATIONS
- (T) DEEPROOT WATER AND AIR VENT-ROOTBALL, WHEN REQUIRED

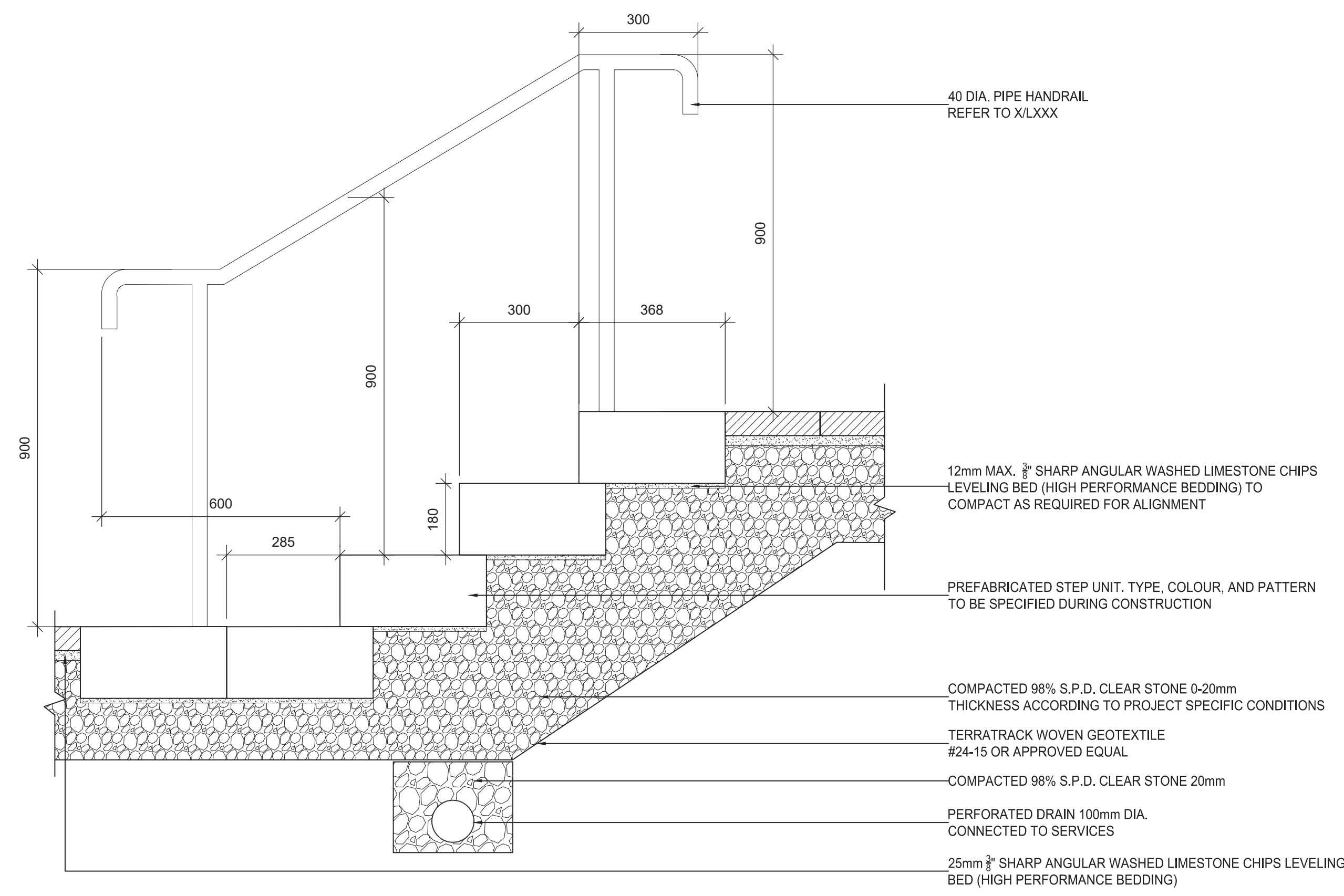
- (U) DEEPROOT WATER AND AIR VENT, WHEN REQUIRED
- (V) UNDERDRAIN SYSTEM, WHEN REQUIRED (LOCATION AND DETAILS BY OTHERS)

NOTES

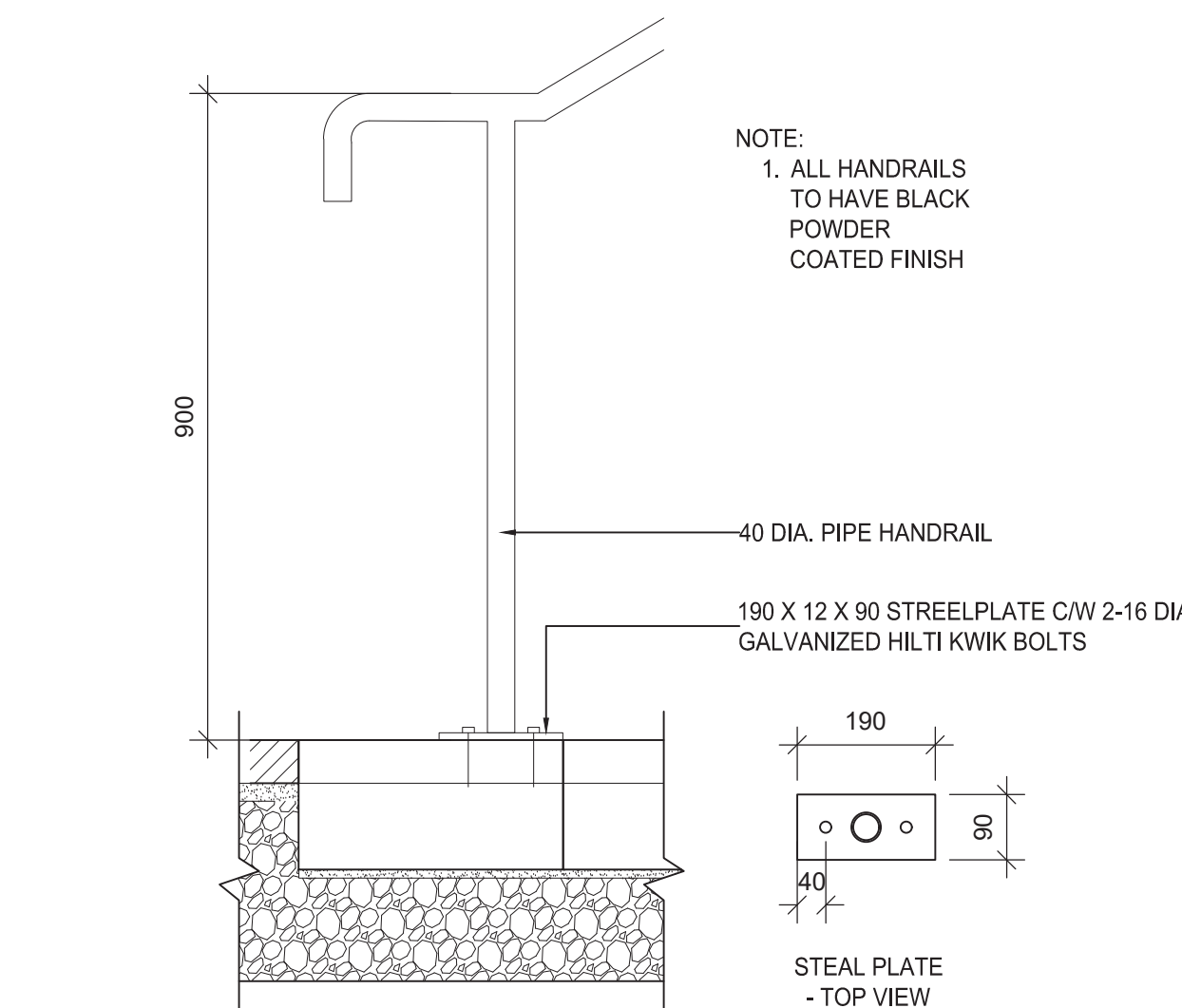
1. EXCAVATION SHALL BE DONE IN ACCORDANCE WITH ALL APPLICABLE HEALTH AND SAFETY REGULATIONS
2. INSTALLATION TO BE COMPLETED IN ACCORDANCE WITH MANUFACTURER'S SPECIFICATIONS
3. PROVIDE SUPPLEMENTAL IRRIGATION
4. DO NOT SCALE DRAWINGS



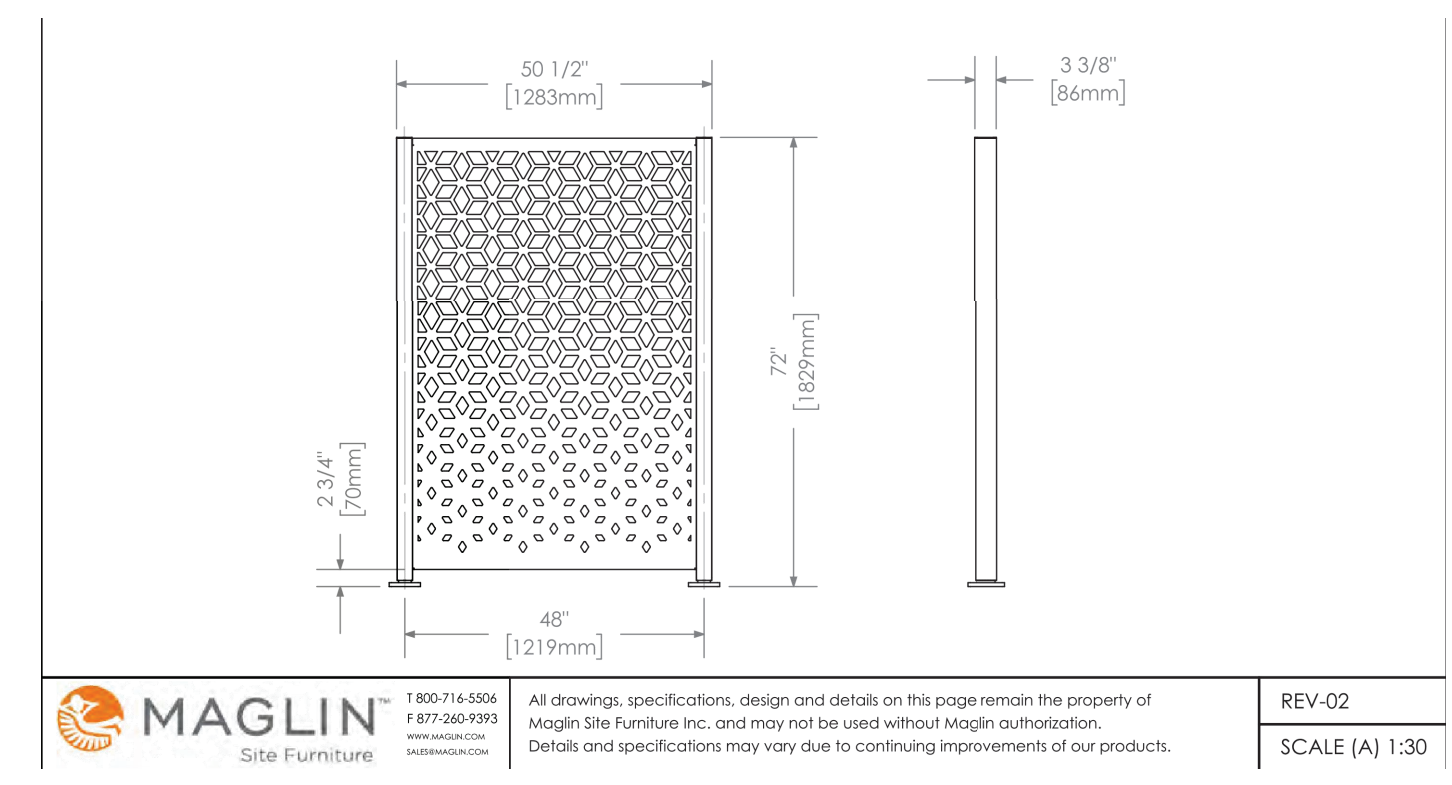
1 SYLVA CELL SYSTEM 2X
N.T.S.



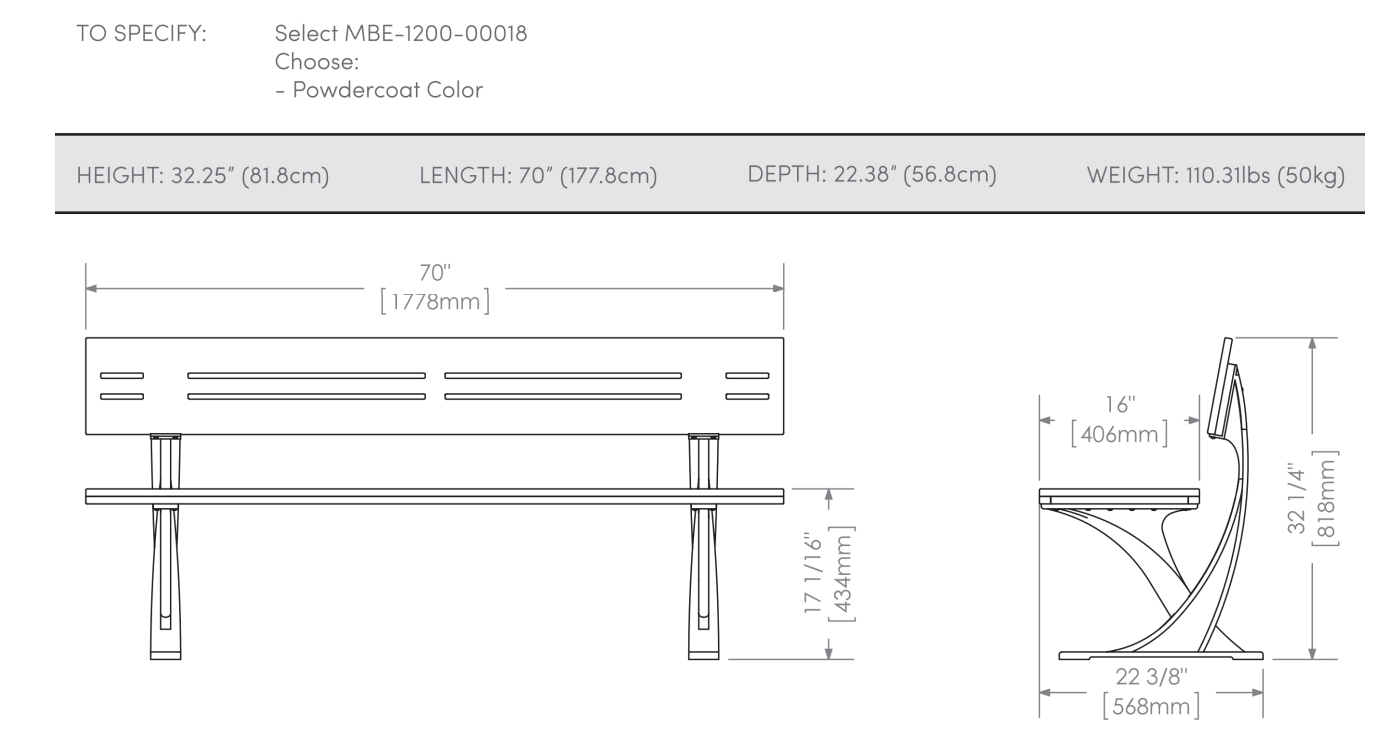
2 PRECAST STEP UNIT DETAIL
1:10



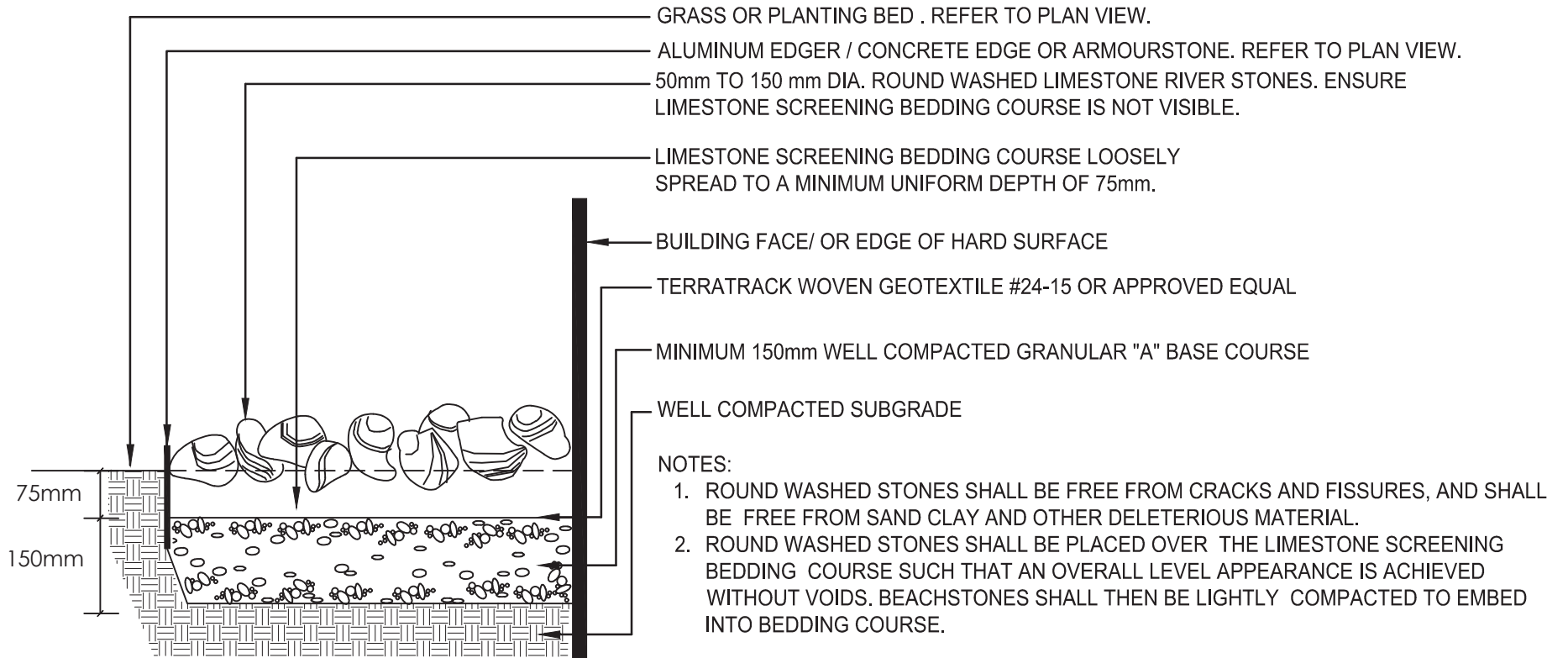
3 STAIR HANDRAIL
1:10



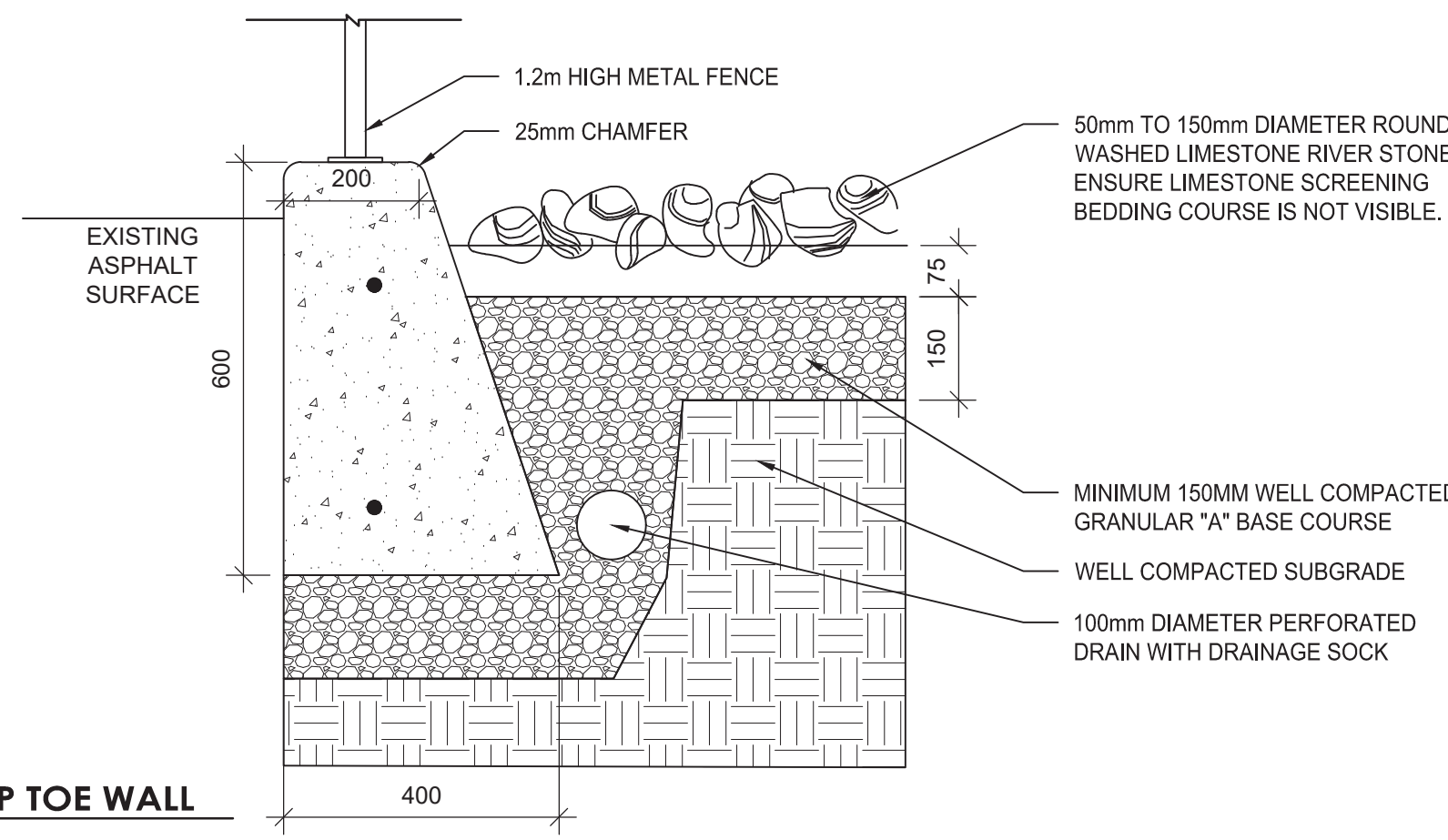
4 PRIVACY SCREEN
N.T.S.



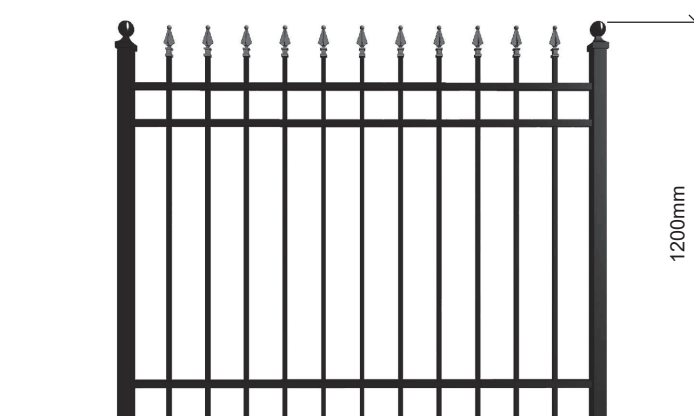
5 BENCH
N.T.S.



6 RIVERWASHED STONES
1:10



7 OPSP TOE WALL
N.T.S.



8 1.2m HIGH METAL FENCE
N.T.S.

5	ISSUED FOR CITY REVIEW	TA	KP	24.12.12
4	ISSUED FOR CITY REVIEW	TA	KP	24.09.23
3	ISSUED FOR CITY REVIEW	TA	KP	24.05.24
7	ISSUED FOR CITY REVIEW	TA	KP	25.02.26
6	ISSUED FOR CLASS B BUDGET	TA	KP	25.01.08
Revision		By	Appd.	YY.MM.DD
File Name: 160410406		CA	KP	23.04.25
		Dwn.	Chkd.	Dsgn.

Permit-Seal



Client/Project
ALL SAINTS DEVELOPMENT LP

WINDMILL
330 LAURIER ANENUE EAST
OTTAWA, ON

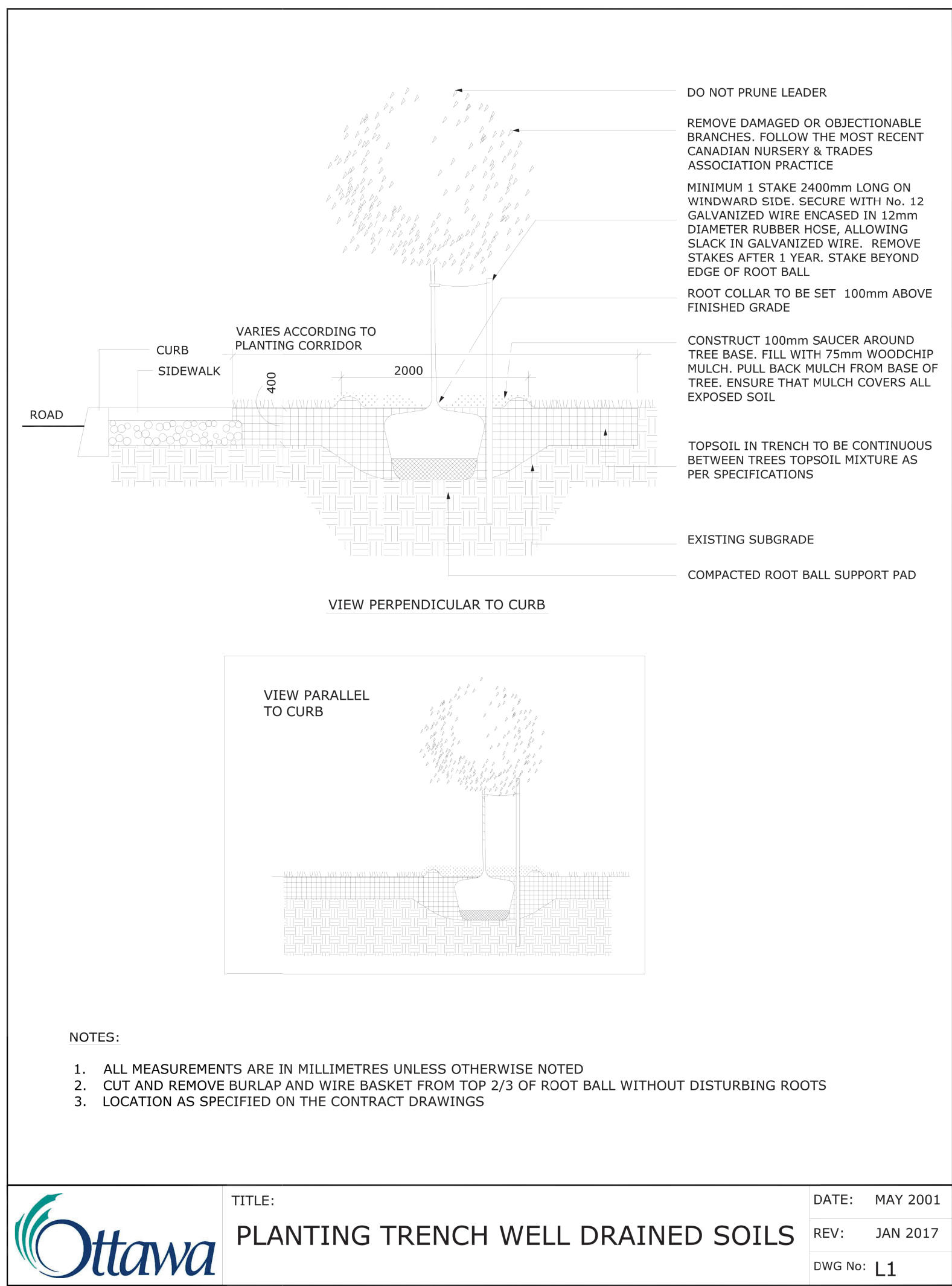
Title
LANDSCAPE DETAILS & NOTES - II

Project No. 160401789	Scale AS NOTED	Revision
Drawing No. L601	Sheet 6 of 7	Revision 7

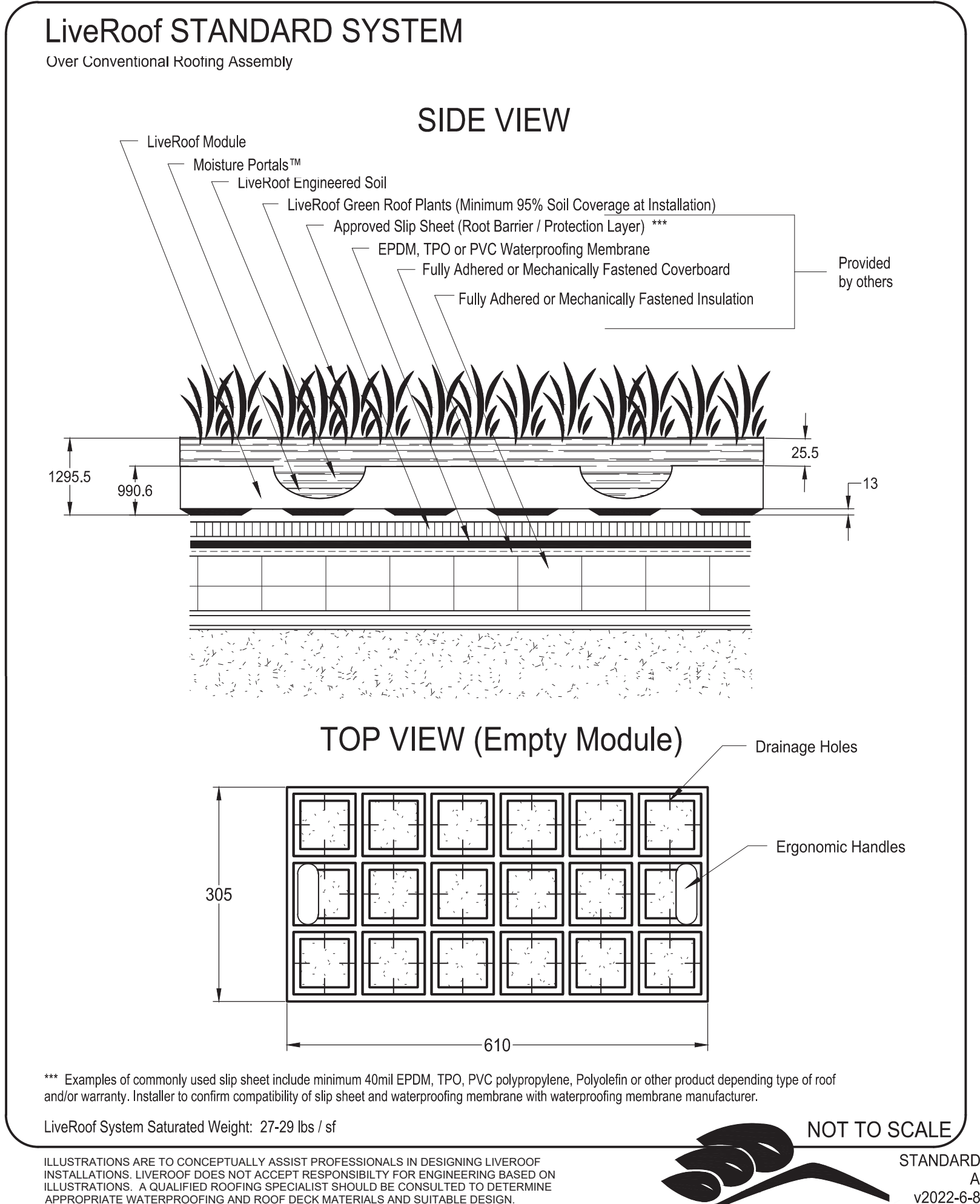
Copyright Reserved

The Contractor shall verify and be responsible for all dimensions. DO NOT scale the drawing - any errors or omissions shall be reported to Stantec without delay.
The Copyrights to all designs and drawings are the property of Stantec. Reproduction or use for any purpose other than that authorized by Stantec is forbidden.

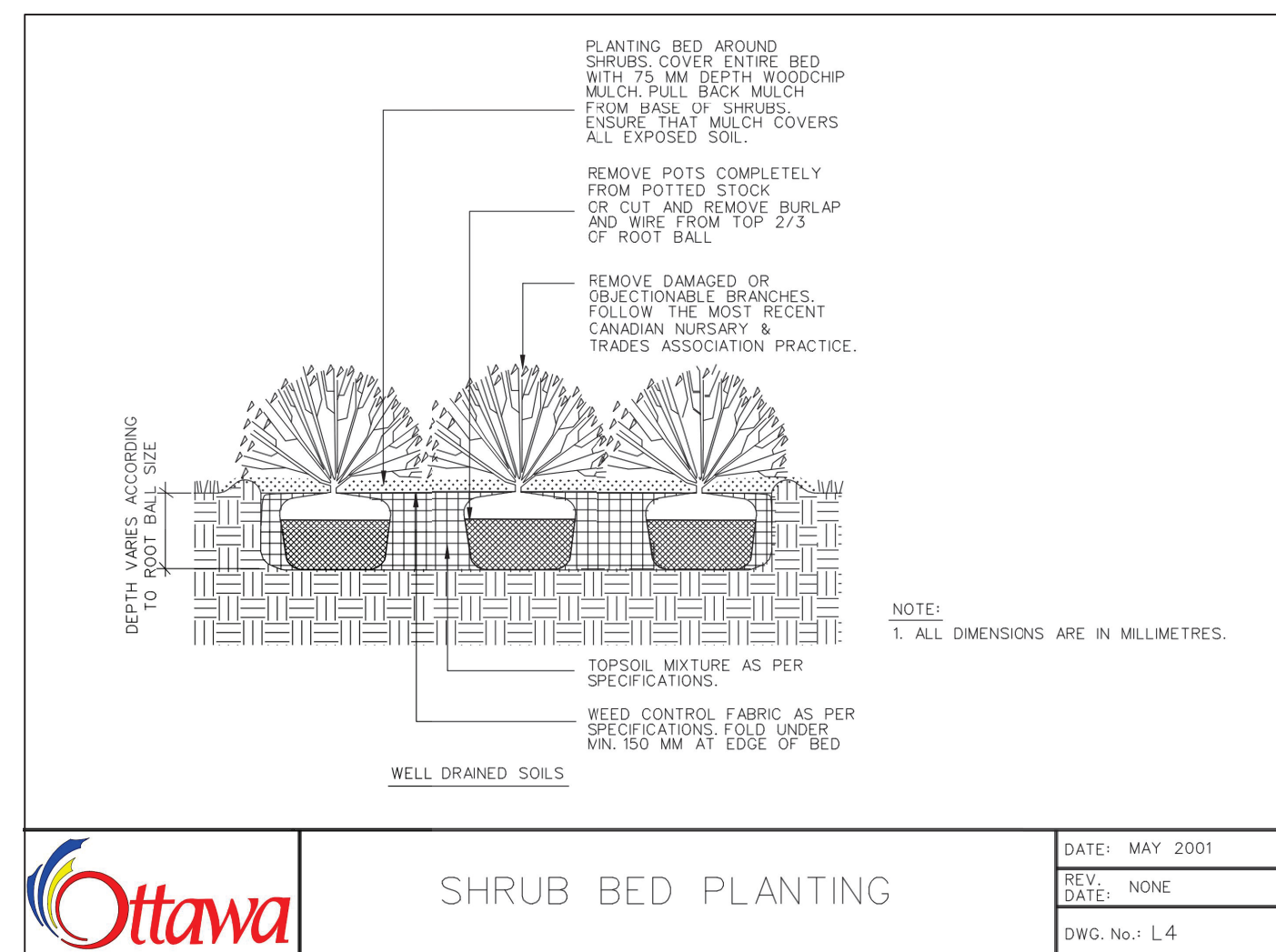
Legend



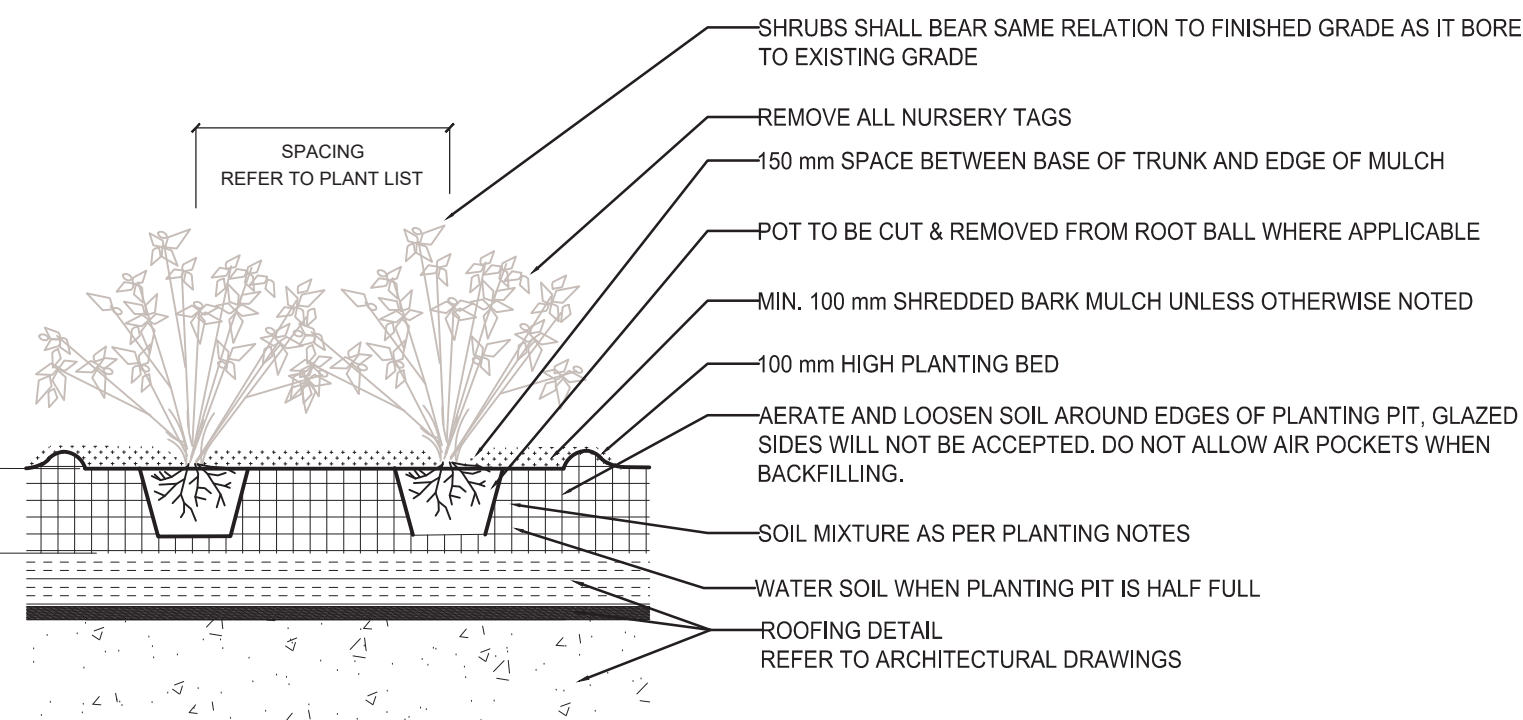
1 DECIDUOUS TREE PLANTING ON CITY RIGHT-OF-WAY
N.T.S



2 LIVEROOF STANDARD SYSTEM - ROOF
N.T.S



3 SHRUB PLANTING ON CITY RIGHT-OF-WAY
N.T.S



4 SHRUB PLANTING ON SLAB
N.T.S

PLANTING NOTES

- THE DETAILS ON THIS SHEET DO NOT REPRESENT ANY PARTICULAR SPECIES.
- TREES AND SHRUBS AS INDICATED IN THE DETAILS REPRESENT BOTH CONIFEROUS AND DECIDUOUS SPECIES.
- MATERIAL PLANTED IN GROUP SHALL BE SET IN CONTINUOUS PLANTING BEDS.
- CENTRE LINE OF SHRUBS SHALL NOT BE CLOSER THAN 2.4m FROM BUILDING FACE TO PROTECT BUILDING FOOTINGS AND INSULATION.
- PRUNING - TO SUIT SPECIES - PRUNE BRANCHES BY 1/3 TO REMOVE DAMAGED OR OBJECTIONABLE BRANCHES FOLLOWING PROPER HORTICULTURAL PRACTICE. DO NOT PRUNE LEADERS.
- FIRMLY COMPACT BACKFILLED PLANTING MIXTURE TO ELIMINATE AIR POCKETS OR PREVENT SETTLEMENT.
- PLANTING MATERIAL QUALITY STANDARDS:
7.1. ALL PLANT MATERIALS TO CONFORM TO THE CANADIAN NURSERY LANDSCAPE ASSOCIATION FOR VARIETY, SIZE AND CONDITION.
7.2. PLANT MATERIAL COLLECTED FROM WILD SOURCES WILL NOT BE ACCEPTED.

- LANDSCAPE ARCHITECT RESERVES THE RIGHT TO REFUSE ACCEPTANCE OF ANY PLANT DISPLAYING POOR GROWTH HABITS, INJURY OR DISEASE.
- ANY PLANTS THAT DO NOT CONFORM TO THE ABOVE STANDARDS WILL BE PROMPTLY REMOVED FROM THE SITE BY THE CONTRACTOR AND REPLACED WITH MATERIAL OF ACCEPTABLE QUALITY AT NO ADDITIONAL COST TO THE PROJECT.
- TOPSOIL:
8.1. SOIL TEXTURE BASED ON THE CANADIAN SYSTEM OF SOIL CLASSIFICATION TO CONSIST OF:
➢ CLAY: 14-20%
➢ SILT: 0-35%
➢ SAND: 45-70%
➢ ORGANIC MATERIAL: 4-10%
➢ pH: 6-8
8.2. SPREAD TOPSOIL TO FOLLOWING MINIMUM DEPTHS AFTER SETTLEMENTS UNLESS OTHERWISE NOTED ON DETAILS:
➢ 300mm FOR PERENNIALS
➢ 500mm FOR SHRUB BEDS
➢ 1000mm FOR TREE PLANTING
- MULCH:
➢ MULCH SHALL BE SHREDDED WOOD VARYING IN SIZE FROM 25-125mm IN LENGTH FROM CONIFEROUS TREES.

5	ISSUED FOR CITY REVIEW	TA	KP	24.12.12
4	ISSUED FOR CITY REVIEW	TA	KP	24.09.23
3	ISSUED FOR CITY REVIEW	TA	KP	24.05.24
7	ISSUED FOR CITY REVIEW	TA	KP	25.02.26
6	ISSUED FOR CLASS B BUDGET	TA	KP	25.01.08
Revision		By	Appd.	YY.MM.DD
File Name: 160410406		CA	KP	23.04.25
Dwn.		Chkd.	Dsgn.	YY.MM.DD

Permit-Seal



Client/Project
ALL SAINTS DEVELOPMENT LP

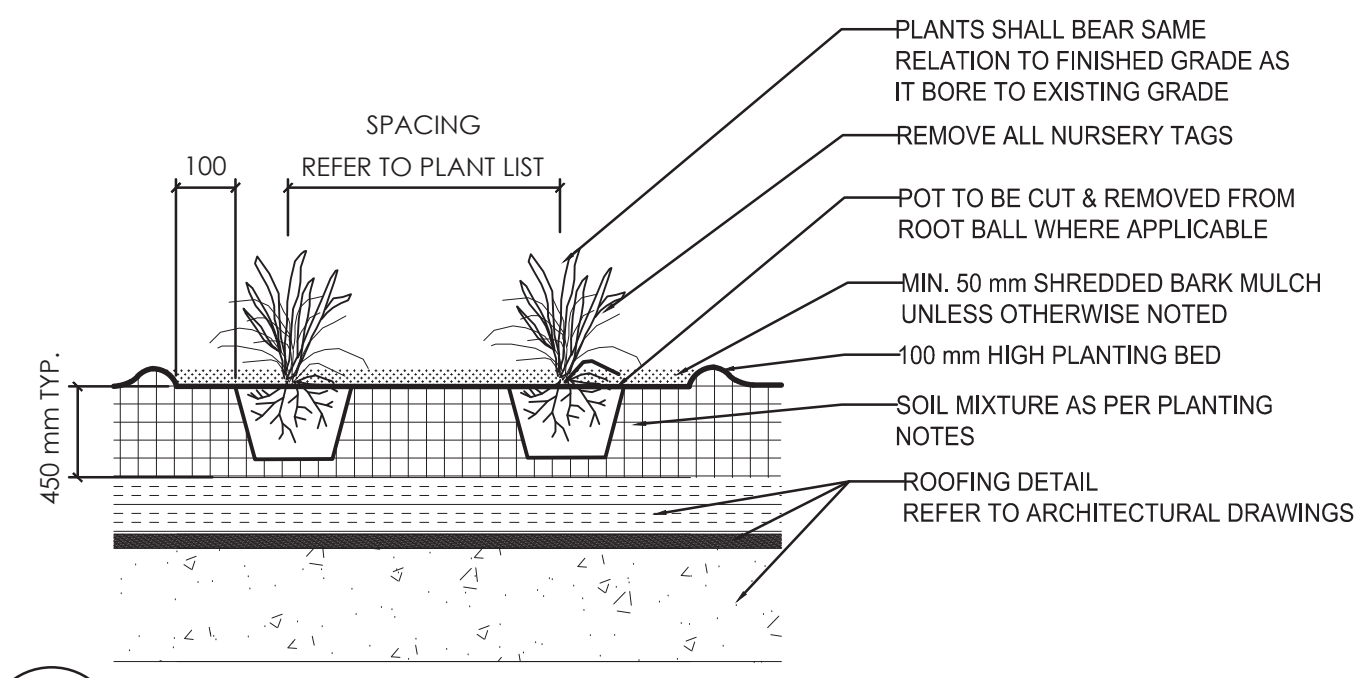
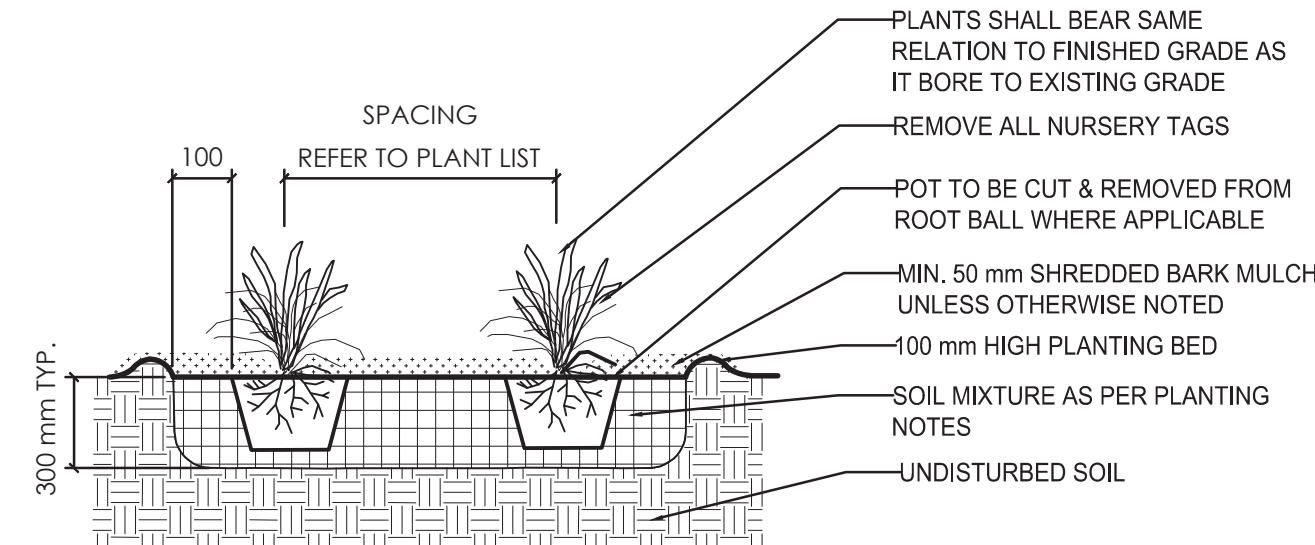
WINDMILL
330 LAURIER ANENUE EAST
OTTAWA, ON

Title
LANDSCAPE DETAILS & NOTES - III

Project No. 160401789
Drawing No. L602
Scale AS NOTED
Sheet 7 of 7
Revision

7
19193

5 PERENNIAL AND GRASSES PLANTING
N.T.S



6 PERENNIAL AND GRASSES PLANTING ON SLAB
N.T.S