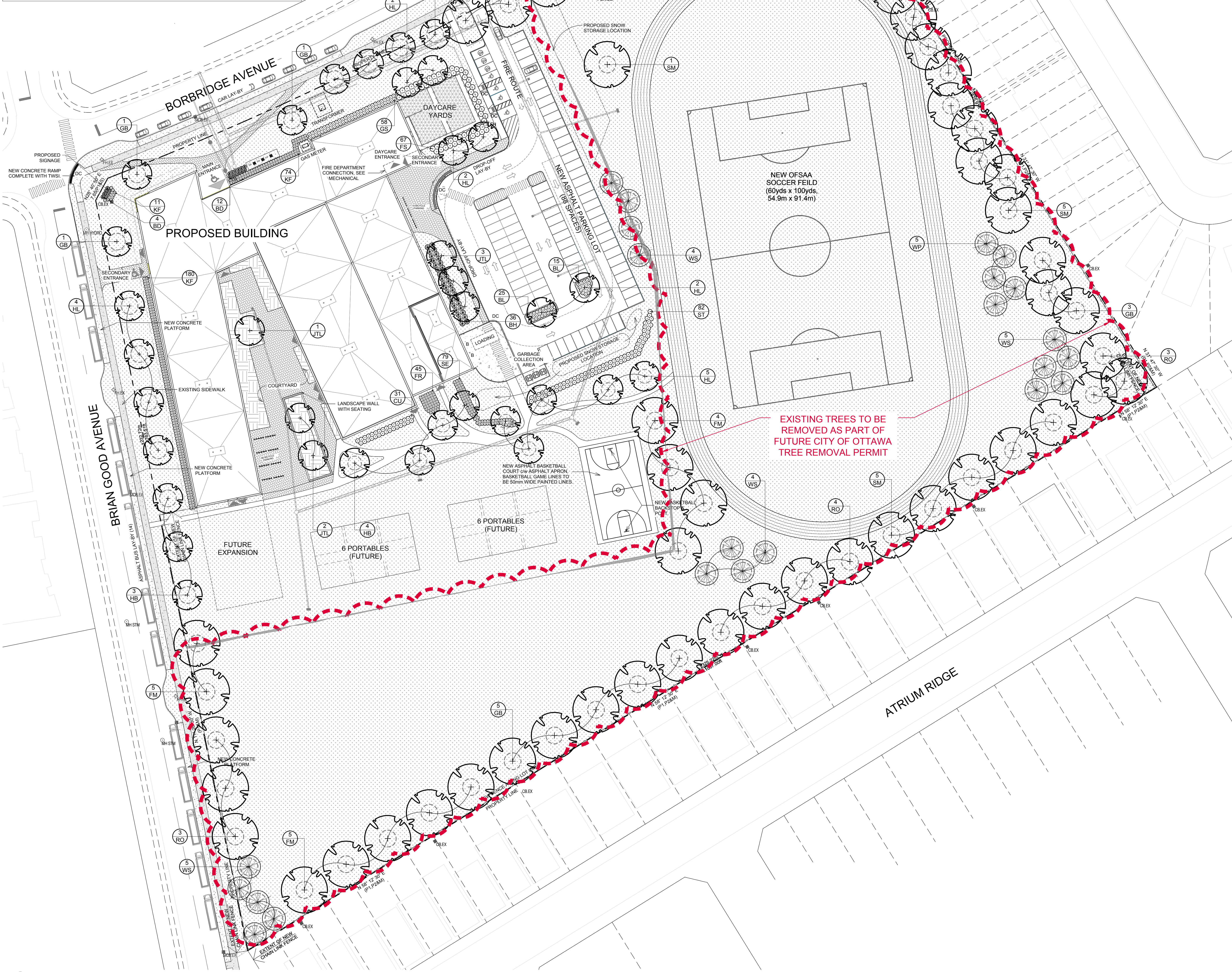


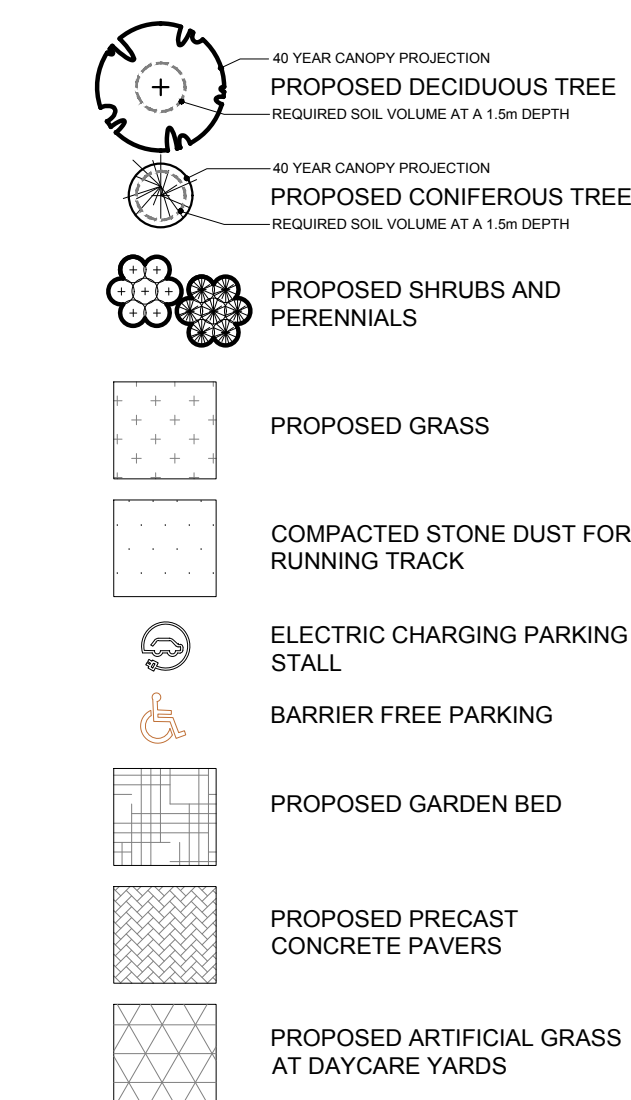
LEGAL DESCRIPTION:  
**BLOCK 220**  
**REGISTERED PLAN 4M-1641**  
CITY OF OTTAWA

ALL LEGAL SURVEY INFORMATION  
OBTAINED FROM SURVEY PLANS  
PREPARED BY : STANTEC  
GEOMATICS LTD., DATED , 8th OF  
MARCH 2025



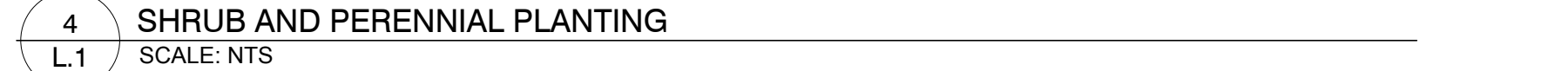
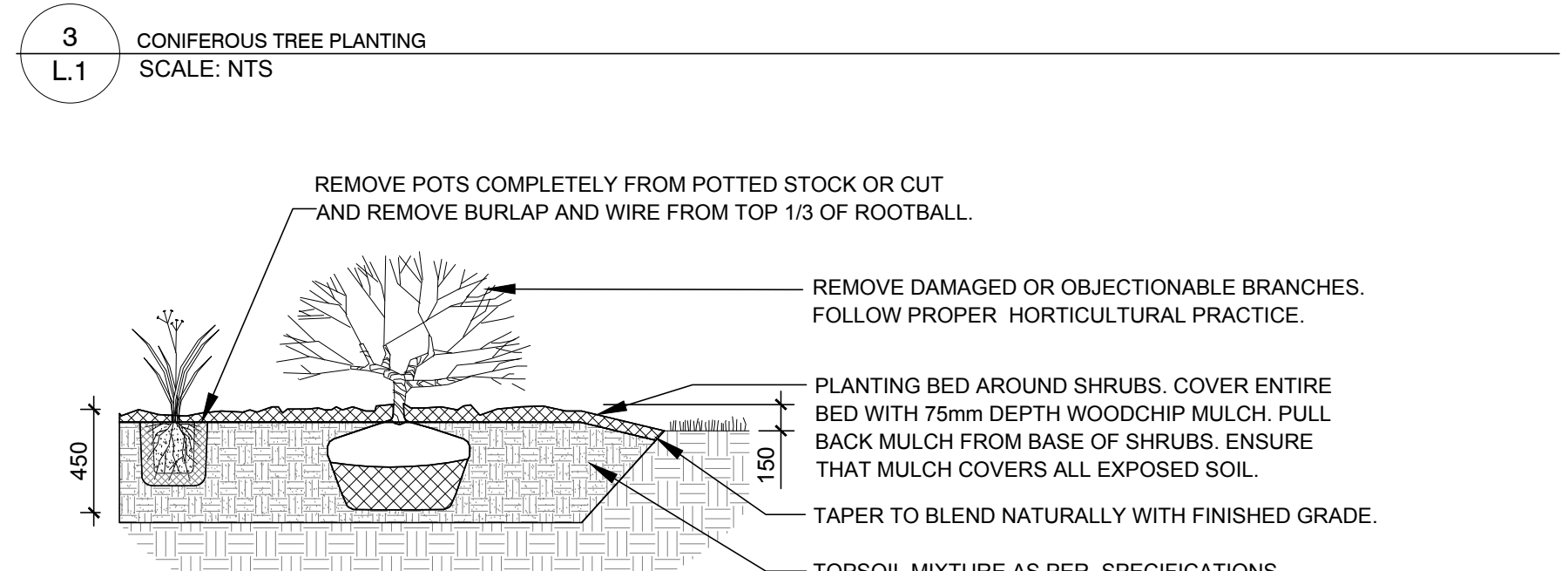
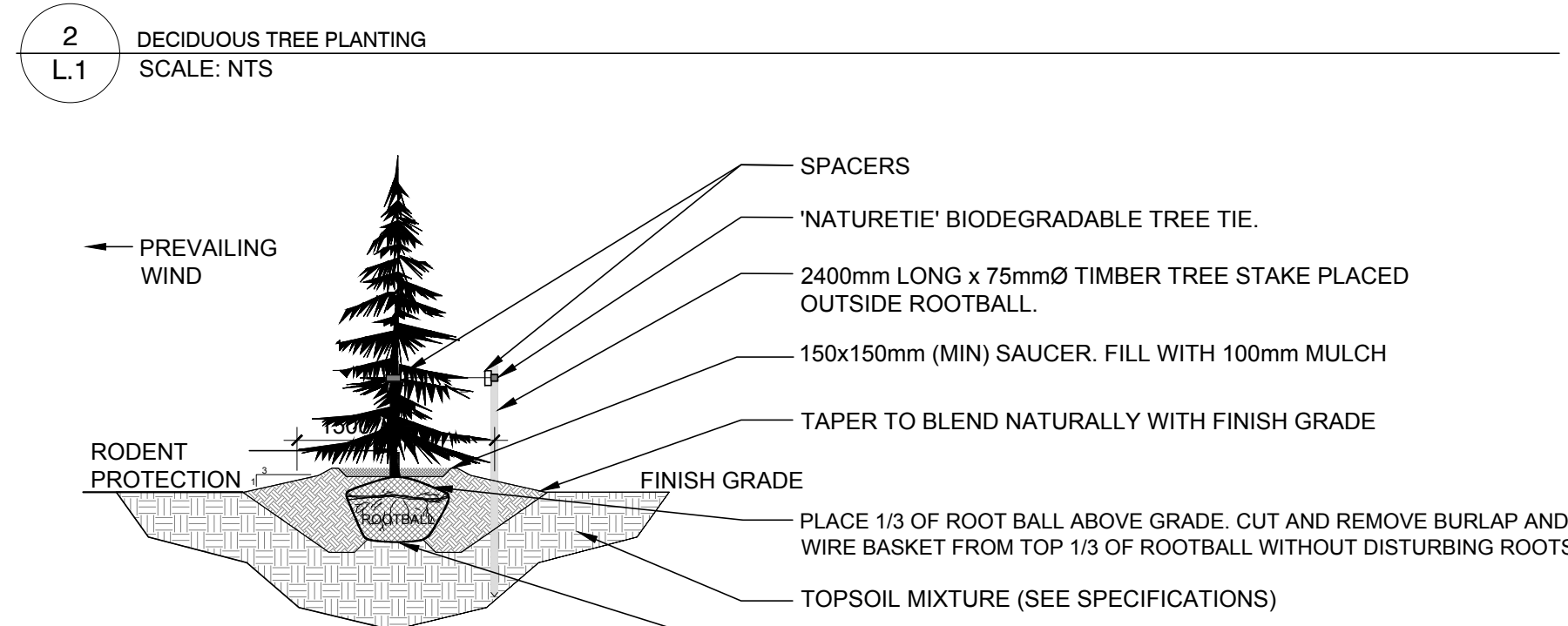
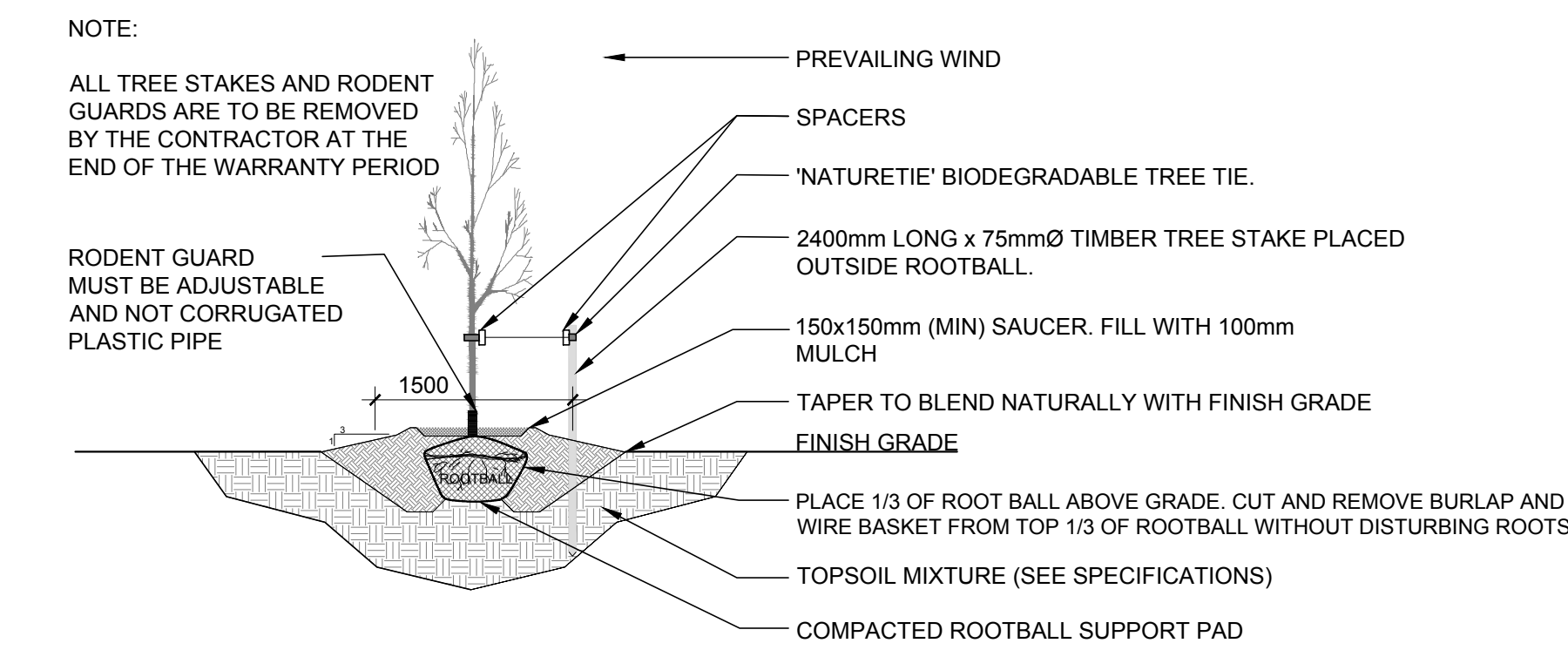
PROPOSED PLANT LIST				QTY	SP	
KEY	QTY	BOTANICAL NAME	COMMON NAME	SIZE	CONDITION	COMMENTS
TREES						
FM	13	Acer x freemanii 'Jeffersred'	Autumn Blaze Maple	50mm cal.	B&B	Large tree-native
GB	11	Ginkgo biloba	Ginkgo	50mm cal.	B&B	Large tree not native
HB	11	Celtis occidentalis	Hackberry	50mm cal.	B&B	Large tree-native
HL	15	Gleditsia triacanthos var. inermis 'Shademaster'	Shademaster Honeylocust	50mm cal.	B&B	Med tree-native to S. Ont
JTL	6	Syringa reticulata 'Ivory Silk'	Ivory Silk Tree Lilac	50mm cal.	B&B	Small tree-not native
RM	4	Acer rubrum	Red Maple	50mm cal.	B&B	Large tree-native
RO	18	Quercus rubra	Red Oak	50mm cal.	B&B	Large tree-native
SM	15	Acer saccharum	Sugar Maple	50mm cal.	B&B	Large tree-native
WP	5	Pinus strobus	White Pine	1800 mm ht.	B&B	Large coniferous-native
WS	24	Picea glauca	White Spruce	1800 mm ht.	B&B	Large coniferous-native
SHRUBS						
BH	36	Juniperus chinensis 'Hetz Blue'	Hetz Blue Juniper	800mm spr.	Potted	1500mm o.c.
BD	16	Juniperus sabina 'Blue Danube'	Blue Danube Juniper	600mm spr.	Potted	1000mm o.c.
CU	31	Rhus typhina 'Laciniata'	Cutleaf Staghorn Sumac	800mm ht.	Potted	1200mm o.c.
FS	67	Sorbaria sorbifolia	Ural False Spiraea	800mm ht.	Potted	1500mm o.c.
FR	45	Rhus aromatica	Fragrant Sumac	800mm ht.	Potted	800mm o.c.
GS	58	Spiraea x arguta	Garland Spiraea	800mm ht.	Potted	1000mm o.c.
SE	79	Sorbaria sorbifolia 'Sem'	Sem False Spiraea	800mm ht.	Potted	800mm o.c.
ST	82	Rhus typhina	Staghorn Sumac	800mm ht.	Potted	1200mm o.c.
PERENNIALS/ GRASSES						
BL	40	Leymus arenarius	Blue Lyme Grass	250mm pot	Potted	1000mm o.c.
KF	251	Calamagrostis 'Karl Foerster'	Karl Foerster Grass	250mm pot	Potted	800mm o.c.

LEGEND



GENERAL NOTES

- IT IS THE RESPONSIBILITY OF THE APPROPRIATE CONTRACTOR OR OFFICIAL TO REPORT ANY ERRORS, OMISSIONS OR DISCREPANCIES ON THIS PLAN WITH ACTUAL SITE CONDITIONS TO THE LANDSCAPE ARCHITECT BEFORE PROCEEDING WITH CONSTRUCTION.
- THE CONTRACTOR IS TO NOTIFY ALL UTILITY COMPANIES AND AUTHORITIES PRIOR TO ANY EXCAVATION AND ASCERTAIN LOCATIONS OF UNDERGROUND SERVICES.
- THE CONTRACTOR IS TO REINSTATE ALL AREAS AND ITEMS DAMAGED AS A RESULT OF CONSTRUCTION ACTIVITY.
- THE CONTRACTOR IS TO COMPLY WITH ALL PERTINENT CODES AND BY-LAWS.
- THE CONTRACTOR IS TO MAINTAIN A POSITIVE SURFACE RUN-OFF THROUGHOUT THE ENTIRE CONSTRUCTION PERIOD.
- THE LANDSCAPE ARCHITECT IS NOT RESPONSIBLE FOR SUBSURFACE CONDITIONS.
- THE CONTRACTOR IS TO IDENTIFY ALL EXISTING TREES TO REMAIN ON SITE WITH THE LANDSCAPE ARCHITECT PRIOR TO CONSTRUCTION.
- THE CONTRACTOR IS TO STAKE THE PROPOSED LOCATION OF ALL PLANT MATERIAL IN CONJUNCTION WITH THE LANDSCAPE ARCHITECT PRIOR TO EXCAVATION.
- MINIMUM DISTANCES FOR SELECTED DECIDUOUS TREES ARE AS FOLLOWS:  
9.1 BUILDING FOUNDATIONS - 7.5M  
9.2 SIDEWALKS - 1.5M  
9.3 PUBLIC STREETS - 2.5M  
9.4 UNDERGROUND INFRASTRUCTURE - 2.0M
- ALL TREES WITHIN 1M OF UNDERGROUND UTILITY TRENCHES ARE TO BE EXCAVATED BY HAND.
- REMOVE ALL PROTECTIVE WRAPPING FROM TREE TRUNKS AFTER INSTALLATION.
- STAKING OF TREES SHALL ONLY BE PERFORMED IF NECESSARY.
- ENSURE THAT MULCH IS PULLED BACK A MINIMUM DISTANCE OF 75MM FROM BASE OF TREE TRUNK.

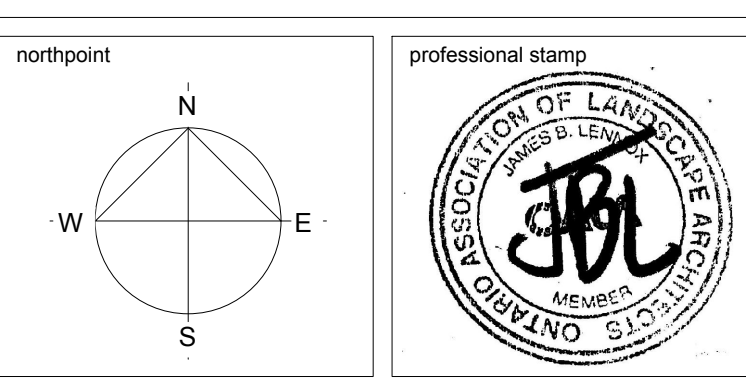


**40 YEAR CANOPY CALCULATION:**  
-60,072m2 site area  
-81 Large deciduous trees proposed (154m2 ea.), 18 medium deciduous trees proposed (79m2 ea.), 34 large coniferous trees (73m2 ea.) proposed and 7 small deciduous trees proposed (7m2 ea.)  
=16,627m2 canopy cover =27.7% canopy cover  
\*Large deciduous tree calculated at 14m spread, medium deciduous at 10m spread, large coniferous at 10m spread and small deciduous at 3m spread.

2	04/04/2025	ISSUED FOR SITE PLAN CONTROL	LC
1	14/03/2025	ISSUED FOR 33% CLIENT REVIEW	LC
no.	date	revision / issue	by

**grc architects**  
A PROVENCHER ROY COMPANY  
47 Clarence Street, Suite 401  
Ottawa, Ontario K1N 9K1  
1 (613) 541-4203 / 613-542-4180  
info@grcarchitects.com www.grcarchitects.com

consultant  
**JAMES B. LENNOX & ASSOCIATES INC.**  
**LANDSCAPE ARCHITECTS**  
332 CARLING AVE. OTTAWA, ONTARIO  
Tel: (613) 722-5168 Fax: (613) 722-5168



project title  
**RIVERSIDE SOUTH CATHOLIC HIGH SCHOOL**  
675 Borbridge Ave. Ontario

drawing title	<b>LANDSCAPE PLAN</b>		
date	SEPTEMBER, 2024	job no.	<b>24GR2437</b>
scale	1 : 500	drawn	LC
approved	JL	drawing no.	<b>L.1</b>
plot date	14 March, 2025		

1. DO NOT SCALE FROM THIS DRAWING.  
2. CONTRACTOR TO VERIFY ALL DIMENSIONS AND NOTIFY THE ARCHITECT OF ANY DISCREPANCIES BEFORE WORK COMMENCES.  
3. THIS DRAWING TO BE READ IN CONJUNCTION WITH THE FOLLOWING DRAWINGS: STRUCTURAL, MECHANICAL, ELECTRICAL.