

Notes & Legend

- Denotes
- M+ST " Maintenance Hole (Storm Sewer)
 - M+B " Maintenance Hole (Bell)
 - M+T " Maintenance Hole (Traffic)
 - M+H " Maintenance Hole (Hydro)
 - MH " Maintenance Hole (Unidentified)
 - VC " Valve Chamber (Watermain)
 - FH " Fire Hydrant
 - WV " Water Valve
 - HH " Handhole
 - TB-B " Bell Terminal Box
 - TB-T " Traffic Terminal Box
 - TSP " Traffic Signal Post
 - LS " Light Standard
 - CB " Catch Basin
 - T/G " Top of Grate
 - TOS " Top of Slope
 - BOS " Bottom of Slope
 - ∅ " Diameter
 - + 66.00 " Location of Elevations
 - + 66.00' " Top of Concrete Curb Elevation
 - C/L " Centreline
 - " Property Line
 - " Deciduous Tree
 - ★ " Coniferous Tree
 - △ S " Sign
 - M-W " Monitoring Well
 - PO-M " Metal Pole

**TOPOGRAPHICAL SKETCH OF
THE NORTHERLY PART OF
PIN 04201-0191**

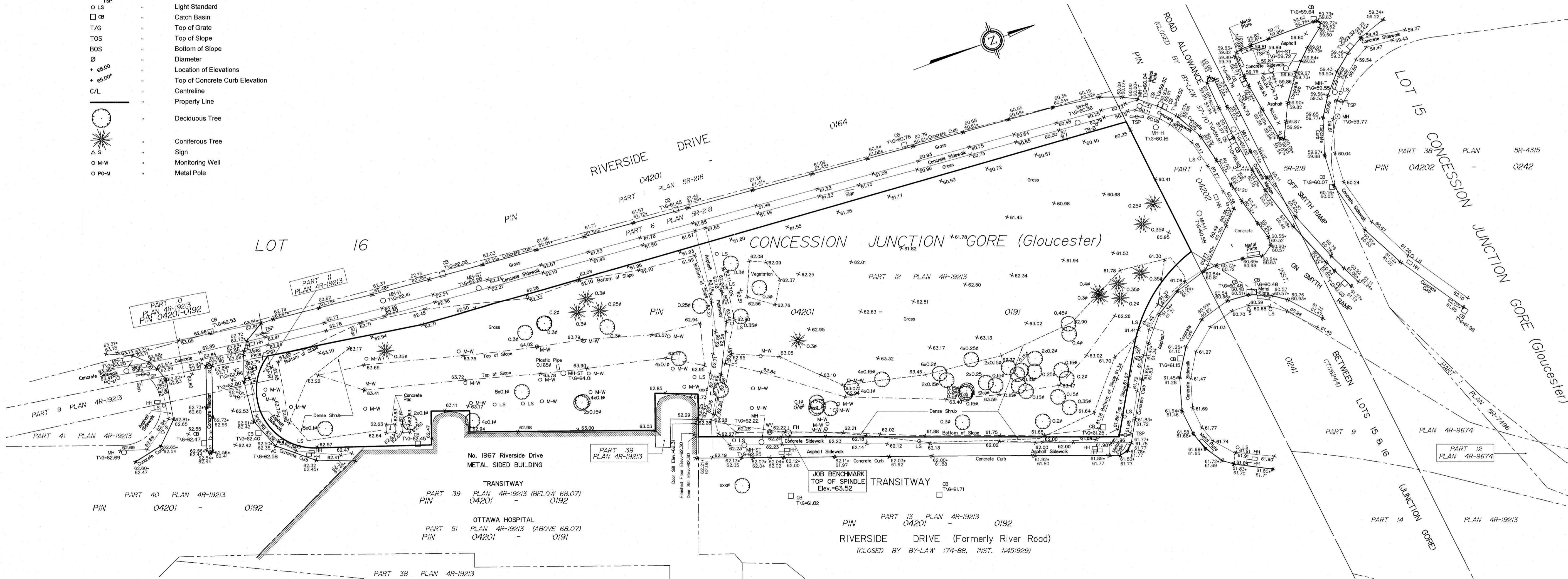
**Being PART OF LOT 16
CONCESSION JUNCTION GORE
GEOGRAPHIC TOWNSHIP OF GLOUCESTER
CITY OF OTTAWA**

Prepared by Annis, O'Sullivan, Vollebakk Ltd.
Fieldwork completed May 28, 2024
Added 33 trees June 27, 2024

Scale 1 : 400
16 12 8 4 0 8 16 Metres

Metric
DISTANCES AND COORDINATES SHOWN ON THIS PLAN
ARE IN METRES AND CAN BE CONVERTED TO FEET BY
DIVIDING BY 0.3048.

June 27, 2024
Date
E. H. Henweyer
Ontario Land Surveyor



BOUNDARY INFORMATION COMPILED FROM PLANS 4R-19213,
4R-35573 AND 4R-36051.

ELEVATION NOTES

- Elevations shown are geodetic and are referred to the CGVD28 geodetic datum and are derived from the Vertical Control Monument 019680274 having an elevation of 66.322 metres.
- It is the responsibility of the user of this information to verify that the job benchmark has not been altered or disturbed and that its relative elevation and description agrees with the information shown on this drawing.

UTILITY NOTES

- This drawing cannot be accepted as acknowledging all of the utilities and it will be the responsibility of the user to contact the respective utility authorities for confirmation.
- Only visible surface utilities were located.
- Underground utility data derived from City of Ottawa utility sheet reference
- Sanitary and storm sewer grades and inverts were derived from
- A field location of underground plant by the pertinent utility authority is mandatory before any work involving breaking ground, probing, excavating etc.

Y:\2024\0418-24 Parson Riverside Dr. T2 D2\Topo_EHD\Drawings\0418-24 Parson Riverside Dr. T2 D2.dwg