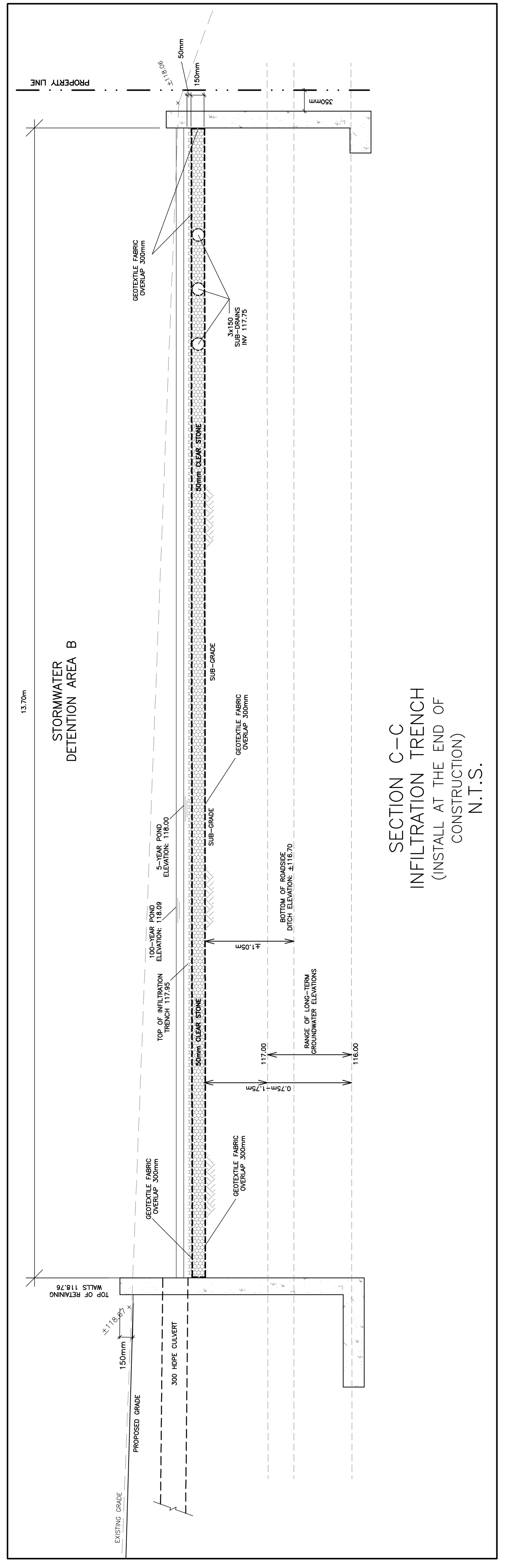
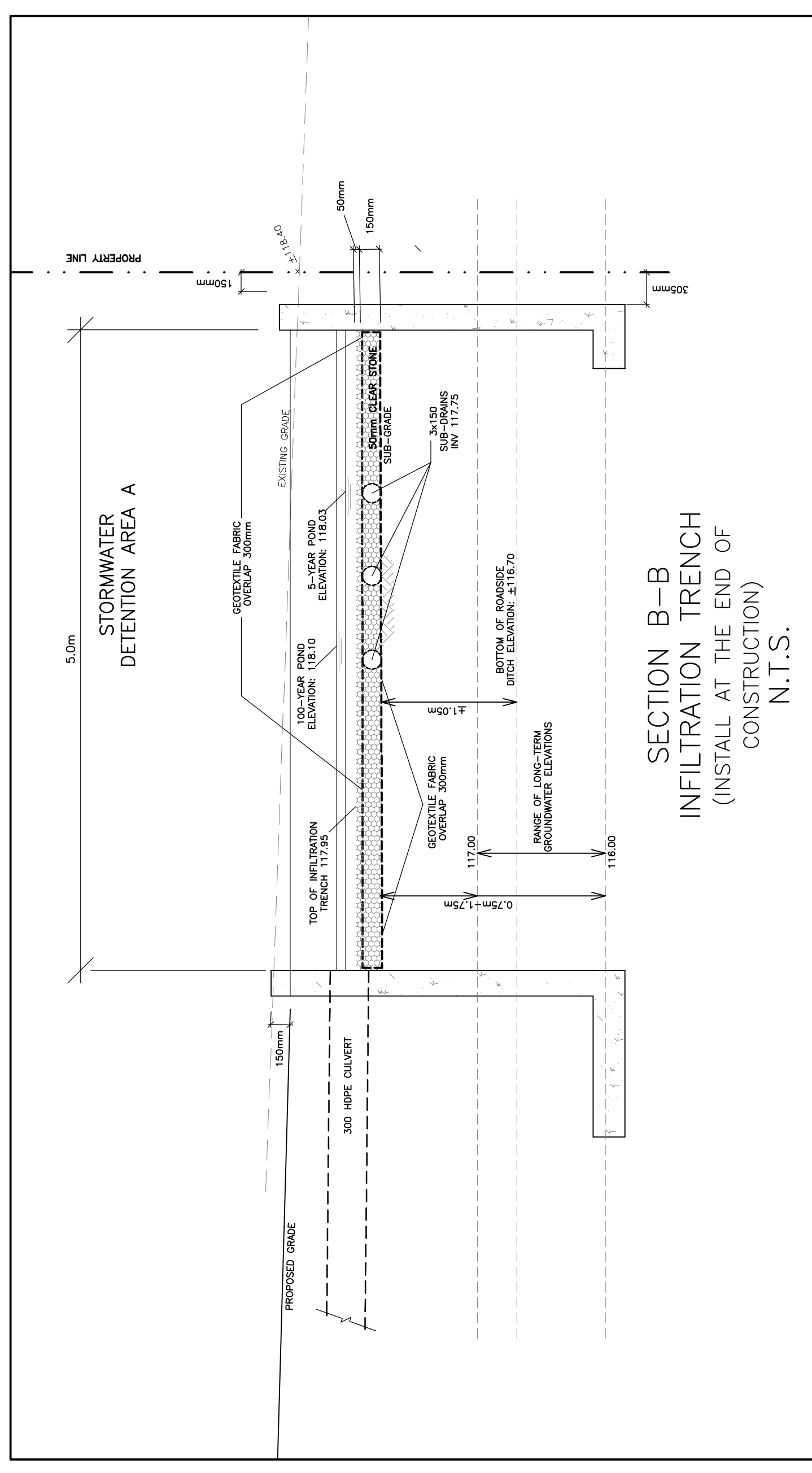


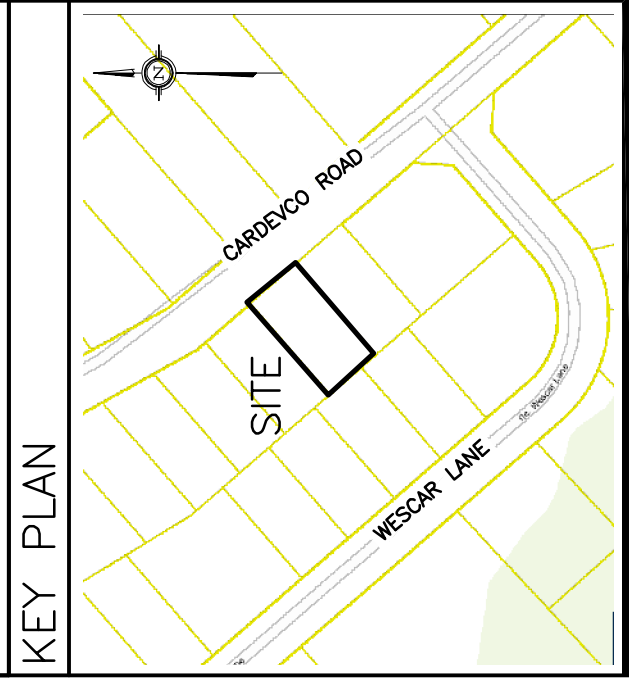
CATCH-BASIN & MANHOLE SCHEDULE

REF	TOP	SIZE	TYPE	INVERT AT INLET	INVERT AT OUTLET	NOTES
CB-1	117.95	600mm x 600mm	PRECAST CONCRETE CATCH-BASIN	-	117.22	TO OPSD 705.010 & CITY OF OTTAWA STANDARDS - FRAME & COVER TO CITY OF OTTAWA DRAWING No. S19
MH-2	118.02	1500mm	PRECAST CONCRETE MANHOLE	117.20(SW)	117.20 (6x150 SUB-DRAINS)	TO OPSD 701.010 & CITY OF OTTAWA STANDARDS - FRAME & COVER TO CITY OF OTTAWA DRAWING No. S25 & S24.1 OR OPSD 401.010
MH-3 (OCS)	118.65	CDS PMSU2015-4	PRECAST CONCRETE MANHOLE (OIL GRIT SEPARATOR)	117.90(SE)	117.90(NE)	TO OPSD 701.010 & CITY OF OTTAWA STANDARDS - FRAME & COVER TO A DEEP SUMP AS REQUIRED BY CDS



LEGEND

FFL	FINISHED FLOOR ELEVATION
TOP	TOP OF FOUNDATION
USF	UNDERSIDE OF FOOTING
- - -	PROPERTY LINE
CB	CATCH-BASIN
MH	STORM MANHOLE
ST	STORM SEWER
INV	INVERT OF PIPE
1999.99	EXISTING GRADE ELEVATION
1999.99	PROPOSED GRADE ELEVATION
ZZ	EXISTING SLOPE OF GRADE
ZZ	PROPOSED SLOPE OF GRADE
↑	EMERGENCY OVERLAND FLOW
T.O.S.	TOP OF SLOPE
B.O.S.	BOTTOM OF SLOPE
- - -	CENTERLINE OF SWALE
.....	SILT FENCE BARRIER
○	ROOF DRAIN
	LIGHT-DUTY PAVEMENT
XXXXX	HEAVY-DUTY PAVEMENT
.....	LANDSCAPE



No.	DATE	REVISION
7	MAR 25-25	RE-ISSUED FOR APPROVAL
6	FEB 10-25	RE-ISSUED FOR APPROVAL
5	OCT 11-24	RE-ISSUED FOR APPROVAL
4	JUN 9-23	RE-ISSUED FOR APPROVAL
3	NOV 24-22	ISSUED FOR APPROVAL
2	NOV 15-22	ISSUED FOR COORDINATION
1	SEP 12-22	PRELIMINARY

D. B. GRAY ENGINEERING INC.
 Stormwater Management Consulting & Professional Services
 700 Long Point Circle
 Ottawa, Ontario K1G 4G4
 Tel: 613-425-8044
 Email: d.gray@dbgrayengineering.com

PROPOSED ADDITION
135 CARVECCO ROAD
 OTTAWA, ONTARIO

DETAILS

Engineer's Seal
 D.B.G.
 H. Scale 1:100
 V. Scale 1:100
 Date SEP 12-22
 Job No. 21081
 Drawing No. **C-3** of **4**
 NOT VALID UNLESS SIGNED & DATED

