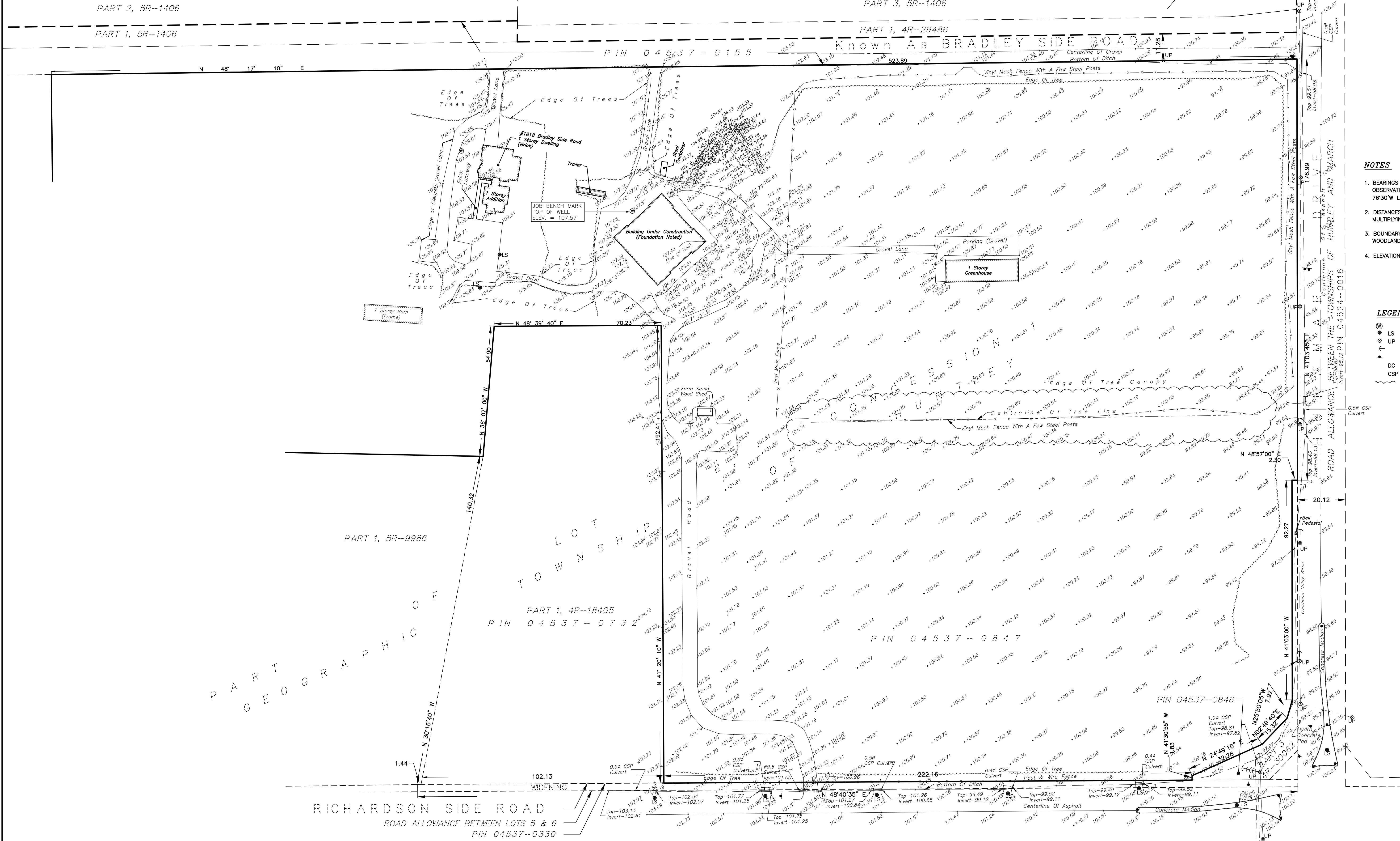


**METRIC**  
ELEVATIONS AND DISTANCES SHOWN ON THIS PLAN ARE IN METRES AND CAN BE CONVERTED TO FEET BY DIVIDING BY 0.3048

**CAUTION**  
THIS IS NOT A PLAN OF SURVEY AND SHALL NOT BE USED EXCEPT FOR THE PURPOSE INDICATED IN THE TITLE BLOCK.



- NOTES**
1. BEARINGS ARE GRID, DERIVED FROM GPS REAL-TIME NETWORK (RTN) OBSERVATIONS AND ARE REFERRED TO THE CENTRAL MERIDIAN, 76°30'W LONGITUDE MTM ZONE 9, (NAD83 ORIGINAL).
  2. DISTANCES ARE GROUND AND CAN BE CONVERTED TO GRID BY MULTIPLYING BY THE COMBINED SCALE FACTOR 0.999911.
  3. BOUNDARY SHOWN PER NOTES AND RECORDS OF FAIRHALL, MOFFATT & WOODLAND LIMITED AND PLANS 4R-29486, 4R-30062, 4R-18405.
  4. ELEVATIONS ARE REFERRED TO GEODETIC DATUM (CVGD28).

- LEGEND**
- ⊕ - WELL
  - ⊙ - LS - LAMP STANDARD
  - ⊙ - UP - UTILITY POLE
  - ⊙ - GUY WIRE AND ANCHOR
  - ▲ - SIGN
  - DC - DEPRESSED CURB
  - CSP - CORRUGATED STEEL PIPE
  - ~ - EDGE OF TREES/BUSH

DATE OF SURVEY: 28 JUNE, 2024  
REVISION DATE: JANUARY 14, 2025 - Laneways Around Existing Buildings.

<b>Fairhall Moffatt &amp; Woodland</b> O T T A W A Surveying and Land Information Services 100-600 TERRY FOX DRIVE, KANATA, ONTARIO K2L 4B6 TEL: (613) 591-2580 FAX: (613) 591-1495 www.fmw.on.ca	JOB No. A C 2 7 2 0 0	1818 BRADLEY SIDE ROAD CITY OF OTTAWA	THIS IS NOT A VALID COPY UNLESS EMBOSSED WITH SEAL
	E 347803 , N 5018967 S:\JOBS\AC27200\DWG\ORAN2025 Sketch-1_AC27200_comp1_4.dwg (7)	SKETCH TO SHOW TOPOGRAPHIC DETAILS OF AREAS UNDER CONSTRUCTION	

© COPYRIGHT 2025. REPRODUCTION, ALTERATION OR DISTRIBUTION OF THIS PLAN WITHOUT THE WRITTEN CONSENT OF FAIRHALL, MOFFATT & WOODLAND LIMITED IS PROHIBITED.