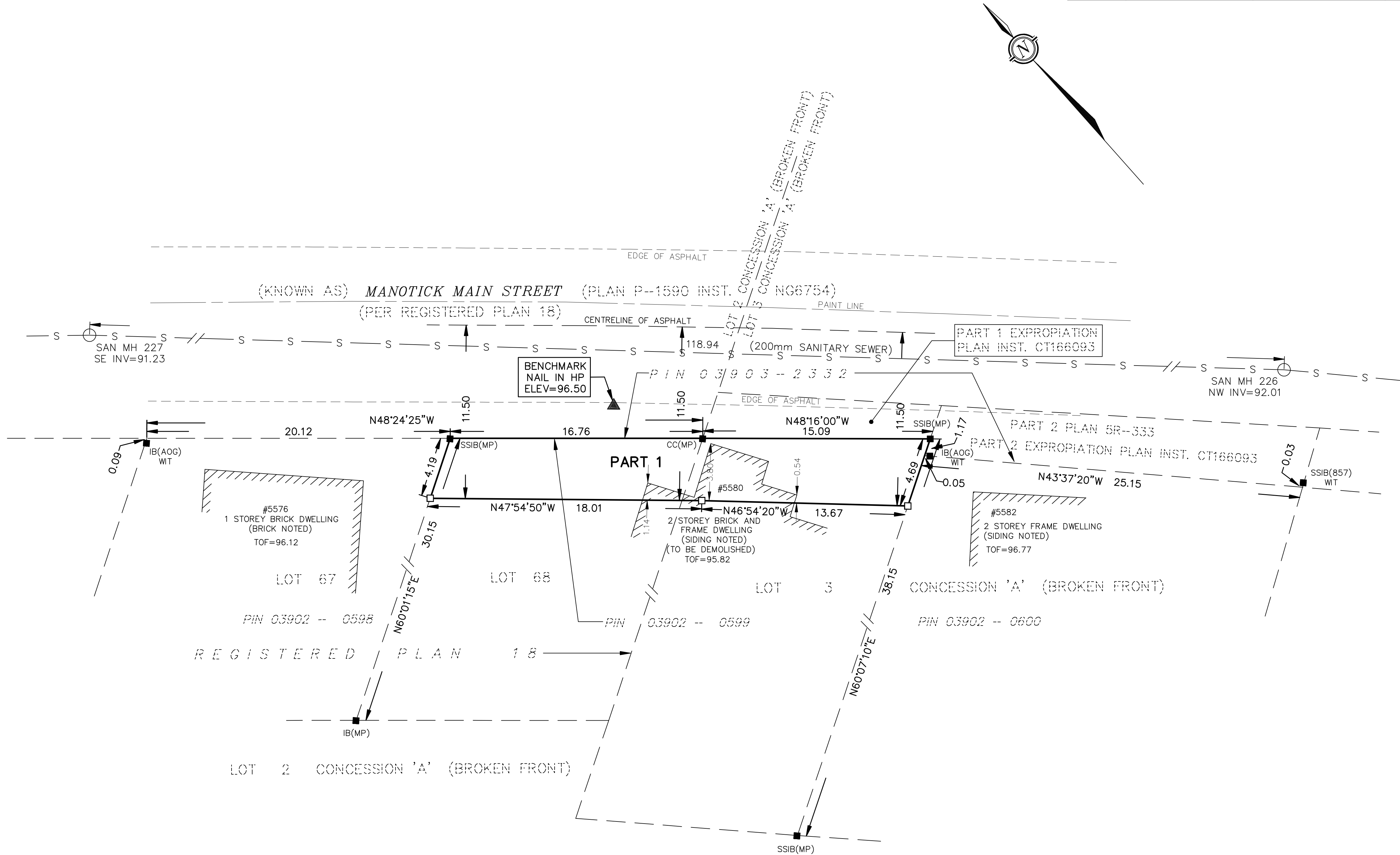


METRIC
DISTANCES AND COORDINATES SHOWN ON THIS PLAN ARE IN METRES
AND CAN BE CONVERTED TO FEET BY DIVIDING BY 0.3048

SCHEDULE				
PART	LOT	PLAN/CON	PIN	AREA(sq.m.)
1	PART OF LOT 68	REGISTERED PLAN 18	PART OF 03902-0599	132
	PART OF LOT 3	CONCESSION 'A' (BF)		



PLAN OF SURVEY OF
LOT 68
REGISTERED PLAN 18
AND PART OF LOT 3
CONCESSION 'A' (BROKEN FRONT)
GEOGRAPHIC TOWNSHIP OF NORTH GOWER
CITY OF OTTAWA

SCALE 1 : 200

THE INTENDED PLOT SIZE OF THIS PLAN IS 430mm IN HEIGHT BY 650mm
IN WIDTH WHEN PLOTTED AT A SCALE OF 1:200.

FAIRHALL, MOFFATT & WOODLAND LIMITED
ONTARIO LAND SURVEYORS

- NOTES
- BEARINGS ARE GRID, DERIVED FROM OBSERVED REFERENCE POINTS AND BY REAL TIME NETWORK OBSERVATIONS AND ARE REFERRED TO THE CENTRAL MERIDIAN, 76°30'W LONGITUDE MTM ZONE 9, NAD83 (CSRS 2010).
 - DISTANCES ARE GROUND AND CAN BE CONVERTED TO GRID BY MULTIPLYING BY THE COMBINED SCALE FACTOR *****.

SURVEYOR'S CERTIFICATE

- I CERTIFY THAT:
- THIS SURVEY AND PLAN ARE CORRECT AND IN ACCORDANCE WITH THE SURVEYS ACT, THE SURVEYORS ACT, THE LAND TITLES ACT AND THE REGULATIONS MADE UNDER THEM.
 - THE SURVEY WAS COMPLETED ON

DATE _____ JOHN H. GUTRI
ONTARIO LAND SURVEYOR

THIS PLAN OF SURVEY RELATES TO AOLS PLAN SUBMISSION FORM NUMBER

UTILITY NOTES

- THIS DRAWING CANNOT BE ACCEPTED AS ACKNOWLEDGING ANY UNDERGROUND UTILITIES AND IT WILL BE THE RESPONSIBILITY OF THE USER TO CONTACT THE RESPECTIVE UTILITY AUTHORITIES FOR CONFIRMATION OR LOCATION.
- UNDERGROUND UTILITIES, AS REPORTED ON THIS DRAWING, ARE NOT BASED ON AN ACTUAL 'FIELD LOCATE' BY THE RESPECTIVE UTILITY AGENCIES BUT HAVE BEEN COMPILED FROM DATA OBTAINED FROM THE FOLLOWING SOURCE:
a) CITY OF OTTAWA
- BEFORE ANY WORK INVOLVING PROBING, EXCAVATING, ETC., A FIELD LOCATION OF UNDERGROUND PLANT BY THE PERTINENT UTILITY AUTHORITY IS MANDATORY.

LEGEND

- - SURVEY MONUMENT SET
- - SURVEY MONUMENT FOUND
- SIB - STANDARD IRON BAR
- SSIB - SHORT STANDARD IRON BAR
- IB - IRON BAR
- (P) - REGISTERED PLAN
- (S) - SET
- (M) - MEASURED
- (857) - FAIRHALL, MOFFATT & WOODLAND LIMITED, O.L.S.
- PIN - PROPERTY IDENTIFIER NUMBER
- (MP) - MACINTOSH PERRY SURVEYING INC.
- (AOG) - ANNIS, O'SULLIVAN, VOLLEBEKK LTD. O.L.S.

COORDINATES WERE DERIVED FROM REAL TIME NETWORK OBSERVATIONS (SMARTNET) MTM ZONE 9, NAD83 (CSRS 2010).		
COORDINATES HAVE BEEN DETERMINED TO AN URBAN ACCURACY IN ACCORDANCE WITH SECTION 14(2) OF O.REG 216/10.		
POINT ID	NORTHING	EASTING
*	*	*
*	*	*
COORDINATES CANNOT IN THEMSELVES BE USED TO RE-ESTABLISH CORNERS OR BOUNDARIES SHOWN ON THIS PLAN.		

**Fairhall
Moffatt &
Woodland**
LIMITED
ONTARIO LAND SURVEYORS
Surveying and Land Information Services
100-600 TERRY FOX DRIVE, KANATA, ONTARIO K2L 4B6
TEL: (613) 591-2580 FAX: (613) 591-1495
www.fmw.on.ca

JOB No.
AE15000

E , N

REFERENCE No.
17 - 18 NORTH GOWER

S:\JOBS\AE15000\DWG\
ae150_draft-rp.dwg (KG)