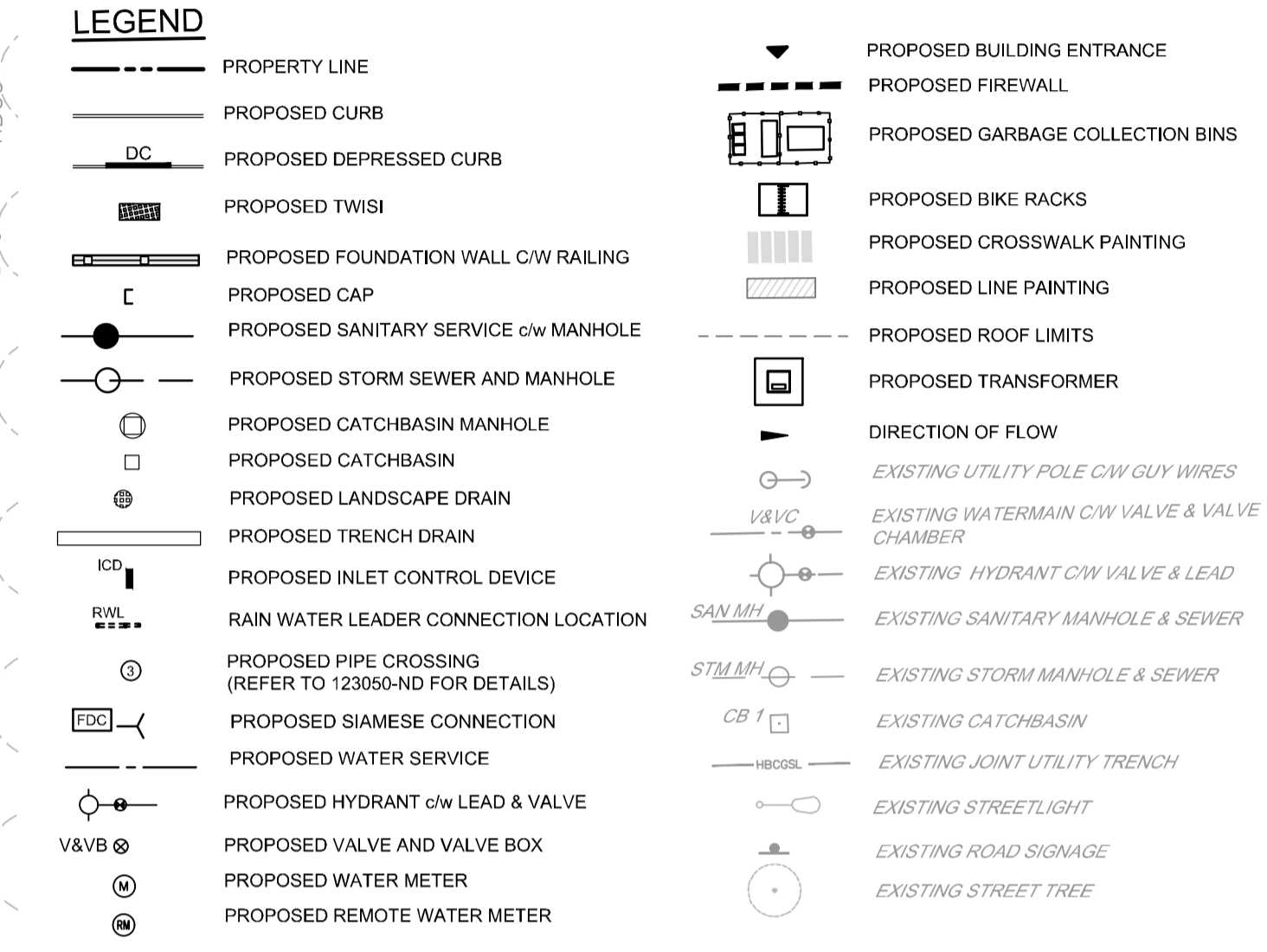
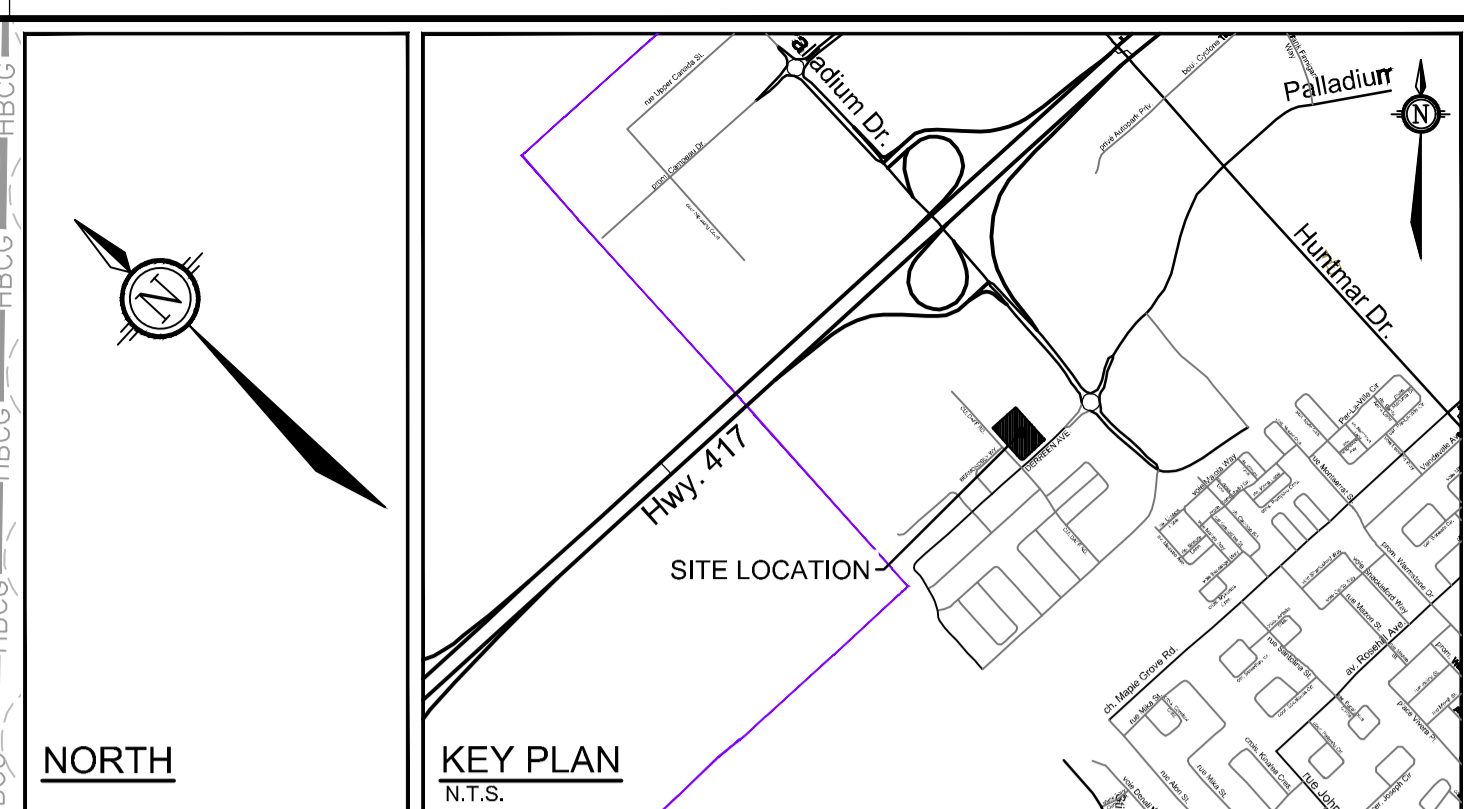


BLOCK 24
(COMMERCIAL)



PIPE CROSSING TABLE

CROSSING	LOWER PIPE	HIGHER PIPE	CLEARANCE
1	200mm Ø WM OBV = 105.93	250mm Ø STM INV = 106.43	±0.50m
2	250mm Ø SAN OBV = 105.08	250mm Ø STM INV = 106.24	±1.16m
3	200mm Ø WM OBV = 105.76	250mm Ø STM INV = 106.26	±0.50m

PROPOSED WATER SERVICE (1+000.0)

STATION	SURFACE ELEVATION	T/W M ELEVATION	COMMENTS
1+000.00	108.32	105.85*	CONNECTION TO EXISTING 300mm Ø WATERMAIN
1+010.39	108.64	106.24	PROPOSED VALVE AND VALVE BOX
1+012.01	108.70	105.93	CROSS BELOW 250mm STM AS PER CITY OF OTTAWA DETAIL W25 (CLEARANCE = ±0.50m)
1+014.88	108.90	106.40	CAP SERVICE 1.0m FROM THE FOUNDATION WALL

PROPOSED WATER SERVICE (2+000.0)

STATION	SURFACE ELEVATION	T/W M ELEVATION	COMMENTS
2+000.0	108.63	106.23*	CONNECTION TO EXISTING 200mm VALVE EXISTING CAP AND PIPE PAST VALVE TO BE REMOVED
2+002.0	108.70	105.76	CROSS ABOVE 300mm STM AS PER CITY OF OTTAWA DETAIL W25.2 (CLEARANCE = ±0.50m)
2+005.06	108.80	106.40	CAP SERVICE 1.0m FROM THE FOUNDATION WALL

* CONTRACTOR TO CONFIRM THE ELEVATION OF THE EXISTING WATER MAIN AND NOTIFY THE ENGINEER IF DIFFERENT

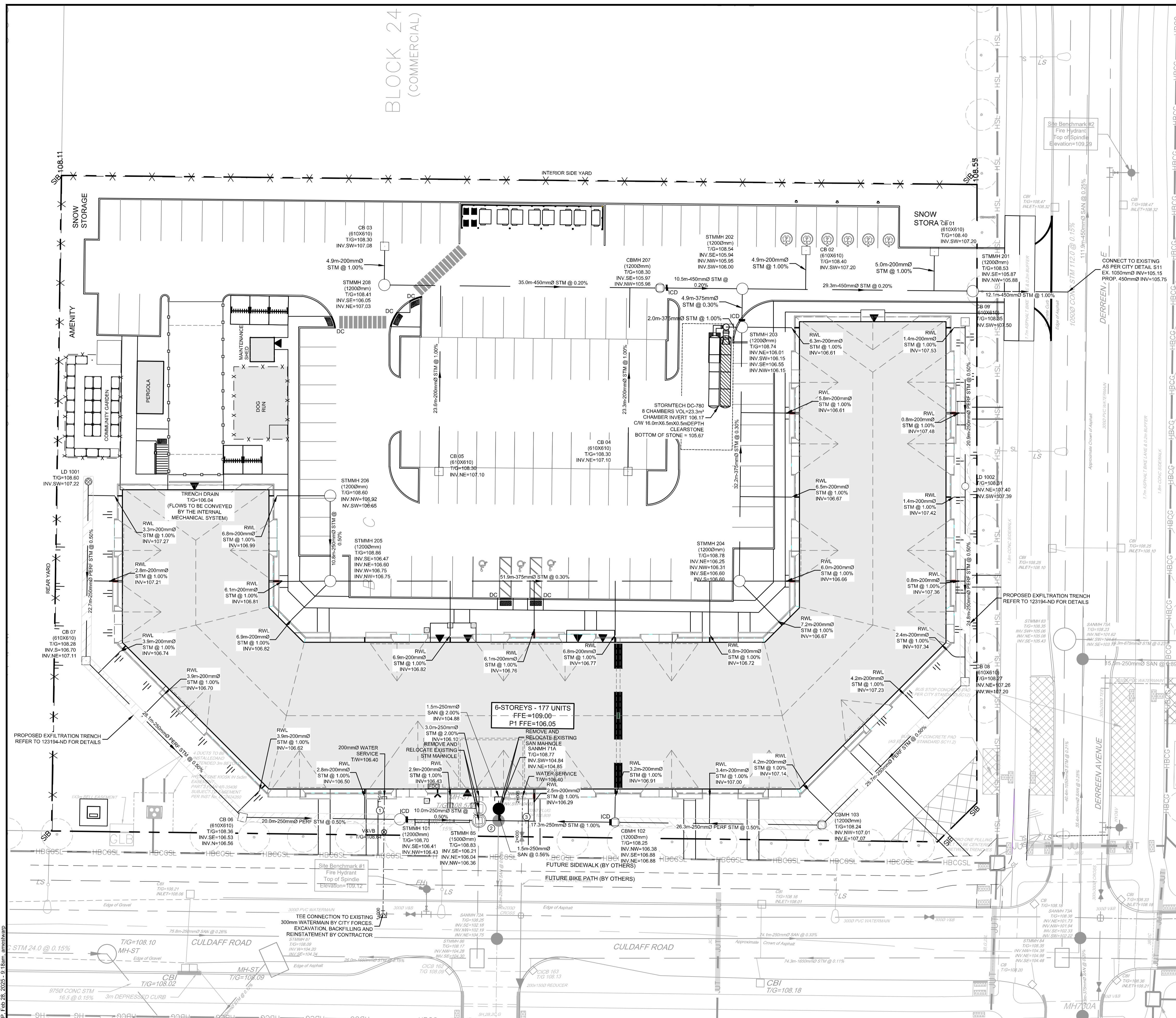
ICD SIZING AND FLOWS

STRUCTURE	ORIFICE ICD SIZE	ICD INVERT (m)	T/G (m)	100-yr HGL (m)	100-yr HEAD (m)	100-yr RELEASE RATE (L/s)
STMMH 101	83mm PLATE	106.43	108.70	107.17	1.70	18.8
CBMH 102	83mm PLATE	106.38	108.25	107.48	1.06	14.8
STMMH 203	94mm PLATE	106.02	108.74	107.81	1.74	23.8
CBMH 207	152mm PLATE	105.97	108.30	108.42	2.37	73.0

NOTE:

- ALL SERVICE CONNECTIONS AND CATCHBASIN CONNECTIONS TO BE MADE PER CITY OF OTTAWA DETAIL S11, S11.2, AND S1
- BACKWATER VALVES TO BE PROVIDED ON ALL STORM AND SANITARY LATERALS AS PER CITY OF OTTAWA DETAILS S14, S14.1, AND S14.2, DOWNSTREAM OF ANY GRAVITY OUTLET FROM THE BUILDING. REFER TO MECHANICAL PLANS FOR DETAIL
- ALL FLOWS FROM THE UNDERGROUND PARKING GARAGE ARE TO BE CONVEYED TO THE SANITARY SERVICE SANITARY FLOWS ARE TO BE PUMPED TO THE PROPOSED SANITARY SERVICE (TYP)
- PROPOSED SERVICES TO BE SLEEVED THROUGH FOUNDATION WALL. FOUNDATION DRAINS TO BE PUMPED TO STORM SERVICE.
- PROPOSED TRENCHDRAINS ARE TO BE CONVEYED TO THE FREE FLOWING STM OUTLET CONNECTION TO STMMH 85, REFER TO THE MECHANICAL DRAWINGS FOR DETAILS
- ROOF DOWNSPOUTS ARE TO BE DIRECTLY CONNECTED TO THE PROPOSED STORMWATER MANAGEMENT SYSTEM. REFER TO ARCHITECT AND MECHANICAL PLANS FOR DETAILS. REFER TO MECHANICAL DRAWINGS FOR FURTHER DETAILS ON INTERNAL PLUMBING (TYP).

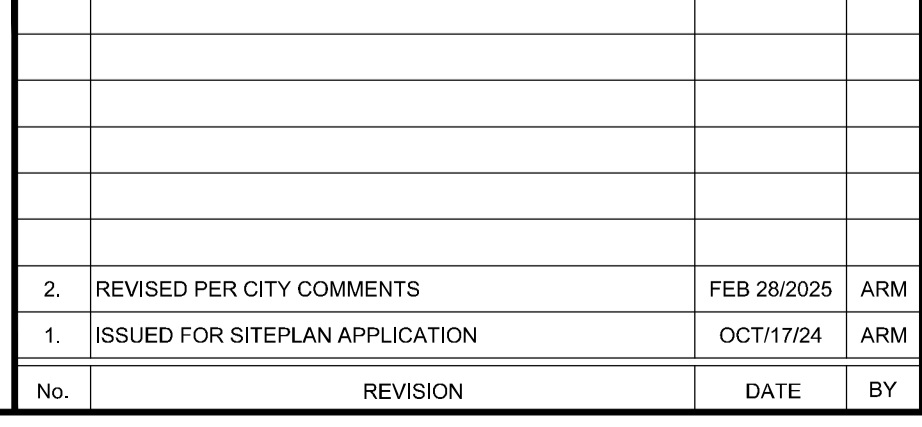
REFER TO 123194-ND FOR ADDITIONAL NOTES & DETAILS



NOTE:
THE POSITION OF ALL POLE LINES, CONDUITS, WATERMANS, SEWERS AND OTHER UNDERGROUNDS IS NOT NECESSARILY SHOWN ON THE CONTRACT DRAWINGS, AND WHERE SHOWN, THE ACCURACY OF THE POSITION OF SUCH UTILITIES AND STRUCTURES IS NOT GUARANTEED. BEFORE STARTING WORK, DETERMINE THE EXACT LOCATION OF ALL SUCH UTILITIES AND STRUCTURES AND ASSUME ALL LIABILITY FOR DAMAGE TO THEM.

NOT FOR CONSTRUCTION

No.	REVISION	DATE	BY
2.	REVISED PER CITY COMMENTS	FEB 28/2025	ARM
1.	ISSUED FOR SITEPLAN APPLICATION	OCT/17/24	ARM



FOR REVIEW ONLY

DESIGN	ARM
CHECKED	GJM
DRAWN	MF/ARM
CHECKED	ARM
APPROVED	GJM

Professional Engineer stamps for A.R. MESTWARP and G.J. MacDONALD, dated Feb. 28, 2025, Province of Ontario.

NOVATECH
Engineers, Planners & Landscape Architects
Suite 200, 240 Michael Cowpland Drive
Ottawa, Ontario, Canada K2M 1P6
Telephone: (613) 254-9643
Facsimile: (613) 254-5867
Website: www.novatech-eng.com

LOCATION: CITY OF OTTAWA, 425 CULDAFF ROAD
DRAWING NAME: GENERAL PLAN OF SERVICES
PROJECT No.: 123194
REV: REV#2
DRAWING No.: 123194-GP