

Copyright Reserved

The Contractor shall verify and be responsible for all dimensions. DO NOT locate the drawings - any errors or omissions shall be reported to Stantec without delay.
The Copyrights to all designs and drawings are the property of Stantec. Reproduction or use for any purpose other than that authorized by Stantec is forbidden.

Legend

- PROPOSED WATERMAIN
- PROPOSED VALVE AND VALVE BOX
- PROPOSED STORM SEWER
- PROPOSED STORM CHAMBER
- PROPOSED W3 CHAMBER
- PROPOSED REDUCER
- PROPOSED FIRE HYDRANT
- PROPOSED SANITARY SEWER
- PROPOSED STORM SEWER VALVE AND VALVE BOX
- PROPOSED STORM SEWER CATCHBASIN MANHOLE
- PROPOSED CATCHBASIN
- EXISTING VALVE AND VALVE BOX
- EXISTING VALVE CHAMBER
- EXISTING REDUCER
- EXISTING FIRE HYDRANT
- EXISTING COMBINED SEWER
- EXISTING STORM SEWER
- EXISTING CATCHBASIN MANHOLE
- EXISTING CATCHBASIN
- PROPOSED BARRIERS CURB LOCATIONS
- PROPOSED DAPPED CURB
- THERMAL INSULATION ON STORM SEWER WHERE COVER IS LESS THAN 2.0m AND ON SANITARY SEWER WHERE COVER IS LESS THAN 2.5m AS PER S35.
- WATER METER LOCATION AND NUMBER OF METERS
- HOSE BIB
- PROPOSED 2HR RATED FIRE WALL LOCATION
- BUILDING SERVICES
- 150mmØ SANITARY SEWER PVC SDR 28 @ 1% MIN
- 3 x 19mmØ PEW WATER SERVICE C/W CURB STOP AND SERVICE POST PER STACK UNLESS OTHERWISE SHOWN
- 200mmØ STORM SEWER PVC SDR 28 @ 1% MIN
- 0.60m BEHIND BACK OF CURB / SIDEWALK AS SHOWN ON PLAN

Notes

- FINAL METER AND REMOTE METER LOCATIONS TO BE CONFIRMED BY MECHANICAL CONSULTANT
- FINAL BUILDING SERVICE SIZES TO BE REVIEWED AND CONFIRMED BY MECHANICAL CONSULTANT.
- THE LOCATION AND ELEVATION OF SEWERS, WATERMAIN AND UTILITIES IS APPROXIMATE ONLY AND THE EXACT LOCATION AND ELEVATIONS SHOULD BE DETERMINED BY CONSULTING THE MUNICIPAL AUTHORITIES AND UTILITY COMPANIES CONCERNED. THE CONTRACTOR SHALL PROVE THE LOCATION AND ELEVATION OF SEWERS, WATERMANS AND UTILITIES AND SHALL BE RESPONSIBLE FOR THEIR PROTECTION AND THE IMPLEMENTATION OF ANY NECESSARY PROCEDURES CALLED FOR IN THE APPROPRIATE STANDARD AND REGULATIONS. ANY DISCREPANCY WITH THE INFORMATION SHOWN ON THESE PLANS SHALL BE REPORTED TO THE ENGINEER PRIOR TO CONTINUING WITH CONSTRUCTION.
- EXISTING SEWER INFORMATION PROVIDED FROM ENGINEERING DESIGN DRAWINGS PREPARED BY IBI. PLAN AND PROFILE DRAWINGS 100, 101, AND 102 REVISION 6, PROJECT NO. 125681

Revision	By	App'd.	Y/M/MD
1	MJS	DT	25.02.03
0	MJS	DT	24.11.11
2	MJS	DT	24.10.16
3	MJS	DT	24.10.16
4	MJS	DT	24.10.16

File Name: 160402058 DS.dwg

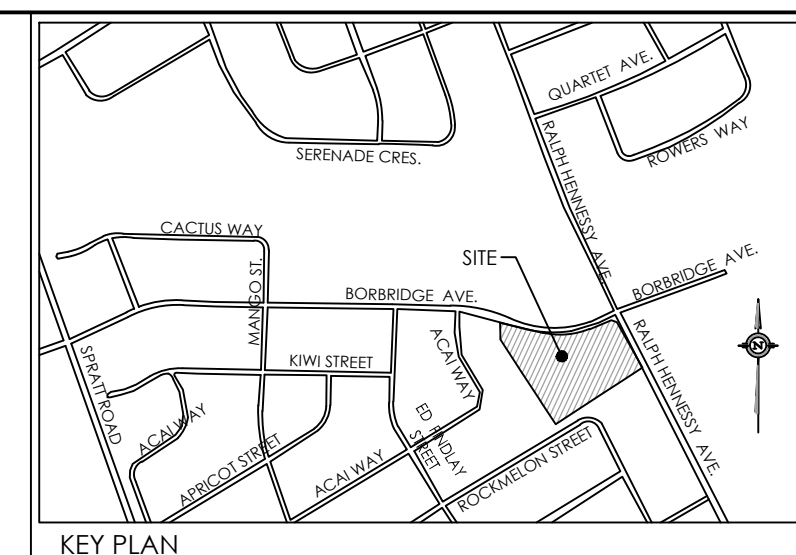
Permit-Seal

Client/Project
RICH CRAFT HOMES

**RIVERSIDE SOUTH BLOCK 167
955 BORBRIDGE AVENUE
OTTAWA, ON**

Title
SITE SERVICING PLAN

Project No. 160402058	Scale 1:400	Sheet 1	Revision 1
--------------------------	----------------	------------	---------------



200mmØ WATERMAIN TABLE A

STATION	FINISHED GRADE	TOP W/M	ITEM
0+000	97.47	95.27	200mmØ TEE CONNECTION TO EX.300mmØ PVC WATERMAIN
0+008.9	97.70	95.300	VALVE AND CHAMBER PER W32.1
0+013.1	97.75	95.350	11"Ø HORIZONTAL BEND
0+015.1	97.77	95.370	150mmØ FIRE HYDRANT TEE
0+019.1	97.77	95.370	22"Ø HORIZONTAL BEND
0+023.1	97.72	95.320	200mmØ x 200mmØ TEE
0+044.2	97.40	95.200	11"Ø HORIZONTAL BEND
0+048	97.37	95.190	200mmØ x 200mmØ TEE
0+054	97.38	95.180	200mmØ VALVE AND VALVE BOX
0+078	97.45	95.050	200mmØ x 200mmØ TEE
0+080.7	97.43	95.030	150mmØ FIRE HYDRANT TEE
0+093.4	97.34	94.940	22.5"Ø HORIZONTAL BEND
0+101.6	97.28	94.880	22.5"Ø HORIZONTAL BEND
0+108.9	97.29	94.890	45"Ø HORIZONTAL BEND
0+120	97.38	94.980	TOP OF PIPE
0+140	97.35	95.150	TOP OF PIPE
0+150.7	97.41	95.010	200mmØ VALVE AND VALVE BOX
0+153.7	97.38	94.980	200mmØ x 200mmØ TEE
0+160	97.36	94.960	TOP OF PIPE
0+163.4	97.39	94.990	150mmØ FIRE HYDRANT TEE
0+180	97.55	95.150	TOP OF PIPE
0+183.9	97.52	95.120	5"Ø HORIZONTAL BEND
0+186.9	97.51	95.110	200mmØ VALVE AND VALVE BOX
0+202.5	97.51	95.11	200mmØ TEE CONNECTION TO EX.300mmØ PVC WATERMAIN

200mmØ / 150mmØ WATERMAIN TABLE B

STATION	FINISHED GRADE	TOP W/M	ITEM
1+000	97.59	95.190	200mmØ x 200mmØ TEE
1+002	97.57	95.170	200mmØ VALVE AND VALVE BOX
1+003.6	97.54	95.140	22"Ø HORIZONTAL BEND
1+020	97.35	94.950	TOP OF PIPE
1+026.7	97.53	95.130	11"Ø HORIZONTAL BEND
1+051.4	97.56	95.160	150mmØ FIRE HYDRANT TEE
1+054.9	97.50	95.100	200mmØ x 200mmØ TEE
1+059.9	97.45	95.030	200mmØ x 150mmØ REDUCER
1+064.7	97.43	95.020	150mmØ VALVE AND VALVE BOX
1+080.2	97.50	95.100	150mmØ CAP AND THRUST BLOCK

200mmØ WATERMAIN TABLE C

STATION	FINISHED GRADE	TOP W/M	ITEM
2+000	97.50	95.100	200mmØ x 200mmØ TEE
2+003	97.48	95.080	11"Ø HORIZONTAL BEND
2+009	97.38	94.980	200mmØ VALVE AND VALVE BOX
2+020	97.27	94.870	TOP OF PIPE
2+038	97.35	94.950	200mmØ VALVE AND VALVE BOX
2+041	97.38	94.980	200mmØ x 200mmØ TEE

200mmØ WATERMAIN TABLE D

STATION	FINISHED GRADE	TOP W/M	ITEM
3+000	97.52	95.220	200mmØ CAP AND THRUST BLOCK
3+001	97.41	95.210	150mmØ FIRE HYDRANT TEE
3+017	97.40	95.200	200mmØ x 200mmØ TEE
3+035.2	97.78	95.380	11"Ø HORIZONTAL BEND
3+039.7	97.76	95.360	200mmØ VALVE AND VALVE BOX
3+048.7	97.72	95.320	200mmØ x 200mmØ TEE

200mmØ WATERMAIN TABLE E

STATION	FINISHED GRADE	TOP W/M	ITEM
4+000	97.53	95.130	200mmØ CAP AND THRUST BLOCK
4+009	97.50	95.080	TOP OF PIPE
4+023.9	97.53	95.130	45"Ø HORIZONTAL BEND
4+040.1	97.57	95.170	200mmØ VALVE AND VALVE BOX
4+041.6	97.40	95.200	200mmØ x 200mmØ TEE

200mmØ WATERMAIN TABLE F

STATION	FINISHED GRADE	TOP W/M	ITEM
5+000	97.52	95.120	200mmØ CAP AND THRUST BLOCK
5+000	97.43	95.030	TOP OF PIPE
5+033.3	97.59	95.190	200mmØ VALVE AND VALVE BOX
5+043.8	97.44	95.040	200mmØ x 200mmØ TEE

ICD TABLE

CATCHBASIN ID	TRIBUTARY AREA ID	ICD TYPE	2YR FLOW (L/S)	2YR VOL REQUIRED (m³)	2YR VOL AVAILABLE (m³)	100YR FLOW (L/S)	100YR VOL REQUIRED (m³)	100YR VOL AVAILABLE (m³)
CB 103A	I103A	140 mm ORRICE	43.4	0.0	49.6	52.4	44.2	49.6
CB 104A	I104A	102 mm ORRICE	23.9	0.2	33.6	26.0	26.4	33.6
CB 106A	I106A	140 mm ORRICE	45.2	0.0	83.5	52.8	47.1	83.5
CB 107A	I107A	108 mm ORRICE	26.5	0.0	50.8	29.5	28.5	50.8
CB 107B	I107B	102 mm ORRICE	15.0	0.0	19.8	22.0	13.0	19.8
CB 108A	I108A	102 mm ORRICE	23.0	0.0	37.3	26.4	22.9	37.3
CB 108B	I108B	102 mm ORRICE	3.5	0.0	2.1	7.4	0.0	2.1

SEWER AND WATER CROSSING TABLE

CROSSING	STM INV	STM OBV	SAN INV	SAN OBV	WTR TOP	WTR BTM	COMMENTS
▲	93.61(93.53)	94.06(94.14)	91.72	92.02			STORM CROSSING SANITARY
▲	93.63(93.55)	94.08(94.16)	93.39	93.59	95.34+	95.04+	STORM AND SANITARY CROSSING WATERMAIN
▲	93.73(93.65)	94.18(94.26)	94.71	94.91			STORM CROSSING SANITARY
▲	93.79(93.71)	94.24(94.32)	93.52	93.72	95.34	95.14	STORM AND SANITARY CROSSING WATERMAIN
▲	94.04	94.34	93.60	93.80			STORM CROSSING SANITARY
▲	94.07	94.37	93.67	93.87	95.20	95.00	STORM AND SANITARY CROSSING WATERMAIN
▲	94.43	94.81	93.83	94.03	95.51	95.31	STORM AND SANITARY CROSSING WATERMAIN
▲	94.44	94.82	93.91	94.11			STORM CROSSING SANITARY
▲	94.52	94.82	94.05	94.25			STORM CROSSING SANITARY
▲	94.53	94.83	94.01	94.21	95.53	95.33	STORM AND SANITARY CROSSING WATERMAIN
▲	94.27	94.52	94.88	95.08	95.78	95.58	STORM AND SANITARY CROSSING WATERMAIN
▲	92.30(92.15)	93.30(93.65)	93.69	93.94	95.06	94.86	WATERMAIN CROSSING STORM AND SANITARY

* BRACKETS DENOTE ADJUSTED VALUE WITH CONCRETE PIPE THICKNESS

V:\160402058\160402058.dwg
 2024/02/03 09:54 AM 160402058.dwg
 ORIGINAL SHEET - ARCH D