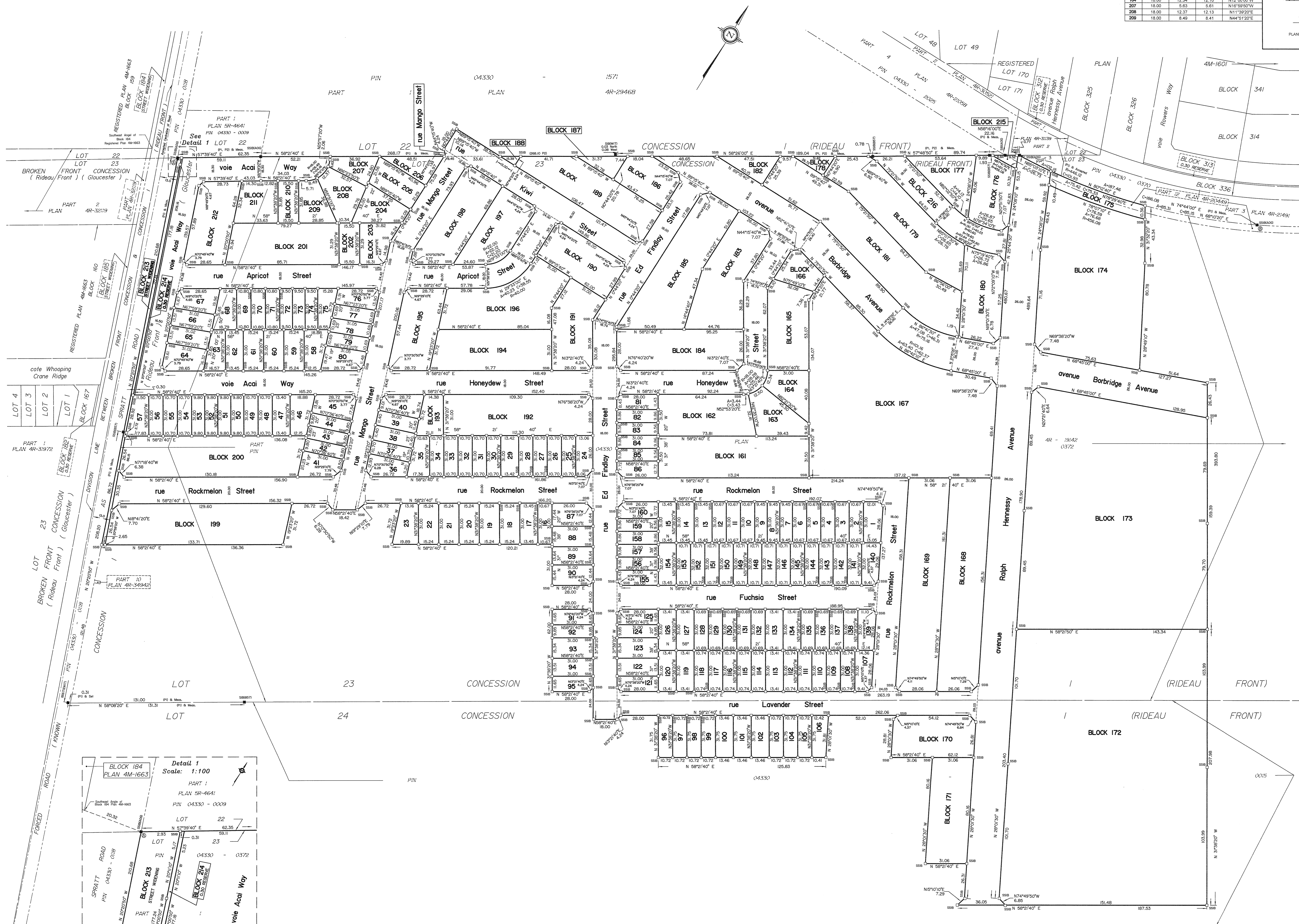


BLOCK	RADIUS	ARC	CHORD	BEARING
163	18.00	12.50	12.25	N27°31'50"E
164	18.00	12.34	12.10	N12°00'00"W
207	18.00	5.63	5.41	N16°59'00"W
208	18.00	12.37	12.13	N11°39'20"E
209	18.00	8.49	8.41	N44°51'20"E

APPROVED UNDER SECTION 51 OF THE PLANNING ACT BY THE CITY OF OTTAWA
 THIS 22nd DAY OF August 2023

[Signature]
 CORPORATE MANAGER, RPP,
 ACTING GENERAL MANAGER,
 PLANNING, REAL ESTATE AND ECONOMIC
 DEVELOPMENT DEPARTMENT
 CITY OF OTTAWA

PLAN 4M-1728
 I CERTIFY THAT THIS PLAN IS REGISTERED IN THE LAND REGISTRY OFFICE FOR THE LAND TITLES DIVISION OF OTTAWA (FILE NO. 4) AT 10:10 O'CLOCK ON THE 21st DAY OF September 2023
 AND ENTERED IN THE PAGES REGISTER FOR PROPERTY IDENTIFIERS 04330-0015, 04330-0372, 04330-1511, AND THE REQUIRED CONSENTS ARE REGISTERED AS PLAN DOCUMENT NO. 002635549
[Signature]
 REPRESENTATIVE FOR LAND REGISTRAR
 This plan comprises part of PINs 04330-0016, 04330-0372 and 04330-1511.



PLAN OF SUBDIVISION OF PART OF LOTS 22, 23 and 24 CONCESSION 1 (RIDEAU FRONT) Geographic Township of Gloucester CITY OF OTTAWA
 Surveyed by Annis, O'Sullivan, Vollebek Ltd.

Scale 1:1000
 Metric
 DISTANCES AND COORDINATES SHOWN ON THIS PLAN ARE IN METRES AND CAN BE CONVERTED TO FEET BY DIVIDING BY 0.3048.

Surveyor's Certificate
 I CERTIFY THAT:
 1. This survey and plan are correct and in accordance with the Surveys Act, the Surveyors Act and the Land Titles Act and the regulations made under them.
 2. The survey was completed on the 16th day of December, 2022.

Aug 8, 2023
[Signature]
 Ontario Land Surveyor

This plan of survey relates to AOLS Plan Submission Form Number V-40773

OWNER'S CERTIFICATE PIN 04330-0015 & PIN 04330-0372
 THIS IS TO CERTIFY THAT:
 1. Lots 1 to 160, both inclusive, Blocks 161 to 212, both inclusive, Block 215, Block 216, the Streets, namely, rue Acai Way, rue Apricot Street, avenue Borbridge Avenue, rue Ed Findlay Street, rue Fuchsia Street, rue Honeydew Street, part of rue Kiwi Street, rue Lavender Street, part of rue Mango Street, avenue Ralph Hennessy Avenue, rue Rockmelon Street, the Street Widening, namely, Block 213 and the Reserve, namely, Block 214, have been laid out in accordance with our instructions.
 2. The Streets and Street Widening are dedicated to City of Ottawa as public highways.

Dated the 8th day of August 2023
[Signature]
 Marcel Demerouti
 Authorized Signing Officer
 Riverside South Development Corp.
 I have authority to bind the corporation.

OWNER'S CERTIFICATE PIN 04330-1571
 THIS IS TO CERTIFY THAT:
 1. Part of rue Kiwi Street and part of rue Mango Street have been laid out in accordance with our instructions.
 2. The Streets are dedicated to City of Ottawa as public highways.

Dated the 8th day of August 2023
[Signature]
 Cláudia Gomes (Spart Road) Inc.
 I have authority to bind the corporation.

NOTES AND LEGEND

—□—	denotes	Survey Monument Planted
—●—	denotes	Survey Monument Found
—○—	denotes	Standard Iron Bar
—SSB—	denotes	Short Standard Iron Bar
—CC—	denotes	Cut Cross
—IB—	denotes	Iron Bar
—PB—	denotes	Plastic Bar
—CLF—	denotes	Chain Link Fence
—BF—	denotes	Board Fence
—P&W—	denotes	Post & Wire Fence
—(AOG)—	denotes	Annis, O'Sullivan, Vollebek Ltd.
—(P1)—	denotes	(AOG) Plan, June 21, 2021
—(P2)—	denotes	Plan 4R-29468

All planned survey monuments are IBS unless otherwise noted.
 Distances shown on curved limits are Arc distances unless otherwise noted.

Distances shown on this plan are ground distances and can be converted to grid distances by multiplying by the combined scale factor of 0.999943.

Bearings are grid, derived from Can-Net 2016 Real Time Network GPS observations on reference points A and B, shown hereon, having a bearing of N1°57'51"E and are referenced to Specified Control Points 01918791338 and 01918791649, MTM Zone 9 (78°30' West Longitude) NAD-83 (original).

Coordinates are derived from Can-Net 2016 Real Time Network GPS observations referenced to Specified Control Points 01918791338 and 01918791649, MTM Zone 9 (78°30' West Longitude) NAD-83 (original).

Coordinate values are to urban accuracy in accordance with O. Reg. 216/10.

01919791338	Northing	5009055.96	Eastings	346140.91
01918791649	Northing	5007189.87	Eastings	372435.05
Point A	Northing	5014228.72	Eastings	369708.70
Point B	Northing	5014610.16	Eastings	369423.00

Caution: Coordinates cannot, in themselves, be used to re-establish corners or boundaries shown on this plan.

