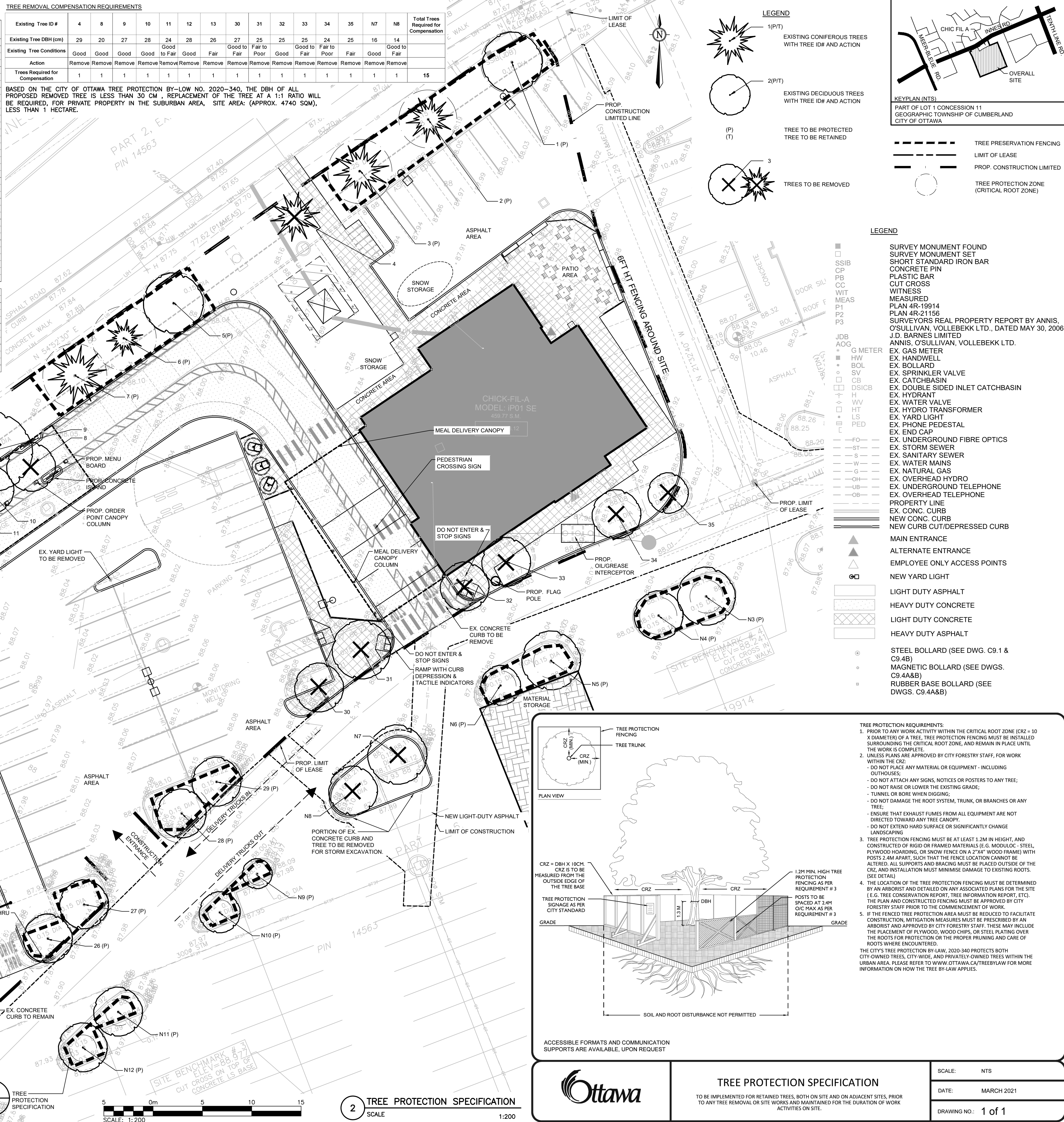


TREE INVENTORY CHART											
Project CFA Orleans											
Date of Field Work: August 23, 2023											
Tree ID#	Botanical name	Common name	Quantity	DBH (cm)	Crown (m)	CRZ-10x (m)	Ownership	Condition	Action	Injured	Reasons for Removal
1	<i>Tilia cordata</i>	Littleleaf Linden	1	30	6	3	ROW	Good	Protect	Yes	Yes
2	<i>Picea pungens</i>	Blue Spruce	1	28	5	2.8	ROW	Good	Protect	Yes	No
3	<i>Picea pungens</i>	Blue Spruce	1	31	5	3.1	ROW	Fair	Protect	Yes	No
4	<i>Picea pungens</i>	Blue Spruce	1	29	5	—	ROW	Good	Removed	Yes	No
5	<i>Tilia cordata</i>	Littleleaf Linden	1	30	6	3	ROW	Fair	Protect	Yes	No
6	<i>Picea pungens</i>	Blue Spruce	1	31	4	3.1	ROW	Good	Protect	Yes	Yes
7	<i>Picea pungens</i>	Blue Spruce	1	31	6	3.1	ROW	Good	Protect	Yes	Yes
8	<i>Gleditsia triacanthos</i>	Honey Locust	1	20	5	—	Private onsite	Good	Removed	—	Construction
9	<i>Tilia cordata</i>	Littleleaf Linden	1	27	8	—	Private onsite	Good	Removed	—	Construction
10	<i>Gleditsia triacanthos</i>	Honey Locust	1	28	5	—	Private onsite	Good	Removed	—	Construction
11	<i>Tilia cordata</i>	Littleleaf Linden	1	24	7	—	Private onsite	Good to fair	Removed	—	Construction
12	<i>Picea pungens</i>	Blue Spruce	1	28	4	2.8	Private onsite	Good	Removed	—	Construction
13	<i>Picea pungens</i>	Blue Spruce	1	26	3	2.6	Private onsite	Fair	Removed	—	Construction
14	<i>Picea pungens</i>	Blue Spruce	1	25	5	2.5	Private onsite	Fair	Protect	Yes	No
15	<i>Picea pungens</i>	Blue Spruce	1	36	4	3.6	Private onsite	Good	Protect	Yes	No
16	<i>Gleditsia triacanthos</i>	Honey Locust	1	20	5	2	Private onsite	Fair	Protect	Yes	No
17	<i>Gleditsia triacanthos</i>	Honey Locust	1	20	5	2	Private onsite	Fair	Protect	Yes	No
18	<i>Gleditsia triacanthos</i>	Honey Locust	1	14	3	1.4	Private onsite	Good	Protect	Yes	No
19	<i>Gleditsia triacanthos</i>	Honey Locust	1	16	4	1.6	Private onsite	Good	Protect	Yes	No
20	<i>Gleditsia triacanthos</i>	Honey Locust	1	16	5	1.6	Private onsite	Good	Protect	No	No
21	<i>Gleditsia triacanthos</i>	Honey Locust	1	14	4	1.4	Private onsite	Good	Protect	No	No
22	<i>Gleditsia triacanthos</i>	Honey Locust	1	13	4	1.3	Private onsite	Fair	Protect	No	No
23	<i>Gleditsia triacanthos</i>	Honey Locust	1	16	4	1.6	Private onsite	Good	Protect	No	No
24	<i>Gleditsia triacanthos</i>	Honey Locust	1	13	6	1.3	Private onsite	Fair	Protect	No	No
25	<i>Gleditsia triacanthos</i>	Honey Locust	1	15	6	1.5	Private on adjacent Site	Good	Protect	Yes	No
26	<i>Gleditsia triacanthos</i>	Honey Locust	1	24	5	2.4	Private onsite	Good	Protect	Yes	No
27	<i>Gleditsia triacanthos</i>	Honey Locust	1	24	5	2.4	Private onsite	Good	Protect	Yes	No
28	<i>Gleditsia triacanthos</i>	Honey Locust	1	28	5	2.8	Private onsite	Good	Protect	Yes	No
29	<i>Gleditsia triacanthos</i>	Honey Locust	1	25	5	2.5	Private onsite	Good	Protect	Yes	No
30	<i>Gleditsia triacanthos</i>	Honey Locust	1	27	5	—	Private onsite	Good to fair	Removed	—	Construction
31	<i>Gleditsia triacanthos</i>	Honey Locust	1	25	6	—	Private onsite	Fair to poor	Removed	—	Construction
32	<i>Gleditsia triacanthos</i>	Honey Locust	1	25	5	—	Private onsite	Good	Removed	—	Construction
33	<i>Gleditsia triacanthos</i>	Honey Locust	1	25	5	—	Private onsite	Good to fair	Removed	—	Construction
34	<i>Gleditsia triacanthos</i>	Honey Locust	1	24	5	—	Private onsite	Fair to poor	Removed	—	Construction
35	<i>Gleditsia triacanthos</i>	Honey Locust	1	25	4	—	Private onsite	Fair	Removed	—	Construction

TREE REMOVAL COMPENSATION REQUIREMENTS																
Existing Tree ID #	4	8	9	10	11	12	13	30	31	32	33	34	35	N7	N8	Total Trees Required for Compensation
Existing Tree DBH (cm)	29	20	27	28	24	28	26	27	25	25	25	24	24	25	16	14
Existing Tree Conditions	Good	Good	Good	Good	Fair	Good	Fair	Good	Fair	Poor	Good	Fair	Fair	Fair	Good	Fair
Action	Remove	Remove	Remove	Remove	Remove	Remove	Remove	Remove	Remove	Remove	Remove	Remove	Remove	Remove	Remove	Remove
Trees Required for Compensation	1	1	1	1	1	1	1	1	1	1	1	1	1	1	1	15

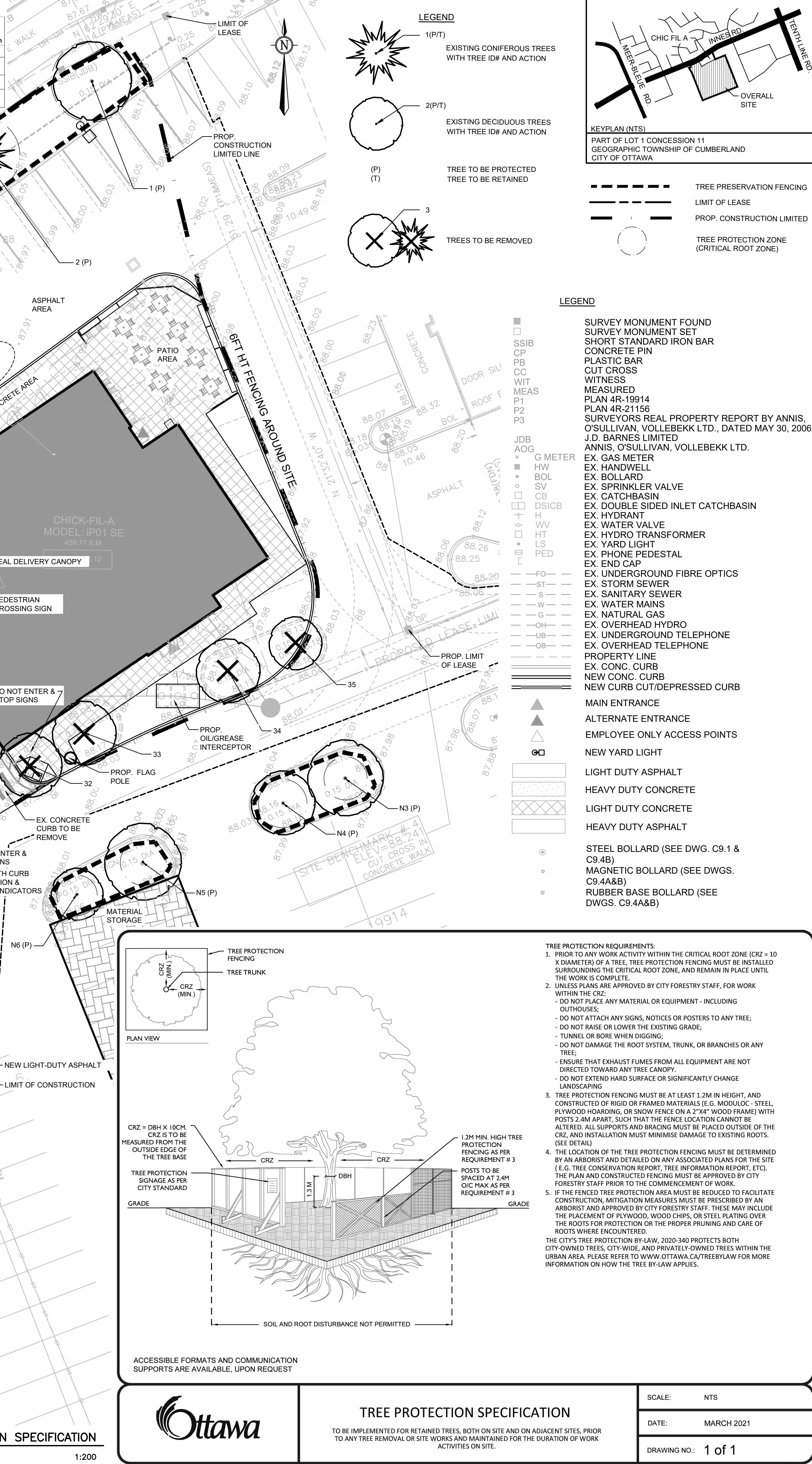
BASED ON THE CITY OF OTTAWA TREE PROTECTION BY-LAW NO. 2020-340, THE DBH OF ALL PROPOSED REMOVED TREE IS LESS THAN 30 CM, REPLACEMENT OF THE TREE AT A 1:1 RATIO WILL BE REQUIRED FOR PRIVATE PROPERTY IN THE SUBURBAN AREA, SITE AREA: (APPROX. 4740 SQM), LESS THAN 1 HECTARE.

NEIGHBOR TREES											
Tree ID#	Botanical name	Common name	Quantity	DBH (cm)	Crown (m)	CRZ-10x (m)	Ownership	Condition	Action	Injured	Reasons for Removal
N1	<i>Gleditsia triacanthos</i>	Honey Locust	1	13	3	1.3	Private on adjacent Site	Good	Retain	No	No
N2	<i>Gleditsia triacanthos</i>	Honey Locust	1	16	6	1.6	Private on adjacent Site	Fair	Protect	No	No
N3	<i>Gleditsia triacanthos</i>	Honey Locust	1	16	6	1.6	Private on adjacent Site	Fair	Protect	No	No
N4	<i>Gleditsia triacanthos</i>	Honey Locust	1	18	5	1.8	Private on adjacent Site	Fair	Protect	No	No
N5	<i>Gleditsia triacanthos</i>	Honey Locust	1	17	6	1.7	Private on adjacent Site	Fair	Protect	No	No
N6	<i>Gleditsia triacanthos</i>	Honey Locust	1	17	6	1.7	Private on adjacent Site	Fair	Protect	No	No
N7	<i>Gleditsia triacanthos</i>	Honey Locust	1	16	6	—	Private on adjacent Site	Good	Removed	—	Construction
N8	<i>Gleditsia triacanthos</i>	Honey Locust	1	14	5	—	Private on adjacent Site	Good to fair	Removed	—	Construction
N9	<i>Gleditsia triacanthos</i>	Honey Locust	1	11	3	1.1	Private on adjacent Site	Good	Protect	No	No
N10	<i>Gleditsia triacanthos</i>	Honey Locust	1	12	4	1.2	Private on adjacent Site	Fair	Protect	No	No
N11	<i>Gleditsia triacanthos</i>	Honey Locust	1	13	5	1.3	Private on adjacent Site	Fair	Protect	No	No
N12	<i>Gleditsia triacanthos</i>	Honey Locust	1	13	5	1.3	Private on adjacent Site	Fair	Protect	No	No




1 TREE PROTECTION PLAN SCALE 1:200

2 TREE PROTECTION SPECIFICATION SCALE 1:200




3 TREE PROTECTION SPECIFICATION SCALE 1:200




Chick-fil-A
5200 Buffington Road
Atlanta, Georgia 30349-2998

exp Services Inc.
t: +1.905.793.9800 | f: +1.905.793.0641
1595 Clark Boulevard
Brampton, ON L6T 4V1
Canada
www.exp.com



• BUILDINGS • EARTH & ENVIRONMENT • ENERGY •
• INDUSTRIAL • INFRASTRUCTURE • SUSTAINABILITY



CHICK-FIL-A
ORLEANS
4270 Innes Road
Ottawa, ON

FSR#30042
BUILDING TYPE / SIZE: IP01 SE
RELEASE: XXXXXXXX

REVISION SCHEDULE

NO.	DATE	DESCRIPTION
A	2024/10/04	ISSUED FOR SPA
B	2025/01/24	ISSUED FOR SPA
C	2025/02/21	ISSUED FOR SPA

CONSULTANT PROJECT # BRM0023002042-HO
PROJECT STATUS SPA
DATE MAY 2023
DRAWN BY L.Z.

Information contained on this drawing and in all digital files produced for above named project may not be reproduced in any manner without express written or verbal consent from authorized project representatives.

TREE PROTECTION PLAN
SHEET NUMBER
TPP

E:\BIRM\BIRM-23002042-HO\60 Execution\65 Drawings\23002042-HO-TPP-RE.dwg
21 February 2025