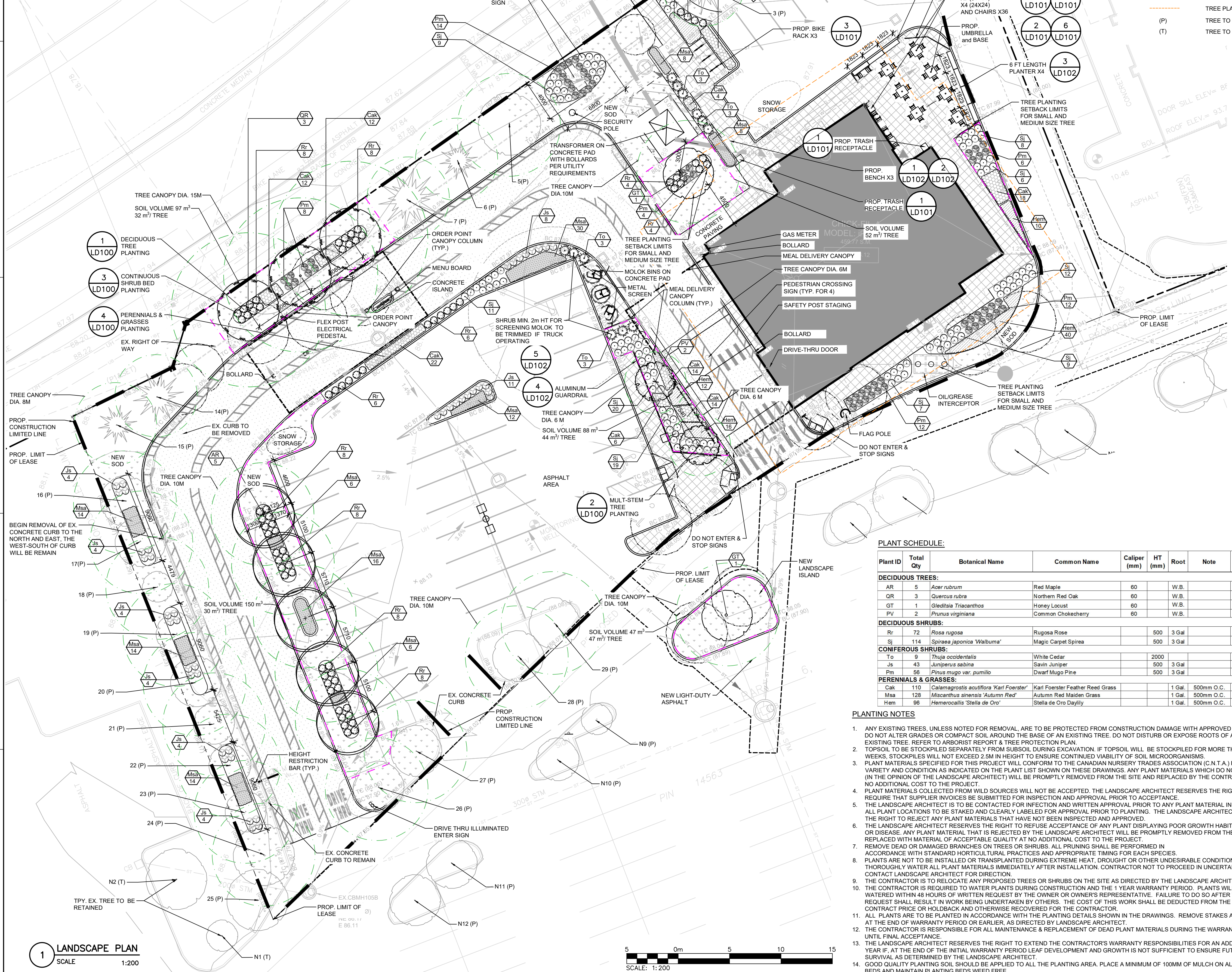


CANOPY COVER AREA IN 40 YEARS

Plant ID	Total Qty	Botanical Name	Common Name	Tree Stature	Canopy Spread (m)	Height (m)	Tree Canopy Diameter in 40 years (m)	Canopy Area Without Overlapping On Site (m ²)	Canopy Area With Bonus Factor 1.5 (m ²)	Subtotal Canopy Area (m ²)	Tree Planting Setback Per Geotechnical Report (m)	Soil Volume Per Tree (m ³)	Ownership
PROPOSED DECIDUOUS TREES:													
AR	5	<i>Acer rubrum</i>	Red Maple	Large	9-15m	12-18m	15	265.6	—	15	30	Private onsite	
QR	3	<i>Quercus rubra</i>	Northern Red Oak	Large	15-20m	15-25m	15	236.1	—	15	32	ROW	
GT	1	<i>Gleditsia triacanthos</i>	Honey Locust	Medium	10-12m	12-20m	10	78.3	—	4.5	47	Private onsite	
PV	2	<i>Prunus virginiana</i>	Common Chokecherry	Small	5-6m	12-20m	6	56.5	—	4.5	44	Private onsite	
RETAINED AND PROTECTED EXISTING DECIDUOUS TREE													
#1	1	<i>Lilac cordata</i>	Littleleaf Linden	Medium	8-12m	—	10	55.8	83.7	—	—	ROW	
#5	1	<i>Lilac cordata</i>	Littleleaf Linden	Medium	8-12m	—	10	56.9	85.4	861.3	—	ROW	
#13	13	<i>Gleditsia triacanthos</i>	Honey Locust	Medium	10-12m	—	10	461.5	692.3	—	—	Private onsite	
RETAINED AND PROTECTED EXISTING CONIFEROUS TREE													
#2	2	<i>Picea canadensis</i>	Blue Spruce	Large	6-10m	—	8	78.3	117.5	—	—	ROW	
#6	6	<i>Picea canadensis</i>	Blue Spruce	Large	6-10m	—	8	52.4	78.6	295.6	—	ROW	
#14	14	<i>Picea canadensis</i>	Blue Spruce	Large	6-10m	—	8	66.5	99.6	—	—	Private onsite	
Canopy Total									1783.6	28%			
Total Site Area (m²)									4740	100%			

NOTES:
 1. EXISTING CANOPY COVERAGE FROM TREES LOCATED ON THE SUBJECT SITE CAN BE CREDITED WITH A BONUS FACTOR BY MULTIPLYING THE EXISTING COVERAGE OVER THE SITE BY 1.5. (REFERENCE TOWN OF OAKVILLE TREE CANOPY CALCULATION DIRECTED UNDER CITY'S COMMENTS)
 2. THE COLORED TREE CANOPY PLAN IS INCLUDED AS APPENDIX D IN THE ARBORIST REPORT.



1 LANDSCAPE PLAN
SCALE 1:200

LEGEND:

- EX. TREE TO BE RETAINED
 - PROP. DECIDUOUS TREES
 - PROP. CONIFEROUS SHRUBS
 - PROP. DECIDUOUS SHRUBS
 - PROP. PERENNIALS
 - PROP. SOD
 - PROP. TREES APPROX. CANOPY TO 40 YEARS
 - PROP. TREES SOIL VOLUME AREA SOIL DEPTH 1 M
 - TREE PLANTING SETBACK
 - TREE TO BE PROTECTED
 - TREE TO BE RETAINED
-
- SSIB
 - CP
 - PB
 - CB
 - WIT
 - MEAS
 - P1
 - P2
 - P3
- SURVEY MONUMENT FOUND
 SURVEY MONUMENT SET
 SHORT STANDARD IRON BAR
 CONCRETE PIN
 PLASTIC PIN
 CUT CROSS
 WITNESS
 MEASURED
 PLAN 4R-19814
 PLAN 4R-21156
 SURVEYORS REAL PROPERTY REPORT BY ANNIS, O'SULLIVAN, VOLLEBECK LTD., DATED MAY 30, 2006
 ANNIS, O'SULLIVAN, VOLLEBECK LTD.
- G METER
 - HW
 - BOL
 - SV
 - CB
 - DSICB
 - H
 - WV
 - HT
 - LS
 - PED
- EX. GAS METER
 EX. HANDWELL
 EX. BOLLARD
 EX. SPRINKLER VALVE
 EX. CATCHBASIN
 EX. DOUBLE SIDED INLET CATCHBASIN
 EX. HYDRANT
 EX. WATER VALVE
 EX. HYDRO TRANSFORMER
 EX. CONC. CURB
 EX. PHONE PEDESTAL
 EX. END CAP
 EX. UNDERGROUND FIBRE OPTICS
 EX. STORM SEWER
 EX. SANITARY SEWER
 EX. BEL SERVICIS
 EX. NATURAL GAS
 EX. OVERHEAD HYDRO
 EX. UNDERGROUND TELEPHONE
 EX. OVERHEAD TELEPHONE
- ST
 - S
 - W
 - G
 - UH
 - UB
 - OB
- NEW STORM SEWER
 NEW SANITARY SEWER
 NEW WATER SERVICE
 NEW GAS SERVICE
 NEW HYDRO SERVICE
 NEW BEL SERVICE
 PROPOSED ELEVATION
 EX. ELEVATION
 NEW SLOPE
 EX. CONTOUR
- DO NOT ENTER & STOP SIGNS
 - SCOPE OF WORK BOUNDARY
 - EX. STORM LINE REMOVAL
 - PROP. WATER VALVE
 - PIPE INSULATION
 - HEAVY DUTY CONCRETE
 - LIGHT DUTY CONCRETE
 - STEEL BOLLARD (SEE DWG. C9.1 & C9.4B)
 - MAGNETIC BOLLARD (SEE DWGS. C9.4A&B)
 - RUBBER BASE BOLLARD (SEE DWGS. C9.4A&B)

NOTES FOR GEOTECHNICAL INVESTIGATION REPORT:

THE LANDSCAPE PLAN HAS BEEN PREPARED IN CONJUNCTION WITH 'GEOTECHNICAL INVESTIGATION REPORT' PG7345-1 DATED DECEMBER 12, 2024 BY PATERSON GROUP

PAGE 20, SECTION 6.8 LANDSCAPING CONSIDERATION

TREE PLANTING SETBACK LIMITS MAY BE REDUCED TO 4.5 M FOR SMALL (MATURE TREE HEIGHT UP TO 7.5M) AND MEDIUM SIZE TREES (MATURE TREE HEIGHT 7.5 M TO 14 M). LARGE TREES (MATURE TREE HEIGHT OVER 14 M) CAN BE PLANTED WITHIN THESE AREAS PROVIDED THAT A TREE TO FOUNDATION SETBACK EQUAL TO THE FULL MATURE HEIGHT OF THE TREE CAN BE PROVIDED.

SODDING NOTES:

- SODDED AREAS AS SHOWN ON THE PLANTING PLAN ARE TO BE CERTIFIED CANADA NO. 1 CULTIVATED TURF SOD WITH STRONG FIBROUS ROOT SYSTEM, THICK AND HEAVY GROWTH CONFORMING TO REQUIREMENTS OF NURSERY SOD GROWERS ASSOCIATION OF ONTARIO AND OF THE FOLLOWING MIX OR APPROVED EQUAL:
 - 20% KENTUCKY BLUEGRASS
 - 60% BLEND OF CREEPING RED FESCUE, CHEWING FESCUE, HARD FESCUE AND SHEEP FESCUE
 - 20% PERENNIAL RYEGRASS USE LATEST APPROVED CULTIVARS OF GRASS IN ONTARIO AREAS TO BE SODDED SHALL HAVE A MIN. 200mm TOPSOIL BASE.
- LOOSEN SOIL SURFACE PRIOR TO SODDING. ELIMINATE BUMPS AND HOLLOW SPOTS. ROLL LIGHTLY WHEREVER TOPSOIL IS EXCESSIVELY LOOSE.
- PRIOR TO SODDING, OBTAIN APPROVAL THAT FINISHED GRADE AND DEPTH AND COMPACTION RATES OF TOPSOIL ARE SATISFACTORY.
- DELIVER SOD TO SITE WITHIN 24 HOURS OF BEING LIFTED AND LAY WITHIN 36 HOURS OF BEING LIFTED. DURING DRY WEATHER PROTECT SOD FROM DRYING, AND WATER SOD AS NECESSARY TO ENSURE ITS VITALITY AND PREVENT THE LOSS OF SOIL IN HANDLING. DRY SOD WILL BE REJECTED.
- LAY SOD DURING GROWING SEASON. LAY SOD IN ROWS, PERPENDICULAR TO SLOPE, AND WITH JOINTS STAGGERED. BUTT SECTIONS CLOSELY WITHOUT OVERLAPPING OR LEAVING GAPS BETWEEN SECTIONS. CUT OUT IRREGULAR OR THIN SECTIONS WITH SHARP IMPLEMENTS.
- WATER SOD IMMEDIATELY AFTER LAYING TO OBTAIN MOISTURE PENETRATION INTO TOP MIN.200mm OF TOPSOIL. MAINTAIN SODDED AREAS FROM START OF INSTALLATION UNTIL FINAL ACCEPTANCE.

PLANT SCHEDULE:

Plant ID	Total Qty	Botanical Name	Common Name	Caliper (mm)	HT (mm)	Root	Note	Native or Non-Native
DECIDUOUS TREES:								
AR	5	<i>Acer rubrum</i>	Red Maple	60		W.B.		Yes
QR	3	<i>Quercus rubra</i>	Northern Red Oak	60		W.B.		Yes
GT	1	<i>Gleditsia triacanthos</i>	Honey Locust	60		W.B.		No
PV	2	<i>Prunus virginiana</i>	Common Chokecherry	60		W.B.		Yes
DECIDUOUS SHRUBS:								
Rr	72	<i>Rosa rugosa</i>	Rugosa Rose		500	3 Gal		No
Sj	114	<i>Spiraea japonica 'Walburna'</i>	Magic Carpet Spiraea		500	3 Gal		No
To	9	<i>Thuja occidentalis</i>	White Cedar		2000			Yes
Js	43	<i>Juniperus sabina</i>	Savin Juniper		500	3 Gal		No
Pm	56	<i>Pinus mugo var. pumilio</i>	Dwarf Mugo Pine		500	3 Gal		No
PERENNIALS & GRASSES:								
Cak	110	<i>Calamagrostis acutiflora 'Karl Foerster'</i>	Karl Foerster Feather Reed Grass		1 Gal	500mm O.C.		No
Msa	128	<i>Miscanthus sinensis 'Autumn Red'</i>	Autumn Red Maiden Grass		1 Gal	500mm O.C.		No
Hem	96	<i>Hemerocallis 'Stella de Oro'</i>	Stella de Oro Daylily		1 Gal	500mm O.C.		No

PLANTING NOTES:

- ANY EXISTING TREES, UNLESS NOTED FOR REMOVAL, ARE TO BE PROTECTED FROM CONSTRUCTION DAMAGE WITH APPROVED FENCING. DO NOT ALTER GRADES OR COMPACT SOIL AROUND THE BASE OF AN EXISTING TREE. DO NOT DISTURB OR EXPOSE ROOTS OF ANY EXISTING TREE. REFER TO ARBORIST REPORT & TREE PROTECTION PLAN.
- TOPSOIL TO BE STOCKPILED SEPARATELY FROM SUBSOIL DURING EXCAVATION. IF TOPSOIL WILL BE STOCKPILED FOR MORE THAN 4 WEEKS, STOCKPILES WILL NOT EXCEED 2.5M IN HEIGHT TO ENSURE CONTINUED VIABILITY OF SOIL MICROORGANISMS.
- PLANT MATERIALS SPECIFIED FOR THIS PROJECT WILL CONFORM TO THE CANADIAN NURSERY TRADES ASSOCIATION (C.N.T.A.) FOR SIZE, VARIETY AND CONDITION AS INDICATED ON THE PLANT LIST SHOWN ON THESE DRAWINGS. ANY PLANT MATERIALS WHICH DO NOT CONFORM (IN THE OPINION OF THE LANDSCAPE ARCHITECT) WILL BE PROMPTLY REMOVED FROM THE SITE AND REPLACED BY THE CONTRACTOR AT NO ADDITIONAL COST TO THE PROJECT.
- PLANT MATERIALS COLLECTED FROM WILD SOURCES WILL NOT BE ACCEPTED. THE LANDSCAPE ARCHITECT RESERVES THE RIGHT TO REQUIRE THAT SUPPLIER INVOICES BE SUBMITTED FOR INSPECTION AND APPROVAL PRIOR TO ACCEPTANCE.
- THE LANDSCAPE ARCHITECT RESERVES THE RIGHT TO REFUSE ACCEPTANCE OF ANY PLANT DISPLAYING POOR GROWTH HABITS, INJURY OR DISEASE. ANY PLANT MATERIAL THAT IS REJECTED BY THE LANDSCAPE ARCHITECT WILL BE PROMPTLY REMOVED FROM THE SITE AND REPLACED WITH MATERIAL OF ACCEPTABLE QUALITY AT NO ADDITIONAL COST TO THE PROJECT.
- REMOVE DEAD OR DAMAGED BRANCHES ON TREES OR SHRUBS. ALL PRUNING SHALL BE PERFORMED IN ACCORDANCE WITH STANDARD HORTICULTURAL PRACTICES AND APPROPRIATE TIMING FOR EACH SPECIES.
- PLANTS ARE NOT TO BE INSTALLED OR TRANSPLANTED DURING EXTREME HEAT, DROUGHT OR OTHER UNDESIRABLE CONDITIONS. THOROUGHLY WATER ALL PLANT MATERIALS IMMEDIATELY AFTER INSTALLATION. CONTRACTOR NOT TO PROCEED IN UNCERTAINTY. CONTACT LANDSCAPE ARCHITECT FOR DIRECTION.
- THE CONTRACTOR IS TO RELOCATE ANY PROPOSED TREES OR SHRUBS ON THE SITE AS DIRECTED BY THE LANDSCAPE ARCHITECT.
- THE CONTRACTOR IS REQUIRED TO WATER PLANTS DURING CONSTRUCTION AND THE 1 YEAR WARRANTY PERIOD. PLANTS WILL BE WATERED WITHIN 48 HOURS OF WRITTEN REQUEST BY THE OWNER OR OWNER'S REPRESENTATIVE. FAILURE TO DO SO AFTER THE SECOND REQUEST SHALL RESULT IN WORK BEING UNDERTAKEN BY OTHERS. THE COST OF THIS WORK SHALL BE DEDUCTED FROM THE TOTAL CONTRACT PRICE OR HOLDBACK AND OTHERWISE RECOVERED FOR THE CONTRACTOR.
- ALL PLANTS ARE TO BE PLANTED IN ACCORDANCE WITH THE PLANTING DETAILS SHOWN IN THE DRAWINGS. REMOVE STAKES AND WIRES AT THE END OF WARRANTY PERIOD OR EARLIER, AS DIRECTED BY LANDSCAPE ARCHITECT.
- THE CONTRACTOR IS RESPONSIBLE FOR ALL MAINTENANCE & REPLACEMENT OF DEAD PLANT MATERIALS DURING THE WARRANTY PERIOD UNTIL FINAL ACCEPTANCE.
- THE LANDSCAPE ARCHITECT RESERVES THE RIGHT TO EXTEND THE CONTRACTOR'S WARRANTY RESPONSIBILITIES FOR AN ADDITIONAL YEAR IF, AT THE END OF THE INITIAL WARRANTY PERIOD LEAF DEVELOPMENT AND GROWTH IS NOT SUFFICIENT TO ENSURE FUTURE SURVIVAL AS DETERMINED BY THE LANDSCAPE ARCHITECT.
- GOOD QUALITY PLANTING SOIL SHOULD BE APPLIED TO ALL THE PLANTING AREA. PLACE A MINIMUM OF 100MM OF MULCH ON ALL PLANTING BEDS AND MAINTAIN PLANTING BEDS WELD FREE.



Chick-fil-A
 5200 Buffington Road
 Atlanta, Georgia 30349-2998

exp Services Inc.
 T: +1.905.793.9800 | F: +1.905.793.0641
 1595 Clark Boulevard
 Brampton, ON L6T 4V1
 Canada
 www.exp.com



- BUILDINGS • EARTH & ENVIRONMENT • ENERGY • INDUSTRIAL • INFRASTRUCTURE • SUSTAINABILITY

Disclaimer: exp Services Inc.
 This file is being supplied as a matter of courtesy and is not to be taken as appurtenant to, associated with or in placement of copies of the officially signed and sealed documents. The data is provided "as is" without a warranty of any kind either expressed or implied. This file does not include a professional engineer's stamp on the drawings, and only print copies of drawings with signed stamps are to be considered as true and final as issued by our office. Thank you.



CHICK-FIL-A
ORLEANS
 4270 Innes Road
 Ottawa, ON

FSR#30042

BUILDING TYPE / SIZE: IP01 SE
 RELEASE: XXXXXXXX

REVISION SCHEDULE

NO.	DATE	DESCRIPTION
A	2024-10-04	ISSUED FOR SPA
B	2025-01-24	ISSUED FOR SPA
C	2025-02-21	ISSUED FOR SPA

CONSULTANT PROJECT # BRM0023002042-HO
 PROJECT STATUS SPA
 DATE MAY 2023
 DRAWN BY L.Z.

Information contained on this drawing and in all digital files produced for above named project may not be reproduced in any manner without express written or verbal consent from authorized project representatives.
 SHEET

LANDSCAPE PLAN

SHEET NUMBER

L100