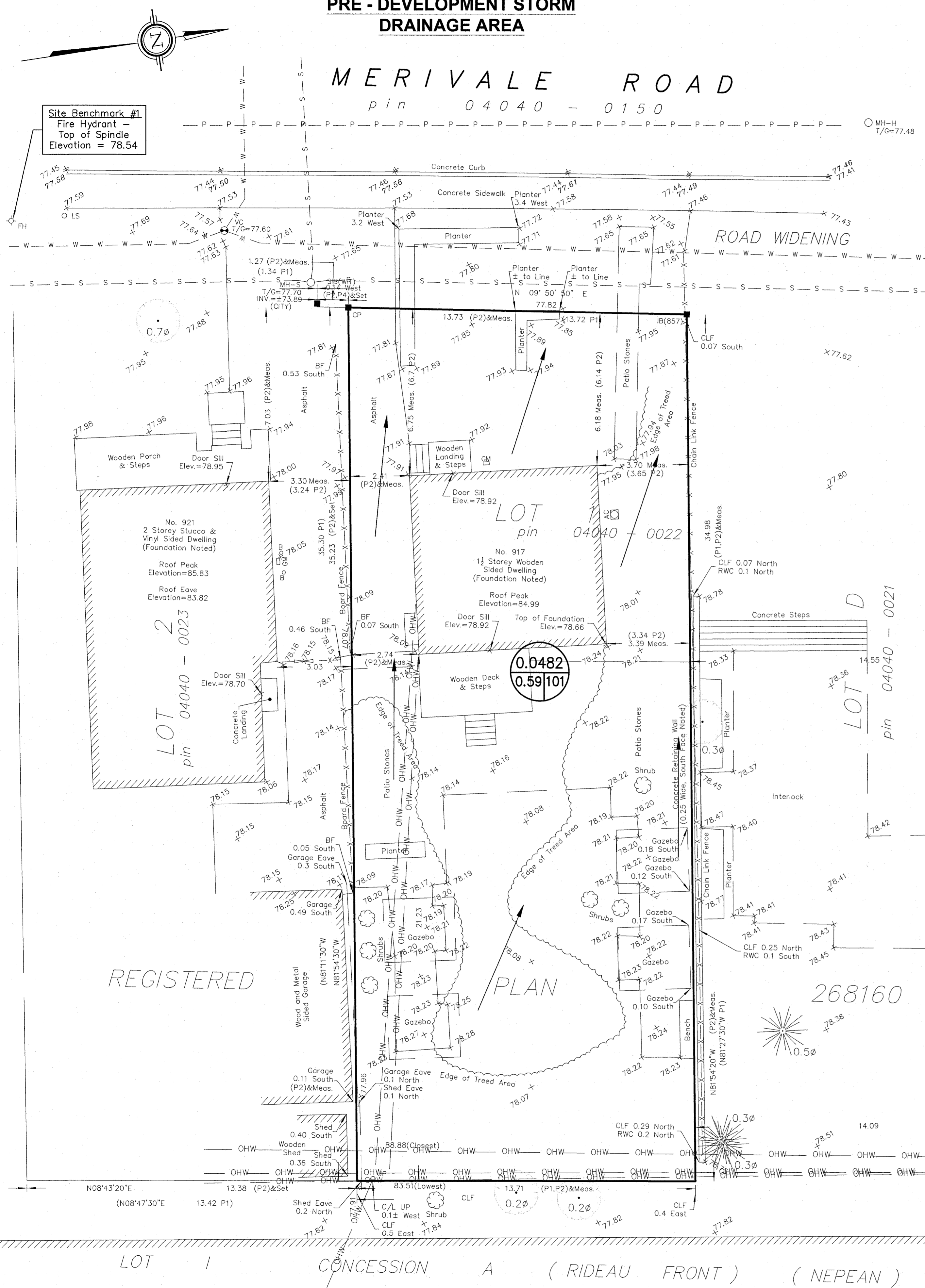


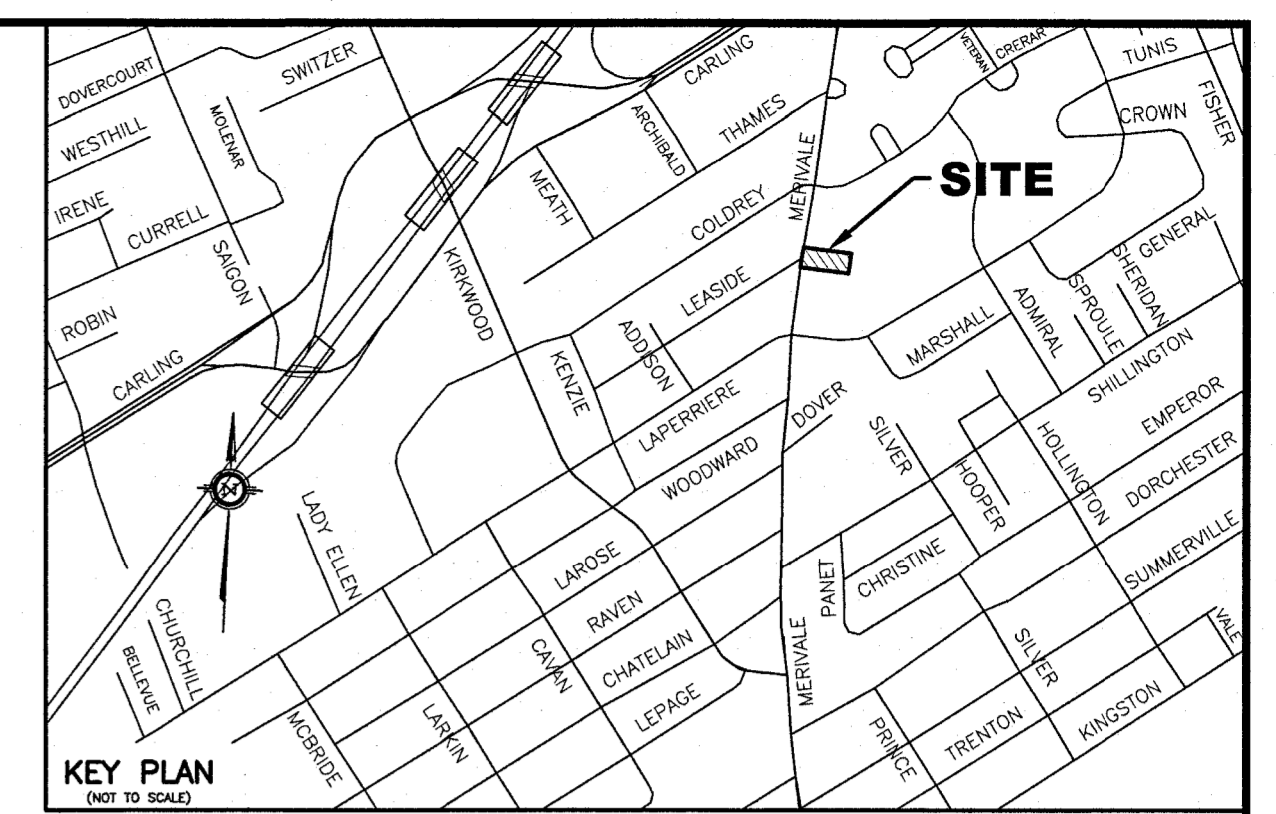
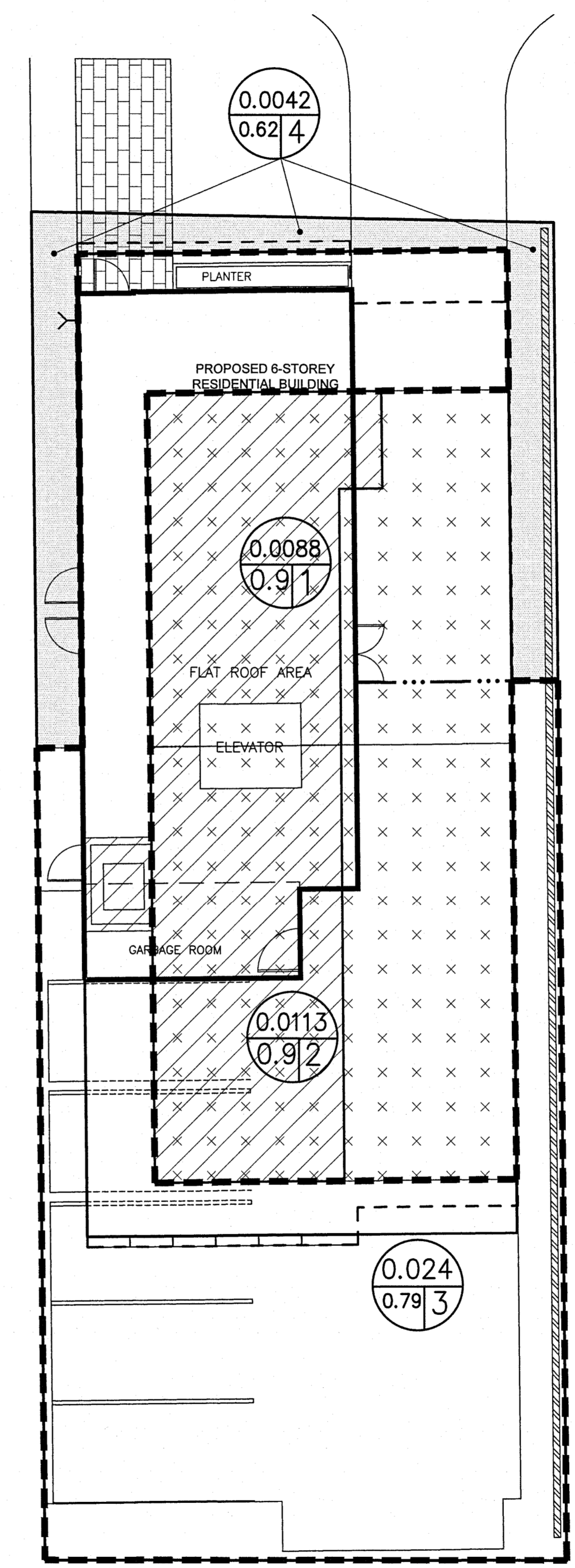
PRE - DEVELOPMENT STORM DRAINAGE AREA

MERIVALE ROAD
pin 04040 - 0150



POST DEVELOPMENT STORM DRAINAGE AREA

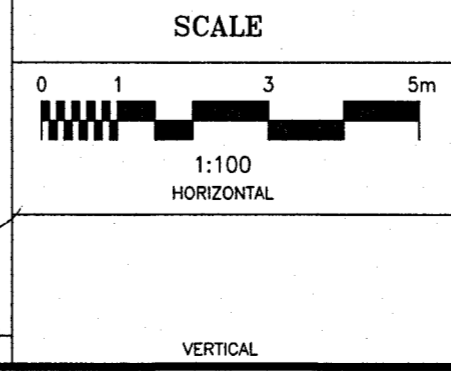
MERIVALE ROAD



- LEGEND**
- RD#1 PROPOSED ROOF DRAIN NUMBER AND LOCATION
 - SC PROPOSED ROOF SCUPPER LOCATION
 - — — PROPOSED HIGH RIDGE LINE
 - (0.03/0.91) DRAINAGE AREA IN HECTARES
DRAINAGE NODE NUMBER
 - COEFFICIENT OF RUNOFF
 - UN-CONTROLLED DRAINAGE AREA
 - ▨ CONTROLLED DRAINAGE AREA
 - — — DENOTES LIMIT OF CONTROLLED DRAINAGE AREA

- NOTES**
- NODE #1 AND NODE #2 REPRESENTS BUILDING ROOF AREA (SWM CONTROLLED AREA) AND NODE #3 REPRESENTS CONTROLLED SITE DRAINAGE AREA
 - NODE #4 REPRESENTS UNCONTROLLED DRAINAGE AREA
 - NODE #101 REPRESENTS PRE-DEVELOPMENT DATA.

No.	REVISION	DATE	BY
3	REVISIONS AS PER CITY'S REVIEW COMMENTS OF JANUARY 24, 2025	02/12/25	TLM
2	ISSUED FOR PERMIT	01/17/25	TLM
1	ISSUED FOR SITE PLAN APPLICATION - 2ND SUBMISSION	11/05/24	TLM



DESIGN	T.L.M.
CHECKED	T.L.M.
DRAWN BY	P.M.
CHECKED	T.L.M.
APPROVED	T.L.M.

PROJECT
**917 MERIVALE ROAD
LOT 1
REGISTERED PLAN 268160
CITY OF OTTAWA**

DRAWING TITLE
STORM DRAINAGE AREA PLAN

**T.L. MAK ENGINEERING CONSULTANTS LTD.
CONSULTING ENGINEERS**

PROJECT No. 823-102 DATE JULY 2024 DRAWING No. D-1