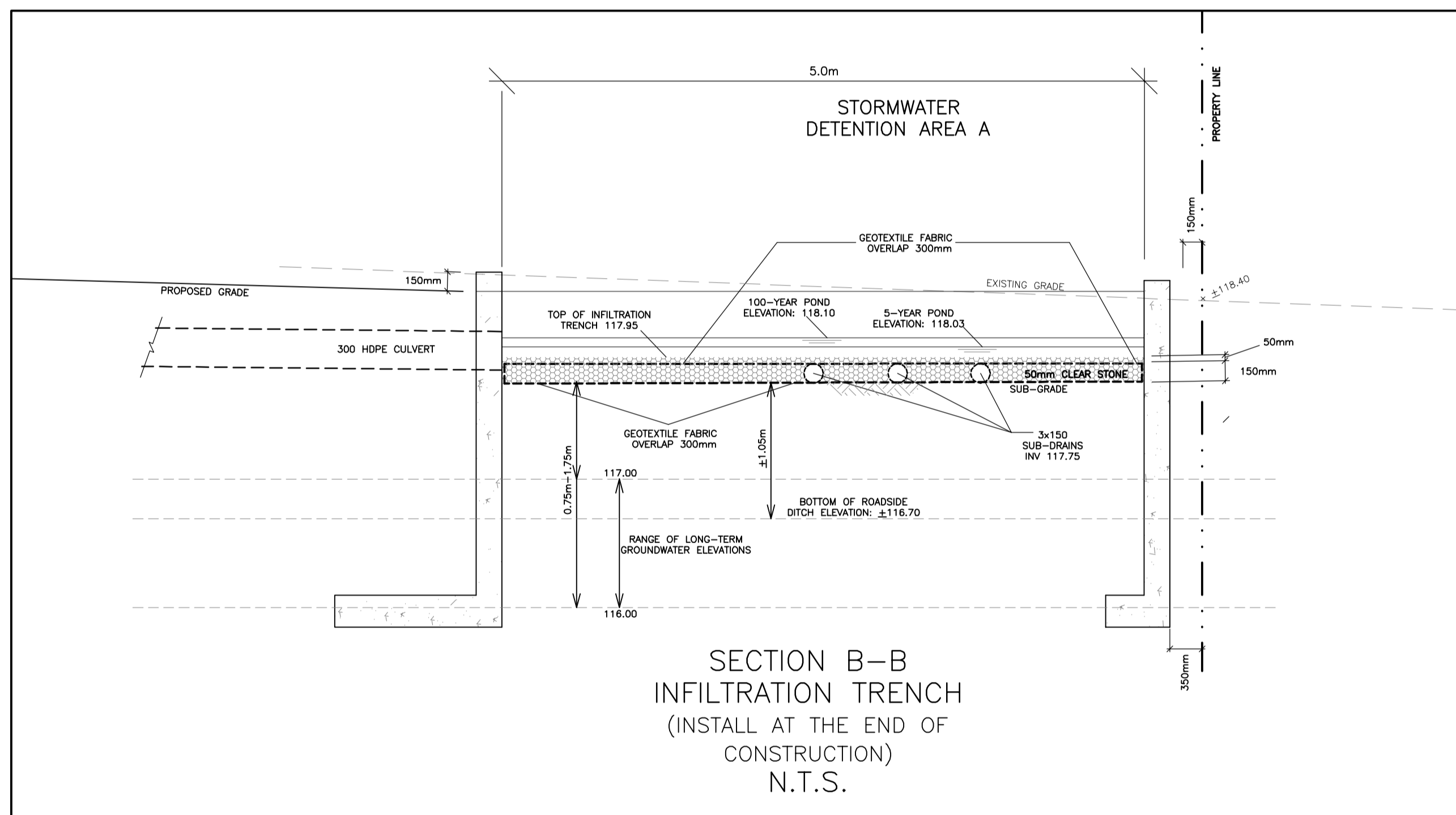


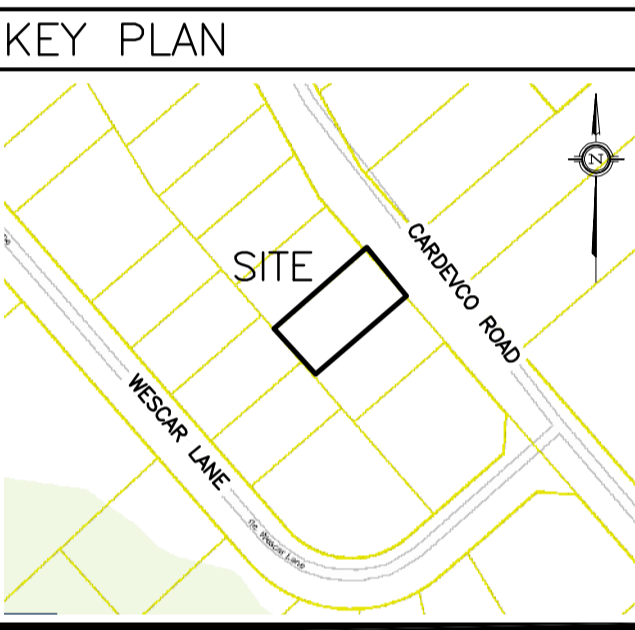
LEGEND

- FFL FINISHED FLOOR ELEVATION
- TOF TOP OF FOUNDATION
- USF UNDERSIDE OF FOOTING
- PROPERTY LINE
- CB CATCH-BASIN
- MH STORM MANHOLE
- ST STORM SEWER
- INV INVERT OF PIPE
- +99.99 EXISTING GRADE ELEVATION
- +99.99 PROPOSED GRADE ELEVATION
- 2% EXISTING SLOPE OF GRADE
- 2% PROPOSED SLOPE OF GRADE
- EMERGENCY OVERLAND FLOW
- T.O.S. TOP OF SLOPE
- B.O.S. BOTTOM OF SLOPE
- CENTERLINE OF SWALE
- SILT FENCE BARRIER
- ROOF DRAIN
- LIGHT-DUTY PAVEMENT
- HEAVY-DUTY PAVEMENT
- LANDSCAPE

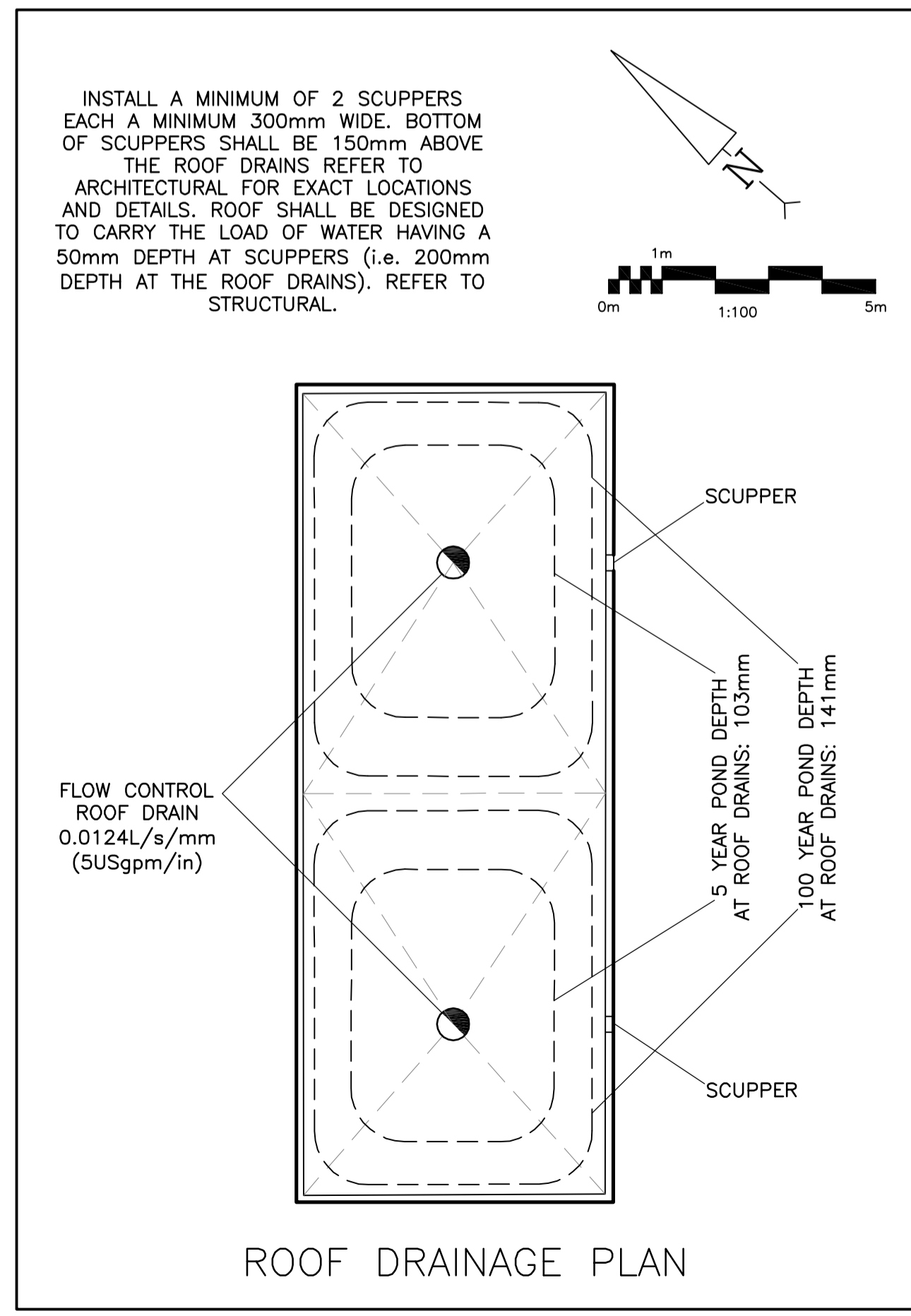
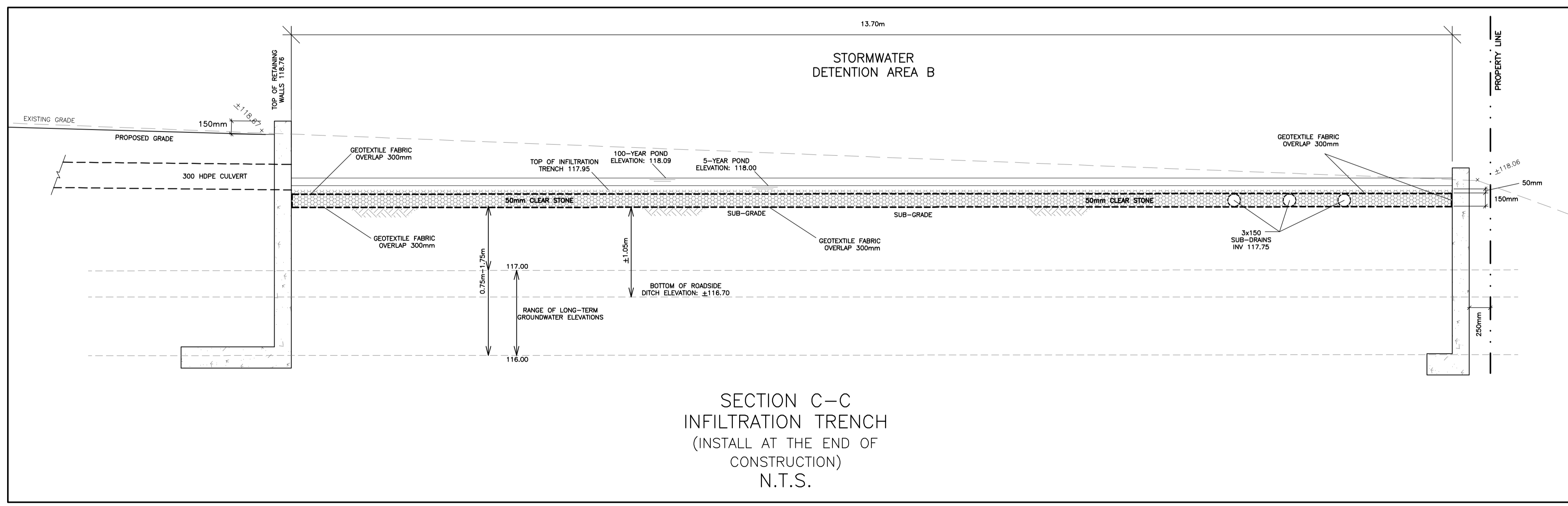


CATCH-BASIN & MANHOLE SCHEDULE

REF	TOP	SIZE	TYPE	INVERT AT INLET	INVERT AT OUTLET	NOTES
STORM SEWER						
CB-1	117.95	600mm x 600mm	PRECAST CONCRETE CATCH-BASIN	-	117.22	TO OPSD 705.010 & CITY OF OTTAWA STANDARDS - FRAME & COVER TO CITY OF OTTAWA DRAWING No. S19
MH-2	118.02	1500mm	PRECAST CONCRETE MANHOLE	117.20(SW)	117.20 (6x150 SUB-DRAINS)	TO OPSD 701.010 & CITY OF OTTAWA STANDARDS - FRAME & COVER TO CITY OF OTTAWA DRAWING No. S25 & S24.1 OR OPSD 401.010
MH-3 (OGS)	118.65	CDS PMSU2015-4	PRECAST CONCRETE MANHOLE (OIL GRIT SEPARATOR)	117.90(SE)	117.90(NE)	TO OPSD 701.010 & CITY OF OTTAWA STANDARDS EXCEPT WITH A DEEP SUMP AS REQUIRED BY CDS



No.	DATE	REVISION
6	FEB 10-25	RE-ISSUED FOR APPROVAL
5	OCT 11-24	RE-ISSUED FOR APPROVAL
4	JUN 9-23	RE-ISSUED FOR APPROVAL
3	NOV 24-22	ISSUED FOR APPROVAL
2	NOV 15-22	ISSUED FOR COORDINATION
1	SEP 12-22	PRELIMINARY



D. B. GRAY ENGINEERING INC.
 Stormwater Management - Grading & Drainage - Storm & Sanitary Sewers - Watertanks
 700 Long Point Circle 613-425-8044
 Ottawa, Ontario d.gray@dbgrayengineering.ca

Project
PROPOSED ADDITION
135 CARDEVCO ROAD
 OTTAWA, ONTARIO

Drawing Title
DETAILS

Engineer's Seal

 NOT VALID UNLESS SIGNED & DATED

Drawn D.B.G.
 H. Scale 1:100
 V. Scale
 Date SEP 12-22
 Job No. 21081

Drawing No.
C-3
 of 4