

Copyright Reserved
The Contractor shall verify and be responsible for all dimensions. DO NOT scale the drawings - any errors or omissions shall be reported to Stantec without delay.
The Copyright in all designs and drawings are the property of Stantec. Reproduction or use for any purpose other than that authorized by Stantec is forbidden.

Legend

- PROPOSED WATERMAIN
- PROPOSED VALVE AND VALVE BOX
- PROPOSED VALVE CHAMBER
- PROPOSED W3 CHAMBER
- PROPOSED REDUCER
- PROPOSED FIRE HYDRANT
- PROPOSED SANITARY SEWER
- PROPOSED STORM SEWER
- PROPOSED CATCHMAIN MANHOLE
- PROPOSED CATCHMAIN
- EXISTING WATERMAIN
- EXISTING VALVE AND VALVE BOX
- EXISTING VALVE CHAMBER
- EXISTING REDUCER
- EXISTING FIRE HYDRANT
- EXISTING CHAMBER
- EXISTING STORM SEWER
- EXISTING CATCHMAIN MANHOLE
- EXISTING CATCHMAIN
- PROPOSED DEPRESSURE CURB LOCATIONS
- PROPOSED BARRIER CURB
- THERMAL INSULATION ON STORM SEWER WHERE COVER IS LESS THAN 2.0m AND ON SANITARY SEWER WHERE COVER IS LESS THAN 0.6m PER 0.5m
- WATER METER
- REMOVE WATER METER
- ROAD CUT RESTORATION AREA PER CITY STD. 10.

Notes

200mmØ WATERMAIN TABLE

STATION	FINISHED GRADE	TOP W/M	ITEM
D+007.6	65.71	65.71	200mmØ TEE CONNECTION TO EX. 300mmØ C1
D+007.6	65.74	65.74	W3 WATER CHAMBER
D+010.9	65.81	65.81	200mmØ x 200mmØ TEE
D+019	65.13	65.13	TOP OF WATERMAIN
D+040	65.23	65.83	TOP OF WATERMAIN
D+050	65.04	65.64	TOP OF WATERMAIN
D+060	65.73	65.33	TOP OF WATERMAIN
D+083.8	67.69	65.29	150mmØ FREE HYDRANT LEAD
D+094.5	67.79	65.39	45° VERTICAL BEND
D+095.5	67.79	66.30	45° VERTICAL BEND
D+097.5	67.80	66.30	45° VERTICAL BEND
D+099	67.81	66.30	45° VERTICAL BEND
D+0100	67.83	66.40	45° VERTICAL BEND
D+0103.8	67.86	65.40	45° HORIZONTAL BEND
D+0128.4	67.79	65.39	45° HORIZONTAL BEND
D+0130.7	67.77	65.30	45° HORIZONTAL BEND
D+0141	67.73	65.35	45° HORIZONTAL BEND
D+0145.2	67.66	65.40	45° HORIZONTAL BEND
D+150.2	68.18	65.76	200mmØ CAP AND TREST BLOCK

SEWER AND WATERMAIN CROSSING TABLE

CROSSING	STM INV	STM DEB	SAN INV	SAN DEB	WTR TOP	WTR BTM
1	64.57(64.46)	65.32(65.43)	63.75(63.82)	64.01(64.14)	63.83	65.53
2	64.58(64.47)	65.32(65.43)	63.84	64.09	63.86	65.54
3	64.73(64.61)	65.56(65.67)	64.19	64.44	64.37	66.17

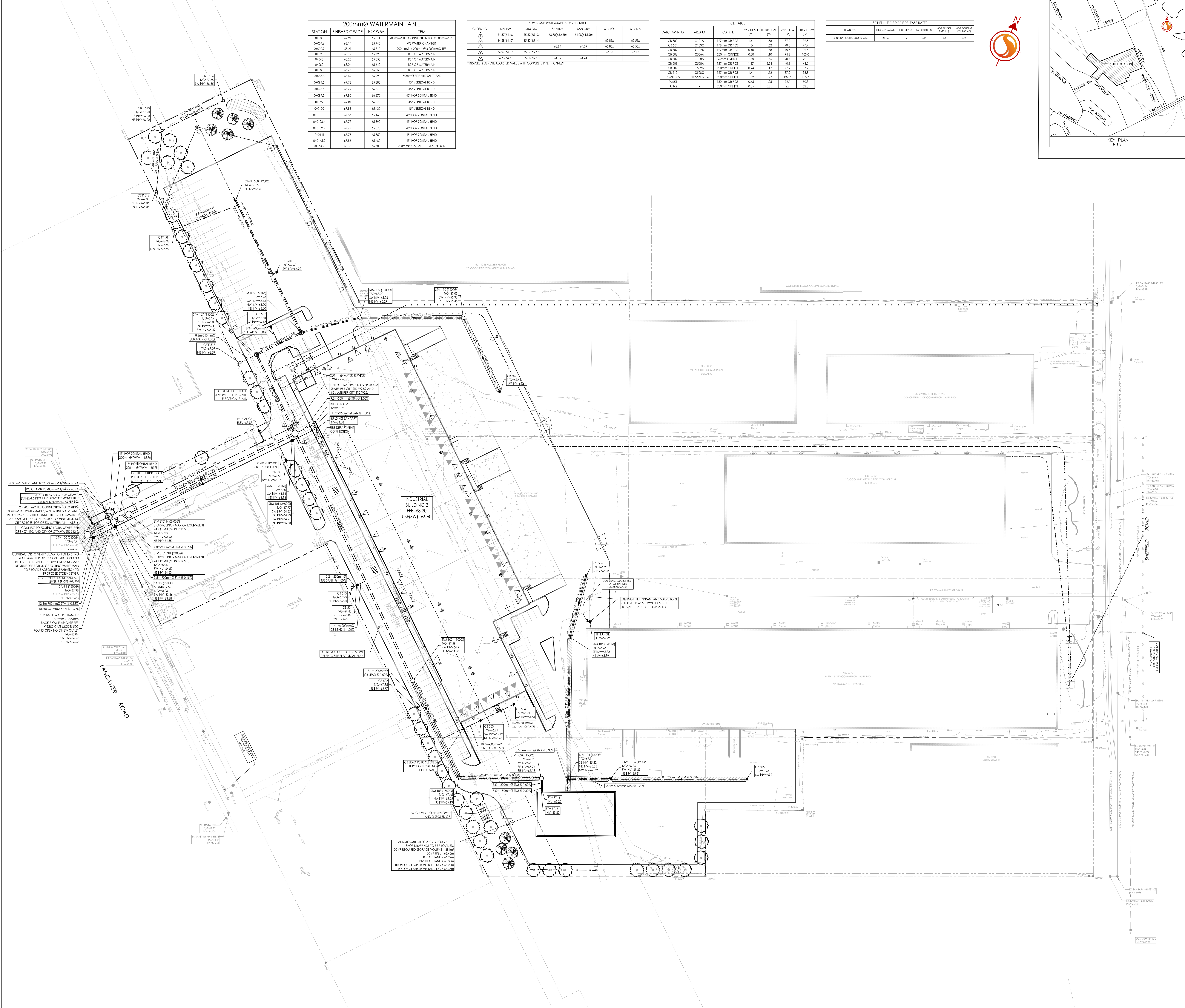
BRACKETS DENOTE ADJUSTED VALUE WITH CONCRETE PIPE THICKNESS

ICD TABLE

CATCHMAIN ID	AREA ID	ICD TYPE	2/8 HEAD (m)	10/6 HEAD (m)	2/8 FLOW (L/s)	10/6 FLOW (L/s)
C8 502	C101A	127mm ORFCE	1.41	1.38	37.2	39.5
C8 501	C102C	178mm ORFCE	1.34	1.42	76.5	77.9
C8 502	C103B	127mm ORFCE	0.40	1.38	18.7	39.5
C8 508	C104A	203mm ORFCE	0.80	1.30	14.2	100.0
C8 507	C105A	93mm ORFCE	1.38	1.35	20.7	22.0
C8 508	C106A	127mm ORFCE	1.67	2.38	40.8	40.0
C8 509	C107A	203mm ORFCE	0.94	1.17	77.5	87.7
C8 510	C108C	127mm ORFCE	1.41	1.32	37.2	38.8
C8W 105	C109C/105A	228mm ORFCE	1.30	1.37	134.1	133.7
TANK1	-	150mm ORFCE	0.63	1.25	36.1	50.3
TANK2	-	200mm ORFCE	0.85	0.65	2.9	42.8

SCHEDULE OF ROOF RELEASE RATES

CHIMNEY	MINIMUM AREA (m²)	# OF CHIMN	SEWER HEAD	WTR RELEASE RATE (L/s)	10/6 FLOW (L/s)	10/6 FLOW (L/s)
2x3m CONCRETE BLOCK BUILDING	300	1	0.15	30.4	30.4	30.4



Revision

Rev	Description	By	App'd	Date
1	ISSUED FOR 107 SPA SUBMISSION	M.S.	DT	25.01.21
2	SUBMITTED FOR REVIEW	M.S.	DT	24.06.21

Permit-Seal

Client/Project
RICHCRAFT

2760-2770 SHEFFIELD ROAD
NEW INDUSTRIAL BUILDING
OTTAWA, ONTARIO

Title
SITE SERVICING PLAN