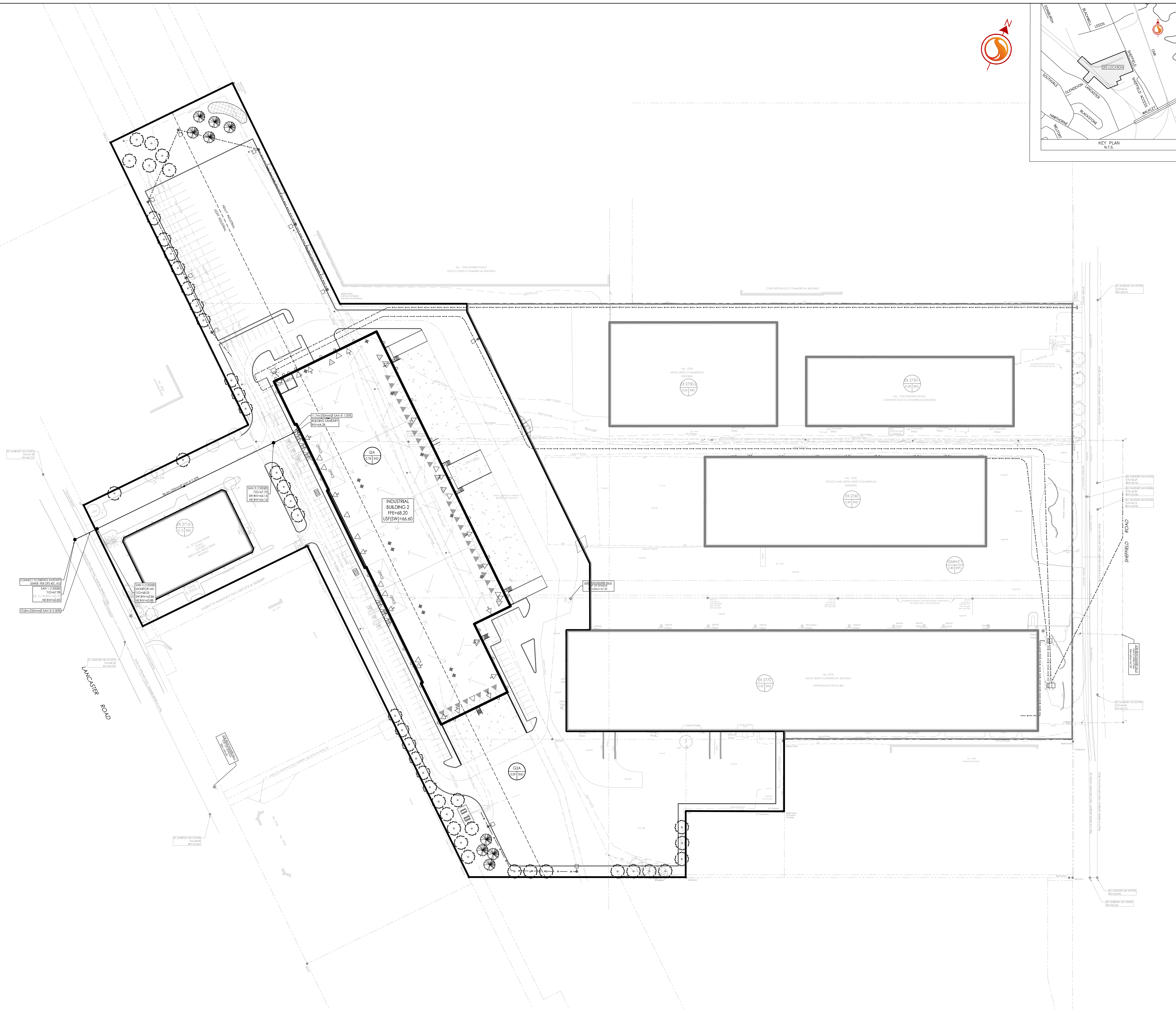
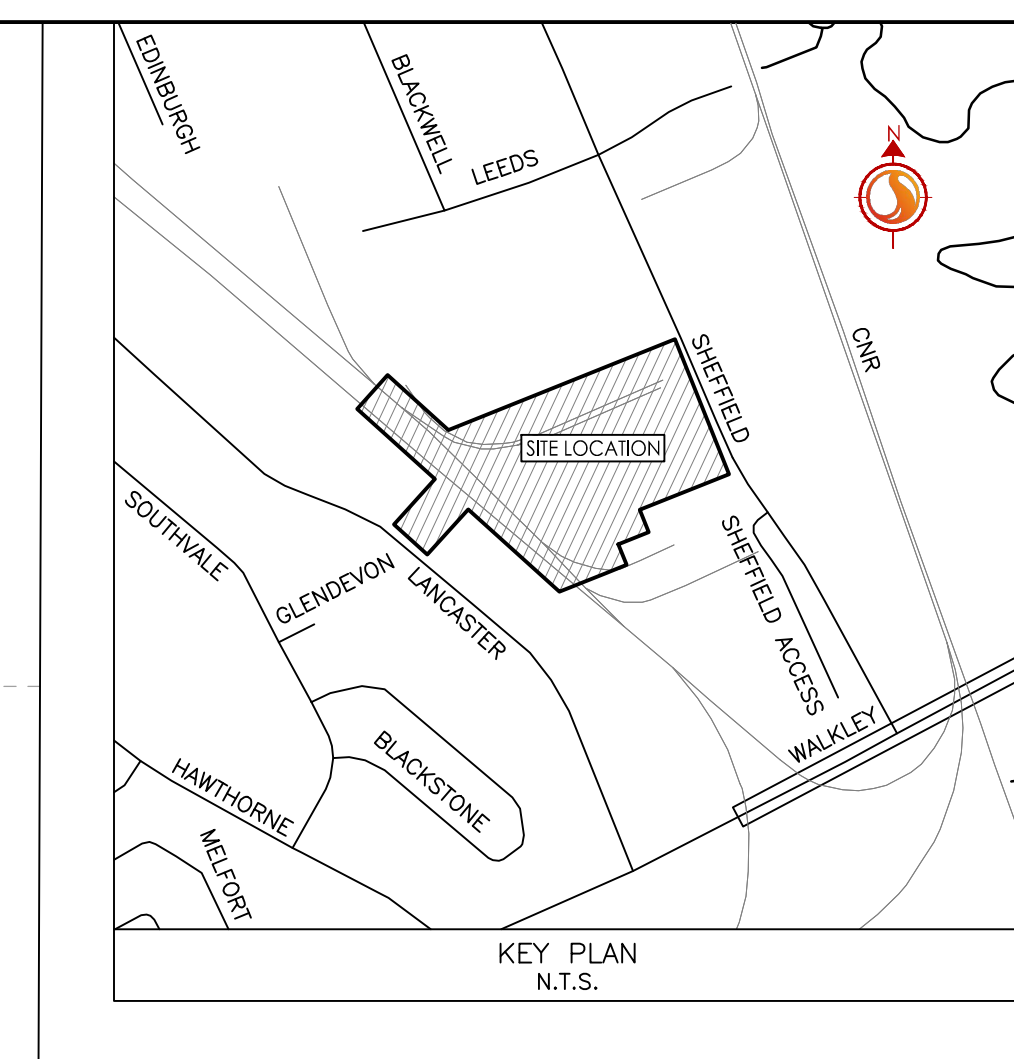


Legend

- I2A  
0.30 IND  
SANITARY DRAINAGE AREA ID#  
LIGHT INDUSTRIAL RATE OF 33000 L/HG APPLIED
- G100A  
0.10 INFL  
SANITARY DRAINAGE AREA ID#  
INFILTRATION RATE OF 0.33 L/HG APPLIED
- SANITARY DRAINAGE AREA No.
- SANITARY DRAINAGE AREA No.
- PROPOSED SANITARY MH AND SEWER
- EXISTING SANITARY MH AND SEWER
- THERMAL REGULATION ON SANITARY SEWER WHERE COVER IS LESS THAN 2.5m AS PER S35.

Notes



Revision	By	App'd	Date
1	M.S.	D.T.	25.01.21
2	M.S.	D.T.	24.06.21

Permit-Seal	Drawn	Checked	Design	Date
				24.05.21

Client/Project  
**RICHCRAFT**

2760-2770 SHEFFIELD ROAD  
NEW INDUSTRIAL BUILDING  
OTTAWA, ONTARIO

Title  
**SANITARY DRAINAGE PLAN**