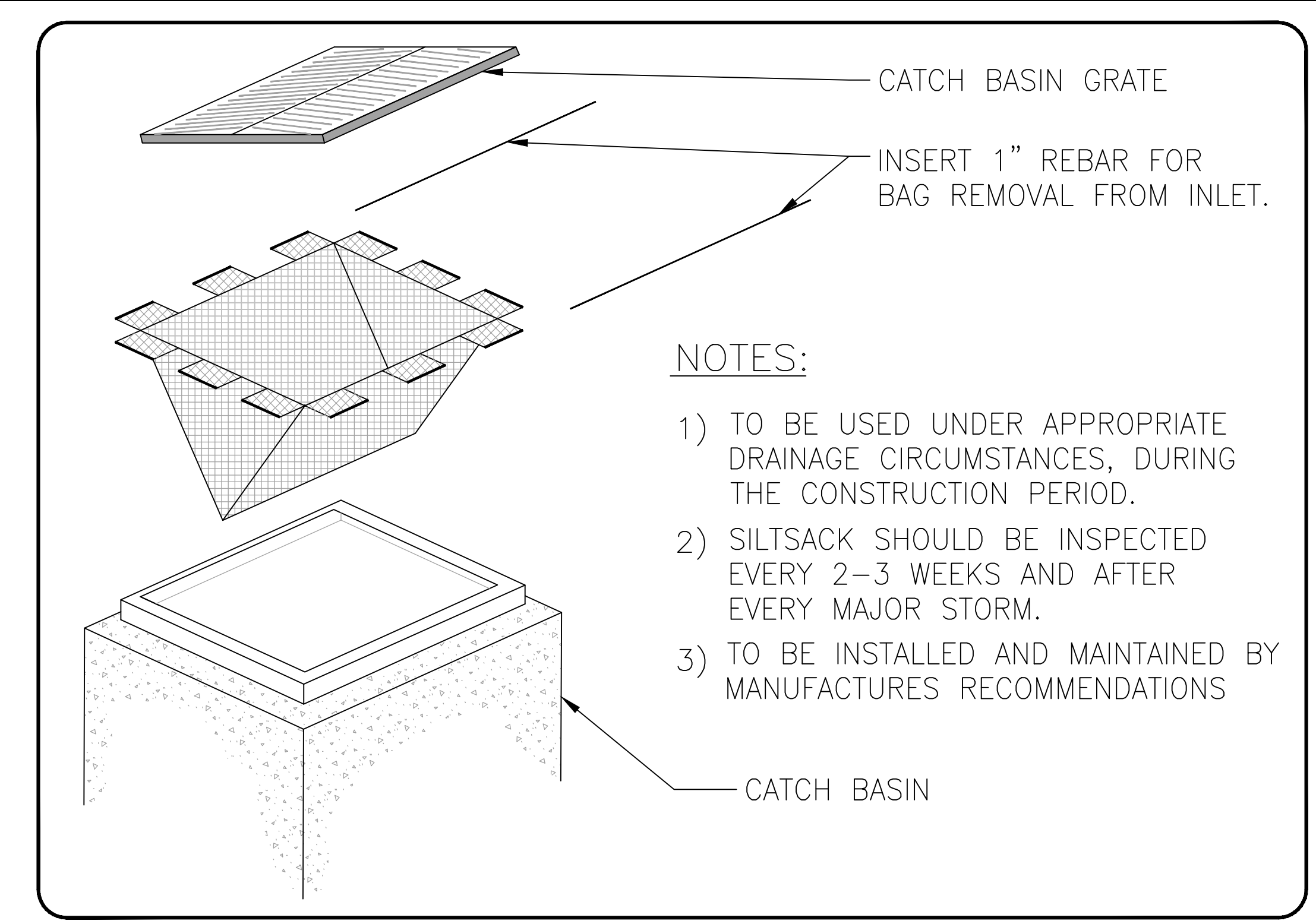


Legend

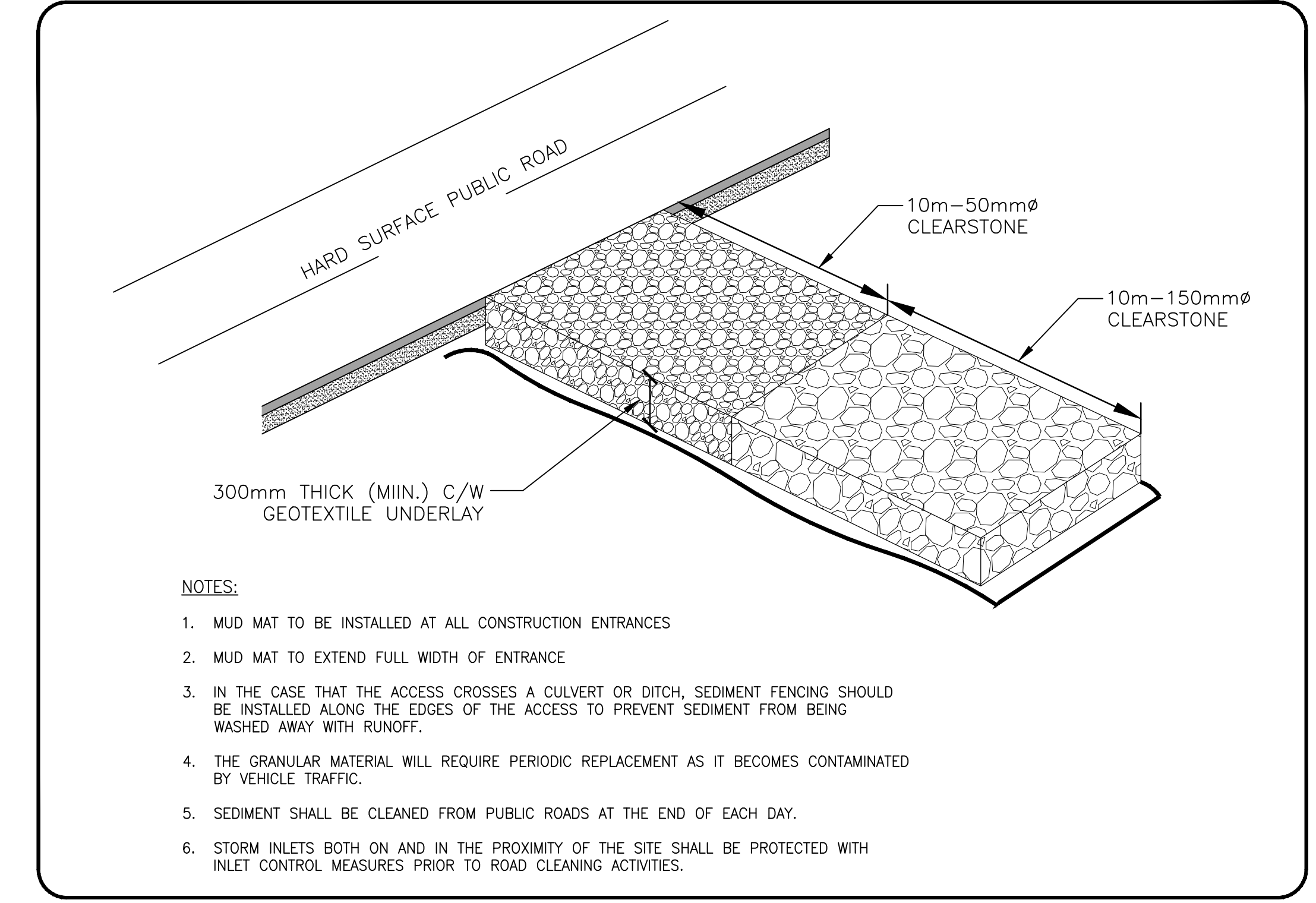
	PROPOSED SET FENCE BOUNDARY AS PER OPSD 219.110
	PROPOSED STRAW BALE BARRIER AS PER OPSD 219.100
	PROPOSED CATCH BASIN PROTECTION AS PER TERRAFIX SILTSACK DETAIL
	PROPOSED MUD MAT LOCATION
	PROPOSED VALVE BOX
	PROPOSED VALVE CHAMBER
	PROPOSED FIRE HYDRANT
	PROPOSED SANITARY SEWER MANHOLE
	PROPOSED STORM SEWER MANHOLE
	PROPOSED CATCH BASIN

- Notes**
- CONTRACTOR TO PROVIDE EROSION AND SEDIMENT CONTROL (BEST MANAGEMENT PRACTICES) DURING CONSTRUCTION OF THIS PROJECT.
- EROSION MUST BE MINIMIZED AND SEDIMENTS MUST BE REMOVED FROM CONSTRUCTION SITE REGULARLY TO PROTECT DOWNSTREAM AREAS. DURING ALL CONSTRUCTION, EROSION AND SEDIMENTATION SHOULD BE CONTROLLED BY THE FOLLOWING TECHNIQUES:
- LIMIT THE EXTENT OF EXPOSED SOILS AT ANY GIVEN TIME.
 - REVEGETATE EXPOSED AREAS AND SLOPES AS SOON AS POSSIBLE.
 - MINIMIZE AREA TO BE CLEARED AND GRUBBED.
 - PROTECT EXPOSED SLOPES WITH PLASTIC OR SYNTHETIC MULCHES.
 - INSTALL CATCH BASIN INSERTS OR EQUIVALENT IN ALL PROPOSED CATCH BASINS AND CATCH BASIN MANHOLES AND ALL EXISTING CATCH BASINS THAT WILL RECEIVE RUN-OFF FROM THE SITE.
 - A SET FENCE SHALL BE INSTALLED AROUND THE PERIMETER OF ALL AND ANY STOCKPILES OR MATERIAL TO BE USED OR REMOVED FROM SITE. LOCATION TO BE DETERMINED.
 - A VISUAL INSPECTION SHALL BE DONE DAILY ON SEDIMENT CONTROL MEASURES AND CLEANED OF ANY ACCUMULATED SILT AS REQUIRED. THE REPORTS WILL BE DISPOSED OFF SITE AS PER THE REQUIREMENTS OF THE CONTRACT.
 - SEDIMENT CONTROL BARRIERS MAY ONLY BE REMOVED TEMPORARILY WITH APPROVAL OF CONTRACT ADMINISTRATOR TO ACCOMMODATE CONSTRUCTION OPERATIONS. ALL AFFECTED BARRIERS MUST BE REINSTATED AT NIGHT WHEN CONSTRUCTION IS COMPLETED. NO REMOVAL WILL OCCUR IF THERE IS A SIGNIFICANT RAINFALL EVENT ANTICIPATED (>10mm) UNLESS A NEW DEVICE HAS BEEN INSTALLED TO PROTECT EXISTING STORM AND SANITARY SEWER SYSTEMS, OR DOWNSTREAM WATERCOURSES.
 - NO REFUELING OR CLEANING OF EQUIPMENT IS PERMITTED NEAR ANY EXISTING WATERWAY.
 - CONTRACTOR SHALL REMOVE SEDIMENT CONTROL MEASURES WHEN IN THE OPINION OF THE CONTRACT ADMINISTRATOR THE MEASURES ARE NO LONGER REQUIRED. NO CONTROL MEASURES SHALL BE PERMANENTLY REMOVED WITHOUT PROPER WRITTEN AUTHORIZATION FROM THE CONTRACT ADMINISTRATOR.
 - THE CONTRACTOR SHALL PERIODICALLY OR WHEN REQUESTED BY THE CONTRACT ADMINISTRATOR, CLEAN OUT ACCUMULATED SEDIMENTS AS REQUIRED.
 - THE CONTRACTOR SHALL IMMEDIATELY REPORT TO THE ENGINEER ANY ACCIDENTAL DISCHARGES OF SEDIMENT MATERIAL INTO THE WATERCOURSE. APPROPRIATE RESPONSE MEASURES, INCLUDING ANY REPAIRS TO EXISTING CONTROL MEASURES OR THE IMPLEMENTATION OF ADDITIONAL CONTROL MEASURES, SHALL BE CARRIED OUT BY THE CONTRACTOR WITHOUT DELAY.
 - CONTRACTOR SHALL INSTALL MUD MATS AT BOTH ENTRANCES TO THE SITE.
 - STORMWATER SWALES TO BE COVERED WITH HYDRO-SEED AND MULCH.



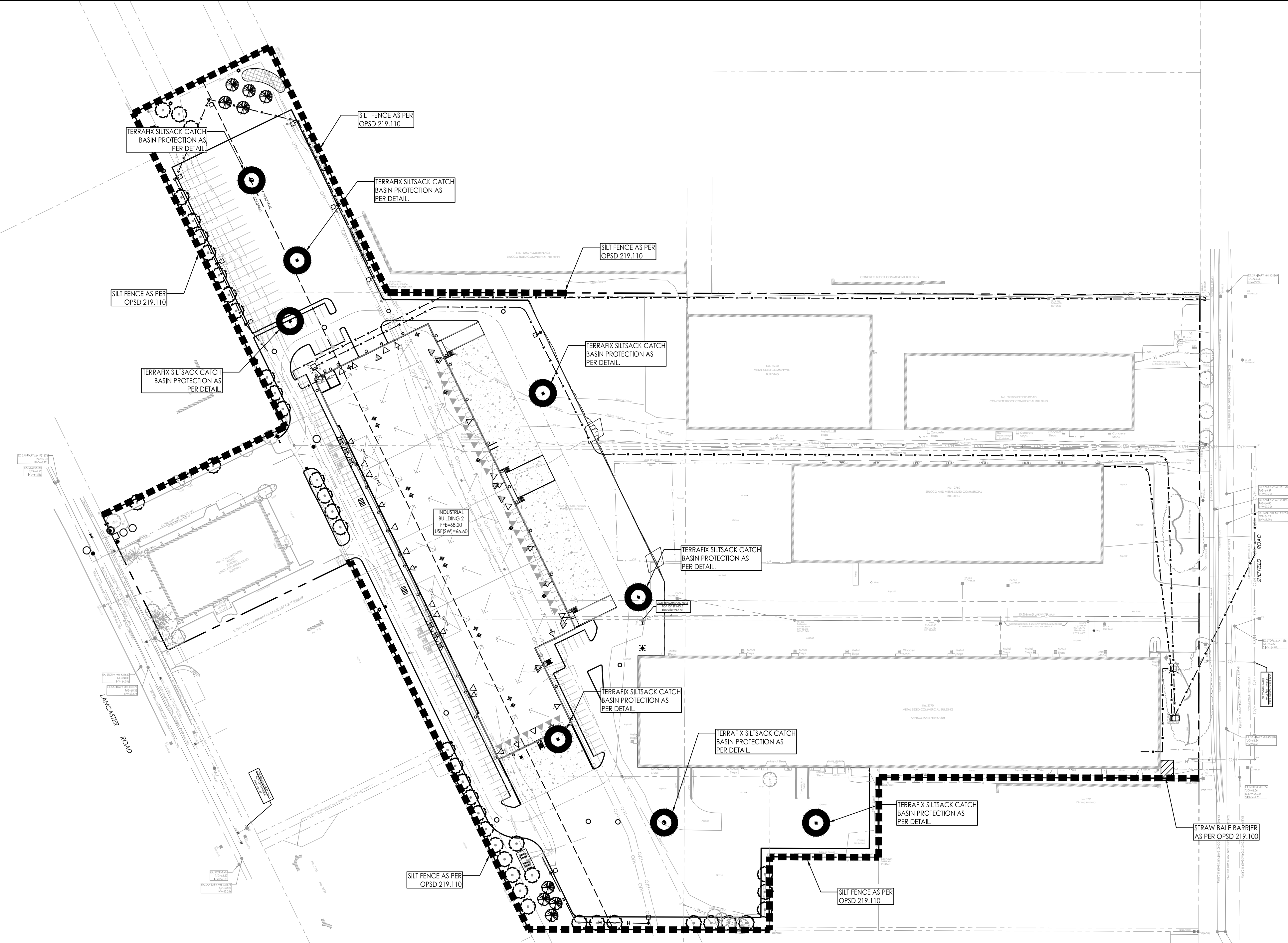
- NOTES:**
- TO BE USED UNDER APPROPRIATE DRAINAGE CIRCUMSTANCES, DURING THE CONSTRUCTION PERIOD.
 - SILTSACK SHOULD BE INSPECTED EVERY 2-3 WEEKS AND AFTER EVERY MAJOR STORM.
 - TO BE INSTALLED AND MAINTAINED BY MANUFACTURERS RECOMMENDATIONS

ROADSIDE CATCH BASIN PROTECTION DETAIL: TERRAFIX SILTSACK
SCALE: N.T.S.

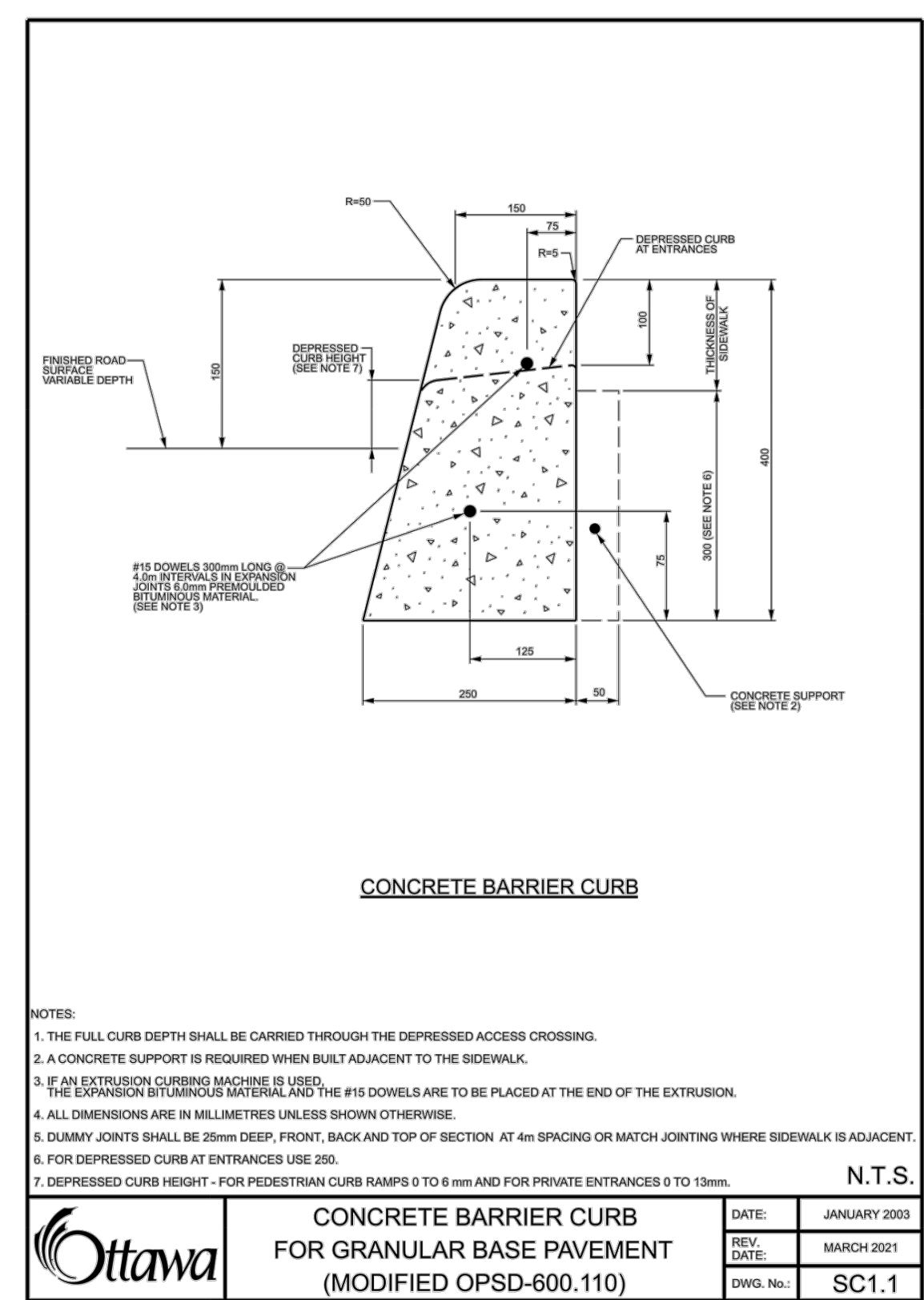


- NOTES:**
- MUD MAT TO BE INSTALLED AT ALL CONSTRUCTION ENTRANCES
 - MUD MAT TO EXTEND FULL WIDTH OF ENTRANCE
 - IN THE CASE THAT THE ACCESS CROSSES A CULVERT OR DITCH, SEDIMENT FENCING SHOULD BE INSTALLED ALONG THE EDGES OF THE ACCESS TO PREVENT SEDIMENT FROM BEING WASHED AWAY WITH RUNOFF.
 - THE GRANULAR MATERIAL WILL REQUIRE PERIODIC REPLACEMENT AS IT BECOMES CONTAMINATED BY VEHICLE TRAFFIC.
 - SEDIMENT SHALL BE CLEANED FROM PUBLIC ROADS AT THE END OF EACH DAY.
 - STORM INLETS BOTH ON AND IN THE PROXIMITY OF THE SITE SHALL BE PROTECTED WITH INLET CONTROL MEASURES PRIOR TO ROAD CLEANING ACTIVITIES.

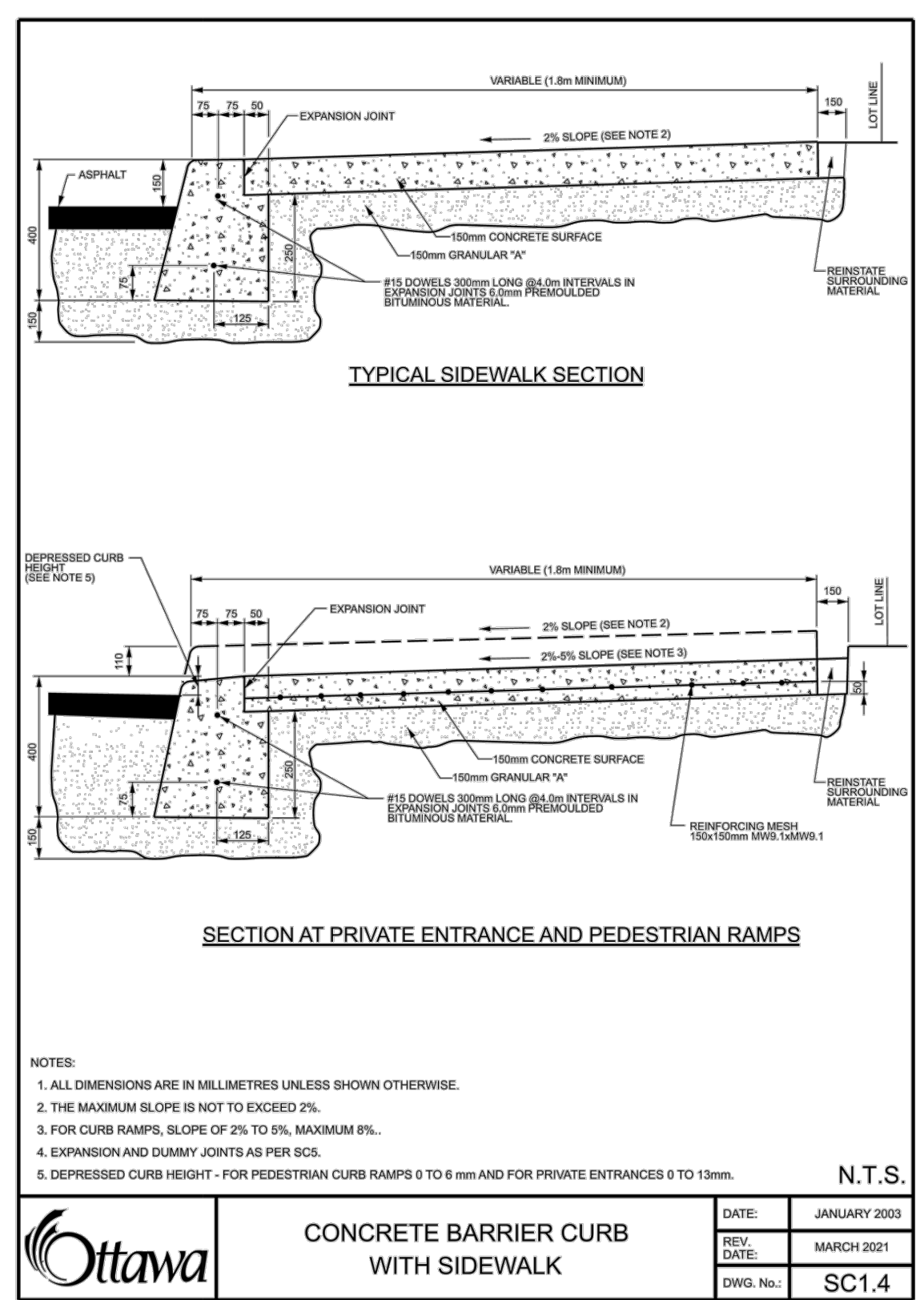
MUD MAT ENTRANCE DETAIL
SCALE: N.T.S.



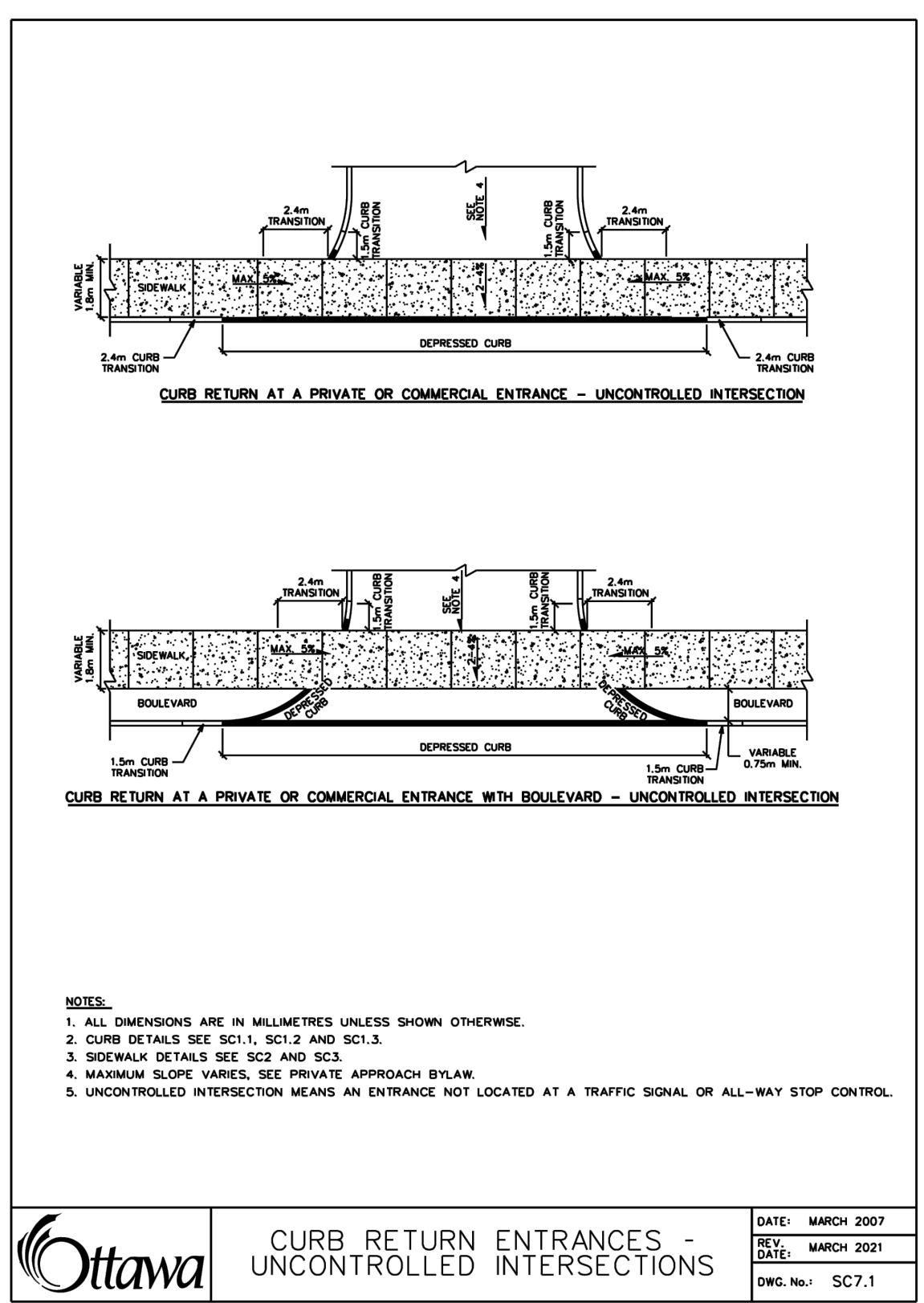
1:1000



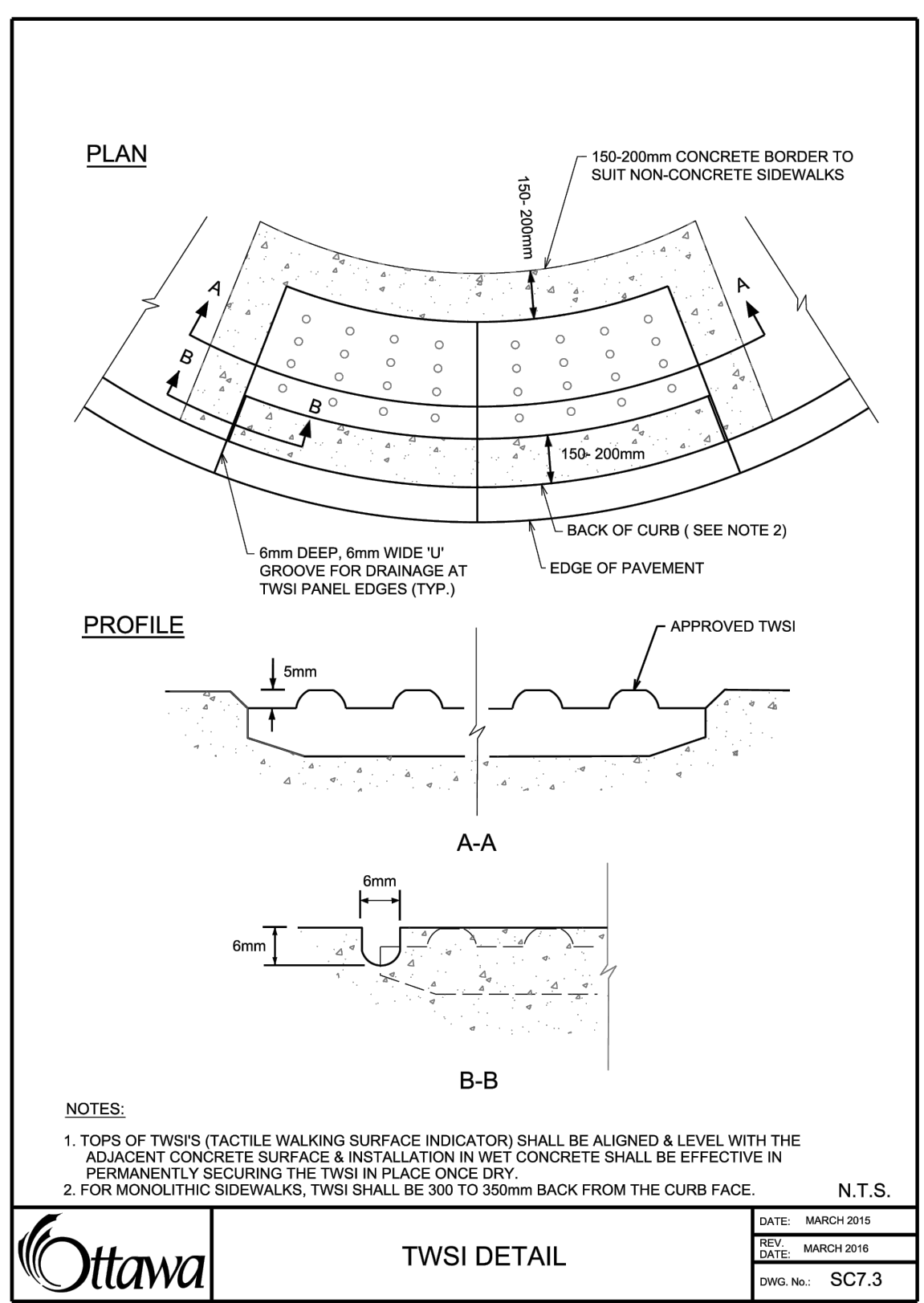
CONCRETE BARRIER CURB FOR GRANULAR BASE PAVEMENT (MODIFIED OPSD-600.110)
DATE: JANUARY 2007
SCALE: 1:10
SCT.1



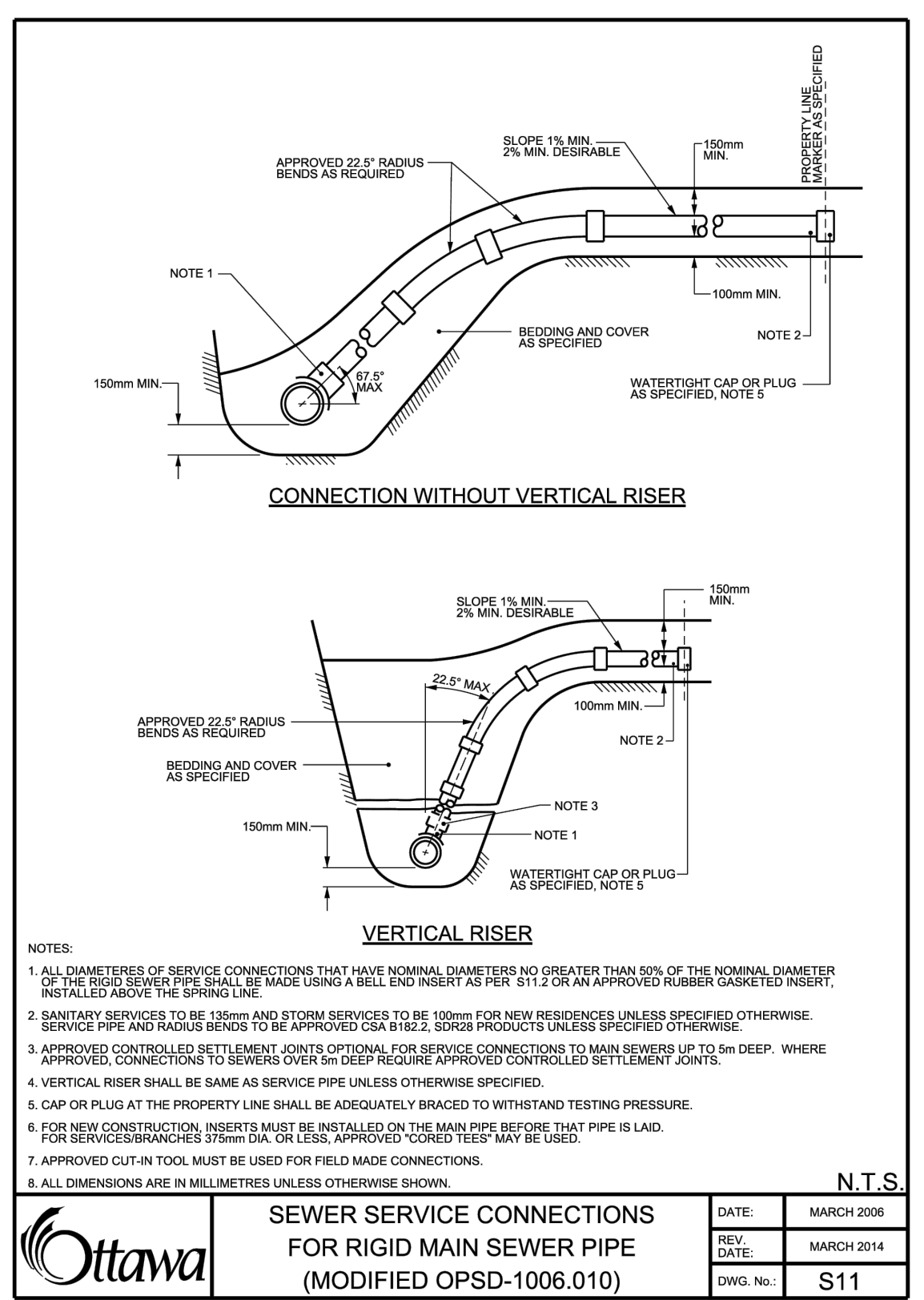
CONCRETE BARRIER CURB WITH SIDEWALK
DATE: JANUARY 2007
SCALE: 1:10
SCT.4



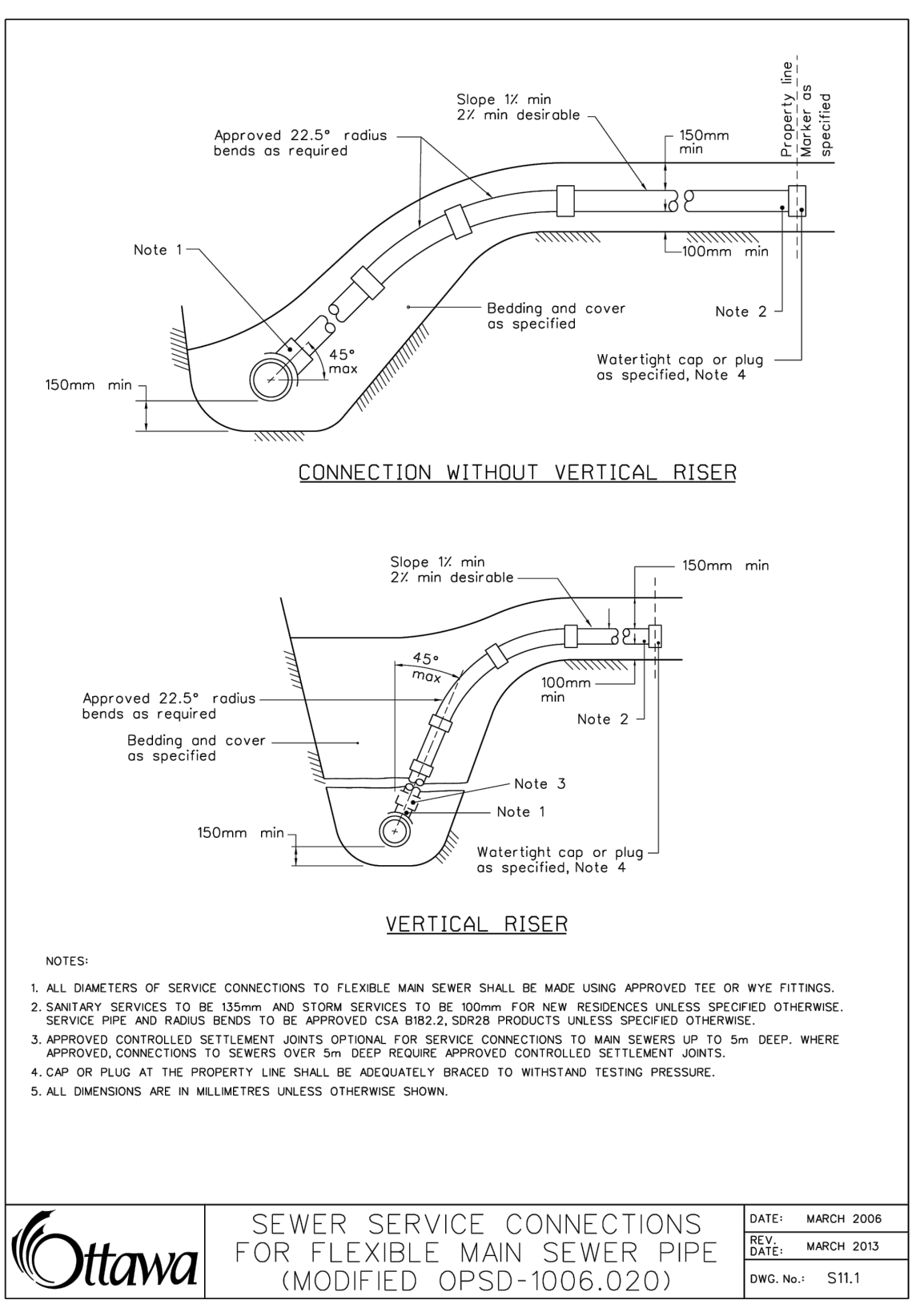
CURB RETURN ENTRANCES - UNCONTROLLED INTERSECTIONS
DATE: MARCH 2007
SCALE: 1:10
SCT.7



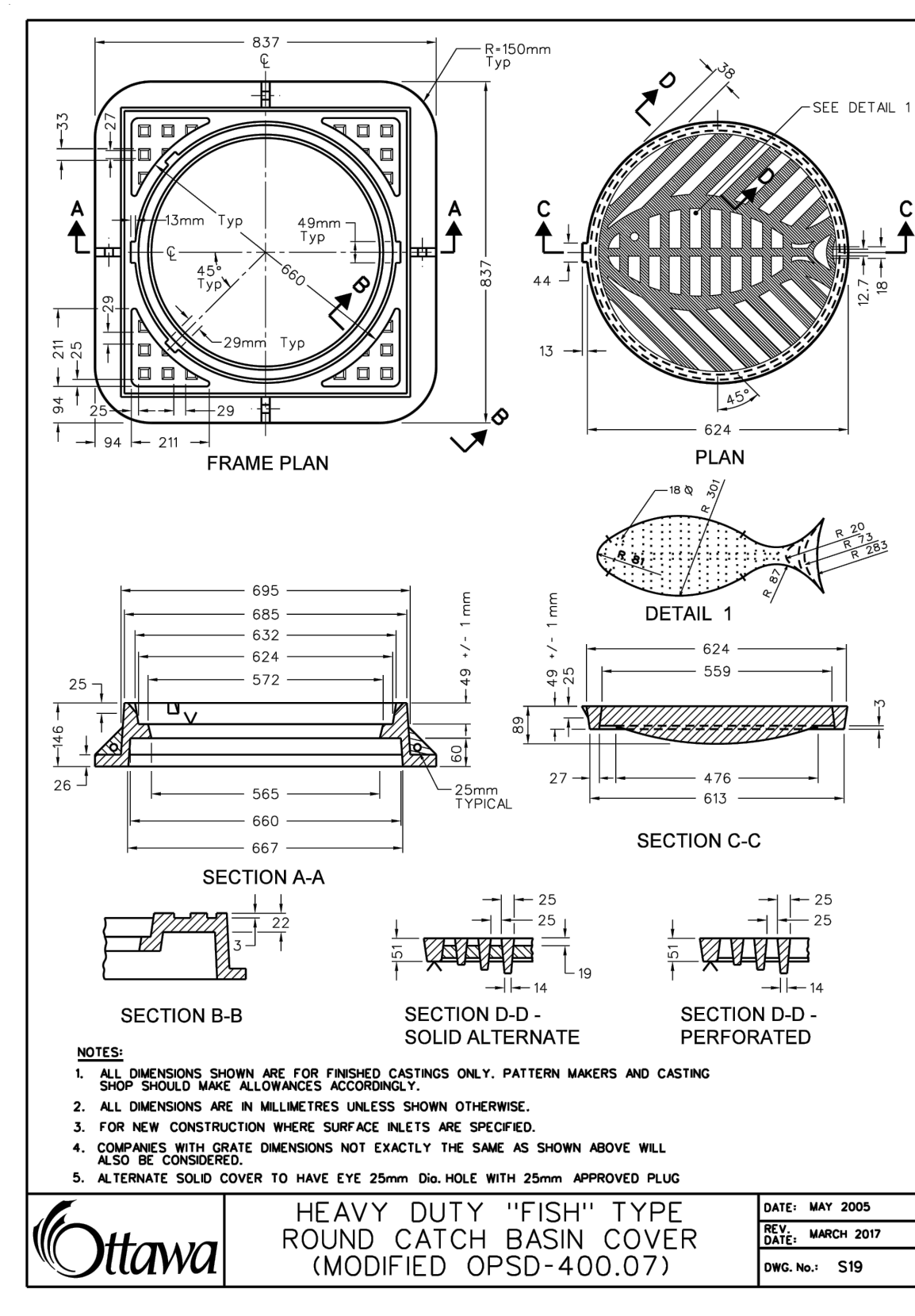
TWSI DETAIL
DATE: MARCH 2011
SCALE: 1:10
SCT.3



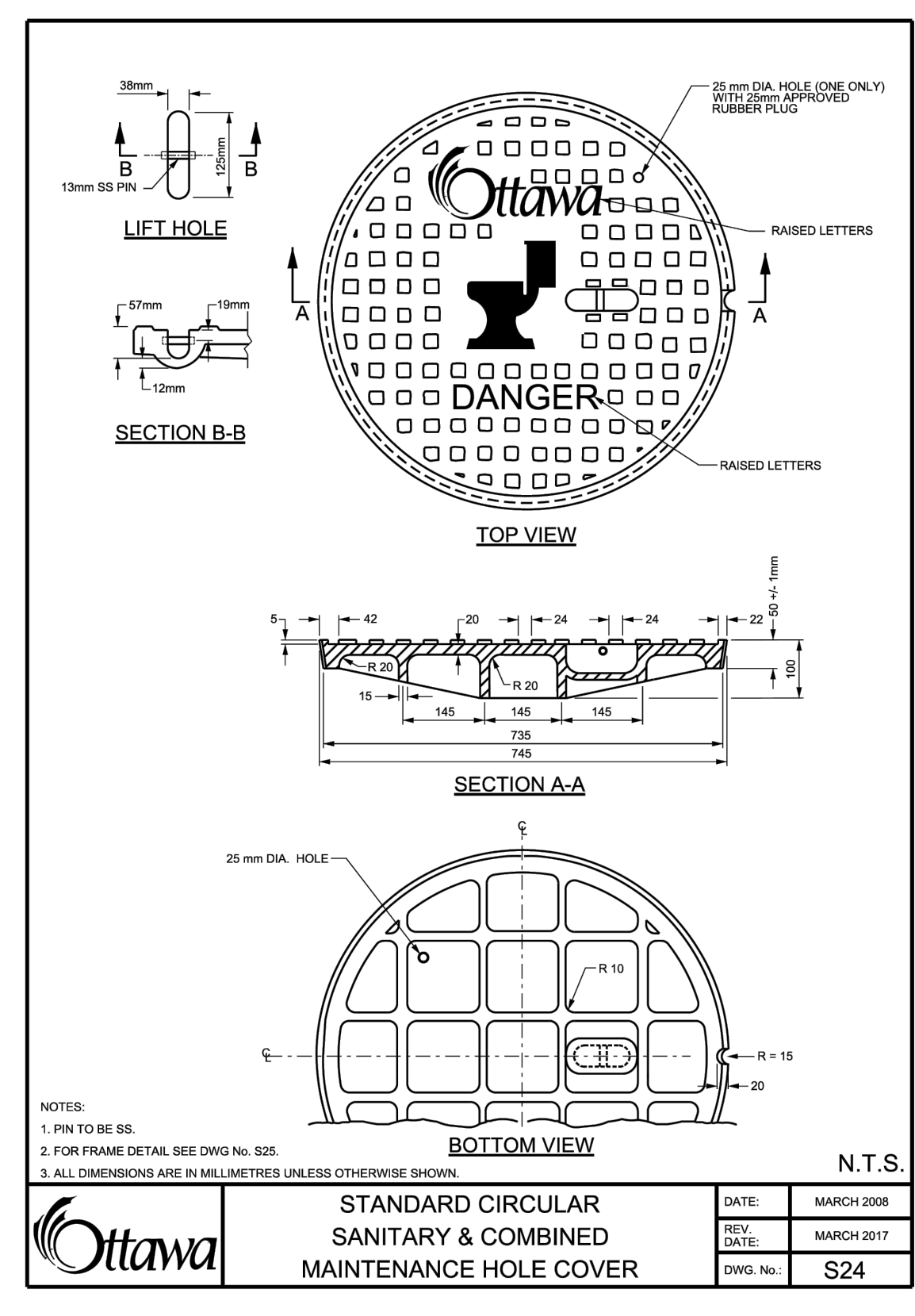
SEWER SERVICE CONNECTIONS FOR RIGID MAIN SEWER PIPE (MODIFIED OPSD-1006.010)
DATE: MARCH 2006
SCALE: 1:10
S11



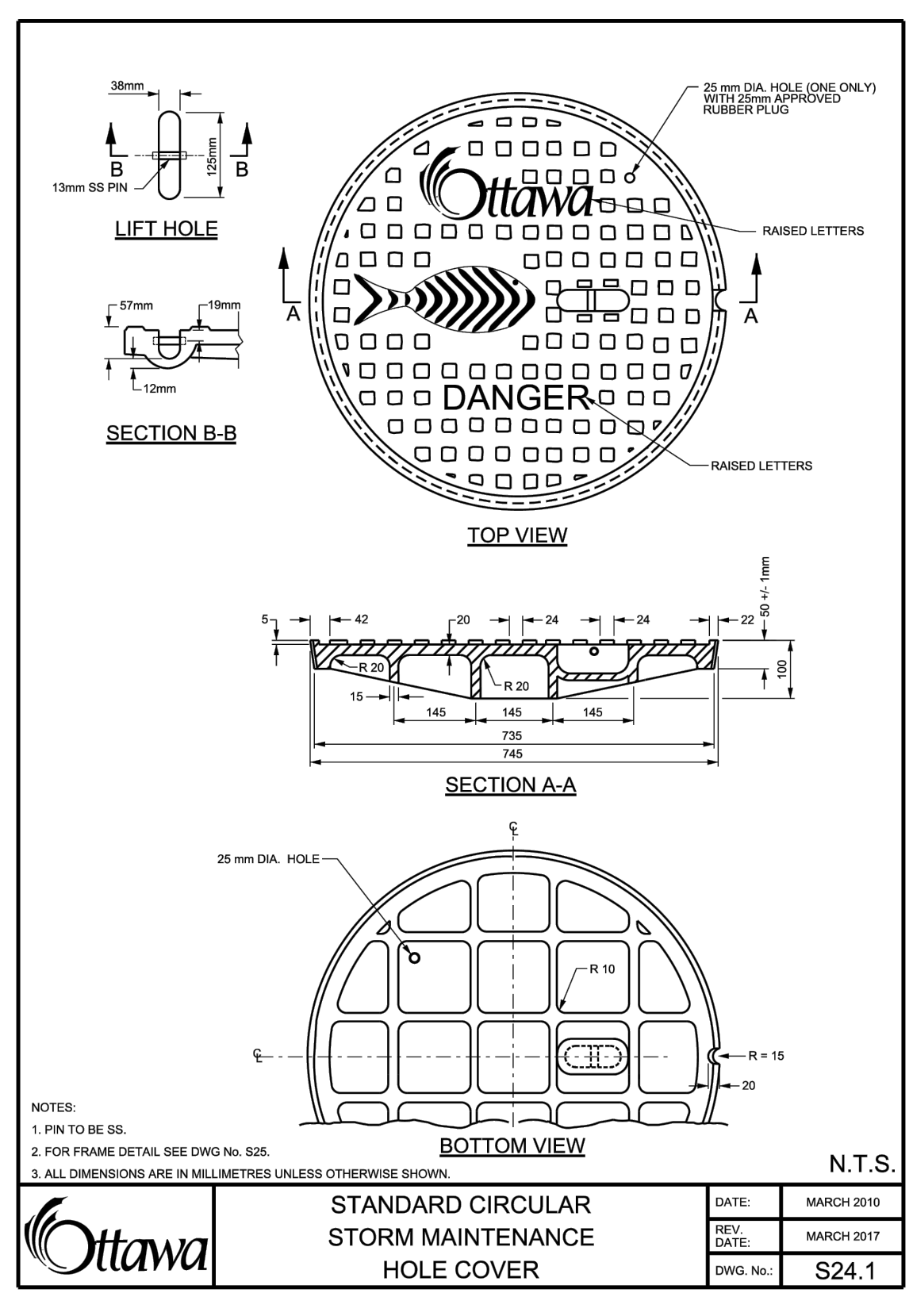
SEWER SERVICE CONNECTIONS FOR FLEXIBLE MAIN SEWER PIPE (MODIFIED OPSD-1006.020)
DATE: MARCH 2006
SCALE: 1:10
S11.1



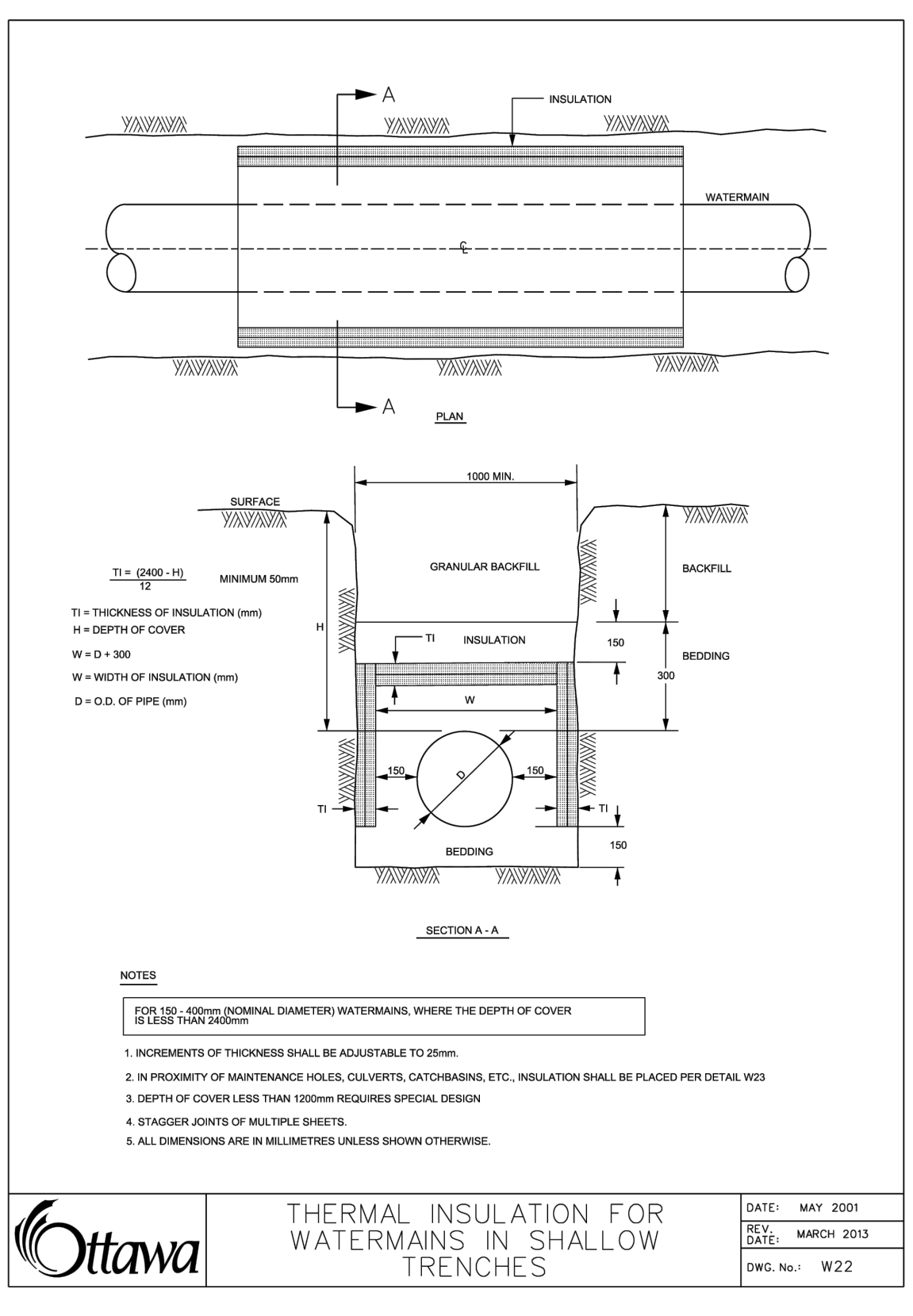
HEAVY DUTY "FISH" TYPE ROUND CATCH BASIN COVER (MODIFIED OPSD-400.07)
DATE: MAY 2008
SCALE: 1:10
S19



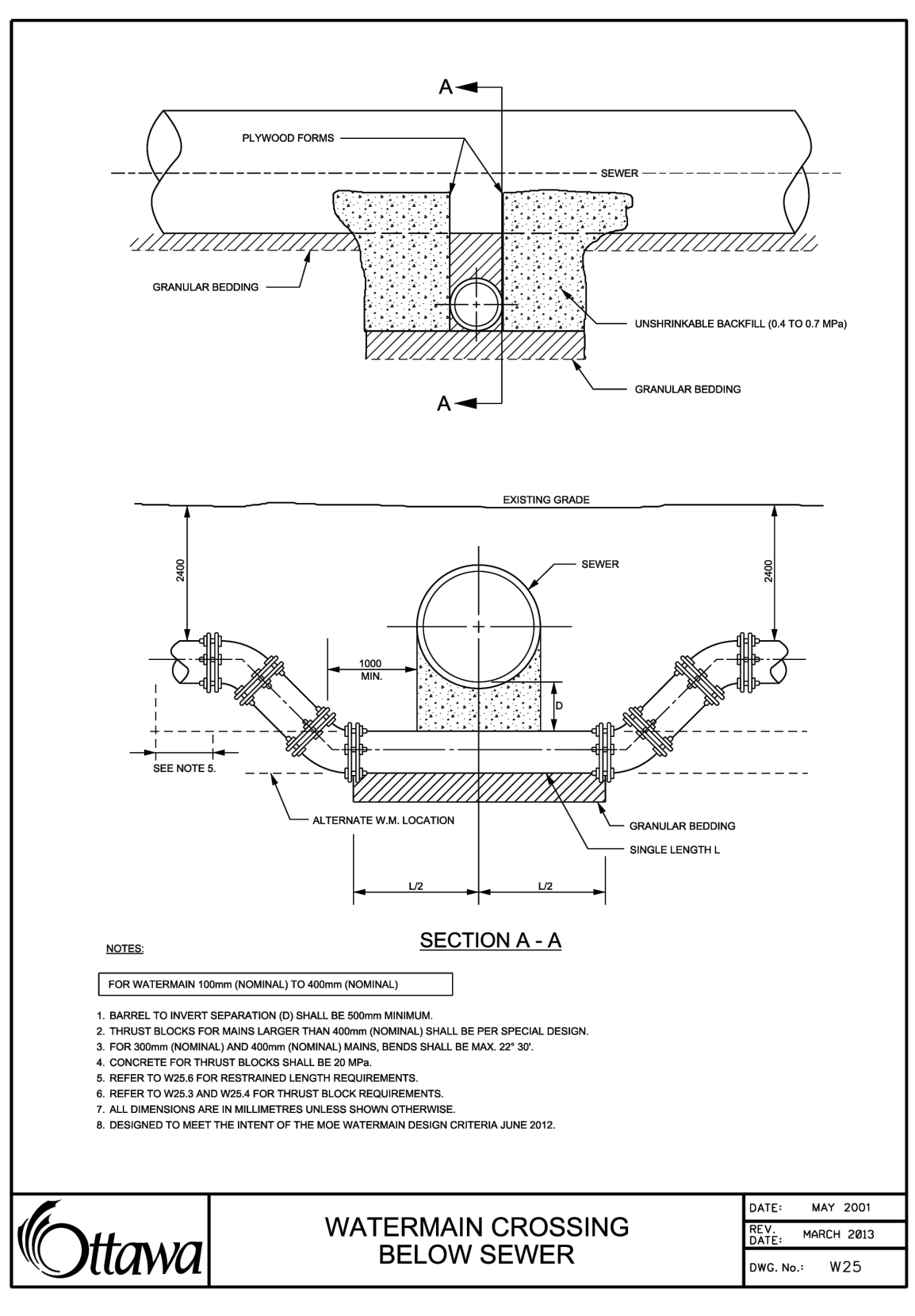
STANDARD CIRCULAR SANITARY & COMBINED MAINTENANCE HOLE COVER
DATE: MARCH 2008
SCALE: 1:10
S24



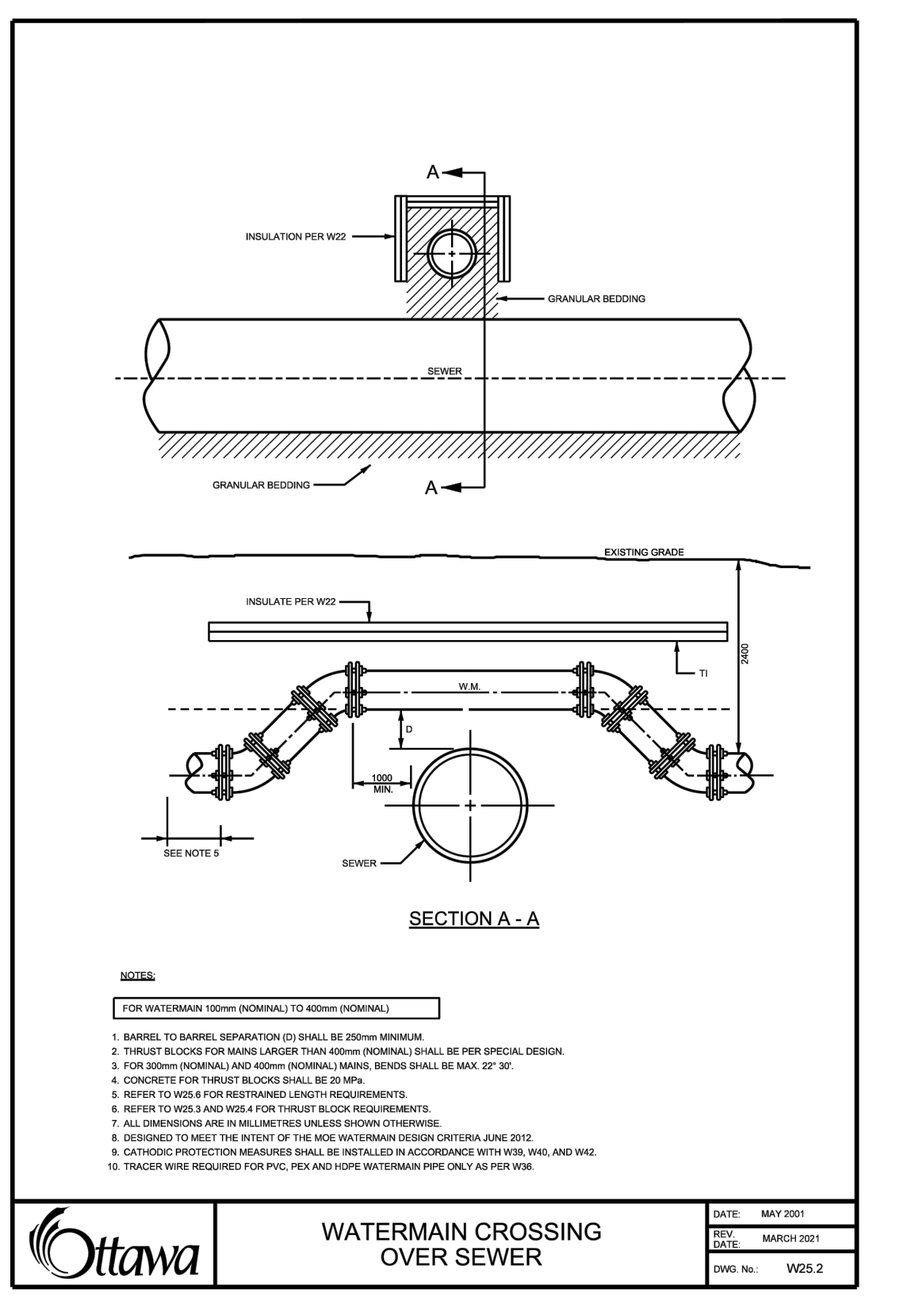
STANDARD CIRCULAR STORM MAINTENANCE HOLE COVER
DATE: MARCH 2008
SCALE: 1:10
S24.1



THERMAL INSULATION FOR WATERMAINS IN SHALLOW TRENCHES
DATE: MAY 2001
SCALE: 1:10
S22



WATERMAIN CROSSING BELOW SEWER
DATE: MAY 2001
SCALE: 1:10
S25



WATERMAIN CROSSING OVER SEWER
DATE: MAY 2001
SCALE: 1:10
S25.1

1. ISSUED FOR 107 SPA SUBMISSION	M.S.	DT	25.07.07
2. SUBMITTED FOR REVIEW	M.S.	DT	24.08.07
3. APPROVED FOR CONSTRUCTION	By	Appc.	YYMMDD
4. APPROVED FOR PERMITTING	M.S.	DT	24.05.08
5. APPROVED FOR CONSTRUCTION	Det.	Chck.	DT
6. APPROVED FOR CONSTRUCTION	Det.	Chck.	DT

Client/Project
RICHCRAFT

2760-2770 SHEFFIELD ROAD
NEW INDUSTRIAL BUILDING
OTTAWA, ONTARIO

Title
EROSION CONTROL PLAN AND DETAIL SHEET

Project No. 160401916
Scale
Drawing No. ECDS-1
Sheet
Revision
1