

APPROVED
By Kersten Nitsche at 1:18 pm, Feb 12, 2025

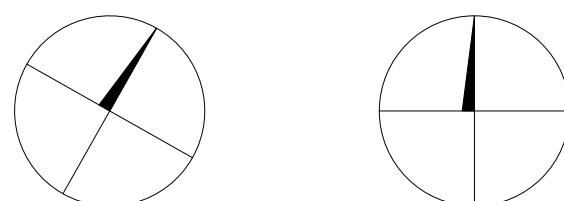
Kersten Nitsche
KERSTEN NITSCHKE, MCIP RPP
MANAGER (A), DEVELOPMENT REVIEW WEST
PLANNING, DEVELOPMENT AND BUILDING SERVICES
DEPARTMENT, CITY OF OTTAWA

EXTERIOR MATERIALS LEGEND

- AS-1 ACRYLIC STUCCO 1 - DARK GREY
- BR-1 BRICK MASONRY - BELDEN BRICK - BLACK DIAMOND VELOUR
- MC-1 METAL COPING - IDEAL ROOFING - BLACK #8262
- MP-1 METAL PANEL 1 - AL13 COMPOSITE ALUMINUM - MC308 METALLIC CHARCOAL
- MP-2 METAL PANEL 2 - AL13 COMPOSITE ALUMINUM - DARK GREY
- MP-3 METAL PANEL 2 - AGWAY 6-150 NF - 38mm STEEL CLADDING - DEEP GREY QC #28314
- MP-4 METAL PANEL 4 - WHITE COMPOSITE ALUMINUM PANEL
- VG-1 VISION GLASS 1 - SOLARBAN 60 CLEAR GLASS IN BLACK ANODIZED ALUMINUM FRAMES
- WP-1 WOOD PANEL 1 - FAST PLANK METAL SIDING - LIGHT CHERRY WOOD GRAIN

06 MATERIAL LEGEND
A201 SCALE: NTS

North



Revisions

No.	By	Description	Date
01	NH	ISSUED FOR SITE PLAN CONTROL	03 MAR 2023
02	NH	ISSUED FOR REVIEW	10 MAY 2023
03	NH	RE-ISSUED FOR SITE PLAN CONTROL	17 NOV 2023
04	NH	RE-ISSUED FOR SITE PLAN CONTROL	19 APR 2024
05	NH	ISSUED FOR REVIEW	06 MAY 2024
06	NH	RE-ISSUED FOR SITE PLAN CONTROL	12 JULY 2024
07	NH	RE-ISSUED FOR SITE PLAN CONTROL	10 JAN 2025



Project

LYNWOOD CENTRE REDEVELOPMENT

1826 ROBERTSON ROAD

Drawing
PROPOSED ELEVATIONS

Scale 1:100

Stamp

Drawn

NH

Checked

JS



Project No.

19-142

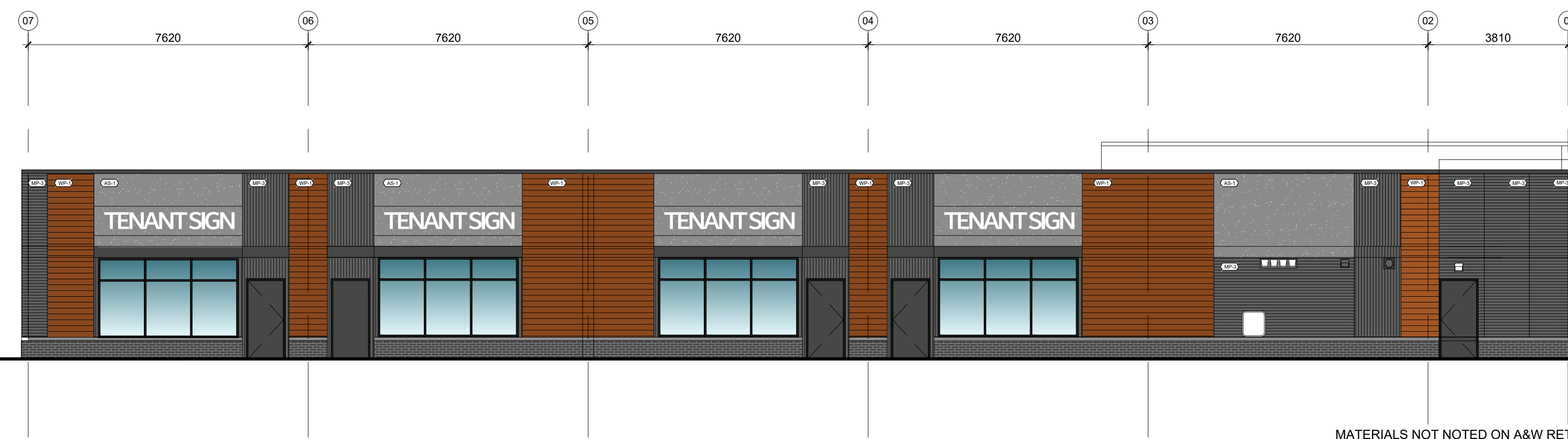
Drawing No.

A201

Date

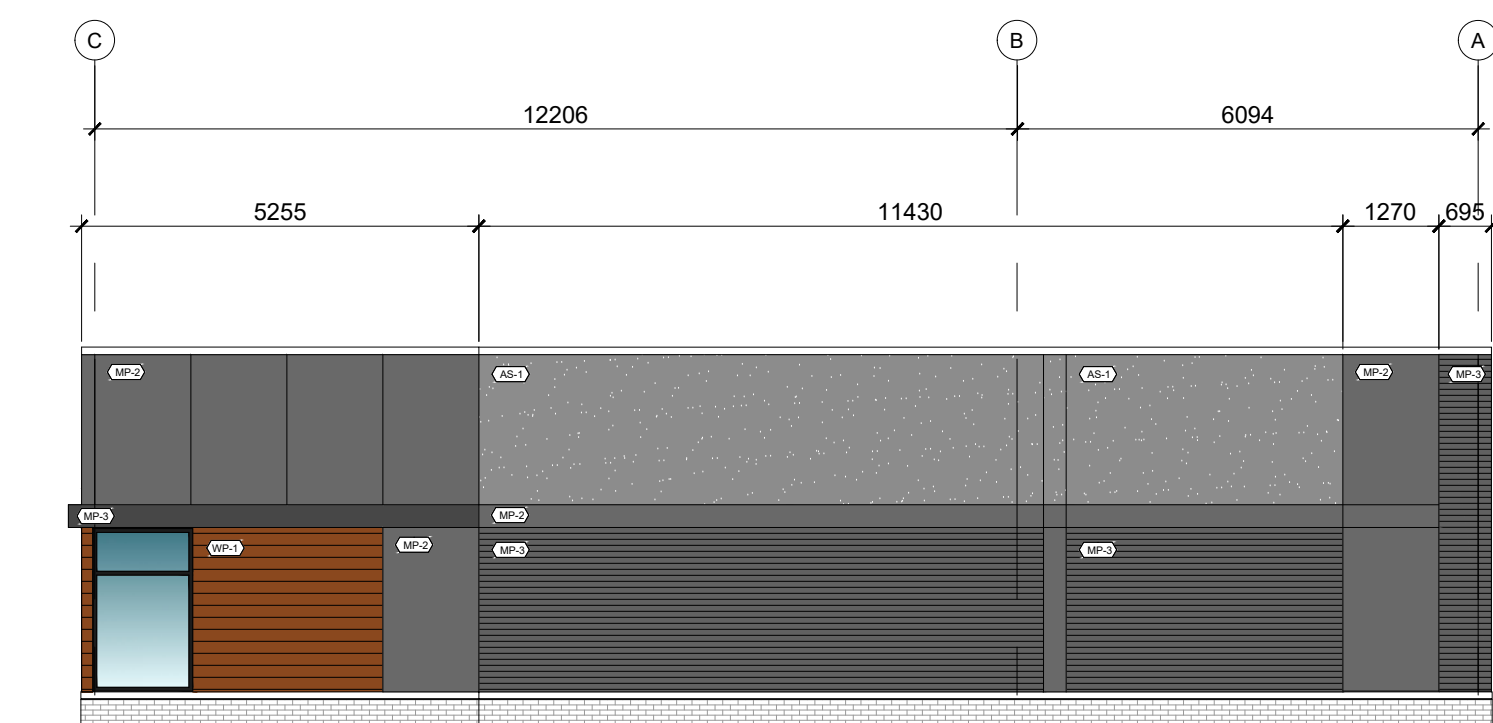
JAN 10, 2025

PLAN NUMBER: 19127

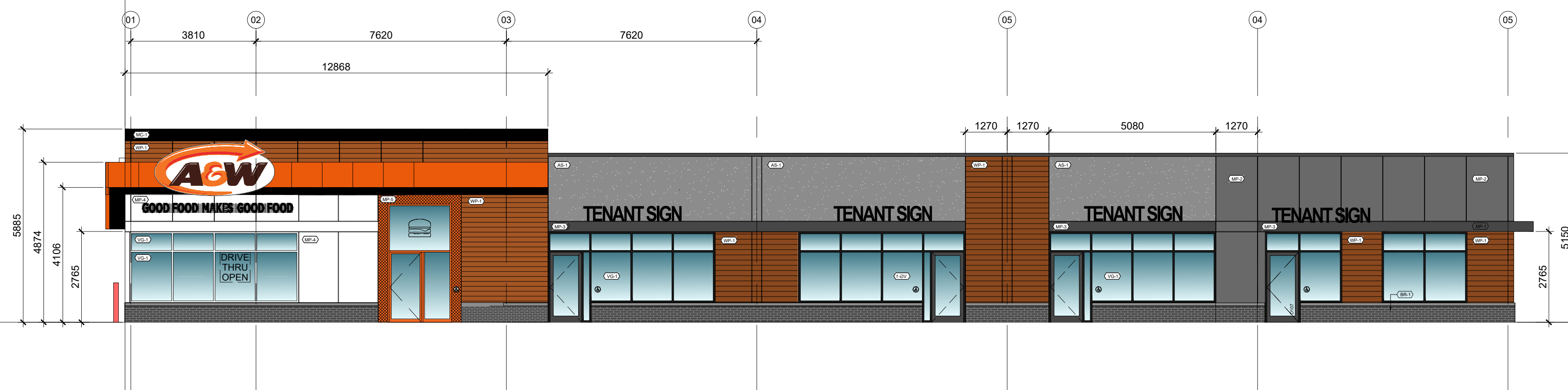


MATERIALS NOT NOTED ON A&W RETAIL UNIT TO MATCH A&W'S CORPORATE STANDARDS

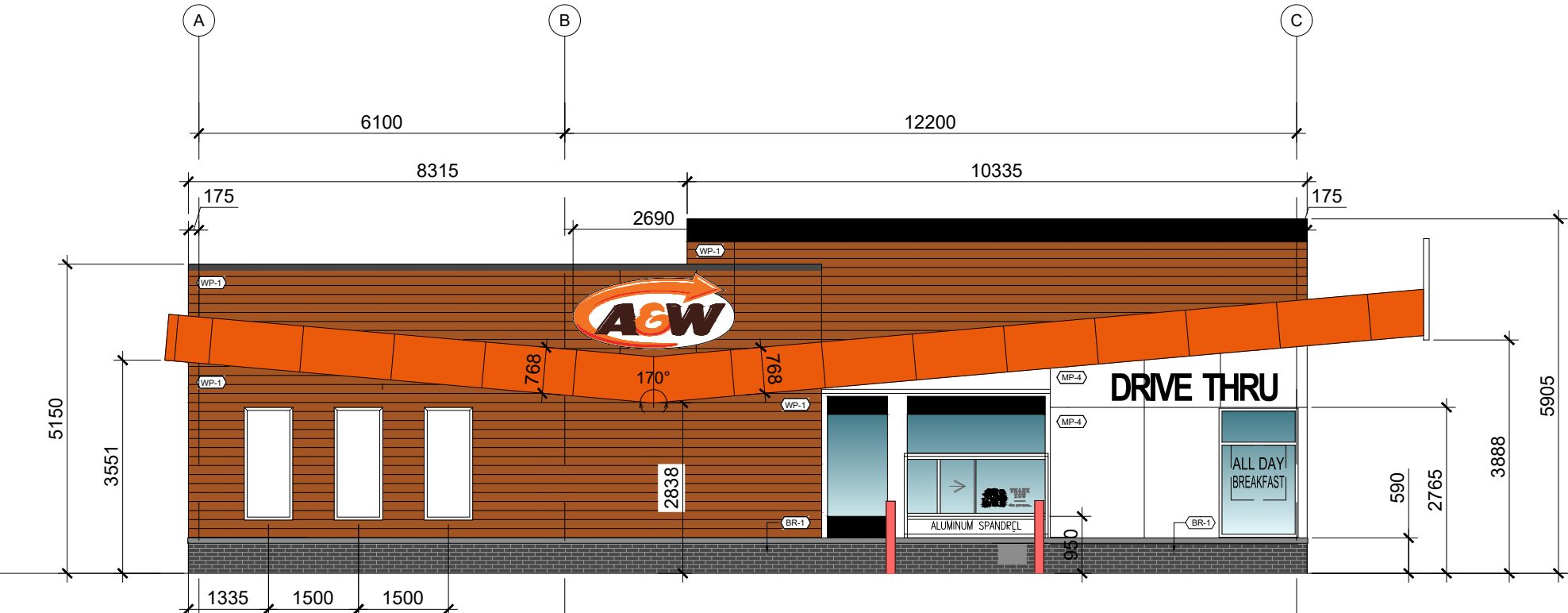
03 NORTH ELEVATION - ORIGINAL
A201 SCALE: 1:100



04 EAST ELEVATION
A201 SCALE: 1:100



01 SOUTH ELEVATION - OPTION 1
A201 SCALE: 1:100



02 WEST ELEVATION
A201 SCALE: 1:100