

To: City of Ottawa  
Utility Coordination  
100 Constellation Crescent, 6<sup>th</sup> Floor East  
Ottawa ON, K2G 6J8

Date: September 30, 2024

**Re: 788 March Road – Utility Circulation**

**Project Contacts**

The City of Ottawa Project Manager is Mike Giampa, and the Parsons Project Manager is Bader Alnabelseya, (613-371-8217).

**Project Description**

SINA is constructing the Development at 788 March Road, located at the corner of March Road and Klondike Road. The proposed development which consists of two 6-storey apartment buildings will comprise of 95 residential units for the first phase and 101 residential units for the second phase. The proposed development is located at the southeast corner of the Klondike Road/March Road intersection. The municipal address is 788 March Road.

Proposed road modifications includes:

- Urbanize the south side of Klondike Road by adding curbs
- New 3.0m bi-directional cycle track
- New bus shelter and bus stop
- New 2.0m concrete sidewalk
- New full-movement access on the south side of Klondike Road

**Construction Timeline**

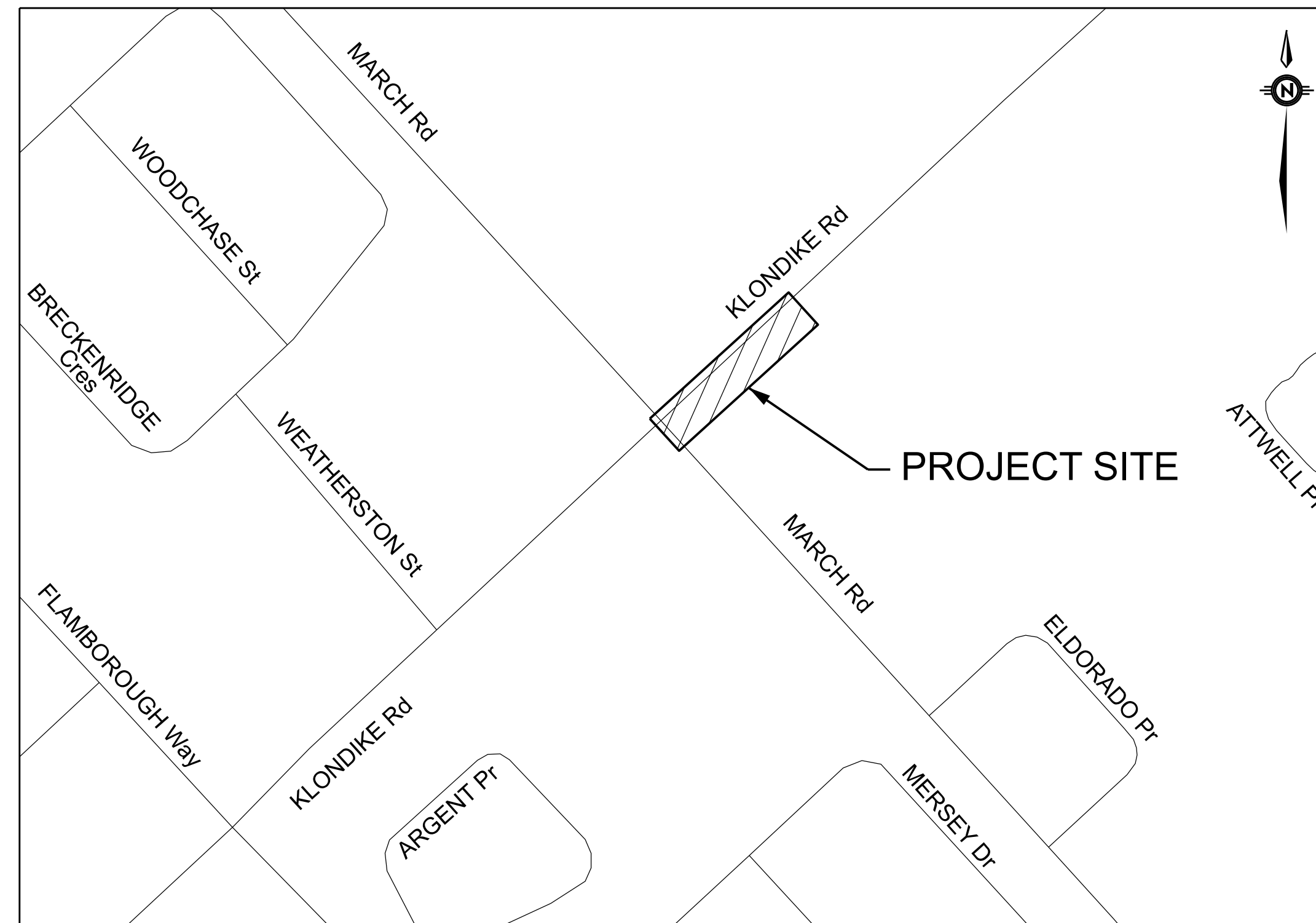
May 2025 to September 2025

The circulation package includes the preliminary design drawings and this cover letter. The key plan is on the design drawings cover page.

Sincerely,



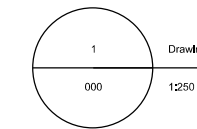
Bader Alnabelseya, P.Eng  
Project Manger



# 788 MARCH ROAD ROADWAY MODIFICATIONS CONTRACT NO. CTY

ISSUED FOR UTILITY CIRCULATION - SEPTEMBER 30th, 2024

SHEET NO.	CIVIL
000	COVER SHEET
001	INDEX & GENERAL NOTES
002	LEGEND
003	ALIGNMENT DETAILS
004	REMOVALS
005	NEW CONSTRUCTION
006	PAVEMENT ELEVATIONS & GRADING
007	TYPICAL SECTION
008	PAVEMENT MARKINGS & SIGNAGE
009	EXISTING PAVEMENT MARKINGS & SIGNAGE (FOR INFORMATION ONLY)



788 MARCH ROAD  
ROADWAY MODIFICATIONS



INDEX & GENERAL NOTES

Contract No. CTY 001  
Dwg. No. 001  
Sheet 01 of 09

Director, Infrastructure Services Project Manager



Asset No.

Asset Group ISD

Des. M.J.P. Chk'd. B.A.

Dwn. M.J.P. Chk'd. B.A.

Utility Circ. No. Index No.

Const. Inspector

Scale:

NOTE: The location of utilities is approximate only, the exact location should be determined by consulting the municipal authorities and utility companies concerned. The contractor shall prove the location of utilities and shall be responsible for adequate protection from damage.

REVISIONS	No.	Description	By	Date (dd/mm/yy)
	1	ISSUED FOR UTILITY CIRCULATION	B.A.	13/09/24
2				
3				
4				
5				

GENERAL NOTES:

1. THE LOCATION OF THE UTILITIES IS APPROXIMATE ONLY. THE EXACT LOCATION SHOULD BE DETERMINED BY CONSULTING THE MUNICIPAL AUTHORITIES AND UTILITY COMPANIES CONCERNED. THE CONTRACTOR SHALL PROVE THE LOCATION OF UTILITIES AND SHALL BE RESPONSIBLE FOR ADEQUATE PROTECTION FROM DAMAGE.
2. ALL DIMENSIONS ARE IN METRES UNLESS OTHERWISE NOTED
3. WITH THE EXCEPTION OF THE CITY OF OTTAWA CONSTRUCTION SPECIFICATIONS & STANDARD DETAIL DRAWINGS REFERRED TO IN THIS CONTRACT, ONTARIO PROVINCIAL STANDARD DRAWINGS (OPSD) & STANDARD SPECIFICATIONS (OPSS) SHALL APPLY TO THIS CONTRACT.
4. THE CONTRACTOR SHALL VERIFY AND LOCATE ALL EXISTING STORM AND SANITARY SERVICES IN THE FIELD AS DIRECTED BY THE CONTRACT ADMINISTRATOR.
5. ALL BASE MAPPING IS REFERENCED TO NORTH AMERICAN DATUM OF 1983 (NAD83).
6. THE CONTRACTOR IS RESPONSIBLE FOR PROVIDING PROTECTION FOR ALL EXISTING UNDERGROUND UTILITIES DURING CONSTRUCTION.
7. CONTRACTOR TO CONFIRM DIMENSIONS & ELEVATIONS PRIOR TO UNDERTAKING CONSTRUCTION.
8. CONTRACTOR TO CONFIRM DIMENSIONS OF ALL GRANITE ELEMENTS PRIOR TO ORDERING.

# SYMBOLS

	EXISTING	PROPOSED	REMOVALS
Roadway, Laneways & Entrances	ASPH. CONC.		
Perforated Pipe Sub - Drain		(SIZE) →	
Concrete Curb		DETAIL NUMBER	X X X
Concrete Curb - Full Height		DETAIL NUMBER	
Concrete Curb - Half Height		DETAIL NUMBER	
Concrete Precast Curb		DETAIL NUMBER	X X
Sidewalks	ASPH. CONC.	DETAIL NUMBER	CONC ASPH.
Interlock Pavers / Granite Sets	PVST		
Ditches and Creeks etc. over 0.6m wide			
Ditch			
Culvert			X
Culvert with Headwalls			X
SEWERS			
Combined Sewer	500mm COMB	500mm COMB	X 500mm COMB X
Storm Sewer	500mm ST.	500mm ST.	X 500mm ST. X
Sanitary Sewer	500mm SAN.	500mm SAN.	X 500mm SAN. X
Abandoned Storm Sewer	ABAND. 500mm ST.		500mm ST.
Abandoned Sanitary Sewer	ABAND. 500mm SAN.		500mm SAN.
			ADJUST REMOVE
Single Catch Basin or Ditch Inlet			
Double Catch Basin			
Storm Manhole			
Sanitary Manhole			
Catchbasin Manhole			
WATERMAIN			
Watermain	203mm WM.	203mm WM.	X
Valve Box	VB	VB	VB VB
Valve Chamber	VC	VC	VC VC
Stand Pipe			
Hydrant	FH	FH	FH
Reducer			
BELL			
Underground Bell Cable	UB	BELL	
Bell Pole	UP	B	
Bell Pole with Guy Wire	UP	B	
Bell Manhole	BMH		
Telephone Booth	T	T	
Bell Pedestal	B	B	
HYDRO			
Underground Hydro	UH	HYDRO	
Hydro Pole	UP	H	
Hydro Pole with Guy Wire	UP	H	
Hydro Manhole	HMH		
Hydro Pedestal	H	H	
Hydro Tower			

# SYMBOLS (CONT'D)

	EXISTING	PROPOSED	REMOVALS
GAS			
Gas Main	100mm GAS	100mm GAS	
Gas Valve			
Gas Meter			
Underground Rogers Cable	ROGERS	ROGERS	
TRAFFIC PLANT & STREET LIGHTING			
TRAFFIC LIGHT	TL		
Street Light	LS		
Traffic Manhole			
Traffic Handhole	THH		
*170" Traffic Controller Foundation			
Traffic Mast Arm Foundation			
Traffic Tubular Foundation			
Joint Use Pole Foundation			
Traffic Controller Foundation			
Detector Loop			
51 mm ( 2" ) Conduit, Conc. Encased			
76mm ( 3" ) Conduit, Conc. Encased			
102mm ( 4" ) Conduit, Conc. Encased			
127mm ( 5" ) Conduit, Conc. Encased			

# SUPPLEMENTARY

EXISTING COLUMN (CONCRETE)	○
EXISTING SMALL SIGN	●
EXISTING BOLLARD	●
EXISTING FLAG POLE	● FP
EXISTING PARKING METER	-o- PM
EXISTING IRON HANDRAIL	—o—
EX. FLAG POLE ON CONCRETE BASE	FP
EX. CONCRETE BASE FOR STEEL COLUMN	CBSC
EX. FOUNDATION	FDN
EX. CHAIN LINK FENCE	CLF

788 MARCH ROAD  
ROADWAY MODIFICATIONS

Contract No. CTY		Draw. No. 002	
Sheet 2 of 09			
Asset No.		Asset Group ISD	
Director, Infrastructure Services	Project Manager		
Des.	M.J.P.	Chk'd.	B.A.
Dwn.	M.J.P.	Chk'd.	B.A.
Utility Circ. No.		Index No.	
Const. Inspector			
Scale:			

NOTE: The location of utilities is approximate only, the exact location should be determined by consulting the municipal authorities and utility companies concerned. The contractor shall prove the location of utilities and shall be responsible for adequate protection from damage.

No.	Description	By	Date (dd/mm/yy)
1	ISSUED FOR UTILITY CIRCULATION	B.A.	13/09/24
2			
3			
4			
5			

# REFERENCE POINTS

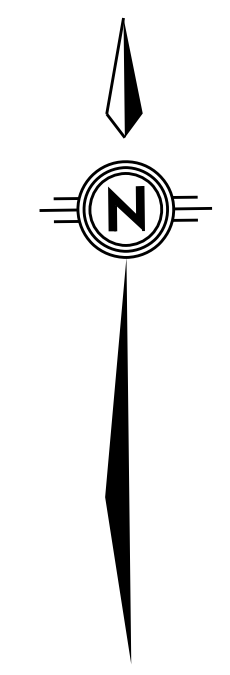
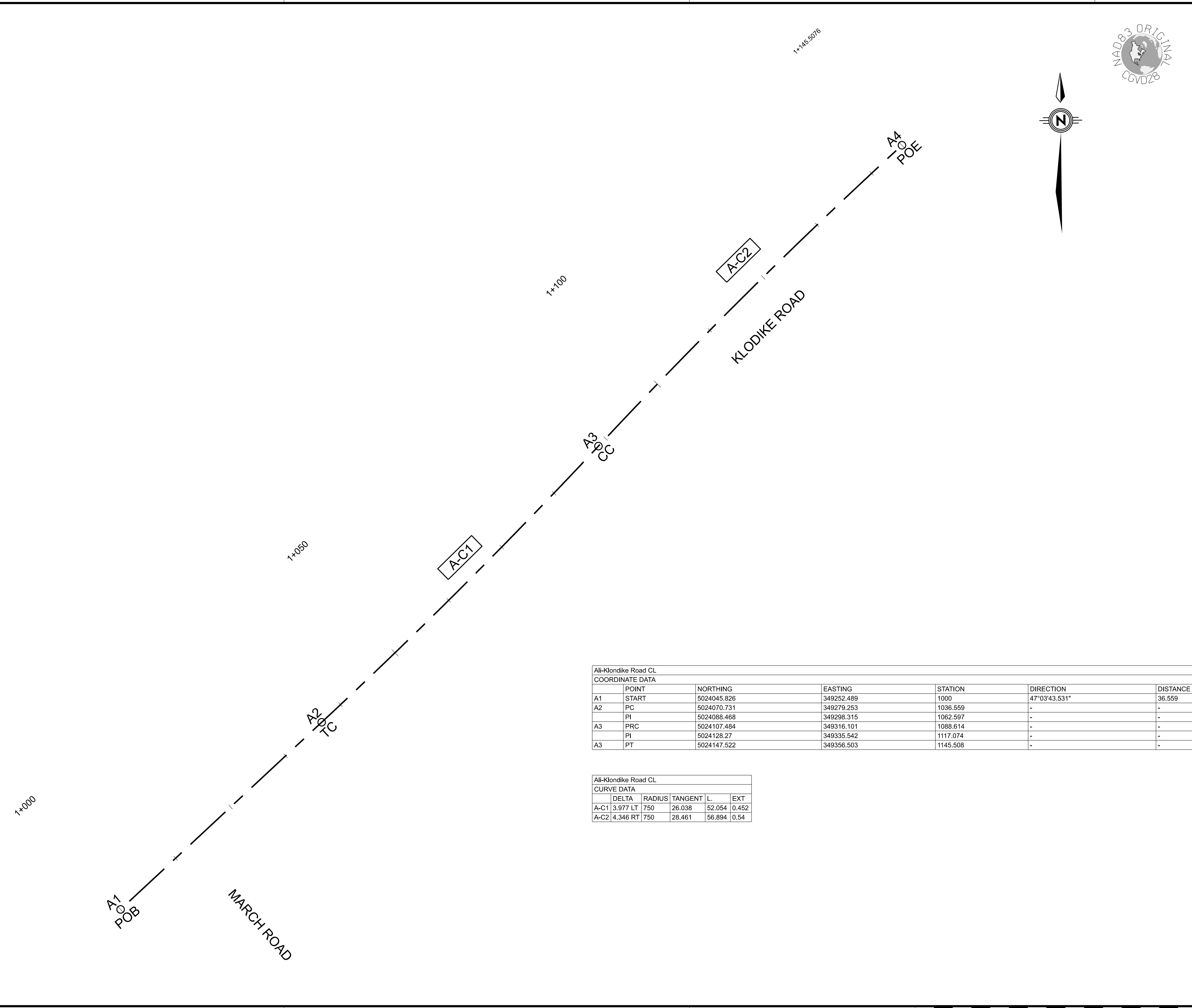
BM ELEV.	BENCH MARK
CM	CONCRETE MONUMENT
RB	ROCK BAR
IP	IRON TUBE OR PIPE
IB	IRON BAR
WS	WOOD STAKE
ISCM 2-	2ND ORDER INTEGRATED SURVEY CONTROL MONUMENT
ISCM 3-	3RD ORDER INTEGRATED SURVEY CONTROL MONUMENT
CX	CUT CROSS
V	CUT VEE
RIB	ROUND IRON BAR
REIN	REINFORCING BAR
SIB	STANDARD IRON BAR
SSIB	SHORT STANDARD IRON BAR
BL	BOREHOLE LOCATION

# MISCELLANEOUS

	AREA TO BE CLEARED
	AREA TO BE GRUBBED
	AREA TO BE CLEARED AND GRUBBED
	CAST IN PLACE CONCRETE SIDEWALK (TYPE AS SPECIFIED)
	100mm THICK TOPSOIL AND HYDROSEED
	100mm THICK TOPSOIL AND SOD
	PARTIAL DEPTH ASPHALT REMOVAL
	FULL DEPTH ASPHALT REMOVAL
	CUT ROADWAY GRADING
	FILL ROADWAY GRADING
DC	PROPOSED DEPRESSED CURBS
	REMOVE AND SALVAGE
	REMOVALS, RELOCATIONS AND/OR ADJUSTMENTS OF GAS, BELL AND HYDRO PLANT, STREET LIGHTING, FIRE HYDRANTS AND ROAD SIGNS TO BE CARRIED OUT BY OTHERS.
	ADJUST AND REBUILD

# RAILWAYS

	1:500, 1:1000 SCALE, SINGLE (MULTIPLE) TRACK
GFL-B	GATE, FLASHING LIGHT AND BELL
W	WIG - WAG
WB	WIG - WAG AND BELL
RCS	RAILWAY CROSSING SIGN
FL	FLASHING LIGHT



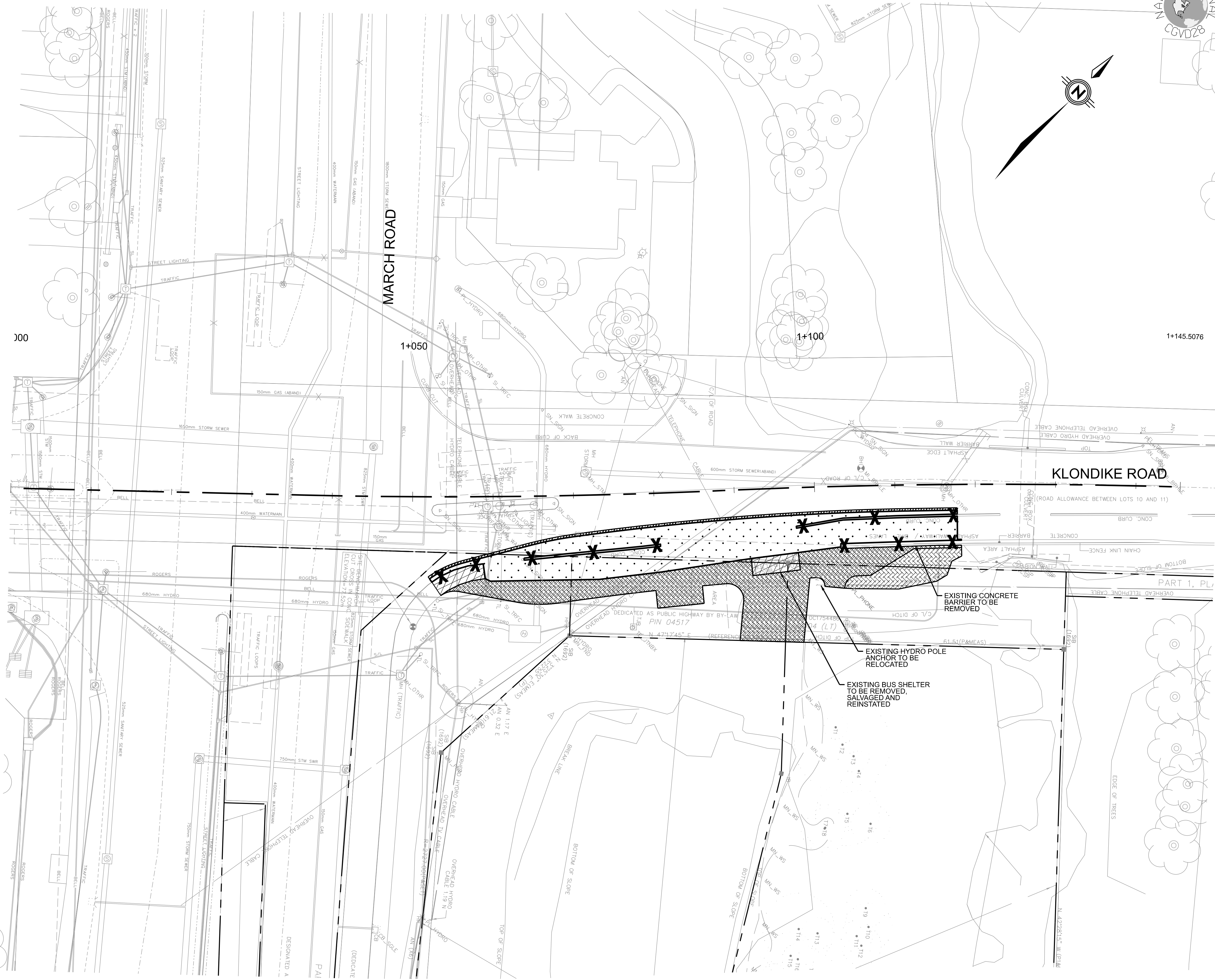
788 MARCH ROAD ROADWAY MODIFICATIONS			
ALIGNMENT DETAILS		Contract No. CTY	Dwg. No. 003
		Sheet 3 of 09	
Director, Infrastructure Services		Project Manager	
		Asset Group ISD	
Des.	M.J.P.	Chk'd.	B.A.
Dwn.	M.J.P.	Chk'd.	B.A.
Utility Circ. No.		Index No.	
Const. Inspector			
Scale:			

NOTE: The location of utilities is approximate only, the exact location should be determined by consulting the municipal authorities and utility companies concerned. The contractor shall prove the location of utilities and shall be responsible for adequate protection from damage.

No.	Description	By	Date (dd/mm/yy)
1	ISSUED FOR UTILITY CIRCULATION	B.A.	13/09/24
2			
3			
4			
5			

All-Klondike Road CL COORDINATE DATA						
	POINT	NORTHING	EASTING	STATION	DIRECTION	DISTANCE
A1	START	5024045.826	349252.489	1000	47°03'43.531"	36.559
A2	PC	5024070.731	349279.253	1036.559	-	-
	PI	5024088.468	349298.315	1062.597	-	-
A3	PRC	5024107.484	349316.101	1088.614	-	-
	PI	5024128.27	349335.542	1117.074	-	-
A3	PT	5024147.522	349356.503	1145.508	-	-

All-Klondike Road CL CURVE DATA				
	DELTA	RADIUS	TANGENT L.	EXT
A-C1	3.977 LT	750	26.038	52.054 0.452
A-C2	4.346 RT	750	28.461	56.894 0.54



788 MARCH ROAD  
ROADWAY MODIFICATIONS



REMOVALS

Contract No. CTY  
Sheet 04 of 09

Asset No.

Director, Infrastructure Services Project Manager



Asset Group ISD

Des. M.J.P. Chk'd. B.A.

Dwn. M.J.P. Chk'd. B.A.

Utility Circ. No. Index No.

Const. Inspector

Scale: HORIZONTAL  
0m 2.5 5 10

NOTE: The location of utilities is approximate only, the exact location should be determined by consulting the municipal authorities and utility companies concerned. The contractor shall prove the location of utilities and shall be responsible for adequate protection from damage.

No.	Description	By	Date (dd/mm/yy)
1	ISSUED FOR UTILITY CIRCULATION	B.A.	13/09/24
2			
3			
4			
5			

788 MARCH ROAD  
ROADWAY MODIFICATIONS



Contract No. CTY  
Dwg. No. 005

GEOMETRY AND  
GENERAL LAYOUT

Sheet 05 of 09

Director, Infrastructure Services Project Manager



Asset No.

Asset Group ISD

Des. M.J.P. Chkd. B.A.

Dwn. M.J.P. Chkd. B.A.

Utility Circ. No. Index No.

Const. Inspector

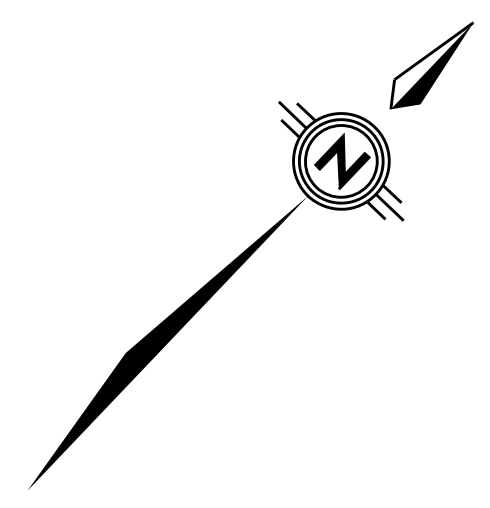
Scale: HORIZONTAL  
0m 2.5 5 10

NOTE: The location of utilities is approximate only, the exact location should be determined by consulting the municipal authorities and utility companies concerned. The contractor shall prove the location of utilities and shall be responsible for adequate protection from damage.

No.	Description	By	Date (dd/mm/yy)
1	ISSUED FOR UTILITY CIRCULATION	B.A.	13/09/24
2			
3			
4			
5			



COORDINATE TABLE			
POINT NO.	DESCRIPTION	NORTHING	EASTING
1	CT	5024081.209	349302.605
2	CT	5024082.547	349304.598
3	CT	5024082.974	349305.233
4	CT	5024085.649	349308.077
5	CT	5024088.225	349310.065
6	CT	5024088.853	349309.287
7	CT	5024102.292	349320.311
8	CT	5024104.554	349322.280
9	CT	5024111.890	349328.911
10	CT	5024114.079	349330.963
11	CT	5024114.335	349331.206
12	CT	5024117.011	349333.121
13	CT	5024120.346	349334.873
14	CT	5024123.752	349337.325
15	CT	5024113.755	349334.799
16	SWLK	5024075.565	349301.377
17	SWLK	5024092.768	349318.825
18	SWLK	5024091.356	349320.512
19	SWLK	5024095.805	349324.233
20	SWLK	5024097.216	349322.546
21	SWLK	5024099.487	349324.495
22	SWLK	5024099.438	349327.560
23	SWLK	5024107.850	349331.982
24	SWLK	5024109.517	349335.326
25	SWLK	5024111.496	349335.405
26	SWLK	5024112.751	349336.608
27	SWLK	5024118.535	349338.069
28	EOP	5024102.566	349327.195
29	EOP	5024101.965	349327.744
30	EOP	5024096.820	349331.919
31	EOP	5024107.105	349331.295
32	EOP	5024100.878	349336.341



**788 MARCH ROAD  
ROADWAY MODIFICATIONS**

**PAVEMENT ELEVATIONS**

Contract No. <b>CTY</b>		Dwg. No. <b>006</b>	
Sheet 06 of 09			
Asset No.			
Director, Infrastructure Services		Project Manager	
<b>PARSONS</b>			
Asset Group <b>ISD</b>			
Des.	M.J.P.	Chkd.	B.A.
Dwn.	M.J.P.	Chkd.	B.A.
Utility Circ. No.		Index No.	
Const. Inspector			
Scale: <b>HORIZONTAL</b>			
0m 2.5 5 10			

**NOTE:** The location of utilities is approximate only, the exact location should be determined by consulting the municipal authorities and utility companies concerned. The contractor shall prove the location of utilities and shall be responsible for adequate protection from damage.

No.	Description	By	Date (dd/mm/yy)
1	ISSUED FOR UTILITY CIRCULATION	B.A.	13/09/24
2			
3			
4			
5			





788 MARCH ROAD  
ROADWAY MODIFICATIONS



Contract No. CTY 007  
Sheet 07 of 09

TYPICAL SECTION

Director, Infrastructure Services Project Manager



Asset No.

Asset Group ISD

Des. M.J.P. Chk'd. B.A.

Dwn. M.J.P. Chk'd. B.A.

Utility Circ. No. Index No.

Const. Inspector

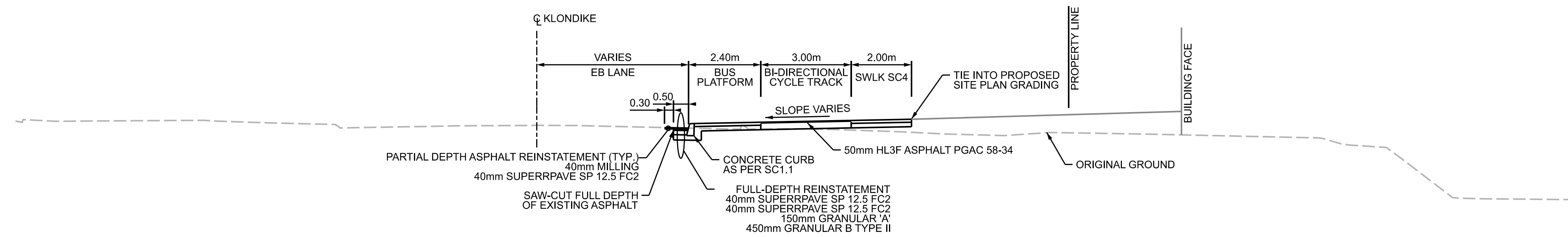
Scale: N.T.S.

NOTE: The location of utilities is approximate only, the exact location should be determined by consulting the municipal authorities and utility companies concerned. The contractor shall prove the location of utilities and shall be responsible for adequate protection from damage.

No.	Description	By	Date (dd/mm/yy)
1	ISSUED FOR UTILITY CIRCULATION	B.A.	13/09/24
2			
3			
4			
5			

NOTES:

- CONTRACTOR TO MATCH EXISTING PAVEMENT STRUCTURE



KLONDIKE ROAD - TYPICAL SECTION  
STA. 1+075

788 MARCH ROAD  
ROADWAY MODIFICATIONS



REINSTATEMENT

Contract No. CTY  
Sheet 08 of 09

Asset No.

Director, Infrastructure Services Project Manager



Asset Group ISD

Des. M.J.P. Chk'd. B.A.

Dwn. M.J.P. Chk'd. B.A.

Utility Circ. No. Index No.

Const. Inspector

Scale: HORIZONTAL

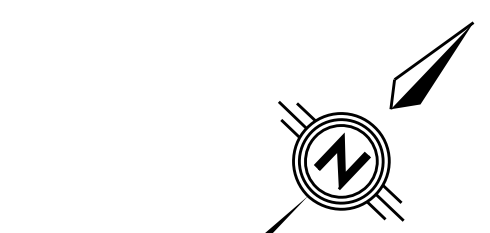
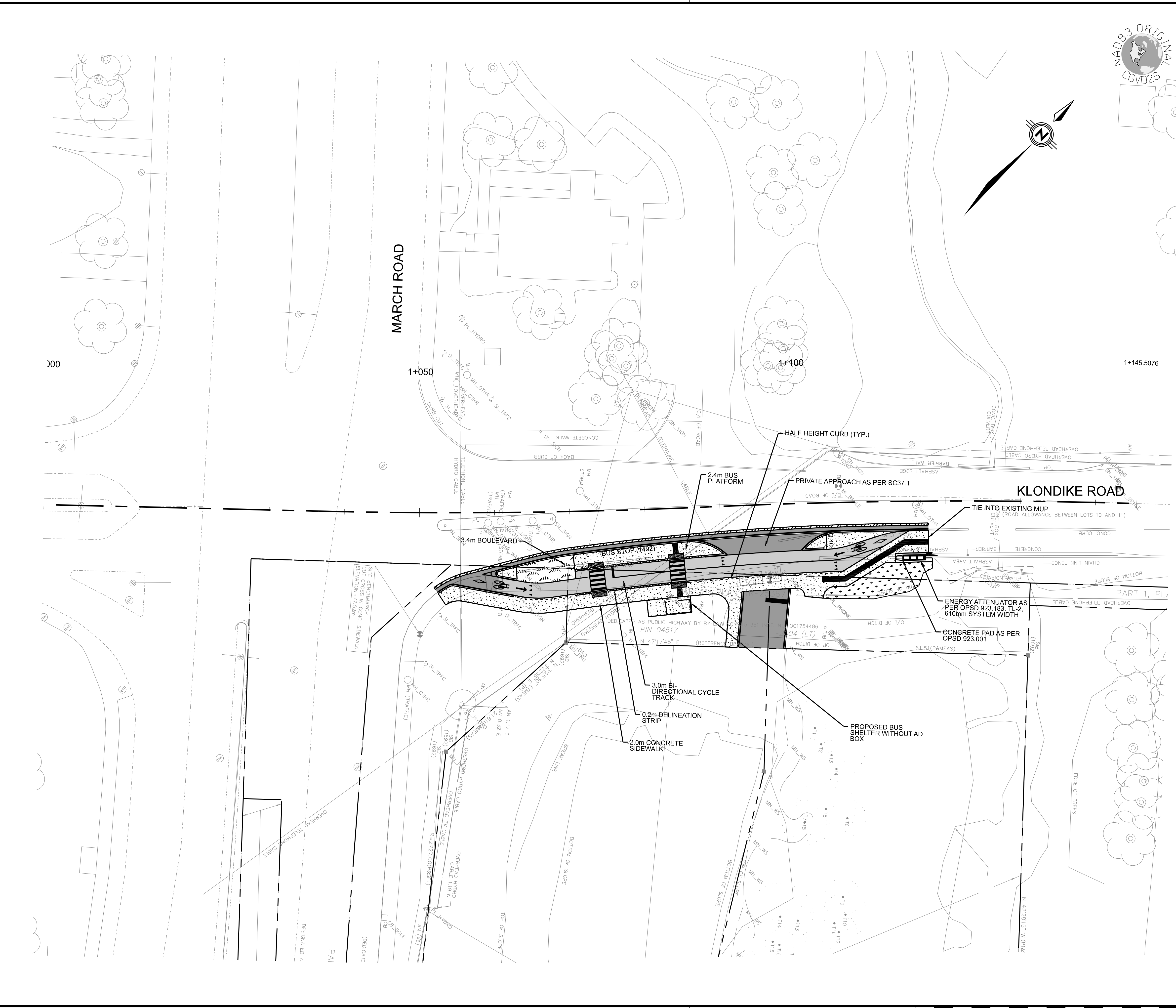


NOTE: The location of utilities is approximate only, the exact location should be determined by consulting the municipal authorities and utility companies concerned. The contractor shall prove the location of utilities and shall be responsible for adequate protection from damage.

No.	Description	By	Date (dd/mm/yy)
1	ISSUED FOR UTILITY CIRCULATION	B.A.	13/09/24
2			
3			
4			
5			

LEGEND:

	SOD
	CONCRETE
	PAVED CYCLE TRACK
	PARTIAL DEPTH ASPHALT
	FULL DEPTH ASPHALT ROADWAY
	SEED AND MULCH





**788 MARCH ROAD  
ROADWAY MODIFICATIONS**

**PAVEMENT MARKINGS  
AND SIGNAGE  
(FOR INFORMATION ONLY)**

Contract No. <b>CTY</b>		Dwg. No. <b>009</b>	
Sheet <b>09</b> of <b>09</b>		Asset No.	
Director, Infrastructure Services		Project Manager	
<b>PARSONS</b>			
Des. M.J.P.		Chk'd. B.A.	
Dwn. M.J.P.		Chk'd. B.A.	
Utility Circ. No.		Index No.	
Const. Inspector			
Scale: <b>HORIZONTAL</b>			
0m 2.5 5 10			

**NOTE:** The location of utilities is approximate only, the exact location should be determined by consulting the municipal authorities and utility companies concerned. The contractor shall prove the location of utilities and shall be responsible for adequate protection from damage.

No.	Description	By	Date (dd/mm/yy)
2			
3			
4			
5			