

RESPONSIBILITIES:

DO NOT SCALE DRAWINGS
ALL DESIGN AND CONSTRUCTION TO BE IN
ACCORDANCE WITH THE ONTARIO BUILDING
CODE 2012

ALL CONTRACTORS MUST WORK IN
ACCORDANCE WITH ALL LAWS, REGULATIONS
AND BYLAWS HAVING JURISDICTION

IT IS THE RESPONSIBILITY OF THE APPROPRIATE
CONTRACTOR TO CHECK AND VERIFY ALL
DIMENSIONS ON SITE AND REPORT ALL ERRORS
AND OMISSIONS TO THE ARCHITECT/DESIGNER

THIS DRAWING MAY NOT BE USED FOR
CONSTRUCTION UNTIL SIGNED
BY THE ARCHITECT

COPYRIGHT RESERVED

GENERAL NOTES:



116-118 CARRUTHERS AVE.
FOUR STOREY LOW RISE
APARTMENT DWELLING

OWNER/DEVELOPER:
MA PRECIOUS HOLDING INC.

ARCHITECT:
REDLINE ARCHITECTURE INC.

APPLICANT:
OR PLANNING + DESIGN,
DANIEL EDWARDS
24 KIRKSTALL AVENUE, OTTAWA,
ON K3B 3M5

CIVIL ENGINEER:
EOP SERVICES INC.
100-2602 QUEENSWAY DRIVE
OTTAWA, ONTARIO K2B 8H6

LANDSCAPING:
JAMES B. LENVOX & ASSOCIATES INC.
3332 CARLING AVE OTTAWA ON K2H 5A8
CANADA

SURVEYOR:
ADVLTD,
14 CONCOURSE GATE, SUITE 500
OTTAWA, ON K2E 7G6

CONSULTANTS:

STRUCTURAL - TBD
MECHANICAL - TBD
ELECTRICAL - TBD

MDY		
9		
8		
7		
6		
5		
4		
3		
2	ISSUED FOR SPA REV.	01/02/25
1	ISSUED FOR BPA	11/12/24
NO.	REVISION/ISSUE	DATE

PROJECT:

116-118 CARRUTHERS AVE.
OTTAWA, ON K1Y 1N5

FLOOR PLANS

DRAWN BY:

DATE: MAY 3, 2024

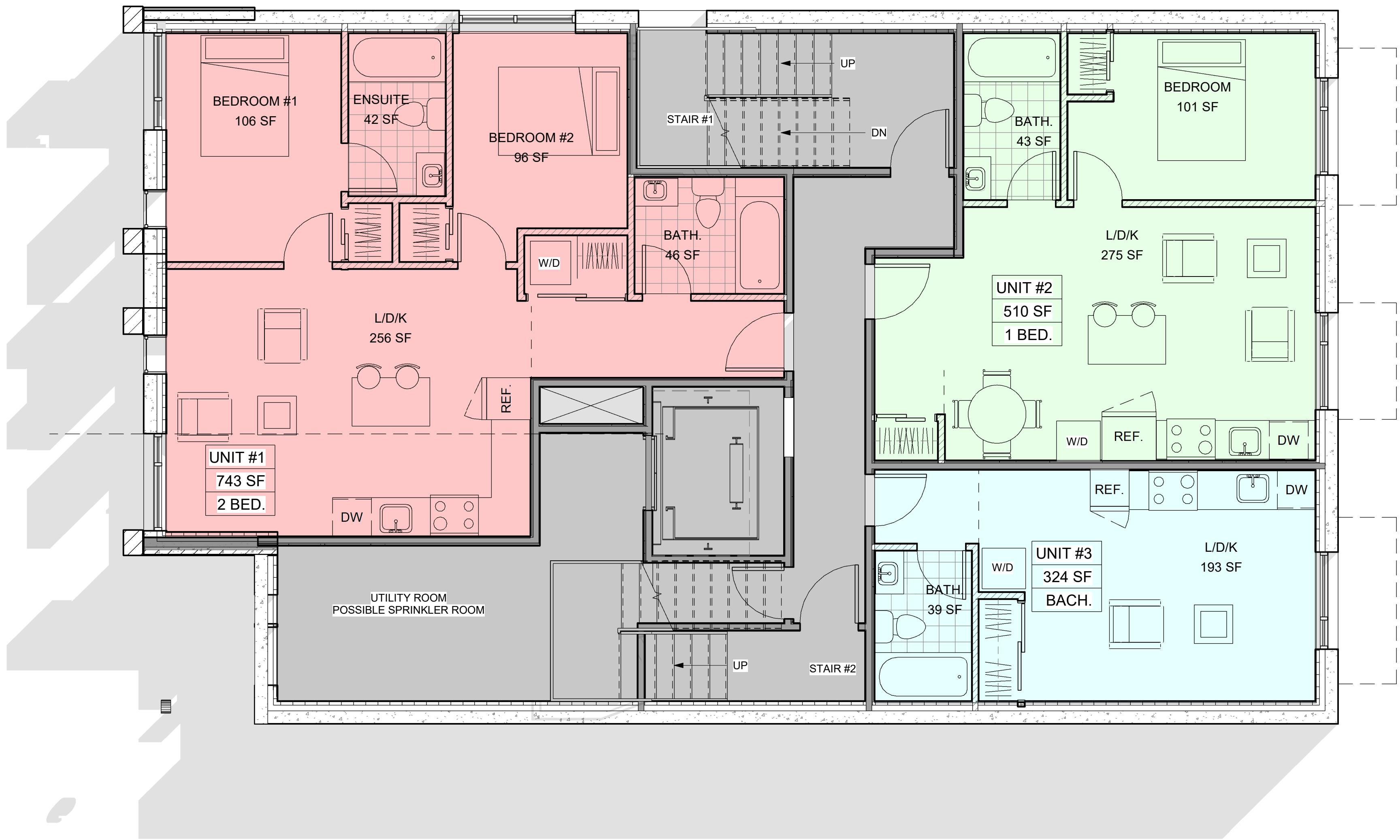
SCALE: AS NOTED

SHEET:

DATE: MAY 3, 2024

SCALE: AS NOTED

A1



- BACHELOR
- 1 BEDROOM UNIT
- 2 BEDROOM UNIT

1 BASEMENT
1/4" = 1'-0"

RESPONSIBILITIES:

DO NOT SCALE DRAWINGS
ALL DESIGN AND CONSTRUCTION TO BE IN
ACCORDANCE WITH THE ONTARIO BUILDING
CODE 2012

ALL CONTRACTORS MUST WORK IN
ACCORDANCE WITH ALL LAWS, REGULATIONS
AND BYLAWS HAVING JURISDICTION

IT IS THE RESPONSIBILITY OF THE APPROPRIATE
CONTRACTOR TO CHECK AND VERIFY ALL
DIMENSIONS ON SITE AND REPORT ALL ERRORS
AND OMISSIONS TO THE ARCHITECT/DESIGNER

THIS DRAWING MAY NOT BE USED FOR
CONSTRUCTION UNTIL SIGNED
BY THE ARCHITECT

COPYRIGHT RESERVED

GENERAL NOTES:



116-118 CARRUTHERS AVE.
FOUR STOREY LOW RISE
APARTMENT DWELLING

OWNER/DEVELOPER:
MA PRECIOUS HOLDING INC.

ARCHITECT:
REDLINE ARCHITECTURE INC.

APPLICANT:
OR PLANNING + DESIGN,
DANYA EDWARDS
24 KIRKSTALL AVENUE, OTTAWA,
ON K3B 3M5

CIVIL ENGINEER:
EOP SERVICES INC.
100-2602 QUEENSWAY DRIVE
OTTAWA, ONTARIO K2B 8H6

LANDSCAPING:
JAMES B. LENNOX & ASSOCIATES INC.
3332 CARLING AVE. OTTAWA ON K2H 5A8
CANADA

SURVEYOR:
ADVLTD,
14 CONCOURSE GATE, SUITE 500
OTTAWA, ON K2E 7G6

CONSULTANTS:

STRUCTURAL - TBD
MECHANICAL - TBD
ELECTRICAL - TBD

		MDY
9		
8		
7		
6		
5		
4		
3		
2	ISSUED FOR SPA REV.	01/02/25
1	ISSUED FOR BPA	11/12/24
NO.	REVISION/ISSUE	DATE

PROJECT:

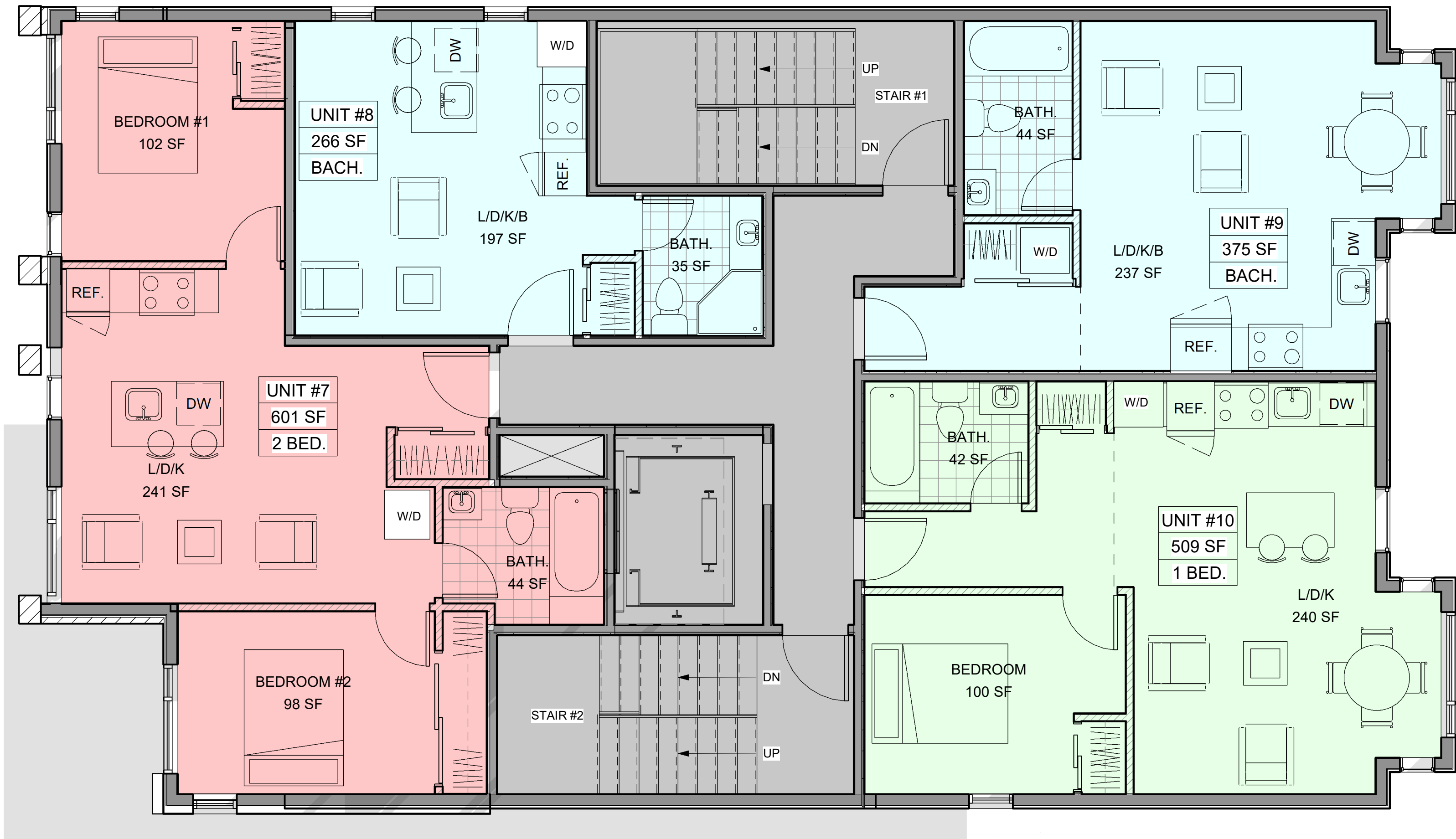
116-118 CARRUTHERS AVE.
116-118 CARRUTHERS AVE.
OTTAWA, ON K1Y 1N5

FLOOR PLANS

DRAWN BY:	SHEET:
DATE: MAY 3, 2024	A2
SCALE: AS NOTED	



1 GROUND FLOOR
1/4" = 1'-0"



- BACHELOR
- 1 BEDROOM UNIT
- 2 BEDROOM UNIT

1 SECOND FLOOR
1/4" = 1'-0"

RESPONSIBILITIES:
DO NOT SCALE DRAWINGS
ALL DESIGN AND CONSTRUCTION TO BE IN ACCORDANCE WITH THE ONTARIO BUILDING CODE 2012
ALL CONTRACTORS MUST WORK IN ACCORDANCE WITH ALL LAWS, REGULATIONS AND BYLAWS HAVING JURISDICTION
IT IS THE RESPONSIBILITY OF THE APPROPRIATE CONTRACTOR TO CHECK AND VERIFY ALL DIMENSIONS ON SITE AND REPORT ALL ERRORS AND OMISSIONS TO THE ARCHITECT/DESIGNER
THIS DRAWING MAY NOT BE USED FOR CONSTRUCTION UNTIL SIGNED BY THE ARCHITECT
COPYRIGHT RESERVED



116-118 CARRUTHERS AVE.
FOUR STOREY LOW RISE
APARTMENT DWELLING

OWNER/DEVELOPER:
MA PRECIOUS HOLDING INC.

ARCHITECT:
REDLINE ARCHITECTURE INC.

APPLICANT:
OR PLANNING + DESIGN,
DANIEL EDWARDS
24 KIRKSTALL AVENUE, OTTAWA,
ON K3B 3M5

CIVIL ENGINEER:
EIP SERVICES INC.
100-2602 QUEENSWAY DRIVE
OTTAWA, ONTARIO K2B 9H6

LANDSCAPING:
JAMES B. LENNOX & ASSOCIATES INC.
3332 CARLING AVE OTTAWA ON K2H 5A8
CANADA

SURVEYOR:
ADVLTD,
14 CONCOURSE GATE, SUITE 500
OTTAWA, ON K2E 7G6

CONSULTANTS:
STRUCTURAL - TBD
MECHANICAL - TBD
ELECTRICAL - TBD

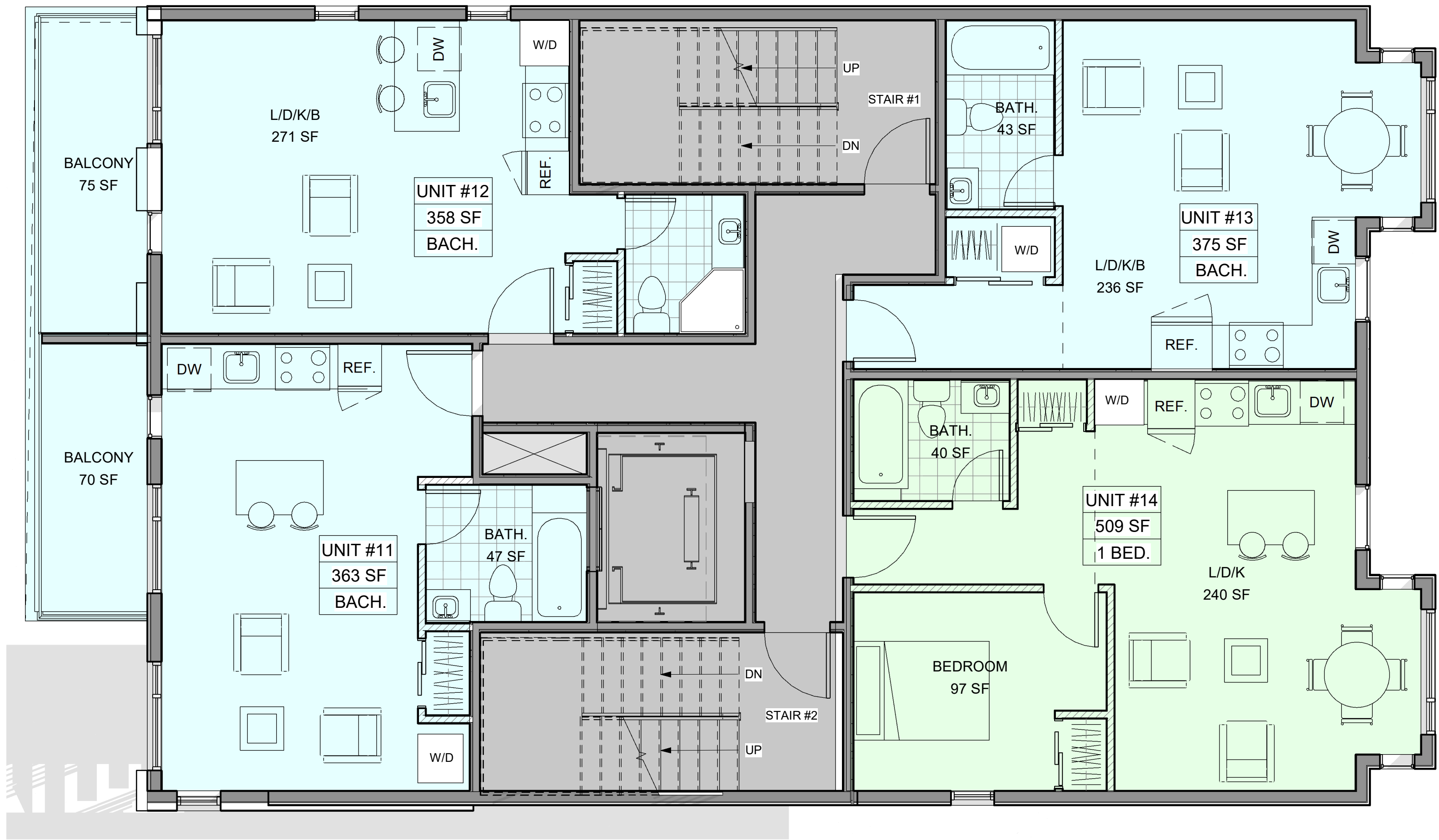
NO.	REVISION/ISSUE	DATE
9		
8		
7		
6		
5		
4		
3		
2	ISSUED FOR SPA REV.	01/02/25
1	ISSUED FOR BPA	11/12/24

PROJECT:
116-118 CARRUTHERS AVE.
116-118 CARRUTHERS AVE.
OTTAWA, ON K1Y 1N5

FLOOR PLANS

DRAWN BY:	SHEET:
DATE: MAY 3, 2024	A3
SCALE: AS NOTED	

19212



BACHELOR
1 BEDROOM UNIT

1 THIRD FLOOR
1/4" = 1'-0"

116-118 CARRUTHERS AVE.
FOUR STOREY LOW RISE
APARTMENT DWELLING

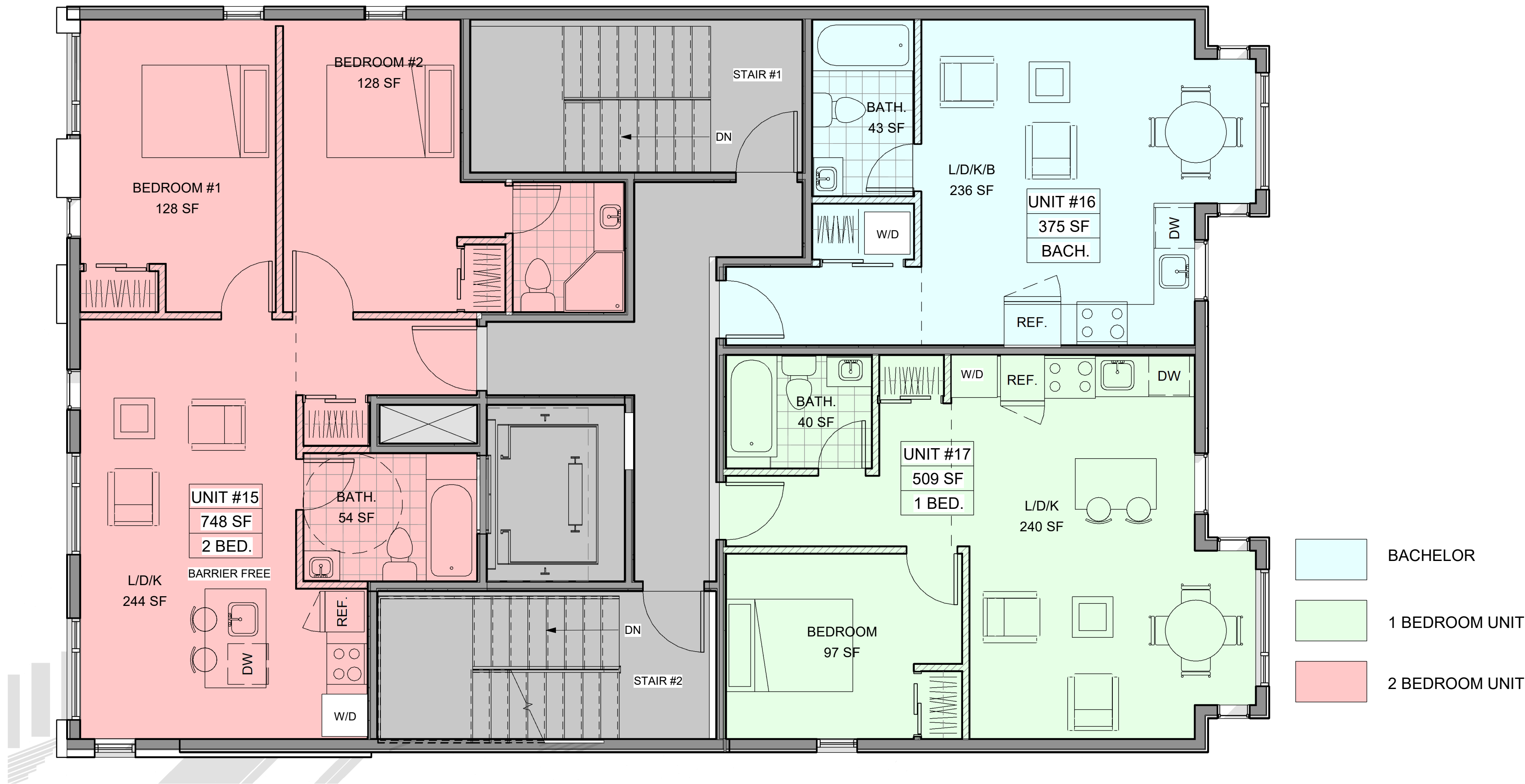
OWNER/DEVELOPER:
MA PRECIOUS HOLDING INC.
ARCHITECT:
REDLINE ARCHITECTURE INC.
APPLICANT:
OR PLANNING + DESIGN,
DANYA EDWARDS
24 KIRKSTALL AVENUE, OTTAWA,
ON K3B 3M5
CIVIL ENGINEER:
E&P SERVICES INC.
100-2602 QUEENSVIEW DRIVE
OTTAWA, ONTARIO K2B 8H6
LANDSCAPING:
JAMES B. LENNOX & ASSOCIATES INC.
3332 CARLING AVE OTTAWA ON K2H 5A8
CANADA
SURVEYOR:
ADVLTD,
14 CONCOURSE GATE, SUITE 500
OTTAWA, ON K2E 7G6
CONSULTANTS:
STRUCTURAL - TBD
MECHANICAL - TBD
ELECTRICAL - TBD

9		MD/Y
8		
7		
6		
5		
4		
3		
2	ISSUED FOR SPA REV.	01/02/25
1	ISSUED FOR BPA	11/12/24
NO.	REVISION/ISSUE	DATE

PROJECT:
116-118 CARRUTHERS AVE.
OTTAWA, ON K1Y 1N5

FLOOR PLANS

DRAWN BY: DATE: MAY 3, 2024
SCALE: AS NOTED
SHEET: A4



1 FOURTH FLOOR
1/4" = 1'-0"

116-118 CARRUTHERS AVE.
FOUR STOREY LOW RISE
APARTMENT DWELLING

OWNER/DEVELOPER:
MA PRECIOUS HOLDING INC.
ARCHITECT:
REDLINE ARCHITECTURE INC.
APPLICANT:
OR PLANNING + DESIGN,
DANYA EDWARDS
24 KIRKSTALL AVENUE, OTTAWA,
ON K3B 3M5
CIVIL ENGINEER:
EOP SERVICES INC.
100-2602 QUEENSVIEW DRIVE
OTTAWA, ONTARIO K2B 8H6
LANDSCAPING:
JAMES B. LENNOX & ASSOCIATES INC.
3332 CARLING AVE OTTAWA ON K2H 5A8
CANADA
SURVEYOR:
ADVLTD,
14 CONCOURSE GATE, SUITE 500
OTTAWA, ON K2E 7G6
CONSULTANTS:
STRUCTURAL - TBD
MECHANICAL - TBD
ELECTRICAL - TBD

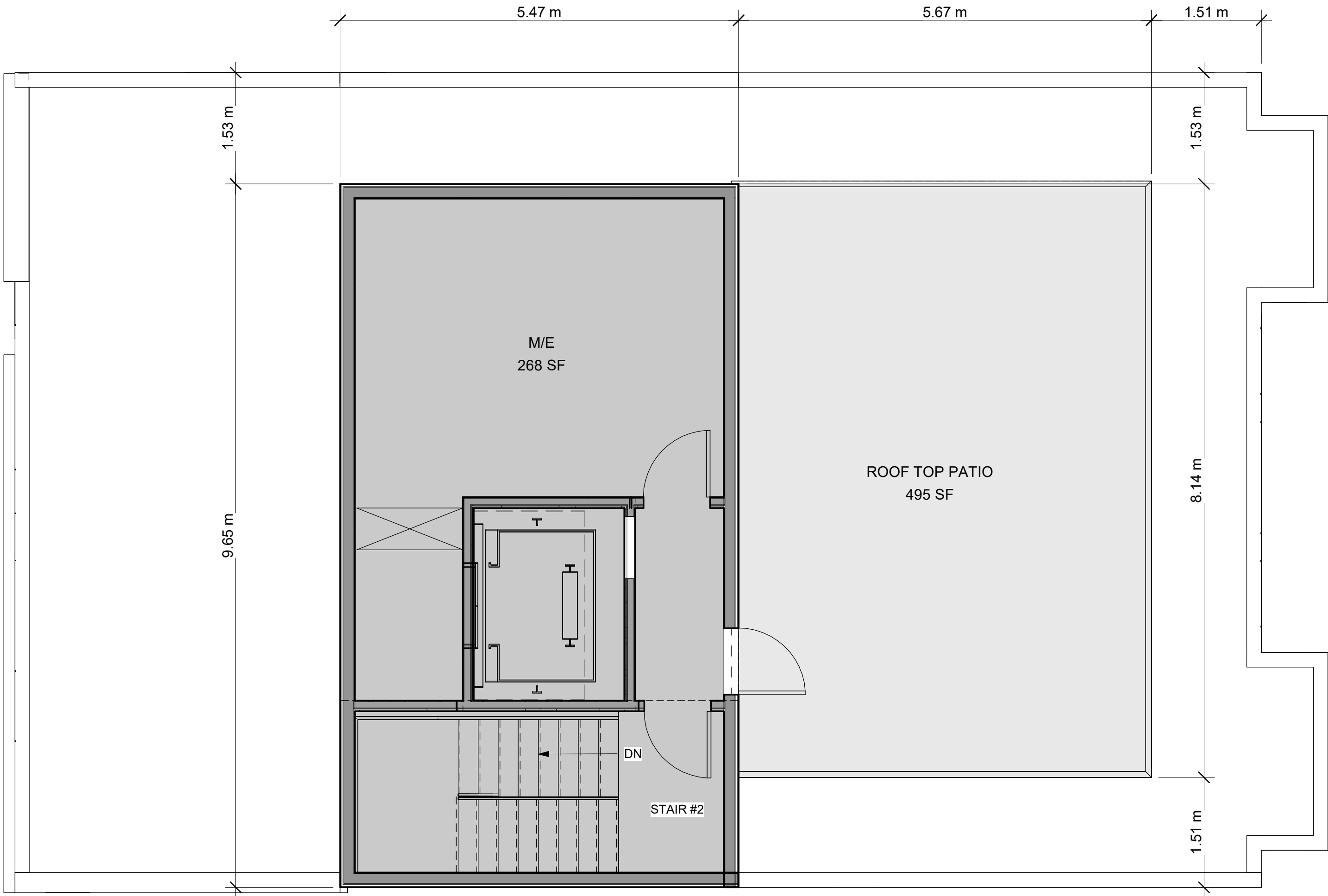
MDY		
9		
8		
7		
6		
5		
4		
3		
2	ISSUED FOR SPA REV.	01/02/25
1	ISSUED FOR BPA	11/12/24
NO.	REVISION/ISSUE	DATE

PROJECT:
116-118 CARRUTHERS AVE.
116-118 CARRUTHERS AVE.
OTTAWA, ON K1Y 1N5

FLOOR PLANS

DRAWN BY: SHEET:
DATE: MAY 3, 2024
SCALE: AS NOTED

A5



1 ROOF
1/4" = 1'-0"

116-118 CARRUTHERS AVE.
FOUR STOREY LOW RISE
APARTMENT DWELLING

OWNER/DEVELOPER:
MA PRECIOUS HOLDING INC.
ARCHITECT:
REDLINE ARCHITECTURE INC.
APPLICANT:
OR PLANNING + DESIGN,
DANYA EDWARDS
24 KIRKSTALL AVENUE, OTTAWA,
ON K3B 3M5
CIVIL ENGINEER:
EOP SERVICES INC.
100-2602 QUEENSVIEW DRIVE
OTTAWA, ONTARIO K2B 8H6
LANDSCAPING:
JAMES B. LENNOX & ASSOCIATES INC.
3332 CARLING AVE OTTAWA ON K2H 5A8
CANADA
SURVEYOR:
ADVLTD,
14 CONCOURSE GATE, SUITE 500
OTTAWA, ON K2E 7G6
CONSULTANTS:
STRUCTURAL - TBD
MECHANICAL - TBD
ELECTRICAL - TBD

NO.			MD/Y
9			
8			
7			
6			
5			
4			
3			
2	ISSUED FOR SPA REV.	01/02/25	
1	ISSUED FOR BPA	11/12/24	
NO.	REVISION/ISSUE	DATE	

PROJECT:
116-118 CARRUTHERS AVE.
116-118 CARRUTHERS AVE.
OTTAWA, ON K1Y 1N5

FLOOR PLANS		
DRAWN BY:		SHEET:
DATE: MAY 3, 2024		
SCALE: AS NOTED		